

LATHAN
ARCHITECTS
LATHAN ■ BRYANT ■ CALMA

300 CHASE PARK SOUTH • SUITE 200 • HOOVER, ALABAMA 35244
205-988-9112

ADDENDUM NO. 3
ADDITION AND RENOVATION FOR FLOMATON ELEMENTARY SCHOOL
PACKAGE A: MEDIA CENTER AND CLASSROOM ADDITION
DCM NO. 2021011 PSCA NO. 9167
Architect Job No. 21-04A
April 5, 2022

BIDS DUE:

Tuesday April 5, 2022 until
10:00 a.m., local time
Escambia County Board of Education
301 Belleville Avenue,
Brewton, AL 36426

The Plans and Specifications are hereby amended. The following supersedes all contrary and/or conflicting information and is made part of the contract documents.

BID DATE AND TIME HAS BEEN CHANGED TO:

Tuesday April 12, 2022 until
10:00 a.m., local time
Escambia County Board of Education
301 Belleville Avenue,
Brewton, AL 36426

SPECIFICATIONS

1. **Section 01020 – Allowances**

Add:

Allowance No. 11: Include a contingency allowance of \$15,000.00 under base bid for a Sensory room fit-out as directed by the Architect.

Allowance No. 12: Include a contingency allowance of \$2,500.00 under Base Bid for Owner's use in testing existing coverage of the Emergency Responder Radio Coverage System (ERRCS) as directed by the Architect.

Allowance No. 13: Include a contingency allowance of \$90,000.00 under Base Bid for Owner's use in providing an Emergency Responder Radio Coverage System (ERRCS) as directed by the Architect.

DRAWINGS

1. A3.1.1 – Elevations – Revised Elevation D. removed windows to match floor plan.
2. A3.1.2 – Alternate Elevations – Revised Elevation G. removed windows to match floor plan.

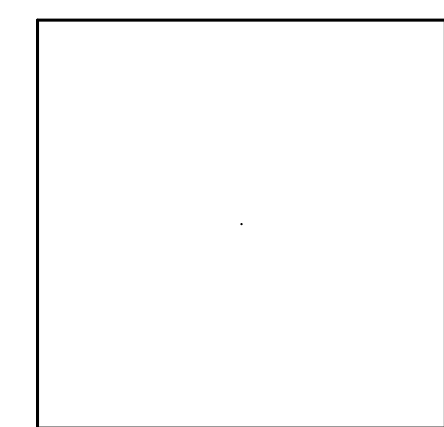
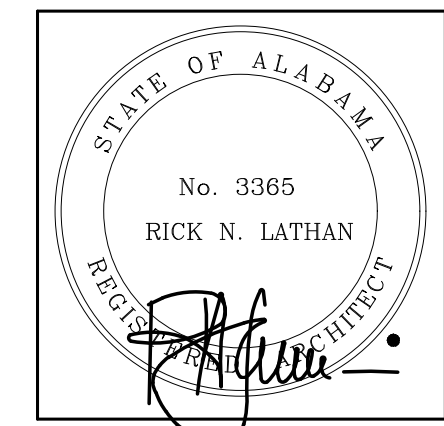
CLARIFICATIONS

1. Match Existing Intercom System Bogen Model MCP 35 A and Model SBA 225.
2. The 5/8" Dens Deck Cover Board and Polyiso insulation shall be fully adhered in manufacturer's approved sealant for a TPO roofing system.
3. The intention of the Fire Alarm is to ensure that the buildings go into alarm at the same time. Provide monitor modules and surge protection devices at new and existing panel.
4. Communication Rack for IDF111 shall be equal to Ortronics #OR-60400224 WITH 5/8", 5/8", 1/2" alternating hole pattern front and back with black finish. Provide equipment mounting hardware as required.



LATHAN
ARCHITECTS
LATHAN • BRYANT • CALMA

ADDITION AND RENOVATION FOR
FLOMATON ELEMENTARY SCHOOL
PACKAGE A: MEDIA CENTER AND CLASSROOM ADDITION
1634 POPULAR STREET, FLOMATON, AL 36441
ESCAMBIA COUNTY BOARD OF EDUCATION

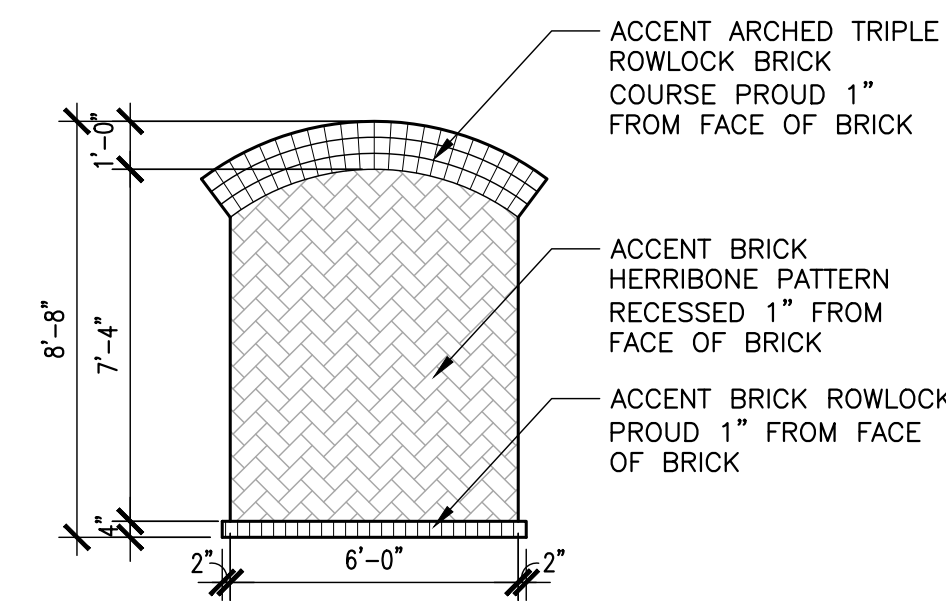


SHEET TITLE:
BASE BID ELEVATIONS

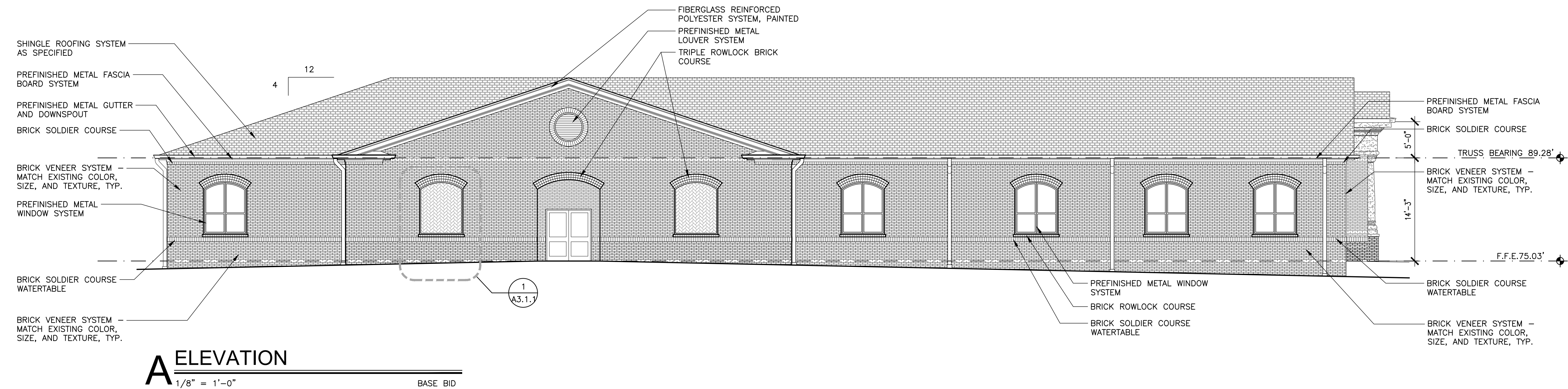
PROJ. MGR.: R. LATHAN
DRAWN: S. WILSON
DATE: FEBRUARY 18, 2022
REVISIONS
1 ADDENDUM NO.3

JOB NO. 21-04A
SHEET NO:
A3.1.1
11 OF 29
1/128" = 1'-0"

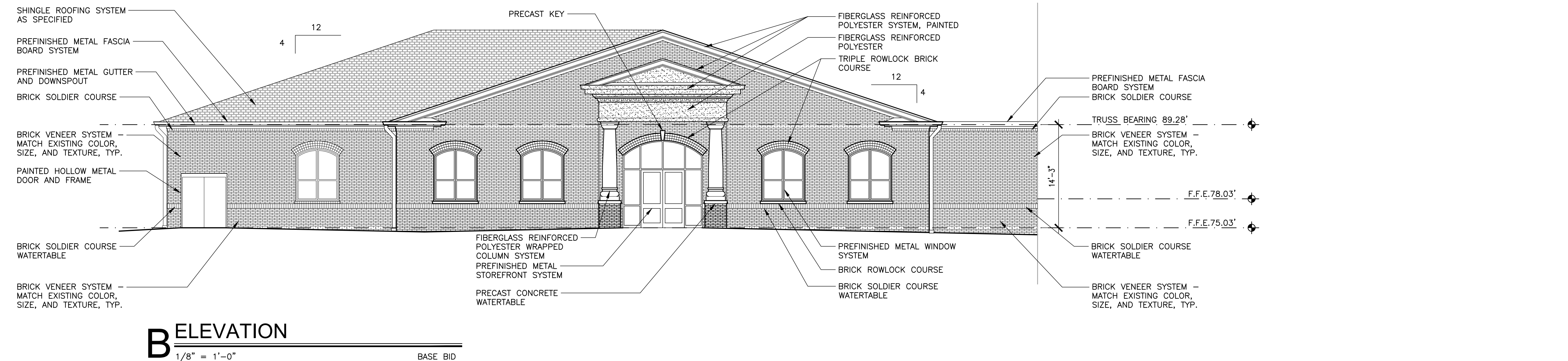
GENERAL ELEVATION NOTES	
COORDINATE DOWNSPOUT LOCATIONS BETWEEN ELEVATIONS AND ROOF PLANS.	
PROVIDE AN ACCENT BRICK AND ACCENT MORTAR COLOR FOR THE SOLDIER COURSE WATERTABLE.	
PROVIDE AN ACCENT BRICK AND ACCENT MORTAR COLOR FOR THE SOLDIER COURSE AT THE FRIEZE BOARD.	
PROVIDE AN ACCENT BRICK AND ACCENT MORTAR COLOR FOR THE ARCHED TRIPLE ROWLOCK HEAD.	
PROVIDE AN ACCENT BRICK AND ACCENT MORTAR COLOR FOR THE ROWLOCK WINDOW SILLS.	
PROVIDE AN ACCENT BRICK AND ACCENT MORTAR COLOR FOR THE HERRIBONE PATTERN.	
TYPICAL BRICK VENEER SHALL MATCH EXISTING SIZE, COLOR AND TEXTURE. SEE ALLOWANCES.	
TYPICAL BRICK MORTAR SHALL MATCH EXISTING COLOR. SEE ALLOWANCES.	



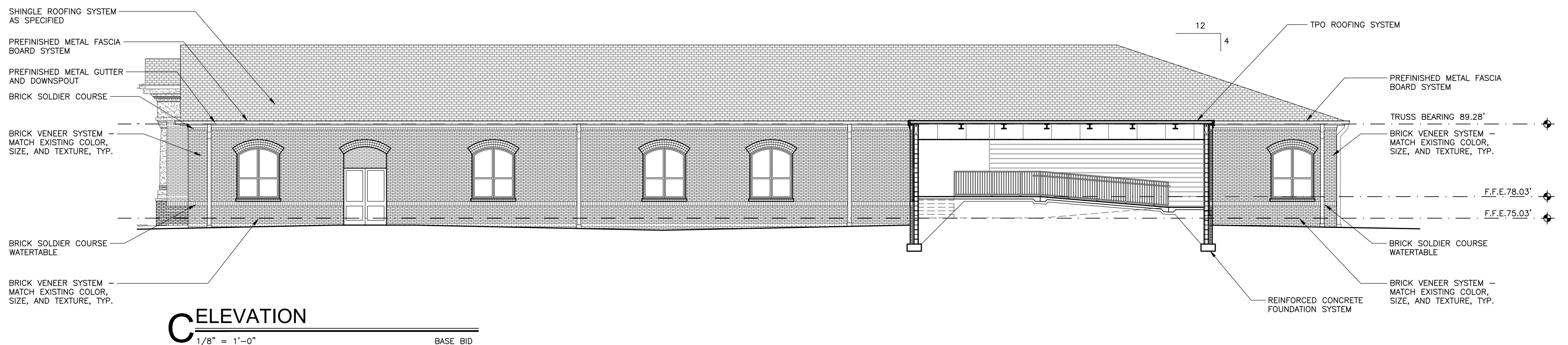
1 BRICK ACCENT PANEL DETAIL
1/4" = 1'-0"



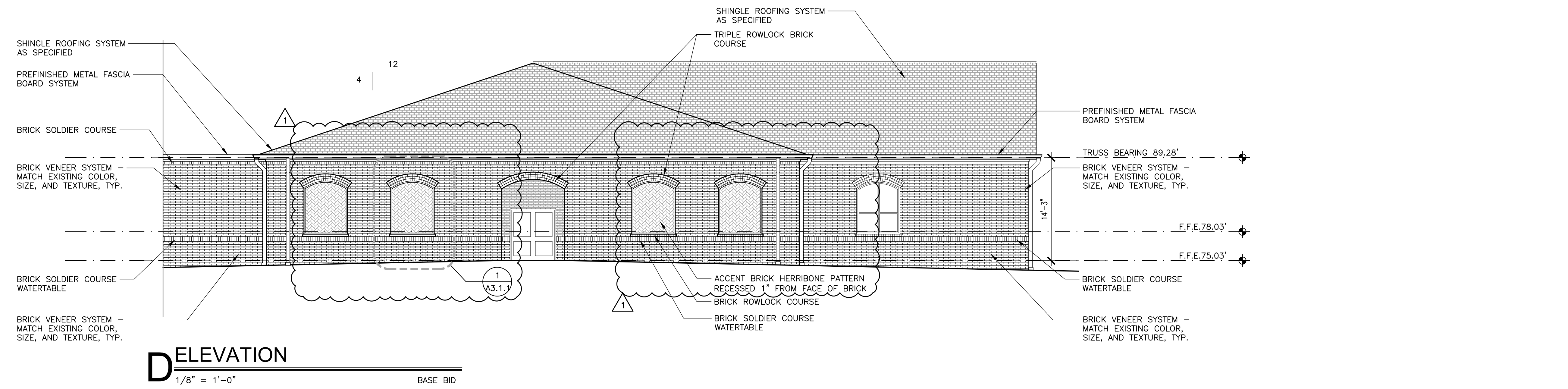
A ELEVATION
1/8" = 1'-0" BASE BID



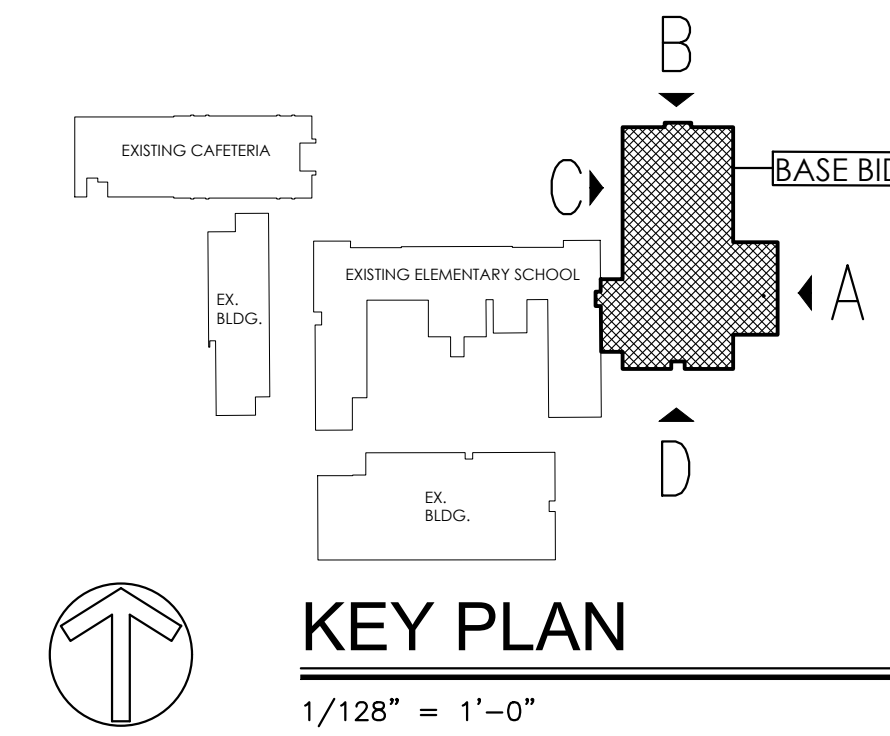
B ELEVATION
1/8" = 1'-0" BASE BID



C ELEVATION
1/8" = 1'-0" BASE BID



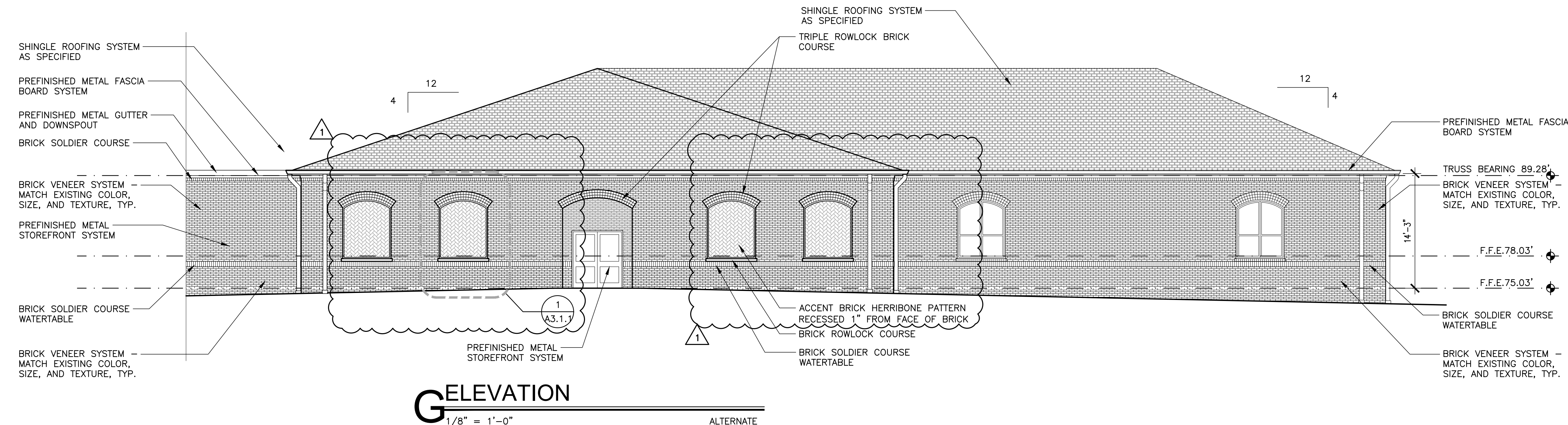
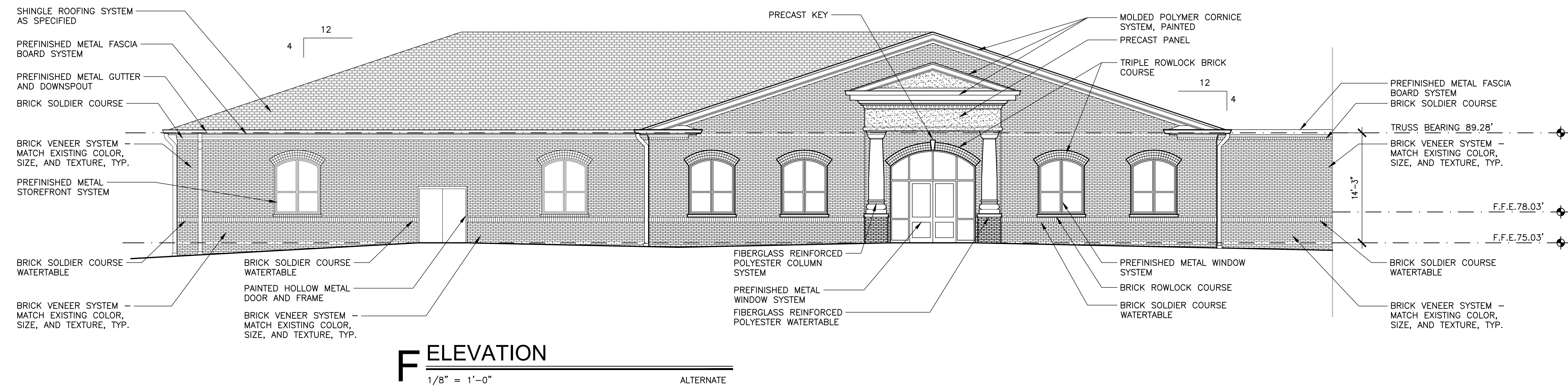
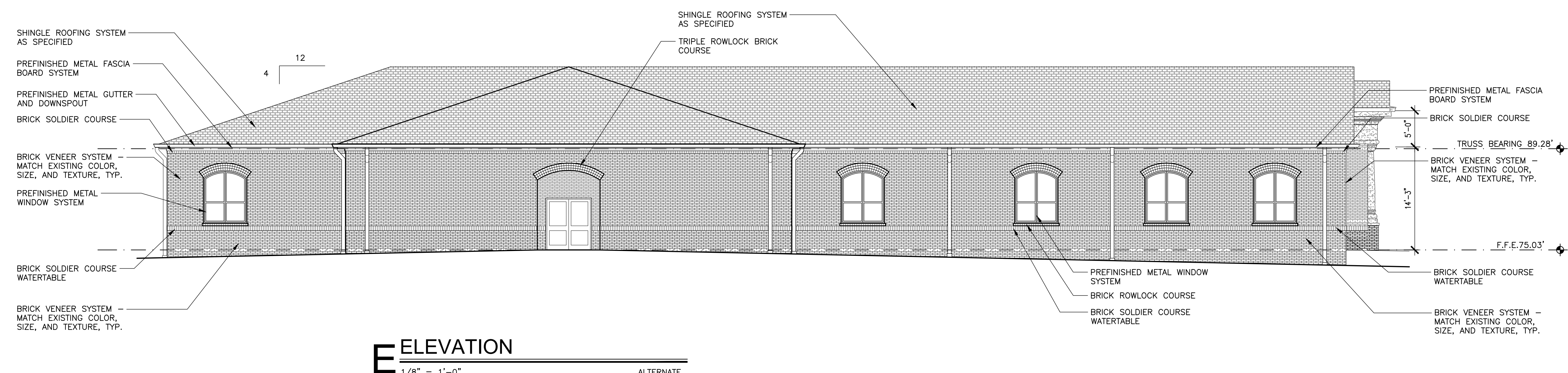
D ELEVATION
1/8" = 1'-0" BASE BID



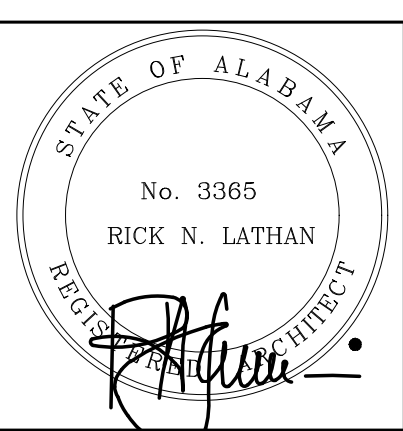


LATHAN
ARCHITECTS
LATHAN • BRYANT • CALMA

GENERAL ELEVATION NOTES	
COORDINATE DOWNSPOUT LOCATIONS BETWEEN ELEVATIONS AND ROOF PLANS.	
PROVIDE AN ACCENT BRICK AND ACCENT MORTAR COLOR FOR THE SOLDIER COURSE WATERTABLE.	
PROVIDE AN ACCENT BRICK AND ACCENT MORTAR COLOR FOR THE SOLDIER COURSE AT THE FRIEZE BOARD.	
PROVIDE AN ACCENT BRICK AND ACCENT MORTAR COLOR FOR THE ARCHED TRIPLE ROWLOCK HEAD.	
PROVIDE AN ACCENT BRICK AND ACCENT MORTAR COLOR FOR THE ROWLOCK WINDOW SILLS.	
PROVIDE AN ACCENT BRICK AND ACCENT MORTAR COLOR FOR THE HERRIBONE PATTERN.	
TYPICAL BRICK VENEER SHALL MATCH EXISTING SIZE, COLOR AND TEXTURE. SEE ALLOWANCES.	
TYPICAL BRICK MORTAR SHALL MATCH EXISTING COLOR. SEE ALLOWANCES.	



ADDITION AND RENOVATION FOR
FLOMATON ELEMENTARY SCHOOL
PACKAGE A: MEDIA CENTER AND CLASSROOM ADDITION
1634 POPULAR STREET, FLOMATON, AL 36441
ESCAMBIA COUNTY BOARD OF EDUCATION



SHEET TITLE:
ALTERNATE ELEVATIONS

PROJ. MGR.: R. LATHAN
DRAWN: S. WILSON
DATE: FEBRUARY 18, 2022
REVISIONS
1 ADDENDUM NO.3

JOB NO. 21-04A

SHEET NO:

A3.1.2

12 OF 29

