

**LATHAN**  
**ARCHITECTS**  
LATHAN ■ BRYANT ■ CALMA

300 CHASE PARK SOUTH • SUITE 200 • HOOVER, ALABAMA 35244  
205-988-9112

**ADDENDUM NO. 2**  
**ADDITION AND RENOVATIONS TO CAFETERIA**  
**AT SALTER ELEMENTARY SCHOOL**  
**ARCHITECT JOB NO. 22-10**  
**August 15, 2022**  
**DCM #2021800**

---

**BIDS DUE:**

**Tuesday, August 16, 2022 until**  
**2:00 p.m., local time**  
**Talladega City Board of Education**  
**501 South Street East**  
**Talladega, AL 35160**

---

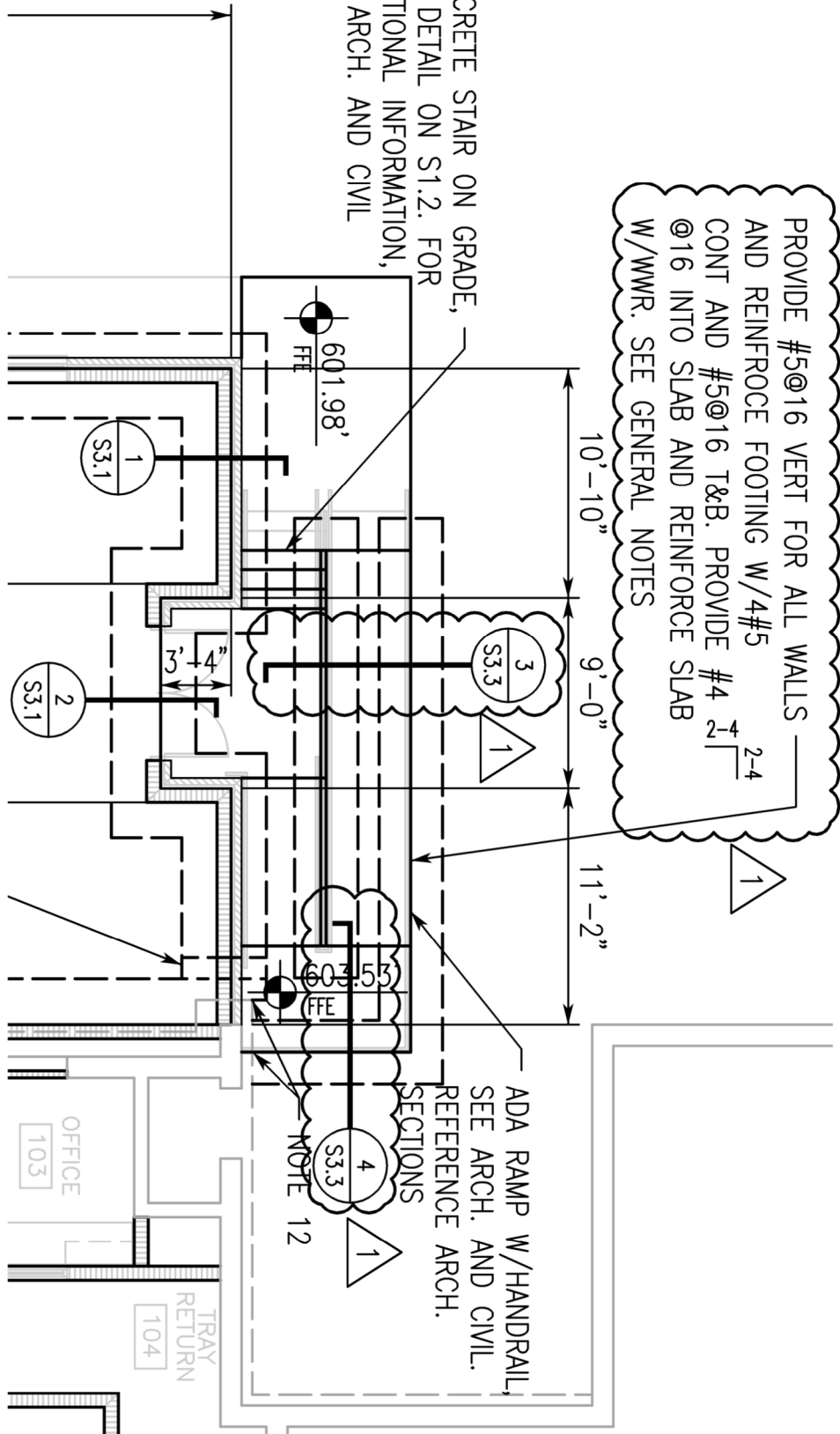
The Plans and Specifications are hereby amended. The following supersedes all contrary and/or conflicting information and is made part of the contract documents.

---

**DRAWINGS**

1. **SSD2.1, SSD2.2 and SD2.3** added details regarding ramp footing and wall reinforcement.

CONCRETE STAIR ON GRADE,  
SEE DETAIL ON S1.2. FOR  
ADDITIONAL INFORMATION,  
SEE ARCH. AND CIVIL



## FOUNDATION PLAN

1/8"=1'-0"



8/15/2022

SDG

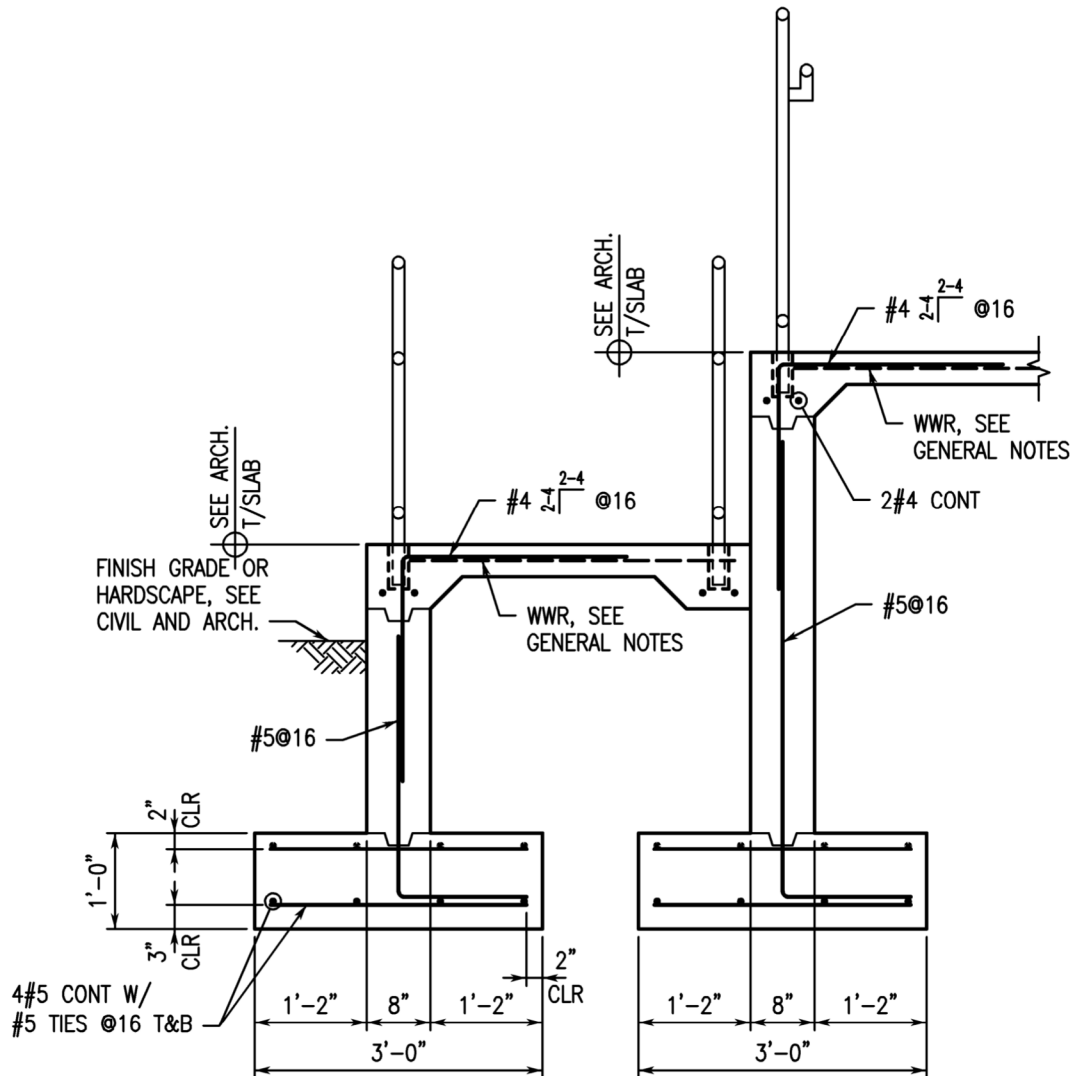
STRUCTURAL DESIGN GROUP

300 Chase Park South, Suite 125  
Hoover, AL 35244  
tel 205-824-5200  
fax 205-824-5280  
Job Number 22-114



LATHAN  
ARCHITECTS  
LATHAN • BRYANT • CALMA

SHEET NO.  
**SSD 2.1**  
1 OF 3



**SDG**  
STRUCTURAL DESIGN GROUP

300 Chase Park South, Suite 125  
Hoover, AL 35244  
tel 205-824-5200  
fax 205-824-5280  
Job Number 22-114



**LATHAN**  
ARCHITECTS  
LATHAN • BRYANT • CALMA

PROJECT:  
ADDITION AND RENOVATIONS TO CAFETERIA AT  
SALTER ELEMENTARY SCHOOL

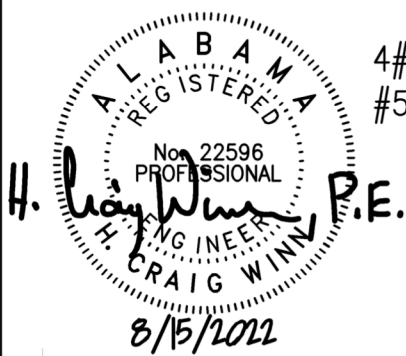
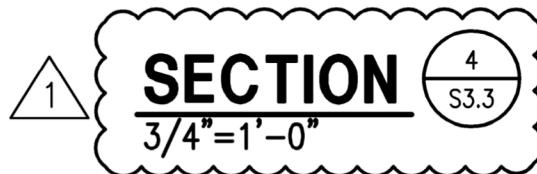
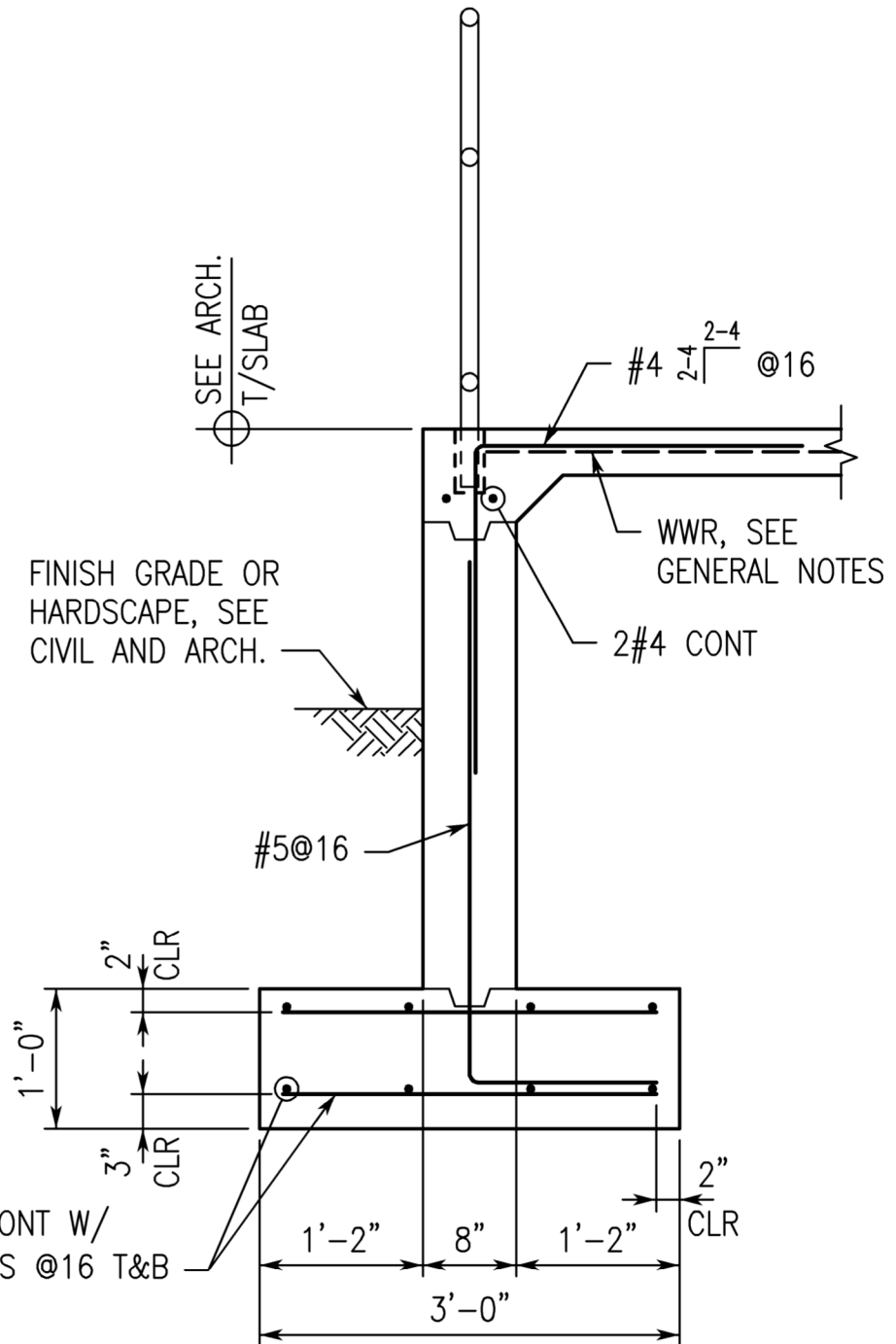
STRUCTURAL SUPPLEMENTAL DRAWING  
DRAWING REVISIONS TO SHEET NO. S3.3

PROJECT NO.  
22-10

DATE:  
08-15-2022

REFERENCE:  
ADDENDUM NO. 2

SHEET NO.  
**SSD 2.2**  
2 OF 3



**SDG**

STRUCTURAL DESIGN GROUP

300 Chase Park South, Suite 125  
Hoover, AL 35244  
tel 205-824-5200  
fax 205-824-5280  
Job Number 22-114



**LATHAN**  
ARCHITECTS  
LATHAN • BRYANT • CALMA

PROJECT:  
ADDITION AND RENOVATIONS TO CAFETERIA AT  
SALTER ELEMENTARY SCHOOL

STRUCTURAL SUPPLEMENTAL DRAWING  
DRAWING REVISIONS TO SHEET NO. S3.3

PROJECT NO.  
22-10

DATE:  
08-15-2022

REFERENCE:  
ADDENDUM NO. 2

SHEET NO.  
**SSD 2.3**  
3 OF 3