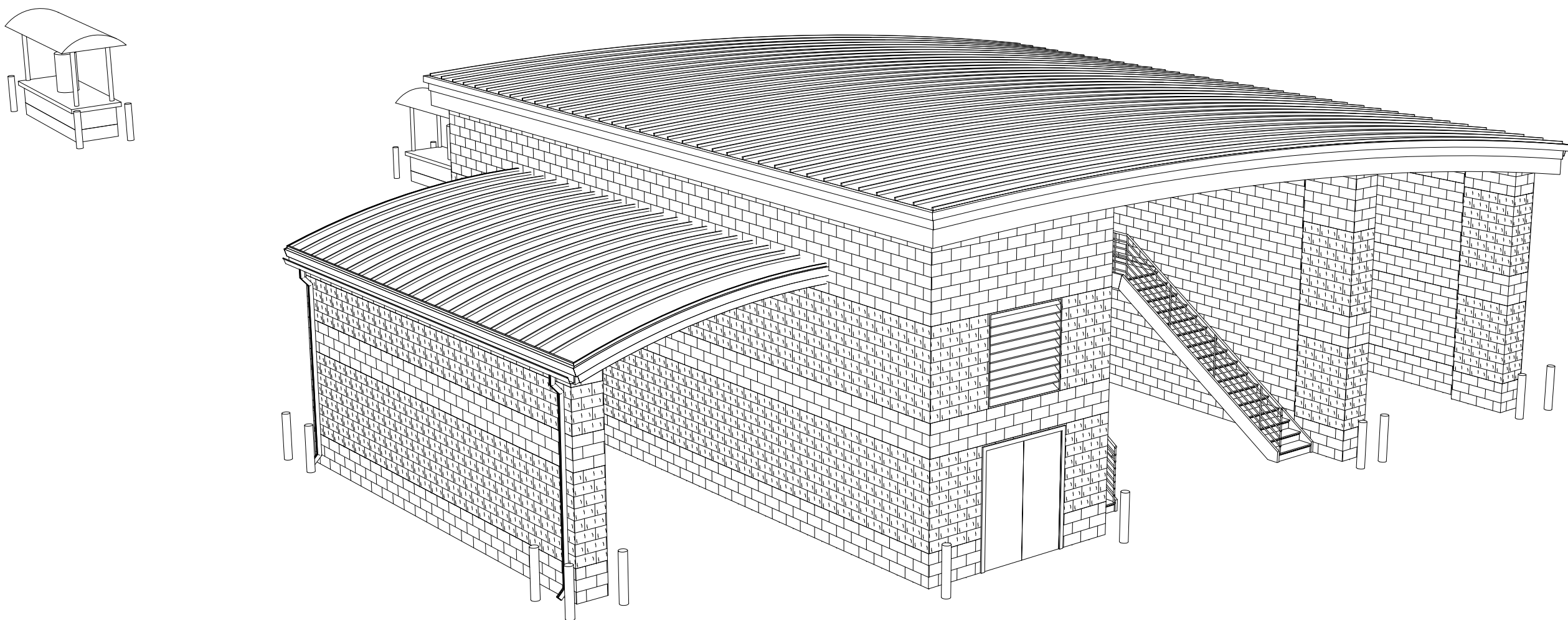


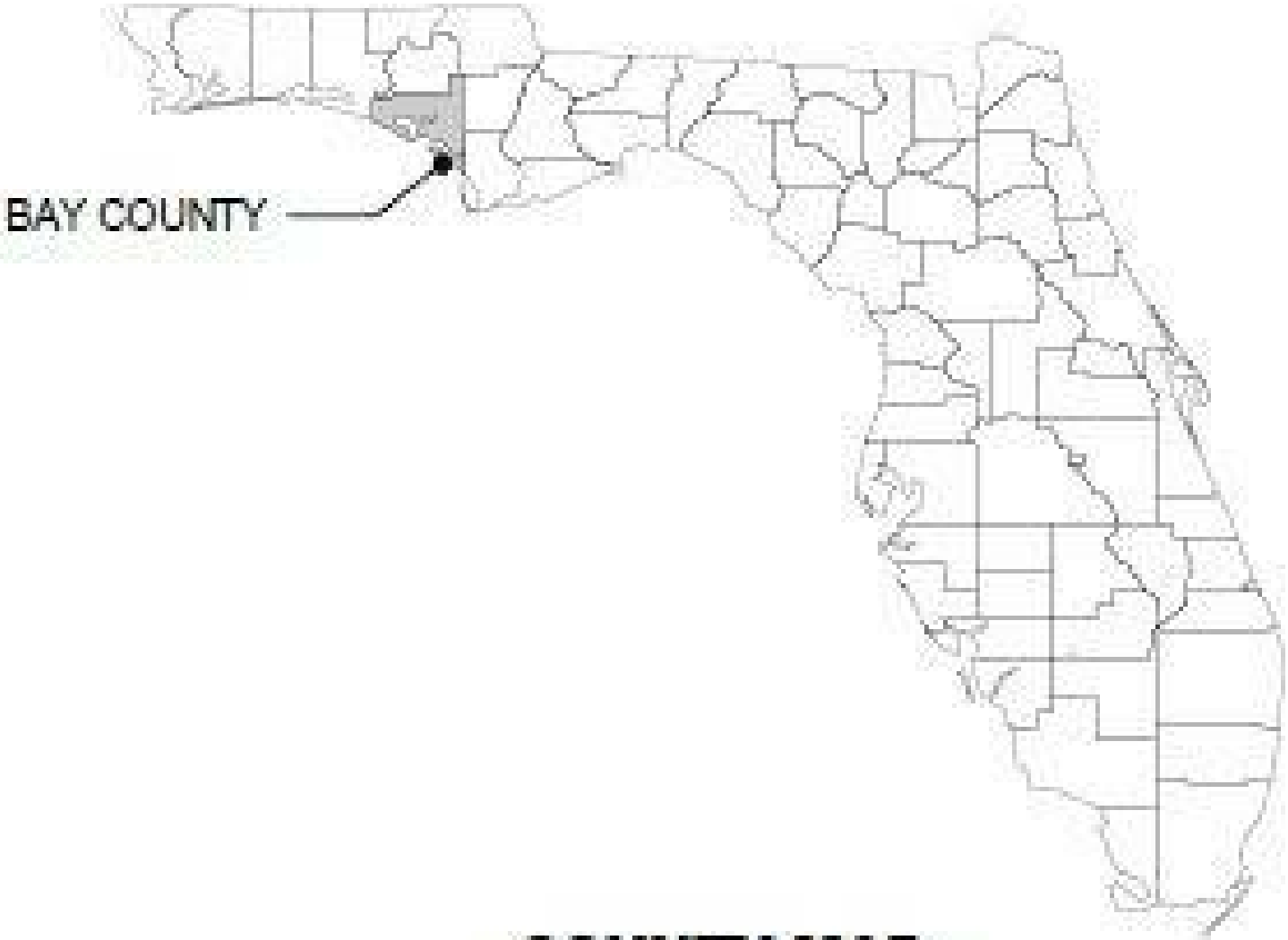
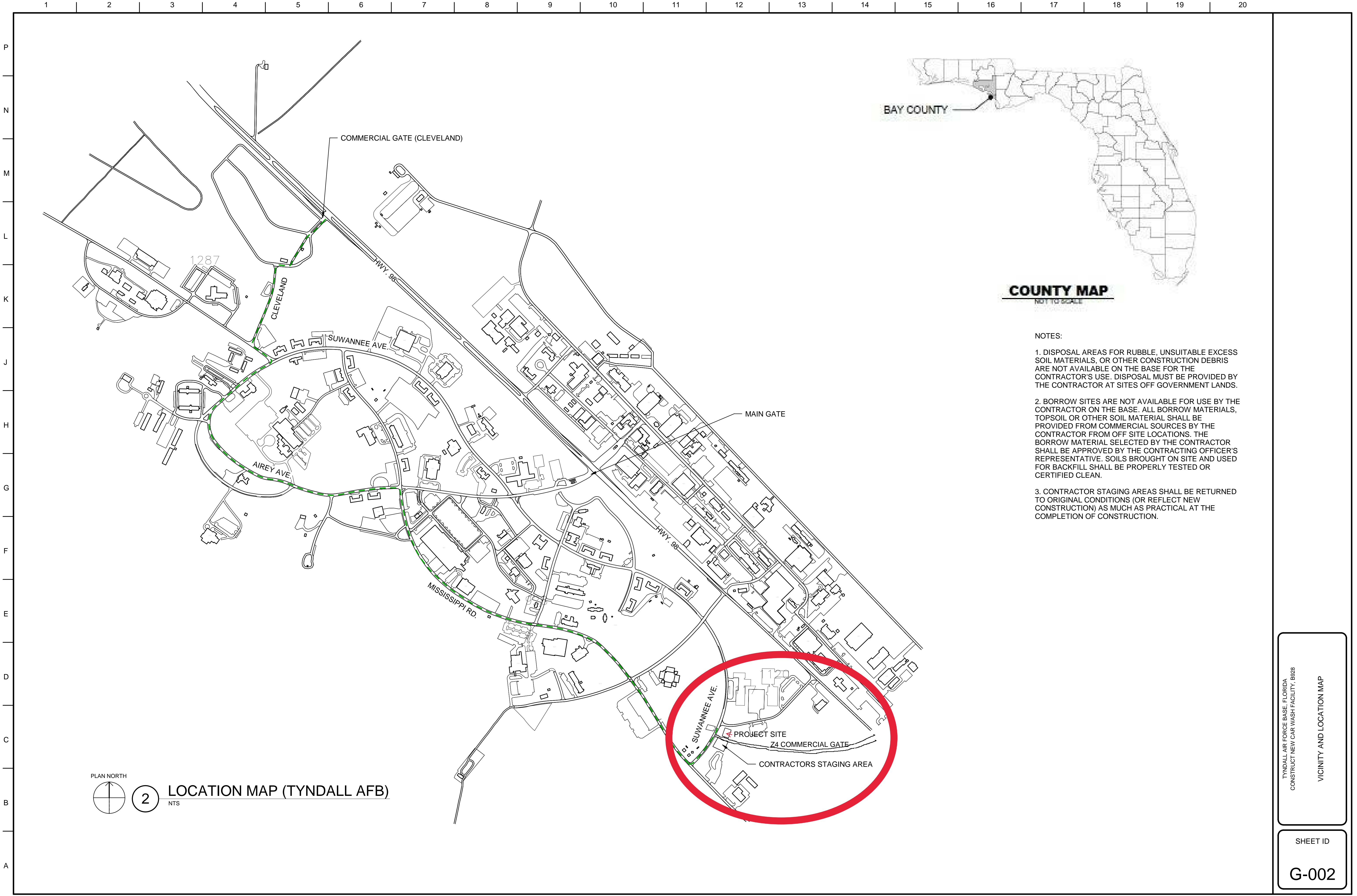
SHEET INDEX

SHEET NO. SHEET TITLE	
GENERAL	
G-001	COVER SHEET AND DRAWING INDEX
G-002	VICINITY AND LOCATION MAP
LIFE SAFETY	
LS101	LIFE SAFETY PLAN
CIVIL	
C-200	EXISTING CONDITONS AND REMOVALS
C-201	SITE PLAN
C-202	UTILITY PLAN
ARCHITECTURAL	
AS101	ARCHITECTURAL SITE PLAN
A-101	FLOOR PLAN
A-102	REFLECTED CEILING PLAN
A-103	ROOF PLAN
A-201	BUILDING ELEVATIONS
ELECTRICAL	
ES101	ELECTRICAL SITE PLAN

DESIGN BUILD NEW CAR WASH

TYNDALL AIR FORCE BASE, FLORIDA
BAY COUNTY





COUNTY MAP
NOT TO SCALE

- NOTES:
1. DISPOSAL AREAS FOR RUBBLE, UNSUITABLE EXCESS SOIL MATERIALS, OR OTHER CONSTRUCTION DEBRIS ARE NOT AVAILABLE ON THE BASE FOR THE CONTRACTOR'S USE. DISPOSAL MUST BE PROVIDED BY THE CONTRACTOR AT SITES OFF GOVERNMENT LANDS.
 2. BORROW SITES ARE NOT AVAILABLE FOR USE BY THE CONTRACTOR ON THE BASE. ALL BORROW MATERIALS, TOPSOIL OR OTHER SOIL MATERIAL SHALL BE PROVIDED FROM COMMERCIAL SOURCES BY THE CONTRACTOR FROM OFF SITE LOCATIONS. THE BORROW MATERIAL SELECTED BY THE CONTRACTOR SHALL BE APPROVED BY THE CONTRACTING OFFICER'S REPRESENTATIVE. SOILS BROUGHT ON SITE AND USED FOR BACKFILL SHALL BE PROPERLY TESTED OR CERTIFIED CLEAN.
 3. CONTRACTOR STAGING AREAS SHALL BE RETURNED TO ORIGINAL CONDITIONS (OR REFLECT NEW CONSTRUCTION) AS MUCH AS PRACTICAL AT THE COMPLETION OF CONSTRUCTION.



2

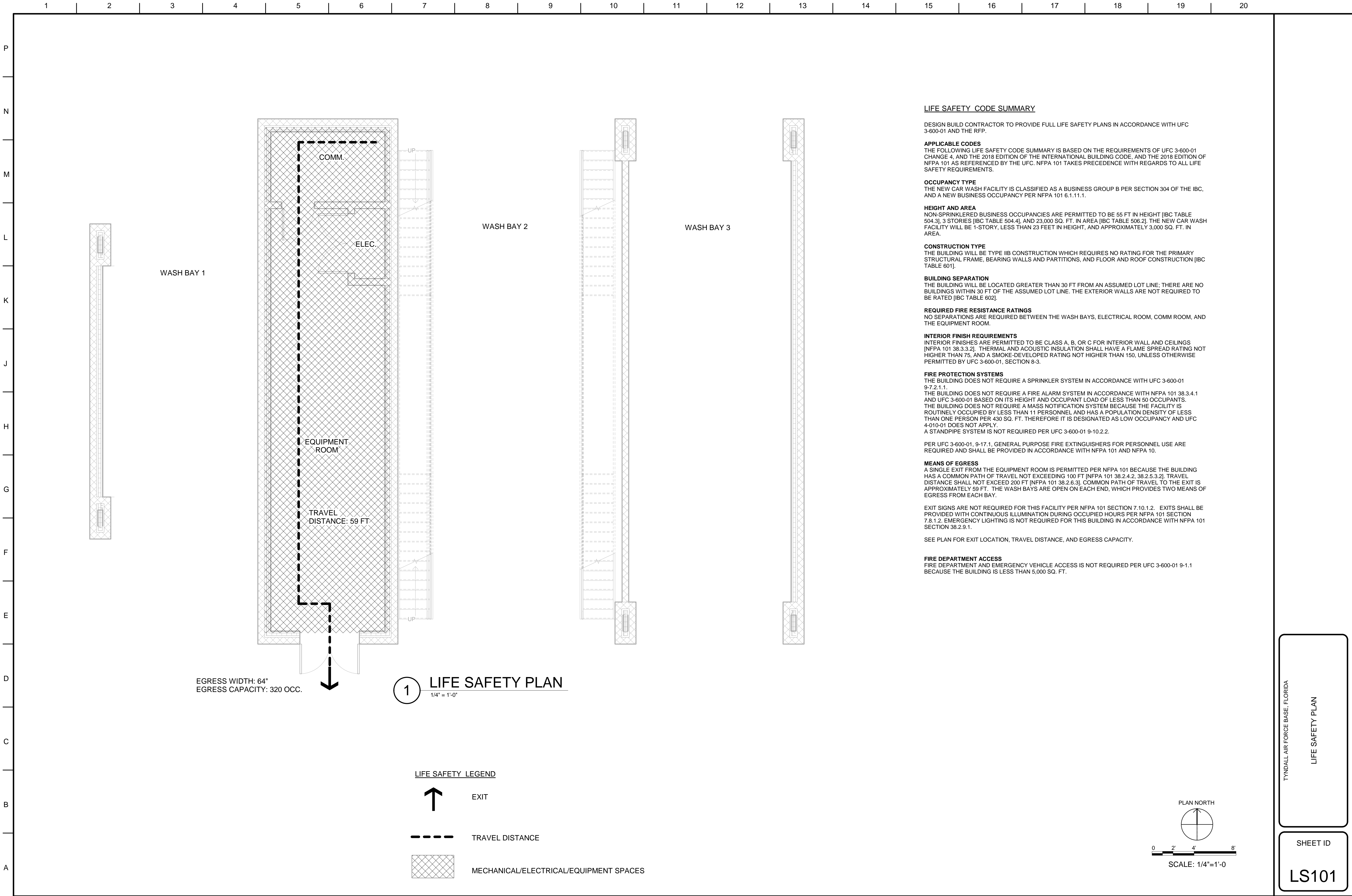
LOCATION MAP (TYNDALL AFB)
NTS

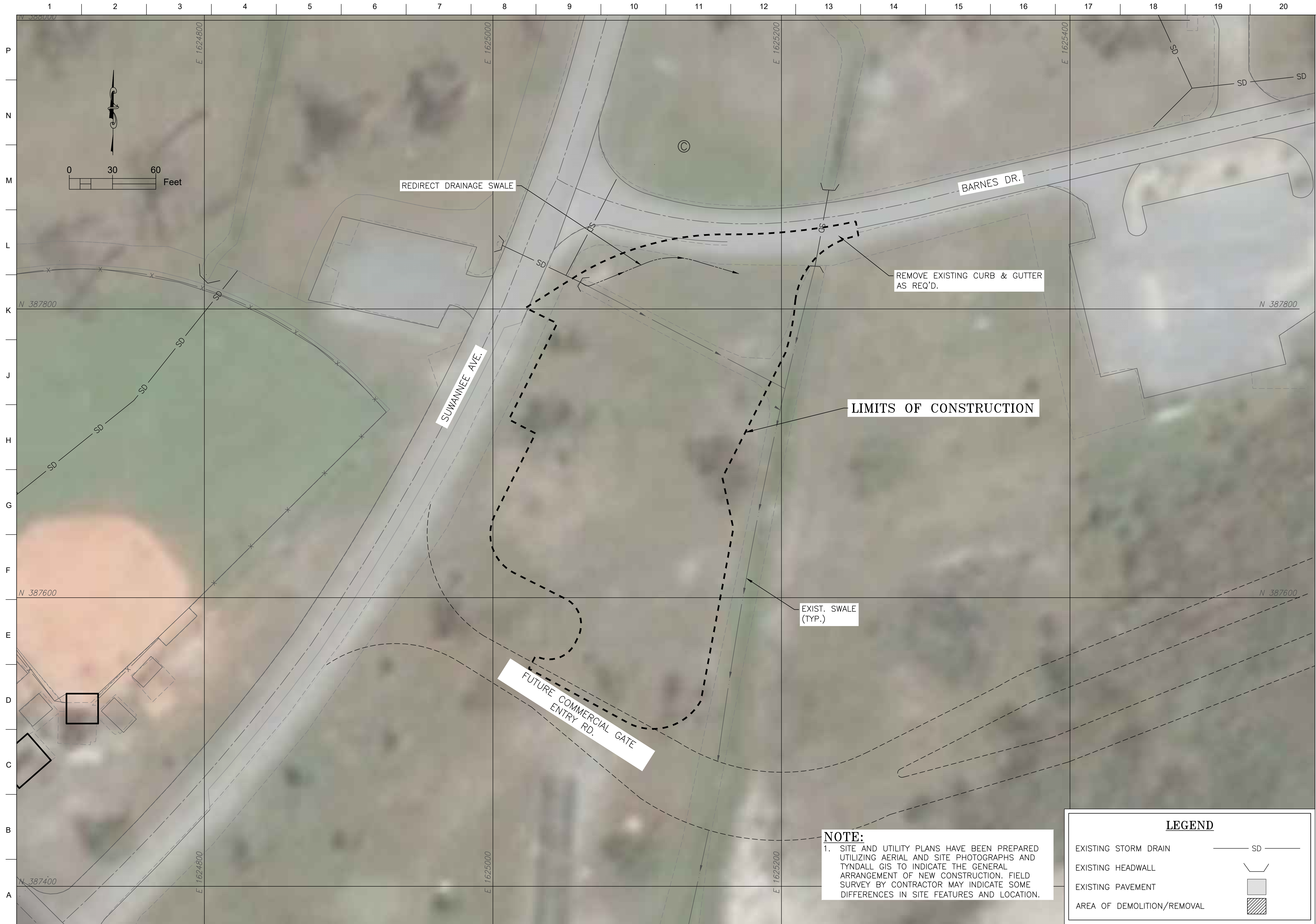
TYNDALL AIR FORCE BASE, FLORIDA
CONSTRUCT NEW CAR WASH FACILITY, B928

VICINITY AND LOCATION MAP

SHEET ID

G-002

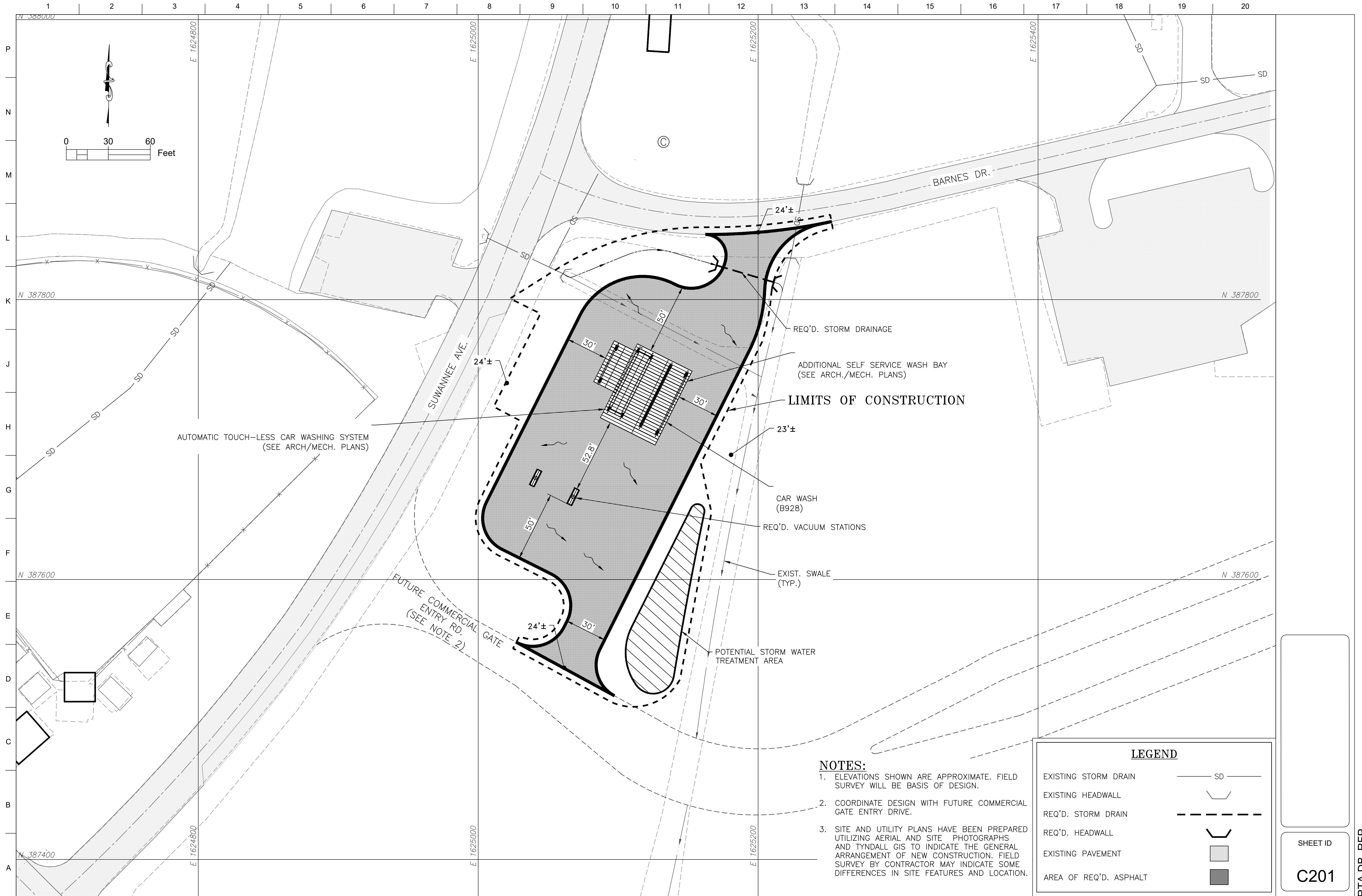




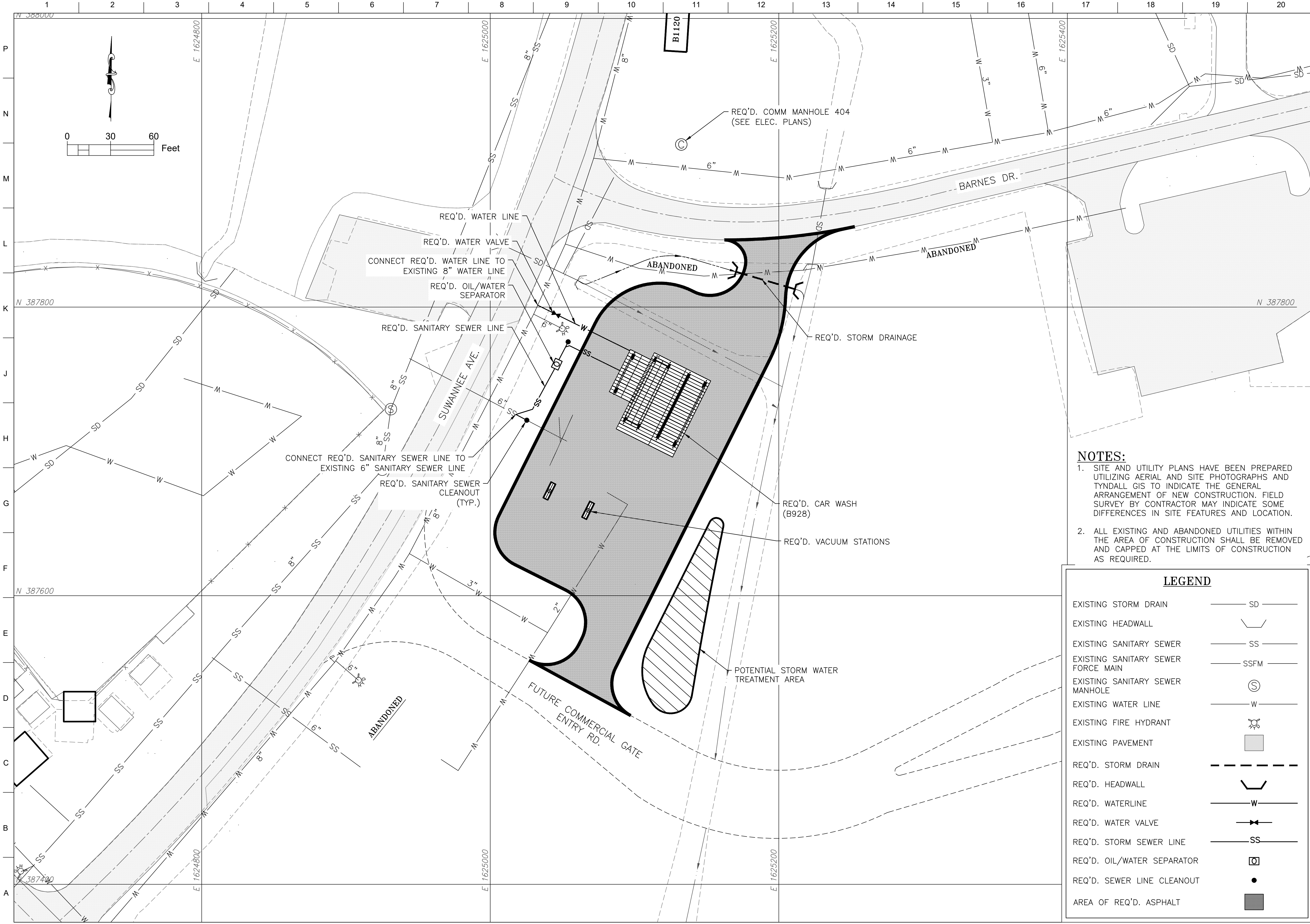
NOTE:
1. SITE AND UTILITY PLANS HAVE BEEN PREPARED UTILIZING AERIAL AND SITE PHOTOGRAPHS AND TYNDALL GIS TO INDICATE THE GENERAL ARRANGEMENT OF NEW CONSTRUCTION. FIELD SURVEY BY CONTRACTOR MAY INDICATE SOME DIFFERENCES IN SITE FEATURES AND LOCATION.

LEGEND	
EXISTING STORM DRAIN	SD
EXISTING HEADWALL	
EXISTING PAVEMENT	
AREA OF DEMOLITION/REMOVAL	

SHEET ID
C200



SHEET ID
C201



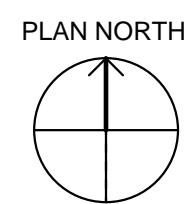
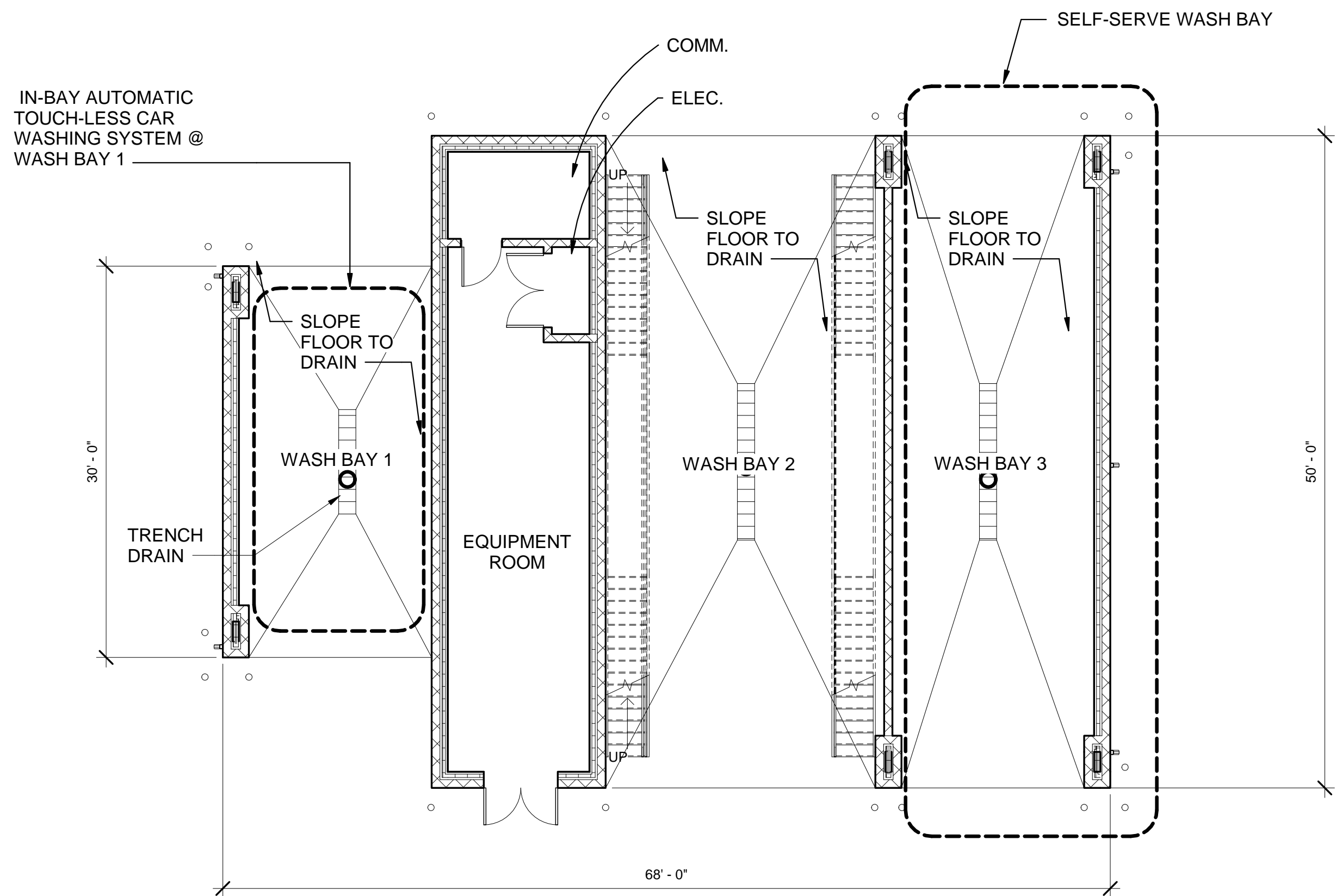
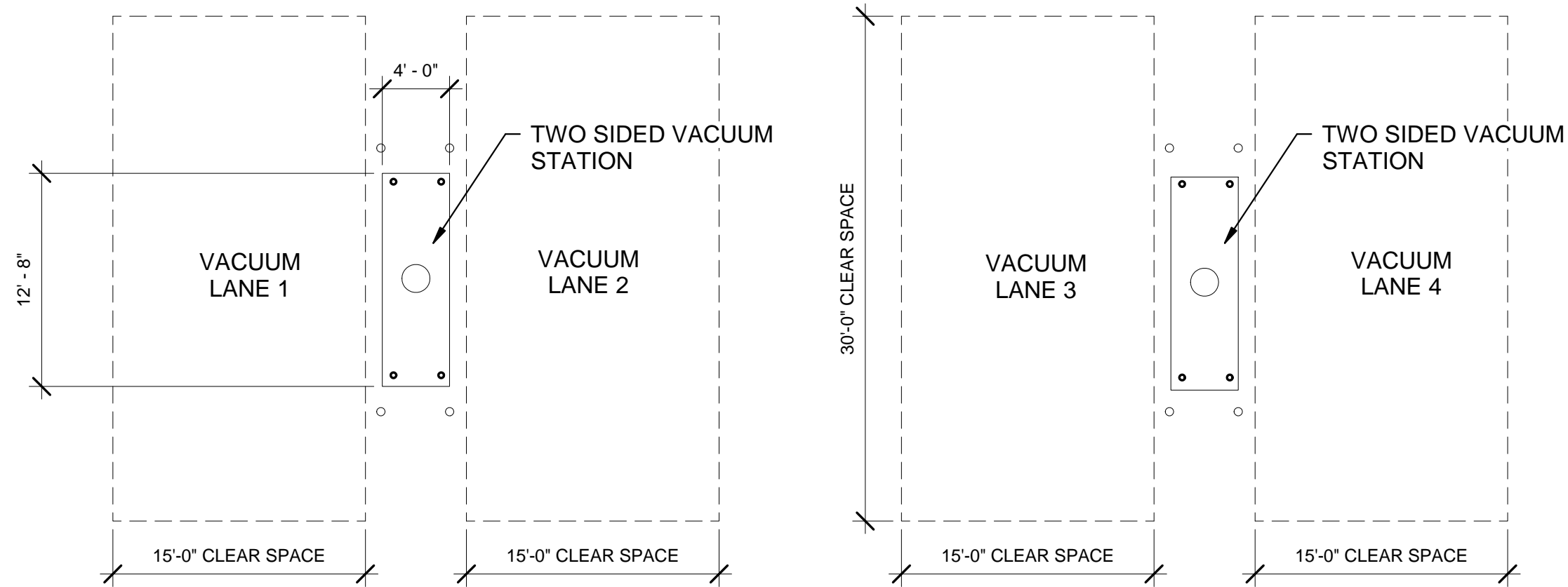
- NOTES:**
- SITE AND UTILITY PLANS HAVE BEEN PREPARED UTILIZING AERIAL AND SITE PHOTOGRAPHS AND TYNDALL GIS TO INDICATE THE GENERAL ARRANGEMENT OF NEW CONSTRUCTION. FIELD SURVEY BY CONTRACTOR MAY INDICATE SOME DIFFERENCES IN SITE FEATURES AND LOCATION.
 - ALL EXISTING AND ABANDONED UTILITIES WITHIN THE AREA OF CONSTRUCTION SHALL BE REMOVED AND CAPPED AT THE LIMITS OF CONSTRUCTION AS REQUIRED.

LEGEND	
EXISTING STORM DRAIN	SD
EXISTING HEADWALL	
EXISTING SANITARY SEWER	SS
EXISTING SANITARY SEWER FORCE MAIN	SSFM
EXISTING SANITARY SEWER MANHOLE	Ⓢ
EXISTING WATER LINE	W
EXISTING FIRE HYDRANT	
EXISTING PAVEMENT	
REQ'D. STORM DRAIN	---
REQ'D. HEADWALL	
REQ'D. WATERLINE	W
REQ'D. WATER VALVE	✕
REQ'D. STORM SEWER LINE	SS
REQ'D. OIL/WATER SEPARATOR	
REQ'D. SEWER LINE CLEANOUT	•
AREA OF REQ'D. ASPHALT	

SHEET ID	
C202	
RTA DB RFP	
DATE	
DESCRIPTION	
MARK	
SOLICITATION NO.:	
TBD.	
SUBMITTED BY:	
OPTION TITLE 2	
ANSI D. OPTION FIELD 2	
DRAWN BY:	
TBD.	

1 2 3 4 5 6 7 8 9 10 11 12 13 14 15 16 17 18 19 20

P
N
M
L
K
J
H
G
F
E
D
C
B
A



1

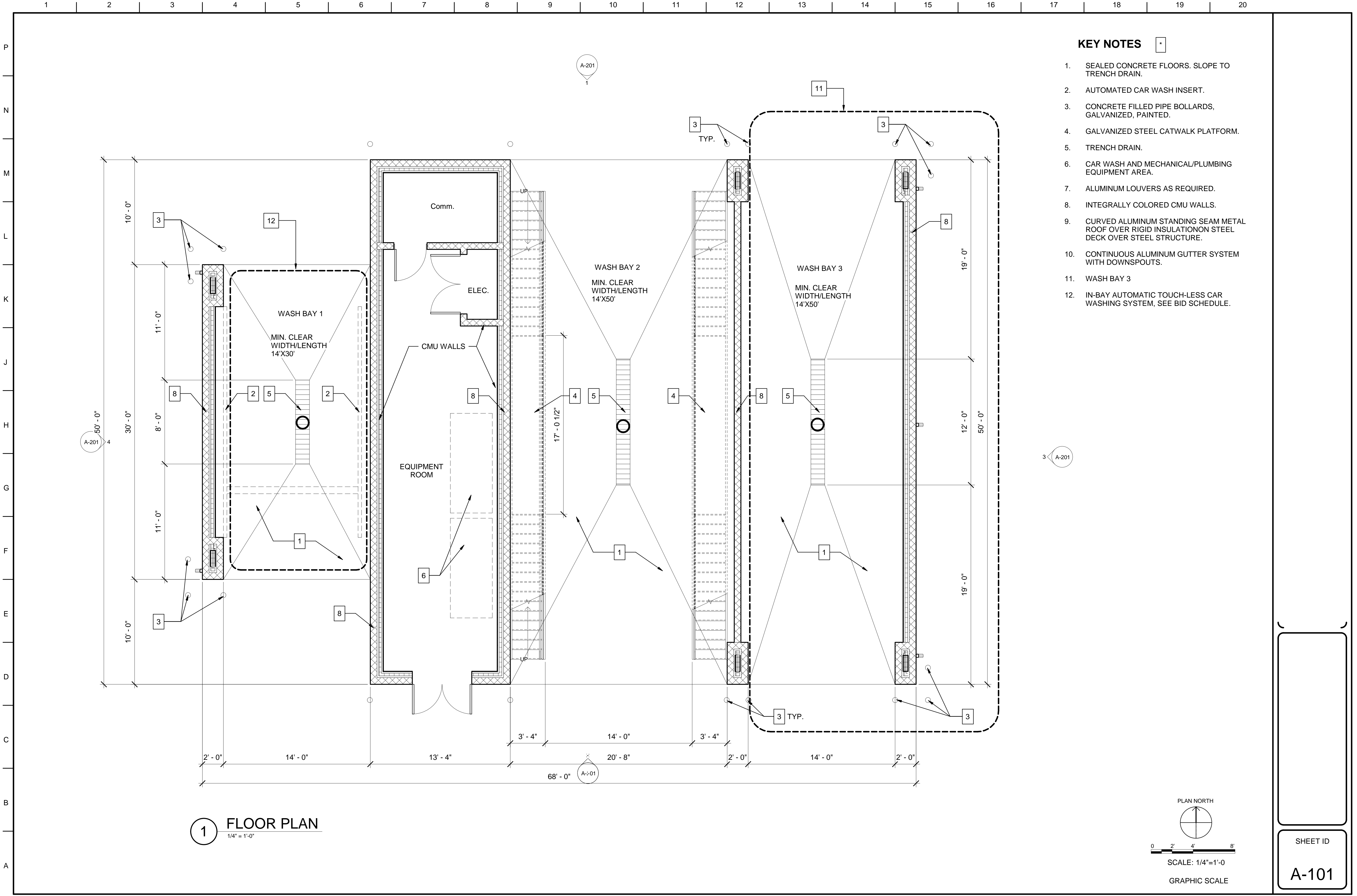
ARCHITECTURAL SITE PLAN

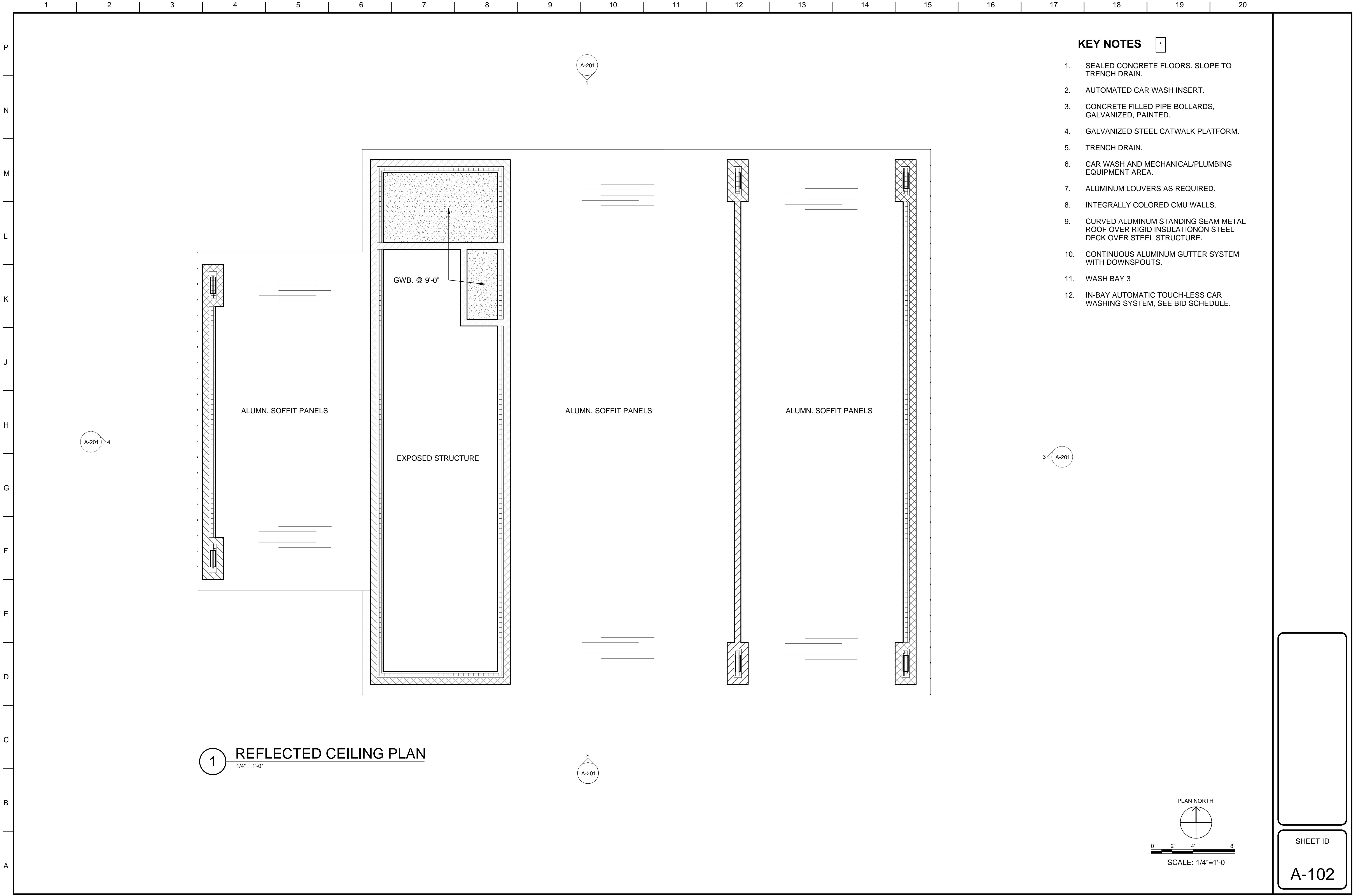
1/8" = 1'-0"

0 4' 8' 16'
SCALE: 1/8"=1'-0

SHEET ID

AS101

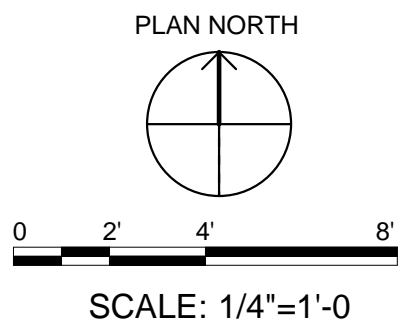




KEY NOTES

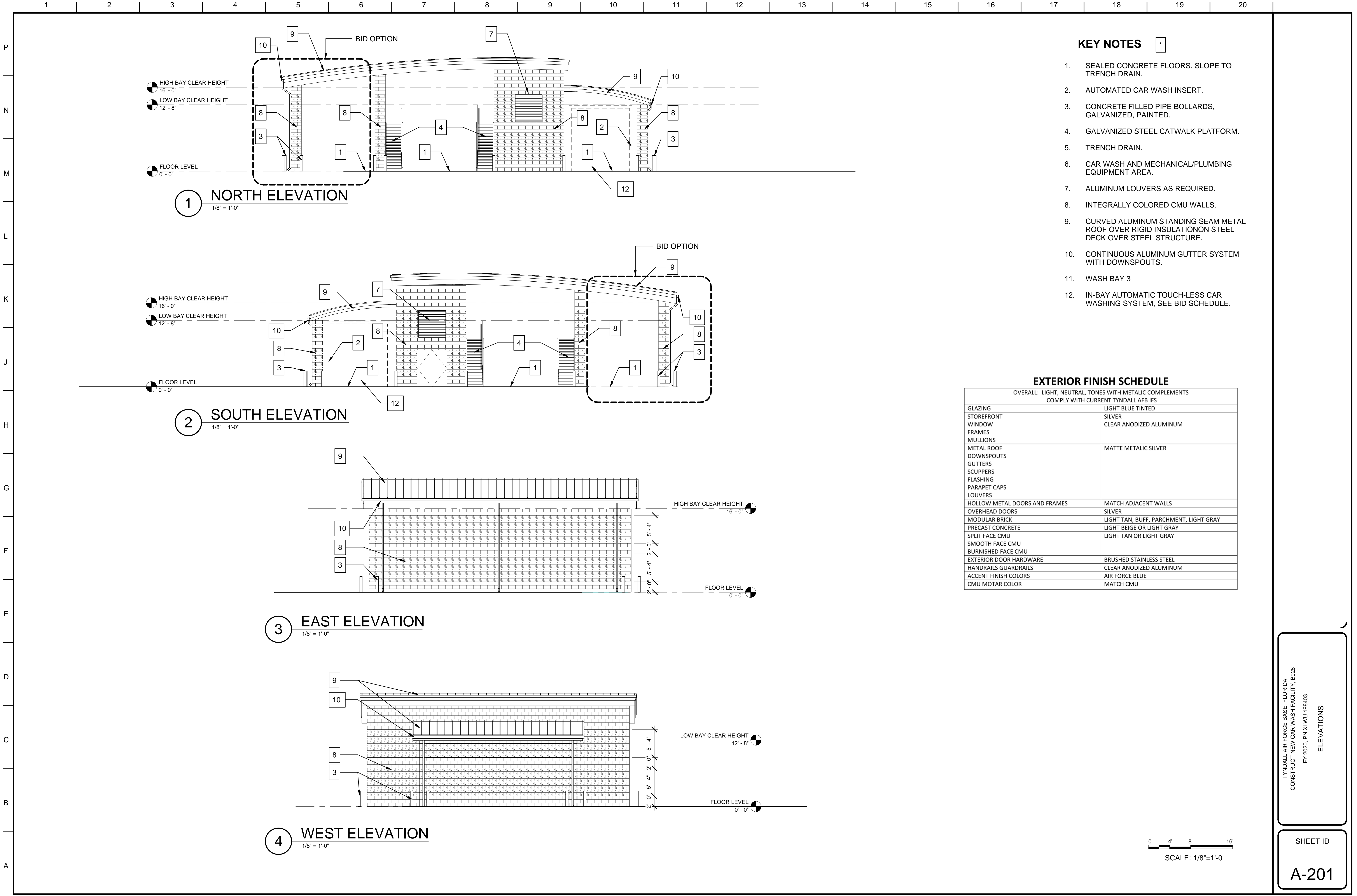
1. SEALED CONCRETE FLOORS. SLOPE TO TRENCH DRAIN.
2. AUTOMATED CAR WASH INSERT.
3. CONCRETE FILLED PIPE BOLLARDS, GALVANIZED, PAINTED.
4. GALVANIZED STEEL CATWALK PLATFORM.
5. TRENCH DRAIN.
6. CAR WASH AND MECHANICAL/PLUMBING EQUIPMENT AREA.
7. ALUMINUM LOUVERS AS REQUIRED.
8. INTEGRALLY COLORED CMU WALLS.
9. CURVED ALUMINUM STANDING SEAM METAL ROOF OVER RIGID INSULATION ON STEEL DECK OVER STEEL STRUCTURE.
10. CONTINUOUS ALUMINUM GUTTER SYSTEM WITH DOWNSPOUTS.
11. WASH BAY 3
12. IN-BAY AUTOMATIC TOUCH-LESS CAR WASHING SYSTEM, SEE BID SCHEDULE.

1 REFLECTED CEILING PLAN
1/4" = 1'-0"



SHEET ID

A-102



KEY NOTES

- 1. SEALED CONCRETE FLOORS. SLOPE TO TRENCH DRAIN.
- 2. AUTOMATED CAR WASH INSERT.
- 3. CONCRETE FILLED PIPE BOLLARDS, GALVANIZED, PAINTED.
- 4. GALVANIZED STEEL CATWALK PLATFORM.
- 5. TRENCH DRAIN.
- 6. CAR WASH AND MECHANICAL/PLUMBING EQUIPMENT AREA.
- 7. ALUMINUM LOUVERS AS REQUIRED.
- 8. INTEGRALLY COLORED CMU WALLS.
- 9. CURVED ALUMINUM STANDING SEAM METAL ROOF OVER RIGID INSULATION ON STEEL DECK OVER STEEL STRUCTURE.
- 10. CONTINUOUS ALUMINUM GUTTER SYSTEM WITH DOWNSPOUTS.
- 11. WASH BAY 3
- 12. IN-BAY AUTOMATIC TOUCH-LESS CAR WASHING SYSTEM, SEE BID SCHEDULE.

EXTERIOR FINISH SCHEDULE

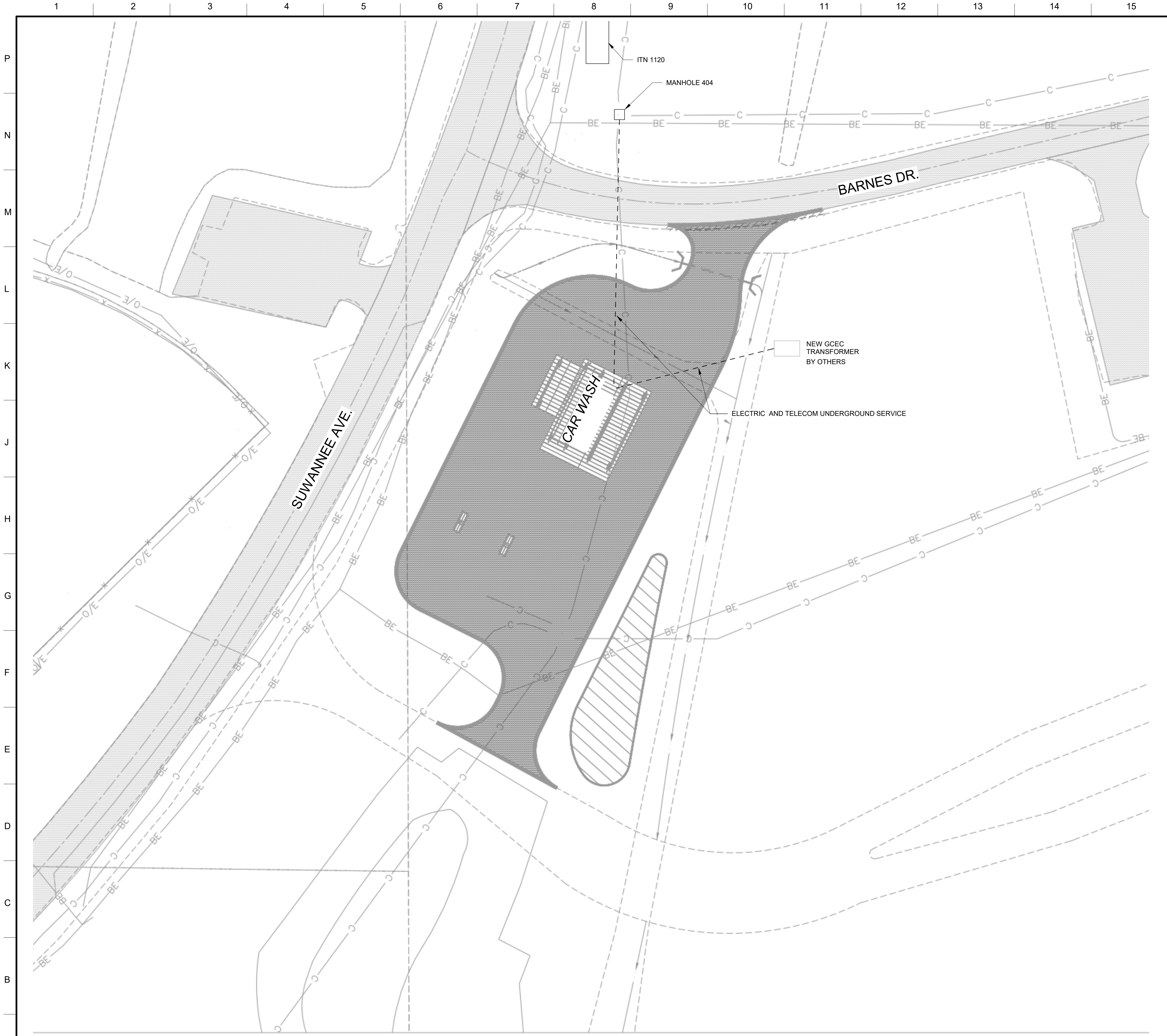
OVERALL: LIGHT, NEUTRAL, TONES WITH METALIC COMPLEMENTS COMPLY WITH CURRENT TYNDALL AFB IFS	
GLAZING	LIGHT BLUE TINTED
STOREFRONT	SILVER
WINDOW FRAMES	CLEAR ANODIZED ALUMINUM
MULLIONS	
METAL ROOF	MATTE METALIC SILVER
DOWNSPOUTS	
GUTTERS	
SCUPPERS	
FLASHING	
PARAPET CAPS	
LOUVERS	
HOLLOW METAL DOORS AND FRAMES	MATCH ADJACENT WALLS
OVERHEAD DOORS	SILVER
MODULAR BRICK	LIGHT TAN, BUFF, PARCHMENT, LIGHT GRAY
PRECAST CONCRETE	LIGHT BEIGE OR LIGHT GRAY
SPLIT FACE CMU	LIGHT TAN OR LIGHT GRAY
SMOOTH FACE CMU	
BURNISHED FACE CMU	
EXTERIOR DOOR HARDWARE	BRUSHED STAINLESS STEEL
HANDRAILS GUARDRAILS	CLEAR ANODIZED ALUMINUM
ACCENT FINISH COLORS	AIR FORCE BLUE
CMU MOTAR COLOR	MATCH CMU

TYNDALL AIR FORCE BASE, FLORIDA
CONSTRUCT NEW CAR WASH FACILITY, B928
FY 2020, PN XLWU 199403

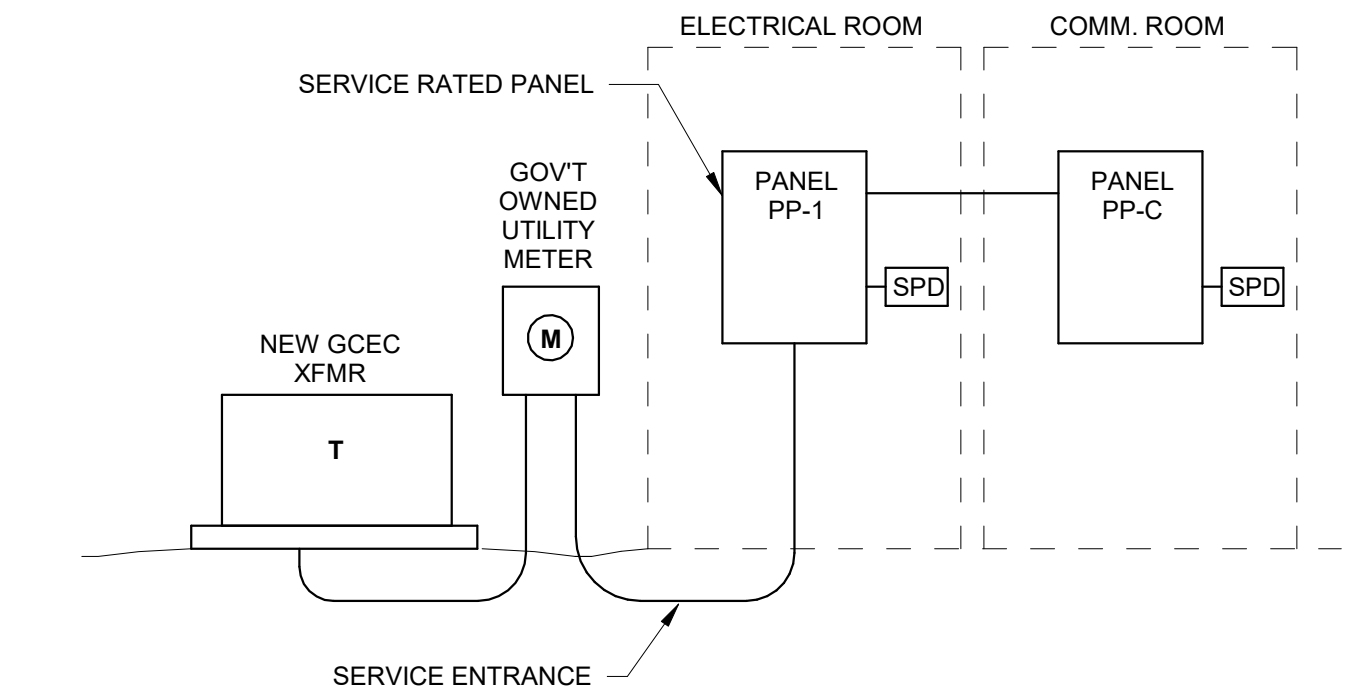
ELEVATIONS

SHEET ID

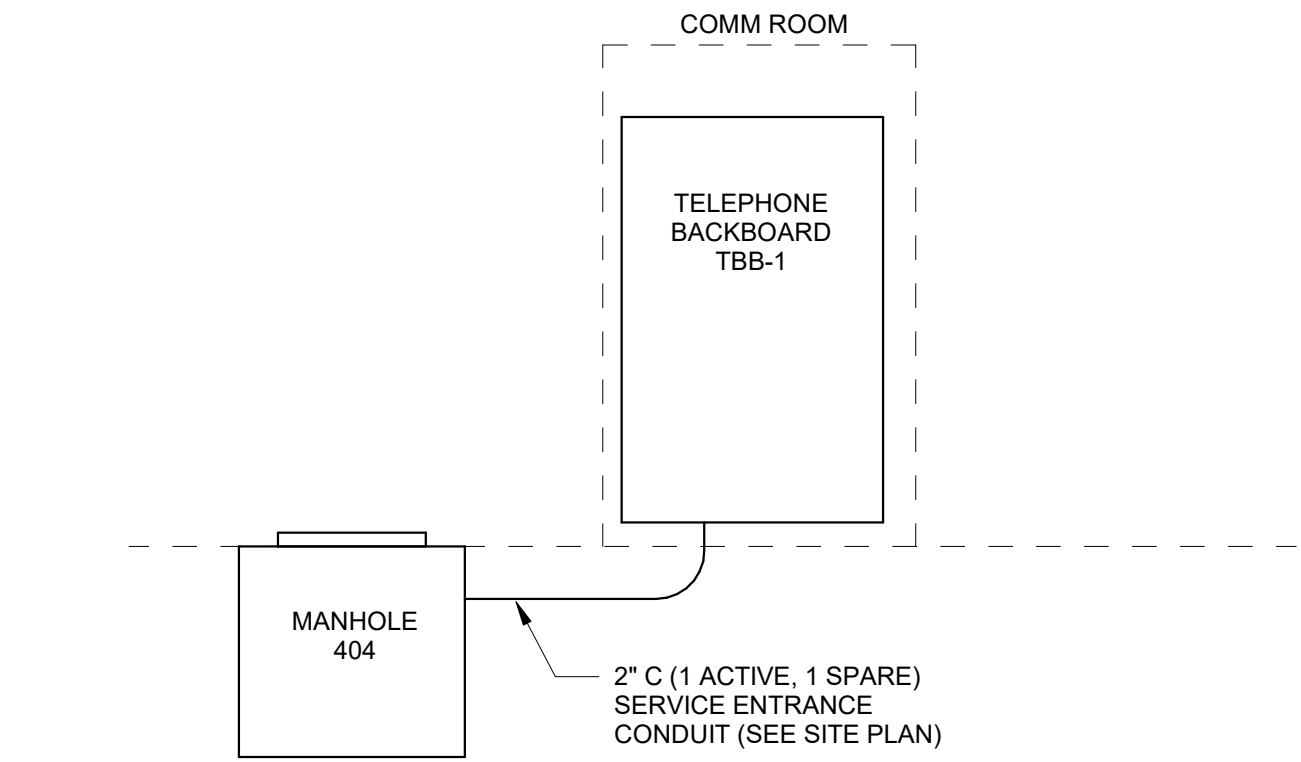
A-201



GENERAL NOTES	
#	DESCRIPTION
1	SIZE THE ELECTRIC SERVICE ENTRANCE EQUIPMENT PER RFP SECTION 15.4.1 DISTRIBUTION EQUIPMENT.
2	PROVIDE ELECTRICAL SERVICE ENTRANCE PER RFP SECTIONB 15.3, SITE POWER DISTRIBUTION.
3	PROVIDE TELECOM SERVICE ENTRANCE PER RFP SECTION 14.1.3, BACKBONE CABLING REQUIREMENTS.
4	REFER TO THE RFP SECTION 6.SITEWORK, GEOTECHNICAL AND LANDSCAPING FOR UTILITY JACKING AND BORING REQUIREMENTS.

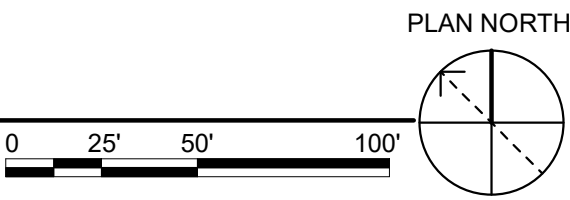


F16 POWER RISER DIAGRAM
NTS



B16 TELECOM RISER DIAGRAM
NTS

A1 ELECTRICAL SITE PLAN
1" = 20'-0"



TYNDALL AIR FORCE BASE, FLORIDA
CONSTRUCT NEW CAR WASH FACILITY, B928
FY 2020, PN XLWU198403
ELECTRICAL SITE PLAN

SHEET ID
ES101

RTA DB RFP