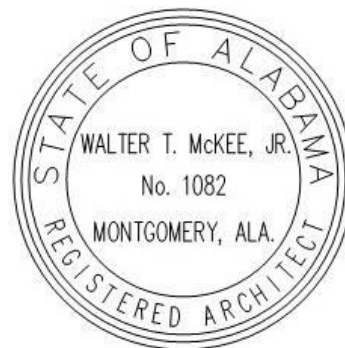


**Addendum No. 2**  
**Date: November 3, 2022**



Project:

**Classroom Addition for  
Union Hill School for the  
Morgan County Schools  
Somerville, Alabama**

**MCKEE PROJECT NO. 22.134**  
**ALABAMA DIVISION OF CONSTRUCTION MANAGEMENT NO. 2022222**

The following changes and/or substitutions to the plans and specifications are hereby made a part of same and are incorporated in full force as part of the contract.

Bidders shall acknowledge receipt of this Addendum in writing on his Proposal Form.

**A2.1 GENERAL MODIFICATIONS:**

- A. Refer to attached **Table of Contents (Revised 11.3.22)**, herein.
- B. Refer to attached **Contractor Completion Time Form (Revised 10.19.22)**, herein. *This form MUST be submitted in the Contractor's sealed Bid Proposal.*
- C. Refer to attached **Special Instructions to Bidders (Revised 11.3.22)**, herein.
- D. Refer to the attached **Non-Mandatory Pre-Bid Meeting Sign-In Sheet, dated 10.26.22**, herein.

**A2.2 SPECIFICATION MODIFICATIONS:**

- A. Refer to attached **Section 08700 Finish Hardware (Revised 11.3.22)**, herein.
- B. Refer to attached **Section 09680 Carpet**, herein.
- C. Refer to **Section 15700, Heating, Ventilating and Air Conditioning, Part 14 Split System Heat Pump Units, Paragraph 14.1 General: Part 16 Split System Cassette Type Heat Pump (CCHP) 17.2, attached letter dated 11.2.22 from Zgouvas, Eiring & Associates Consulting Engineers, Inc., herein.**

- D. Refer to **Section 16100 Electrical**; Replace 2.44 - A with the following:

**2.44 FIRE ALARM SYSTEM (ADDRESSABLE)**

- A. General: The contractor shall furnish and install a complete power limited automatic and manual fire alarm system, as specified herein and indicated on the drawings. The system shall include a central control panel, power supply, signal initiating devices, audible and visual alarm devices, provisions for connection of remote monitoring, a wiring system, and all necessary devices required to provide a complete operating system. The system shall comply with the applicable provisions of the National Fire Protection Association Standard Number 72 and meet all requirements of the local authorities having jurisdiction. The Underwriter's Laboratories, Incorporated, or approved by the Factory Mutual Laboratories shall list all equipment and devices. **To establish the type and quality of system desired, the equipment specified is that of FCI Company. Fire alarm equipment for this project shall be UL listed as compatible with the existing FCI fire alarm system.** No deviation will be considered unless submittals are received and approved in writing, not less than ten days prior to bid date.

**A2.3 DRAWING MODIFICATIONS:**

- A. See the attached Revised Drawings as follows:
  - 1. Sheet(s) **A6.1, and A8.3 (Revised 10.31.22)**, herein.
  - 2. Sheets **E4.1 (Revised 11.3.22)**, herein.

**END OF ADDENDUM**

## TABLE OF CONTENTS

---

# Classroom Addition

for  
**Union Hill School**  
Somerville, Alabama  
for the  
**Morgan County Board of Education**

**MCKEE PROJECT NO. 22.134**

### **BIDDING REQUIREMENTS**

- Advertisement For Bids
- Request For Information (McKee Form)
- Prior Approval/Substitution Request Form (McKee Form)
- Proposal Form (DCM Form C-3, August 2021)
- Accounting of Sales Tax (DCM Form C-3A, August 2021), Attachment to DCM Form C-3
- Form Of Bid Bond (DCM Form C-4, August 2021)
- Instructions To Bidders (DCM Form C-2, August 2021)
- Special Instructions To Bidders (McKee Form July 2020)

### **CONTRACT FORMS**

- Construction Contract (DCM Form C-5, August 2021)
- State of Alabama Department of Finance, Construction Management Division - Administrative Code 355-16-1 Collection of User Fees
- State of Alabama Department of Finance, Real Property Management, Division of Construction Management Permit Fee & Permit Re-Inspection Fee Calculation Worksheet (Revised August 2021)
- State Of Alabama Department of Revenue "Notice" regarding Tax Guidance for Contractors, Subcontractors and Alabama Governmental Entities Regarding Construction related contracts including Application for Sales and Use Tax Certificate of Exemption Form (Form ST:EXC-01 dated 8/18).
- Contractor's Statement of Responsibility for Construction of Tornado Storm Shelter (Hurricane Shelter where Applicable) (For All New K-12 Public Schools), (DCM Form C-17, August 2021)
- State of Alabama Disclosure Statement Form, Required by Article 3B of Title 41, Code of Alabama 1975 (Revised 09/2013) with Information and Instructions regarding Relationships Between Contractor/Grantees and Public Officials/Employees.
- State of Alabama E-Verify Memorandum of Understanding Instructions (Revised August 2021) *with* ABC Bulletin (May 29, 2012) *and* Revised Alabama Immigration Law Guidance for School Boards (Revised May 2012).
- Act 2009-657 Requiring Certification Of Fire Alarm Contractors (ABC Memorandum January 19, 2021)
- State Of Alabama Department Of Insurance – Application For State Fire Marshal's Certified Fire Alarm Contractor Permit

- Performance Bond (DCM Form C-6, August 2021)
- Payment Bond (ABC Form C-7, August 2021)

## **GENERAL CONDITIONS**

- General Conditions of the Contract (DCM Form C-8, August 2021)
- Instructions for Contractor's Insurance Company (Article 37 of DCM Form C-8, August 2021)
- Supplement to General Conditions of the Contract (McKee Form August 2020)
- Special Conditions of the Contract (Project Manager Form)
- Application and Certificate for Payment (DCM Form C-10, Revised October 2021)
- Schedule Of Values, (DCM Form C-10SOV, Revised October 2021) Attachment to DCM Form C-10
- Inventory Of Stored Materials, (DCM Form C-10SM, Revised October 2021) Attachment to DCM Form C-10
- Pre-Construction Conference Checklist (DCM Form B-8, November 2021)
- Progress Schedule and Report (DCM Form C-11, August 2021)
- Project Data Form (DCM Form B-9, August 2021)
- Statement Of Field Observations (DCM Form B-10, August 2021)
- Change Order Checklist, (DCM Form B-12, August 2021) For Use With DCM Form C-12
- Contract Change Order (DCM Form C-12 (fully locally-funded K-12 Schools), August 2021)
- Change Order Justification (DCM Form B-11, August 2021) Attachment to DCM Form C-12
- Certification Of Structural Observations (For All New K-12 Public Schools with Tornado Storm Shelters), (DCM Form B-14, Revised August 2021) Attachment to DCM Form C-13.
- Final Payment Checklist (DCM Form B-13, August 2021)
- Certificate of Substantial Completion (DCM Form C-13, August 2021)
- Form of Advertisement for Completion (DCM Form C-14, August 2021)
- Contractor's Affidavit of Payment of Debts and Claims (DCM Form C-18, August 2021)
- Contractor's Affidavit of Release of Liens (DCM Form C-19, August 2021)
- Consent of Surety to Final Payment (DCM Form C-20, August 2021)
- Detail Of Project Sign (DCM Form C-15, August 2021)
- Detail Of Plaque (ABC Form C-16, August 2001)
- General Contractor's Roofing Guarantee (DCM Form C-9, August 2021)

## **TECHNICAL SPECIFICATIONS**

### **DIVISION 01      GENERAL REQUIREMENTS**

- 01010              Scope of Work
- 01011              Contingency Allowances
- 01250              Contract Modification Procedures
- 01290              Payment Procedures
- 01315              Project Management Communications (Project Manager)

Classroom Addition for  
Union Hill School  
Somerville, Alabama for the  
Morgan County Board of Education

TABLE OF CONTENTS  
Page 2 of 5  
Revised 11.3.22

01320	Construction Progress Documentation
01322	Photographic Documentation
01330	Submittal Requirements
01500	Temporary Facilities and Controls
01600	Product Requirements
01700	Execution Requirements
01770	Closeout Procedures
01781	Project Record Documents
01782	Operation and Maintenance Data
01820	Demonstration and Training

**DIVISION 02 SITE WORK**

02070	Demolition
02100	Site Preparation
02200	Earthwork
02282	Termite Control
02513	Asphaltic Concrete Paving
02514	Portland Cement and Concrete Paving
02660	Water Distribution System
02730	Sanitary Sewers
02810	Sodding and Topsoil
02830	Temporary Chain Link Fencing & Gates
02846	Site Graphics

**DIVISION 03 CONCRETE**

03310	Cast-In-Place Concrete
-------	------------------------

**DIVISION 04 MASONRY**

04200	Unit Masonry
04400	Cast Stone

**DIVISION 05 METAL**

05120	Structural Steel
05310	Steel Decking
05400	Cold Formed Metal Trusses
05500	Miscellaneous Steel and Metal Fabrications
05510	Metal Stairs
05515	Ladders

05540 Metal Studs

**DIVISION 06 CARPENTRY**

06100 Rough Carpentry

**DIVISION 07 MOISTURE PROTECTION**

07115 Bituminous Damp-proofing

07120 Waterproofing

07200 Insulation

07220 Fire/Smoke Stop Insulation

07410 Preformed Metal Roofing

07510 Roof Insulation

07600 Flashing and Sheet Metal

07900 Joint Sealers

**DIVISION 08 DOORS, WINDOWS AND GLASS**

08100 Steel Doors and Frames

08211 Wood Doors

08305 Ceiling Access Doors

08349 Tornado Resistant Opening Systems

08410 Aluminum Storefronts

08520 Fire Rated Aluminum Windows

08565 Aluminum Windows (FEMA)

08700 Finish Hardware

08800 Glazing

**DIVISION 09 FINISHES**

09250 Gypsum Drywall

09301 Porcelain Tile

09510 Acoustical Ceilings

09650 Rubber Base, Stair Tread, Riser and Stinger

09651 Luxury Vinyl Tile (LVT)

09680 Carpet

09900 Painting

**DIVISION 10 SPECIALTIES**

10100 Markable Boards and Tack Boards

10160 Toilet Partitions

Classroom Addition for  
Union Hill School  
Somerville, Alabama for the  
Morgan County Board of Education

MCKEE PROJECT NO. 22.134

TABLE OF CONTENTS  
Page 4 of 5  
Revised 11.3.22

November 2021

10200	Louvers
10410	Identifying Devices
10440	Fire Extinguishers, Cabinets and Accessories
10670	Metal Shelving
10800	Toilet Accessories

**DIVISION 11 EQUIPMENT**

NOT APPLICABLE

**DIVISION 12 FURNISHINGS**

12304	Laminate Clad Casework
12366	Quartz Surfacing
12500	Window Treatments

**DIVISION 13 SPECIAL CONSTRUCTION**

13010	Asbestos Removal
13670	Extruded Aluminum Walkway Cover

**DIVISION 14 CONVEYING SYSTEM**

14240	Hydraulic Elevator
-------	--------------------

**DIVISION 15 MECHANICAL**

15010	General Mechanical Provisions
15400	Plumbing
15500	Sprinkler System
15700	Heating, Ventilating and Air Conditioning

**DIVISION 16 ELECTRICAL**

16100	Electrical
16715	Data / Telecommunications System

**END OF TABLE OF CONTENTS**

**CONTRACTOR COMPLETION TIME FORM**

This Form **MUST** be submitted with the sealed Proposal.

**Classroom Addition**  
for  
**Union Hill School**  
Somerville, Alabama  
for the  
**Morgan County Board of Education**  
**MCKEE PROJECT NO. 22.134**

**Legal Name of Bidder**

---

**Mailing Address**

---

Per Section 01010, Scope of Work, the General Contractor **MUST** state his/her completion time on their Bid Proposal Form. The Contractor's Completion Time will be taken into consideration for award of the construction contract.

**The General Contractor MUST use this Completion Time Form to state his/her completion time. This Form MUST be submitted with the sealed Proposal.**

**COMPLETION TIME:**

The Contractor **MUST** stipulate the durations for the completion of Phase 1 and Phase 2 in order to eliminate potential escalation costs in the bid that are due to the current uncertainty in the ability to procure materials in a timely manner. The completion time **MUST** include a 3 week period to allow for relocation of students/faculty and Owner salvage at the existing classroom building that is scheduled to be abated/demolished during the Phase 2 operations.

**PHASE 1**

All work shall be completed in **Calendar days** from Notice to Proceed issued by the Architect.

**PHASE 2**

All work shall be completed in **Calendar days** from Notice to Proceed issued by the Architect.

**Legal Signature of Bidder**

---



## SPECIAL INSTRUCTIONS TO BIDDERS

### 1.1 INTENT OF INSTRUCTIONS

- A. The Special Instructions to Bidders are intended to amplify the abbreviated Advertisement and to give other details which shall allow interested parties to prepare bids which accurately reflect the scope of the Work. The Special Instructions to Bidders are meant to be viewed as a complement to the general Instructions to Bidders found in the Project Manual. Should any discrepancy or ambiguity be noted, the Special Instructions to Bidders shall defer to the general Instructions to Bidders.

### 1.2 EXPLANATION AND INTERPRETATION

- A. Should any Bidder or subcontractor find any ambiguity, discrepancy, omission, or error in the Drawings and Project Manual, or insufficient information to provide a complete job, or be in doubt as to the intent and meaning thereof, he should at once report such in writing to Architect and request clarification prior to bidding.
- B. Clarification shall be made only by written Addenda during the bid period and sent to all perspective Bidders. The Architect and Consultants shall not be responsible for verbal answers regarding intent or meaning of the Contract Documents, or for any verbal instructions, by whomsoever made, prior to the award of the Contract.
- C. Additionally, all designed systems and/or assemblies are to be proposed and bid as complete assemblies or operational systems. Drawings are indicating intent and not attempting to fully obtain or detail required work.

### 1.3 BIDDER REQUIREMENTS

- A. **All Bidders must honor their bid proposals for a period of 90 calendar days from date of bid opening.**
- B. **The Contractor MUST Field Verify all existing conditions prior to submitting bid proposal.**
- C. **The Apparent Low Bidder AND Apparent Second Lowest Bidder** must submit to the **Architect** a list of the principal Subcontractors, suppliers, and fabricators he plans to use for each category of work. The list of Subcontractors must be received by the Architect within 24 hours following the Bid Opening (email to: [rawlinsonk@mckeeassoc.com](mailto:rawlinsonk@mckeeassoc.com)). Once the successful bidder has obtained approval from the Owner, no changes in Subcontractors shall be made without the express, written consent of the Owner. Contractor shall request consent in writing from the Owner and Architect and provide specific and reasonable explanation as to the necessity of said change. Should said change be approved by the Owner, the Contractor must submit the desired replacement Subcontractor to the Architect and obtain written approval of the Subcontractor.

### 1.4 OPENING OF PROPOSALS

- A. The Owner shall, according to applicable laws and regulations pertaining to bid openings, receive and review all Proposals submitted, according to the method selected below:
  - 1. Proposals shall be opened and read publicly at the time and place indicated in the Advertisement.
  - 2. Proposals may be rejected if they contain any omissions, alterations of forms, additions not called for, conditional bids, alternate bids unless called for, incomplete bids, erasures, or irregularities of any kind. Proposals in which the unit or lump sum prices bid are obviously unbalanced may be rejected. Additions to or deductions from the Bid amount may be written on the outside of the sealed bid, or by letter enclosed in the sealed bid envelope.

### 1.5 DETERMINATION of LOW BIDDER by USE of ALTERNATES

- A. The Awarding Authority may request alternate bid prices (alternates) to facilitate either reducing the base bid to an amount within the funds available for the project or adding items to the base

bid within the funds available for the project. Alternates, if any, are listed in the Proposal Form in the order in which they shall cumulatively deduct from or add to the base bid for determining the lowest bidder.

- B. If alternates are included in the Proposal Form, the Awarding Authority shall determine the dollar amount of funds available and immediately prior to the opening of bids shall announce publicly the funds available for the project. The dollar amount of such funds shall be **used to determine the lowest bidder** as provided herein below, notwithstanding that the actual funds available for the project may subsequently be determined to be more or less than the expected funds available as determined immediately prior to the time of the opening of bids.
- C. **If additional funds become available after the bid opening, the Owner may at his option elect to award to the lowest base bid bidder a contract based on the Contractors base bid amount and additional Alternates.**
- D. If the base bid of the lowest bidder **exceeds** the funds available and alternate bid prices will reduce the base bids to an amount that is **within** the funds available, the lowest bidder will be determined by considering, in order, the fewest number of the alternates that produces a price within the funds available.
- E. If the base bid of the lowest bidder is within the funds available and alternate bid prices will permit adding items to the base bid, the lowest bidder will be determined by considering, in order, the greatest number of the alternates that produces a price within the funds available.
- F. After the lowest bidder has been determined as set forth above, the Awarding Authority may award that bidder any combination of alternates, provided said bidder is also the low bidder when only the Base Bid and such combination of alternates are considered.

#### **1.6 AWARD OF CONTRACT**

- A. The Bidder to whom the award is made shall be notified by letter to the address shown on his Proposal at the earliest possible date. At such time, at the option of the Owner, additional information such as a complete financial statement may be required from the successful Bidder.

#### **1.7 EXECUTION OF CONTRACT**

- A. The Contract shall be signed by the successful Bidder, in the number of counterparts provided in the Contract Agreement and returned to the Owner with satisfactory Contract Bonds within ten (10) days after the date of Notice of Award.

#### **1.8 PERFORMANCE BOND AND PAYMENT BOND**

- A. The intent of the Performance Bond is to ensure the faithful performance of each and every condition, stipulation, and requirements of the Contract and to indemnify and save harmless the Owner, Architect, and Consultants from any and all damages, either directly or indirectly (arising out of any failure to perform same). The successful Bidder to whom the Contract is awarded shall furnish at his expense an acceptable Performance Bond in an amount equal to one hundred percent (100%) of the Contract Price of the Contract as awarded. Said Bond shall be made on the approved Bond form, shall be furnished by a surety company duly authorized and qualified to make such bonds in the State of Alabama, shall be countersigned by an authorized agent resident in the State who is qualified for the execution of such instruments, and shall have attached thereto power of attorney of the signing official. In case of default on the part of the Contractor, all expenses incident to ascertaining and collecting losses suffered by the Owner under the Bond, the direct costs of administration, architectural, engineering, and legal services, shall lie against the Contract Bond for Performance of the Work.
- B. In addition thereto, the successful Bidder to whom the Contract is awarded shall furnish at his expense a Payment Bond with good and sufficient surety payable to the Owner in an amount not less than one hundred percent (100%) of the Contract Price, with the obligation that the Contractor shall promptly make payment to all persons furnishing him or them with labor, material, feedstuffs, or supplies for or in prosecution of the Work provided for in the Contract and for the payment or reasonable attorneys' fees, incurred by successful claimants or plaintiffs in suits on said Bond.

## **1.9 APPROVAL OF CONTRACT**

- A. No Contract is binding upon the Owner until it has been executed by the Owner and the successful Bidder and copies delivered.

## **1.10 CAD FILES**

- A. Digital Unlocked Project CAD Files may be requested by emailing the email address on the Request for Information (RFI) Form.

## **1.11 LIST OF SUBCONTRACTORS**

- A. **The Apparent Low Bidder AND Apparent Second Lowest Bidder** must submit to the Architect a list of the principal Subcontractors, suppliers, and fabricators he plans to use for each category of work. The list of Subcontractors must be received by the Architect within twenty-four hours following the Bid Opening. Email to [rawlinsonk@mckeeassoc.com](mailto:rawlinsonk@mckeeassoc.com). Once the successful bidder has obtained approval from the Owner, no changes in Subcontractors shall be made without the express, written consent of the Owner.

## 1.12 LIST OF SUBCONTRACTORS SUBMITTAL FORM

Email this form in its entirety to contact listed below.

The **Apparent Low Bidder** AND **Apparent Second Lowest Bidder** must submit to the Architect a list of the principal Subcontractors, suppliers, and fabricators he plans to use for each category of work. The list of Subcontractors must be received by the Architect within twenty-four hours following the Bid Opening.

To: McKee & Associates, Architects

Kayla Rawlinson

[rawlinsonk@mckeeassoc.com](mailto:rawlinsonk@mckeeassoc.com)

*Email*

From: \_\_\_\_\_

*Company*

*Name*

*Email*

Project Name: \_\_\_\_\_

*Phone Number*

Project Number: \_\_\_\_\_

Issue Date: \_\_\_\_\_

Bid Date: \_\_\_\_\_

Category of Work	Name of Sub to Perform Work	Name of Supplier

**END OF SECTION**

Classroom Addition for  
Union Hill School  
Somerville, Alabama for the  
Morgan County Board of Education

SPECIAL INSTRUCTIONS TO BIDDERS

PAGE-4

Revised 11.3.22



McKee and Associates  
Architecture and Interior Design

## PRE-BID CONFERENCE: UNION HILL SCHOOL CLASSROOM ADDITION

DATE: 10/26/22  
LOCATION: Union Hill School (2221 Union Hill Road, Somerville, Alabama 35670)  
TIME: 10:00 a.m.

Name	Organization	Contact Number
1. MATTHEW DANNER	VOLKERT, INC.	256-652-3170
2. KERICK WHISENANT	LIMESTONE BUILDING GROUP	256-214-1571
3. Hunter Mitchell	Brad Slater Construction	931-766-5151
4. Jason Price	Dominguez	256-223-6448
5. Tracie Turrentine	MCS	256-758-1478
6. Kevin Humphries	MLRBE	256-309-2106
7. Brandon Smith	Terracon	256-620-6220
8. Robert Butler	MCS	256-309-2101
9. Hemi Smith	MCS	256-612-1441
10. Oscar Garcia	Terracon	256-617-1885
11. Victor Hunt	McKee	334-532-0774
12. RICHARD CRAFT	CRAFT & ASSOC	256-739-2452
13.		
14.		

## SECTION 08700 - FINISH HARDWARE

### PART 1 - GENERAL

#### 1.1 RELATED DOCUMENTS

- A. Drawings and general provisions of Contract including General and Supplementary Conditions and Division 1 Specification Sections apply to this Section.

#### 1.2 SUMMARY

- A. This Section includes items known commercially as finish or door hardware that are required for swing, sliding, and folding doors, except special types of unique hardware specified in the same sections as the doors and door frames on which they are installed.
- B. This Section includes the following:
  - 1. Hinges.
  - 2. Key control system.
  - 3. Lock cylinders and keys.
  - 4. Lock and latch sets.
  - 5. Bolts.
  - 6. Exit devices.
  - 7. Push/pull units.
  - 8. Closers.
  - 9. Overhead holders.
  - 10. Miscellaneous door control devices.
  - 11. Door trim units.
  - 12. Protection plates.
  - 13. Weather-stripping for exterior doors.
  - 14. Sound stripping for interior doors.
  - 15. Astragals or meeting seals on pairs of doors.
  - 16. Thresholds.
- C. Related Sections: The following Sections contain requirements that relate to this Section:
  - 1. Division 8 Section "Standard Steel Doors and Frames" for silencers integral with hollow metal frames.
  - 2. Division 8 Section "Flush Wood Doors" for factory pre-fitting and factory pre-machining of doors for door hardware.
  - 3. Division 8 Section "Aluminum Entrances and Storefronts" for aluminum entrance door hardware, except cylinders.

#### 1.3 HARDWARE ALLOWANCE

- A. Allowance of \$1,750.00 for Certified AHC (Architectural Hardware Consultant) & FDAI (Fire Door Assembly Inspector – document of certification from DHI must be provided) to visit job site upon substantial completion as directed by Architect. A written report will be required for the Owner, Architect, and Contractor

#### 1.4 QUALITY ASSURANCE

- A. Door hardware supplier's responsibilities shall be as follows:
  - 1. Submittals: Submit through Contractor required product data, final hardware schedule;



separate keying schedule, and samples as specified in this Section, unless otherwise indicated.

2. **Hardware Review Meeting:** Hardware Supplier shall attend a scheduled “Hardware Review Meeting” with the Contractor, Owner and Architect representative. All Hardware products, hardware installation locations, finishes, color selections, ratings and keying is to be reviewed and discussed. The Hardware Supplier understands the Hardware Submittal is not deemed “Fully Approved” until the Owner has completed their review and given “Approval”.
  3. **Construction Schedule:** Inform Contractor promptly of estimated times and dates that will be required to process submittals, to furnish templates, to deliver hardware, and to perform other work associated with furnishing door hardware for purposes of including this data in construction schedule. Comply with this schedule.
  4. **Coordination and Templates:** Assist Contractor as required to coordinate hardware with other work in respect to both fabrication and installation. Furnish Contractor with templates and deliver hardware to proper locations.
  5. **Product Handling:** Package, identify, deliver, and inventory door hardware specified in this Section.
  6. **Discrepancies:** Based on requirements indicated in Contract Documents in effect at time of door hardware selection, furnish types, finishes, and quantities of door hardware, including fasteners, and Owner's maintenance tools required to comply with specified requirements and as needed to install and maintain hardware. Furnish or replace any items of door hardware resulting from shortages and incorrect items at no cost to the Owner or Contractor. Obtain signed receipts from Contractor for all delivered materials.
- B. Contractor's responsibilities shall be as follows:
1. **Submittals:** Coordinate and process submittals for door hardware in same manner as submittals for other work.
  2. **Hardware Review Meeting:** Contractor is to schedule and attend a “Hardware Review Meeting” with the Owner, Hardware Supplier and Architect Representative. All Hardware products, hardware installation locations, finishes, color selections, ratings and keying is to be reviewed and discussed. The Contractor understands the Hardware Submittal is not deemed “Fully Approved” until the Owner has completed their review and given “Approval”.
  3. **Construction Schedule:** Cooperate with door hardware supplier in establishing scheduled dates for submittals and delivery of templates and door hardware. Incorporate in construction schedule the times and dates related to furnishing hardware by door hardware supplier.
  4. **Coordination:** Coordinate door hardware with other Work. Furnish hardware supplier or manufacturer with shop drawings of other work where required or requested. Verify completeness and suitability of hardware with supplier. Coordinate all wiring, raceways, accesses and final connections to all electronic devices and components per manufacturer requirements for a fully functioning system.
  5. **Product Handling:** Provide secure lock-up for hardware delivered to the site. Inventory hardware jointly with representative of hardware supplier and issue signed receipts for all delivered materials.
  6. **Installation Information:** The general types and approximate quantities of hardware required for this Project are indicated at the end of this Section in order to establish Contractor's costs for installation and other work not included in allowance.
  7. No adjustments in Contract sum will be made for costs other than those covered by the allowances for subsequent increases or decreases in quantity of one or more hardware types that do not exceed 5 percent.

## **1.5 SUBMITTALS**

- A. **General:** Submit the following in accordance with Conditions of Contract and Division 1 Specification sections.

- B. Product data including manufacturers' technical product data for each item of door hardware, installation instructions, maintenance of operating parts and finish, and other information necessary to show compliance with requirements.
- C. Final hardware schedule coordinated with doors, frames, and related work to ensure proper size, thickness, hand, function, and finish of door hardware.
  - 1. Upon return of the reviewed finish hardware schedule, arrange for a meeting with the Owner and representatives of Architect. A keying schedule will be established and submitted to the Architect and Owner. After review, the keying schedule will be returned to representatives of Finish Hardware Supplier so that permanent cylinders and keys can be prepared on a timely basis.

## **1.6 QUALITY ASSURANCE**

- A. Substitutions: All substitution requests must be submitted before bidding and within the procedures and time frame as outlined in Division 1, General Requirements. Approval of products is at the discretion of the architect and his hardware consultant.
- B. Single Source Responsibility: Obtain each type of hardware (latch and lock sets, hinges, closers, etc.) from a single manufacturer.
- C. Supplier Qualifications: A recognized architectural door hardware supplier, with warehousing facilities in the Project's vicinity, that has a record of successful in-service performance for a minimum of 10 years, for supplying door hardware similar in quantity, type, and quality to that indicated for this Project and that employs an experienced " Certified "architectural hardware consultant (AHC)" as recognized by the Door and hardware Institute (DHI). All submittals shall be signed by an AHC who is available to Owner, Architect, and Contractor, at reasonable times during the course of the Work, for consultation.
- D. Fire-Rated Openings: Provide door hardware for fire-rated openings that complies with NFPA Standard No. 80 and requirements of authorities having jurisdiction. Provide only items of door hardware that are listed and are identical to products tested by UL, Warnock Hersey, FM, or other testing and inspecting organization acceptable to authorities having jurisdiction for use on types and sizes of doors indicated in compliance with requirements of fire-rated door and door frame labels.

## **1.7 PRODUCT HANDLING**

- A. Tag each item or package separately with identification related to final hardware schedule, and include basic installation instructions with each item or package.
- B. Packaging of door hardware is responsibility of supplier. As material is received by hardware supplier from various manufacturers, sort and repackage in containers clearly marked with appropriate hardware set number to match set numbers of approved hardware schedule. Two or more identical sets may be packed in same container.
- C. Inventory door hardware jointly with representatives of hardware supplier and hardware installer until each is satisfied that count is correct.
- D. Deliver individually packaged door hardware items promptly to place of installation (shop or Project site).
- E. Provide secure lock-up for door hardware delivered to the Project, but not yet installed. Control handling and installation of hardware items that are not immediately replaceable so that completion of the Work will not be delayed by hardware losses both before and after installation.

## **1.8 MAINTENANCE**

- A. Maintenance Tools and Instructions: Furnish a complete set of specialized tools and maintenance instructions as needed for Owner's continued adjustment, maintenance, and removal and replacement of door hardware.



## **PART 2 - PRODUCTS**

### **2.1 HINGES**

#### **A. MANUFACTURERES**

1. Ives
2. Hager
3. Lawrence

#### **B. MATERIAL:**

1. Provide only template produced units.
2. Provide Phillips flat-head or machine screws for installation of units, except furnish Phillips flat-head wood screws for installation of units into wood. Finish screw heads to match surface of hinges or pivots.
3. Hinge pins, except as noted, are to be provided as follows:
  - a. Steel Hinges: Steel pins
  - b. Non-ferrous Hinges: Stainless steel pins
  - c. Exterior Doors: Use Non-Removable Pins
  - d. Interior Doors: Non-rising pins
  - e. Electric Hinges: Non-removable pins
4. Tips shall be flat button and matching plug, finished to match leaves.
5. Provide number of hinges indicated but not less than three (3) hinges for door leaf of 90" or less in height and one additional hinge for each 30" of additional height.
6. Provide ball bearing hinges of the type and weight suggested by the hinge manufacturer for each type of door application. 5 knuckle design, typically Ives 5BB1 or 5BB1HW. Size as specified in the door hardware sets.

### **2.2 CONTINUOUS GEAR HINGES**

#### **A. MANUFACTURERES**

1. Ives
2. Markar
3. Stanley

#### **B. MATERIAL:**

1. Provide aluminum geared continuous hinges conforming to ANSI/BHMA A156.26, Grade 1.
2. Provide aluminum geared continuous hinges, where specified in the hardware sets, fabricated from 6063-T6 aluminum
3. Provide split nylon bearings at each hinge knuckle for quiet, smooth, self-lubricating operation.
4. Provide hinges capable of supporting door weights up to 450 pounds, and successfully tested for 1,500,000 cycles
5. On fire-rated doors, provide aluminum geared continuous hinges that are classified for use on rated doors by testing agency acceptable to authority having jurisdiction.
6. Install hinges with fasteners supplied by manufacturer.
7. Provide hinges 1 inch (25 mm) shorter in length than nominal height of door, unless otherwise noted or door details require shorter length and with symmetrical hole pattern.

### **2.3 LOCK CYLINERS AND KEYING:**

Classroom Addition for  
Union Hill School  
Somerville, Alabama for the  
Morgan County Board of Education

FINISH HARDWARE  
08700-4  
Revised 11.3.22

- A. Morgan County Schools utilizes an existing Keymark master key system. Cylinder cores are 7-pin, small format interchangeable core (SFIC). **All permanent cores for this project shall be owner provided.** The hardware scheduled in the hardware sets below, to be provided and installed by the general contractor, is to be compatible with the owner supplied cores.
- B. All locksets and exit devices shall be equipped with 7-pin SFIC interchangeable core housings. All new locks and exit device cylinder housings shall be provided with temporary brass construction cores. Provide 12 construction master keys and 2 construction control keys.
- C. The general contractor shall include in their base bid a hardware allowance as per Section 01210 - Allowances of this project manual as a contingency to cover the purchase of permanent keyed cores and permanent keys from the owner's designated supplier, as directed by owner. The Owner will pick up and deliver the permanent cores to the general contractor for installation. General contractor shall remove all construction cores and install all permanent cores with their forces once the project is declared Substantially Complete. Temporary construction cores shall be returned to the door hardware supplier.

## 2.4 **ACCESSORIES:**

Key Cabinet: Provide one surface wall mount key cabinet, Lund Deluxe 1200 series, two tag key system. Capacity shall be 150% of number keys required for the project. General contractor shall install key cabinet in location to be determined by the architect.

## 2.5 **LOCKSETS AND LATCHSETS**

### A. MANUFACTURERES

- 1. Schlage ND/L9000 Series, SPA/17A design
- 2. Falcon T Series, QG Design
- 3. Corbin CL3100 Series, PZD Design
- 4. Provide the series specified in the door hardware sets.

### B. MATERIAL

- 1. Locksets and latch-sets of all manufacturers must conform to the requirements of Sub paragraphs 2 and be approved by the Architect.
- 2. Cylindrical Lock Type
  - a. Locksets and latch sets must conform to ANSI A156.2 Series 4000, Operational Grade 1, and be UL Listed for 3 hour fire door.
  - b. Lever Trim: Solid cast levers without plastic inserts and wrought roses on both sides.
  - c. Provide locksets with separate anti-rotation thru-bolts, and no exposed screws.
  - d. Provide independently operating levers with two external return spring cassettes mounted under roses to prevent lever sag.
  - e. Provide locks with standard 2-3/4 inches (70 mm) backset with full 1/2 inch (19 mm) throw stainless steel mechanical anti-friction latchbolt. Provide proper latch throw for UL listing at pairs.
  - f. Provide standard ASA strikes unless extended lip strikes are necessary to protect trim.
  - g. Multi-Point Locksets for Tornado rated frames and doors shall meet ICC500-2020 requirements and be of same manufacturer as mechanical locksets.
  - h. Provide Schlage L9000 series mortise locksets where specified in the door hardware sets.

## 2.6 **EXIT DEVICES**

### A. MANUFACTURERES

Classroom Addition for  
Union Hill School  
Somerville, Alabama for the  
Morgan County Board of Education

FINISH HARDWARE  
08700-5  
**Revised 11.3.22**

1. Von Duprin 98 Series
2. Detex 10 Series
3. Falcon 25 Series

## B. MATERIAL

1. All exit devices shall be the products of one manufacturer for wood, hollow metal, aluminum and ICC500 Storm Shelter/Tornado doors.
2. Provide sex nuts and bolts for attachment of surface applied items to doors.
3. Devices shall be UL listed. Devices for fire rated openings shall bear factory installed UL markings that indicate approval for fire rated openings.
4. All exit devices shall be touch-pad type design.
5. All exit devices shall comply with ANSI A156.3, Grade 1.
6. Exit device lever trim shall be equal to Von Duprin break away vandal resistant #996L.
7. All exit devices shall be equipped with flush end caps.
8. All exit devices shall be equipped with guarded (deadlocking) latch bolts.
9. Where specified in the door hardware sets, provide Von Duprin "QM" (Quiet Mechanical) option with damper controlled latch bolts and lever return for noise reduction.
10. Security Indicators for "Keyed Cylinder Dogging" - Provide Von Duprin "CDSI", dogging indicator provides an at-a-glance verification of the status of the door from inside of the room. Visible "LOCKED" and "UNLOCKED" indicators show whether the device is undogged or dogged.
11. Security Indicators for "-2SI-Classroom Exit Device Locking Lever Trim". The "-2SI" Security Indicator provides an at-a-glance verification of the LOCKED/UNLOCKED status of the door from inside of the room. Facility staff to be able to lock/unlock outside exit device lever trim from classroom side of door, avoiding corridor exposure.
12. All exit devices shall be provided with anti-microbial coated stainless steel touch bars. Plastic touch pads or plastic covered touch pads will not be accepted.
13. All exit devices are to be installed using through-bolts. All exit devices and exit device strikes shall be installed using manufacturer's supplied fasteners. Substitution of manufacturer's fasteners will not be allowed.
14. ICC500 rated exit devices are to be compatible with the specified Tornado-Resistant Assemblies specified in specification Section 083490.

## 2.7 CLOSERS

### A. MANUFACTURERES

1. LCN 4000/1461 series
2. Sargent 281 Series
3. Norton 9500
4. Provide the closer series specified in the door hardware sets.

### B. MATERIAL

1. Size of units: Except as otherwise specifically indicated, comply with the manufacturer's recommendations for size of door control unit, depending upon size of door, exposure to weather and anticipated frequency of use.

- a. Where parallel arms are indicated for closers, provide closer unit one size larger than recommended for use with standard arms.
  - b. Where manual closers are indicated for doors required to be accessible to the physically handicapped, provide adjustable units, ANSI opening force and delayed action closing.
2. Closers are to be fully hydraulic, rack and pinion action with high strength cast iron cylinders and one piece forged steel pistons. Closer Piston diameter for all closers at exterior doors shall be minimum 1½". Hydraulic regulation to be controlled by tamper-proof, non-critical screw valves, adjustable with a hex by tamper-proof, non-critical screw valves, adjustable with a hex wrench. Separate adjustments for back check, general speed, and latch speed. Where detailed in the door hardware sets, provide delayed action feature to delay closing up to one minute for maximum opening to approximately 75. Back check shall be properly located for protection of the door, frame and applied hardware.
  3. All door closers shall comply with ANSI A156.4 Grade 1 and meet the standards of ANSI A117.1 for barrier-free accessibility.
  4. All closers are to be through bolt mounted. All door closers are to be installed using manufacturer supplied fasteners. Substitution of manufacturers supplied fasteners is not permitted.
  5. All surface door closers are to be provided with required mounting brackets, mounting plates, drop plates, shims, spacers, arms, special templating, etc. as required for the specified closer and arm function, whether specified in the door hardware sets or not.

## **2.8 OVERHEAD STOPS AND HOLDERS**

### **A. MANUFACTURERES**

1. Glynn Johnson
2. Sargent
3. Rixson

### **B. MATERIAL**

1. Conform to ANSI A156.8 Grade 1.

## **2.9 PUSH/PULLS & PROTECTION PLATES**

### **A. MANUFACTURERES**

1. Ives
2. Trimco
3. Burns

### **B. MATERIAL**

1. Provide manufacturers standard exposed fasteners for installation, through bolted for matched pairs, but not of single units.
2. Provide 16 gauge minimum thickness for plates.
3. Where specified in the schedule, push/pulls shall have an antimicrobial coating.

## **2.10 THRESHOLDS, WEATHERSTRIPPING & GASKETING**

### **A. MANUFACTURERES**

1. Zero
2. National Guard
3. Pemko

### **B. MATERIAL**

1. Provide continuous weather-stripping at each edge of every exterior door leaf, except as otherwise indicated.
2. Provide type, size and profile shown as scheduled.
3. Provide non-corrosive fasteners as recommended by manufacturer for application indicated. Do not specify adhesive backed weather-strip or gasket material.
4. Where replaceable seal strips are scheduled, provide only those units where resilient or flexible seal strip is easily replaceable from stocks maintained by manufacturer.
5. Provide standard metal threshold unit of type, size and profile shown as scheduled.

## 2.11 FINISHES

A. Hardware finishes shall conform to ANSI and shall be as listed below for aluminum, FRP, hollow metal and wood doors:

B. Finishes Table:

Butt Hinges	Interior Doors: 652 Satin Chrome Plated Steel
Continuous Geared Aluminum Hinges	628 Clear Anodized Aluminum at wood and hollow metal doors. At Aluminum doors provide custom anodized aluminum finish or custom Kynar paint finish as required to match the specified frame/door finish.
Flush Bolts	626 Satin Chrome Plated
Locksets	626AM Satin Chrome Plated, w/anti-microbial coating
Pulls	630AM Satin Chrome Plated, w/anti-microbial coating
Exit Devices	626AM Satin Chrome Plated, with 630AM Satin Stainless Steel touch bars, w/anti-microbial coating. Pull trim to be 626 AM.
Door Closers	Hollow Metal and Wood Doors: 689 Powder Coat Aluminum. Aluminum doors provide custom color paint finish (LCN RAL) as required to match the specified frame/door finish. Submit color chart for approval.
Protective Plates	630 Satin Stainless Steel
Door Stops	626 Satin Chrome Plated
Offset Pulls	630AM Satin Chrome Plated, w/anti-microbial coating
Overhead Holders/Stops	630 Satin Stainless Steel
Thresholds	628, Clear anodized satin aluminum
Metal Retainer Weather Seals	628, Clear anodized satin aluminum
Adhesive Gasketing Weather and Smoke Seals	Dark Bronze or Black

## PART 3 - EXECUTION

### 3.1 INSTALLATION

A. Install each hardware item in compliance with manufacturer's instructions and recommendations. Where cutting and fitting is required to install hardware onto or into surfaces that are later to be painted or finished in another way, install each item completely and then remove and store in a secure place during the finish application. After completion of the finishes, reinstall each item.

1. Do not install surface mounted items until finishes have been completed on the substrate.

B. Conform to ANSI A117.1 for positioning requirements for the handicapped.

### 3.2 PROTECTION AND CLEANING

- A. After installation, clean metal surfaces on both interior and exterior of all mortar, paint and other contaminants. After cleaning, protect work against damage.

### 3.3 FINAL ADJUSTMENT

- A. Whenever hardware is installed more than one month prior to occupancy or acceptance, return during the week prior to acceptance or occupancy and make a final inspection and adjustment of all hardware items in such space or area.

### 3.4 SCHEDULE

HARDWARE SET: 01

DOOR NUMBER:

100B

120

123A

123D

EACH TO HAVE:

1	CONT. HINGE	224XY	IVE
1	PANIC HARDWARE	CDSI-98-NL-990NL-SNB	VON
1	RIM CYLINDER	80-159	SCH
1	MORTISE CYLINDER	80-132	SCH
2	PERMANENT IC CORE	AS REQUIRED	
1	SURFACE CLOSER	4111 SCUSH TBSRT	LCN
1	KICK PLATE	8400 10" X 2" LDW B-CS	IVE
1	RAIN DRIP	142	ZER
1	GASKETING	8144	ZER
1	DOOR SWEEP	8198	ZER
1	THRESHOLD	65A	ZER

HARDWARE SET: 02

DOOR NUMBER:

121

EACH TO HAVE:

1	CONT. HINGE	224XY	IVE
1	PANIC HARDWARE	98-NL-990NL-SNB	VON
1	RIM CYLINDER	80-159	SCH
1	PERMANENT IC CORE	AS REQUIRED	
1	SURFACE CLOSER	4111 SCUSH TBSRT	LCN
1	KICK PLATE	8400 10" X 2" LDW B-CS	IVE
1	RAIN DRIP	142	ZER
1	GASKETING	8144	ZER
1	DOOR SWEEP	8198	ZER
1	THRESHOLD	65A	ZER

HARDWARE SET: 03

DOOR NUMBER:

122

EACH TO HAVE:

1	CONT. HINGE	224XY	IVE
1	STOREROOM LOCK	ND80HD SPA 10-025 K510-066	SCH
1	PERMANENT IC CORE	AS REQUIRED	
1	SURFACE CLOSER	4111 SCUSH TBSRT	LCN
1	RAIN DRIP	142	ZER
1	GASKETING	8144	ZER
1	DOOR SWEEP	8198	ZER
1	THRESHOLD	65A	ZER

HARDWARE SET: 04

DOOR NUMBER:

110

EACH TO HAVE:

3	HINGE	5BB1 4.5 X 4.5	IVE
1	EXIT HARDWARE	98-L-NL	VON
1	SURFACE CLOSER	1461 SCUSH TBSRT	LCN
1	MOP PLATE	8400 6" X 1" LDW B-CS	IVE
1	GASKETING	188	ZER

HARDWARE SET: 05

DOOR NUMBER:

103B

104A

116B

117B

118A

119A

210A

211A

212B

213B

214A

215A

EACH TO HAVE:

3	HINGE	5BB1 4.5 X 4.5	IVE
1	CLASSROOM LOCK	ND70HD SPA 10-025 K510-066	SCH
1	PERMANENT IC CORE	AS REQUIRED	
1	MOP PLATE	8400 6" X 2" LDW B-CS	IVE
1	MOP PLATE	8400 6" X 1" LDW B-CS	IVE
1	WALL STOP	WS401/402CVX	IVE

HARDWARE SET: 06

DOOR NUMBER:

103

104

116

117

118

119

208

210

211

212

213

214

215

EACH TO HAVE:

3	HINGE	5BB1 4.5 X 4.5	IVE
1	CLASSROOM SECURITY LOCK W/ INSIDE INDICATOR ROSE	ND75HD SPA XN12-035 10-025 K510-066	SCH
2	PERMANENT IC CORE	AS REQUIRED	
1	MOP PLATE	8400 6" X 2" LDW B-CS	IVE
1	MOP PLATE	8400 6" X 1" LDW B-CS	IVE
1	WALL STOP	WS401/402CVX	IVE

HARDWARE SET: 07

DOOR NUMBER:

102

202

EACH TO HAVE:

3	HINGE	5BB1 4.5 X 4.5	IVE
1	OFFICE LOCK	ND53HD SPA 10-025 K510-066	SCH
1	PERMANENT IC CORE	AS REQUIRED	
1	SURFACE CLOSER	1461 RW/PA TBSRT	LCN
1	KICK PLATE	8400 10" X 2" LDW B-CS	IVE
1	WALL STOP	WS401/402CVX	IVE
3	SILENCERS	SR64	IVE

HARDWARE SET: 08

DOOR NUMBER:

4

5

EACH TO HAVE:

1	CONT. HINGE	224XY	IVE
1	PASSAGE SET	L9010	IVE
1	SURFACE CLOSER	4011 TBSRT	LCN
1	KICK PLATE	8400 10" X 2" LDW B-CS	IVE
1	MOP PLATE	8400 6" X 1" LDW B-CS	IVE
1	WALL STOP	WS401/402CVX	IVE
3	SILENCERS	SR64	IVE

HARDWARE SET: 09 (EXISTING FRAME/EXISTING DOOR)

DOOR NUMBER:

1

EACH TO HAVE:

1	PASSAGE SET	ND10S/L9010-TYPE AS REQ'D- HARDWARE SUPPLIER TO FIELD VERIFY FRAME/DOOR LOCK PREPARATION.	IVE
1	KICK PLATE	8400 10" X 2" LDW B-CS	IVE
1	WALL STOP	WS401/402CVX	IVE
3	SILENCERS	SR64	IVE

RE-USE ALL OTHER DOOR HARDWARE

HARDWARE SET: 10

DOOR NUMBER:

102A

103A

104B

208C

210B

216

EACH TO HAVE:

1	HINGE (TOP HINGE)	5BB1 4.5 X 4.5	IVE
2	SPRING HINGES	3SP1 4.5 X 4.5	IVE
1	STOREROOM LOCK	ND80HD SPA 10-025 K510-066	SCH
1	PERMANENT IC CORE	AS REQUIRED	
1	OH STOP	90S (OMIT AT DOOR 102A)	GLY
1	WALL STOP	WS401/402CVX (DOOR 102A)	IVE
1	GASKET SEAL	188S-BK	ZER

HARDWARE SET: 11

DOOR NUMBER:

101

114

204A

EACH TO HAVE:

3	HINGE	5BB1 4.5 X 4.5 NRP	IVE
1	STOREROOM LOCK	ND80HD SPA 10-025 K510-066	SCH
1	PERMANENT IC CORE	AS REQUIRED	
1	SURFACE CLOSER	1461 RW/PA TBSRT (OMIT @ DOOR 204A)	LCN
1	MOP PLATE	8400 6" X 1" LDW B-CS (OMIT @ DOOR 204A)	IVE
1	GASKETING	188S-BK (OMIT @ DOOR 204A)	ZER
1	AUTO DOOR BOTTOM	355AA (OMIT @ DOOR 204A)	ZER
1	THRESHOLD	545A	ZER



HARDWARE SET: 12

DOOR NUMBER:

116A

117A

209

212A

213A

EACH TO HAVE:

6	HINGE	5BB1 4.5 X 4.5 NRP	IVE
2	SURFACE BOLTS	454-12"	IVE
1	STOREROOM LOCK	ND80HD SPA 10-025 K510-066	SCH
1	PERMANENT IC CORE	AS REQUIRED	
1	OH STOP	90S SNB	GLY
1	SURFACE CLOSER	1461 RW/PA TBSRT	LCN
2	MOP PLATE	8400 6" X 1" LDW B-CS	IVE
1	GASKETING	188S-BK	ZER
2	AUTO DOOR BOTTOM	355AA	ZER
1	THRESHOLD	545A	ZER

HARDWARE SET: 13

DOOR NUMBER:

115

217

EACH TO HAVE:

3	HINGE	5BB1 4.5 X 4.5	IVE
1	FACULTY RESTROOM LOCKSET W/VISUAL OCCUPANCY INDICATOR	ND85HD SPA 10-025 K510-066	SCH
1	PERMANENT IC CORE	AS REQUIRED	
1	SURFACE CLOSER	1461 RW/PA TBSRT	LCN
1	KICK PLATE	8400 10" X 2" LDW B-CS	IVE
1	MOP PLATE	8400 6" X 1" LDW B-CS	IVE
1	WALL STOP	WS401/402CVX	IVE
3	SILENCERS	SR64	IVE

HARDWARE SET: 14

DOOR NUMBER:

106

108

109

201

204

206

208A

208B

EACH TO HAVE:

3	HINGE	5BB1 4.5 X 4.5	IVE
1	STOREROOM LOCK	ND80HD SPA 10-025 K510-066	SCH
1	PERMANENT IC CORE	AS REQUIRED	
1	SURFACE CLOSER	1461 RW/PA TBSRT(SCUSH ARM @ DOOR 208B)	LCN
1	KICK PLATE	8400 10" X 2" LDW B-CS	IVE
1	MOP PLATE	8400 6" X 1" LDW B-CS	IVE
1	WALL STOP	WS401/402CVX	IVE
3	SILENCERS	SR64	IVE

HARDWARE SET: 15

DOOR NUMBER:

2

6

EACH TO HAVE:

3	HINGE	5BB1 4.5 X 4.5	IVE
1	STOREROOM LOCK	ND80HD SPA 10-025 K510-066	SCH
1	PERMANENT IC CORE	AS REQUIRED	
1	SURFACE CLOSER	1461 RW/PA TBSRT	LCN
1	KICK PLATE	8400 10" X 2" LDW B-CS	IVE
1	MOP PLATE	8400 6" X 1" LDW B-CS	IVE
1	WALL STOP	WS401/402CVX	IVE
1	GASKETING	188S-BK	ZER

Classroom Addition for  
Union Hill School  
Somerville, Alabama for the  
Morgan County Board of Education

FINISH HARDWARE  
08700-12  
Revised 11.3.22

HARDWARE SET: 16 – NOT USED

HARDWARE SET: 17

DOOR NUMBER:

11 111

EACH TO HAVE:

2	CONTINUOUS HINGES	224XY	IVE
1	REMOVABLE MULLION, FACTORY PREPARED AND PRE- WIRED FOR ELECTRIC STRIKE, W/PLUG CONNECTORS	KR9854-6111-299-HAND	VON
1	PANIC HARDWARE	98-EO-F-990-EO-SNB	VON
1	PANIC HARDWARE W/ SECURITY INDICATOR PROVIDES AN AT-A-GLANCE VERIFICATION OF THE LOCKED/UNLOCKED STATUS OF EXIT DEVICE LEVER TRIM	98-NL-F-990NL-SNB	VON
1	RIM CYLINDERS	80-159	SCH
1	PERMANENT IC CORE	AS REQUIRED	
2	SURFACE CLOSERS	4111 EDA TBSRT	LCN
2	KICK PLATES	8400 10" X 2" LDW B-CS	IVE
1	GASKETING	188S-BK-PSA	ZER
1	MULLION SEAL	139N-PSA	ZER
2	MEETING EDGE SEALS	328AA	ZER
1	ELECTRIC STRIKE	6111-DS-VOLTAGE AS REQ'D	VON
1	STRIKE POWER SUPPLY	PS902	VON
1	CARD READER	PROVIDED BY ACCESS CONTROL INTEGRATOR	

HARDWARE SET: 18

DOOR NUMBER:

12

EACH TO HAVE:

3	HINGE	5BB1 4.5 X 4.5 NRP 630	IVE
1	RIM PANIC	22-NL-230DT-SNB-689	VON
1	RIM HOUSING W/CONSTRUCTION CORE	80-159	SCH
1	SURFACE CLOSER	1461 EDA TBSRT-689	LCN
1	WALL STOP	WS401/402CVX	IVE
1	THRESHOLD	654A	ZER
1	SWEEP	8192AA	ZER
1	WEATHER STRIP	8144S-BK	ZER

HARDWARE SET: TD-01

DOOR NUMBER:

100A

111A

112

113A

EACH TO HAVE:

2	CONTINUOUS GEAR HINGES	224XY	IVE
1	ICC500-EXIT DEVICE	WS-9827-EO-F-SNB	VON
1	ICC500-EXIT DEVICE	WS-9827-TL-F-377T-990DT-SNB	VON
2	LATCH GUARDS	WS-LGO	VON
1	RIM HOUSING	80-159	SCH
1	PERMANENT IC CORE	AS REQUIRED	
2	SURFACE CLOSER	4111 TBSRT	LCN
2	WALL STOP/HOLDER	WS445/WS449	IVE
1	GASKETING	188S-BK	ZER
2	MEETING EDGE SEALS	328AA	ZER

HARDWARE SET: AL-01 (CARD READER)

DOOR NUMBER:

100

113

EACH TO HAVE:

2	CONT. HINGE	112XY	IVE
1	REMOVABLE MULLION, FACTORY PREPARED AND PRE- WIRED FOR ELECTRIC STRIKE, W/PLUG CONNECTORS	KR4854-6111-299-HAND	VON
1	PANIC HARDWARE	LD-35A-EO-299	VON
1	PANIC HARDWARE W/ VISIBLE "LOCKED" AND "UNLOCKED" SECURITY INDICATOR	CDSI-35A-NL-OP	VON
1	RIM HOUSING	80-159	SCH
2	MORTISE CYLINDERS	80-132	SCH
3	PERMANENT IC CORES	AS REQUIRED	
1	90 DEG OFFSET LONG PULL	8190EZHD-18-A (CONCEALED MOUNT)	IVE
2	OH STOPS	100S	GLY
2	SURFACE CLOSERS	4021	LCN
2	DROP PLATES	4020-18G	LCN
1	MULLION SEAL	139N PSA	ZER
1	THRESHOLD	65A	ZER
1	WEATHER SEALS	PROVIDED BY ALUMINUM FRAME/DOOR SUPPLIER/MFG	ZER
1	ELECTRIC STRIKE	6111-DS-VOLT AS REQ'D	VON
1	STRIKE POWER SUPPLY	PS902	VON
1	CARD READER	PROVIDED BY ACCESS CONTROL INTEGRATOR	

COORDINATE ELECTRIFIED DOOR HARDWARE WITH ACCESS CONTROL INTEGRATOR AND ELECTRICAL.  
COORDINATE HARDWARE WITH ALUMINUM DOOR/FRAME MANUFACTURER/SUPPLIER.  
BALANCE OF HARDWARE BY ALUMINUM DOOR/FRAME MANUFACTURER/SUPPLIER.

HARDWARE SET: AL-02 (CARD READER)

DOOR NUMBER:

10

123B

123C

EACH TO HAVE:

1	CONT. HINGE	112XY	IVE
1	PANIC HARDWARE W/ VISIBLE "LOCKED" AND "UNLOCKED" SECURITY INDICATORS	CDSI-35A-NL-OP-388	VON
1	RIM HOUSING	80-159	SCH
1	MORTISE CYLINDER	80-132	SCH
2	PERMANENT IC COREs	AS REQUIRED	
1	90 DEG OFFSET PULL	8190EZHD 12" O	IVE
1	OH STOP	100S	GLY
1	SURFACE CLOSER	4021	LCN
1	DROP PLATE	4020-18G	LCN
1	THRESHOLD	65A	ZER
1	WEATHER SEALS	PROVIDED BY ALUMINUM FRAME/DOOR SUPPLIER/MFG	ZER
1	ELECTRIC STRIKE	6111-DS-VOLT AS REQ'D	VON
1	STRIKE POWER SUPPLY	PS902	VON
1	CARD READER	PROVIDED BY ACCESS CONTROL INTEGRATOR	

COORDINATE ELECTRIFIED DOOR HARDWARE WITH ACCESS CONTROL INTEGRATOR AND ELECTRICAL.  
COORDINATE HARDWARE WITH ALUMINUM DOOR/FRAME MANUFACTURER/SUPPLIER.  
BALANCE OF HARDWARE BY ALUMINUM DOOR/FRAME MANUFACTURER/SUPPLIER.

**END OF SECTION**

Classroom Addition for  
Union Hill School  
Somerville, Alabama for the  
Morgan County Board of Education

FINISH HARDWARE  
08700-15  
Revised 11.3.22

## **SECTION 09680 – CARPETING**

### **PART 1 – GENERAL**

#### **1.1 RELATED DOCUMENTS**

- A. Drawings and general provisions of Contract including General and Supplementary Conditions and Division 1 Specification Sections apply to work of this section.

#### **1.2 RELATED SECTIONS**

- A. Section 09650 – Rubber Base.

#### **1.3 DESCRIPTION OF WORK**

- A. The extent of each type of carpeting is indicated on the drawings, and by specifications, and is defined to include carpet and accessories.

#### **1.4 SUBMITTALS**

- A. Product Data: Submit manufacturer's product data for each type of carpet specified.
- B. Shop Drawings: Submit shop drawings indicating seam layout for approval by Architect.

#### **1.5 QUALITY ASSURANCE**

- A. Installer: Firm with not less than 5 years of carpeting experience, similar to work of this section.
- B. Manufacturer: Firm (Carpet Mill) with not less than 5 years of production experience with carpet similar to types specified in this section, and whose published product literature clearly indicates compliance of products with requirements of this section.
- C. General Standard: "Carpet Specifier's Handbook" by the Carpet and Rug Institute; comply with recommendations which can be reasonably applied to types of carpeting work required.
- D. Maintenance Materials: Deliver specified overrun (if any) and usable scraps of carpet to Owner's designated storage space, properly packaged (paper wrapped) and identified. Usable scraps are defined to include roll ends of less than 9'0" length, and pieces of more than 3 sq. ft. area and more than 8" wide. Dispose of smaller pieces.

#### **1.6 PRODUCT DELIVERY AND STORAGE**

- A. Deliver carpeting material in protective wrapping, and store inside, protected from weather, moisture and soiling.

#### **1.7 WARRANTY**

- A. Provide special project warranty, signed by the Contractor, Installer and Manufacturer (Carpet Mill), agreeing to repair or replace defective materials and workmanship of carpeting work during a 1 year warranty period from date of final acceptance of the project. Attach copies of product warranties.

### **PART 2 – PRODUCTS**

#### **2.1 MANUFACTURER**

- A. The following manufacturers' products have been used to establish minimum standards for materials, workmanship and function:
  - 1. Mohawk (Basis of Design)
  - 2. Milliken
  - 3. Mannington

#### **2.2 MATERIALS**

- A. Series: "Hyper Earth" – 12BY36; 12" x 36" carpet planks.
- B. Color: To be selected by Architect from Series color selections.

## **2.3 PERFORMANCE**

- A. Permanent Static Protection: Dissipates unwanted static electricity and effectively prevents static build-up in excess of 3.0 KV at 70° F, 20% relative humidity when tested under AATC-134-75.
- B. Flammability: DOC-FF-1-70 Pill Test passes. Floor Radiant Panel meets NFPA Class 1 when tested under ASTM E648 Glue Down. NBS Smoke Chamber NFPA-258 (450 or less) Flaming Mode.
- C. Construction Materials: 100% man-made materials for superior stability. Specifications are subject to change without notice when such changes do not alter product performance. Slight color variations may occur from dye lot to dye lot.

## **2.4 MATERIALS – MODULAR WALK OFFS**

- A. Series: “Durkan Moving Along Collection” – “Step By Step” MD009; 24” x 24” Modular Walk Off.
- B. Color: To be selected by Architect from Series color selections.
- D. Maintenance Materials: Deliver specified overrun (5 extra tiles) and usable scraps of carpet tiles to Owner's designated storage space, properly packaged (paper wrapped) and identified. Usable scraps are defined to include pieces of more than 3 sq. ft. area. Dispose of smaller pieces

## **2.5 CARPET ACCESSORIES**

- A. Wall Base: See Section 09650 – Rubber Base.
- B. Carpet Edge Guard, Metallic: Color as selected by Architect.
- C. Reducer Strip: Install vinyl reducer strip where carpet meets other finishes.
- D. Installation Adhesive: Water-resistant type as recommended by carpet or cushion manufacturer, and which complies with flammability requirements for installed carpet.
- E. Seaming Cement: Hot-melt seaming adhesive or similar product recommended by carpet manufacturer, for taping seams and buttering cut edges at backing to form secure seams and prevent pile loss at seams.
- F. Miscellaneous Materials: As recommended by manufacturers of carpet, cushions and other carpeting products; and selected by Installer to meet project circumstances and requirements.

# **PART 3 – EXECUTION**

## **3.1 PRE-INSTALLATION REQUIREMENTS**

- A. Installer must examine substrates for moisture content and other conditions under which carpeting is to be installed, including the temperature of the area that the carpet is to be installed in, and notify Contractor in writing of conditions detrimental to proper completion of the work. Do not proceed until satisfactory conditions have been met.
- B. Sequence carpeting with other work so far as to minimize the possibility of damage and soiling of carpet during remainder of construction period.

## **3.2 INSTALLATION- GENERAL**

- A. Comply with manufacturers' instructions and recommendations for seam locations and direction of carpet; maintain uniformity of direction and lay of pile. At doors, center seams under doors; do not place seams in traffic direction at doorways. Provide seam layout to Architect for approval before any work is performed.
- B. Extend carpet under open-bottomed obstructions and under removable flanges and furnishings, and into alcoves and closets of each space.
- C. Provide cut-outs where required, and bind cut edges properly where not concealed by protective edge guards or overlapping flanges.
- D. Install carpet edge guard where edge of carpet is exposed; anchor guard to substrate.

## **3.3 GLUE-DOWN INSTALLATION**

Classroom Addition for  
Union Hill School  
Somerville, Alabama for the  
Morgan County Board of Education

CARPET  
09680-2

- A. Fit sections of carpets into each space prior to application of adhesive. Trim edges and butter cuts with seaming cement.
- B. Apply adhesive uniformly to substrate in accordance with manufacturers' instructions. Butt carpet edges tightly together to form seams without gaps. Roll lightly to eliminate air pockets and ensure uniform bond. Remove adhesive promptly from face of carpet.
- C. All seams are to be sealed or bonded together with the manufacturer's approved product and method.

### **3.4 CLEANING AND PROTECTION**

- A. Remove debris, sorting pieces to be saved from scraps to be disposed of.
- B. Vacuum carpet using commercial machine with face-beater element. Remove spots and replace carpet where spots cannot be removed.
- C. Advise Contractor of protection methods and materials needed to ensure that carpeting will be without deterioration or damage at time of substantial completion.

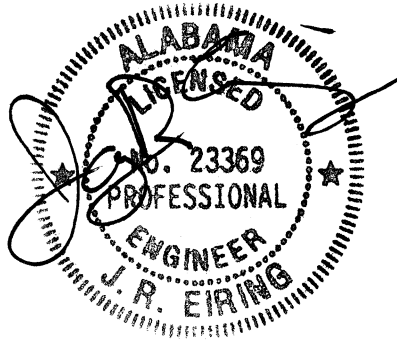
### **END OF SECTION**



ZGOUVAS, EIRING & ASSOCIATES  
CONSULTING ENGINEERS, INC.

## HVAC Addendum Classroom Addition for Union Hill School

November 2, 2022



1. Refer to the specifications Section 15700, Part 14 Split System Heat Pumps, Part 15 Wall Mounted Ductless Split System Heat Pumps, Part 16 Split System Cassette Type Heat Pump and revise as follows:

Trane is no longer an approved equivalent.

Part 14 Allowable Manufacturers are Carrier, Lennox and Bryant

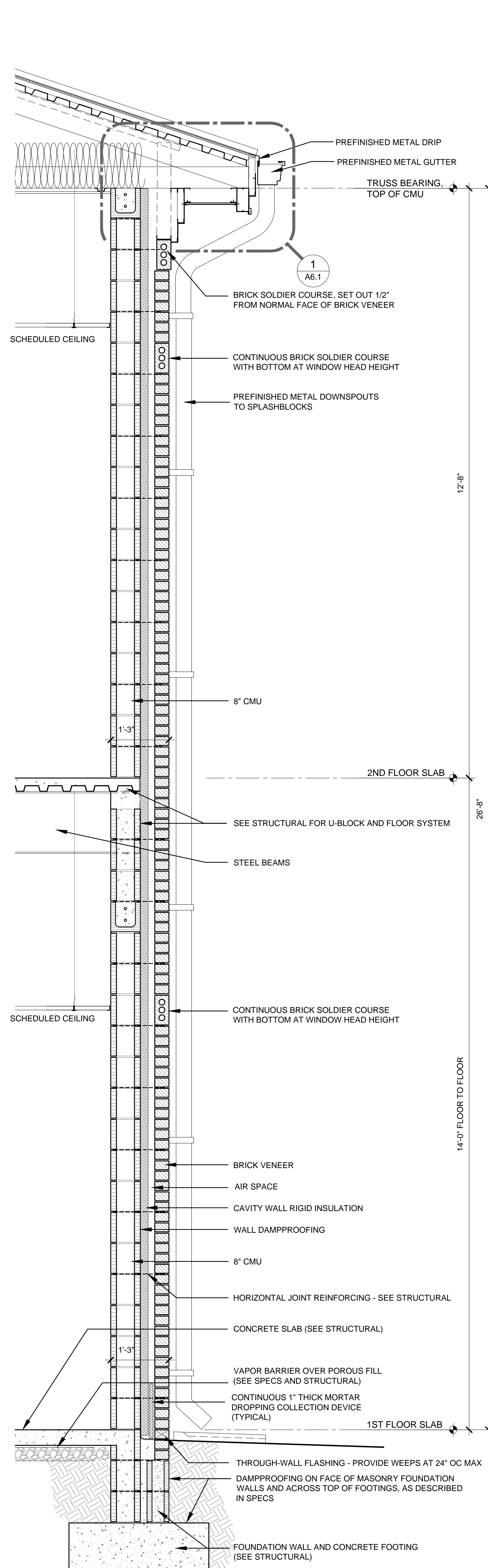
Part 15 Allowable Manufacturers are Carrier, Lennox and Bryant

Part 16 Allowable Manufacturers are Carrier, Lennox and Bryant

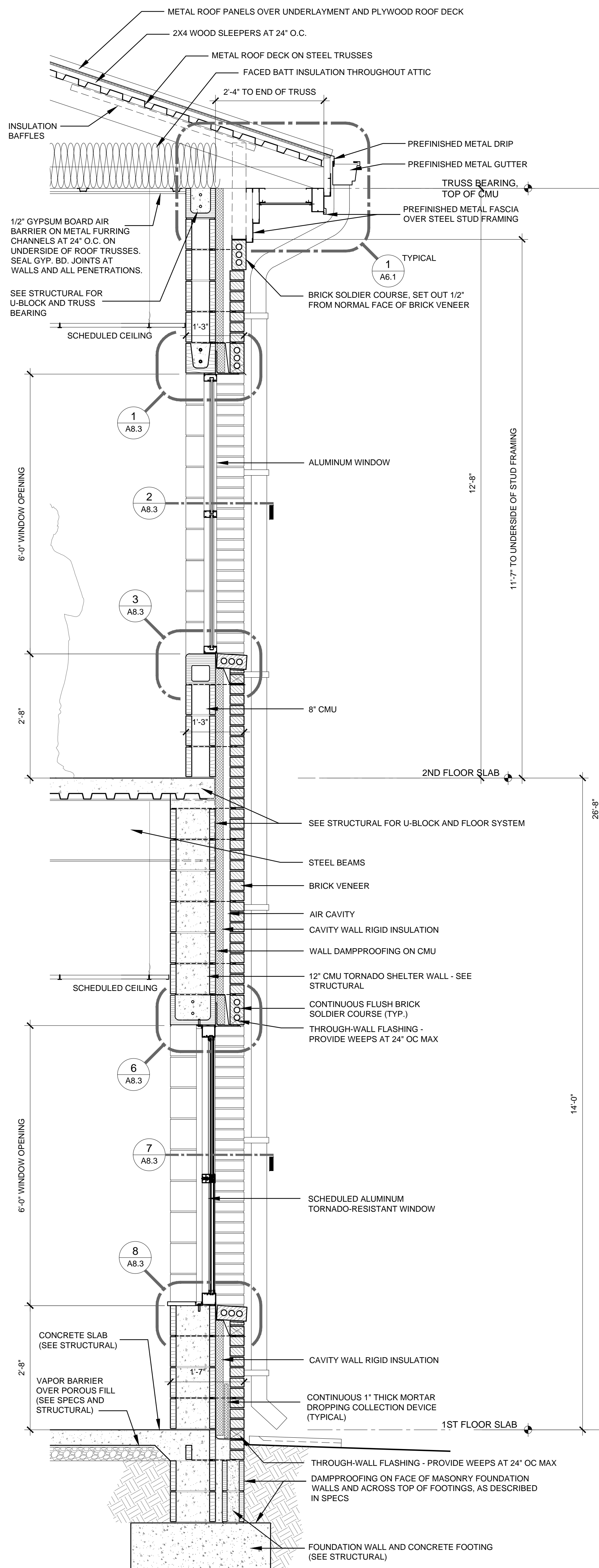
END OF ADDENDUM



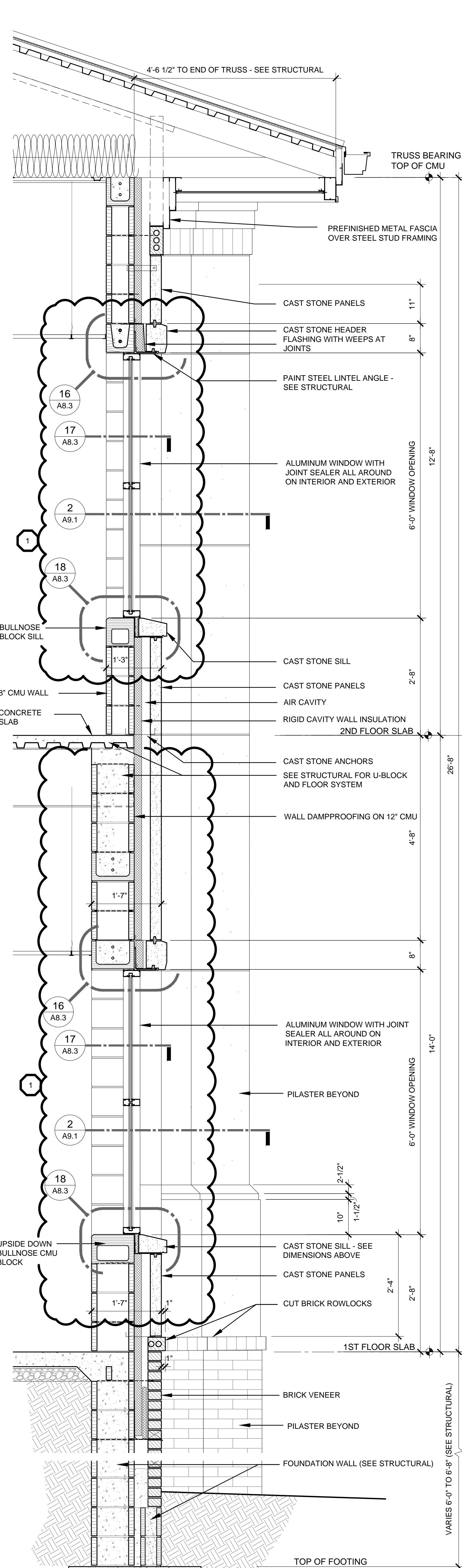
- Z:\2022\22-134 Classroom Addition for Union Hill School\CAD Drawings\Architectural\A6.1 Wall Sections.dwg  
- Friday, October 28, 2022 2:24:14 PM



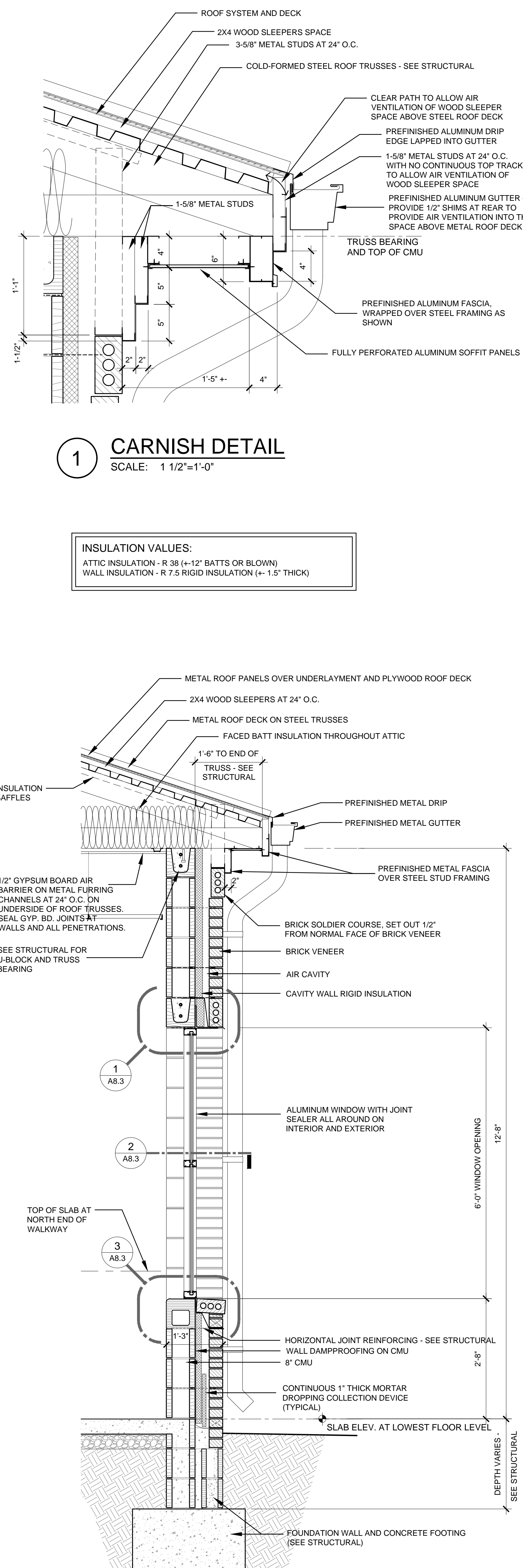
**A** WALL SECTION AT NORMAL WALL  
SCALE: 3/4"=1'-0"



**B** WALL SECTION AT SHELTER WALL  
SCALE: 3/4"=1'-0"



**C** WALL SECTION AT STONE FEATURE  
SCALE: 3/4"=1'-0"



**D** WALL SECTION AT ENCLOSED WALKWAY  
SCALE: 3/4"=1'-0"

**1** CARNISH DETAIL  
SCALE: 1 1/2"=1'-0"

INSULATION VALUES:  
ATTIC INSULATION - R 38 (+12" BATTS OR BLOWN)  
WALL INSULATION - R 7.5 RIGID INSULATION (+1.5" THICK)

## CLASSROOM ADDITION

FOR

UNION HILL SCHOOL

SOMERVILLE, ALABAMA

FOR THE

MORGAN COUNTY BOARD OF EDUCATION

**McKEE and ASSOCIATES**  
ARCHITECTS, INC.

631 SOUTH HILL STREET, MONTGOMERY, ALABAMA 36104 (334) 834-9933



SHEET TITLE : WALL SECTIONS

McKEE JOB # : 22-134

DRAWN BY : VH

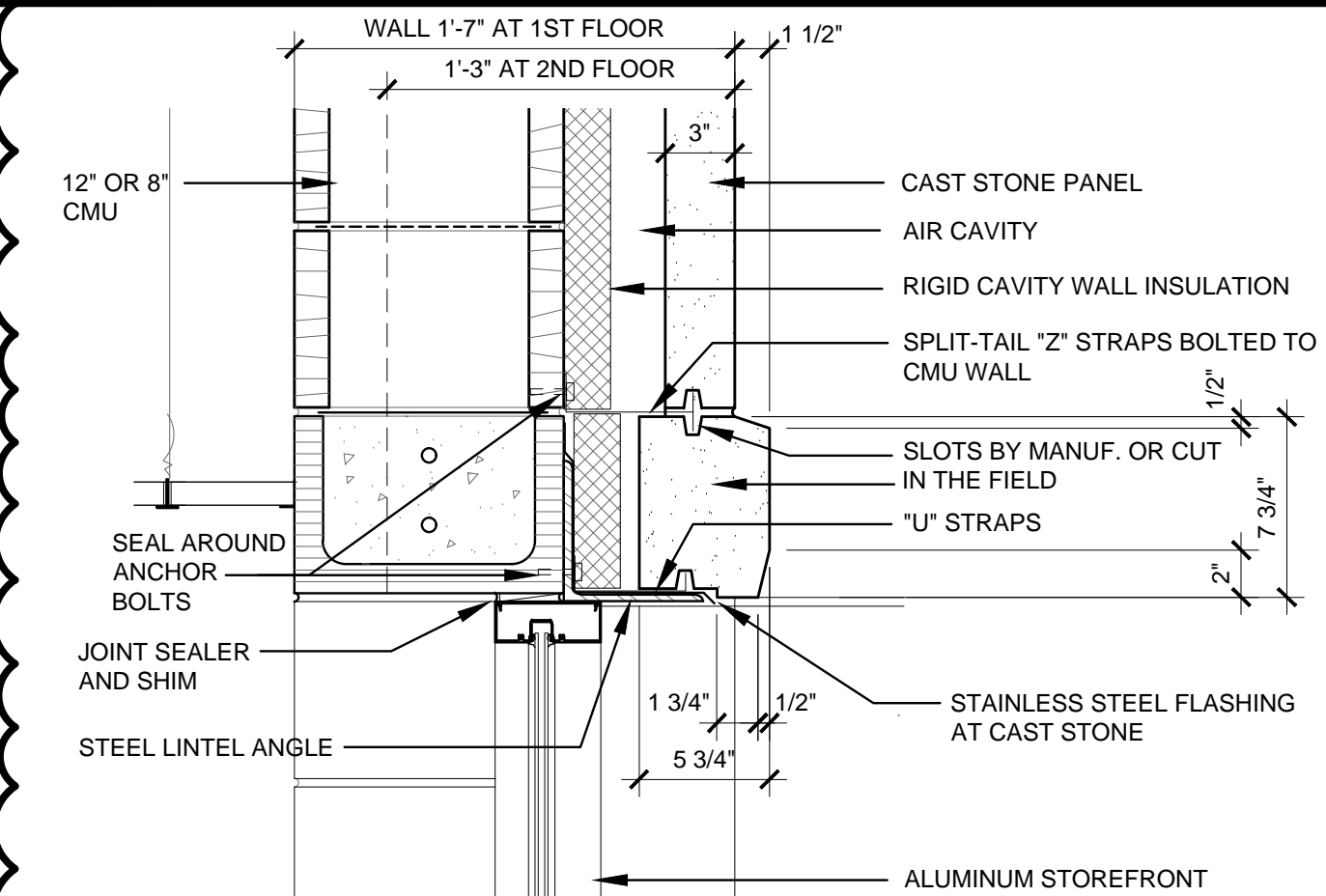
DATE : 10-13-2022

REVISED DATE : 10-31-2022

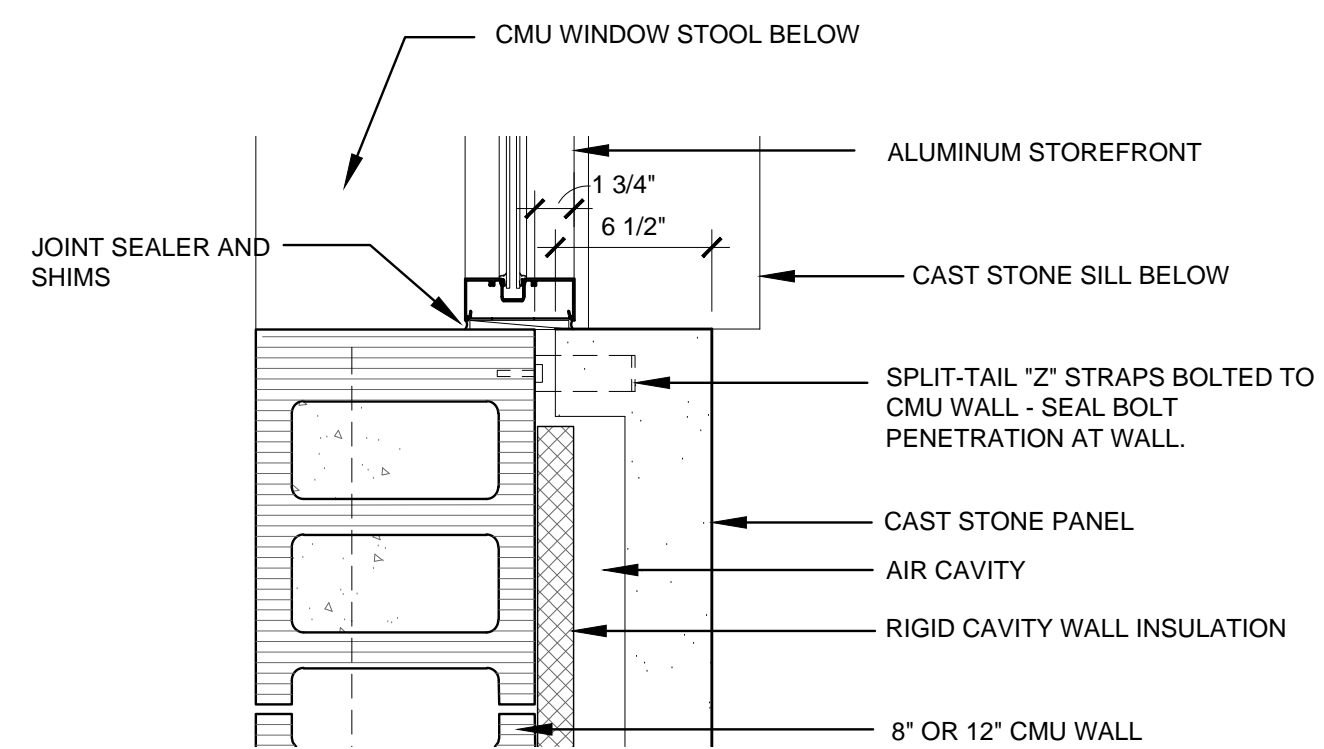
REVISED DATE :

REVISED DATE :

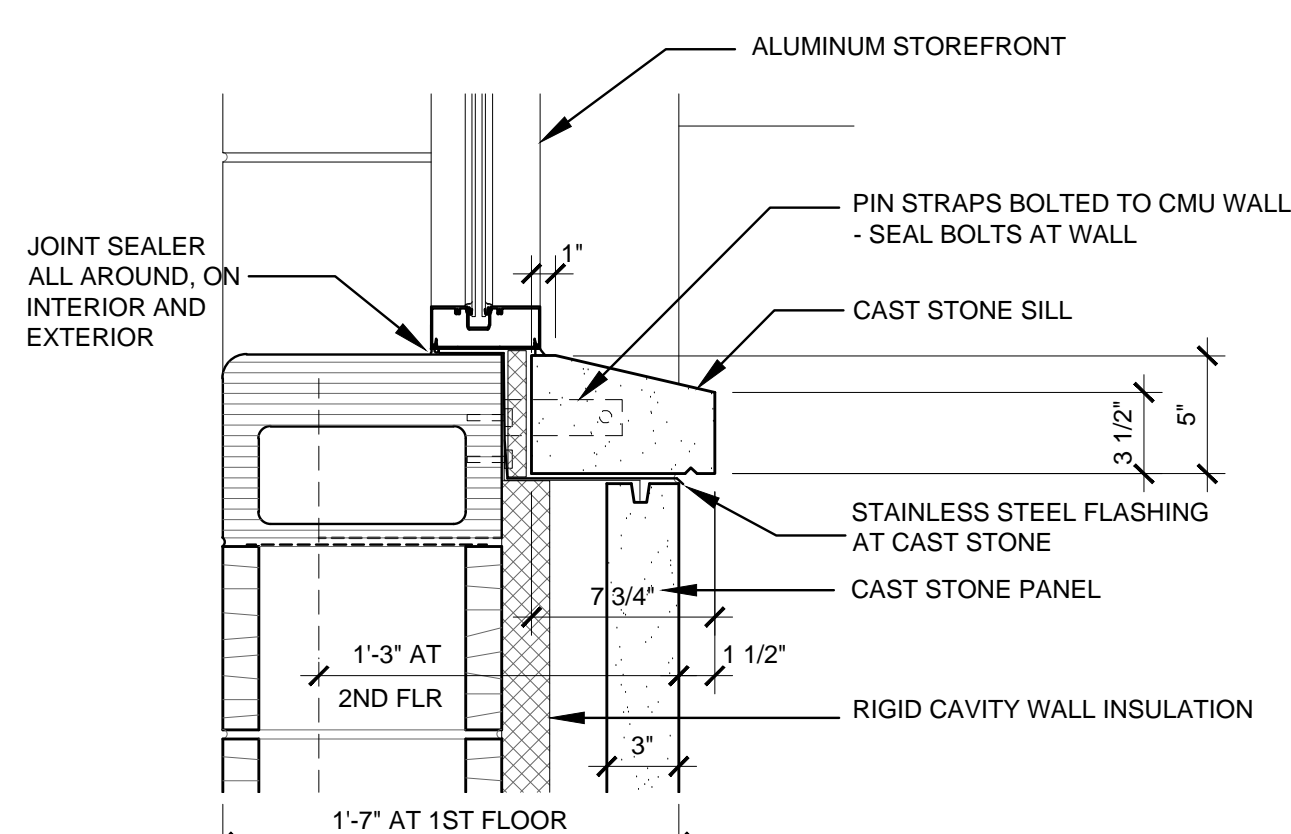
SHEET NO. : **A6.1**



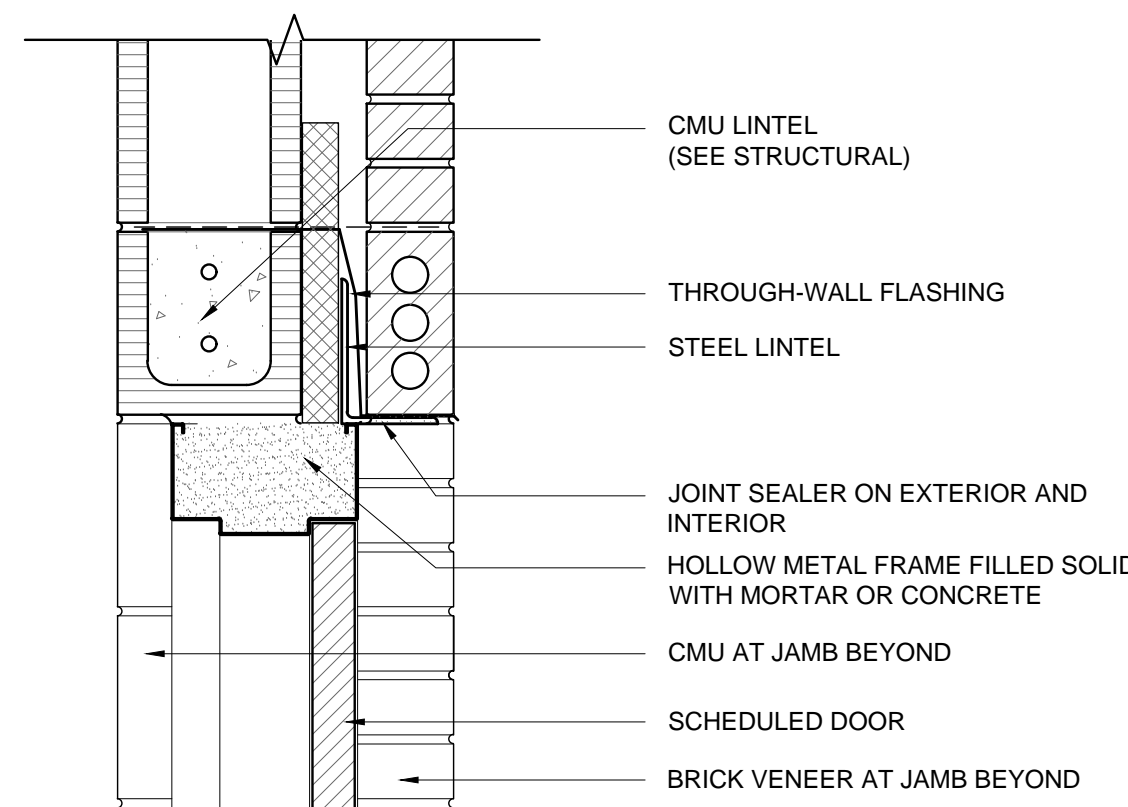
16 WINDOW DETAIL  
SCALE: 1 1/2"=1'-0" HEAD



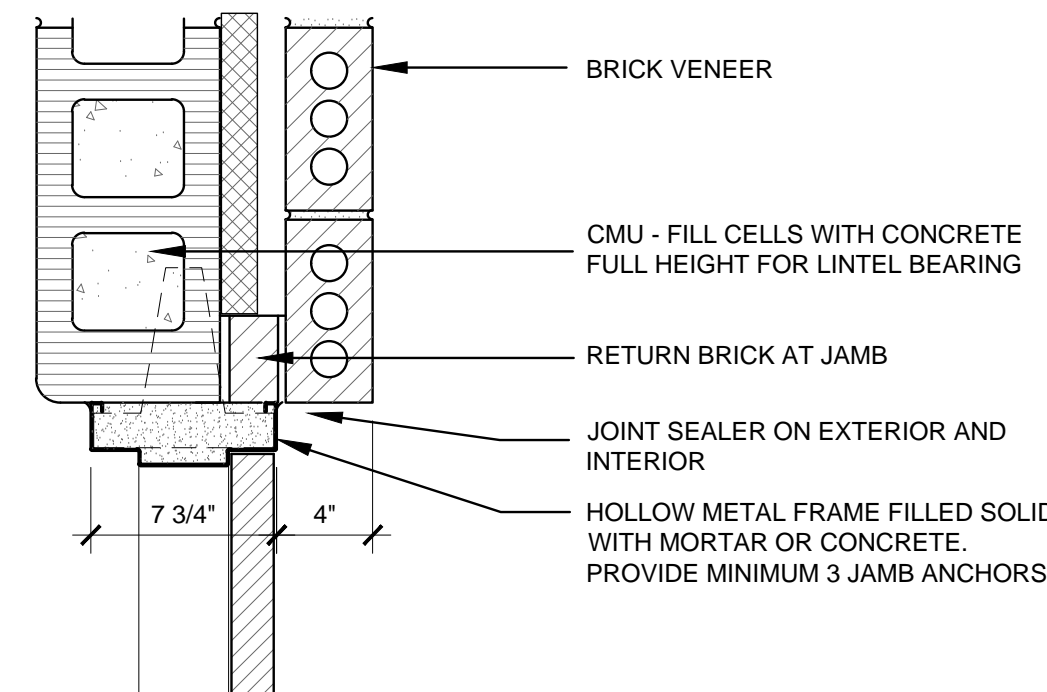
17 WINDOW DETAIL  
SCALE: 1 1/2"=1'-0" JAMB



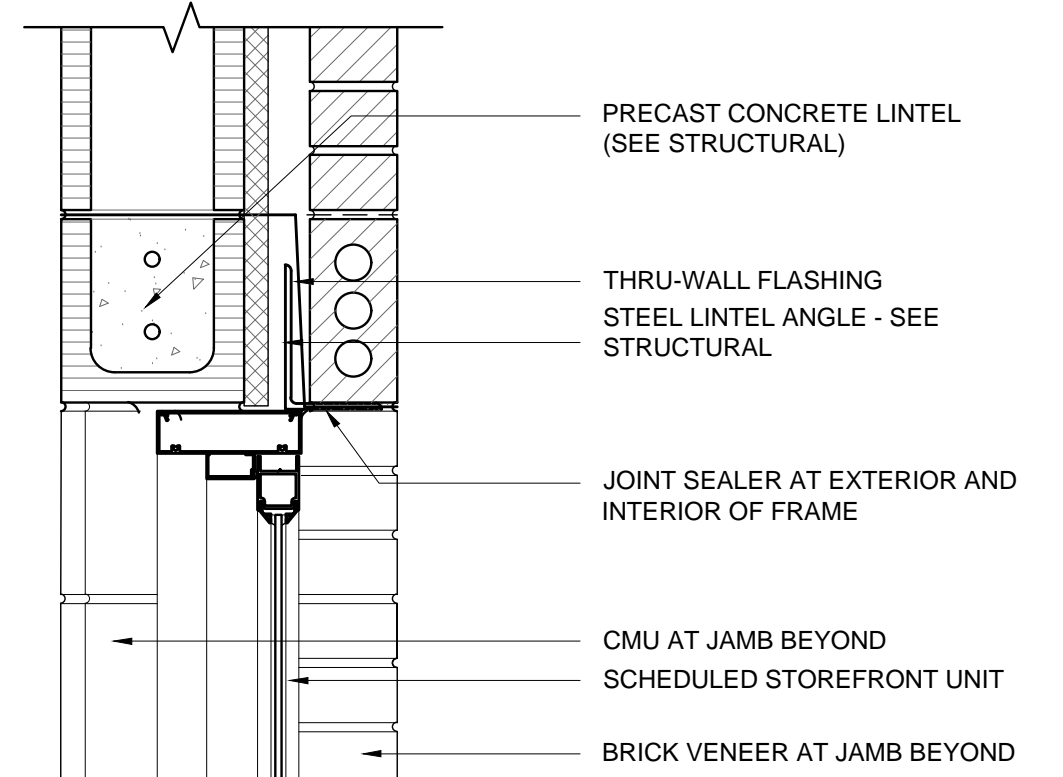
18 WINDOW DETAIL  
SCALE: 1 1/2"=1'-0" SILL



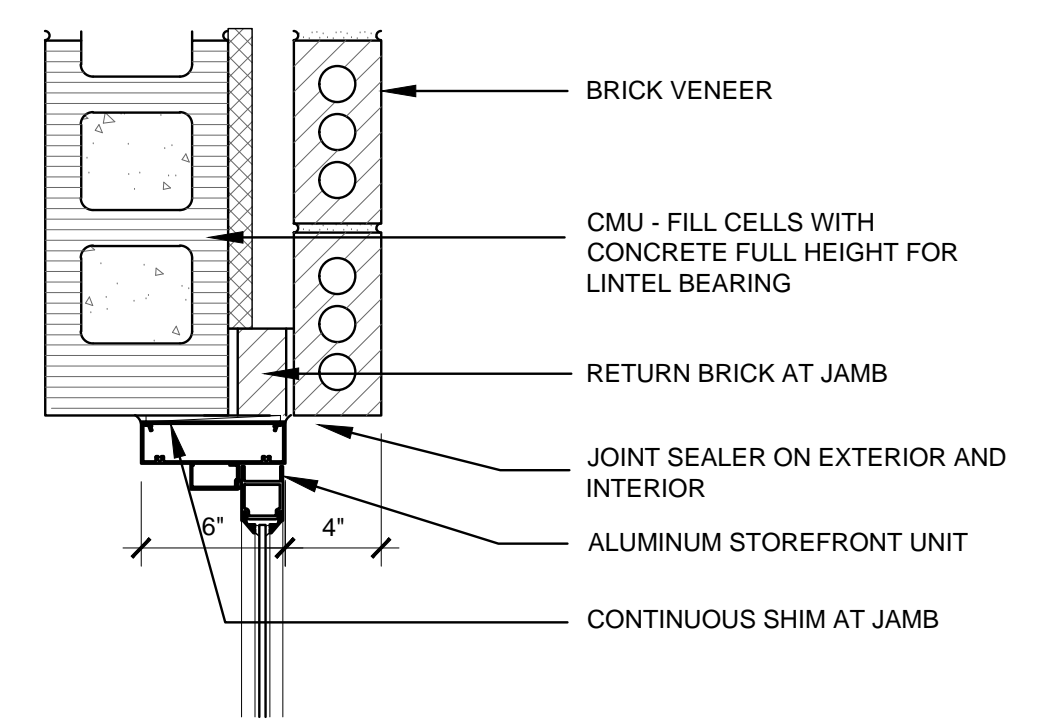
11 DOOR DETAIL  
SCALE: 1 1/2"=1'-0" HEAD



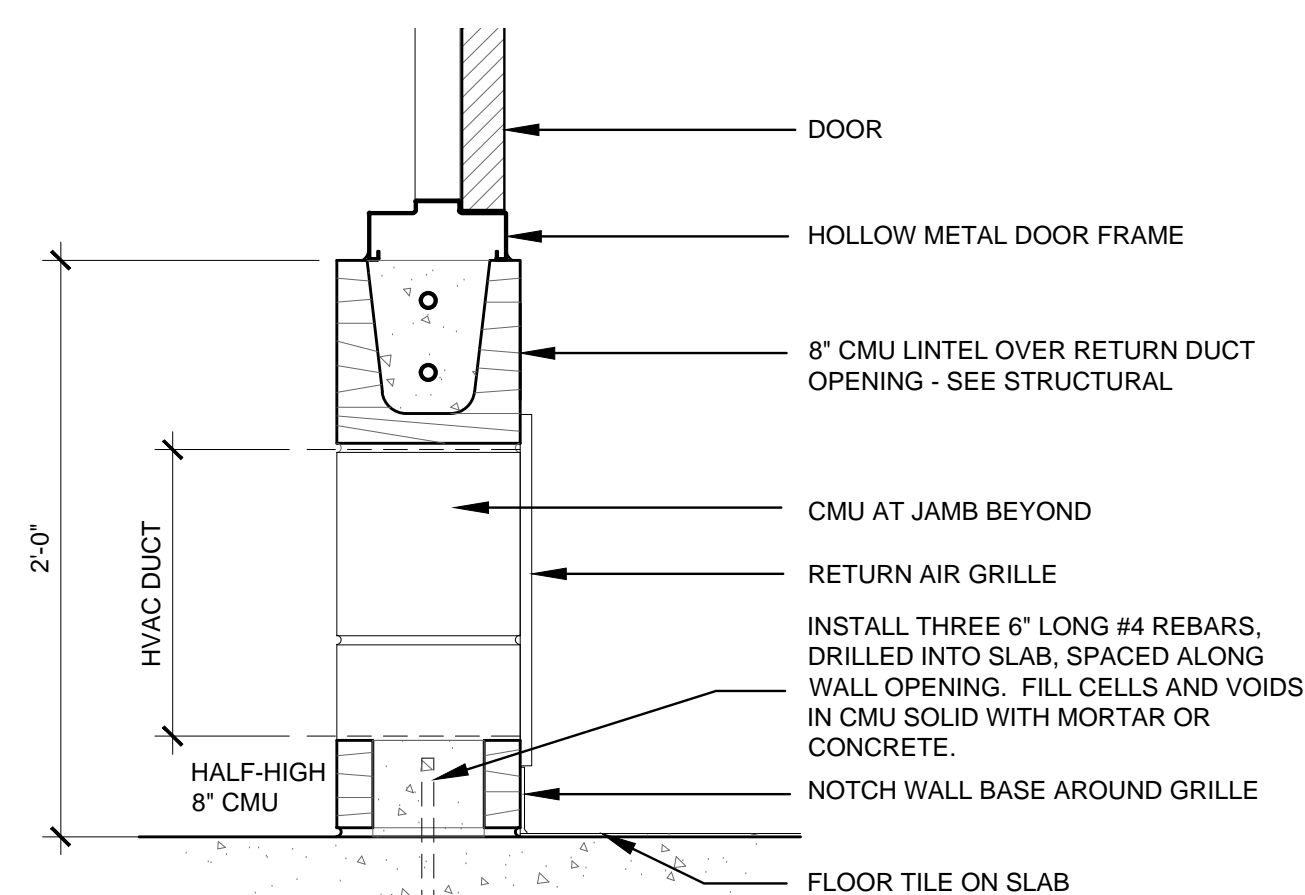
12 DOOR DETAIL  
SCALE: 1 1/2"=1'-0" JAMB



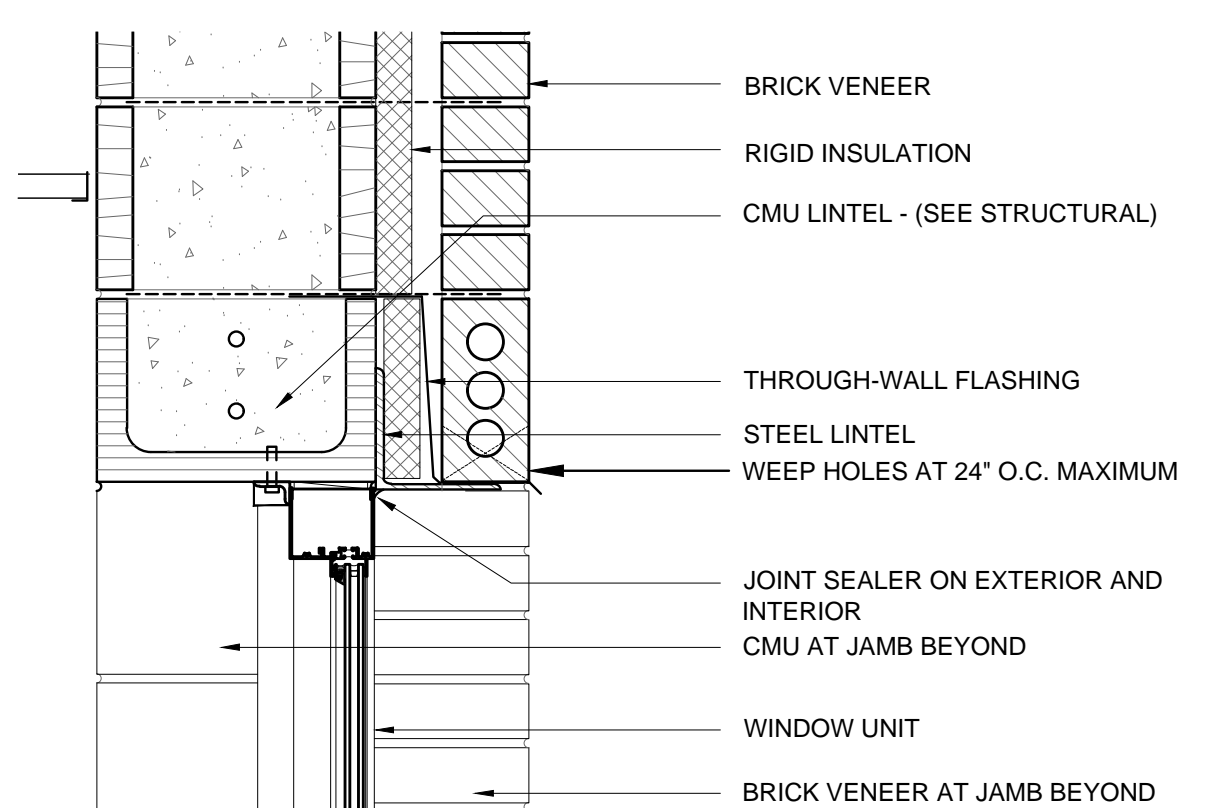
13 DOOR DETAIL  
SCALE: 1 1/2"=1'-0" HEAD



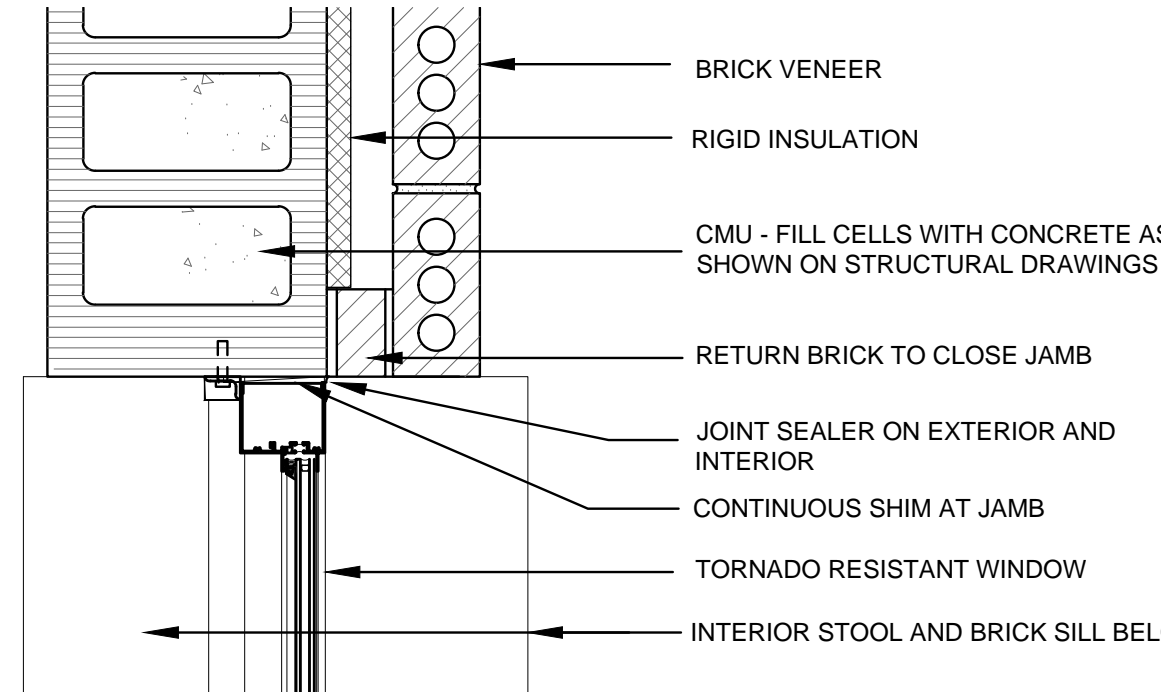
14 DOOR DETAIL  
SCALE: 1 1/2"=1'-0" JAMB



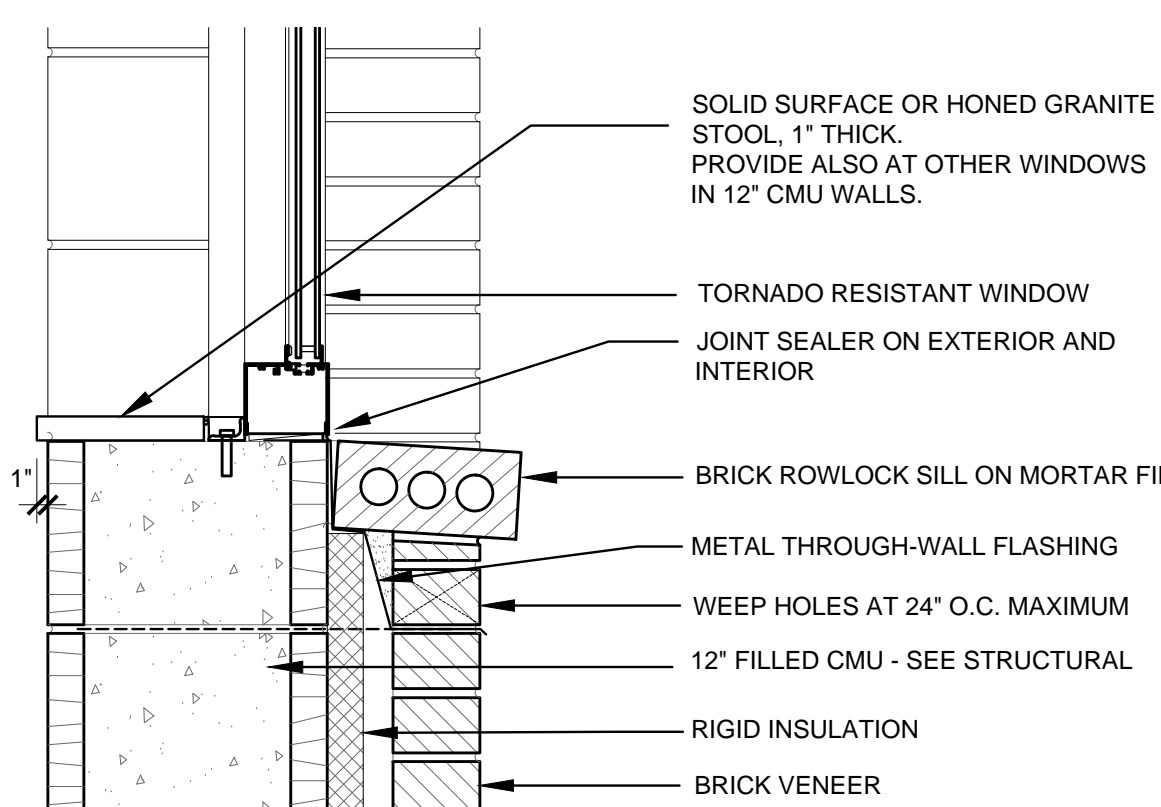
15 DOOR DETAIL - MECH ROOM  
SCALE: 1 1/2"=1'-0" SILL



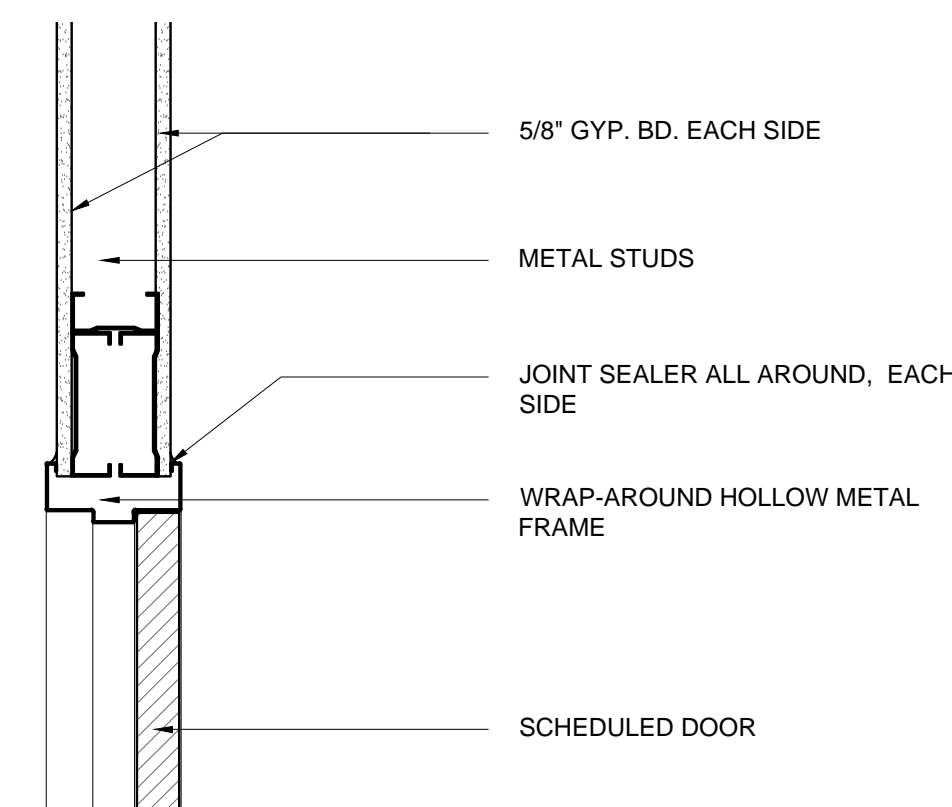
6 TORNADO WINDOW DETAIL  
SCALE: 1 1/2"=1'-0" HEAD



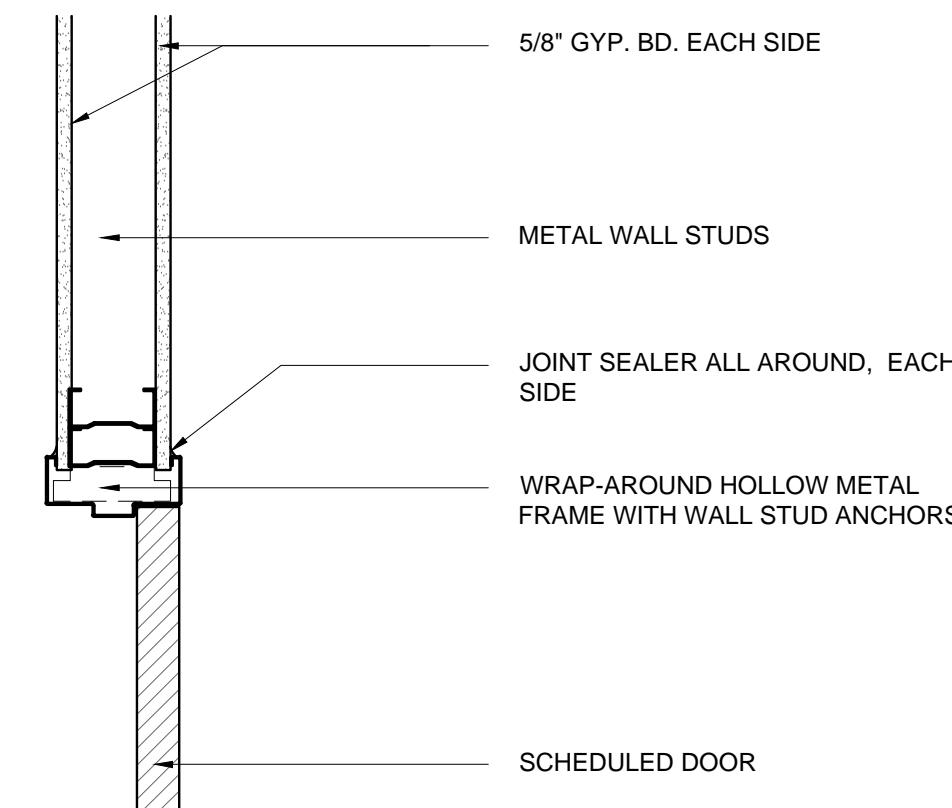
7 TORNADO WINDOW DETAIL  
SCALE: 1 1/2"=1'-0" JAMB



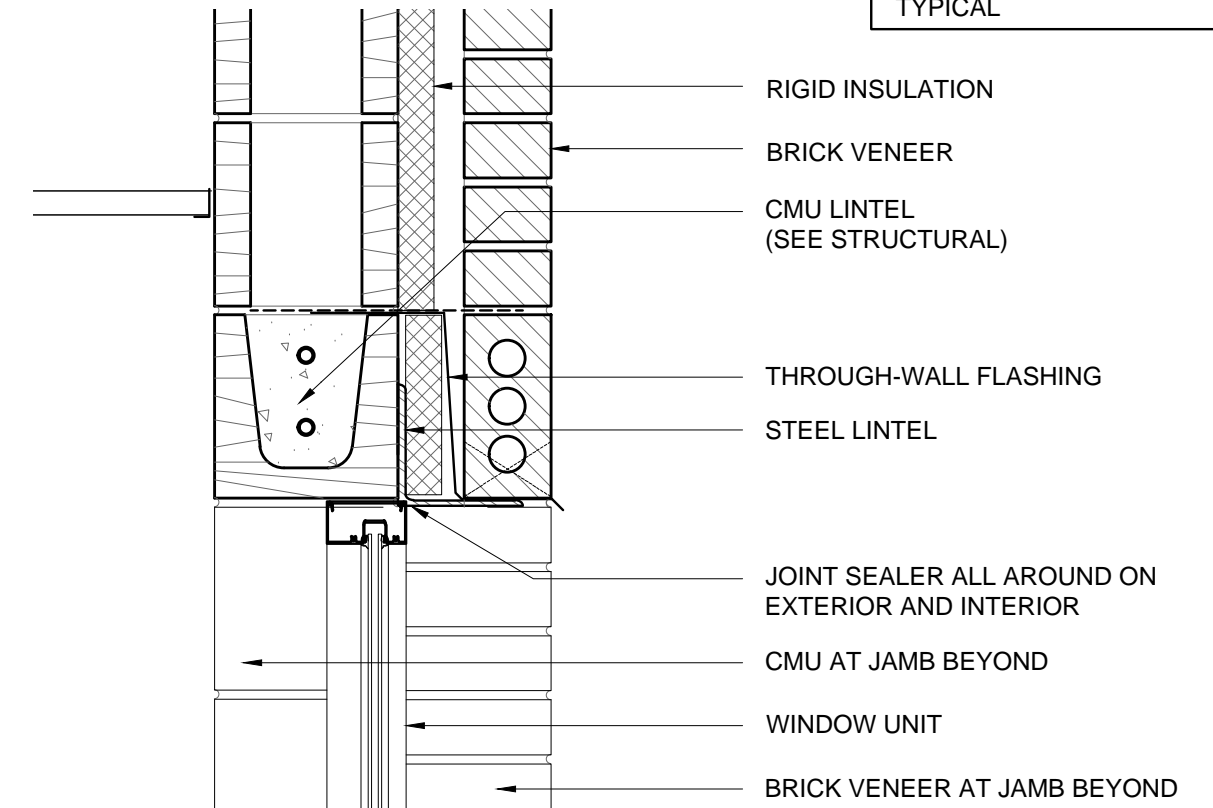
8 TORNADO WINDOW DETAIL  
SCALE: 1 1/2"=1'-0" SILL



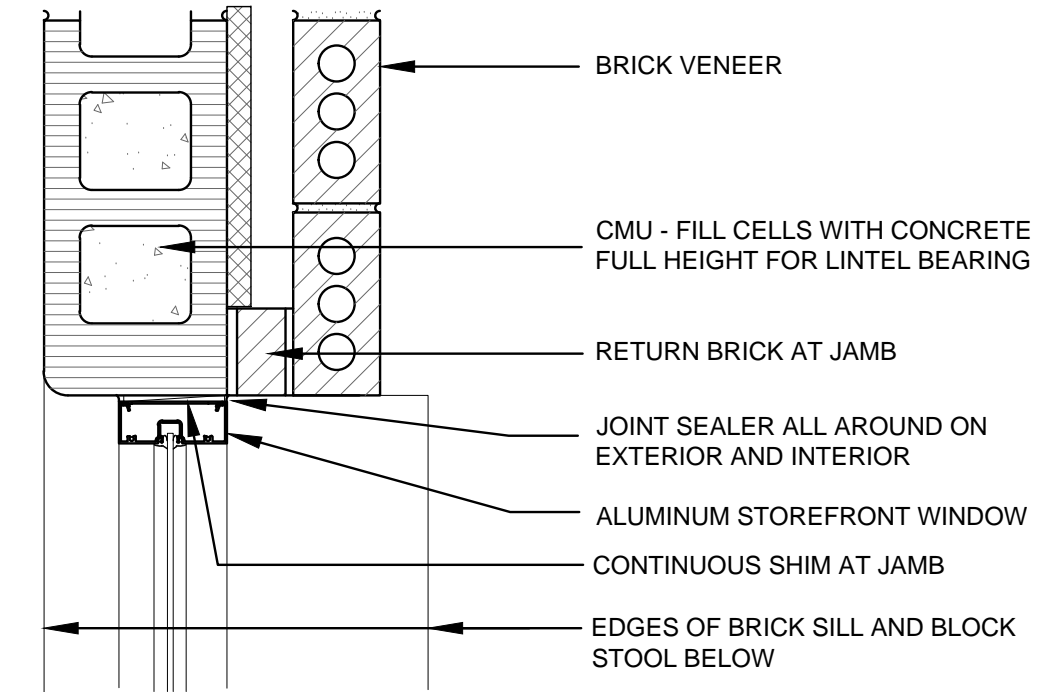
9 DOOR DETAIL  
SCALE: 1 1/2"=1'-0" HEAD



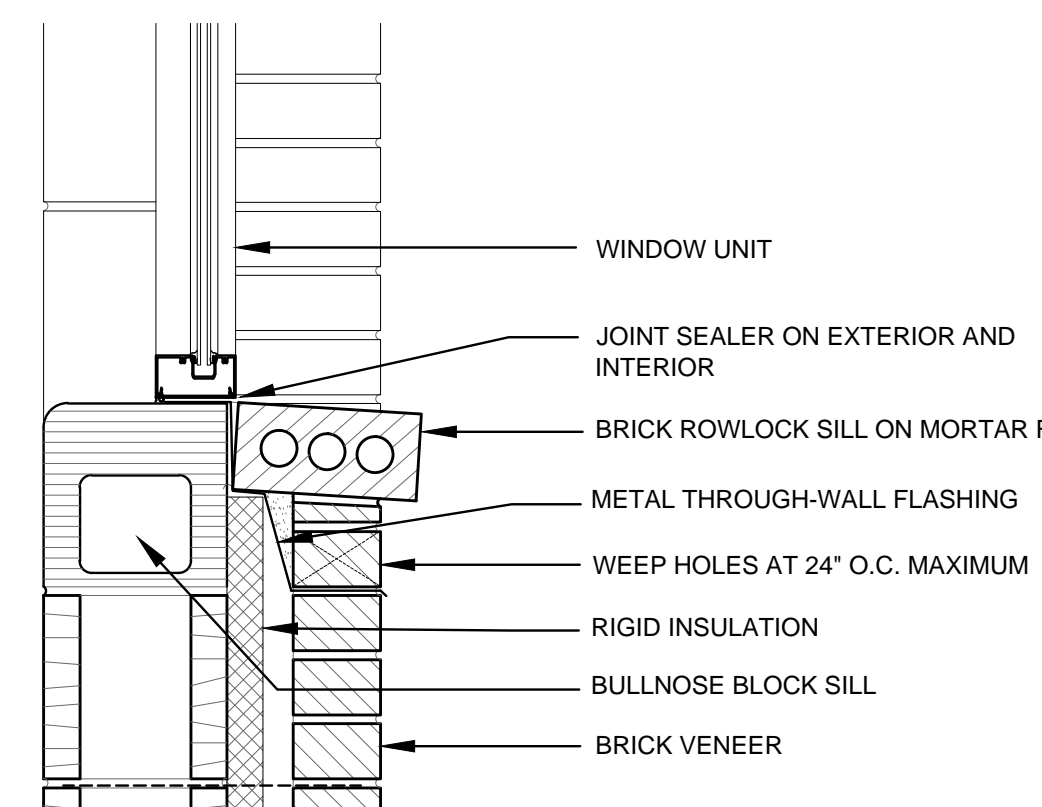
10 DOOR DETAIL  
SCALE: 1 1/2"=1'-0" JAMB



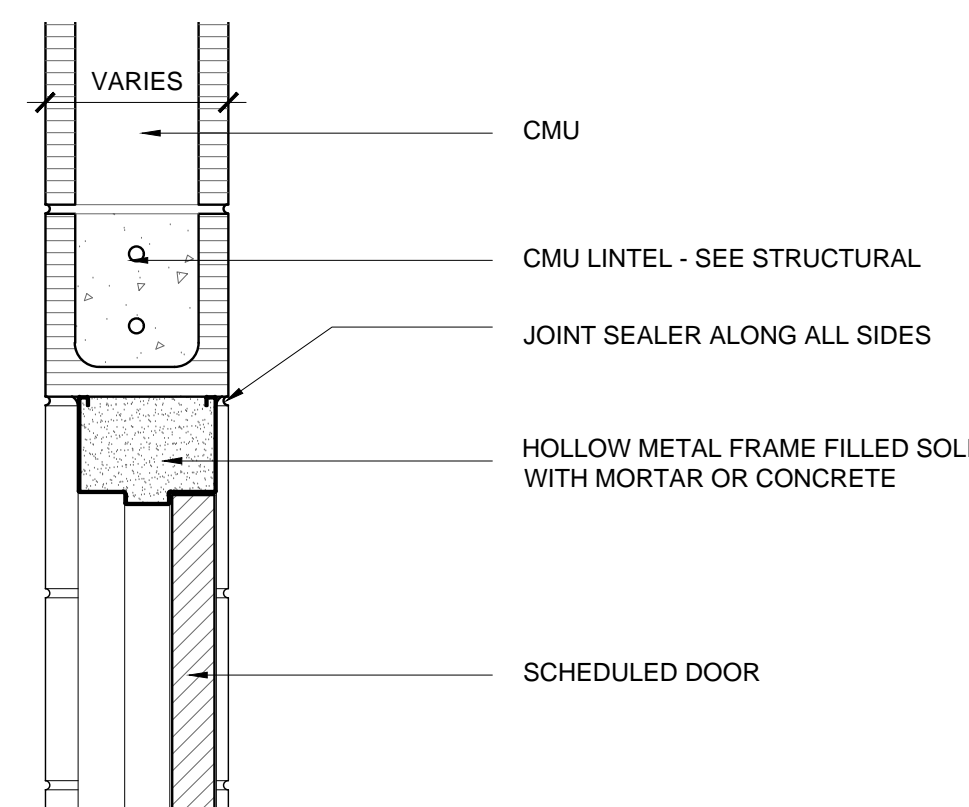
1 WINDOW DETAIL  
SCALE: 1 1/2"=1'-0" HEAD



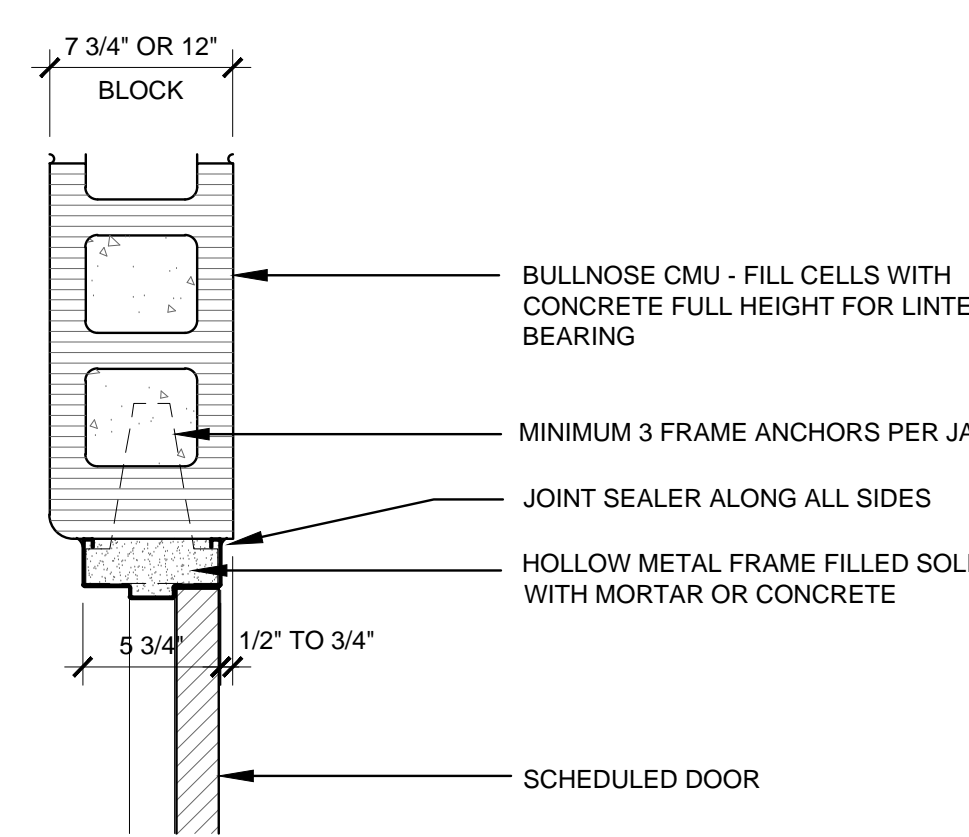
2 WINDOW DETAIL  
SCALE: 1 1/2"=1'-0" JAMB



3 WINDOW DETAIL  
SCALE: 1 1/2"=1'-0" SILL



4 DOOR DETAIL  
SCALE: 1 1/2"=1'-0" HEAD



5 DOOR DETAIL  
SCALE: 1 1/2"=1'-0" JAMB

GENERAL NOTE: WRAP ALL EXPOSED STEEL LINTELS AND PLATES IN BRAKE METAL TYPICAL

CLASSROOM ADDITION

FOR  
UNION HILL SCHOOL

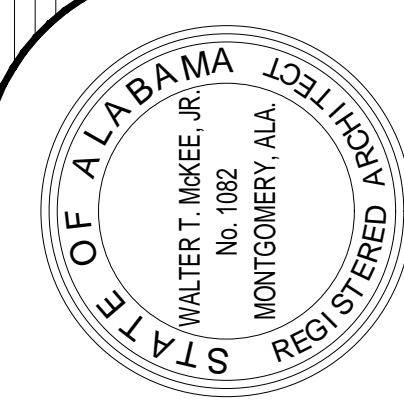
SOMERVILLE, ALABAMA

FOR THE

MORGAN COUNTY BOARD OF EDUCATION

MCKEE and ASSOCIATES  
ARCHITECTS, INC.

631 SOUTH HILL STREET, MONTGOMERY, ALABAMA 36104 (334) 834-9933



SHEET TITLE : DOOR AND WINDOW DETAILS

MCKEE JOB # : 22-134

DRAWN BY : VH

DATE: 10-13-2022

REVISED DATE: 10-31-2022

REVISED DATE:

REVISED DATE:

SHEET NO. : A8.3



STORM SHELTER NOTES:

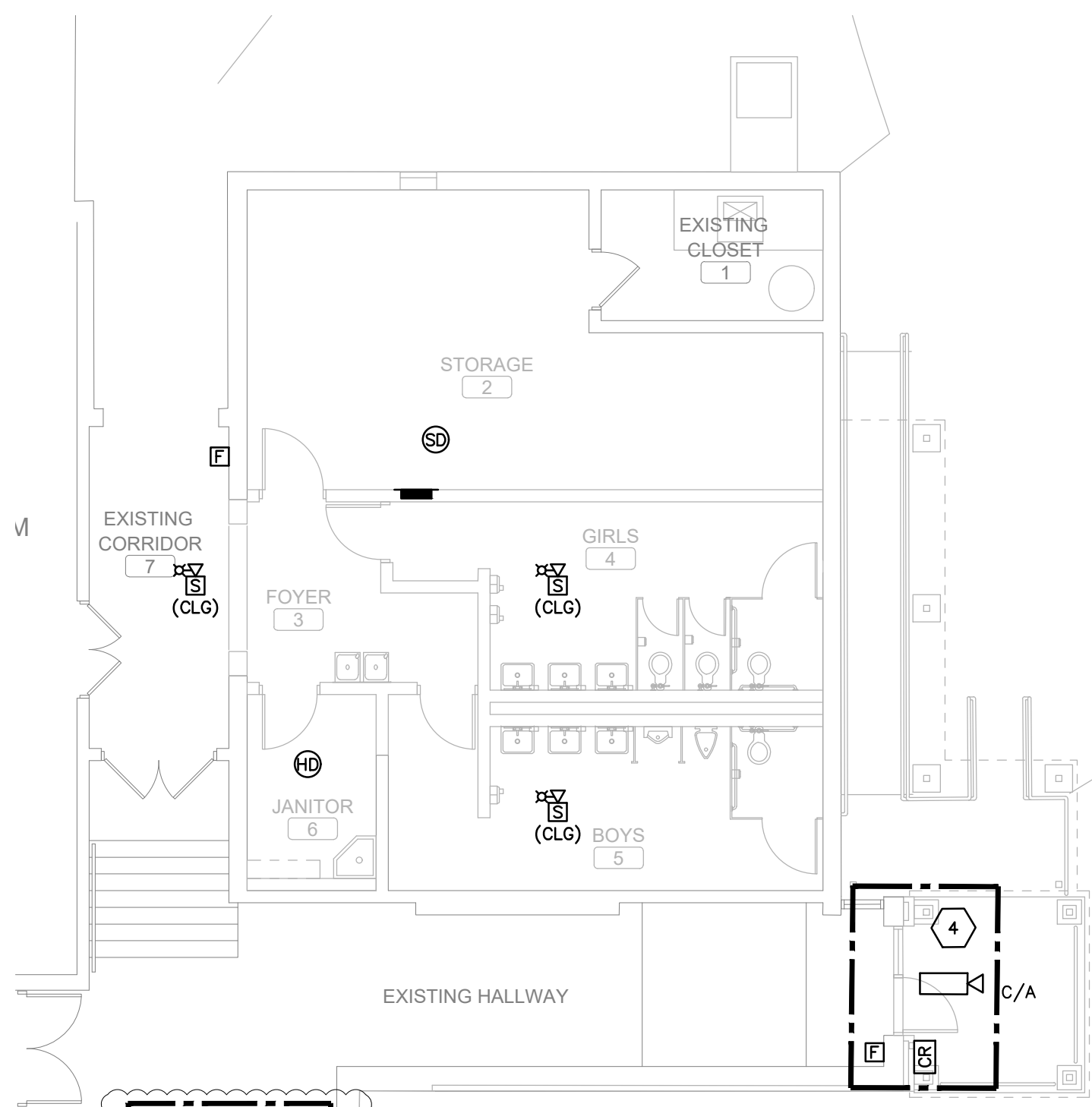
1. CONTRACTOR SHALL INSTALL ALL CONDUITS ENTERING OR EXITING THE STORM SHELTER UNDERGROUND SUCH THAT THEY DO NOT PENETRATE THE STORM SHELTER WALLS OR CEILING. IF A PENETRATION IS REQUIRED, THEN THERE SHALL BE NO PENETRATION GREATER THAN 2". ANY PENETRATIONS SHALL CONFORM TO ICC 500.

SHEET NOTES:

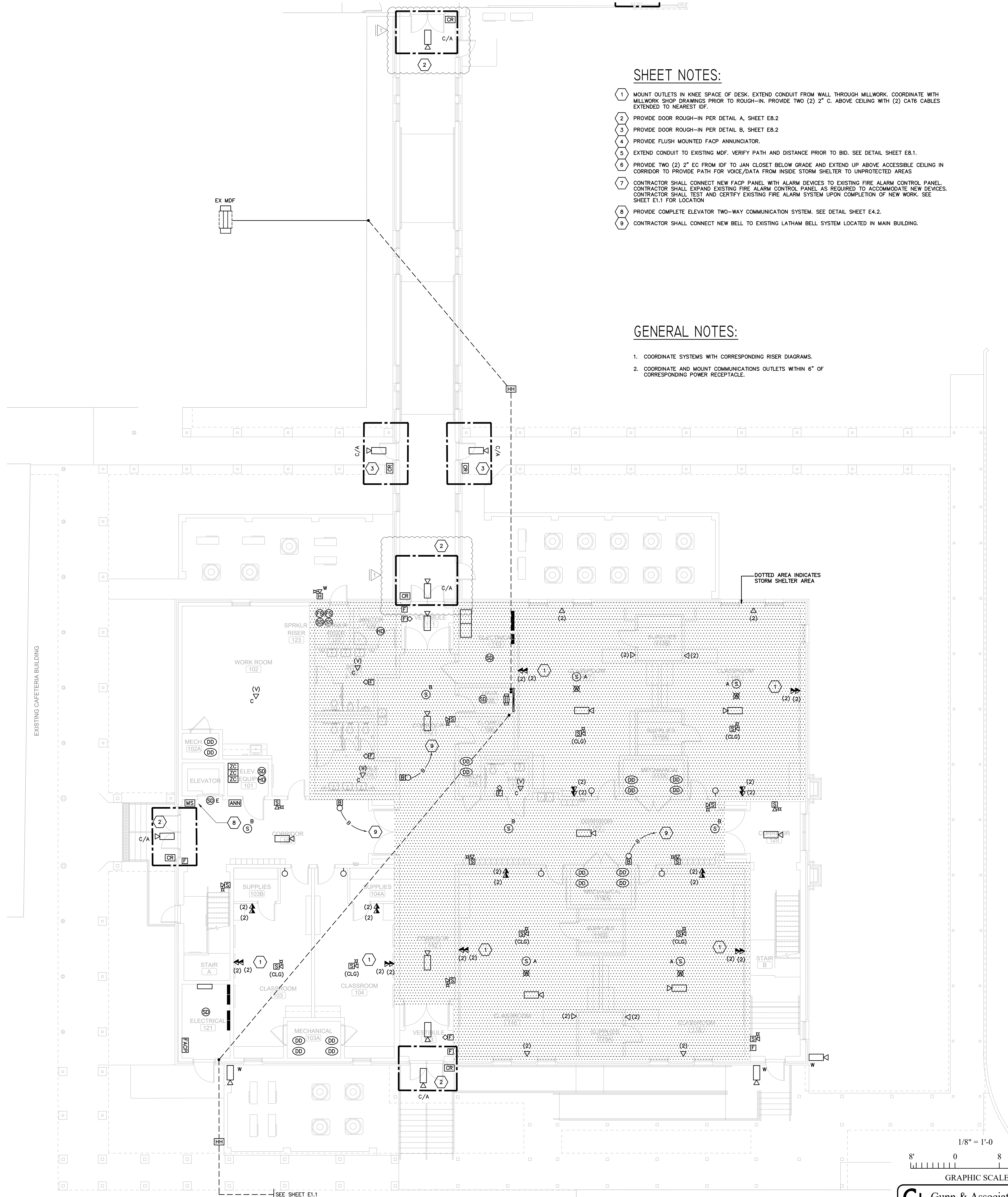
1. MOUNT OUTLETS IN KNEE SPACE OF DESK. EXTEND CONDUIT FROM WALL THROUGH MILLWORK. COORDINATE WITH MILLWORK SHOP DRAWINGS PRIOR TO ROUGH-IN. PROVIDE TWO (2) 2" C. ABOVE CEILING WITH (2) CAT6 CABLES EXTENDED TO NEAREST IDF.
2. PROVIDE DOOR ROUGH-IN PER DETAIL A, SHEET E8.2
3. PROVIDE DOOR ROUGH-IN PER DETAIL B, SHEET E8.2
4. PROVIDE FLUSH MOUNTED FACP ANNUNCIATOR.
5. EXTEND CONDUIT TO EXISTING MDF. VERIFY PATH AND DISTANCE PRIOR TO BID. SEE DETAIL SHEET E8.1.
6. PROVIDE TWO (2) 2" EC FROM IDF TO JAN CLOSET BELOW GRADE AND EXTEND UP ABOVE ACCESSIBLE CEILING IN CORRIDOR TO PROVIDE PATH FOR VOICE/DATA FROM INSIDE STORM SHELTER TO UNPROTECTED AREAS
7. CONTRACTOR SHALL CONNECT NEW FACP PANEL WITH ALARM DEVICES TO EXISTING FIRE ALARM CONTROL PANEL. CONTRACTOR SHALL EXPAND EXISTING FIRE ALARM CONTROL PANEL AS REQUIRED TO ACCOMMODATE NEW DEVICES. CONTRACTOR SHALL TEST AND CERTIFY EXISTING FIRE ALARM SYSTEM UPON COMPLETION OF NEW WORK. SEE SHEET E1.1 FOR LOCATION
8. PROVIDE COMPLETE ELEVATOR TWO-WAY COMMUNICATION SYSTEM. SEE DETAIL SHEET E4.2.
9. CONTRACTOR SHALL CONNECT NEW BELL TO EXISTING LATHAM BELL SYSTEM LOCATED IN MAIN BUILDING.

GENERAL NOTES:

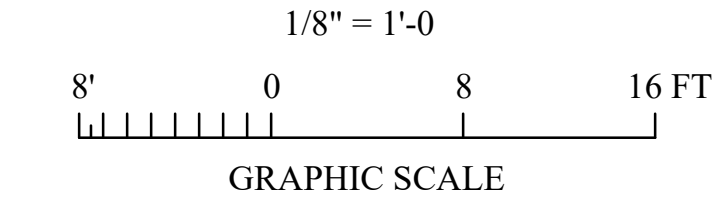
1. COORDINATE SYSTEMS WITH CORRESPONDING RISER DIAGRAMS.
2. COORDINATE AND MOUNT COMMUNICATIONS OUTLETS WITHIN 6" OF CORRESPONDING POWER RECEPTACLE.



PROJECT NORTH  
RESTROOM FLOOR PLAN- AUXILIARY  
SCALE: 1/8"=1'-0"



PROJECT NORTH  
FIRST FLOOR PLAN- AUXILIARY  
SCALE: 1/8"=1'-0"



**Gunn & Associates, P.C.**  
Consulting Engineers  
3102 Highway 14  
Millbrook, AL 36054  
Tel: 334-285-1273  
1200 Providence Park, Suite 200  
Birmingham, AL 35242  
GA#22-065

SHEET TITLE : FIRST FLOOR PLAN - AUXILIARY  
MCKEE JOB # : 22-134  
DRAWN BY : CMB  
DATE : 10.13.2022  
REVISED DATE : 11.03.2022  
REVISED DATE :  
REVISED DATE :

SHEET NO. : E4.1

CLASSROOM ADDITION  
FOR  
UNION HILL SCHOOL  
SOMERVILLE, ALABAMA  
FOR THE  
MORGAN COUNTY BOARD OF EDUCATION

**McKee and Associates**  
ARCHITECTURE and INTERIOR DESIGN  
631 SOUTH HULL STREET MONTGOMERY, ALABAMA 36104 (334) 834-9833

