

300 CHASE PARK SOUTH • SUITE 200 • HOOVER, ALABAMA 35244
205-988-9112

**ADDENDUM NO. 7
NEW ADDITION AND RENOVATION FOR RUSSELLVILLE HIGH SCHOOL
PACKAGE B - RENOVATION
Architect Job No. 19-90B
DCM #2021216
August 3, 2022**

BIDS DUE:

Thursday, August 4, 2022, until
2:00 p.m. local time
Russellville City Board of Education
1945 Waterloo Road
Russellville, AL 35653

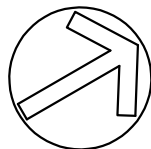
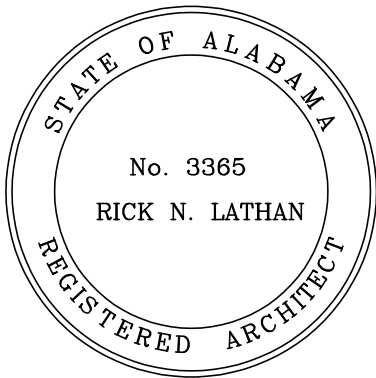
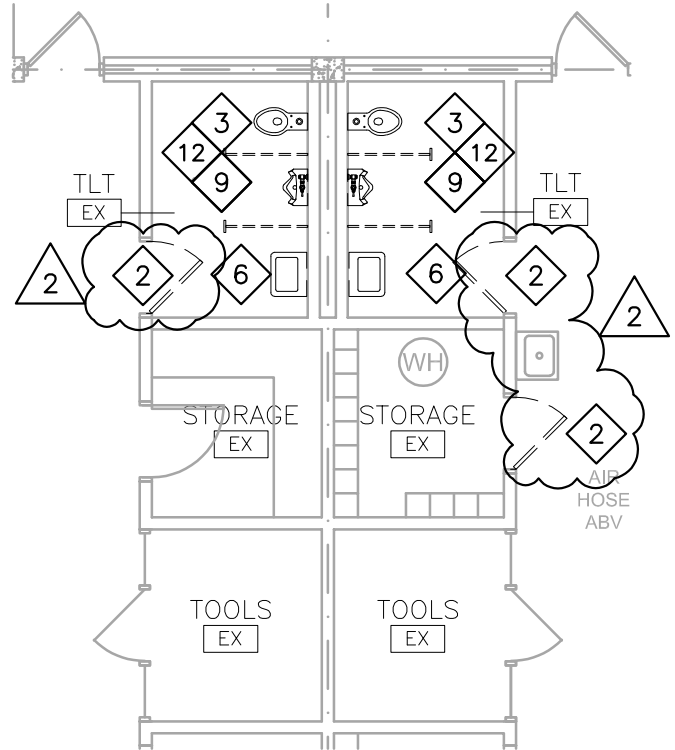
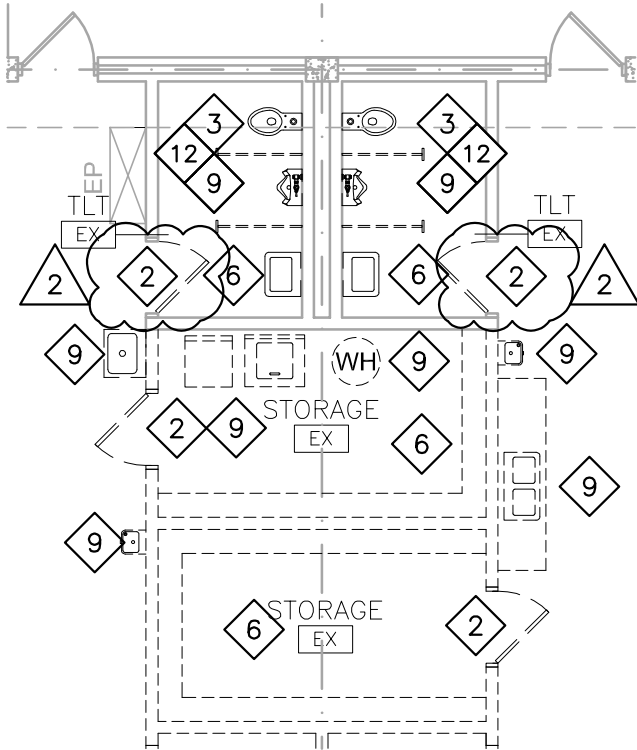
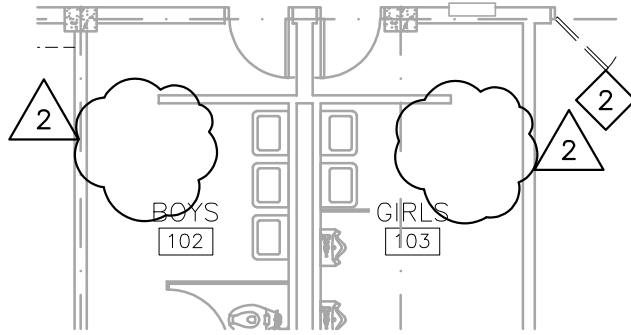
The Plans and Specifications are hereby amended. The following supersedes all contrary and/or conflicting information and is made part of the contract documents.

DRAWINGS

1. **ASD7.1 and ASD7.2** – Updated demolition plan removing demolition work from BOYS 102 and GIRLS 103. New doors have been added to TOILETS 105C, 105D, 131A, and 122A.

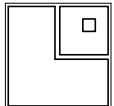
CLARIFICATIONS

1. Revise note on S2.1 from "3#5" to "#5 at each corner." Provide 4 #5 vertical at each pilaster.



5 FLOOR PLAN - DEMO

1/8" = 1'-0"



LATHAN ASSOCIATES
ARCHITECTS, P.C.
300 CHASE PARK SOUTH SUITE 200
HOOVER, ALABAMA 35244
PHONE: 205 988-9112

PROJECT:
NEW ADDITION AND RENOVATION FOR
RUSSELLVILLE HIGH SCHOOL PACKAGE 'B'
RENOVATIONS TO VOCATIONAL BUILDING

ARCHITECTURAL SUPPLEMENTAL DRAWING
DRAWING REVISIONS TO ORIGINAL SHEET NO. A2.0

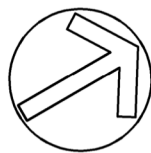
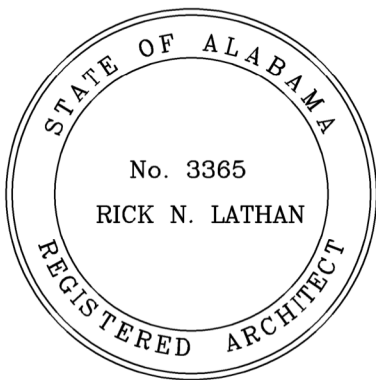
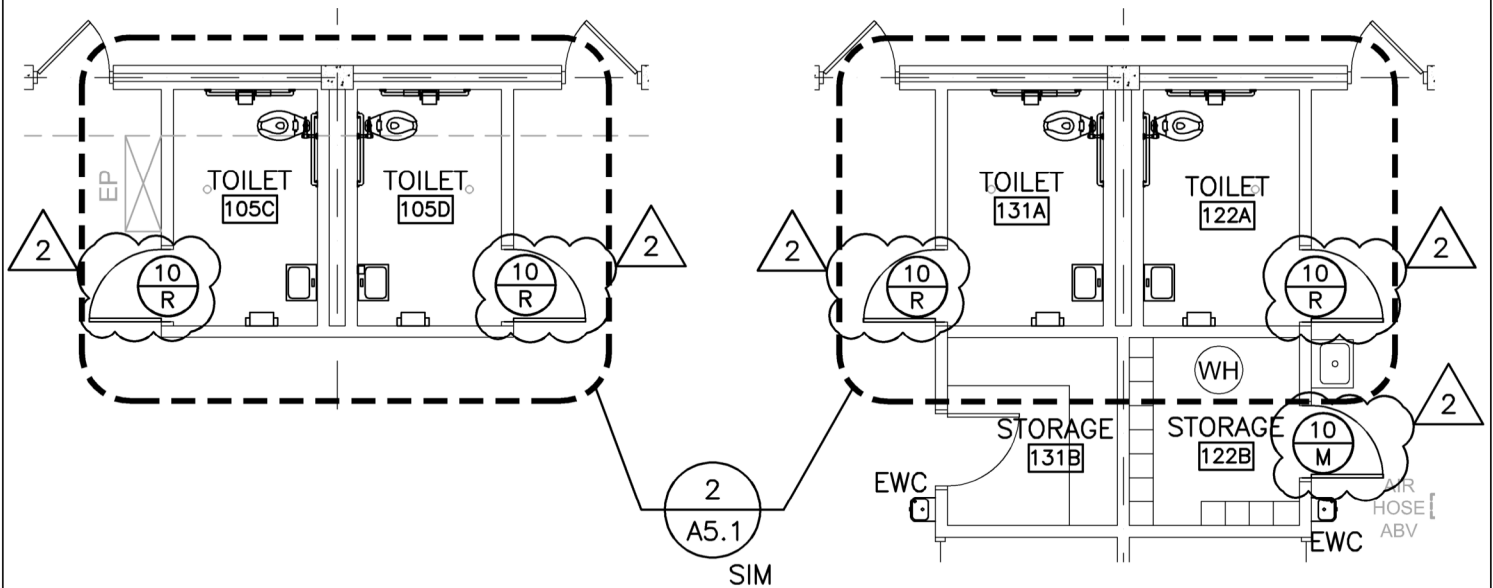
PROJECT NO.
19-90B

DATE:
8/1/22

REFERENCE:
ADDENDUM #7

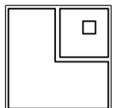
SHEET NO.
ASD 7.1

1 OF 2



1 FLOOR PLAN - NEW

1/8" = 1'-0"



LATHAN ASSOCIATES
ARCHITECTS, P.C.
300 CHASE PARK SOUTH SUITE 200
HOOVER, ALABAMA 35244
PHONE: 205 988-9112

PROJECT: NEW ADDITION AND RENOVATION FOR RUSSELLVILLE HIGH SCHOOL PACKAGE 'B' RENOVATIONS TO VOCATIONAL BUILDING	PROJECT NO. 19-90B	REFERENCE: ADDENDUM #7
ARCHITECTURAL SUPPLEMENTAL DRAWING DRAWING REVISIONS TO ORIGINAL SHEET NO. A2.1	DATE: 8/1/22	SHEET NO. ASD 7.2 2 OF 2