



CITY OF PANAMA CITY BEACH
September 8, 2023

ADDENDUM NO. #3

**PCB23-48 ITB
FIRE STATION #32**

This addendum modifies Fire Station #32 Bid Documents dated August 1, 2023

Questions:

1. Sheet A5.1 calls for "6 Electrical Winches for hose lift system see specs". No specs have been provided

A. Disregard spec reference. Winches will be specified at a later date and are intended to be provided as part allowance Bid Item #3.
2. Sheet A1.1B Equipment Schedule #11. Wall Mtd. TV by Contr. See spec. Please provide a spec

A. Revise equipment designation for Conference Room 107 TV from #11 to #10. All TV's will be specified at a later date and are intended to be provided as part allowance Bid Item #4.
3. The specs list Impact Resistant wallboard in "High Traffic areas indicated". Which areas are considered "High Traffic"?

A. No high traffic areas are indicated, IR wall board is not required.
4. Sheet C1.5C shows one roof drain connection to one downspout. Sheet A1.1A shows fourteen downspout locations. Please advise.

A. Please see attached revised sheet C1.5 depicting all roof drain connections.
5. Sheet C2.7 calls for LBR 40 under the asphaltic pavement. Is LBR 40 required under the concrete pavement?

A. Yes, LBR 40 is required.

6. Please provide the power requirements for the master arm assembly traffic light. Please provide Panel schedule, breaker size, and conduit wire size for the master arm assembly traffic light.
 - A. 1. Provide 30/1 breaker in Panel-A (Circuit #26) for traffic control cabinet power requirements. Coordinate actual requirements with signal provider identified in FDOT ROW plans.
 2. Route one 1-inch conduit with 2#8, 1#10gnd conductors to traffic control cabinet via pull boxes as indicated on FDOT plans Sheet #3. The approximate length of conduit run from Panel-A to first traffic control pull box is 180 feet. Conductor run lengths shall be configured to utilize pull box system as indicated on FDOT ROW plans (Sheet #3).
 - 3 Routing for signal input for fire station dispatch requirements identified on Sheet E1.1 (Note-1) shall be connected to traffic control signal pull box system identified on provided FDOT ROW plans (Sheet #3). Conductor requirements for signaling shall be coordinated with FDOT signal provider.
 4. All conduit routing and connection requirements are to be coordinated with FDOT ROW plans provided.

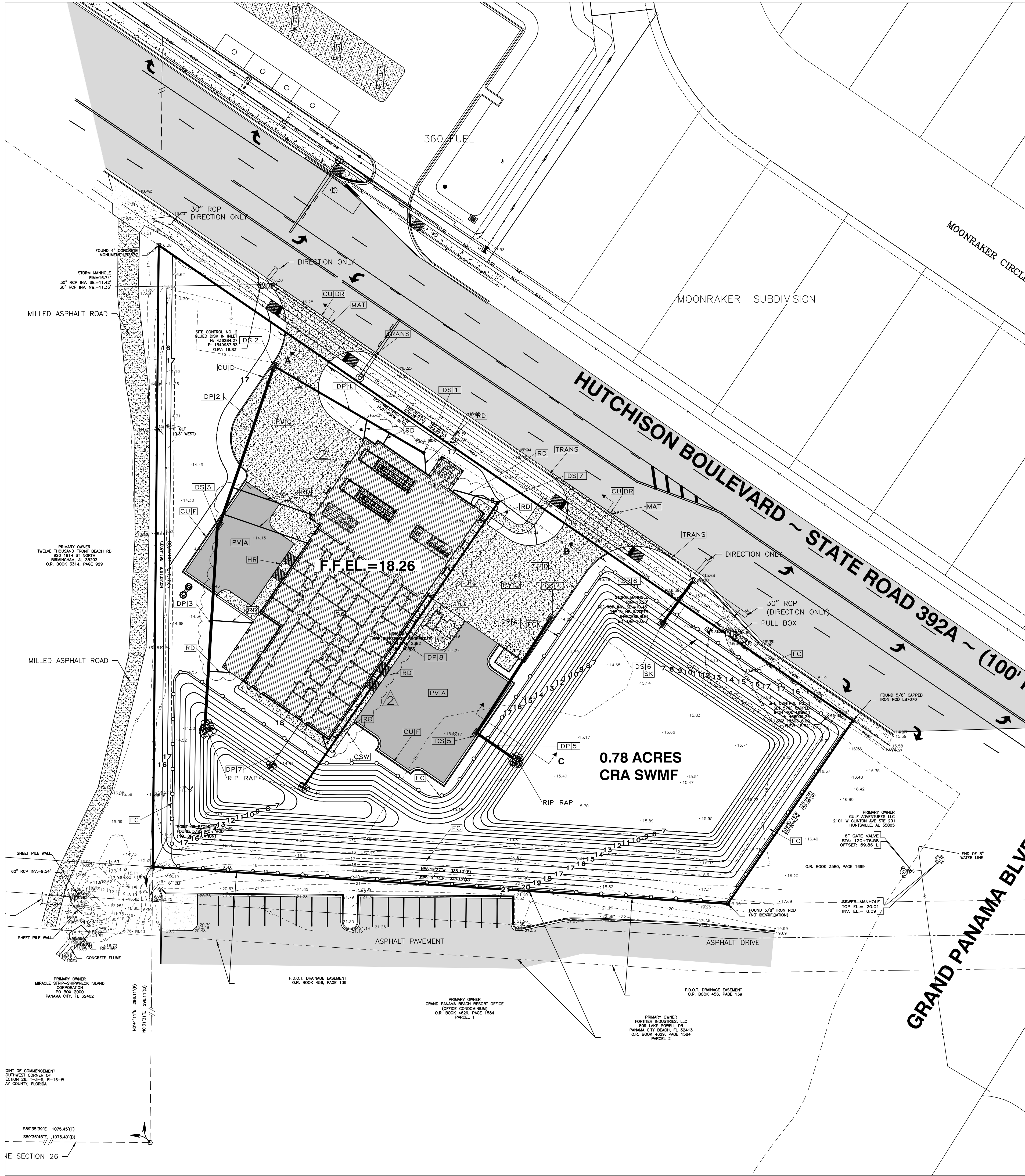
Revisions:

7. Electrical Drawing Sheet E7.1:

Revise all references to the concrete fuel tank from 1000 Gallons to 1300 Gallons.

END OF ADDENDUM

Attachments: (1) – Revised Sheet C1.5



SITE GRADING AND DRAINAGE DRAWING NOTES:

1. SEE SYMBOL LEGEND ON THIS SHEET FOR SYMBOL INFORMATION AND REFERENCED DETAILS.
2. ALL DEMOLISHED MATERIALS (i.e., SIGNS, CONCRETE, ASPHALT, ETC...) TO BE REMOVED AND DISPOSED OF IN A LEGAL MANNER. ALL EXISTING MONITORING WELLS ARE NOT TO BE REMOVED. WELLS IN PAVEMENT SHALL HAVE A MANHOLE LID INSTALLED.
3. SEE SECTIONS IN CONSTRUCTION DETAILS.
4. ALL DRAINAGE PIPES TO BE DEDICATED TO THE CITY OF PANAMA CITY BEACH SHALL BE VIDEO RECORDED AND PLACED ON A DIGITAL MEDIA (NO TAPES). VIDEO MUST BE REVIEWED AND APPROVED BY THE CITY.
5. PROPOSED FINISHED FLOORS SHALL BE 1 FOOT (MIN.) ABOVE ROADWAY CENTERLINE.
6. CONTRACTOR SHALL PROVIDE McNEIL CARROLL ENGINEERING, INC. FIVE (5) SETS AND ONE (1) DIGITAL COPY (AUTOCAD FORMAT) OF AS-BUILT DRAWINGS OF THE COMPLETED PROJECT. DRAWINGS SHALL BE PREPARED AND SIGNED & SEALED BY A FLORIDA REGISTERED SURVEYOR.
7. IT IS THE CONTRACTORS RESPONSIBILITY TO CALL SUNSHINE ONE AT 811 FOR UTILITY LOCATES PRIOR TO CONSTRUCTION.
8. ALL DISTURBED AREAS SHALL BE RESTORED TO ORIGINAL CONDITION AND SODDED PER FDOT INDEX 105.

SYMBOL LEGEND

- 34.60 (EXISTING SPOT ELEVATION)
- 3.6 (EXISTING CONTOUR)
- +12.50 (PROPOSED FINISHED GRADE)
- (STORMWATER SURFACE FLOW)
- CSW (CONCRETE SIDEWALK - SEE CONSTRUCTION DETAILS)
- CUID (F.D.O.T. CURB i.e., TYPE F - SEE CONSTRUCTION DETAILS)
- CUIF (F.D.O.T. CURB i.e., TYPE F - SEE CONSTRUCTION DETAILS)
- CUIDR (F.D.O.T. CURB i.e., TYPE F - SEE CONSTRUCTION DETAILS)
- DP16 (SEE DRAINAGE PIPE SCHEDULE THIS SHEET i.e., #16)
- DS12 (SEE DRAINAGE STRUCTURE SCHEDULE THIS SHEET i.e., #12)
- FC (CHAINLINK FENCE - SEE CONSTRUCTION DETAILS)
- HR (5' WIDE HANDICAP RAMP i.e., 12:1 SLOPE)
- PVIA (ASPHALT PAVEMENT - SEE CONSTRUCTION DETAILS)
- PVLC (CONCRETE PAVEMENT - SEE CONSTRUCTION DETAILS)
- MAT (MATCH PROPOSED FLUSH WITH EXISTING SURFACE)
- N11 (SEE NOTE i.e., #1 - SEE NOTES THIS SHEET)
- RD (ROOF DRAIN CONNECTION - SEE CONSTRUCTION DETAILS)
- SA (SEE ARCHITECTURAL PLANS)
- SWMF11 (SEE STORM WATER MANAGEMENT FACILITY SCHEDULE THIS SHEET)
- SK (SKIMMER - SEE CONSTRUCTION DETAILS)
- TRANS (TRANSITION CURB 3')

DRAINAGE PIPE SCHEDULE				
NO.	SIZE	LF	TYPE	SLOPE
DP1	12"	99	ADS	0.50%
DP2	18"	95	ADS	0.50%
DP3	18"	77	ADS	0.50%
DP4	18"	77	ADS	0.50%
DP5	18"	49	ADS	0.50%
DP6	18"	49	ADS	0.50%
DP7	3"	30	ADS	1.00%
DP8	12"	199	ADS	0.50%

ALL ADS PIPE SHALL BE AS SHOWN OR EQUAL
ALL PERFORATED PIPE SHALL HAVE A GRAVEL PACK
ALL ADS PIPE SHALL BE RATED N-12
SEE CONSTRUCTION DETAILS.

STORM WATER MANAGEMENT FACILITY SCHEDULE				
NO.	Basin Area	Top of Bank Elev.	Side Slope	Bottom Elev.
SWMF1	0.75 AC.	EL. 17.00	3 TO 1	EL. 7.00

SEE SITE LAYOUT PLAN FOR DIMENSIONS

DRAINAGE STRUCTURE SCHEDULE				
NO.	TYPE STRUCTURE	Top of Grate	Pipe Invert	Slot Invert
DS1	24" ADS BASIN	EL. 17.50	EL. 14.50	EL.
DS2	FDOT TYPE C INLET	EL. 17.00	EL. 13.50	EL.
DS3	FDOT TYPE C INLET	EL. 17.00	EL. 13.00	EL.
DS4	FDOT TYPE C INLET	EL. 17.00	EL. 13.50	EL.
DS5	FDOT TYPE C INLET	EL. 17.00	EL. 13.11	EL.
DS6	FDOT TYPE C INLET W/3" SLOT	EL. 17.00	EL. 14.50 N	EL. 15.00
DS7	24" ADS BASIN	EL. 17.50	EL. 14.50	EL.

SEE CONSTRUCTION DETAILS.
2. SUMP UNLESS OTHERWISE NOTED.

STORMWATER OPERATION AND MAINTENANCE SCHEDULE

AFTER EACH RAINFALL EVENT

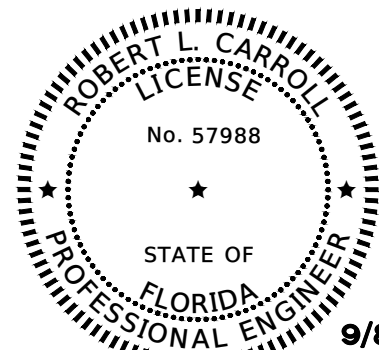
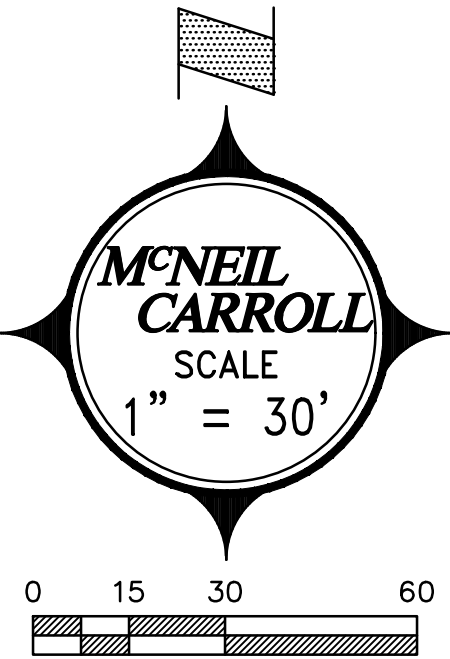
1. PAVEMENT AREAS: CLEAN/SWEEP DEBRIS AND DIRT FROM PAVEMENT AREAS.
2. SEDIMENTS IN RETENTION/DETENTION AREAS: REMOVE IMMEDIATELY.
3. DEBRIS IN RETENTION/DETENTION AREAS: ALL DEBRIS AND FOREIGN MATERIAL SHALL BE REMOVED IMMEDIATELY.
4. YARD INLETS, CATCH BASINS, ETC.: ALL DEBRIS AND FOREIGN MATERIALS SHALL BE REMOVED IMMEDIATELY.

PERIODIC POND/SYSTEM MAINTENANCE

1. CLEANING/ SWEEPING OF PAVEMENT AREAS SHALL BE ACCOMPLISHED WEEKLY OR AS REQUIRED.
2. INSPECT POND AT LEAST TWICE A MONTH FOR ACCUMULATION OF TRASH AND DEBRIS AND REMOVE UPON DISCOVERY. UPON ANY DISCOVERY OF TRASH AND DEBRIS ACCUMULATION, REMOVE AT ONCE.
3. MOWING AND LANDSCAPING MAINTENANCE SHOULD BE DONE ON A MONTHLY BASIS DURING THE ACTIVE GROWING SEASON FOR THIS AREA. INSPECT AND MAINTAIN AS REQUIRED DURING THE GROWING SEASON.
4. WEEDS OR UNDESIRABLE GROWTH SHALL BE REMOVED UPON DISCOVERY.
5. ALL STORMWATER STRUCTURES AND PIPES BASINS SHALL BE FLUSHED AS NECESSARY.
6. THE OWNER SHALL RE-GRADE AND RE-STABILIZE SWALE/ RETENTION/ DETENTION AREAS AS REQUIRED TO MAINTAIN THE APPROVED DESIGN, CROSS-SECTIONS, GRADES, ETC.
7. REMOVE SEDIMENT FROM POND WHEN ACCUMULATION REACHES TWO (2) INCHES. MEASUREMENTS FOR ACCUMULATION SHALL BE PERFORMED EVERY SIX MONTHS AND AFTER EACH MAJOR STORM EVENT.

INSPECTIONS

1. A MAINTENANCE INSPECTION SHALL BE PERFORMED AT MINIMUM EVERY FIFTH YEAR BY A REGISTERED PROFESSIONAL. THE INSPECTOR SHALL BE WORKING UNDER THE CHARGE OF A LICENSED PROFESSIONAL ENGINEER.
2. THE MAINTENANCE INSPECTION SHALL BE DOCUMENTED ON THE FDEP AND/OR NWFWM STANDARD INSPECTION FORM 62-330-311 (1).
3. THE INSPECTION SHALL BE SIGNED, SEALED AND DATED BY THE REGISTERED PROFESSIONAL AND SUBMITTED TO EITHER THE FDEP OR NWFWM WITHIN 30 DAYS OF THE INSPECTION.
4. THE INSPECTION MUST BE CONDUCTED USING THE PLANS, CALCULATIONS AND SPECIFICATIONS APPROVED BY THE FDEP AND/OR NWFWM.
5. THERE MUST BE AN INSPECTION COMPLETED BY A REGISTERED PROFESSIONAL ONE YEAR AFTER THE CONVERSION INTO OPERATION.



Robert L. Carroll, P.E.
PROFESSIONAL ENGINEER
FL. LC # 57988

REVISIONS

NO.	DESCRIPTION	DRAWN	CHECKED	DATE
01	UPDATED ROOF DRAIN LOCATIONS			09/08/23

PHASE

	DRAWN	CHECKED	DATE
SCHEMATIC DESIGN			03/09/23
95% DOCUMENTS			03/31/23
CONSTRUCTION DOCUMENTS			05/10/23
BID DOCUMENTS			08/01/23



2211 THOMAS DR. , STE 100
PANAMA CITY BEACH, FL
PHONE: (850) 236-9832
Commission Number: 21804



17800 Panama City Beach Parkway
Panama City Beach, Florida 32413
Phone: 850-234-1730
Fax: 850-234-1731
Professional Engineering Consultants
STATE OF FLORIDA CERTIFICATE OF AUTHORIZATION NUMBER 7288

PROJECT:

PANAMA CITY BEACH
FIRE STATION #32
HUTCHISON BLVD

BAY COUNTY, FLORIDA

SHEET TITLE:

SITE DRAINAGE PLAN

SHEET NUMBER:

C1.5C