

**ADDENDUM NO. 3
IRONDALE PUBLIC LIBRARY**

BIDS RECEIVED:

TIME: 2:00pm

DATE: February 15, 2024

Irondale Library Meeting Room

CITY OF IRONDALE

THIS ADDENDUM IS DIRECTED TO ALL PRIME BIDDERS, AND ALL OTHERS TO WHOM DRAWINGS AND SPECIFICATIONS HAVE BEEN ISSUED.

THIS ADDENDUM FORMS A PART OF THE CONTRACT DOCUMENTS. THE FOLLOWING CONDITIONS TAKE PRECEDENCE OVER ANY CONFLICTING CONDITIONS IN THE DRAWINGS AND SPECIFICATIONS. THE DRAWINGS AND SPECIFICATIONS ARE HEREBY AMENDED IN THE FOLLOWING PARTICULARS.

GENERAL

1. Due to a conflict, the Bid Opening will be held at the Irondale Library, in the meeting room where the Pre-Bid Meeting was held.

DRAWINGS

1. Sheet A4.12 and A4.13:
 - a. Reprinted sheets due to a text printing error
 - b. Corner guards shown, Keynote Legend shown, and finish designations on plans

SPECIFICATIONS

1. Section 10 28 00 – Toilet, Bath & Laundry Accessories
 - a. Replace with attached specification. Edited to remove extra accessories.
 - b. Modified mirrors for Rm 202A and 202B.
2. Section 07 46 19 Steel Soffits & Siding
 - a. Add Dynamic Custom Metal Fabricators N'Vee planks as acceptable substitution.
3. Section 08 11 16
 - a. Add Coral FL200 System as approved for interior storefront
 - b. Remove requirement for STC 35

REQUEST FOR INFORMATION/CLARIFICATIONS

1. Will City of Irondale permit fees be waived?
Response: No, permit fees will not be waived.
2. Light duty paving is shown going into the dumpster pad. Shouldn't this be heavy duty?
Response: Heavy duty pavement should be used for the asphalt paving to the dumpster pad, plans will be updated to indicate this.
3. On the undercut allowances are we to include the undercut mentioned in the geotechnical report in addition to the 6,000CY undercut allowance? Or is the 6,000 CY undercut allowance intended to cover the undercut mentioned in the Geotech report?
Response: Include undercut in geotechnical report in addition to the 6,000 CY allowance.

4. The civil plans note the site to be bid as unclassified excavation, but they are also asking for an undercut allowance of 6000 CY. Are we to bid unclassified or classified with the undercut allowance?
Response: Undercut is to be bid as unclassified.
5. Response to Addendum #2, response to Question 6. We understand that ACP-2 will not be required in the Childrens area, and that ACP-2 has been eliminated from the project. However there are still clouds shown in the childrens room. Will ceiling clouds still be required, or is the only required ceiling ACT-1?
Response: The "clouds" being referred to are light fixtures. See electrical sheet E201, light fixtures P3, P4, P5, P6, P7, and P8.
6. On page A6.02 the north elevation of the building is greyed out, is there a certain reason for this?
Response: This is a graphic error. Elevation should not be greyed out.
10. In the Interior Aluminum Door and Frames spec section. Section 2.2 refers to "STC 35" requirement; is this a requirement for all of the wood doors with the aluminum frames?
Response: STC 35 rating not required.
11. Spec section 08 11 16 for Interior Aluminum Door Frames and spec mentions a sliding door; are sliding doors part of the project? Please advise of location.
Response: No sliding doors as part of this project.
12. Exterior openings A, B, F, G & H: Acceptable to provide Kawneer Trifab 451T – 2" x 4.5" Thermal Storefront system?
Response: Yes
13. For all other exterior openings, is it acceptable to provide Kawneer 1600 System 1 – 2-1/2" x 6" Curtainwall System in lieu of Kawneer Series 2250 LR 2-1/4" x 5" Wall System as specified in Curtainwall Spec 08 44 13.
Response: Acceptable
14. Please allow for steel companies to bid on this project that follow AISC requirements but are not AISC certified. This will help with more competitive pricing for the steel.
Response: This is acceptable.
15. Spec 102600 does not show the length of the corner guards to be used. Floor plans A2.01, A2.10 & A2.11 do not show corner guard locations. Are we to assume corner guards will be required at all outside corners.
Response: Provide 5'-0" tall guards, mounted 6" above floor. See attached re-issued sheets A4.12 and A4.13.
16. Are the boxes near the sink in Restrooms 202A and 202B hand dryers. Will there be hand dryers in bathrooms 110 & 214.
Response: Those are labeled as "PTD" (Paper towel dispensers). They are not hand dryers. A paper towel dispenser should also be provided in 110 & 214. Provide a total of (6) six paper towel dispensers.
17. Gabion Wall. Is there a spec for the gabion wall? Is it acceptable to present an alternate for a segmental wall?
Response: Gabion wall is to be engineered by provider. Segmental wall is not acceptable
18. Is landscape irrigation be required on this project? One of the subcontractors noticed there is an irrigation spec section but did not see it called out on the plans. Please advise.
Response: Irrigation was included in our submitted set, Sheets L3.01-L3.03
19. Is there is a binder and surface included in these thicknesses?
Response: The binder and surface layers are described in the geotech report, I am attaching that page. For the parking lot, it is 2" of wearing surface asphalt, and for the driveway and dumpster access (described as "Medium Duty"), it is 2" of binder asphalt and 1" of wearing surface asphalt.
20. Will camera of the new sanitary sewer lateral to the main connection be required?

Response: JCESD will require a leak test, which involves filling the line with water and looking for changes in the water level over a period of time. But camera of lateral is not required.

END OF ADDENDUM NO. 3

Attachment 1: Pre-Bid Meeting Notes and Sign-In Sheet

Attachment 2: Specification 10 28 00 Toilet & Bath Accessories

Attachment 3: Sheets A4.12 and A4.13





Charles Williams
& Associates, Inc
ARCHITECTS

3601 8TH AVE. SOUTH
BIRMINGHAM, ALABAMA 35222
PH: 205-250-0700
FAX: 205-250-0515

February 1, 2024
Pre-Bid Meeting Notes

Project Name: Irondale Public Library
Project No: CWA Project No. 2022-08

The below information was presented and discussed at a non-mandatory Pre-Bid Conference on February 1, 2024 at 2:00pm at the Irondale City Hall.

1. Introductions: Reminder for all to sign in for proof of attendance
 - a. OWNER: **CITY OF IRONDALE**
Mayor James Stewart, jstewart@cityofirondaleal.gov

PROGRAM MANAGER: **KEMP MANAGEMENT SOLUTIONS, LLC.**
Keltin Garrett, kgarrett@kempms.net
Hugh Stewart, hstewart@kempms.net
Julian Grant, jgrant@westreemline.com
 - b. ARCHITECT: **CHARLES WILLIAMS AND ASSOCIATES**
(205) 250-0700 x 103
Christa Vandiver, Project Architect, christa@cwiliams-arch.com
 - c. STRUCTURAL ENGINEER: **MBA Structural Engineers**
(205) 862-0512
Keith Owens, P.E., Structural Engineer, kowens@mbasei.com
 - d. CIVIL ENGINEER: **SARCOR**
(205) 706-8170
Jeff Havercroft, jeff@sarcorllc.com
 - e. LANDSCAPE ARCHITECT: **RENTA URBAN & LANDSCAPE DESIGN**
(205) 545-7639
Tony Renta, tony@renta-uld.com
 - f. MECHANICAL, PLUMBING & FIRE PROTECTION: **DEWBERRY ENGINEERING**
(205) 988-2069
Adam Cone, acone@Dewberry.com (Mechanical)
Jacob Cicero, jcicero@dewberry.com (Plumbing)
 - g. ELECTRICAL: **CCE**
(205) 352-2500
Wade Parker, owparker@cce-eng.com
Jason Blocker, jblocker@cce-eng.com
2. General Introductions of Attendees. See Sign-In sheet.
3. Bidding Information:

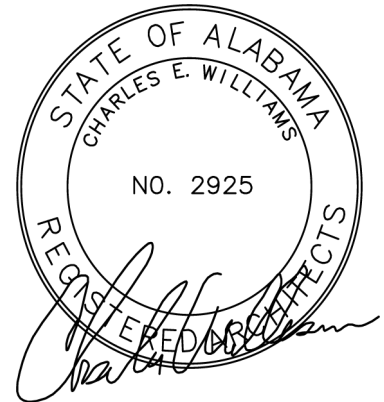
- a. Bid Time, Date and Place: Bid Opening to be held at **2:00pm** on **February 15th** . Same location as the Pre-Bid Conference (The Irondale Library Meeting Room).
 - b. If mailing, or hand delivering, Bid Proposals to the City of Irondale they must be addressed to Mayor James Stewart, 101 20th Street South, Irondale, AL 35210 and the Bid Proposal clearly marked on the envelope.
 - c. Any Request For Information (RFI's) must be issued in writing to the Architect no later than **3 working days** prior to bid (**2:00pm on 2/12**). Verbal questions will not be addressed, and verbal responses to questions will not be given by the Architect. Responses will be issued via Addendum. Send email to christa@cwilliams-arch.com for all RFI's.
 - d. Product Substitution request must be made **7 calendar days** prior to Bid Date. Approval of substitution request will be given via Addendum. Cutoff date for prior approval request is **2/8**. Send email to christa@cwilliams-arch.com for all substitution requests. Submit request on CSI Substitution Request for Bidding form. Available upon request in pdf format.
 - e. It is the Architect's intent to not issue any Addendum after **2/13**.
 - f. **This is a Tax Exempt job.** Taxes must be submitted with bids on the Form included in the Project Manual.
 - g. Owner is responsible for payment of testing agency(ies), if any required.
 - h. General Contractor is responsible for City of Irondale permit fees and Jefferson County Sewer Permit and impact fees.
4. Description of Building:
- Project Location: 1032 Grants Mill Road
Irondale, AL 35210
 - Construction Summary:
 - New Construction of a new one-story library plus related HVAC, electrical, civil work.
 - Exterior materials include brick, cast stone, precast, and limited EIFS.
 - Pitched roofs are metal standing seam; low slop roof is PVC
 - Gross SF: 16,345 SF
 - Construction durations: 420 days
5. Project Site Considerations:
- a. Site has construction debris from previous structures/projects. All construction debris will be removed unless otherwise stated in the documents.
6. Allowances:
- a. Allowance No. 1 - General Contingency = \$350,000.00
 - b. Allowance No. 2- General Excavation undercut and Replacement (6000 CY)
 - i. This is in addition to any rock, masonry, or concrete excavation called to be removed in the contract documents.
 - c. Allowance No. 3- Rock, Masonry, or concrete excavation in Trenches and Pits (100 CY)
 - i. This is in addition to any rock, masonry, or concrete excavation called to be removed in the contract documents.
 - d. Reminder that Contractor is to include 10% overhead and profit separately, in Contractor's Base Bid, and not as part of the allowance. If there is unused allowance at the end of the project, the unused allowance will be returned and shall include 10% from the GC's overhead and profit.
7. Alternates: There are no Alternates at this time

8. Additional Discussion Items:
 - a. Drawings have been reviewed by the City of Irondale, comments are currently being addressed.
 - b. Note that this Pre-Bid Meeting was revised to be a Non-Mandatory meeting via Addendum 2.

End of Pre-Bid Meeting Agenda

SECTION 10 28 00

TOILET BATH & LAUNDRY ACCESSORIES



PART 1 – GENERAL

1.1 RELATED DOCUMENTS:

- A. Drawings and general provisions of Contract, including General and Supplementary Conditions and Division 1 Specification Sections, apply to this Section.

1.2 SUMMARY:

- A. The extent of toilet and other accessory items is indicated on the Drawings, in this Section 10 28 00, and as follows:

- 1. Paper towel dispensers
- 2. Toilet tissue dispensers
- 3. Grab bars.
- 4. Soap dispensers
- 5. Mirrors (Single Toilets)
- 6. Mirrors (Gang Toilets)
- 7. Mop holder with shelf.
- 8. Sanitary napkin disposal
- 9. Baby changing station.

1.3 SUBMITTALS:

- A. General: Submit the following in accordance with Conditions of Contract and Division 1 Specifications Sections.

1. Product Data for each toilet accessory item specified, including details of construction relative to materials, dimensions, gauges, profiles, method of mounting, specified options, and finishes.
2. Setting Drawings: Where cutouts are required in other work, provide templates, substrate preparation instructions, and directions for preparing cutouts and for installation of anchorage devices.

1.4 QUALITY ASSURANCE:

- A. Inserts and Anchorages: Furnish inserts and anchoring devices that must be set in concrete or built into masonry; coordinate delivery with other work to avoid delay.
- B. Single-Source Responsibility: Provide products of same manufacturer for each type of accessory unit and for units exposed to view in same areas, unless otherwise acceptable to Architect.

1.5 PROJECT CONDITIONS:

- A. Coordination: Coordinate accessory locations, installation, and sequencing with other work to avoid interference and to assure proper installation, operation, adjustment, cleaning, and servicing of toilet accessory items.

1.6 WARRANTY:

- A. Special Project Warranty: Provide manufacturer's written 15-year warranty against silver spoilage of mirrors, agreeing to replace any mirrors that develop visible defects within warranty period.

PART 2 – PRODUCTS

2.1 ACCEPTABLE MANUFACTURERS:

- B. Manufacturers: Subject to compliance with requirements, provide toilet accessories by one of the following and which are equivalent to the units specified:
 1. Accessory Specialties, Inc.
 2. A & J Washroom Accessories.
 3. American Specialties, Inc. (ASI)

4. Bobrick Washroom Equipment, Inc.
5. Bradley Corporation.
6. General Accessory Manufacturing Co.
7. Georgia-Pacific [Basis of Design]

2.2 MATERIALS, GENERAL:

- A. Stainless Steel: AISI Type 302/304, with polished No. 4 finish, 22-gauge (.034-inch) minimum thickness, unless otherwise indicated.
- B. Brass: Leaded and unleaded, flat products, ASTM B 19; rods, shapes, forgings, and flat products with finished edges, ASTM B 16, Castings, ASTM B-30.
- C. Sheet Steel: Cold-rolled, commercial quality ASTM A 366, 20-gauge (.040-inch) minimum, unless otherwise indicated. Surface preparation and metal pretreatment as required for applied finish.
- D. Galvanized Steel Sheet: ASTM A 527, G60.
- E. Chromium Plating: Nickel and chromium electro-deposited on base metal, ASTM B 456, Type SC 2.
- F. Baked Enamel Finish: Factory-applied, gloss white, baked acrylic enamel coating.
- G. Mirror Glass: Nominal 6.0-mm (0.23-inch) thick, conforming to ASTM C 1036, Type I, Class 1, Quality q2, and with silvering, electro-plated copper coating, and protective organic coating. Provide with continuous edge sealer prior to installation in frame.
- H. Galvanized Steel Mounting Devices: ASTM A 153, hot-dip galvanized after fabrication.
- I. Fasteners: Screws, bolts, and other devices of same material as accessory unit or of galvanized steel where concealed.
- J. Keys: Unless otherwise indicated, provide universal keys for access to toilet accessory units requiring internal access for servicing, resupply, etc. Provide minimum of 6-keys to Owner's representative and obtain receipt.

2.3 NOT USED

2.4 PAPER TOWEL DISPENSERS:

- A. Surface-mounted towel dispensers: Fabricate of stainless steel sized to dispense not less than 400 C-fold or 525-multi-fold paper towels without use of special adapters, door equipped with tumbler lockset. [verify]
- B. Manufacturer/Model No.:
 - 1. ASI No. 0210.
 - 2. Bobrick No. B-262.
 - 3. Bradley No. 250-15.
- C. Mounting Height: 3'-4" A.F.F. to towel dispensing opening.
- D. Location: Where indicated on the Drawings.

2.5 TOILET TISSUE DISPENSERS:

- A. Double-Roll Dispenser: Size to accommodate two separate rolls of core type tissue to 5-inch diameter.
 - 2. Controlled delivery not permitted.
 - 3. Semi-recessed type required at toilet stalls for the disabled and handicapped.
- B. Fabrication: Molded plastic spindle with semi-recessed satin finished stainless steel housing at walls, and satin finished cast aluminum at toilet partition walls.
- C. Manufacturer/Model No.: Surface Mounted:
 - 1. Bradley Model No.: 5234 [Basis of Design]
- D. Mounting:
 - 1. 1'-7" A.F.F., to horizontal centerline.
 - 2. 36-inches from wall behind toilet fixture to forward edge.
- E. Locations: At each toilet fixture.

2.5 GRAB BARS:

- C. Stainless Steel Type: Provide 1-1/2-inches outside diameter heavy-duty grab bars with wall thickness not less than 18-gauge (.050-inch) and as follows:
1. Mounting: Concealed, manufacturer's standard flanges and anchorages, with concealed mounting plate secured by four stainless steel vandal-resistant set screws.
 2. Clearance: 1-1/2-inches clearance between wall surface and inside face of bar.
 3. Gripping Surfaces: Manufacturer's standard nonslip texture.
 4. Locations, Size, and Configurations: As indicated on the Drawings.
 5. Manufacturer/Series No.:
 - a. ASI Series 3200 P.
 - b. Bobrick Series B-6806.99.
 - a. Bradley Series 812.
 6. Mounting Height: 2'-9" A.F.F., unless indicated otherwise, to horizontal centerline of bar.
 7. Provide lengths indicated on Drawings.

2.6 NOT USED**2.7 SOAP DISPENSERS:**

- A. Wall Mounted Liquid Soap Dispenser: Minimum 40-fluid ounce capacity dispenser.
1. Equip unit with push-type valve for dispensing soap in foam form.
- B. Location: 1-unit at each toilet room and other lavatory, at each counter sink, and as otherwise indicated.
- C. Manufacturer/Model No.:
1. Bradley No. 6A01-11 [Basis of Design]

D. Mounting Height: 40-inches A.F.F. to operating valve.

2.8 MIRROR UNITS (SINGLE TOILETS):

A. Stainless Steel Framed Mirror Units: Fabricate frame with angle shapes of not less than 18-gauge, with square welded corners mitered and ground smooth. Provide with No. 4 satin polished finish.

B. Locations: At each lavatory in each Toilet Room, and as otherwise indicated.

C. Mountings: Concealed type, manufacturer's standard.

D. Manufacturer/Model No.: Standard:

1. Bradley Series: 780 Series

2. Size:

b. 18" x 36" at Rooms 110 and 214

3. Mounting Height: 40-inches A.F.F. to bottom of mirror.

E. Mirror Types:

1. Provide ¼" (6mm) thick, float glass, triple silvered, electro-copper plated with baked enamel finish, at all other locations.

2.9 MIRROR UNITS (GANG TOILETS)

A. Provide two (2) in each restroom 202A and 202B

1. Basis of Design:

VISUAL COMFORT
Generation Lighting Collection
Planer Medium Rectangle Mirror
MR1304MBK
Size: 24" x 36"
Finish: Midnight Black

2.10 MOP HOLDER WITH SHELF:

A. Manufacturer/Model No:

1. ASI No. 1315.

2. Bobrick No. B-224 x 30-inches long.
 3. Bradley No. 9983.
- B. Mounting Height: 60-inches A.F.F. to top of shelf.
- C. Locations: 1-each at each Janitors Room, over mop sink, on opposite wall from plumbing.
- 2.11 NOT USED
- 2.12 NOT USED
- 2.13 NOT USED
- 2.14 SANITARY NAPKIN DISPOSAL:
- A. Manufacturer's standard stainless steel surface mounted sanitary napkin disposal as indicated on drawings form one of the following manufacturers:
1. Bradley: Model No. 4A11- partition mounted
 2. Bradley: Model No. 4A10- Surfaced mounted
- 2.15 WALL MOUNTED BABY CHANGING STATION:
- A. Provide baby changing station from one of the Manufacturer's listed below:
1. Bradley: Model No. 9611 [Basis of Design]
- B. Provide **three (3)** at the locations indicated on the Drawings
- 2.16 NOT USED
- 2.17 NOT USED
- 2.18 FABRICATION:
- A. General: Only a maximum 1-1/2-inch diameter, unobtrusive stamped logo of manufacturer, as approved by Architect, is permitted on exposed face of toilet or bath accessory units. On either interior surface not exposed to view or back surface, provide additional identification by means of either a printed,

- waterproof label or a stamped nameplate, indicating manufacturer's name and product model number.
- B. Surface-Mounted Toilet Accessories, General: Except where otherwise indicated, fabricate units with tight seams and joints, exposed edges rolled. Hang doors or access panels with continuous stainless steel piano hinge. Provide concealed anchorage wherever possible.
 - C. Recessed Toilet Accessories, General: Except where otherwise indicated, fabricate units of all welded construction, without mitered corners. Hang doors or access panels with full-length stainless steel piano hinge. Provide anchorage that is fully concealed when unit is closed.
 - D. Mirror Units, General: Provide mirror backing and support system that will permit rigid, tamper proof glass installation and prevent accumulation of moisture, as follows:
 - 1. Provide galvanized steel backing sheet, not less than 22-gauge (.034-inch) and full mirror size, with nonabsorptive filler material. Corrugated cardboard is not an acceptable filler material.
 - E. Mirror Unit Hangers: Provide system of mounting mirror units that will permit rigid, tamper proof, and theft proof installation, as follows:
 - 1. Heavy-duty wall brackets of galvanized steel, equipped with concealed locking devices requiring special tool to remove.

PART 3 – EXECUTION

3.1 INSTALLATION:

- A. Install toilet accessory units in accordance with manufacturers' current written instructions, using fasteners appropriate to substrate and recommended by manufacturer of unit. Install units plumb and level, firmly anchored in locations and at heights indicated.
- B. Secure mirrors to walls in concealed, tamper proof manner with special hangers, toggle bolts, or screws. Set units plumb, level, and square at locations indicated, in accordance with manufacturer's instructions for type of substrate involved.

3.2 ADJUSTING AND CLEANING:

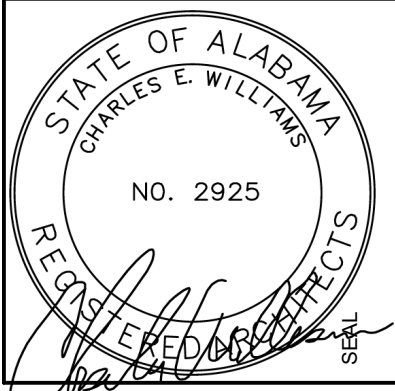
- A. Adjust toilet accessories for proper operation and verify that mechanisms function smoothly. Replace damaged or defective items.

- B. Clean and polish all exposed surfaces in strict accordance with manufacturer's recommendations after removing temporary labels and protective coatings.

END OF SECTION 10 28 00

THIS PAGE INTENTIONALLY LEFT BLANK

Revisions		
No	Date	Description
3	02.02.24	Addendum 3



100% CD's

IRONDALE PUBLIC LIBRARY

1032 GRANTS MILL RD
IRONDALE, AL 35210
CITY OF IRONDALE

CHARLES WILLIAMS
& ASSOCIATES
ARCHITECTS
CWA
3601 8TH AVE. SOUTH
BIRMINGHAM, ALABAMA 35222
PH: 205-250-0700
FAX: 205-250-0515

SHEET TITLE: FINISH PLAN - BLOCK A	
PROJECT NUMBER: 2022-08	
DATE: NOVEMBER 16, 2023	
DRAWN BY: JH	CHECKED BY: CSV

SHEET NUMBER

A4.12

FINISH PLAN GENERAL NOTES:

- SHADED AREAS ARE CONSIDERED NOT IN SCOPE.
- IN REFERRING TO THE FLOOR PLAN AND ROOM FINISH SCHEDULE, CLARIFICATION OF PROJECT NORTH IS AS INDICATED ON DRAWINGS.
- CONTRACTOR IS TO PROVIDE "ATTIC/ SURPLUS" STOCK AS NOTED IN THE SPECIFICATIONS. SURPLUS STOCK SHALL BE PROVIDED ON EACH DIFFERENT PRODUCT MANUFACTURER, STYLE, COLOR AND FINISH SPECIFIED.
- CONTRACTOR SHALL PROVIDE (1) SET OF PHYSICAL SAMPLE SUBMITTALS IN ADDITION TO DIGITAL SAMPLES TO DESIGNER. FOR APPROVAL PRIOR TO FABRICATING OR PURCHASING MATERIALS. ALL SUBMITTALS SHALL BE CLEARLY MARKED WITH MANUFACTURER, STYLE, COLOR AND CODE.

FLOORING:

- WHERE NEW FLOORCOVERING AND/OR BASE IS SPECIFIED, THE SAME FLOORCOVERING AND/OR BASE SHALL EXTEND INTO ANY CLOSETS, STORAGE AREAS, UNDER MILLWORK/CASEWORK, ETC. ADJACENT TO THAT SPACE UNLESS OTHERWISE NOTED.
- LEVELING COMPOUNDS, AS RECOMMENDED BY THE FLOORING MANUFACTURER, SHALL BE USED PRIOR TO INSTALLATION TO INSURE A LEVEL FLOOR. PROVIDE WALL AND/OR FLOOR PATCH WHERE EXISTING CONSTRUCTION IS DEMO'D. SURFACE TO BE SMOOTH AND LEVEL WITH ADJACENT SURFACES. PROVIDE FLOOR PATCH REPAIRS WHERE LARGE DIFFERENCES BETWEEN THE EXISTING FLOOR FINISHES. FINISH TO MATCH ADJACENT FINISH. ANY HIGH SPOTS ON FLOORING THAT REMAIN AFTER DEMOLITION TO BE GROUND DOWN TO THE LEVEL OF THE ADJACENT FLOOR FINISH. INSURE FLOOR IS PREPPED SO ANY DEFECTS OR BLEMISHES DO NOT TELESCOPE THROUGH NEW FLOOR COVERING.
- CARPET INSTALLATION SHALL BE TAC-TILE OR SIMILAR METHOD, USING MANUFACTURER'S RECOMMENDED ADHESIVE & INSTALLATION INSTRUCTIONS.
- AT DOORWAYS, CENTER SEAMS UNDER THE DOOR IN THE CLOSED POSITION. BEVEL ADJOINING BORDER EDGES AT SEAMS WITH HAND SHEARS. LEVEL ADJOINING BORDER EDGES. DO NOT BRIDGE BUILDING EXPANSION JOINTS WITH CARPET. PROVIDE TS (TRANSITION STRIPS) AS SPECIFIED WHEN FLOORING MATERIAL CHANGES. LOCATE AT CENTER OF DOOR WHEN IN CLOSED POSITION.
- CUT AND FIT CARPET TO BUTT TIGHTLY TO VERTICAL SURFACES, PERMANENT FIXTURES, AND BUILT-IN FURNITURE INCLUDING CABINETS, PIPES, OUTLETS, EDGINGS, THRESHOLDS & NOSINGS. BIND OR SEAL EDGES AS RECOMMENDED BY CARPET MANUFACTURER.
- EXTEND CARPET INTO TOE SPACES, DOOR REVEALS, CLOSETS, OPEN BOTTOMED OBSTRUCTIONS, REMOVABLE FLANGES, ALCOVES & SIMILAR OPENINGS.
- DO NOT INSTALL CUT CARPET PIECES SMALLER THAN 16 SQUARE INCHES OR CUT CARPET STRIPS LESS THAN 2" WIDE.

PAINTING:

- PRIOR TO THE APPLICATION OF PAINT, THE CONTRACTOR SHALL REPAIR NEW OR EXISTING SURFACES BY PATCHING, SMOOTHING AND SANDING AS NEEDED TO ACHIEVE A SURFACE ACCEPTABLE FOR THE APPLICATION OF NEW FINISH. REMOVE ALL SCREWS, FASTENERS, HOOKS ADHESIVES, AND UNUSED WIRE MOLD FROM WALLS, DOORS, AND DOOR FRAMES PREPARE DOOR FRAMES OR METAL SURFACES BY SANDING CHIPS/BURRS, FILLING DENTS WITH BONDO STANDARD SMOOTH PREPARED/PRIMED BEFORE PAINTING AND CAULKING CRACKS AT CORNERS AS REQUIRED.
- MISCELLANEOUS METAL (RETURN AND AIR SUPPLY GRILLES, EXPANSION JOINTS, ACCESS PANELS, ETC.) LOCATED ON WALL SURFACES SHALL BE PAINTED TO MATCH ADJACENT WALL COLOR.
- PAINT SOFFITS TO MATCH ADJACENT WALL COLOR UNLESS OTHERWISE SPECIFIED.
- PAINT ALL EXISTING DOORS ON "PROJECT SIDE" OF SEPARATION OF I/C PROJECT BARRIERS TO PER FINISH SCHEDULE. DO NOT PAINT CLEAR ANNOZEDD STOREFRONT FRAMING.
- TOUCH UP DOOR FRAMES AS REQUIRED AFTER FLOORING INSTALLATION.

RESILIENT BASE:

- ALL COVERED TOE RESILIENT BASE IS TO BE AS INDICATED IN THE FINISH SCHEDULE. COVERED AND FROM CONTINUOUS ROLLS. 6'-0" LENGTHS ARE NOT PERMITTED. INSIDE AND OUTSIDE CORNERS SHALL BE FORMED USING PREFORMED CORNERS. CUTS MIDWAY DOWN A WALL WILL NOT BE PERMITTED.
- APPLY TO BASE OF WALLS, COLUMNS, PILASTERS, CASEWORK & CABINETS IN TOE SPACES & OTHER PERMANENT FIXTURES IN ROOMS & AREAS WHERE BASE IS REQUIRED.
- INSTALL BASE IN LENGTHS AS LONG AS PRACTICAL WITHOUT GAPS AT SEAMS & WITH TOP OF ADJACENT PIECES ALIGNED.
- TIGHTLY ADHERE TO SUBSTRATES THROUGHOUT LENGTH OF EACH PIECE. WITH BASE IN CONTINUOUS CONTACT WITH HORIZONTAL & VERTICAL SUBSTRATES. DO NOT STRETCH MATERIAL DURING INSTALLATION.
- ON IRREGULAR SURFACES, SUCH AS CONCRETE OR MASONRY, FILL VOIDS ALONG TOP EDGE WITH MANUFACTURER'S RECOMMENDED ADHESIVE FILLER MATERIAL.

MISCELLANEOUS:

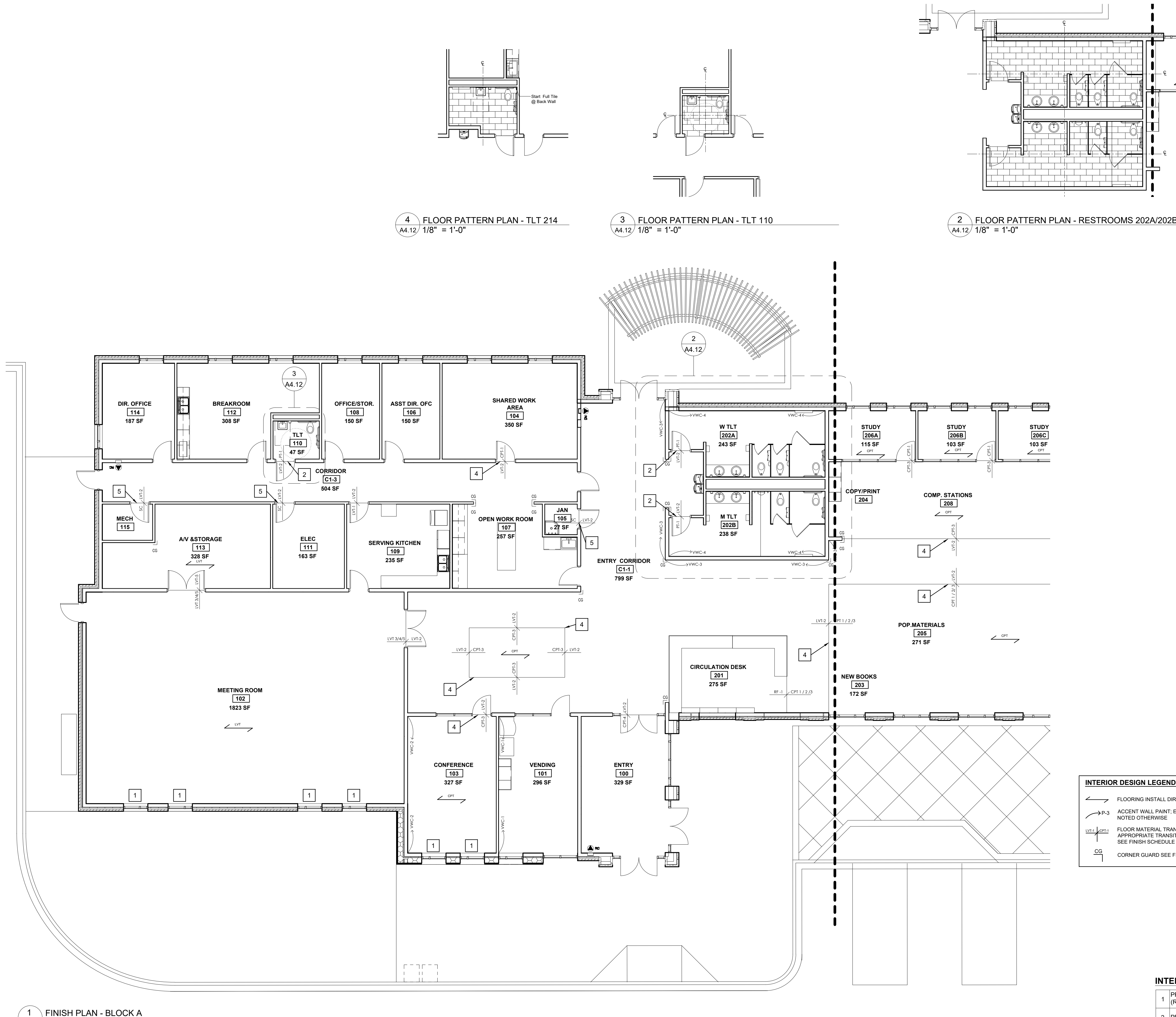
- CAULK BETWEEN MILLWORK AND WALL, COLOR TO MATCH ADJACENT WALL COLOR. CAULK JOINTS AT COUNTERTOP AND BACKSPLASH, COLOR TO MATCH COUNTERTOP PLASTIC LAMINATE.
- CAULK ALL DOOR FRAMES TO RESILIENT FLOORING; CAULK COLOR TO MATCH DOOR FRAME PAINT.
- PAINT ALL EXPOSED FIRE ALARM CONDUIT; FIRE PROTECTION, MECHANICAL AND PLUMBING PIPING, AND MECHANICAL DUCTWORK TO MATCH EXISTING ADJACENT CEILING.
- ALL FIRE ALARM JUNCTION BOXES TO BE PAINTED RED.

INTERIOR FINISH PLAN KEY NOTES

	#
1	PROVIDE NEW DOUBLE SYSTEM ROLLER SHADES (RS-1); SEE SCHEDULE FOR SPECIFICATION
2	PROVIDE TS-1 AT FLOORING TRANSITION
3	PROVIDE CT-3 FULL HEIGHT BEHIND EWC
4	PROVIDE TS-2 AT FLOORING TRANSITION
5	PROVIDE TS-3 AT FLOORING TRANSITION

INTERIOR DESIGN LEGEND

- FLOORING INSTALL DIRECTION
- ACCENT WALL PAINT, ENTIRE WALL UNLESS NOTED OTHERWISE
- FLOOR MATERIAL TRANSITION; PROVIDE APPROPRIATE TRANSITION STRIP; SEE FINISH SCHEDULE AND DETAILS
- CORNER GUARD SEE FINISH SCHEDULE

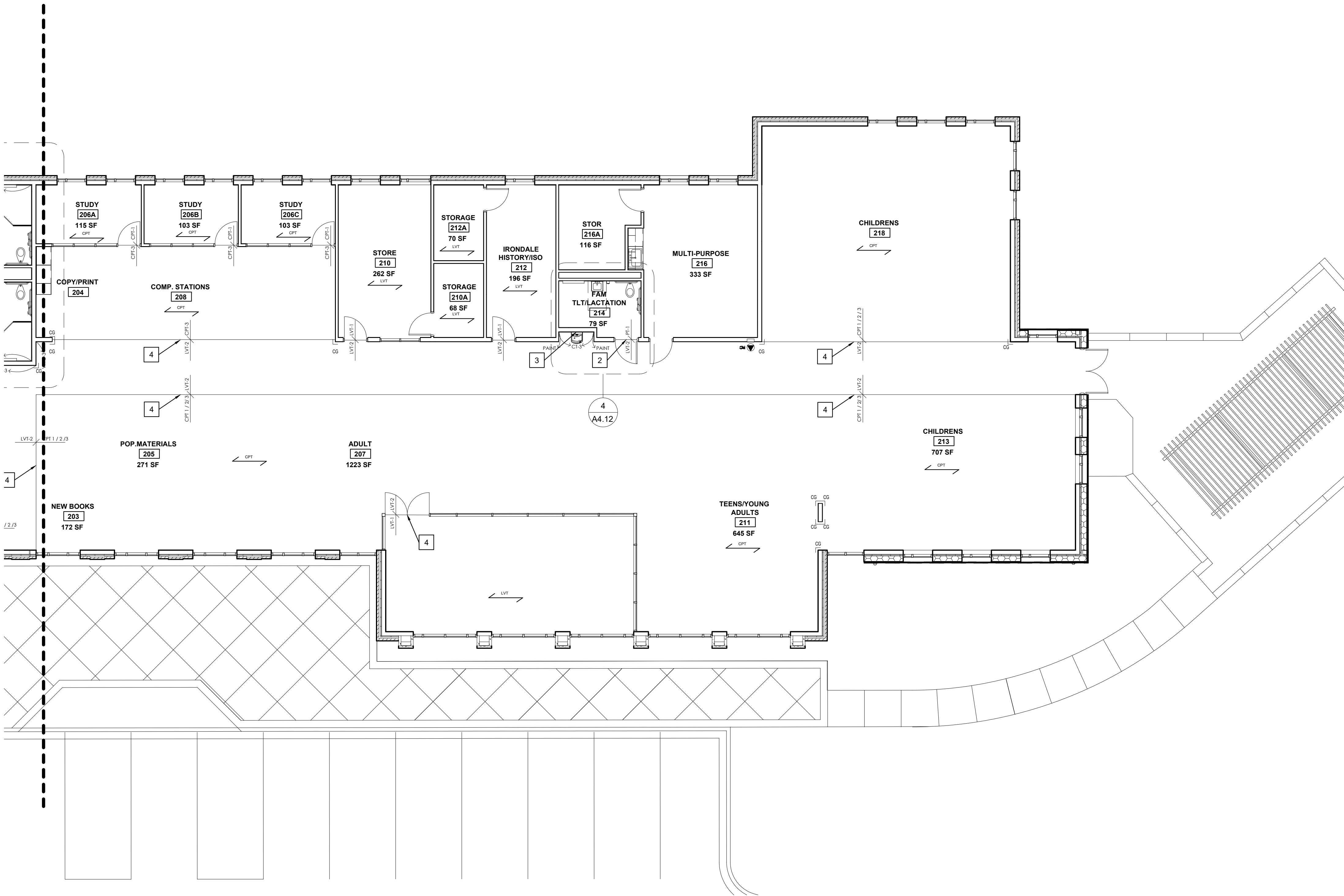


4 FLOOR PATTERN PLAN - TLT 214
A4.12 1/8" = 1'-0"

3 FLOOR PATTERN PLAN - TLT 110
A4.12 1/8" = 1'-0"

2 FLOOR PATTERN PLAN - RESTROOMS 202A/202B
A4.12 1/8" = 1'-0"

1 FINISH PLAN - BLOCK A
A4.12 1/8" = 1'-0"



1 FINISH PLAN - BLOCK B
A4.13 1/8" = 1'-0"

INTERIOR DESIGN LEGEND	
	FLOORING INSTALL DIRECTION
	ACCENT WALL PAINT; ENTIRE WALL UNLESS NOTED OTHERWISE
	FLOOR MATERIAL TRANSITION; PROVIDE APPROPRIATE TRANSITION STRIP; SEE FINISH SCHEDULE AND DETAILS
	CORNER GUARD SEE FINISH SCHEDULE

INTERIOR FINISH PLAN KEY NOTES

- 1 PROVIDE NEW DOUBLE SYSTEM ROLLER SHADES (RS-1); SEE SCHEDULE FOR SPECIFICATION
- 2 PROVIDE TS-1 AT FLOORING TRANSITION
- 3 PROVIDE CT-3 FULL HEIGHT BEHIND EVC
- 4 PROVIDE TS-2 AT FLOORING TRANSITION
- 5 PROVIDE TS-3 AT FLOORING TRANSITION

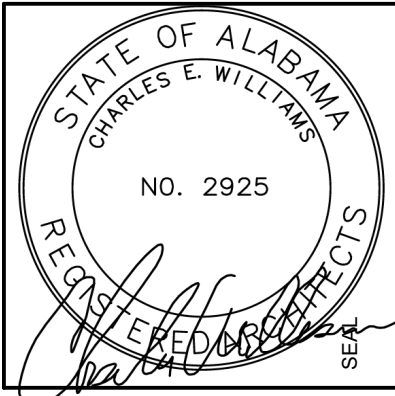
- FINISH PLAN GENERAL NOTES:**
1. SHADED AREAS ARE CONSIDERED NOT IN SCOPE.
 2. IN REFERRING TO THE FLOOR PLAN AND ROOM FINISH SCHEDULE, CLARIFICATION OF PROJECT NORTH IS AS INDICATED ON DRAWINGS.
 3. CONTRACTOR IS TO PROVIDE "ATTIC SURPLUS" STOCK AS NOTED IN THE SPECIFICATIONS. SURPLUS STOCK SHALL BE PROVIDED ON EACH DIFFERENT PRODUCT MANUFACTURER, STYLE, COLOR AND FINISH SPECIFIED.
 4. CONTRACTOR SHALL PROVIDE (1) SET OF PHYSICAL SAMPLE SUBMITTALS IN ADDITION TO DIGITAL SAMPLES TO DESIGNER FOR APPROVAL. PRIOR TO FABRICATING OR PURCHASING MATERIALS. ALL SUBMITTALS SHALL BE CLEARLY MARKED WITH MANUFACTURER, STYLE, COLOR AND CODE.

- FLOORING:**
1. WHERE NEW FLOORCOVERING AND/OR BASE IS SPECIFIED, THE SAME FLOORCOVERING AND/OR BASE SHALL EXTEND INTO ANY CLOSETS, STORAGE AREAS, UNDER MILLWORK/CASEWORK, ETC. ADJACENT TO THAT SPACE UNLESS OTHERWISE NOTED.
 2. LEVELING COMPOUNDS, AS RECOMMENDED BY THE FLOORING MANUFACTURER, SHALL BE USED PRIOR TO INSTALLATION TO INSURE A LEVEL FLOOR. PROVIDE WALL AND/OR FLOOR PATCH WHERE EXISTING CONSTRUCTION IS DEMO'D. SURFACE TO BE SMOOTH AND LEVEL WITH ADJACENT SURFACES. PROVIDE FLOOR PATCH REPAIRS WHERE LARGE DIFFERENCES BETWEEN THE EXISTING FLOOR FINISHES. FINISH TO MATCH ADJACENT FINISH. ANY HIGH SPOTS ON FLOORING THAT REMAIN AFTER DEMOLITION TO BE GROUND DOWN TO THE LEVEL OF THE ADJACENT FLOOR FINISH. INSURE FLOOR IS PREPARED SO ANY DEFECTS OR BLEMISHES DO NOT TELESCOPE THROUGH NEW FLOOR COVERING.
 3. CARPET INSTALLATION SHALL BE TAC-TILE OR SIMILAR METHOD, USING MANUFACTURER'S RECOMMENDED ADHESIVE & INSTALLATION INSTRUCTIONS.
 4. AT DOORWAYS, CENTER SEAMS UNDER THE DOOR IN THE CLOSED POSITION. BEVEL ADJOINING BORDER EDGES AT SEAMS WITH HAND SHEARS. LEVEL ADJOINING BORDER EDGES. DO NOT BRIDGE BUILDING EXPANSION JOINTS WITH CARPET. PROVIDE TS (TRANSITION STRIPS) AS SPECIFIED WHEN FLOORING MATERIAL CHANGES. LOCATE AT CENTER OF DOOR WHEN IN CLOSED POSITION.
 5. CUT AND FIT CARPET TO BUTT TIGHTLY TO VERTICAL SURFACES, PERMANENT FIXTURES, AND BUILT-IN FURNITURE INCLUDING CABINETS, PIPES, OUTLETS, EDGINGS, THRESHOLDS & NOSINGS. BIND OR SEAL EDGES AS RECOMMENDED BY CARPET MANUFACTURER.
 6. EXTEND CARPET INTO TOE SPACES, DOOR REVEALS, CLOSETS, OPEN BOTTOMED OBSTRUCTIONS, REMOVABLE FLANGES, ALCOVES & SIMILAR OPENINGS.
 7. DO NOT INSTALL CUT CARPET PIECES SMALLER THAN 16 SQUARE INCHES OR CUT CARPET STRIPS LESS THAN 2" WIDE.

- PAINTING:**
1. PRIOR TO THE APPLICATION OF PAINT, THE CONTRACTOR SHALL REPAIR NEW OR EXISTING SURFACES BY PATCHING, SMOOTHING AND SANDING AS NEEDED TO ACHIEVE A SURFACE ACCEPTABLE FOR THE APPLICATION OF NEW FINISH. REMOVE ALL SCREWS, FASTENERS, HOOKS ADHESIVES, AND UNUSED WIRE MOLD FROM WALLS, DOORS, AND DOOR FRAMES. PREPARE DOOR FRAMES OR METAL SURFACES BY SANDING CHIPS/BURRS, FILLING DENTS WITH BONDO STANDARD SMOOTH PREPARED/PRIMED BEFORE PAINTING AND CAULKING CRACKS AT CORNERS AS REQUIRED.
 2. MISCELLANEOUS METAL (RETURN AND AIR SUPPLY GRILLES, EXPANSION JOINTS, ACCESS PANELS, ETC.) LOCATED ON WALL SURFACES SHALL BE PAINTED TO MATCH ADJACENT WALL COLOR.
 3. PAINT SOFFITS TO MATCH ADJACENT WALL COLOR UNLESS OTHERWISE SPECIFIED.
 4. PAINT ALL EXISTING DOORS ON "PROJECT SIDE" OF SEPARATION OF NIC / PROJECT BARRIERS TO PER FINISH SCHEDULE. DO NOT PAINT CLEAR ANODIZED STOREFRONT FRAMING.
 5. TOUCH UP DOOR FRAMES AS REQUIRED AFTER FLOORING INSTALLATION.

- RESILIENT BASE:**
1. ALL COVED TOE RESILIENT BASE IS TO BE AS INDICATED IN THE FINISH SCHEDULE. COVED AND FROM CONTINUOUS ROLLS. 6'-0" LENGTHS ARE NOT PERMITTED. INSIDE AND OUTSIDE CORNERS SHALL BE FORMED USING PREFORMED CORNERS. CUTS MIDWAY DOWN A WALL WILL NOT BE PERMITTED.
 2. APPLY TO BASE OF WALLS, COLUMNS, PILASTERS, CASEWORK & CABINETS IN TOE SPACES & OTHER PERMANENT FIXTURES IN ROOMS & AREAS WHERE BASE IS REQUIRED.
 3. INSTALL BASE IN LENGTHS AS LONG AS PRACTICAL WITHOUT GAPS AT SEAMS & WITH TOP OF ADJACENT PIECES ALIGNED.
 4. TIGHTLY ADHERE TO SUBSTRATES THROUGHOUT LENGTH OF EACH PIECE. WITH BASE IN CONTINUOUS CONTACT WITH HORIZONTAL & VERTICAL SUBSTRATES. DO NOT STRETCH MATERIAL DURING INSTALLATION.
 5. ON IRREGULAR SURFACES, SUCH AS CONCRETE OR MASONRY, FILL VOIDS ALONG TOP EDGE WITH MANUFACTURER'S RECOMMENDED ADHESIVE FILLER MATERIAL.
- MISCELLANEOUS:**
1. CAULK BETWEEN MILLWORK AND WALL. COLOR TO MATCH ADJACENT WALL COLOR. CAULK JOINTS AT COUNTERTOP AND BACKSPLASH, COLOR TO MATCH COUNTERTOP PLASTIC LAMINATE.
 2. CAULK ALL DOOR FRAMES TO RESILIENT FLOORING; CAULK COLOR TO MATCH DOOR FRAME PAINT.
 3. PAINT ALL EXPOSED FIRE ALARM CONDUIT; FIRE PROTECTION, MECHANICAL AND PLUMBING PIPING, AND MECHANICAL DUCTWORK TO MATCH EXISTING ADJACENT CEILING.
 4. ALL FIRE ALARM JUNCTION BOXES TO BE PAINTED RED.

Revisions		
No	Date	Description
3	02.02.24	Addendum 3



100% CD's

IRONDALE PUBLIC LIBRARY

1032 GRANTS MILL RD
IRONDALE, AL 35210
CITY OF IRONDALE

CHARLES WILLIAMS
& ASSOCIATES
ARCHITECTS
cw
3601 8TH AVE. SOUTH
BIRMINGHAM, ALABAMA 35222
PH: 205-250-0700
FAX: 205-250-0515

SHEET TITLE: FINISH PLAN - BLOCK B	
PROJECT NUMBER: 2022-08	
DATE: NOVEMBER 16, 2023	
DRAWN BY: JH	CHECKED BY: CSV

SHEET NUMBER

A4.13