

ADDENDUM NUMBER

05

March 28, 2024

**PROJECT: MORGAN COUNTY EVENTS CENTER
ARCHITECT: GOODWYN MILLS CAWOOD
OWNER: MORGAN COUNTY COMMISSION**

AD5-1 GENERAL:

- A. The following revisions and/or additions to the Drawings and Project Manual are hereby made a part of same, and shall be incorporated in the Work of the Contract the same as if originally included in the Bid and Construction Documents.
- B. Bidders shall acknowledge receipt of this Addendum in writing, as provided on the Proposal Form.
- C. When a revision and/or addition is called for to the Drawings or Project Manual, they shall be fully coordinated with and carried through all applicable Drawings and portions of the Project Manual, including in part, all related Civil, Landscaping, Architectural, Structural, Plumbing, Mechanical, Electrical, and other Documents.

AD5-2 CLARIFICATIONS:

- A. BID date is April 3, 2024; 2:00 PM.
- B. Successful bidder must abide by A.R.P.A. requirements (see attached.)
- C. Please see revised answer on RFI#66 – drainage question attached.
- D. Bollards are in contract. Include installation & painting, curb & gutter in addition to what is shown on the plans.
- E. See attached RFI response and cut sheet for stainless shelving for Kitchen and Concession spaces.
- F. Provide a unit price for 725 LF of concrete curb & gutter in addition to what is shown on the Plans.
- G. Provide \$7000.00 allowance for additional parking lot lighting. This allowance shall be per light, up to 5 additional lights, in addition to what is shown on the Plans. The allowance shall include, excavation, forming, concrete reinforcing. Light pole & light fixture, as well as shipping & tax.
- H. Disregard FDC note on Sheet FP1.01 regarding FDC & backflow. Items will be provided by Utility & Owner at the street.
- I. Interior wall @ ELECTRICAL RM 104, DATA 118, and MECHANICAL 101 shall be 1 Hr. rated type “x” gypsum board, sealed @ deck.
- J. Bid bond is not to exceed \$10,000.00

AD5-3 DRAWINGS

Drawings Removed:

- A. G1.21 Partition Types (3/22/2024)
- B. G1.22 Wall Types (3/22/2024)
- C. C-102 Site Layout Plan (3/26/2024)
- D. FP1.00 Details & Notes Fire Protection (2.15.2024)
- E. FP1.01 First Floor Plan Fire Protection (2.15.2024)

Drawings Added:

- A. G1.21 Partition Types (3/28/2024)
- B. G1.21B Partition Types Cont. (3/28/2024)
- C. G1.22 Wall Types (3/28/2024)
- D. C-102 Site Layout Plan (3/28/2024)
- E. A1.01 First Floor Plan (3/28/2024)
- F. FP1.00 Details & Notes Fire Protection (3/28/2024)
- G. FP1.01 First Floor Plan Fire Protection (3/28/2024)

AD5-4 SPECIFICATION

Items Removed:

- A. ...

Items Added:

- A. 03 3660 Sealed Concrete Floor

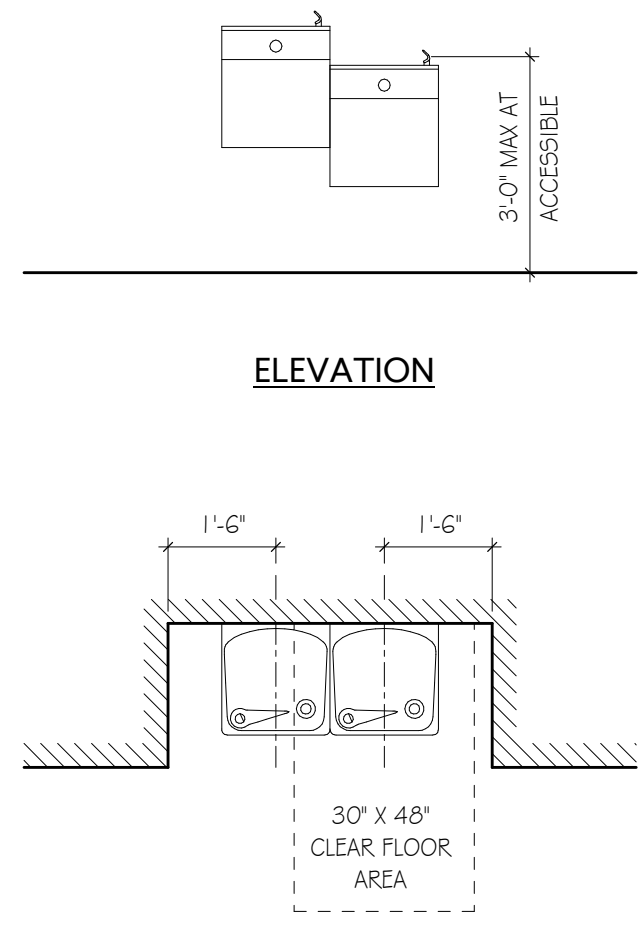
AD5-5 MISC

- A. RFI 011 - metal shelf
- B. A.R.P.A. Requirements

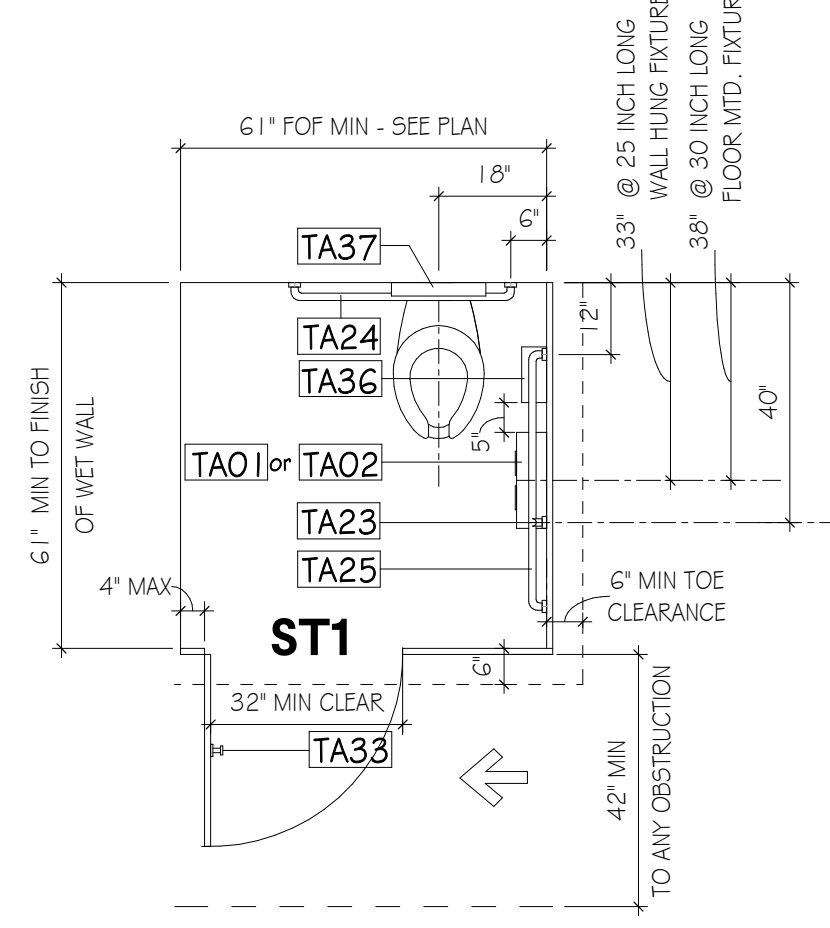
AD5-6 RFIs & QUESTIONS

- A. MorganCoEvent RFI Log (3.28.2024) GMC

END OF ADDENDUM 5

[illegible]

FOUNTAIN / COOLER - HI-LO



Technical diagram of the ST5 toilet showing side and top views with dimensions and labels.

Side View Dimensions:

- Overall width: 37" MAX
- Clearance inside: 18 1/2" (left), 18 1/2" (right)
- Height from floor to top of tank: 33" @ 25 INCH LONG WALL HINGE, 39" @ 30 INCH LONG FLOOR MTD. HNT
- Height from floor to top of bowl: 47"
- Height from floor to top of tank (left side): 12"
- Height from floor to top of bowl (left side): 5"

Top View Dimensions:

- Overall width: 32" MIN CLEAR
- Height from floor to top of bowl: 42" MIN
- Label: TA33
- Label: TO ANY OBSTRUCTION

Labels:

- TA37
- TA36
- TA01 or TA02
- TA23
- TA25
- ST5

Notes:

- 6" IT TO FINISH FACE OF WT WALL

Diagram of a standard toilet stall showing dimensions and component labels:

- TA37**: Top of toilet bowl
- TA36**: Top of toilet seat
- TAO1 or TAO2**: Toilet bowl offset
- TA33**: Toilet bowl offset
- ST6**: Toilet seat
- Dimensions**:
 - 36" CLEAR (Top)
 - 18" (Top offset)
 - 35" (Right side offset)
 - 24" MIN CLEAR (Bottom)
 - 6" TO FINISH FACE OF WET WALL (Right side)

Diagram illustrating the installation of a urinal into a wall. The diagram shows a cross-section of the wall and the urinal fixture. Key dimensions and labels include:

- 36" MIN CLEAR**: Minimum clearance above the urinal.
- EQ**: Equal spacing on either side of the urinal.
- 24"**: Height of the wall section above the urinal.
- HC**: Height of the urinal fixture.
- 30" X 48" REQ'D. FLOOR CLEARANCE AT URINAL**: Required floor clearance area.

Diagram illustrating a 24" wide opening. The opening is defined by two vertical lines, each labeled "24\". The distance between the inner edges of the opening is labeled "30\" MIN. CLR." and "36\" MAX. CLR.". The opening is labeled "EQ" on both sides.

STANDARD URINAL STALL

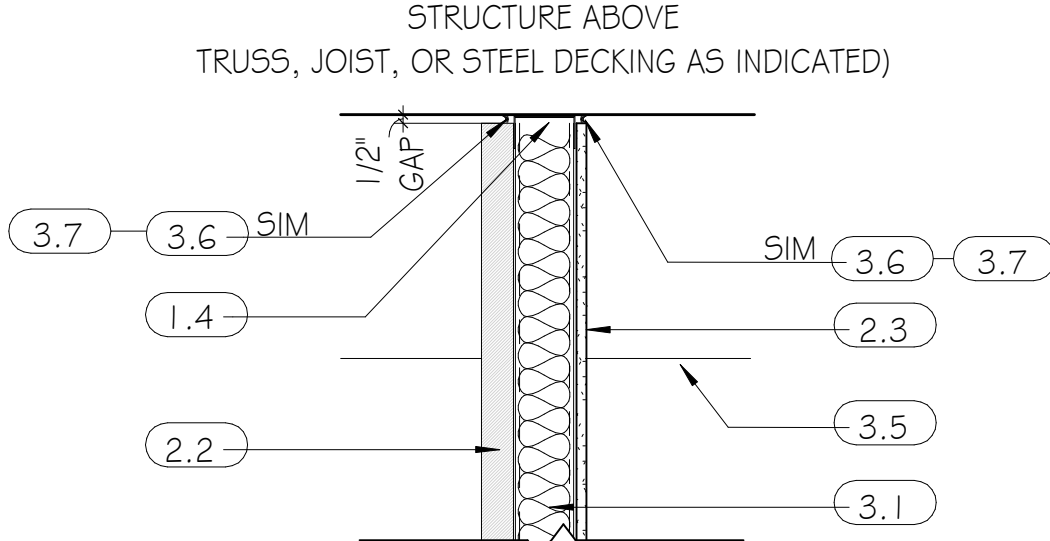
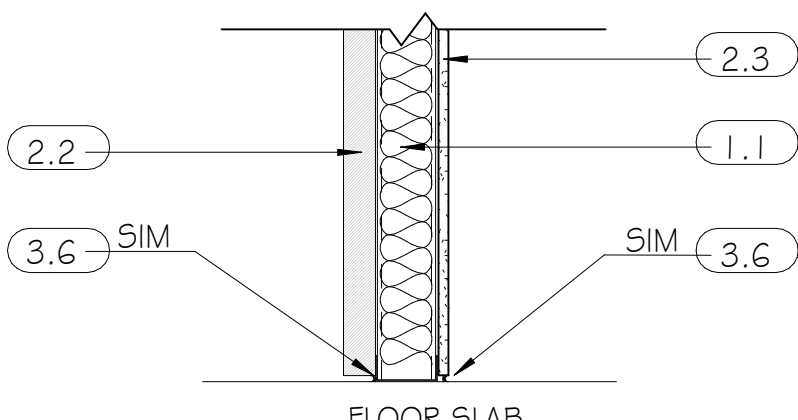
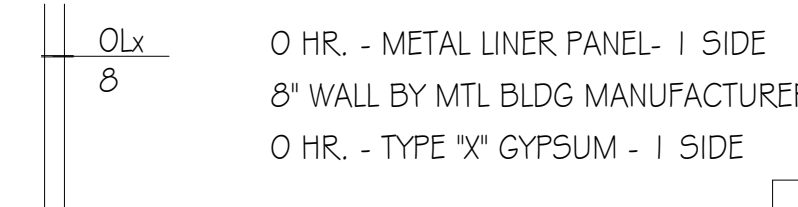

PLAN DESIGNATION	ST7
------------------	-----

1. LOCATE FLUSH ACTIVATION ON WIDE SIDE AT ALL TOILETS - LOCATE FLUSH VALVE BENEATH ADJACENT GRAB BARS.
2. SANITARY NAPKIN DISPOSALS TO BE PROVIDED AT ALL FEMALE, UNISEX, & FAMILY TOILETS

NUMBERED NOTES

DRAWING MARK	DESCRIPTION	DRAWING MARK	DESCRIPTION	DRAWING MARK	DESCRIPTION	DRAWING MARK	DESCRIPTION	DRAWING MARK	DESCRIPTION	DRAWING MARK	DESCRIPTION	DRAWING MARK	DESCRIPTION						
OL-2 14"		0 HR. - METAL LINER PANEL 10\"/>		OL-1 3.5		0 HR. - METAL LINER PANEL- 1 SIDE 3 5/8\"/>		OL 8		0 HR. - METAL LINER PANEL- 1 SIDE 8\"/>		OG-2 6		0 HR. - GYPSUM (BOTH SIDES) 6\"/>		IG 1 HR. - GYPSUM			
DRAWING MARK		DESCRIPTION		U.L. #		N/A		DRAWING MARK		DESCRIPTION		U.L. #		N/A		DRAWING MARK		DESCRIPTION	
STC		--						STC		--		STC		47		STC		49	
OG-1 3.5		0 HR. - GYPSUM - 1 SIDED 3 5/8\"/>		OG-1 6		0 HR. - GYPSUM - 1 SIDED 6\"/>		IG-1 3.5		0 HR. - GYPSUM - 1 SIDED 3 5/8\"/>		IG-1 3.5		0 HR. - GYPSUM - 1 SIDED 3 5/8\"/>		IG-1 3.5		0 HR. - GYPSUM - 1 SIDED 3 5/8\"/>	
DRAWING MARK		DESCRIPTION		U.L. #		N/A		DRAWING MARK		DESCRIPTION		U.L. #		N/A		DRAWING MARK		DESCRIPTION	
STC		--						STC		--		STC		47		STC		49	
OG-1 3.5		0 HR. - GYPSUM - 1 SIDED 3 5/8\"/>		OG-1 6		0 HR. - GYPSUM - 1 SIDED 6\"/>		IG-1 3.5		0 HR. - GYPSUM - 1 SIDED 3 5/8\"/>		IG-1 3.5		0 HR. - GYPSUM - 1 SIDED 3 5/8\"/>		IG-1 3.5		0 HR. - GYPSUM - 1 SIDED 3 5/8\"/>	
DRAWING MARK		DESCRIPTION		U.L. #		N/A		DRAWING MARK		DESCRIPTION		U.L. #		N/A		DRAWING MARK		DESCRIPTION	
STC		--						STC		--		STC		47		STC		49	
OG-1 3.5		0 HR. - GYPSUM - 1 SIDED 3 5/8\"/>		OG-1 6		0 HR. - GYPSUM - 1 SIDED 6\"/>		IG-1 3.5		0 HR. - GYPSUM - 1 SIDED 3 5/8\"/>		IG-1 3.5		0 HR. - GYPSUM - 1 SIDED 3 5/8\"/>		IG-1 3.5		0 HR. - GYPSUM - 1 SIDED 3 5/8\"/>	
DRAWING MARK		DESCRIPTION		U.L. #		N/A		DRAWING MARK		DESCRIPTION		U.L. #		N/A		DRAWING MARK		DESCRIPTION	
STC		--						STC		--		STC		47		STC		49	
OG-1 3.5		0 HR. - GYPSUM - 1 SIDED 3 5/8\"/>		OG-1 6		0 HR. - GYPSUM - 1 SIDED 6\"/>		IG-1 3.5		0 HR. - GYPSUM - 1 SIDED 3 5/8\"/>		IG-1 3.5		0 HR. - GYPSUM - 1 SIDED 3 5/8\"/>		IG-1 3.5		0 HR. - GYPSUM - 1 SIDED 3 5/8\"/>	
DRAWING MARK		DESCRIPTION		U.L. #		N/A		DRAWING MARK		DESCRIPTION		U.L. #		N/A		DRAWING MARK		DESCRIPTION	
STC		--						STC		--		STC		47		STC		49	
OG-1 3.5		0 HR. - GYPSUM - 1 SIDED 3 5/8\"/>		OG-1 6		0 HR. - GYPSUM - 1 SIDED 6\"/>		IG-1 3.5		0 HR. - GYPSUM - 1 SIDED 3 5/8\"/>		IG-1 3.5		0 HR. - GYPSUM - 1 SIDED 3 5/8\"/>		IG-1 3.5		0 HR. - GYPSUM - 1 SIDED 3 5/8\"/>	
DRAWING MARK		DESCRIPTION		U.L. #		N/A		DRAWING MARK		DESCRIPTION		U.L. #		N/A		DRAWING MARK		DESCRIPTION	
STC		--						STC		--		STC		47		STC		49	
OG-1 3.5		0 HR. - GYPSUM - 1 SIDED 3 5/8\"/>		OG-1 6		0 HR. - GYPSUM - 1 SIDED 6\"/>		IG-1 3.5		0 HR. - GYPSUM - 1 SIDED 3 5/8\"/>		IG-1 3.5		0 HR. - GYPSUM - 1 SIDED 3 5/8\"/>		IG-1 3.5		0 HR. - GYPSUM - 1 SIDED 3 5/8\"/>	
DRAWING MARK		DESCRIPTION		U.L. #		N/A		DRAWING MARK		DESCRIPTION		U.L. #		N/A		DRAWING MARK		DESCRIPTION	
STC		--						STC		--		STC		47		STC		49	
OG-1 3.5		0 HR. - GYPSUM - 1 SIDED 3 5/8\"/>		OG-1 6		0 HR. - GYPSUM - 1 SIDED 6\"/>		IG-1 3.5		0 HR. - GYPSUM - 1 SIDED 3 5/8\"/>		IG-1 3.5		0 HR. - GYPSUM - 1 SIDED 3 5/8\"/>		IG-1 3.5		0 HR. - GYPSUM - 1 SIDED 3 5/8\"/>	
DRAWING MARK		DESCRIPTION		U.L. #		N/A		DRAWING MARK		DESCRIPTION		U.L. #		N/A		DRAWING MARK		DESCRIPTION	
STC		--						STC		--		STC		47		STC		49	
OG-1 3.5		0 HR. - GYPSUM - 1 SIDED 3 5/8\"/>		OG-1 6		0 HR. - GYPSUM - 1 SIDED 6\"/>		IG-1 3.5		0 HR. - GYPSUM - 1 SIDED 3 5/8\"/>		IG-1 3.5		0 HR. - GYPSUM - 1 SIDED 3 5/8\"/>		IG-1 3.5		0 HR. - GYPSUM - 1 SIDED 3 5/8\"/>	
DRAWING MARK		DESCRIPTION		U.L. #		N/A		DRAWING MARK		DESCRIPTION		U.L. #		N/A		DRAWING MARK		DESCRIPTION	
STC		--						STC		--		STC		47		STC		49	
OG-1 3.5		0 HR. - GYPSUM - 1 SIDED 3 5/8\"/>		OG-1 6		0 HR. - GYPSUM - 1 SIDED 6\"/>		IG-1 3.5		0 HR. - GYPSUM - 1 SIDED 3 5/8\"/>		IG-1 3.5		0 HR. - GYPSUM - 1 SIDED 3 5/8\"/>		IG-1 3.5		0 HR. - GYPSUM - 1 SIDED 3 5/8\"/>	
DRAWING MARK		DESCRIPTION		U.L. #		N/A		DRAWING MARK		DESCRIPTION		U.L. #		N/A		DRAWING MARK		DESCRIPTION	
STC		--						STC		--		STC		47		STC		49	
OG-1 3.5		0 HR. - GYPSUM - 1 SIDED 3 5/8\"/>		OG-1 6		0 HR. - GYPSUM - 1 SIDED 6\"/>		IG-1 3.5		0 HR. - GYPSUM - 1 SIDED 3 5/8\"/>		IG-1 3.5		0 HR. - GYPSUM - 1 SIDED 3 5/8\"/>		IG-1 3.5		0 HR. - GYPSUM - 1 SIDED 3 5/8\"/>	
DRAWING MARK		DESCRIPTION		U.L. #		N/A		DRAWING MARK		DESCRIPTION		U.L. #		N/A		DRAWING MARK		DESCRIPTION	
STC		--						STC		--		STC		47		STC		49	
OG-1 3.5		0 HR. - GYPSUM - 1 SIDED 3 5/8\"/>		OG-1 6		0 HR. - GYPSUM - 1 SIDED 6\"/>		IG-1 3.5		0 HR. - GYPSUM - 1 SIDED 3 5/8\"/>		IG-1 3.5		0 HR. - GYPSUM - 1 SIDED 3 5/8\"/>		IG-1 3.5		0 HR. - GYPSUM - 1 SIDED 3 5/8\"/>	
DRAWING MARK		DESCRIPTION		U.L. #		N/A		DRAWING MARK		DESCRIPTION		U.L. #		N/A		DRAWING MARK		DESCRIPTION	
STC		--						STC		--		STC		47		STC		49	
OG-1 3.5		0 HR. - GYPSUM - 1 SIDED 3 5/8\"/>		OG-1 6		0 HR. - GYPSUM - 1 SIDED 6\"/>		IG-1 3.5		0 HR. - GYPSUM - 1 SIDED 3 5/8\"/>		IG-1 3.5		0 HR. - GYPSUM - 1 SIDED 3 5/8\"/>		IG-1 3.5		0 HR. - GYPSUM - 1 SIDED 3 5/8\"/>	
DRAWING MARK		DESCRIPTION		U.L. #		N/A		DRAWING MARK		DESCRIPTION		U.L. #		N/A		DRAWING MARK		DESCRIPTION	
STC		--						STC		--		STC		47		STC		49	
OG-1 3.5		0 HR. - GYPSUM - 1 SIDED 3 5/8\"/>		OG-1 6		0 HR. - GYPSUM - 1 SIDED 6\"/>		IG-1 3.5		0 HR. - GYPSUM - 1 SIDED 3 5/8\"/>		IG-1 3.5		0 HR. - GYPSUM - 1 SIDED 3 5/8\"/>		IG-1 3.5		0 HR. - GYPSUM - 1 SIDED 3 5/8\"/>	
DRAWING MARK		DESCRIPTION		U.L. #		N/A		DRAWING MARK		DESCRIPTION		U.L. #		N/A		DRAWING MARK		DESCRIPTION	
STC		--						STC		--		STC		47		STC		49	
OG-1 3.5		0 HR. - GYPSUM - 1 SIDED 3 5/8\"/>		OG-1 6		0 HR. - GYPSUM - 1 SIDED 6\"/>		IG-1 3.5		0 HR. - GYPSUM - 1 SIDED 3 5/8\"/>		IG-1 3.5		0 HR. - GYPSUM - 1 SIDED 3 5/8\"/>		IG-1 3.5		0 HR. - GYPSUM - 1 SIDED 3 5/8\"/>	
DRAWING MARK		DESCRIPTION		U.L. #		N/A		DRAWING MARK		DESCRIPTION		U.L. #		N/A		DRAWING MARK		DESCRIPTION	
STC		--						STC		--		STC		47		STC		49	
OG-1 3.5		0 HR. - GYPSUM - 1 SIDED 3 5/8\"/>		OG-1 6		0 HR. - GYPSUM - 1 SIDED 6\"/>		IG-1 3.5		0 HR. - GYPSUM - 1 SIDED 3 5/8\"/>		IG-1 3.5		0 HR. - GYPSUM - 1 SIDED 3 5/8\"/>		IG-1 3.5		0 HR. - GYPSUM - 1 SIDED 3 5/8\"/>	
DRAWING MARK		DESCRIPTION		U.L. #		N/A		DRAWING MARK		DESCRIPTION		U.L. #		N/A		DRAWING MARK		DESCRIPTION	
STC		--						STC		--		STC		47		STC		49	

PARTITION TYPES INTERIOR

DRAWING MARK		DESCRIPTION		DRAWING MARK		DESCRIPTION		DRAWING MARK		DESCRIPTION	
											
											
											
											

NUMBERED NOTES

- 1.0 METAL STUDS 1 6" OC. DOUBLE-STUD JAMBS FULL HT. AT DOOR OPENINGS.
- 1.3 PLUMBING CHASE, 1-5/8" METAL STUDS 1 6" OC IN TWO ROWS. WIDTH VARYING
- 1.4 DEFLECTION TRACK (0.0329 IN. METAL THICKNESS,) MAINTAIN MIN. 1/2" STUD GAP.
- 1.5 CONTINUOUS TOP TRACK (0.0329 IN. METAL THICKNESS.)
- 1.7 STUD BRACING MIN. 48 IN. OC (24" OC AT WALL-HUNG CABINETS.)
- 1.8 STEEL STUD OR RUNNER BRACING, FULL WIDTH OF CAVITY, 48" OC VERT.
- 1.10 CMU (UL LISTED WHERE APPLICABLE.) SEE STRUCTURAL FOR REINFORCING, LUTE, LUTER AND TOP BRACING REQUIREMENTS.
- 1.11 AT INTERIOR FURRING: PROVIDE 7/8 IN. HAT-SHAPED METAL FURRING.
- 2.0 ONE LAYER 5/8 IN. GYP BD.
- 2.2 2" ACOUSTIC PERFORATED MT INSUL. UNLER PANEL TO BE SHOP FABRICATED, PRIMED & FINISHED, INSULATING MATERIAL TO BE BLACK. MT PANEL COLOR TO BE SELECTED.
- 2.3 ONE LAYER 5/8 IN. TYPE "X" GYP. BD.
- 2.11 ONE LAYER 5/8" TYPE "X" CLASS-MAT BACKER BOARD WITH THIN-SET TILE U TO CEILING. TRANSITION TO 5/8" TYPE "X" MR GYP BOARD FROM ABOVE CEILING TO STRUCTURE ABOVE.
- 3.0 SOUND ATTENUATION BATT INSULATION, THICKNESS VARIES - SEE PLAN.
- 3.2 SOUND ATTENUATION BATT INSULATION, 10 IN. THICK.
- 3.3 SOUND ATTENUATION BATT INSULATION BOTH SIDES OF STUD CAVITY. 3.5" THICK
- 4.0 ACOUSTICAL CEILING PANELS, WHERE CEILING PANELS WITH COMBINED NRC/ICAC RATINGS OF 0.70/35 (OR BETTER) ARE USED, DRAPED INSULATION MAY BE OMITTED.
- 3.6 ACOUSTICAL SEALANT JOINT. PROVIDE CONTINUOUS BEAD UNDER EACH LAYER GYP BD.
- 3.7 ACOUSTICAL SEALANT JOINT. AT FLUTED DECKS, COPE GYP. BD. TO UNDERSIDE OF DECK. FLIT VOIDS W/ INSULATION APPLY ACOUSTICAL SEALANT CONTINUOUS AT JOINT.
- 3.8 UL LISTED FIRE-RESISTANCE RATED HW (HEAD OF WALL) JOINT.
- 3.9 UL LISTED FIRE-RESISTANCE RATED BW (BOTTOM OF WALL) JOINT
- 3.10 GYPSUM BOARD SHALL EXTEND FULLY TO TOP OF TRACK TO ESTABLISH A DRAFT STOP ASSEMBLY. CONDUIT TURNSOUTS AND ELECTRICAL BOXES MUST STAND CLEAR OF METAL STUDS TO ALLOW FOR APPLICATION OF AN UNINTERRUPTED GYPSUM MEMBRANE.
- 3.11 2 1 1/2" EXTERIOR MT LINER PANEL.

GENERAL NOTES - PARTITIONS

- UL LISTED ASSEMBLIES**
- A. WHERE UL ASSEMBLY NUMBERS ARE REFERENCED ABOVE, PARTITIONS SHALL BE CONSTRUCTED IN STRICT COMPLIANCE WITH REQUIREMENTS SET FORTH BY THE UL FIRE RESISTANCE DIRECTORY. NO DEVIATION SHALL BE ALLOWED WITHOUT PRIOR WRITTEN APPROVAL BY THE ARCHITECT AND/OR BUILDING OFFICIAL.
- 2. FIRE BARRIERS, FIRE PARTITIONS, & SMOKE BARRIERS (FIRE-RATED)**
- A. ALL PERIMETER JOINTS MUST BE PROTECTED BY UL LISTED FIRE-RESISTANT JOINT SYSTEMS.
- B. ALL PENETRATIONS OF RATED ASSEMBLIES MUST BE PROTECTED BY UL LISTED THROUGH-PENETRATION FIRESTOPPING ASSEMBLIES.
- C. FIRE DAMPERS MUST PROTECT HVAC DUCT PENETRATIONS.
- D. IDENTIFY FIRE WALLS, SMOKE BARRIERS, ETC., IN ACCESSIBLE CONCEALED FLOOR, FLOOR-CEILING OR ATTIC SPACES, BY STENCILING "X-HOUR FIRE AND/OR SMOKE BARRIER" IN 3-INCH HIGH CONTRASTING LETTERS, 3/8-INCH MINIMUM STROKE. LOCATE WITHIN 15 FEET OF END OF WALL, AND AT INTERVALS NOT EXCEEDING 30 FEET MEASURED HORIZONTALLY ALONG THE WALL OR PARTITION.
- 3. SMOKE PARTITIONS (NON-RATED)**
- A. ALL PERIMETER JOINTS MUST BE SEALED WITH AIRTIGHT SEALANT APPLICATION.
- B. ALL PIPING, ELECTRICAL, AND DUCT PENETRATIONS MUST BE SEALED WITH AIRTIGHT SEALANT APPLICATION.
- 4. SOUND INSULATION**
- A. INSULATION THICKNESS SHALL MATCH CAVITY DEPTH UNLESS NOTED OTHERWISE.
- B. INSULATE BEHIND RECESSED ITEMS IN ANY SCHEDULED ACOUSTIC PARTITIONS.
- C. INSULATION MAY BE OMITTED AT CHASES NOT EXCEEDING 10 S.F. IN AREA.
- 5. ACOUSTICAL SEALANT**
- A. AT ALL GYP BOARD AND METAL STUD PARTITIONS: REQUIRED AT BOTTOM AND TOP RUNNERS AND AT WALL ANGLES WHERE DISSIMILAR MATERIALS MEET (SEE DETAILS).
- B. AT SCHEDULED ACOUSTIC PARTITIONS: AIRTIGHT SEAL IS REQUIRED AT ALL PENETRATIONS.
- C. ELECTRICAL AND OTHER BOXES TO BE WRAP-SEALED (SEE DETAILS).
- 6. PARTITION COORDINATION**
- A. COMPLY WITH "PARTITION COORDINATION WITH OTHER TRADES" REQUIREMENTS LOCATED UNDER "GENERAL NOTES" ON PROJECT INFORMATION DRAWING G1.00.
- B. SEE G1.23 FOR EXTERIOR WALL TYPES.

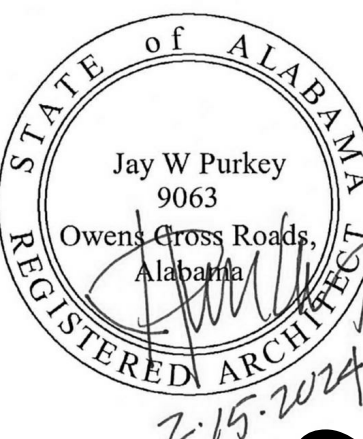
PARTITION KEY

1G	TYPE 1G
6"	6" METAL STUDS
1S	TYPE 1S
2.5"	2.5" METAL CH STUDS
OM	TYPE OM
4"	4" CMU
PARTITION TYPE _____	
FRAMING SIZE IN INCHES	

	ISSUE	DATE
	REVISION-3	3.20.2024
1	ADDENDUM-5	03.28.2024
	DRAWN BY:	Author
	CHECKED BY:	Checker

MORGAN COUNTY EVENT CENTER
382 UNION HILL RD
LACEYS SPRING, ALABAMA 35754

GMC AHUN2300Q8



WALL TYPES

G1.22

DRAWING MARK	DESCRIPTION			DRAWING MARK	DESCRIPTION			DRAWING MARK	DESCRIPTION			DRAWING MARK	DESCRIPTION		
	BATT INSULATION TO MEET R-VALUE BY MTL BLDG MANUFACTURER.	(2.3)							BATT INSULATION TO MEET R-VALUE BY MTL BLDG MANUFACTURER.	(1.1)					
OL 12	0 HR. - METAL LINER PANEL- I SIDE 12" WALL BY MTL BLDG MANUFACTURER.			OL 10	0 HR. - EXT. METAL LINER PANEL- I SIDE 10" WALL BY MTL BLDG MANUFACTURER.										
		U.L. #	N/A			U.L. #	N/A								
DRAWING MARK	DESCRIPTION	STC	--	DRAWING MARK	DESCRIPTION	STC	--	DRAWING MARK	DESCRIPTION	STC	--	DRAWING MARK	DESCRIPTION	STC	--
	BATT INSULATION TO MEET R-VALUE BY MTL BLDG MANUFACTURER.	(1.3)	(1.4)	(2.1)					BATT INSULATION TO MEET R-VALUE BY MTL BLDG MANUFACTURER.	(1.3)	(1.4)	(2.1)			
OM-3 1/4 1/2"	EXTERIOR 3 5/8" BRICK VENEER ON STL GIRT, NO-GYP BRD ON INTERIOR SIDE.							OM-L1 15 3/8"	EXTERIOR 3 5/8" BRICK VENEER ON STL GIRT, GYP INTERIOR	(1.2)	(2.2)	(2.4)			
		U.L. #	N/A			U.L. #	N/A								
DRAWING MARK	DESCRIPTION	STC	--	DRAWING MARK	DESCRIPTION	STC	--	DRAWING MARK	DESCRIPTION	STC	--	DRAWING MARK	DESCRIPTION	STC	--
	BATT INSULATION TO MEET R-VALUE BY MTL BLDG MANUFACTURER.	(1.1)							BATT INSULATION TO MEET R-VALUE BY MTL BLDG MANUFACTURER.	(1.1)					
OLx 10	0 HR. - EXT. METAL LINER PANEL- I SIDE 10" WALL BY MTL BLDG MANUFACTURER. 5/8" TYPE "X" GYPSUM BOARD														
		U.L. #	N/A			U.L. #	N/A								
DRAWING MARK	DESCRIPTION	STC	--	DRAWING MARK	DESCRIPTION	STC	--	DRAWING MARK	DESCRIPTION	STC	--	DRAWING MARK	DESCRIPTION	STC	--

GENERAL NOTES - WALLS

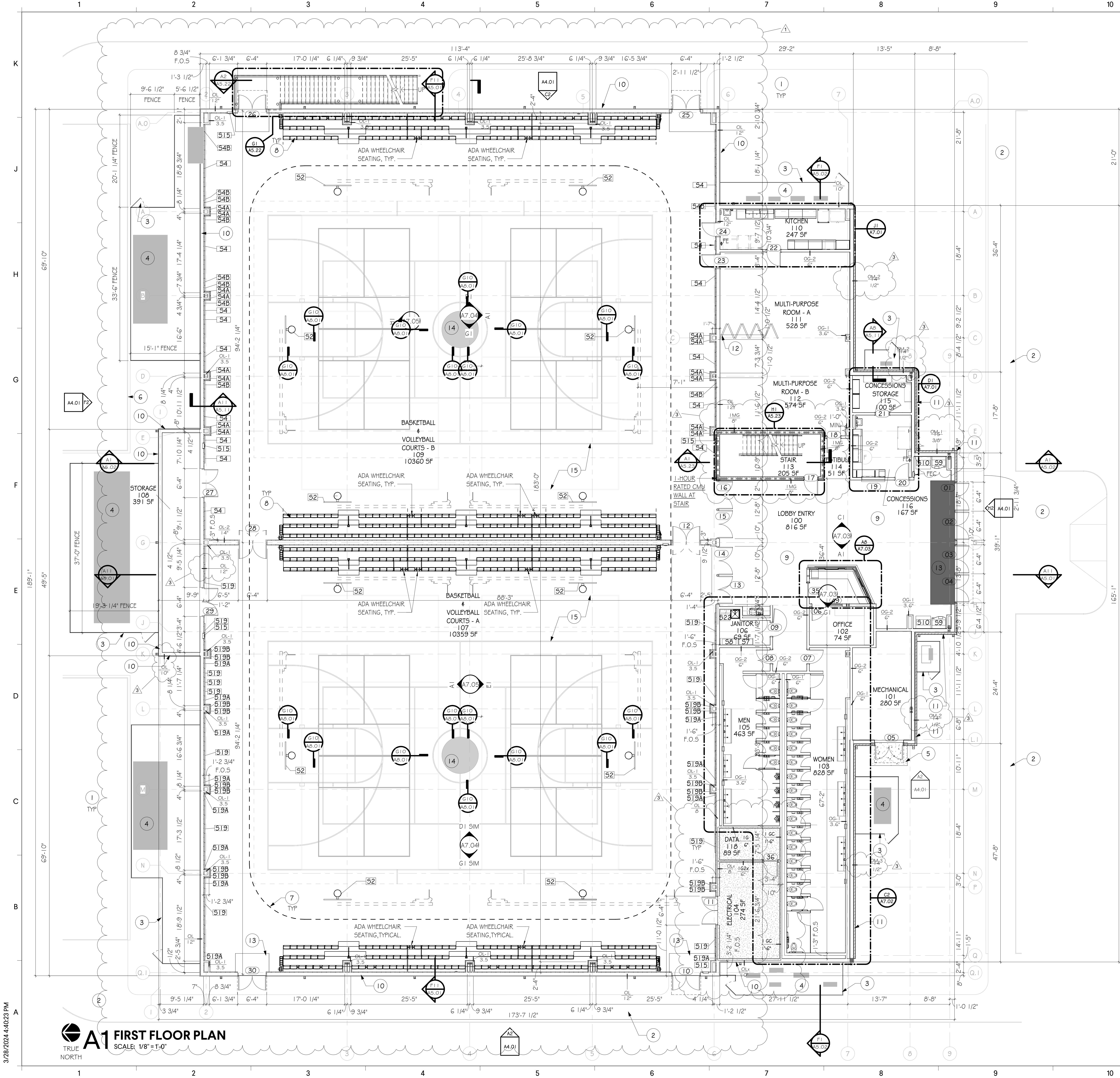
- UL LISTED ASSEMBLIES**
A. WHERE UL ASSEMBLY NUMBERS ARE REFERENCED ABOVE, WALLS SHALL BE CONSTRUCTED IN STRICT COMPLIANCE WITH REQUIREMENTS SET FORTH BY THE UL FIRE RESISTANCE DIRECTORY. NO DEVIATION SHALL BE ALLOWED WITHOUT PRIOR WRITTEN APPROVAL BY THE ARCHITECT AND/OR BUILDING OFFICIAL.
- FIRE BARRIERS, FIRE PARTITIONS, & SMOKE BARRIERS [FIRE-RATED]**

A. ALL PERIMETER JOINTS MUST BE PROTECTED BY UL LISTED FIRE-RESISTANT JOINT SYSTEMS.
B. ALL PENETRATIONS OF RATED ASSEMBLIES MUST BE PROTECTED BY UL LISTED THROUGH-PENETRATION FIRESTOPPING ASSEMBLIES.
C. FIRE DAMPERS MUST PROTECT HVAC DUCT PENETRATIONS.
D. IDENTIFY FIRE WALLS, SMOKE BARRIERS, ETC., IN ACCESSIBLE CONCEALED FLOOR, FLOOR-CEILING OR ATTIC SPACES, BY STENCILING "X-HOUR FIRE AND/OR SMOKE BARRIER" IN 3-INCH HIGH CONTRASTING LETTERS, 3/8-INCH MINIMUM STROKE. LOCATE WITHIN 15 FEET OF END OF WALL, AND AT INTERVALS NOT EXCEEDING 30 FEET MEASURED HORIZONTALLY ALONG THE WALL OR PARTITION.
- SMOKE PARTITIONS [NON-RATED]**

A. ALL PERIMETER JOINTS MUST BE SEALED WITH AIRTIGHT SEALANT APPLICATION.
B. ALL PIPING, ELECTRICAL, AND DUCT PENETRATIONS MUST BE SEALED WITH AIRTIGHT SEALANT APPLICATION.

3/28/2024 14:02:23 PM

A1 FIRST FLOOR PLAN
SCALE: 1/8" = 1'-0"
TRUE NORTH



SPECIALTY EQUIPMENT SCHEDULE

TAG	DESCRIPTION	COMMENTS
52	CEILING SUSPENDED, SIDE-FOLD, REAR OR FRONT-BRACED BASKETBALL GOAL	CFCI
54	BLUE BASKETBALL WALL SAFETY PADS 24" X 72"	CFCI
54A	BLUE BASKETBALL WALL SAFETY CORNER PADS 12" X 72"	CFCI
54B	BLUE BASKETBALL WALL SAFETY PADS CUSTOM SIZE FIELD VERIFY	CFCI
55	SCOREBOARD - ATHLETIC - WALL MOUNTED - BY OWNER, WIRELESS CONTROLLED, BUT HARDWIRED FOR POWER.	OFOI
56	MOP SINK	CFCI
57	METAL INDUSTRIAL SHELVING - 4 POST WITH 6 SHELVES - 36"W X 18"D X 84"H	CFCI
58	METAL INDUSTRIAL SHELVING - 4 POST WITH 6 SHELVES - 48"W X 18"D X 84"H	CFCI
59	ICE MACHINE	OFCI
510	VENDING MACHINES	OFCI
511	MICROWAVE	OFOI
512	REFRIGERATOR/FREEZER - SIDE BY SIDE	OFCI
513	COOLER	OFCI
514	FIRE EXTINGUISHER	CFCI
515	FIRE EXTINGUISHER CABINET	OFCI
516	STAINLESS STEEL SHELF	CFCI
517	WARMING CART	OFCI
518	COMMERCIAL GRADE FREEZER	OFCI
519	GREEN BASKETBALL WALL SAFETY PADS 24" X 72"	CFCI
519A	GREEN BASKETBALL WALL SAFETY PADS CUSTOM SIZE FIELD VERIFY	CFCI
519B	GREEN BASKETBALL WALL SAFETY CORNER PADS 12" X 72"	CFCI
520	GRAY BASKETBALL WALL SAFETY CORNER PADS 12" X 72"	CFCI
521	GRAY BASKETBALL WALL SAFETY CUSTOM CORNER PADS FIELD VERIFY	CFCI
522	MOP HOLDER & SHELF - 36"W	CFCI

KEYNOTES - FLOOR PLAN:

- GRADING TO SLOPE AWAY FROM BUILDING AND PROVIDE POSITIVE DRAINAGE. SEE CIVIL.
- CONCRETE SIDEWALK. SLOPE AWAY FROM BUILDING. SEE CIVIL.
- VINYL (HVAC) FENCING w/ LOCKABLE GATE, TYPICAL. SEE DETAIL 1/A8.05
- HVAC UNIT. SEE MECHANICAL
- CONCRETE PAD, SEE CIVIL
- CURB & GUTTER, SEE CIVIL
- RUNNING TRACK ABOVE AT MEZZANINE
- BLEACHER SYSTEM, SEE SPECIFICATIONS
- WALLS IN LOBBY TO HAVE IMPACT RESISTANT GYPSUM
- METAL BUILDING WALL ASSEMBLY:**
 - METAL PANEL (EXTERIOR SIDE)
 - AIR SPACE
 - INSET GIRTS BY MTL BLDG MANUFACTURER.
 - METAL PANEL PERFORATED ACOUSTICAL INTERIOR PANEL.
- BRICK VENEER WALL ASSEMBLY:**
 - BRICK VENEER (EXTERIOR SIDE)
 - AIR SPACE
 - WEATHER BARRIER OVER EXTERIOR GRADE SHEATHING
 - INSET GIRTS BY MTL BLDG MANUFACTURER.
 - GYPSUM WALL BOARD (INTERIOR SIDE)
- OPERABLE PARTITION
- 1" RECESS FOR WALK OFF MAT
- COUNTY LOGO, PAINTED ON FLOOR. SEE INTERIOR DETAILS / SHEETS
- SEE STRIPING PLAN FOR FLOOR DETAILS

BLEACHER NOTES:

- ALL VERIFIABLE DIMENSIONS ARE SUBJECT TO CHANGE PENDING FIELD VERIFICATION.
- FLOOR SHALL BE SMOOTH AND LEVEL, WITH SLOPE NOT TO EXCEED 1/8" IN 1'-0" (ALTERNATIVELY RECOMMEND FFSOFL35)
- IF WALL COLUMNS OR OTHER OBSTRUCTIONS EXIST IN PROPOSED BLEACHER AREA, VERIFY TYP, LOCATION, WIDTH, & DEPTH.
- BLEACHER SUPPLIER TO PROVIDE SHOP DRAWINGS SHOWING ALL COMPONENTS AND DIMENSIONS.

RELEASE A-GROUP 1: 144 SEATS + 3 WC SPACES
RELEASE A-GROUP 2: 129 SEATS + 2 WC SPACES

TOTAL: 273 SEATS + 5 WC SPACES

PARTITION LEGEND

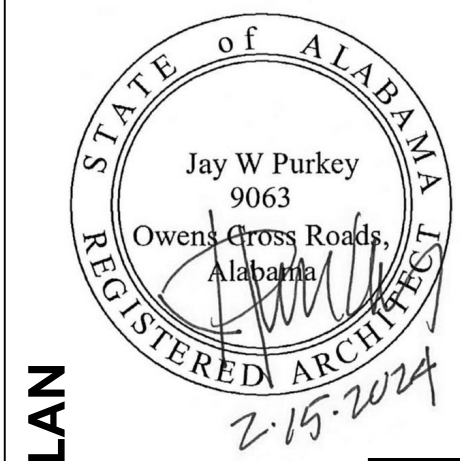
- TYPICAL PARTITION
- TYPICAL CMU PARTITION
- 1-HOUR FIRE RATED PARTITION

GENERAL NOTES

- DO NOT SCALE DRAWINGS.
- REFER TO SHEET G1.01 FOR GENERAL INFORMATION.
- REFER TO SHEET G1.11 FOR ABBREVIATIONS, MATERIAL AND SYMBOL LEGENDS AND TYPICAL MOUNTING HEIGHTS.
- REFER TO SHEET G1.21 FOR INTERIOR PARTITION TYPES.
- REFER TO SHEET G1.31 FOR FIRESTOPPING-THRU-PENETRATION SYSTEMS.
- UNLESS NOTED OTHERWISE LOCATE HINGE SIDE OF DOOR JAMB 6" FROM ADJACENT WALL FOR STUD FRAMING, 8" FOR MASONRY.
- DIMENSIONS SHOWN ARE TO FACE OF STUD OR BLOCK UNLESS NOTED OTHERWISE. COLUMN DIMENSIONS ARE CENTERLINE DIMENSIONS.
- INSTALL APPROPRIATE WOOD FRAMING ADEQUATE TO SUPPORT WALL OR CEILING MOUNTED EQUIPMENT, ACCESSORIES, CASEWORK OR OTHER MOUNTED ITEMS IN CONSTRUCTION. INSTALL PRESSURE TREATED WOOD FRAMING AT EXTERIOR WALLS OR WHERE FRAMING IS IN CONTACT WITH CONCRETE AND/OR MASONRY. INSTALL FIRE RETARDANT TREATED BLOCKING IN ALL RATED CONSTRUCTION.
- INSTALL BULLNOSE MASONRY UNITS AT ALL OUTSIDE CORNERS EXPOSED TO THE INTERIOR OF THE PROJECT. START BULLNOSE MASONRY UNITS 1 COURSE ABOVE FINISHED FLOOR AND STOP 1 COURSE BELOW CEILING.
- FINISHED FLOOR GRADE TO BE FLUSH THROUGHOUT EVENT CENTER.

MORGAN COUNTY EVENT CENTER
382 UNION HILL RD
LACEYS SPRING, ALABAMA 35754

FIRST FLOOR PLAN



A1.01

ISSUE DATE

ISSUED FOR BID 12/15/24
ADDENDUM-2 03/15/2024
ADDENDUM-3 03/22/2024
ADDENDUM-5 03/28/2024

GMC AHUN230008

DRAWN BY: YK
CHECKED BY:



Goodwyn Mills Cawood, LLC
117 Jefferson Street North
Huntsville, AL 35801
T 256.539.3431
GMCNETWORK.COM

GMC

**SECTION 033660
SEALED CONCRETE FLOOR**

PART 1 - GENERAL

1.01 SUMMARY

- A. Section Includes:
 - 1. Floors denoted on Finish Schedule as SC (Sealed Concrete).
 - 2. Furnish all labor, materials, equipment and services necessary for grinding and sealing concrete floors.
 - 3. PROTECTION OF CONCRETE SLABS DURING CONSTRUCTION.

1.02 RELATED SECTIONS

- A. Drawings and general provisions of Contract, including General Conditions and Division 1 Specification Sections, apply to the work of this Section.
- B. Section 03 3000 - Cast-in-Place Concrete: Concrete materials, placing, and finishing.
- C. Section 03 3010 - Cast-in-Place Concrete for Exposed Concrete Floors.
- D. Section 03 3680 - Concrete Polishing.

1.03 SUBMITTALS

- A. Contractor shall submit specified manufacturer's complete technical data sheets for all products to be used, including installation instructions.

1.04 QUALITY ASSURANCE

- A. Manufacturer Qualifications: Manufacturer of specified sealer shall have a minimum TEN (10) years experience in the production of the specified products.
- B. Contractor Qualifications: Contractor must have a minimum FIVE (5) years experience in sealing applications and successfully completed not less than SIX (6) projects comparable in scale and complexity.
- C. Regulatory Requirements
 - 1. Products shall comply with the United States Clean Air Act for maximum Volatile Organic Compound (VOC) content as specified in PART 2 of this section.
- D. Mockups and Field Samples: Prepare field sample at project site for architects review and approval.
 - 1. Samples shall be constructed on site and shall be 4'x4'. If there is existing concrete, the Architect shall select an area where the samples will be placed.
 - 2. Construct sample-using processes and techniques intended for use on permanent work, including curing procedures. Include samples of control, construction, and expansion joints in sample panels.
 - 3. Sample shall be sealed by the individual workers who will actually be performing the work for the project.
 - 4. Obtain written approval of the sample from project Architect before start of work.
 - 5. Retain approved samples through completion of the work for use as a quality standard for finished work.
 - 6. The mockup may remain part of the finished work if approved.
- E. Mandatory Pre-Pour Installation Conference: Conduct conference at project site to comply with requirements in Section 01 0150 - Special Conditions.
- F. Protection: General Contractor shall protect areas to receive polished concrete finishes at all times during construction to prevent oils, dirt, metal, excessive water and other potentially damaging materials from affecting the finished concrete surface. Protection measures listed below shall begin immediately after the concrete slab is poured:
 - 1. General Contractor to apply Ram Board or Econo-Cover temporary surface protection.

2. All hydraulic powered equipment shall be diapered to avoid staining of the concrete.
 3. All vehicle parking shall be prohibited on the finish slab area. If necessary to complete their scope of work, drop cloths shall be placed under vehicles at all times.
 4. No pipe cutting machine shall be used on the finished floor slab.
 5. Steel shall not be placed on the finish slab to avoid rusting.
 6. Acids and acidic detergents will not come in contact with slab.
 7. All painters will use drop cloths on the concrete. If paint gets on the concrete, it must be immediately removed.
 8. All trades will be informed that the slab must be protected at all times.
- G. Environmental Limitations
1. Comply with manufacturers written instructions for substrate temperature and moisture content, ambient temperature and humidity, ventilation and other conditions affecting chemical performance.
 2. Flatness and levelness
 - a. Finish Concrete shall have a minimum Floor Flatness rating of at least 45.
 - b. Finish Concrete shall have a minimum Floor Levelness rating of at least 35.
 - c. Finish Concrete shall be cured a minimum of 28 days or at which point equipment can be put on the slab and does not displace aggregate.
 3. Application of finish system shall take place a minimum of 21 days prior to fixture & trim installation and/or substantial completion.
 4. Finish Concrete area shall be closed to traffic during finish floor application and after application, for the time as recommended by manufacturer.
- H. Concrete Mix Design:
1. Concrete Mixture shall be 4,000 PSI or higher, non-air entrained.
 - a. Any admixtures, plasticizers, slag, fly ash or anything taking the place of Portland-based cement shall be kept to a minimum.
 - b. The cement shall be Portland Cement Type I, conforming to ASTM C 150.
 - c. Maintain concrete temperature below 85 degrees. Keep concrete as cool and moist for as long as possible. In essence, decrease rate of hydration and drying to minimize cracking.
 - d. Wet cures are most suitable, but if this cannot be achieved, use a dissipating cure and seal only.
 - e. All mix designs must be approved by Architect. Send all approved mix designs to Installer/Applicator.
 - f. The Engineer/Architect shall determine the saw cut pattern, color and layout.
 - g. Color loads for integral color should never be smaller than three (3) cubic yards.
 - h. Use one (1) source for cement, aggregates and pozzolans throughout the job. Monitor and control incoming material consistency. Do not use calcium chloride-based admixtures. Non-chloride admixtures may be used.
 - i. Wash out all drums before loading. Keep slumps consistent with a maximum of four (4). Minimize driver added water maintaining a .45 water content ratio.
 - j. Place concrete to achieve as true and smooth a top surface as possible. Mounds, or dips are not acceptable. GC shall control overall flatness and levelness, including on sloping areas to within tolerances permitted by specification - ASTM E1155.
 - k. Slab shall be protected from indentation and footprints during pour and curing.

1.05 DELIVERY, STORAGE AND HANDLING

- A. Deliver the specified products in original, unopened containers with legible manufacturer's identification and information.
- B. Store specified products in conditions recommended by the manufacturer.

1.06 JOB SITE CONDITIONS

- A. Environmental Conditions: Maintain an ambient temperature of between 50° F and 90° F during application and at least 48 hours after application.
- B. Protection: Precautions shall be taken to avoid damage or contamination of any surfaces near the work zone. Protect completed stain work from moisture or contamination.

PART 2 - PRODUCTS

2.01 MANUFACTURERS

- A. Euclid Chemical: www.euclidchemical.com.
- B. Ameripolish 3D HS; Ameripolish, Inc.
- C. Prosoco, Inc.: www.prosoco.com.
- D. Dayton Superior Corporation: www.daytonsuperior.com.
- E. Substitutions: See Section 01600 - Product Requirements.

2.02 PRODUCTS

- A. Densifier: a concrete hardener chemically reactive, waterborne solution of inorganic silicate or silicate materials and proprietary components; odorless; colorless which hardens and densifies concrete surfaces to protect against abrasion, dusting, and absorption of liquids.
 - 1. Basis of Design: EUCO Diamond Hard.
- B. Control Joint and Saw Cut Filler, two part polyurea.
 - 1. Hi-Tech HT-PE85; Hi-Tech Systems.
 - 2. Spal-Pro RS-88; Metzger/McGuire.
 - 3. Euclid QuickJoint 200, (Grey Only); Euclid Chemical Company.
- C. Substitutions: The use of any products other than those specified will be considered providing that the contractor requests its use in writing within fourteen (14) days prior to bid date. This request shall be accompanied by:
 - 1. A certificate of compliance from the material manufacturer stating that the proposed products meet or exceed the requirements for this specification.
 - 2. Documented proof that the proposed material has a five (5) year proven record of performance for sealing, hardening and densifying concrete substrates, confirmed by at least two (2) local projects that the Architect can examine.

PART 3 - EXECUTION

3.01 EXAMINATION

- A. Verification of Conditions: Contractor shall examine areas and conditions under which work will be performed and identify conditions detrimental to proper and timely completion of work. Do not proceed until unsatisfactory conditions have been corrected.

3.02 PREPARATION

- A. New Concrete
 - 1. Apply sealer/densifier immediately after final finishing and installation of control joints (if manufacturer's recommendations permit); when the concrete surface won't be marred by foot traffic and after joints have been cut and cleaned or anytime thereafter. Remove soft cut saw debris prior to applying sealer/densifier. Surface shall be swept, and mopped or pressure-washed as necessary to insure no dirt, grit, trash, or similar items mar finished product. Remove all markings, including paint, marker or pencil marks. Inspect floor surface prior to application to be sure it is ready for sealer/densifier.
 - B. Existing Concrete
 - 1. Remove all dirt, debris, or curing compounds using appropriate surface prep cleaner. Allow cleaning waters used in surface preparation to dry.
 - C. Final Saw-Cutting
-

1. Layout and cut precise edges at over-poured floor depressions and slab edges and remove excess concrete material to the depth of the depression.

3.03 APPLICATION OF SEALER

A. New Concrete

1. The surface shall be sealed with a sealer produced of the type specified under Products above.
 - a. Also apply manufacturer's protection coat as specified above.
2. Apply at the rates and method recommended by manufacturer in written instructions which the installer shall have at the job site.
3. Apply a single coat using low pressure sprayer fitted with 0.5 gal/min spray tip. Lightly apply sufficient product to wet the surface without producing puddles. Use clean, soft bristle push broom or microfiber pad to spread the product evenly and ensure uniform wetting. Avoid spreading once drying begins. Scrubbing is not necessary.
4. If surfaces dry immediately, increase the rate of application. Surfaces should remain wet 5 to 10 minutes. Adjust rate of application to eliminate puddles. Any white residue must be removed immediately.
5. Allow treated surfaces to dry.
6. For uncured steel troweled concrete, immediately apply the specified curing compound or initiate specified curing procedure.
7. When the curing process is complete, use an automatic floor scrubber equipped with cleaning pads or brushes appropriate for removal of accumulated construction soiling and surface residues. Avoid pads or brushes which may damage the finished floor.

B. Existing Concrete

1. The surface shall be sealed with a sealer produced of the type specified under Products above.
 - a. Also apply manufacturer's protection coat as specified above.
2. Apply at the rates and method recommended by manufacturer in written instructions which the installer shall have at the job site.
3. Apply a single coat using low pressure sprayer fitted with 0.5 gal/min spray tip. Lightly apply sufficient product to wet the surface without producing puddles. Use clean, soft bristle push broom or microfiber pad to spread the product evenly and ensure uniform wetting. Avoid spreading once drying begins. Scrubbing is not necessary.
4. If surfaces dry immediately, increase the rate of application. Surfaces should remain wet 5 to 10 minutes. Adjust rate of application to eliminate puddles. Any white residue must be removed immediately.
5. Allow treated surfaces to dry.
6. Remove any dried powder residue using a stiff broom, power sweeper, or auto-scrubbing machine.
7. Dry-Buffer or burnish concrete surface in both directions with orbital floor machine or burnisher equipped with appropriate polishing pad for additional surface sheen.

3.04 PROTECTION


- A. Protection: General Contractor shall protect areas to receive sealed concrete finish at all times during construction to prevent oils, dirt, metal, excessive water and other potentially damaging materials from affecting the finished concrete surface. Protection measures listed below shall begin immediately after the concrete slab is poured.
- B. Do not allow any trade to park any vehicles on the inside slab. If necessary to complete their scope of work, drop cloths will be placed under vehicles at all times.
- C. Diaper all hydraulic powered equipment to avoid staining of the concrete.
- D. Place no steel on interior slab to avoid rust stains and gouges. If construction dictates necessity of this, interior slab will be protected with 1/2-inch plywood.

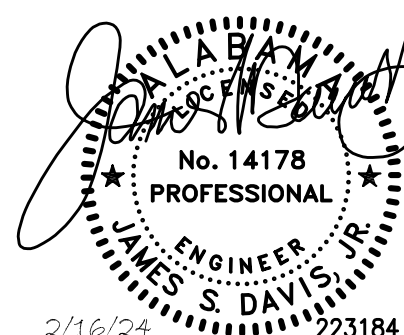
- E. Do not allow acids and acidic detergents to come into contact with slab.
- F. Inform all trades that the slab must be protected at all times.
- G. Protect finished work until fully cured in accordance with manufacturer's recommendations.
- H. Protect completed floor from damage until Substantial Completion.
 - 1. Do not allow vehicle and pedestrian traffic on unprotected floor.
 - 2. Do not allow construction materials, equipment, and tools on unprotected floor.
- I. Immediately remove mortar splatter, spilled liquids, oil, grease, paint, coatings, and other surface contaminants which could adversely affect completed floor.
- J. Repair damaged areas of completed floor to satisfaction of Architect.
- K. Protect floor from traffic for at least 72 hours after final application of sealer.
- L. Plywood slab protection in traffic corridors, entry ways, and areas to receive sealer shall be provided by and maintained by General Contractor throughout construction until the finishing contractor takes ownership of the floor. Protection shall be sufficient to protect surface from damage due to traffic and impact from any and all construction activities with a minimum of 1/2" plywood. All seams of plywood shall be sealed to eliminate passage of debris to new floor.
- M. Protect slab during masonry work and after completion of sealer work with minimum of 1/2-inch plyboard, with sealed seams.
- N. Upon completion of sealer, the General Contractor and the finishing subcontractor shall replace the plywood protection for the duration of the project.

3.05 MAINTENANCE

- A. Sealed floors should be maintained by sweeping. Spills should be cleaned when they occur and dirt shall be rinsed off with water. Heavily soiled areas may be wet-cleaned by mopping or by scrubbing with a rotary floor machine equipped with a scrubbing brush and a suitable, high quality commercial detergent. Interior floors that require polishing should be maintained using a compatible, premium-grade, emulsion-type, commercial floor polish, following manufacturer's instructions and safety requirements.

END OF SECTION

ISSUE	DATE
ISSUED FOR BID	2/16/24
 ADDENDUM 5	3/29/24
DRAWN BY:	DB
CHECKED BY:	SD



2. PROVIDE AND INSTALL FIRE DEPT. HOSE CONNECTIONS IN ACCORDANCE WITH NFPA 14 AND LOCAL CODE REQUIREMENTS.

- #### FIRE-STOP NOTES:



1. COORDINATE WITH ELECTRICAL. ELECTRICAL TO PROVIDE SHUNT TRIP TO INSURE THAT POWER TO ELEVATOR EQUIPMENT IS INTERRUPTED PRIOR TO ACTIVATION OF SHAFT SPRINKLERS.
2. PROVIDE SIDEWALL SPRINKLERS AT THE BOTTOM OF THE ELEVATOR SHAFT. PROVIDE INDICATING CONTROL VALVE WITH TAMPER SWITCH AND FLOW SWITCH ABOVE CEILING FOR THE SPRINKLER IN THE ELEVATOR SHAFT.
3. THE UPRIGHT SPRINKLER AT THE TOP OF THE ELEVATOR SHAFT IS NOT REQUIRED IF THE ELEVATOR AND SHAKT MEET ASME A 17.1 ELEV. SAFETY CODE.





ISSUE	DATE
ISSUED FOR BID	2.16.24
> ADDENDUM 5	3.29.24
DRAWN BY:	DB
CHECKED BY:	JSD

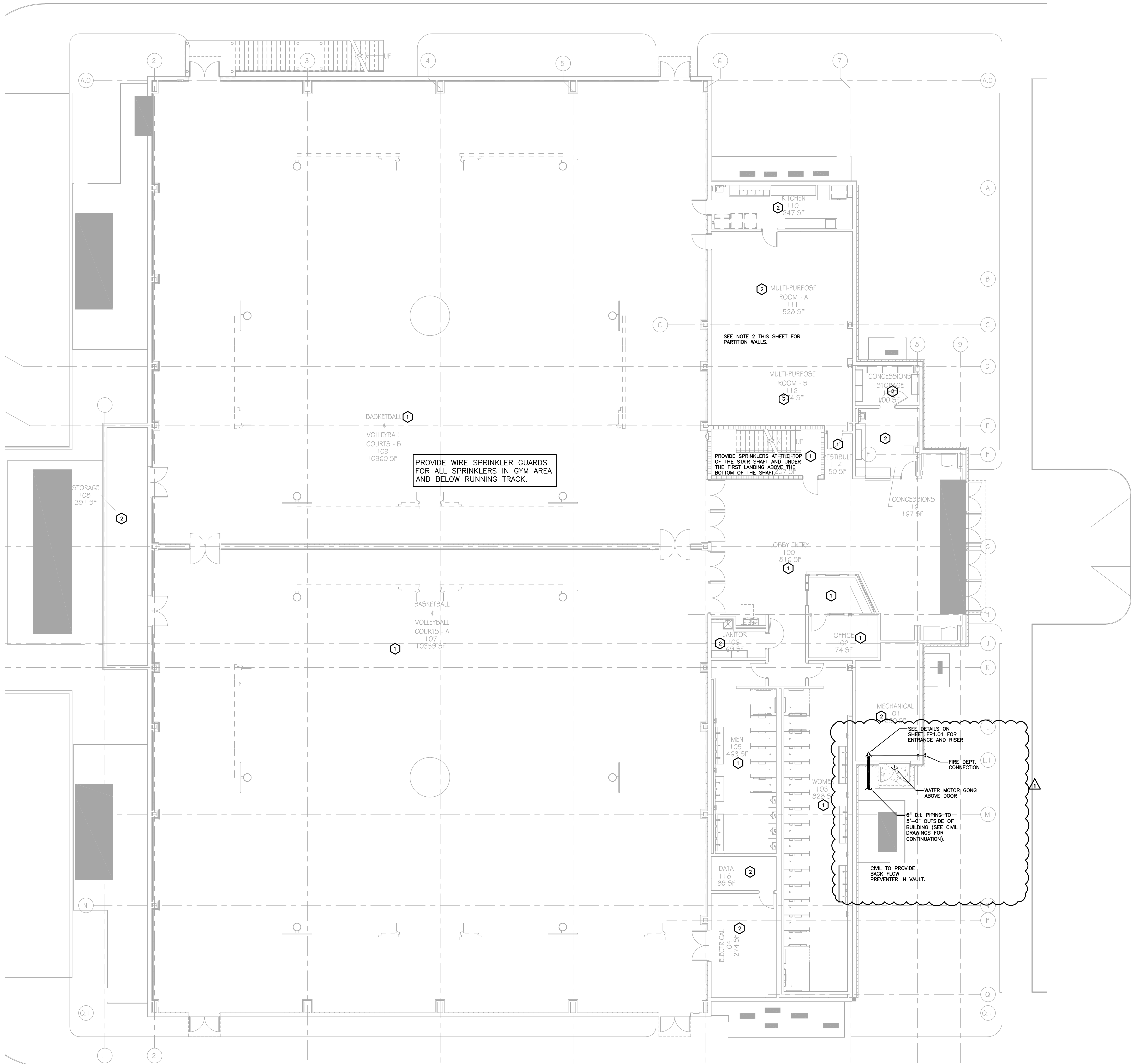
382 UNION HILL RD
LACEYS SPRING, ALABAMA 35754

A circular professional engineer seal for the state of Alabama. The seal features the text "ALABAMA" at the top, "No. 14178" in the center, "PROFESSIONAL" below the number, "ENGINEER" below "PROFESSIONAL", and "JAMES S. DAVIS, JR." at the bottom. The seal is surrounded by a dotted border. A signature is written across the seal, and the date "2/16/24" and the number "223184" are written below the seal.

FIRST FLOOR PLAN FIRE PROTECTION

10.1

GMC AHUN230008



1. SPRINKLER PIPING AND EQUIPMENT SHOWN ARE FOR REPRESENTATIONAL PURPOSES AND EXACT LOCATION AND QUANTITY MAY CHANGE DUE TO ACTUAL CONDITIONS. SPRINKLERS ARE TO BE PROVIDED AND LOCATED IN ACCORDANCE WITH NFPA 13, COORDINATE SPRINKLER LOCATIONS WITH ARCHITECT, LIGHTING AND HVAC.
2. COORDINATE SPRINKLER LOCATIONS WITH PARTITION WALLS AND PROVIDE PROPER COVERAGE FOR ROOMS WHEN PARTITION WALL IS OPENED AND OR CLOSED.
3. SMALL ROOM RULE DOES NOT APPLY TO ORDINARY HAZARD OCCUPANCIES.
4. ALL PRODUCTS USED SHALL BE MANUFACTURED IN THE U.S.A. AND ENDING BUT NOT LIMITED TO SPRINKLERS, SPRINKLER PIPING, FITTINGS, VALVES, SWITCHES AND ALL OTHER ITEMS USED IN THE FIRE PROTECTION SYSTEM.

KEYED NOTES

- 1 LIGHT HAZARD OCCUPANCY PROVIDE 0.10 DENSITY
- 2 ORDINARY HAZARD GROUP 1 OCCUPANCY PROVIDE 0.15 DENSITY

NOTE:
SMALL ROOM RULE DOES NOT
APPLY TO ORDINARY HAZARD
OCCUPANCIES.

PRE-BID REQUEST FOR INFORMATION FORM

Date: 03/28/2024
Company Submitting Request: Dominguez Design-Build, Inc.
Contact Name: Rafe Stewart Phone: (850) 390 - 4740
E-Mail rafe@ddbconstruct.com
Project Name: Morgan County Event Center
Architect Job No. GMC Architects Project # AHUN230008

RFI NO. 011

Please provide design of the stainless steel shelves found in the Concession Stand and in the Kitchen. Please provide more details on these items.

RESPONSE: **Stainless wall shelving for Kitchen and Concession spaces to be equal to Uline Stainless Steel Wall Shelf #H-7498 (double for required length.)**

For Architect's Use:
Reviewed By / Date: _____
Responded By/ Date: _____
Processed by Addendum No. 5
Comments: See attached.

Solid Stainless Steel Wall-Mount Shelving - 36 x 12 x 10"



Add extra storage above kitchen sinks, counters or prep areas.

- Solid, 16-gauge stainless steel.
- Type 304, NSF Certified.
- Includes mounting hardware.

Enlarge

MODEL NO.	DIMENSIONS W x D x H	CAPACITY (LBS.)	WT. (LBS.)	PRICE EACH		IN STOCK SHIPS TODAY	
				1	2+		
H-7498	36 x 12 x 10"	175	11	\$110	\$105	1	<input type="button" value="ADD"/>

EASY ASSEMBLY. SHIPS VIA UPS.

[Additional Info](#) [Shopping Lists](#) [Request a Catalog](#)

DIMENSIONS:

- Total Height with Wall Bracket: 10"
- Usable Shelf: 36 x 11 7/8" (W x D)
- Back Lip Height: 2"

FEATURES:

- Mount to drywall, wood and concrete.

Availability: [In Stock](#)
Unit Weight: 15 lbs.

[Instructions](#)

[Catalog Page 475](#)

[Email Item](#)

SAME DAY SHIPPING

HUGE SELECTION IN STOCK

SHIPS FROM 13 LOCATIONS

6.6 *American Rescue Plan Act Funding and State Law Requirements*

- 6.6.1 Section 13-31-9 of the Code of Alabama 1975 imposes conditions on the award of County Contracts, including grant projects. Firms must agree to fully comply with the Immigration Reform and Control Act of 1986, as amended by the Immigration Act of 1990, and the Beason-Hammon Alabama Taxpayer and Citizen Protection Act. By signing this contract, the contracting parties affirm, for the duration of the agreement, that they will not violate federal immigration law or knowingly employ, hire for employment, or continue to employ an unauthorized alien within the State of Alabama. Furthermore, a contracting party found to be in violation of this provision shall be deemed in breach of the agreement and shall be responsible for all damages resulting therefrom.
- 6.6.2 In compliance with Ala. Act No. 2023-409, by signing this contract, The Contractor provides written verification that the Contractor, without violating controlling law or regulation, does not and will not, during the term of the contract engage in economic boycotts as the term “economic boycott” is defined in Section 1 of the Act. This requirement applies to contracts entered into on or after October 1, 2023 if The Contractor employs 10 or more employees and the contract could exceed \$15,000 over the term of the contract. Under Section 2 of the Act, the written verification may be waived if the contracting governmental entity determines based on cost and quality factors that such a waiver is clearly in the best interest of the public.
- 6.6.3 The Contractor agrees to comply with the requirements of section 603 of the American Rescue Plan Act, Pub. L. No. 117-2 (March 11, 2021) (the “Act”), regulations adopted by Treasury pursuant to section 603(f) of the Act, codified as 31 C.F.R. Part 35, and guidance issued by Treasury regarding the foregoing.
- 6.6.4 Federal regulations which are applicable to this contract include, without limitation, the following:
- 1) Portions of the Uniform Administrative Requirements, Cost Principles, and Audit Requirements for Federal Awards, 2 C.F.R. Part 200 as Treasury has determined are applicable to the use of Revenue Replacement Funds. Pursuant to guidance from Treasury, compliance specifically includes obligations under § 200.203 to comply with the U.S. Constitution, federal statutes, regulations, and the terms and conditions of the ARPA award and to take prompt action in instances of non-compliance.
 - 2) OMB Guidelines to Agencies on Governmentwide Debarment and Suspension Non-procurement, 2 C.F.R. Part 180, including the requirement to include a term or condition in all lower tier covered transactions (contracts and subcontracts described in 2 C.F.R. Part 180, subpart B) that the award is subject to 2 C.F.R. Part 80 and Treasury’s implementing regulation at 31 C.F.R. Part 19.
 - 3) New Restrictions on Lobbying. The Contractor must certify that it will not, and has not, used federal appropriated funds to any person or organization for influencing or attempting to influence an officer or employee of any agency, a member of Congress, officer or employee of Congress, or an employee of a member of Congress in connection with obtaining any federal contract, grant, or any other award covered by 31 U.S.C 1352. Any the Contractor or subcontractor that will receive \$100,000 or more of federal grant funds must complete and provide the Byrd Anti-Lobbying Certificate.

- 4) Generally applicable federal environmental laws and regulations. The Contractor must comply with all applicable standards, orders, or regulations issued pursuant to the Clean Air Act (42 U.S.C. 7401-7671q) and the Federal Water Pollution Control Act as amended (33 U.S.C. 1251-1387). All violations must be reported to the County, Treasury, and the Regional Office of the Environmental Protection Agency.
- 5) Generally applicable anti-discrimination laws and regulations. This includes, but is not limited to, Title VI of the Civil Rights Act of 1964 (42 USC §§ 2000d, et seq.) and Treasury's implementing regulations at 31 C.F.R. Part 22, which prohibit discrimination on the basis of race, color, or national origin under programs or activities receiving federal financial assistance; the Fair Housing Act, Title VIII of the Civil Rights Act of 1968 (42 USC §§ 3601, et seq.), which prohibits discrimination in housing on the basis of race, color, religion, national origin, sex, familial status, or disability; Section 504 of the Rehabilitation Act of 1973, as amended (29 USC § 794), which prohibits discrimination on the basis of disability under any program or activity receiving federal financial assistance; the Age Discrimination Act of 1975, as amended (42 USC §§ 6101, et seq.), and Treasury's implementing regulations at 31 C.F.R. Part 23, which prohibit discrimination on the basis of age in programs or activities receiving federal financial assistance; Title II of the Americans with Disabilities Act of 1990, as amended (42 USC §§ 12101, et seq.), which prohibits discrimination on the basis of disability under programs, activities, and services provided or made available by state and local governments or instrumentalities or agencies thereto; and discrimination or retaliation against whistleblowers as provided in 41 USC § 4712.

Project #: AHUN230008
Project: Morgan County Event Center
Location: Lacey's Spring, AL

Updated: 3/28/24

REQUEST FOR INFORMATION LOG									
No.	Scope	Sheet or Spec	Note or Detail	Date Sent	Comment	Source	Discipline (Structural, Interior Design, etc.)	Architect / Owner Response	Addendum & Date
BID SET (2/15/23)									
1				2/29/2024	Will Simplex Fire Alarm System be allowed for this project? Please advise. The following items are missing from the Specification Manual:	Dominguez Design-Build	Electrical	No. You can submit a substitution to be considered.	
2				3/1/2024	Section 2.01- General Requirements G-01 3010: RFI Form G- 01 3020: Transmittal Form Section 2.07- Openings 08- Door Hardware Specs Section 2.13- Special Construction 13- Pre-Engineered Metal Building Specs	Carmon Construction	Architecture	See Addendum #1 for Div 13. You can submit RFIs on your own form. See Addendum #3 for Door Hardware Specification	
3				3/1/2024	After taking a look through the spec's, it looks like General Shale is a listed manufacturer (see 2.02 BRICK UNITS). Do you know if the architect has a specific face style in mind besides it being a velour?	General Shale	Architecture	No. You can submit a substitution to be considered.	
4				3/1/2024	We have only made a quick review of the specs, but it appears that there are a few sections missing. Can you provide a spec on Door Hardware, Bleachers and Pre-Engineered Metal Building. These are not in our set. Also, our printer is having issues with printing the specs. There are numerous blank pages in the set. We don't want to miss a page. Normally if a page is left blank, theres a note saying that. I'll follow this up with an official RFI **NO Official RFI as of 03/01/24	Consolidated Construction Company	Architecture	See Addendum #1 for PMB Spec See Addendum #3 for Hardware Spec	
5				3/4/2024	Sitework not included with Proposal Will the building pad will be ready at the proper elevation when we mobilize?	Dominguez Design-Build		The Owner will bring the site/pad to subgrade. After that it is the responsibility of the bidder.	
6				3/4/2024	1. Is there an official RFI Form to be used for Pre-Bid RFIs? The specs Table of Contents lists one but we are unable to locate the form in the specs. 2. Please provide specifications for Pre-Engineered Metal Building. 3. Please provide specifications for Metal Canopy. 4. Please provide Finish Hardware specification. 5. Please provide detailed description of NIC sitework and what sitework is in the contract. 6. Spec section 064000 – can the AWI certifications be waived? 7. Please provide detail and/or elevation specification for vinyl HVAC fence shown on sheet A1.01.	Limestone Building Group	Architecture	You can send RFIs on your form or by email. See Addendum 1 for PMB spec and site work clarification. The fence spec and detail is in Addendum 2. See Addendum 3 for Metal Canopy Spec and Door Hardware No on waving AWI See Addendum #2 for fence detail	
7				3/4/2024	Any idea if they would want stormwater monitoring and monthly aerial progress photography included?	GTEC Corp		No.	
8				3/6/2024	On sheet E101 there is a box with designation "S3" in the middle of the primary electrical conduit path. There is no detail or schedule with that symbol in it. Please advise.	Dominguez Design-Build	Electrical	Elec Eng: This is an s3 sectionizing cabinet. (Basically a utility box.) It would usually be by the utility company but installed by contractor. This utility company has not coordinated yet. So it could not be needed.	
9				3/6/2024	• Sheet C-101 shows 18' Curb & Gutter around perimeter of project as well as parking islands and next to the building. Which curbs & gutters will be part of this bid package? • Sheets C-101 and C-102 indicate concrete paving at handicap parking spaces only. Is that concrete paving to be included in the previous bid package or this package? If it's part of this package, will asphalt paving be completed up to the areas shown as concrete paving? • Downspout boots are specified in Section 05500 Metal Fabrications but splash blocks are shown throughout Architectural plans. Please advise. • Steel Bollards are specified in Section 05500 Metal Fabrications but the location is unclear. Please advise. • Fabric- Covered Sound- Absorbing Units are specified in Section 098430 but we are unable to locate. Please advise. • Protective Wall Covering is specified in section 102600 but we are unable to located. Please advise. • There is some uncertainty regarding application and location of Weather Barriers 072500 and Air Barriers 072700. Please clarify locations for each. • Please provide specifications for Vinyl Fencing. • Please provide base plate size for columns at 3/4/5-G on sheet S2.01	Carmon Construction		All curb and gutters shown shall be in the bid. Civil Eng: The plans have been updated to show 24" curb and gutter. All curb and gutter shown will be included in this bid package. The concrete paving will be included in this bid package. Concrete for sidewalks and HC parking is the responsibility of the bidder. Weather and air barriers shall be at masonry walls. Other walls are responsibility of the PMB Mfr. Protective wall coverings are required between the exit doors in the lobby. Metal Building Manufacturer will provide base plate sized for their columns at 3/4/5-G. Fencing spec is in addendum 2 See revised sheet C1-02 -Addendum #3 for bollard locations See Addendum #2 for fence spec and detail Base plate size shall be by metal building designer	2 3/15/2024
10				3/7/2024	Please confirm the height of the Exterior Signage. It is scaling at 14" Please confirm the dimensions of the dedication plaque. The specs reference to see details in Conditions of the Contract, we can not find any information in the general conditions of the contract.	Building Construction Association		Plaques shall be cast bronze 20"x30", information for the plaques will be provided during the shop drawing phase Exterior letters shall be 12' from finished sidewalk to B.O.L.	
11				3/7/2024	Please provide spec section for the Pre-Engineered Metal Building.	Dominguez Design-Build		See Addendum 1	
12				3/7/2024	Please provide specification for Bleachers.	Limestone Building Group		See Addendum 2	
13				3/7/2024	Is spec section 098430 applicable to this job? None found on drawings.	Limestone Building Group		Not Applicable	
14				3/7/2024	Sheet A8.01 calls out EPX-1 in restrooms. Finish Legend on sheet A8.03 does not show and EPX-1. Please advise.	Limestone Building Group		Change all EXP1 to EF-1 , see Addendum #3	
15				3/7/2024	Sheet A1.01 Keynote 10 indicates 8.5" metal studs. Metal stud standard sizes are 8" and 10". Is 8.5" correct? Will the PEMB components take care of this wall type? Please clarify.	Limestone Building Group		It is 8. See revised wall type sheet Addendum 2	
16				3/7/2024	Sheet A1.01 Keynote 11 – where brick veneer occurs full height at the entrance of the building, are we to assume that these walls will be built using 8" metal stud framing? Drawings show what looks to be in fill framing in between the PEMB purlins. Please clarify.	Limestone Building Group		No infill framing between purlins. Masonry walls shall be constructed with 8" studs. See revised partition type Addendum #3	
17				3/7/2024	Sheet A1.01 Detail H2 shows brick approximately 4' tall along the front of the building. Is metal stud framing required for this, or will the brick be tied off of the metal building wall sheets? If metal framing is required, will a revised wall section be provided?	Limestone Building Group		Tie off of metal building wall	
18				3/7/2024	What finish will go behind the safety pads at OL-1 column wrap framing?	Limestone Building Group		RFI 15, #4 – PNT-3 wraps columns per elevations on sheets A7.04 & A7.05	
19				3/8/2024	Please provide documentation A101-2017, Exhibit A, Insurance and Bonds.	Dominguez Design-Build		An AIA101 -2017 Owner/General Contractor document will be provided as a draft to the accepted low bidder for review. Insurance requirements shall be as required by the State of Alabama	
20				3/11/2024	What bid bond form are we to use?	Lee Builders		The Bid Bond/Security is a portion of the proposal form on pages 3 & 4	
21				3/12/2024	I couldn't find any specification section for the Pre-Engineered metal building	Alliance Steel, Inc.		See Addendum 1	
22				3/12/2024	Provide elevation/frame/glazing type for interior glazed unit tagged as "36" at 102 Office. Ref Docs: A1.01	Cooper Construction		See Addendum #3 Door Hardware spec	
23				3/12/2024	Provide pre-engineered building spec, including a spec for the interior liner panels	Cooper Construction		The PMB spec is in Addendum #1.	
24				3/12/2024	Provide a fire protection specialties spec	Cooper Construction		See Addendum #3	
25				3/12/2024	Provide a Basis of Design for paper towel dispenser TA-03. Ref Docs: 10 2800	Cooper Construction		See revised specification in Addendum #3	
26				3/12/2024	Fabric-wrapped acoustical panels are not called out on the drawings. Is spec 098430 applicable to this project? If yes, provide locations. Ref Docs: 09 8430	Cooper Construction		Section is not applicable	
27				3/12/2024	Clarify the scope of section 2.04, <i>Floor Mounted Equipment</i> , including the quantity of nets, posts and floor sleeves (for both volleyball and pickleball), as well as the quantity of floor anchors for portable gymnasium equipment. Ref Docs: 11.6623	Cooper Construction		4 Volley ball nets with appropriate anchors & sleeves for each. 4 pickle ball nets with anchors	
28				3/12/2024	Provide a spec for the sliding pocket door called out at opening 36	Cooper Construction		See Addendum #3 Door Hardware	
29				3/12/2024	Provide a vinyl fence spec	Cooper Construction		See Addendum #2	
30				3/12/2024	Review/Revise Attachment A to align with this project: Items 1-11 are assumed to be by Morgan County. Subs for these trades would not be engaged by the GC	Cooper Construction		The Owner will bring the site to subgrade. Any additional requirements for the building pad would be responsibility of the bidders including repair of subgrade due to the bidders work.	
31				3/12/2024	Review/Revise Attachment A to align with this project: Item 13: Provide basis-of-design for VCT (does not appear in the base bid scope of work)	Cooper Construction		There is no VCT on this project	
32				3/12/2024	Review/Revise Attachment A to align with this project: Items 22-23: Clarify interior or exterior door and frames	Cooper Construction		Doors and frames should be part of the base bid	
33				3/12/2024	Review/Revise Attachment A to align with this project: Items 24-25: Need more info or basis-of design (these do not appear in the base bid scope of work)	Cooper Construction		Items 24 & 25 are not applicable	
34				3/12/2024	Review/Revise Attachment A to align with this project: Items 26-27: Need a minimum quantity to base this off of (these do not appear in the base bid scope of work)	Cooper Construction		Items 26 & 27 are not applicable	
35				3/13/2024	Provide wood species, book/end-matching requirements, construction parameters, and field-finishing requirements (i.e. painted or stained?) for wood doors	Cooper Construction		Provide flat cut stain grade birch. Stain color TBD	
36				3/13/2024	Per Sheet C-101, Mass Grading, Utilities, Asphalt Pavement, and Striping are under separate contract. Confirm whether or not Erosion Control BMPs per Sheet C-601 will also be under separate contract.	Cooper Construction		BMPs are still required	
37				3/13/2024	Drawings call out RB-1 rubber base at courts. Specs call for Robbins 3" x 4" vented base. Which is correct? Ref Docs: A8.03 Per Finish Note on Sheet A8.03, wall base is to be installed on all walls....U.N.O. Per sheet A7.02, elevations B1, D6, F6, J6, and B9 shall receive wall tile, and all remaining walls in 103 Women and 105 Men will receive tile base only. Confirm if this is correct and, if only tile base is needed, confirm requirement of a matching tile base, or else to utilize cut field tile/ Schluter	Cooper Construction		Courts to receive VB-1. 103 Women and 105 Men are to receive Epoxy Base on all walls per finish legend and schedule.	
38				3/13/2024	Spec 01 4000 refers to individual spec sections for mock up requirements, but Tiling spec 09 3000 refers back to spec 01 4000. Confirm to what extent (i.e. size) wall and/or floor tile mock-ups are required, and whether or not these will be in-place mock ups	Cooper Construction		4' x4'	
39				3/13/2024	Provide Resilient Flooring spec	Cooper Construction		See Addendum #3	
40				3/13/2024	Provide an AIA Additions/Deletions report for the altered AIA A101 and AIA A201 provided in the project manual	Cooper Construction		Clean, unedited, and updated documents will be provided to the accepted bidder as a draft for review	
41				3/14/2024	Note 15 references tap, meter, connection fees by contractor. Confirm this is by utility contractor (under separate contract). If this is required to be carried by the GC, provide either an allowance to carry, or provide a site utility drawing	Cooper Construction		County will pay fees for utility taps and meters.	
42				3/14/2024	Provide geotech report, or provide an allowance for the presence of rock for footing excavation	Cooper Construction		See report in Addendum #3	
45				3/15/2024	Please provide a specification on the pre-engineered metal building insulation.	Consolidated Construction Company		By the metal building manufacture/supplier	
46				3/15/2024	Section 05500 calls for downspout boots. Sheet A3.01 appears to call for splash blocks (SB). We do not have in our sets a storm plan that shows any downspout boots or what they tie to. Please clarify.	Consolidated Construction Company		Downspout boots are required and all down spouts shall be tied to subgrade storm. You will have to coordinate with the Owner	
47				3/15/2024	There are no details of the exterior set of stairs. Are they a pan type filled with concrete or a grating type tread? Are they to be galvanized or painted?	Consolidated Construction Company		Pan filled concrete and metal stairs are delegated design and will be reviewed during the shop drawing phase	
48				3/15/2024	The wood floor specifications call for Bio Channel SB (anchored resilient system) and the plans call for Bio Cushion Classic (floating, double layer plywood). Can you please confirm which one we should price? We would recommend Bio Channel SB since it is anchored.	Greer Building Contractors		Bio Channel SB-See revised sheets Addendum #3	
49				3/19/2024	Unit prices do not match Scope of Work.	Chase Building Group		See revised form.	
50				3/19/2024	List of Substitutions does not match Scope of Work.	Chase Building Group		See list of accepted substitutions.	
51				3/19/2024	Please allow for steel companies to bid on this project that follows AISC requirements but are not AISC certified. This will help with more competitive pricing for the steel.	Dominguez Design-Build		No.	
52				3/19/2024	Request for Daikin Applied to be approved to bid controls (HVAC) on this project.	Daikin Applied		Mech. Eng: We are ok with Daiken Applied bidding controls for Morgan County Center.	
53				3/20/2024	Here is another question regarding utility taps and meters. Please advise if this is you or repositibility of the GCs.	Morgan County Engineering Dept.		County will pay fees for utility taps and meters.	
54				3/20/2024	In the RFI log, item 43, you answered your question regarding downspout boots. We will provide the downspout boots as specified. But without a storm layout drawing with pipe sizes, no piping from the boot to the pipe provided by the County will be included. We will assume the County will bring the piping up to the boot.	Morgan County Engineering Dept.		GMC Civil is supposed to do daylight sownspouts through sidewalk turndown or curb to parking lot. Would probably be a good idea to have a several extra capped pipes in case water issues develop. The county will not be providing a storm drain pipe.	
55				3/20/2024	Note on A2.01 at the center wall says, "Divider Curtain". Please clarify.	Morgan County Engineering Dept.		Don't think that's our question.	
56				3/20/2024	Is the County providing the topsoil replacement? If not, are they stockpiling topsoil onsite or should we figure offsite topsoil?	Morgan County Engineering Dept.		County is not providing topsoil. Any usable onsite topsoil will be used for the septic field.	
57				3/20/2024	The only landscaping shown is on sheet C-601 that notes, "permanent seeding". Please provide specification.	Morgan County Engineering Dept.		GMC Civil provided that note. The county would prefer emerald zoysia sod. Assume there are exterior water faucets.	
58				3/20/2024	Is the County obtaining ADEM permit since they are providing the site work?	Morgan County Engineering Dept.		County is getting the ADEM permit.	

59			3/20/2024	Should they provide the erosion control since they will be starting work before a contract is obtained by the GC?	Morgan County Engineering Dept.		County will provide exterior erosion control. Contractor is responsible for erosion control and maintenance for their construction area.	
60			3/20/2024	Is it likely that the County will compete the sitework before a GC starts work?	Morgan County Engineering Dept.		Unlikely that all work in the parking area will be completed.	
61			3/21/2024	Is testing by the GC or the Owner?	Greer Building Contractors		Owner.	
62			3/21/2024	Spec Section 012100 says that there is an allowance for testing but there isn't.	Greer Building Contractors		Owner providing test. No allowance required.	
63			3/21/2024	Per Spec section 3.01, how many Procore user licenses are the GC required to carry?	Cooper Construction		Not tied to Procore but should be equ. GC carries the license & shall include GMC& our consultants as reviewers/ approvers.	
64			3/21/2024	Per spec section 2.04, is a plaque required? If yes, what size?	Cooper Construction		Yes, 24x30" cast bronze. Details to be worked out in submittal phase.	
65			3/22/2024	Please provide chain link and gates spec section.	Dominguez Design-Build		Not in project.	
66			3/25/2024	We would like to request a Drainage Plan in order to know how many inlet tops are proposed for curb and gutter pricing.	BCA General Contractors		Owner: "We are planning 8 open outlets that will drain to an open drainage ditch. The outlet would be paid for as linear curb and gutter since it has two two curb and gutter sections."	Addendum 5
67			3/26/2024	Provide product or Basis-of-Design for sealed concrete SC-1	Cooper Construction		See 03 3660 sealed concrete attachment.	Addendum 5
68			3/26/2024	The plans (as per ADD #3) calls for sheathing, 5/8" PT Plywood at the Brick Veneer locations only & Dens glass at the metal panels. RFI #15 states that there will be no infilling of metal framing between the Girts. The Girts are 4 feet apart horizontally and we will need some sort of support between the Girts to attach our sheathing to, on the exterior as well as on the interior side, which will have drywall. Please reference "Wall Sections on page A5.11, detail A8, which shows infilling of interior studs between girts at the Concessions Storage only, which should be typical for all locations receiving sheathing or drywall. Can you please advise on how we should proceed with this instance?	Cooper Construction		Correct, all ext walls shall receive infill studs between girts, and batt insulation with R-Value to be determined by PMB manufacturer. See revised sheets and attachments for clarification.	Addendum 5
69			3/26/2024	What is the height of interior (3 5/8") furred columns at the Basketball & Volleyball courts, with wall tag OL-1/3.5? Will it be full height 30' from AFF, or will it go to the underside of the running track at 16' and from the running track to underside of deck approximately another 16'? Also, the drywall in this location is specified as an interior fire rated board. Will you require abuse boards in this location as well?	Cooper Construction		Per Structural Engineer: "These columns are part of the metal building frame so we do not know exactly how they will be framed. Our assumption is that they will be one piece full height of the building to support the metal building roof frame. The mezzanine beams will frame into the side of these columns." Fire-rated gyp only in ELECTRICAL RM 104, and DATA 118. See revised Partition Types. Abuse (impact resistant) gyp only in LOBBY ENTRY 100.	Addendum 5
70			3/26/2024	There is a detail to provide metal framing and drywall at the underside of the scissor stairs on page A5.23, details H10, E10 & A10. Is the intention to frame the underside of the full stairs or just the underside of the intermediate landing and the top portion of the stair only?	Cooper Construction		Just as shown, at the landings (intermediate and top portion,) yes.	Addendum 5
71			3/26/2024	Keynotes – Floor Plan - #9 on page A1.01, calls for abuse boards in the Lobby. Am I to assume that all walls in 'Lobby Entry' space #100 will require abuse boards? If not, please specify the locations?	Cooper Construction		Yes, all walls in LOBBY ENTRY 100.	Addendum 5
72			3/26/2024	Are we to provide furring at the interior side of the stairwells as well? The IMG partition type shows furring on one side only; however, the CMU wall is tagged on both sides. Please advise how to proceed?	Cooper Construction		No, furring is only on the outside of the stairwell CMU. See revised A1.01 First Floor Plan.	Addendum 5
73			3/26/2024	Please confirm that there is no drywall at the interior side of the OL/12 wall, where there is 2" metal perforated panels in the Basketball & Volleyball courts (A&B).	Cooper Construction		Yes, correct. (As shown in OL 12, G1.22) Only in Kitchen, Multipurpose Rooms.	Addendum 5
74			3/26/2024	Are there any drywall on the interior side on the Multipurpose room Space #111 A & #112 B, on the OL/12 walls? Plans indicate that it is a 2" perforated prefinished metal panels. Please advise.	Cooper Construction		Perforated metal panel is only in the courts. Yes, drywall in Multipurposes rooms.	Addendum 5
75			3/26/2024	Spec book under the "Gypsum Assemblies" mention "Bullet Resistant boards," are we required to provide this type of boards and if so, can you help providing locations where this will occur?	Cooper Construction		No bullet-proof resistant boards in project.	Addendum 5
76			3/26/2024	Please provide spec section or basis of design for the metal shelving called out in the concession area on page A7.01	Dominguez Design-Build		Stainless wall shelving for Kitchen & Concessions to be equal to Uline steel wall shelf #H-7498, see attached. (double to meet required design lengths.)	Addendum 5
77			3/27/2024	Please provide revised unit pricing that is noted in addendum #4 item 49.	Dominguez Design-Build		see attached revised unit price sheet.	Addendum 5
78			3/27/2024	Does the county already have a contract in place with a company for the HVAC controls or if we can use anyone? Please advise.	Dominguez Design-Build		No. They do not require a typical vendor. They have used Trane controls at most their locations.	Addendum 5
79			3/28/2024	How do we drain water from the aluminum canopy on sheet A5.22?			The canopy is delegated design and the drainage shall be by the canopy designer/ fabricator.	Addendum 5
80			3/28/2024	Section 230500 appears to require HVAC subcontractors to have a full time Mechanical PE on staff. Please advise if this is required?			No. The design of HVAC systems provided in shop drawings or submittals will require: a mechanical engineer.	Addendum 5
81			3/28/2024	Is the VIP panel in roof details required?			No. Provide rigid poly-iso per spec equal to R-30	Addendum 5
82								
83								