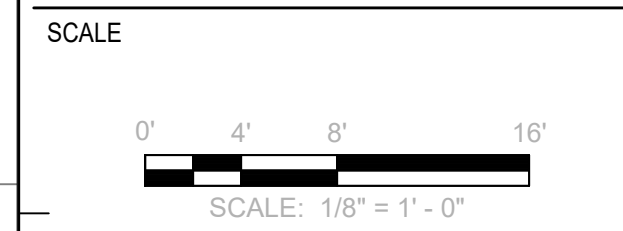


Winton Engineering, P.A.
 Robin Winton, P.E.
 2201 WOODBINE DR
 TALLAHASSEE, FL 32309
 850-894-5316
 FL 56206

ROBIN WINTON, P.E. 56206

PRELIMINARY



REVISIONS

NO.	DESCRIPTION	DATE

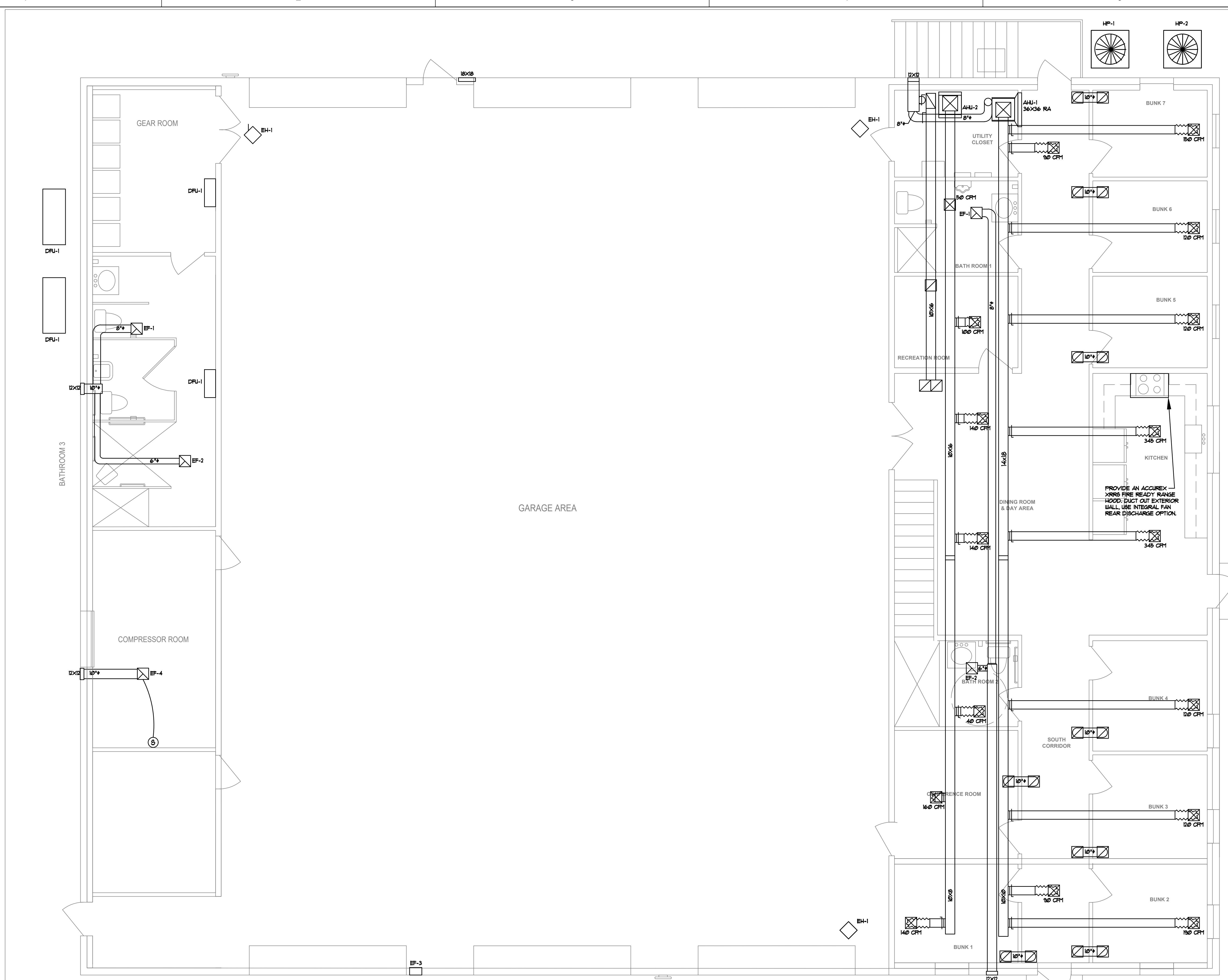
DRAWN BY _____ RPW
 APPROVED BY _____ RPW
 CHECKED BY _____ RPW
 DATE _____ AUGUST 2023

TITLE
MECHANICAL PLAN

PROJECT NO. _____ 50150622

M2.0

SHEET NO.



MECHANICAL PLAN
 SCALE: 1/4" = 10'

ROBIN WINTON, STATE OF FLORIDA, PROFESSIONAL ENGINEER, LICENSE NO. 56206. THIS ITEM HAS BEEN DIGITALLY SIGNED AND SEALED BY ROBIN WINTON ON THE DATE INDICATED HERE. PRINTED COPIES OF THIS DOCUMENT ARE NOT CONSIDERED SIGNED AND SEALED AND THE SIGNATURE MUST BE VERIFIED ON ANY ELECTRONIC COPIES.

4/30/2024 1:28:58 PM D:\WINTON\ENGINEERING\JOBS\20230202\32-52- GLENDALE FIRE STATION - DEWBERRY\WPSHEETS.DWG