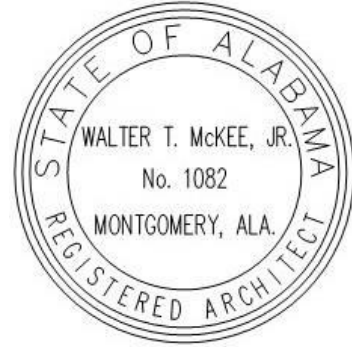


Addendum No. 2
Date: June 25, 2024



Project:

**NEW ADMINISTRATION BUILDING AT
RED BAY HIGH SCHOOL
FOR THE FRANKLIN COUNTY BOARD OF EDUCATION
RUSSELLVILLE, ALABAMA**

**MCKEE PROJECT NO. 23-251
ALABAMA DIVISION OF CONSTRUCTION MANAGEMENT NO. 2024019**

The following changes and/or substitutions to the plans and specifications are hereby made a part of same and are incorporated in full force as part of the contract.

Bidders shall acknowledge receipt of this Addendum in writing on the Proposal Form.

A2.1 GENERAL MODIFICATIONS:

- A. Refer to the **Advertisement for Bids**, **Change** as follows:
 - 1. The sealed proposal as described above shall be received by Mr. Greg Hamilton, Superintendent, Franklin County Schools, 500 Coffee Avenue NE, Russellville, AL 35653 | Phone: (256) 332-1360, until **2:00 PM, Thursday, July 18, 2024**, then publicly opened and read aloud.

A2.2 SPECIFICATION MODIFICATIONS:

- A. None.

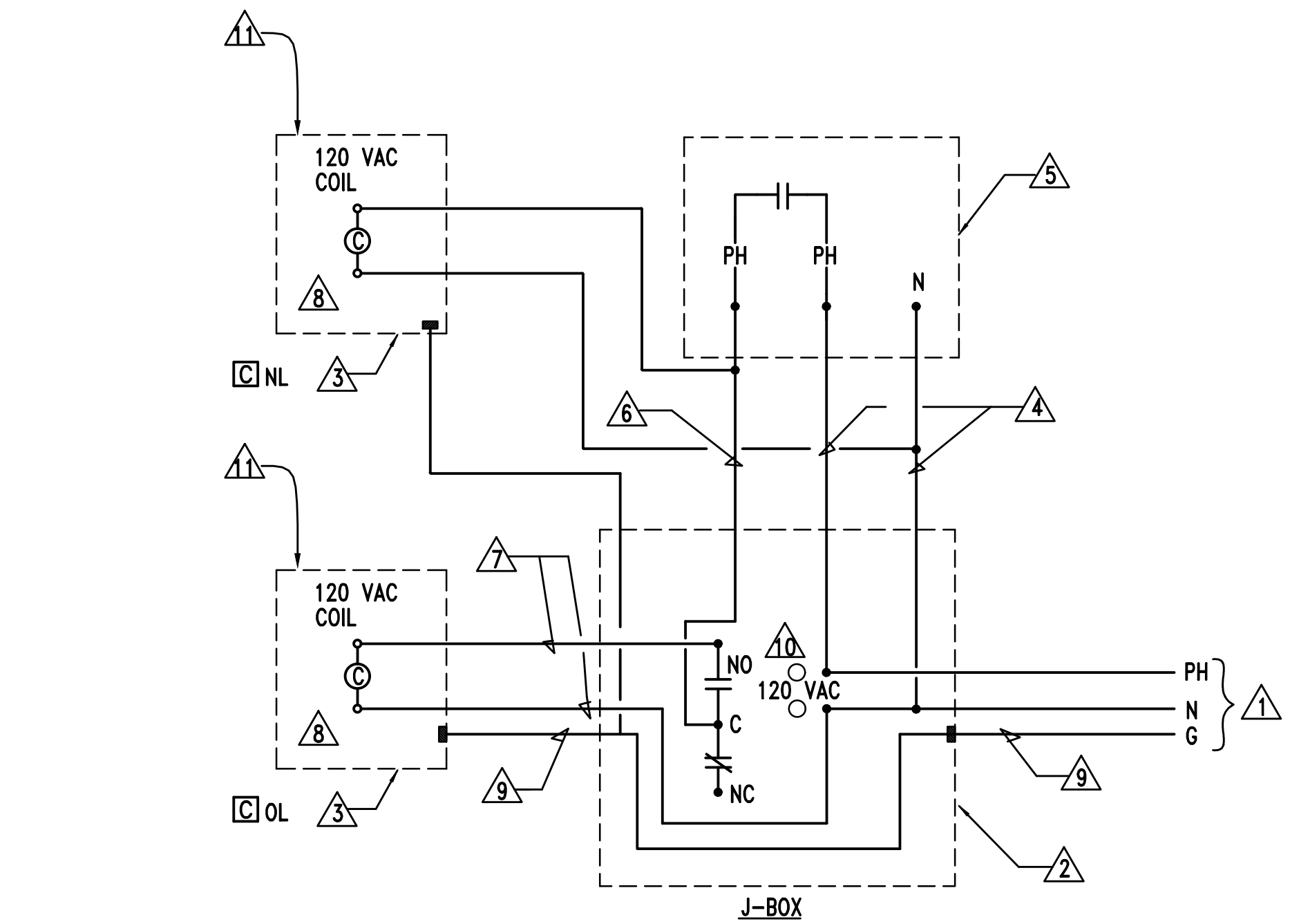
A2.3 DRAWING MODIFICATIONS:

- A. Replace electrical sheets **E2.1, E3.1, E5.1, E7.1** with revised electrical sheets attached.

A2.4 CLARIFICATIONS & RESPONSES:

- A. None

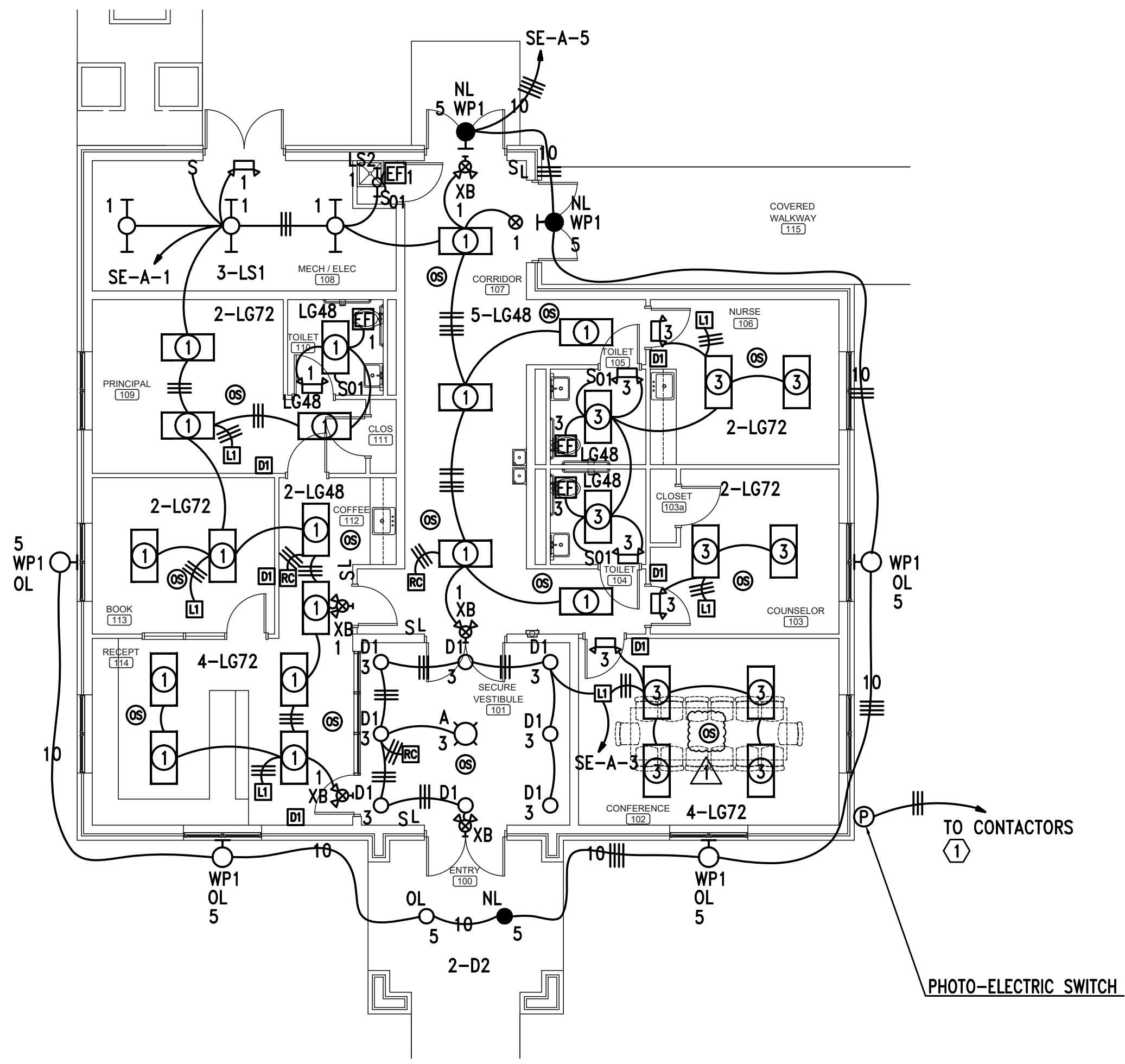
END OF ADDENDUM



2 DETAIL - TYPICAL OPERATION OF TIME SWITCH/PHOTO-CELL/CONTACTOR
NO SCALE

KEYED NOTES

- 1 POWER SUPPLY - 120V, 1PH, 60HZ
- 2 TIME SWITCH ENCLOSURE - NEMA 1 UNLESS NOTED OTHERWISE
- 3 CONTACTOR ENCLOSURE - NEMA 1 UNLESS NOTED OTHERWISE
- 4 POWER TAP TO PHOTO-CELL IN GRC
- 5 TURN-LOCK PHOTO-CELL, SEE DETAIL
- 6 SWITCH LEG RETURN IN GRC
- 7 POWER TO CONTACTOR COIL
- 8 LIGHTING CONTACTOR NL & OL AS FOLLOWS:
 - NEMA ICS 2-211B INDUSTRIAL DUTY TYPE
 - ELECTRICALLY OPERATED-ELECTRICALLY HELD
 - RATING AND NUMBER OF POLES INDICATED
 - CONTACTS SHALL BE SILVER ALLOY, DOUBLE-BREAK, SUITABLE FOR TUNGSTEN, BALLAST LIGHTING, RESISTANCE AND MOTOR LOADS
 - FUSING FOR CONTROL CIRCUIT
- 9 GROUND CONDUCTOR - BOND TO EACH ENCLOSURE AND INSTALL IN EACH CONDUIT SYSTEM
- 10 DIGITAL TIME SWITCH AS FOLLOWS:
 - ONE CHANNEL WITH 24 HOUR, SEVEN DAY PROGRAMMING AND SKIP-A-DAY FEATURE
 - INPUT: 120 VAC, 60HZ
 - OUTPUT: DPST DRY CONTACTS (UNPOWERED)
 - HEAVY DUTY CONTACTS RATED 20 AMPERE RESISTIVE AT 120 VAC
 - TEMPERATURE RANGE: -20 TO +60 DEGREES CELSIUS
 - RELATIVE HUMIDITY: 0 TO 90% RH
 - CLOCK ACCURACY: ±2 MINUTES PER YEAR
 - LED INDICATION OF TIME AND LOAD STATUS
 - FULL WEEK'S RESERVE POWER (BATTERY BACK-UP)
- 11 PROVIDE NUMBER OF POLES REQUIRED.



1 FLOOR PLAN - LIGHTING
SCALE: 1/8"=1'-0"

GENERAL NOTES:

- 1. PROVIDE DEDICATED NEUTRALS FOR EACH MULTIWIRED HOMERUN PER NEC.
- 2. COORDINATE WITH LIGHTING CONTROL DETAILS FOR ADDITIONAL REQUIREMENTS.
- 3. SEE LIGHTING CONTROL DETAILS ON SHEET E2.2 FOR ADDITIONAL REQUIREMENTS.

SHEET NOTES:

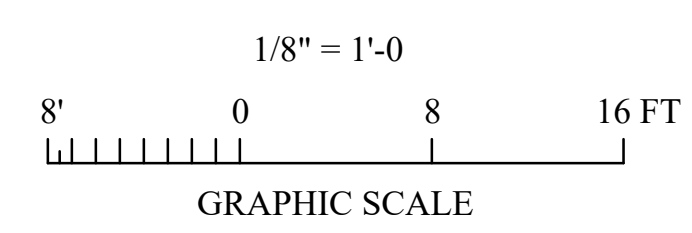
- 1. ROUTE EXTERIOR LIGHTING CIRCUITS THRU CONTACTORS AS SHOWN IN DETAIL 3. "NL" DESIGNATES LIGHTS ARE PHOTOCELL ON/PHOTOCELL OFF. "OL" DESIGNATES PHOTOCELL ON/TIMECLOCK OFF.

ROOM CONTROLLER NOTES:

- 1. CONTRACTOR SHALL LOCATE ALL ROOM CONTROLLERS ABOVE DOORS IN EACH ROOM 6" ABOVE CEILING GRID. PROVIDE ACCESS PANELS WHERE LOCATED ABOVE HARD CEILINGS OR MOUNT IN UTILITY TYPE ROOMS WHENEVER POSSIBLE. ROOM CONTROLLERS SHOWN ON THIS PLAN IS DIAGRAMMATIC FOR CIRCUITRY. DO NOT USE THESE FOR ACTUAL LOCATIONS. PROVIDE A WHITE PHENOLIC LABEL WITH 1" BLACK TEXT THAT READS "RC" GLUED ON CEILING GRID UNDER POWER PACK FOR EACH LOCATION FOR FUTURE MAINTENANCE.

PHOTOCONTROL OF LIGHTING:

- 1. PHOTOCONTROL OF LIGHT FIXTURES WILL NOT BE REQUIRED FOR THE AREAS ON THIS PAGE. THE PRIMARY SIDELIGHTED AREA WILL NOT HAVE WATTAGES EXCEEDING 150W.



Gunn & Associates, P.C.
Consulting Engineers
3102 Highway 14
Millbrook, AL 36054
Tel: 334.285.1273
1200 Providence Park, Suite 200
Birmingham, AL 35242
GA#24-007

NEW ADMIN BUILDING
AT
RED BAY HIGH SCHOOL
FOR THE
FRANKLIN COUNTY BOARD OF EDUCATION



SHEET TITLE : FLOOR PLAN - LIGHTING

MCKEE JOB # : 23-251

DRAWN BY : J. TILLERY

DATE : 05.18.2024

REVISED DATE : 06-24-2024

REVISED DATE :

REVISED DATE :

SHEET NO. : E2.1

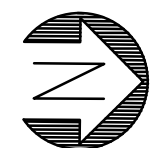
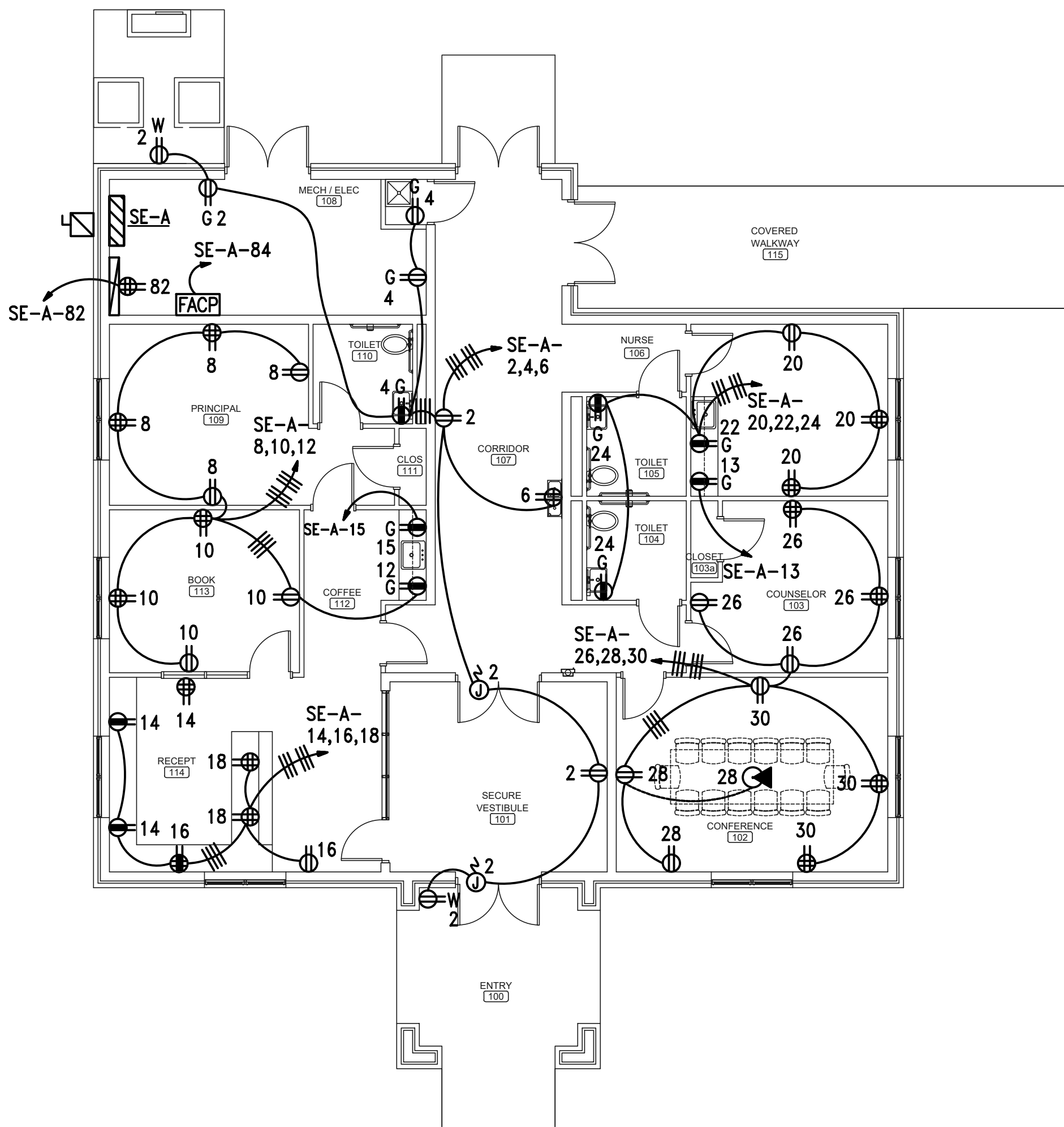
MCKEE and ASSOCIATES
ARCHITECTS, INC.
631 SOUTH HULL STREET MONTGOMERY, ALABAMA 36104 (334) 834-9933

GENERAL NOTES:

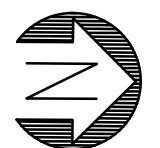
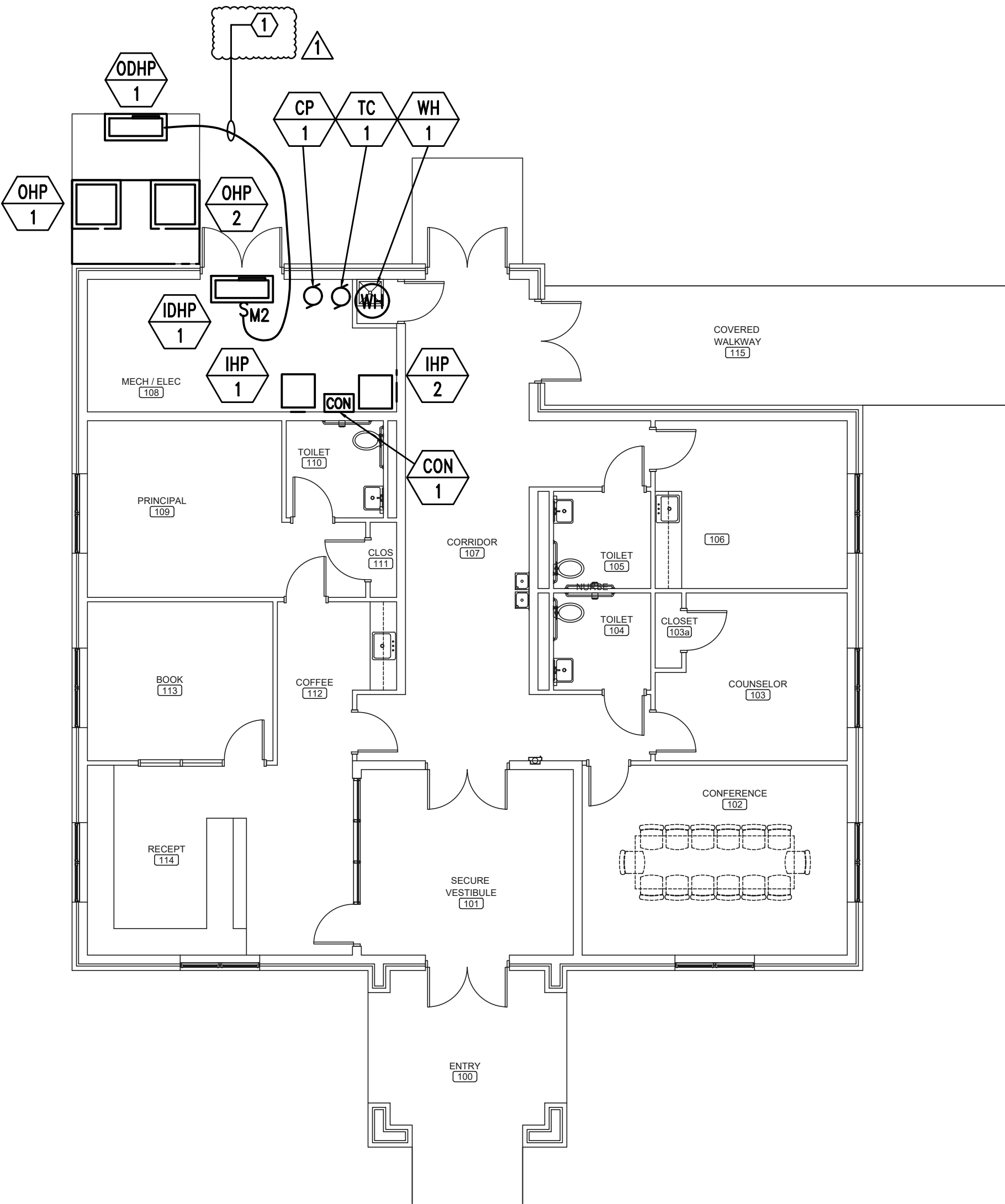
1. PROVIDE DEDICATED NEUTRALS FOR EACH MULTIWIRED HOMERUN PER NEC.
2. COORDINATE EXACT LOCATION OF ALL ELECTRICAL AND COMMUNICATIONS DEVICES WITH MILLWORK PROVIDERS PRIOR TO ROUGH-IN.
3. ALL DISCONNECTS TO HAVE NAMEPLATE AS SHOWN IN DETAIL, NO EXCEPTIONS.
4. ALL RECEPTACLE CIRCUITS THAT ARE ROUTED UNDERGROUND SHALL BE STUBBED UP ABOVE CEILING IN AN ACCESSIBLE LOCATION FOR FUTURE USE.
5. THE OWNER TAKES EXCEPTION TO THE FOLLOWING SECTIONS OF 2013 ASHRAE 90. SECTION 8.4.2 AUTOMATIC RECEPTACLE CONTROLS AND SECTION 8.4.3 ELECTRICAL ENERGY MONITORING. THESE REQUIREMENTS WILL NOT BE PROVIDED IN THIS PROJECT.

SHEET NOTES:

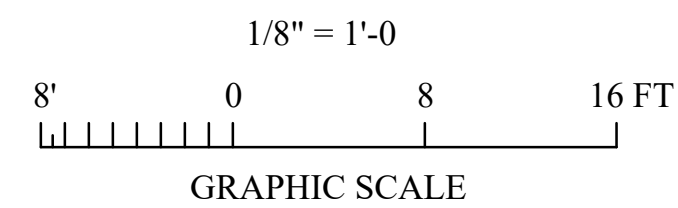
- ① INTERIOR UNIT RECEIVES POWER FROM THE EXTERIOR UNIT. PROVIDE INTERCONNECTING CIRCUITRY AS NEEDED IN CONDUIT TO CONNECT THE INTERIOR UNIT.



1 FLOOR PLAN - POWER
SCALE: 1/8"=1'-0"



2 FLOOR PLAN - MECHANICAL POWER
SCALE: 1/8"=1'-0"



Gunn & Associates, P.C.
Consulting Engineers
3102 Highway 14
Millbrook, AL 36054
Tel: 334.285.1273
1200 Providence Park, Suite 200
Birmingham, AL 35242
GA#24-007

SHEET TITLE : FLOOR PLAN - POWER

MCKEE JOB # : 23-251

DRAWN BY : J. TILLERY

DATE: 05.18.2024

REVISED DATE: 06-24-2024

REVISED DATE:

REVISED DATE:

SHEET NO. : E3.1

NEW ADMIN BUILDING
AT
RED BAY HIGH SCHOOL
FOR THE
FRANKLIN COUNTY BOARD OF EDUCATION

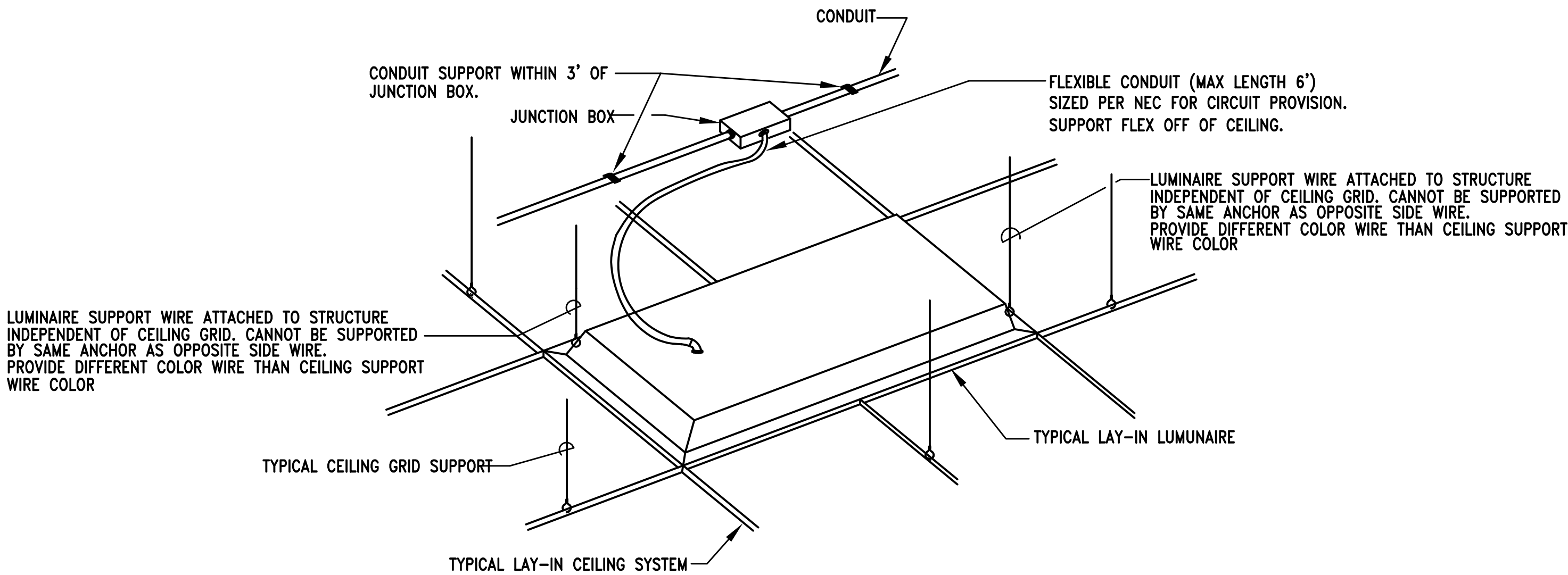
MCKEE and ASSOCIATES
ARCHITECTS, INC.
631 SOUTH HULL STREET MONTGOMERY, ALABAMA 36104 (334) 834-9933



LIGHTING FIXTURE SCHEDULE						
TYPE:	MANUFACTURER NUMBER AND EQUALS:	VOLTAGE:	MOUNTING:	LAMP TYPE:	LAMP QUANTITY:	DESCRIPTION:
A	MANNING LIGHTING NO. DP-292-XX-B129-40-0-10-120-WH-CBL OR EQUALS BY WILLIAMS, LUMAX, OR COOPER	MVOLT	PENDANT	LED	5091 LUMENS 3710 LUMENS	LED PENDANT MOUNT BOWL FIXTURE WITH UP/DOWN LIGHT. PROVIDE WITH AIRCRAFT CABLE. 0-10V DIMMING.
D1	PRESCOLITE NO. LTR-8ED-H-ML-DM1-LV-EMR-XL-40K-8-WD OR EQUALS BY WILLIAMS, LUMAX, OR COOPER	MVOLT	RECESSED	LED	3000 LUMEN	6 INCH 3000 LUMEN LED DOWNLIGHT 4000K TEMPETURE LAMPS AND FEATURE REMOTE PHOSPHOR TECHNOLOGY ENABLING A HIGH SYSTEM EFFICACY AND MINIMUM 80 CRI. 0-10V DIMMING
D2	PRESCOLITE NO. LTR-6RD-H-ML-20L-DM1-LTR-6RD-T-ML-40K3MDSWT OR EQUALS BY WILLIAMS, LUMAX, OR COOPER	MVOLT	RECESSED	LED	2000 LUMEN	6 INCH 2000 LUMEN LED DOWNLIGHT 4000K TEMPETURE LAMPS AND FEATURE REMOTE PHOSPHOR TECHNOLOGY ENABLING A HIGH SYSTEM EFFICACY AND MINIMUM 80 CRI. WET LOCATION
LG48	HUBBELL NO. LCAT-24-40K-ML-G-ED-MVOLT OR EQUALS BY WILLIAMS, LUMAX, OR COOPER	MVOLT	RECESSED	LED	5000 LUMEN	2'X4' 5000-LUMEN VOLUMETRIC FIXTURE. 0-10V DIMMING CAPABLE.
LG72	HUBBELL NO. LCAT-24-40K-VL-G-ED-MVOLT OR EQUALS BY WILLIAMS, LUMAX, OR COOPER	MVOLT	RECESSED	LED	7200 LUMEN	2'X4' 7200-LUMEN VOLUMETRIC FIXTURE. 0-10V DIMMING CAPABLE.
LS1	HUBBELL NO. LCL-4-40K-ML-E-MVOLT OR EQUALS BY WILLIAMS, LUMAX, OR COOPER	MVOLT	SURFACE OR CHAIN HUNG	LED	5000 LUMEN	SURFACE MOUNTED 4'-0" LED STRIP. CHAIN HANG WHEN SURFACE MOUNT IS NOT POSSIBLE.
LS2	HUBBELL NO. LCL-2-40K-ML-E-MVOLT-WIREGUARD OR EQUALS BY WILLIAMS, LUMAX, OR COOPER	MVOLT	WALL WELDING BOOTH	LED	2850 LUMEN	SURFACE MOUNTED 2'-0" LED STRIP WITH WIREGUARD. CHAIN HANG WHEN SURFACE MOUNT IS NOT POSSIBLE.
WP1	HUBBELL NO. QSP-30L-4000K-I53-TYPE 3-U-COLOR BY ARCH - SCP-20F OR EQUALS BY WILLIAMS, LUMAX, OR COOPER	MVOLT	WALL	LED	5700 LUMEN	DARK BRONZE EXTERIOR LED LIGHT. UL LISTED FOR WET LOCATIONS.
EM WALL PACK	COMPASS NO. CU2HLHSD - WIREGUARDS IN GYM OR PRIOR APPROVED EQUAL BY EMERGH-LITE, MCPHLBEN, OR PRESCOLITE	MVOLT	WALL	LED	1000 LUMEN	1000 LUMEN LED EMERGENCY WALL PACK.
EXIT SIGN COMBO "XB"	DUAL-LITE NO. EVCHLUPW12-06L OR PRIOR APPROVED EQUAL BY EMERGH-LITE, MCPHLBEN, OR PRESCOLITE	MVOLT	UNIVERSAL	LED	1000 LUMEN	THERMOPLASTIC 1000-LUMEN COMBO LED EXIT SIGN EGRESS LIGHT. PROVIDE WITH NUMBER OF FACES AND DIRECTIONAL ARROWS AS SHOWN ON DRAWINGS. COORDINATE COLOR OR SIGNAGE WITH LOCAL REQUIREMENTS. PROVIDE WITH EMERGENCY BATTERY. PROVIDE WIREGUARDS IN GYM.
NOTES: 1. ARCHITECT RESERVES THE RIGHT TO SELECT ALL COLORS OR MAKE CUSTOM COLOR DURING SHOP DRAWING REVIEW. BID ACCORDINGLY. 2. COORDINATE MOUNTING OF ALL LUMINAIRES WITH ARCHITECTURAL ELEVATIONS PRIOR TO INSTALLATION. 3. PROVIDE EMERGENCY BATTERY BALLAST FOR ALL EMERGENCY TYPE FIXTURES CAPABLE OF 90 MINUTES. ALL EMERGENCY LIGHTS IN SAFE AREA SHALL BE CONNECTED TO THE BATTERY INVERTER FOR 180-MINUTES OF RUN TIME. 4. FOR WARRANTY AND LONG TERM SUPPORT FOR OWNER, ALL LIGHTING FIXTURES SHALL BE PURCHASED THROUGH MANUFACTURER REPRESENTATIVES LOCATED IN THE STATE OF ALABAMA. SUBMITTALS RECEIVED THAT DO NOT COMPLY WITH THIS REQUIREMENT WILL BE REJECTED WITHOUT REVIEW. THE ELECTRICAL CONTRACTOR SHALL BE RESPONSIBLE FOR ANY DELAYS CAUSED BY NON COMPLIANCE WITH THIS REQUIREMENT. 5. ALL INTERIOR LIGHTS SHALL HAVE 4000K TEMPETURE LAMPS. UNLESS NOTED OTHERWISE. 6. ALL EXTERIOR LIGHTS SHALL HAVE 4000K TEMPETURE LAMPS.						

NOTES:

- ALL RECESSED LUMINAIRES SHALL BE WIRED FROM A JUNCTION BOX AS SHOWN, INCLUDING LUMINAIRES IN A CONTINUOUS ROW. NO WIRING THRU FIXTURES. NO MORE THAN TWO LUMINAIRES SHALL BE CIRCUITED TO ONE JUNCTION BOX.
- LUMINAIRE SUPPORT WIRES TO BE A MINUMUM OF #14 GAGE PRE-STRAINED GALVINIZED WIRE ATTACHED AT OPPOSITE CORNERS. LUMINAIRE SHALL BE SUPPORTED TO THE STRUCTURE INDEPENDENT OF THE CEILING GRID.
- CONDUCTORS IN FLEXIBLE CONDUIT FROM JUNCTION BOX TO LUMINAIRE SHALL CONTAIN AN INSULATED GREEN GROUND WIRE, WITH NEUTRAL AND PHASE CONDUCTORS REQUIRED FOR THE CIRCUITING AND SWITCHING REQUIREMENTS INDICATED.
- JUNCTION BOXES SHALL BE ACCESSIBLE AND LOCATED WITHIN 1'-6" ABOVE LAY-IN CEILING INSTALLATION. PROVIDE PENDANT ALL-THREAD RODS AND/OR STRUT ASSEMBLIES TO MEET THIS REQUIREMENT WHERE DROP CEILING IS MORE THAN 1'-6" FROM STRUCTURE.
- CONTRACTOR SHALL INSTALL ALL T-BAR SAFETY CLIPS TO GRID. IF FIXTURE DOES NOT COME WITH GRID SAFETY CLIPS, THEN THE CONTRACTOR SHALL PROVIDE SUPPORT WIRES ON ALL FOUR SIDES.



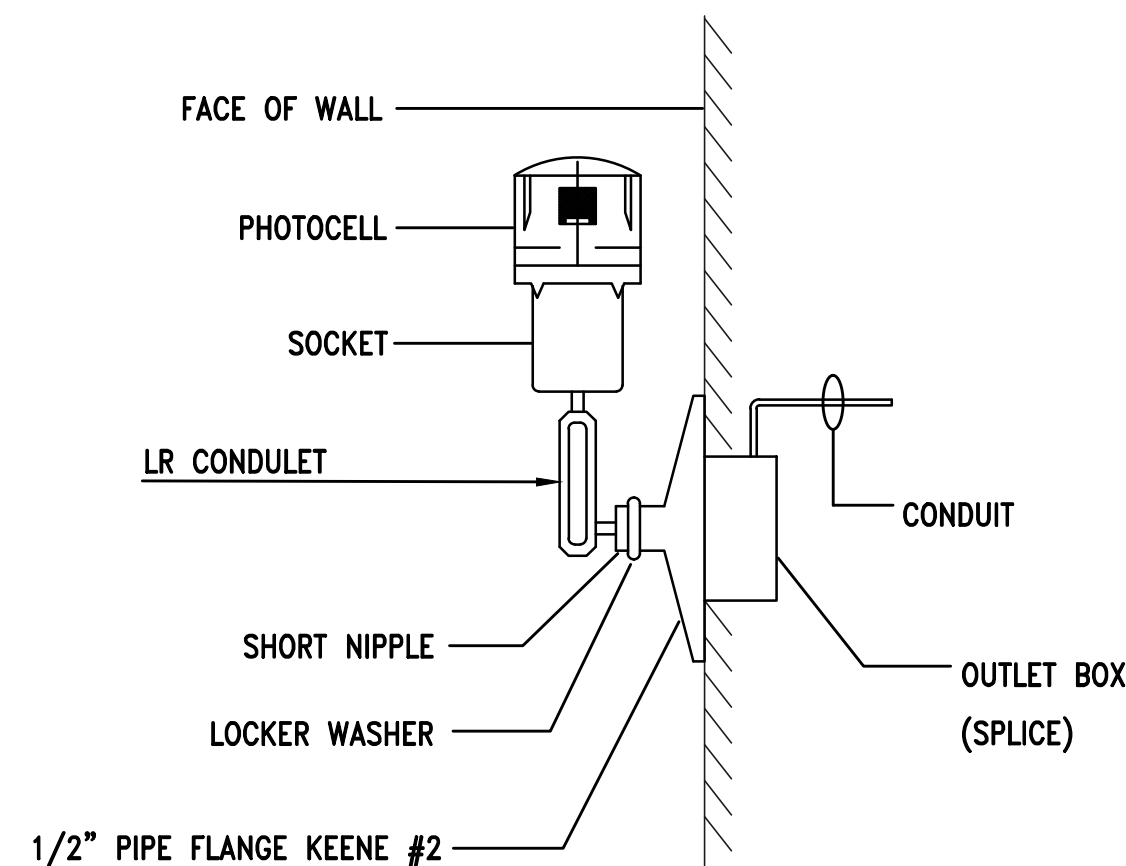
1
ES.1
NO SCALE
DETAIL - TYPICAL LAY-IN LUMINAIRE INSTALLATION

LUMINAIRE NOTES:

- ALL LUMINAIRES AND INSTALLATION SHALL BE IN ACCORDANCE WITH NEC, NFPA AND LOCAL CODES. ALL LUMINAIRES SHALL BE UL LISTED AND INSTALLED IN ACCORDANCE WITH THE UL LISTING.
- LUMINAIRES SHALL BE FURNISHED COMPLETE WITH THE PROPER LAMP BASE OR PIN RECEPTORS, WIRING COMPONENTS, LAMPS, SUPPORTING FRAMES AND DEVICES, ETC., FOR A COMPLETE INSTALLATION.
- ALL LUMINAIRE DEVICES, COMPONENTS, FITTINGS, SUPPORTS, ETC., SHALL BE COORDINATED TO PROVIDE A COMPLETE UL LISTED INSTALLATION
- ALL LUMINAIRES BALLAST, DRIVERS, LAMPS, ETC SHALL BE COMPATIBLE WITH THE LIGHTING CONTROL SYSTEM OR DIMMING CONTROL SYSTEM PROVIDED.
- SECURE EACH LAY-IN LUMINAIRE AT TWO LOCATIONS TO THE CEILING GRID. PROVIDE BOLTS, SCREWS, RIVETS OR APPROVED CLIPS FOR USE WITH THE TYPE CEILING AND LUMINAIRE INSTALLED.
- ALL LUMINAIRES IN MECHANICAL AND ELECTRICAL ROOMS SHALL BE INSTALLED TO CLEAR ELECTRICAL EQUIPMENT, DUCT, PIPING, ETC., SUSPEND BELOW OBSTRUCTION WHEN CONFLICTS OCCUR.
- ALL LED LUMINAIRES SHALL BE PROVIDED WITH 4000K COLOR TEMPERATURE LAMPS, UNLESS NOTED OTHERWISE.
- ARCHITECT RESERVES THE RIGHT TO SELECT ALL COLORS FOR LUMINAIRES, POLES, MOUNTING ACCESSORIES, ETC. DURING SHOP DRAWING REVIEW.
- COORDINATE LUMINAIRE MOUNTING WITH ARCHITECTURAL ELEVATIONS PRIOR TO INSTALLATION.
- ALL EXIT SIGNS AND LUMINAIRES DESIGNATED AS EMERGENCY SHALL BE PROVIDED WITH A MINIMUM 1100 LUMEN EMERGENCY BATTERY BALLAST CAPABLE OF 90 MINUTES OF ILLUMINATION. X DESIGNATION MEANS DIFFERENT TYPE BATTERY SEE SCHEDULE.
- CONTRACTOR SHALL PROVIDE ALL SLOPE ADAPTERS, FLANGE KITS, TRIMS, AND ALL OTHER MOUNTING ACCESSORIES AS NEEDED TO MOUNT EACH LUMINAIRE IN CEILINGS AS SHOWN. COORDINATE WITH ARCHITECTURAL REFLECTED CEILING PLANS.
- PROVIDE ALL EXIT SIGNS WITH DIRECTIONAL ARROWS AS SHOWN ON DRAWINGS.

NOTES

- PAINT CONDUIT NIPPLE, SOCKET AND PIPE FLANGE WITH TWO COATS OF ENAMEL.
- COMPLETE ASSEMBLY TO BE UL LISTED FOR WET LOCATIONS.
- PHOTOCELL TO BE MOUNTED FACING NORTH FREE FROM ALL SHADOWS WHICH MIGHT CAUSE PHOTOCELL TO TURN LIGHTS ON EARLY. CONTRACTOR SHALL COORDINATE PROPER MOUNTING LOCATION PRIOR TO INSTALLATION.



2
ES.1
NO SCALE
DETAIL - INSTALLATION OF PHOTO-CELL

Gunn & Associates, P.C.
Consulting Engineers
3102 Highway 14
Millbrook, AL 36054
Tel: 334.285.1273
1200 Providence Park, Suite 200
Birmingham, AL 35242
GA#24-007

SHEET TITLE : LIGHTING SCHEDULE,
DETAILS & NOTES

MCKEE JOB # : 23-251

DRAWN BY : J. TILLERY

DATE: 05.18.2024

REVISED DATE: 06-24-2024

REVISED DATE:

REVISED DATE:

SHEET NO. : E5.1

NEW ADMIN BUILDING
AT
RED BAY HIGH SCHOOL
FOR THE
FRANKLIN COUNTY BOARD OF EDUCATION

MCKEE and ASSOCIATES
ARCHITECTS, INC.

631 SOUTH HULL STREET MONTGOMERY, ALABAMA 36104 (334) 834-9933



POWER RISER DIAGRAM NOTES:

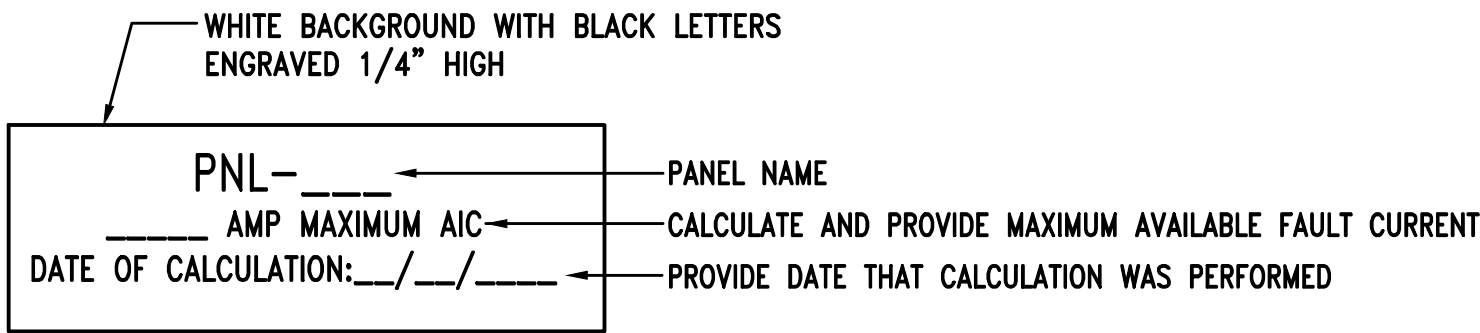
1. INSTALLATION AND CONNECTION OF ALL DEVICES SHALL BE IN ACCORDANCE WITH NEC, MANUFACTURER'S RECOMMENDATIONS, AND STATE AND LOCAL CODES.
2. CONTRACTOR IS RESPONSIBLE FOR THE CONNECTING, INSTALLATION, AND MARKING OF ALL POWER FEEDER CONDUCTORS FOR THE PROPER PHASE SEQUENCE AND LOADING . CONTRACTOR SHALL TEST EACH FEEDER AND EQUIPMENT FEEDERS WITH A PHASE METER PRIOR TO CONNECTING LOADS.
3. THE CONTRACTOR IS RESPONSIBLE FOR COORDINATING AND VERIFYING WITH ALL DIVISIONS THE ACTUAL NAMEPLATE DATA OF ALL EQUIPMENT AND DEVICES SUPPLIED ON THIS PROJECT PRIOR TO BID. CONTRACTOR SHALL THEN PROVIDE THE PROPERLY SIZED OVERCURRENT DEVICES (CIRCUIT BREAKERS, CONDUCTORS, DISCONNECTS, FUSES, ETC.) TO PROPERLY PROTECT THE EQUIPMENT PER THE NEC. ENGINEER'S DESIGN BASED ON DATA GIVEN TO HIM BY DESIGNERS OF OTHER DIVISIONS, ACTUAL NAMEPLATE DATA COULD DIFFER.
4. SEAL ALL CONDUITS FROM THE EXTERIOR WITH A SEALING COMPOUND, ONCE ALL CABLING HAS BEEN INSTALLED.
5. COORDINATE WITH GROUNDING DETAILS ON SHEET E7.1 FOR ALL THE DIFFERENT TYPE GROUNDING REQUIREMENTS.
6. ALL UNDERGROUND SECONDARY FEEDERS SHALL BE A MINIMUM OF 36" BELOW GRADE TO THE TOP OF THE DUCT BANK.
7. ALL UNDERGROUND PRIMARY FEEDERS SHALL BE A MINIMUM OF 48" BELOW GRADE TO THE TOP OF THE CONDUIT.
8. CONTRACTOR SHALL PROVIDE A FULL SIZE COPY OF THE AS-BUILT POWER RISER DIAGRAM FRAMED BEHIND PLEXIGLASS SCREWED TO THE WALL NEAR MAIN SERVICE PANEL.

SHEET NOTES:

- ① CONNECT TO EXISTING TRANSFORMER. NEW BAND BUILDING TO BE METERED WITH OTHER BUILDINGS BEING FEED BY TRANSFORMER.

NOTES:

1. CONTRACTOR SHALL CALCULATE AND PROVIDE NAMEPLATE ON THE SERVICE ENTRANCE EQUIPMENT THAT INDICATES THE MAXIMUM AVAILABLE FAULT CURRENT AND THE DATE THE CALCUALTION WAS PERFORMED. SEE NAMEPLATE REQUIREMENTS BELOW.

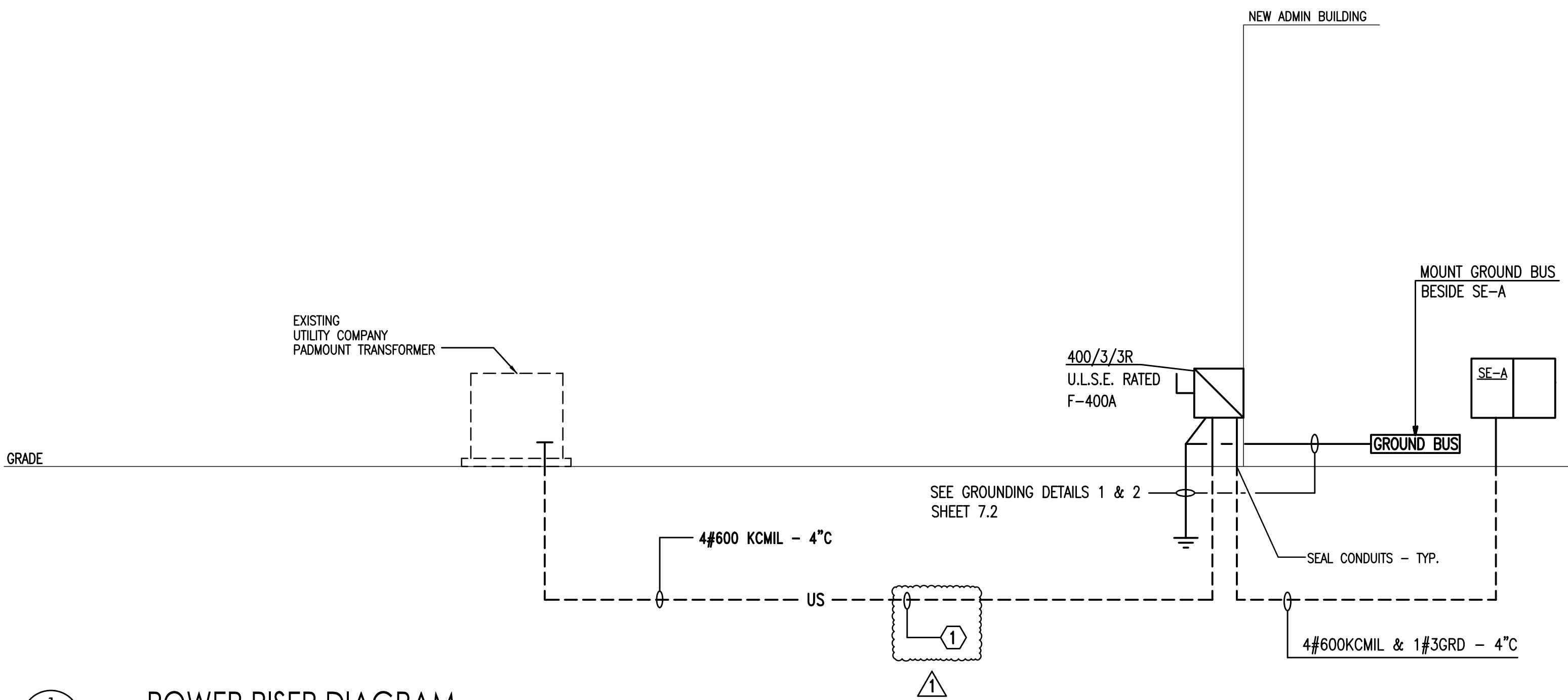


TYPICAL SERVICE ENTRANCE FAULT CURRENT NAMEPLATE

2
E7.1

DETAIL - SERVICE ENTRANCE FAULT CURRENT NAMEPLATE

NO SCALE



1
E7.1

POWER RISER DIAGRAM

NO SCALE

Gunn & Associates, P.C.
Consulting Engineers

3102 Highway 14
Millbrook, AL 36054
Tel: 334.285.1273

1200 Providence Park, Suite 200
Birmingham, AL 35242
GA#24-007

SHEET TITLE : POWER RISER DIAGRAM,
DETAILS, & NOTES

MCKEE JOB # : 23-251

DRAWN BY : J. TILLERY

DATE: 05.18.2024

REVISED DATE: 06-24-2024 ⚠

REVISED DATE:

REVISED DATE:

SHEET NO. : E7.1

NEW ADMIN BUILDING
AT
RED BAY HIGH SCHOOL
FOR THE
FRANKLIN COUNTY BOARD OF EDUCATION

MCKEE and ASSOCIATES
ARCHITECTS, INC.
631 SOUTH HULL STREET MONTGOMERY, ALABAMA 36104 (334) 834-9933

