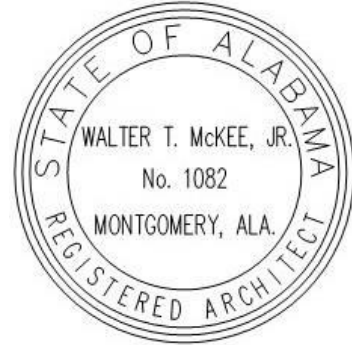


**Addendum No. 2**  
**Date: October 03, 2024**



Project:  
**Addition to Linden High  
School for the Linden City  
Board of Education  
Linden, Alabama**

**MCKEE PROJECT NO. 22.315**  
**ALABAMA DIVISION OF CONSTRUCTION MANAGEMENT NO. 20240569**

The following changes and/or substitutions to the plans and specifications are hereby made a part of same and are incorporated in full force as part of the contract.

Bidders shall acknowledge receipt of this Addendum in writing on the Proposal Form.

**A2.1 GENERAL MODIFICATIONS:**

- A. Refer to the **Advertisement for Bids**, **Change** as follows:
1. Sealed proposals as described above shall be received by Dr. Timothy Thurman, Superintendent, Linden City Schools, 209 North main Street, Linden, Alabama 36748, Ph: 334-295-8802, **until 2:00 PM Central Time, Thursday, October 17, 2024**, then opened and read aloud.

**A2.2 SPECIFICATION MODIFICATIONS:**

- A. NONE.

**A2.3 DRAWING MODIFICATIONS:**

- A. See the attached Revised Drawings as follows:
1. Sheet A8.1 dated 10.01.24, herein.

**A2.4 CLARIFICATIONS & RESPONSES:**

- A. See the following responses to RFI questions received from Contractors.

**Question:** On C2 the asphalt company noticed there is light grey color and a dark grey color (highlighted in yellow outline). Please confirm there is only 1 kind of asphalt build up and not a light duty and heavy duty paving requirement for this project.

**Answer:** The hatches should've been the same color. There is only one asphalt buildup.

**Question:** Please provide Geotech report.

**Answer:** See Addendum no. 1.

**Question:** Please clarify if the owner is wanting tension wire at bottom of fence or top, middle and bottom rail they call for both in chain link fencing and gates 02831.

**Answer:** Top, Middle, and Bottom Rail.

**Question:** Is there an available Phase I and Phase II of site available?

**Answer:** No. Phasing is on A1.0

**Question:** Is there available existing foundation and elevation of floors on the existing building to be removed available?

**Answer:** there are no existing plans available.

**Question:** Is there a footer schedule/layout for S1.1 Foundation which references S2.1 Detail schedule?

**Answer:** See drawing S0.1 for Footing Schedule.

**Question:** On page A8.1, please confirm whether Window A, B and D are Storefront or Window. Window C is the Fema Tornado Window.

**Answer:** See revised sheet A8.1 Included herein.

**Question:** There is also a discrepancy on Window "D" and Storefront "D" location on the drawings. There are 2 elevations marked as "D". Please advise.

**Answer:** See revised sheet A8.1 Included herein.

**Question:** What is the correct Aluminum Storefront spec to follow, there is an aluminum storefront impact wind resistant spec section 08001 as well as a aluminum storefront spec section 08410.

**Answer:** Section 08001 is for the tornado "windows" and 08410 is for all other storefront.

**Question:** The canopy company has informed me that their engineer may require us to attach gussets to the back of the columns to add some extra support for the cantilever canopy on plan page A4.4. Will this be allowed?

**Answer:** Yes, as long as they match the ones on the front of the columns.

**Question:** Please Provide the size of the roof drainage on sheet C4. These feeds run from structures to roof downspouts, no size provided. Please advise.

**Answer:** All downspout connections shall be 6" piping (PVC or HDPE) with 6" fittings.

**Question:** Reference the Civil Sheets. Please provide a Legend. Is the light gray hatch standard duty asphalt and the darker gray hatch heavy duty asphalt? If so, please provide the build-ups. Is the crosswalk shown at the NW of the site existing or new? Please provide a spec for the downspout boots. No H/C parking signs are shown on the plans, but there is a detail shown (I assume there are two required).

**Answer:** There is no difference in the paving. The provided asphalt pavement detail should be used for all proposed paving. The mentioned crosswalk is existing. Downspout Boots are to be PVC type as specified in Section 2720 Storm Sewers. Yes, please provide signage for the two HC Spaces.

**Question:** Reference Sheet G1.0. Please clarify the jumbled text in Access Room 144.

**Answer:** "AREA 810 SF. OCC 41, & "WORK STATION PROVIDED BY OWNER"

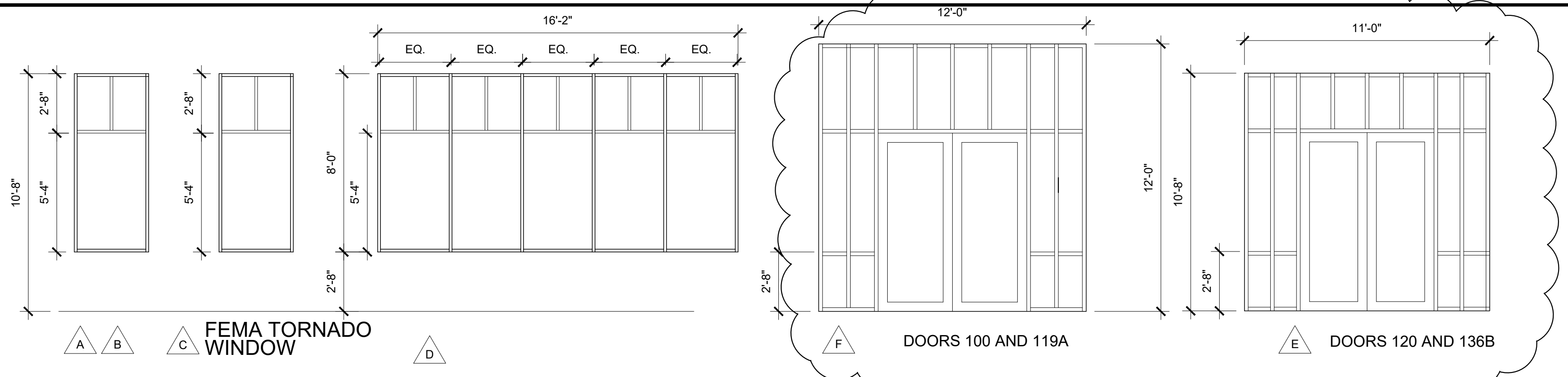
**Question:** Please clarify any Landscaping required by the GC.

**Answer:** No landscaping required by GC, Just Re-Sod all disturbed areas.

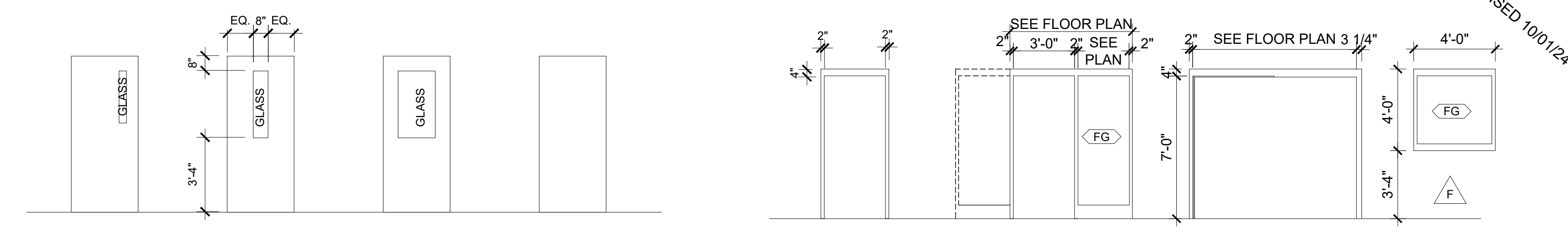
B. See the following clarifications as follows:

1. N/A

**END OF ADDENDUM**

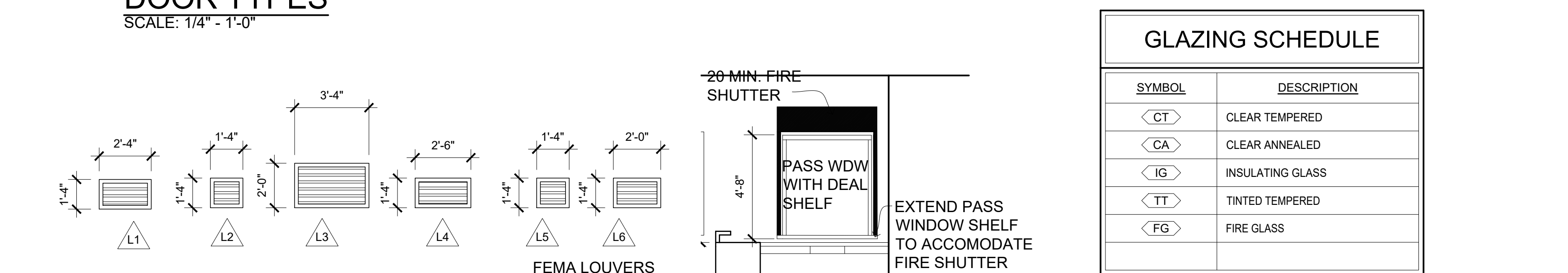


**WINDOW AND STOREFRONT SCHEDULE**  
SCALE: 1/4" = 1'-0"



**DOOR TYPES**  
SCALE: 1/4" = 1'-0"

**HM FRAME TYPES**  
SCALE: 1/4" = 1'-0"



**LOUVER TYPES**  
SCALE: 1/4" = 1'-0"

**PASS WINDOW**  
SCALE: 1/4" = 1'-0" 20 MINUTE FIRERATED

**ROOM FINISH SCHEDULE**

ROOM #	ROOM NAME	FLOOR	BASE	WALLS				CEILING		WAINS.	HEIGHT	REMARKS
				NORTH	SOUTH	EAST	WEST	TYPE	HEIGHT			
100	ENTRANCE	LVT	RB	CMUP	CMUP	-	-	SEE RCP PLAN	---	---	---	
101	CORRIDOR	LVT	RB	CMUP	CMUP	CMUP	CMUP	SEE RCP PLAN	---	---	---	
102	RECPTION	LVT	RB	GBP	GBP	GBP	GBP	SEE RCP PLAN	---	---	---	
103	BOOKKEEPER	LVT	RB	GBP	GBP	GBP	GBP	SEE RCP PLAN	---	---	---	
104	PRINCIPAL	LVT	RB	CMUP	GBP	GBP	CMUP	SEE RCP PLAN	---	---	---	
105	WORK	LVT	RB	CMUP	GBP	GBP	GBP	SEE RCP PLAN	---	---	---	
106	TOILET	PT	PT	CMUP	GBP	GBP	GBP	SEE RCP PLAN	---	---	---	
107	COUNSELOR	LVT	RB	CMUP	GBP	GBP	GBP	SEE RCP PLAN	---	---	---	
108	CONFERENCE	LVT	RB	GBP	CMUP	CMUP	CMUP	SEE RCP PLAN	---	---	---	
109	NURSE	LVT	RB	CMUP	CMUP	CMUP	CMUP	SEE RCP PLAN	---	---	---	
110	STOR	LVT	RB	CMUP	CMUP	CMUP	CMUP	SEE RCP PLAN	---	---	---	
111	TOILET	LVT	RB	CMUP	CMUP	CMUP	CMUP	SEE RCP PLAN	---	---	---	
112	JANITOR	SC	--	CMUP	CMUP	CMUP	CMUP	SEE RCP PLAN	---	---	---	
113	DATA	SC	--	CMUP	CMUP	CMUP	CMUP	SEE RCP PLAN	---	---	---	
114	MECHANICAL	SC	--	CMUP	CMUP	CMUP	CMUP	SEE RCP PLAN	---	---	---	
115	MEDIA CENTER	LVT	RB	CMUP	CMUP	GBP	CMUP	SEE RCP PLAN	---	---	---	
116	OFFICE	LVT	RB	GBP	CMUP	GBP	GBP	SEE RCP PLAN	---	---	---	
117	STOR	LVT	RB	CMUP	CMUP	CMUP	CMUP	SEE RCP PLAN	---	---	---	
118	WORK	LVT	RB	CMUP	CMUP	CMUP	CMUP	SEE RCP PLAN	---	---	---	
118A	MECHANICAL	SC	--	CMUP	CMUP	CMUP	CMUP	SEE RCP PLAN	---	---	---	
119	OFFICE	LVT	RB	CMUP	CMUP	CMUP	CMUP	SEE RCP PLAN	---	---	---	
120	CORRIDOR	LVT	RB	CMUP	CMUP	CMUP	CMUP	SEE RCP PLAN	---	---	---	
121	ALCOVE	LVT	RB	CMUP	CMUP	CMUP	CMUP	SEE RCP PLAN	---	---	---	
122	GIRLS	PT	PT	PT	PT	PT	PT	SEE RCP PLAN	---	---	---	
123	BOYS	PT	PT	PT	PT	PT	PT	SEE RCP PLAN	---	---	---	
124	MATH	LVT	RB	CMUP	CMUP	CMUP	CMUP	SEE RCP PLAN	---	---	---	
125	MATH	LVT	RB	CMUP	CMUP	CMUP	CMUP	SEE RCP PLAN	---	---	---	
126	MECHANICAL	SC	--	CMUP	CMUP	CMUP	CMUP	SEE RCP PLAN	---	---	---	
127	SPECIAL ED.	LVT	RB	CMUP	CMUP	CMUP	CMUP	SEE RCP PLAN	---	---	---	
128	BUSINESS ED.	LVT	RB	CMUP	CMUP	CMUP	CMUP	SEE RCP PLAN	---	---	---	
129	MECHANICAL	SC	--	CMUP	CMUP	CMUP	CMUP	SEE RCP PLAN	---	---	---	
130	HISTORY	LVT	RB	CMUP	CMUP	CMUP	CMUP	SEE RCP PLAN	---	---	---	
131	ENGLISH	LVT	RB	CMUP	CMUP	CMUP	CMUP	SEE RCP PLAN	---	---	---	
132	MECHANICAL	SC	--	CMUP	CMUP	CMUP	CMUP	SEE RCP PLAN	---	---	---	
133	ENGLISH	LVT	RB	CMUP	CMUP	CMUP	CMUP	SEE RCP PLAN	---	---	---	
134	SCIENCE	LVT	RB	CMUP	CMUP	CMUP	CMUP	SEE RCP PLAN	---	---	---	
135	CORRIDOR	LVT	RB	CMUP	CMUP	CMUP	CMUP	SEE RCP PLAN	---	---	---	
136	CORRIDOR	LVT	RB	CMUP	CMUP	CMUP	CMUP	SEE RCP PLAN	---	---	---	
137	TEACHERS LOUNGE	LVT	RB	CMUP	CMUP	CMUP	CMUP	SEE RCP PLAN	---	---	---	
138	TOILET	PT	PT	PT	PT	PT	PT	SEE RCP PLAN	---	---	---	
139	TOILET	PT	PT	PT	PT	PT	PT	SEE RCP PLAN	---	---	---	
140	ELEC.	SC	--	CMUP	CMUP	CMUP	CMUP	SEE RCP PLAN	---	---	---	
141	CLASSROOM	LVT	RB	CMUP	CMUP	CMUP	CMUP	SEE RCP PLAN	---	---	---	
142	MECHANICAL	SC	--	CMUP	CMUP	CMUP	CMUP	SEE RCP PLAN	---	---	---	
143	MECHANICAL	SC	--	CMUP	CMUP	CMUP	CMUP	SEE RCP PLAN	---	---	---	
144	ACCESS	LVT	RB	CMUP	CMUP	CMUP	CMUP	SEE RCP PLAN	---	---	---	

DOOR SCHEDULE													
DOOR #	WIDTH	HEIGHT	THICKNESS	MATERIALS	DOOR TYPE	DOOR FINISH	FRAME TYPE	FRAME FINISH	LABEL	DETAILS		SIGNAGE	REMARKS
										HEAD	JAMB		
100	PR 3'-4"	8'-0"	-	STOREFRONT	--	FACTORY	SF'D"	FACTORY	--	3/A10.1slm	3/A10.1	--	
101	PR 3'-0"	8'-0"	-	STOREFRONT	--	FACTORY	SF'D"	FACTORY	--	3/A10.1slm	3/A10.1	--	
102	3'-0"	7'-0"	1 3/4"	FLUSH WOOD SOLID CORE	HM2	STAIN	HM2	PAINT	--	7/A10.1slm	7/A10.1	RECEPTION	--
103	3'-0"	7'-0"	1 3/4"	FLUSH WOOD SOLID CORE	C	STAIN	HM1	PAINT	--	8/A10.1slm	8/A10.1	OFFICE	--
104	3'-0"	7'-0"	1 3/4"	FLUSH WOOD SOLID CORE	D	STAIN	HM1	PAINT	--	8/A10.1slm	8/A10.1	PRINCIPAL	--
105	3'-0"	7'-0"	1 3/4"	FLUSH WOOD SOLID CORE	C	STAIN	HM1	PAINT	--	8/A10.1slm	8/A10.1	WORK	--
106	3'-0"	7'-0"	1 3/4"	FLUSH WOOD SOLID CORE	D	STAIN	HM1	PAINT	--	8/A10.1slm	8/A10.1	TOILET	--
107	3'-0"	7'-0"	1 3/4"	FLUSH WOOD SOLID CORE	D	STAIN	HM1	PAINT	--	8/A10.1slm	8/A10.1	COUNCILOR	--
108	3'-0"	7'-0"	1 3/4"	FLUSH WOOD SOLID CORE	D	STAIN	HM1	PAINT	--	8/A10.1slm	8/A10.1	CONFERENCE	--
109	3'-0"	7'-0"	1 3/4"	FLUSH WOOD SOLID CORE	D	STAIN	HM1	PAINT	--	7/A10.1slm	7/A10.1	NURSE	--
110	3'-0"	7'-0"	1 3/4"	FLUSH WOOD SOLID CORE	D	STAIN	HM1	PAINT	--	7/A10.1slm	7/A10.1	--	--
111	3'-0"	7'-0"	1 3/4"	FLUSH WOOD SOLID CORE	D	STAIN	HM1	PAINT	--	7/A10.1slm	7/A10.1	--	--
112	PR3'-0"	9'-0"	1 3/4"	FLUSH WOOD SOLID CORE	D	STAIN	HM1	PAINT	--	7/A10.1slm	7/A10.1	JANITOR	FLUSH BOLT INACTIVE LEAF
113	PR3'-0"	9'-0"	1 3/4"	FLUSH WOOD SOLID CORE	D	STAIN	HM1	PAINT	--	7/A10.1slm	7/A10.1	DATA	FLUSH BOLT INACTIVE LEAF
114	3'-0"	7'-0"	1 3/4"	FLUSH WOOD SOLID CORE	D	STAIN	HM1	PAINT	--	7/A10.1slm	7/A10.1	MECHANICAL	--
115	3'-0"	7'-0"	1 3/4"	FLUSH WOOD SOLID CORE	D	STAIN	HM2	PAINT	20 MINUTE	7/A10.1slm	7/A10.1	MEDIA CENTER	--
116	3'-0"	7'-0"	1 3/4"	FLUSH WOOD SOLID CORE	C	STAIN	HM1	PAINT	--	8/A10.1slm	8/A10.1	LIBRARIAN	--
117	3'-0"	7'-0"	1 3/4"	FLUSH WOOD SOLID CORE	D	STAIN	HM1	PAINT	--	8/A10.1slm	8/A10.1	STORAGE	--
118	3'-0"	7'-0"	1 3/4"	FLUSH WOOD SOLID CORE	C	STAIN	HM1	PAINT	--	8/A10.1slm	8/A10.1	WORK	--
118A	3'-0"	7'-0"	1 3/4"	FLUSH WOOD SOLID CORE	D	STAIN	HM1	PAINT	--	8/A10.1slm	8/A10.1	MECHANICAL	--
119	PR 4'-0"	8'-0"	1 3/4"	FLUSH WOOD SOLID CORE	D	STAIN	HM3	PAINT	90 MINUTE	7/A10.1slm	7/A10.1	DBL EGRESS	--
119A	PR 3'-4"	8'-0"	--	STOREFRONT	--	FACTORY	SF'D"	FACTORY	--	--	--	--	PROVIDE REMOVABLE ASTRICAL
120	PR3'-4"	8'-0"	--	STOREFRONT	--	FACTORY	SF'D"	FACTORY	--	--	--	--	
121	NOT USED												
122	3'-0"	7'-0"	1 3/4"	FLUSH WOOD SOLID CORE	D	STAIN	HM1	PAINT	20	7/A10.1slm	7/A10.1	GIRLS	
123	3'-0"	7'-0"	1 3/4"	FLUSH WOOD SOLID CORE	D	STAIN	HM1	PAINT	20	7/A10.1slm	7/A10.1	BOYS	
124	3'-0"	7'-0"	1 3/4"	FLUSH WOOD SOLID CORE	A	STAIN	HM1	PAINT	20	7/A10.1slm	7/A10.1	MATH	
125	3'-0"	7'-0"	1 3/4"	FLUSH WOOD SOLID CORE	A	STAIN	HM1	PAINT	20 MINUTE	7/A10.1slm	7/A10.1	MATH	
126A	3'-0"	5'-0"	1 3/4"	FLUSH WOOD SOLID CORE	D	STAIN	HM1	PAINT	--	7/A10.1slm	7/A10.1	MECHANICAL	
126B	3'-0"	5'-0"	1 3/4"	FLUSH WOOD SOLID CORE	D	STAIN	HM1	PAINT	--	7/A10.1slm	7/A10.1	MECHANICAL	
127	3'-0"	7'-0"	1 3/4"	FLUSH WOOD SOLID CORE	A	STAIN	HM1	PAINT	20	7/A10.1slm	7/A10.1	SPECIAL ED.	
128	3'-0"	7'-0"	1 3/4"	FLUSH WOOD SOLID CORE	A	STAIN	HM1	PAINT	20	7/A10.1slm	7/A10.1	BUSINESS ED.	
129A	3'-0"	5'-0"	1 3/4"	FLUSH WOOD SOLID CORE	D	STAIN	HM1	PAINT	--	7/A10.1slm	7/A10.1	MECHANICAL	
129B	3'-0"	5'-0"	1 3/4"	FLUSH WOOD SOLID CORE	D	STAIN	HM1	PAINT	--	7/A10.1slm	7/A10.1	MECHANICAL	
130	3'-0"	7'-0"	1 3/4"	FLUSH WOOD SOLID CORE	A	STAIN	HM1	PAINT	--	7/A10.1slm	7/A10.1	HISTORY	
131	3'-0"	7'-0"	1 3/4"	FLUSH WOOD SOLID CORE	A	STAIN	HM1	PAINT	--	7/A10.1slm	7/A10.1	ENGLISH	
132A	3'-0"	5'-0"	1 3/4"	FLUSH WOOD SOLID CORE	D	STAIN	HM1	PAINT	--	7/A10.1slm	7/A10.1	MECHANICAL	
132B	3'-0"	5'-0"	1 3/4"	FLUSH WOOD SOLID CORE	D	STAIN	HM1	PAINT	--	7/A10.1slm	7/A10.1	MECHANICAL	
133	NOT USED												
134	3'-0"	7'-0"	1 3/4"	FLUSH WOOD SOLID CORE	A	STAIN	HM1	PAINT	--	7/A10.1slm	7/A10.1	SCIENCE	
135	PR 4'-0"	7'-0"	1 3/4"	FEMA TORNADO DOORS	D	PAINT	HM1	PAINT	90 MINUTES	15/A10.1slm	15/A10.1		
136A	PR 4'-0"	7'-0"	1 3/4"	FEMA TORNADO DOORS	D	PAINT	HM1	PAINT	90 MINUTES	15/A10.1slm	15/A10.1		
136	PR3'-4"	8'-0"	--	STOREFRONT	--	FACTORY	SF'D"	FACTORY	--	7/A10.1slm	7/A10.1	--	
137	3'-0"	7'-0"	1 3/4"	FLUSH WOOD SOLID CORE	A	STAIN	HM1	PAINT	20 MINUTES	7/A10.1slm	7/A10.1	TEACHERS LOUNGE	
138	3'-0"	7'-0"	1 3/4"	FLUSH WOOD SOLID CORE	D	STAIN	HM1	PAINT	--	7/A10.1slm	7/A10.1	TOILET	
139	3'-0"	7'-0"	1 3/4"	FLUSH WOOD SOLID CORE	D	STAIN	HM1	PAINT	--	7/A10.1slm	7/A10.1	TOILET	
140	3'-0"	7'-0"	1 3/4"	FLUSH WOOD SOLID CORE	D	STAIN	HM1	PAINT	--	7/A10.1slm	7/A10.1	ELECTRICAL	
141	3'-0"	7'-0"	1 3/4"	FLUSH WOOD SOLID CORE	A	STAIN	HM1	PAINT	20 MINUTES	7/A10.1slm	7/A10.1	SCIENCE	
142	3'-0"	5'-0"	1 3/4"	FLUSH WOOD SOLID CORE	D	STAIN	HM1	PAINT	--	7/A10.1slm	7/A10.1	MECHANICAL	
143	3'-0"	5'-0"	1 3/4"	FLUSH WOOD SOLID CORE	D	STAIN	HM1	PAINT	--	7/A10.1sl			