

300 CHASE PARK SOUTH • SUITE 200 • HOOVER, ALABAMA 35244
205-988-9112

ADDENDUM NO. 2
ADDITIONS AND ALTERATIONS TO HOMER SMILES STADIUM
Architect Job No. 23-125
September 12, 2024
DCM # 20240208

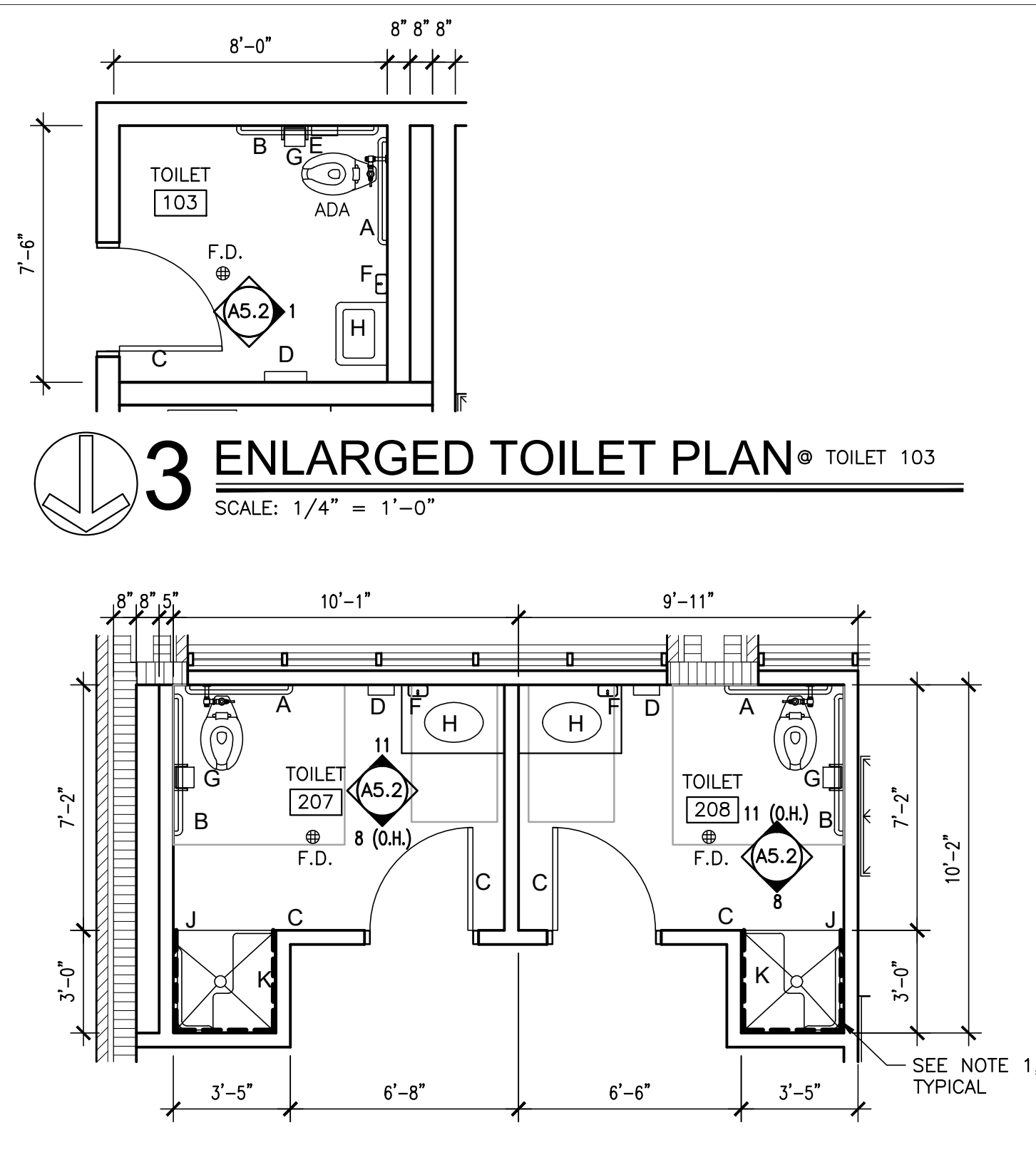
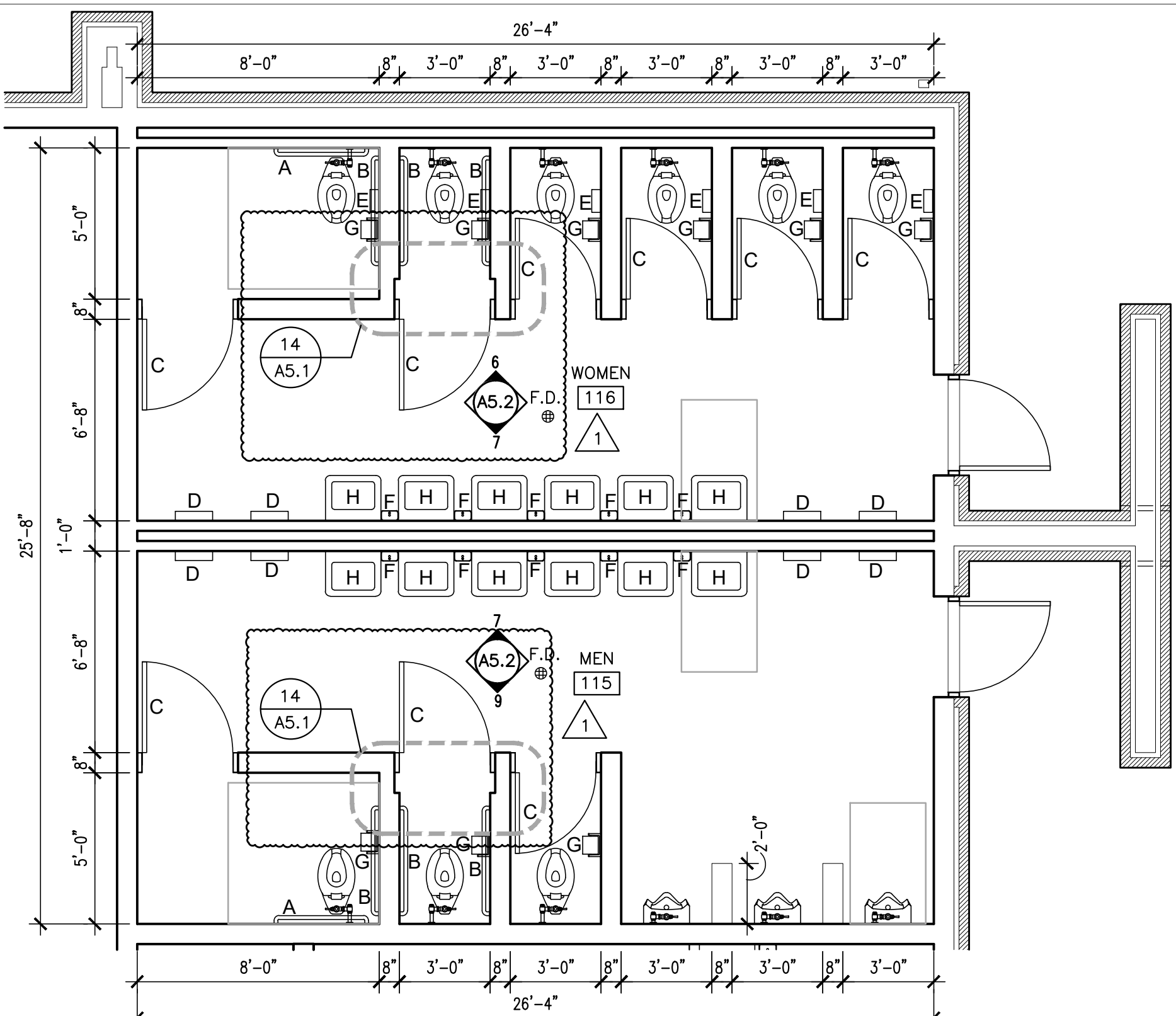
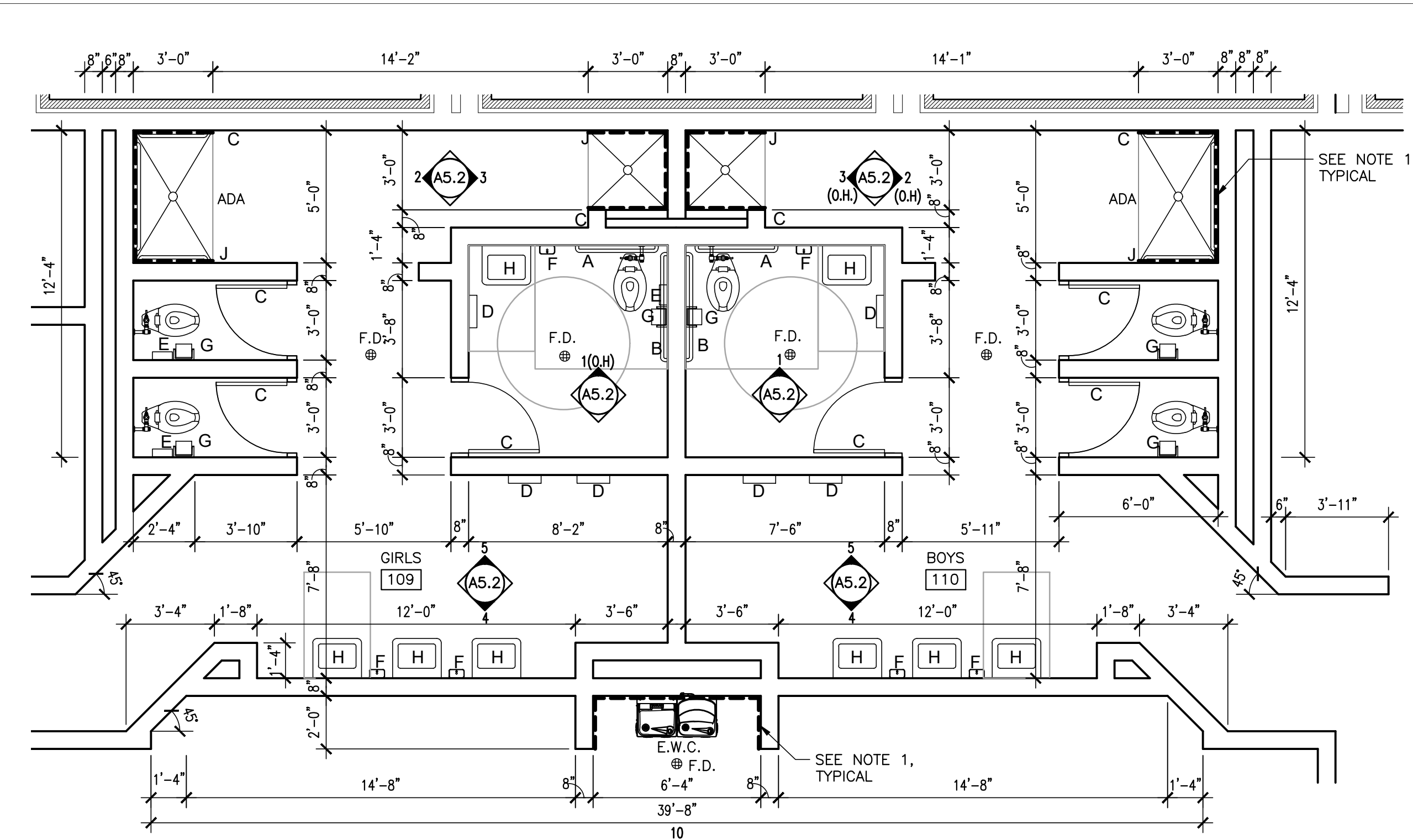
BIDS DUE:

**Tuesday, September 24, 2024, until
2:00 p.m., local time, held at
Leeds City Board of Education
1517 Hurst Ave. NE
Leeds, AL 35094**

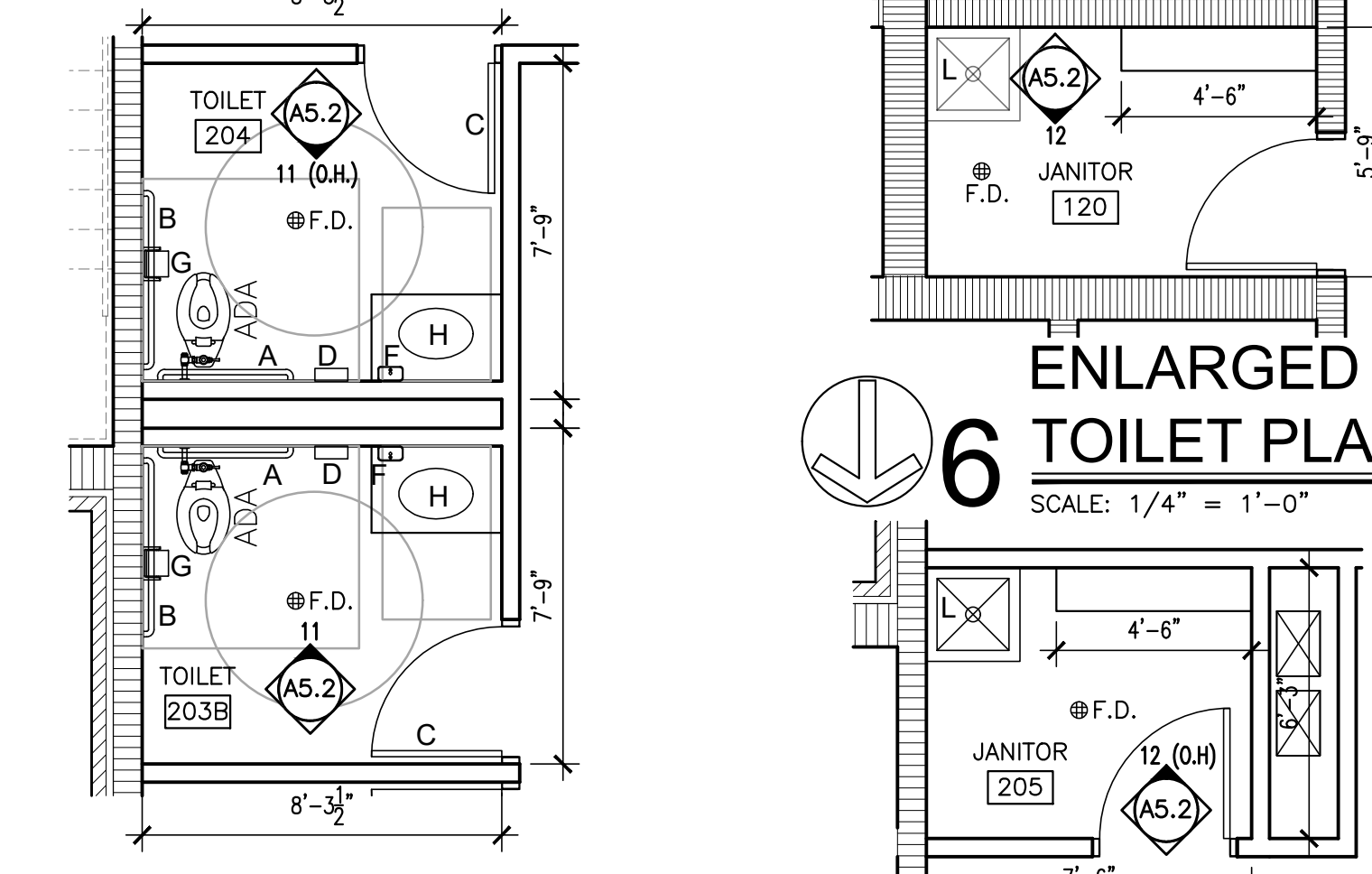
The Plans and Specifications are here by amended. The following supersedes all contrary and/or conflicting information and is made part of the contract documents.

DRAWINGS

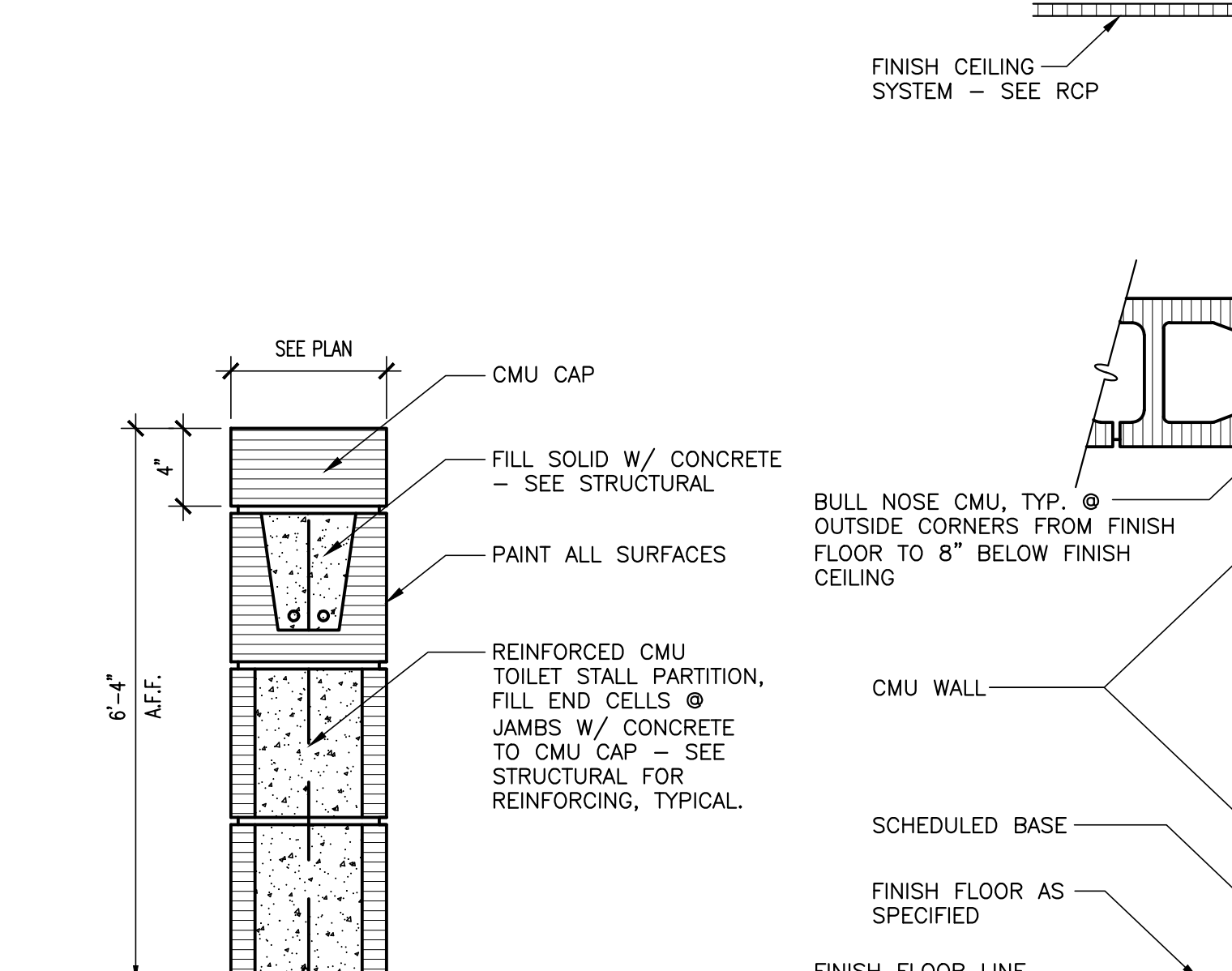
1. See attached Sheet A5.1 – Enlarged Toilet Plans and Details, revised 9/10/2024.
2. See attached Sheet A5.2 – Interior Elevations and Details, revised 9/10/2024.
3. See attached Sheet A7.1 – Reflected Ceiling Plan – Lower and Upper Level, Legends and Details, revised 9/10/2024.
4. See attached Sheet A8.1 – Finish Floor Plan – Lower and Upper Level, revised 9/10/2024.



1 ENLARGED TOILET PLAN @ GIRLS 109 AND BOYS 110
 SCALE: 1/4" = 1'-0"

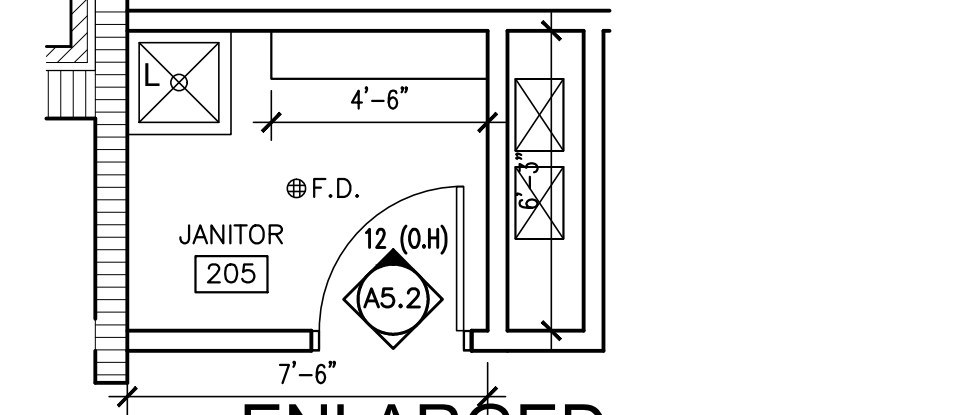


5 ENLARGED TOILET PLAN @ TOILET 203B AND TOILET 204
 SCALE: 1/4" = 1'-0"

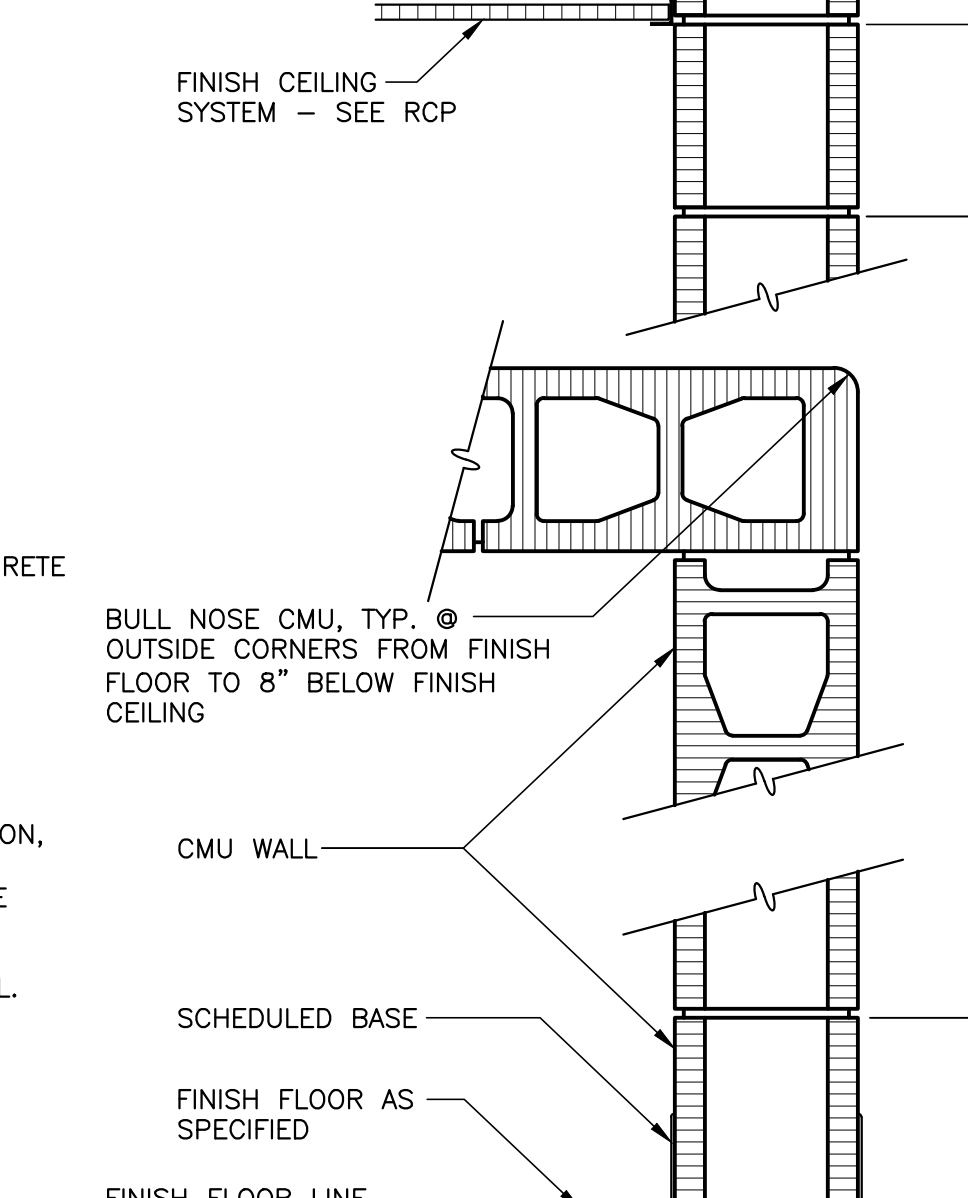


9 DETAIL @ CMU WALL PARTITION CAP
 SCALE: 1-1/2" = 1'-0"

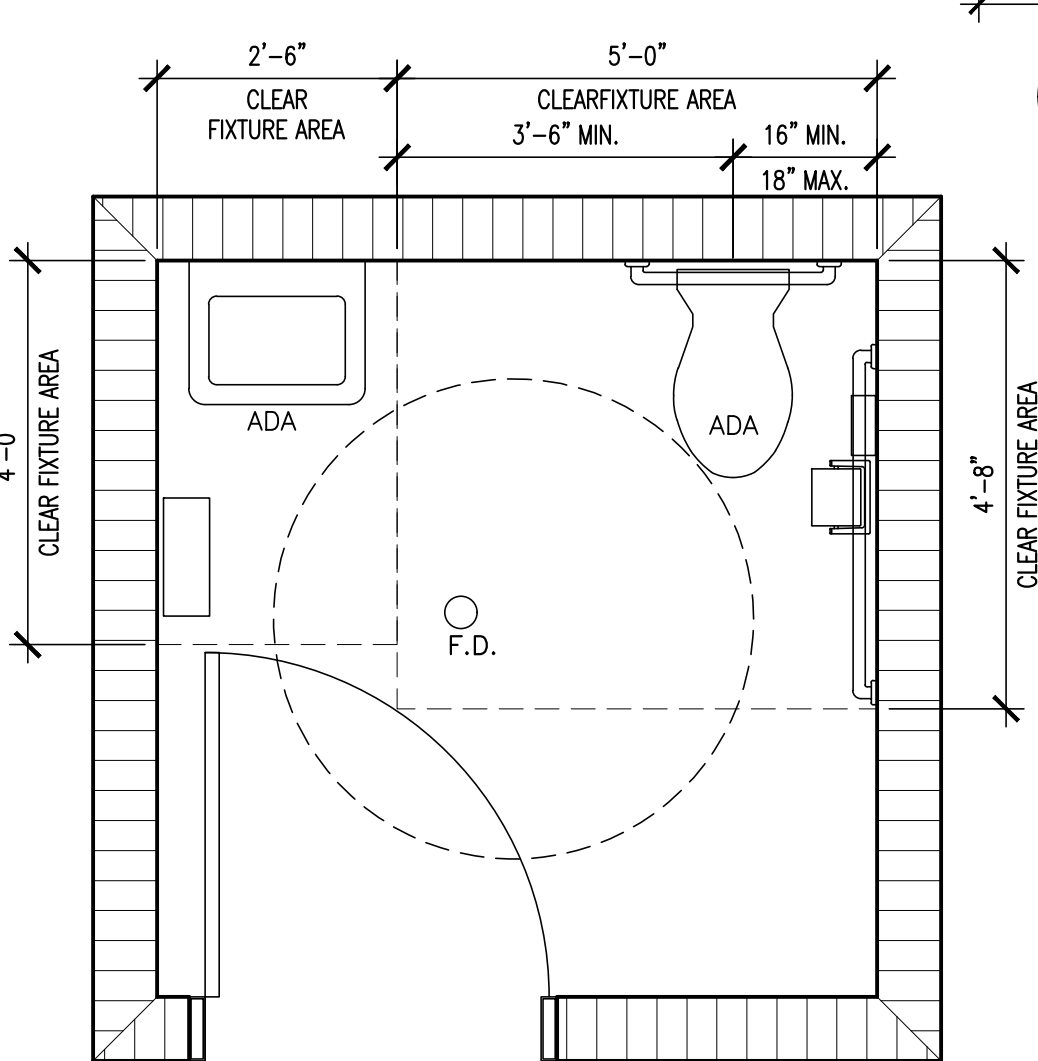
6 ENLARGED TOILET PLAN @ JANITOR 120
 SCALE: 1/4" = 1'-0"



7 ENLARGED TOILET PLAN @ JANITOR 205
 SCALE: 1/4" = 1'-0"

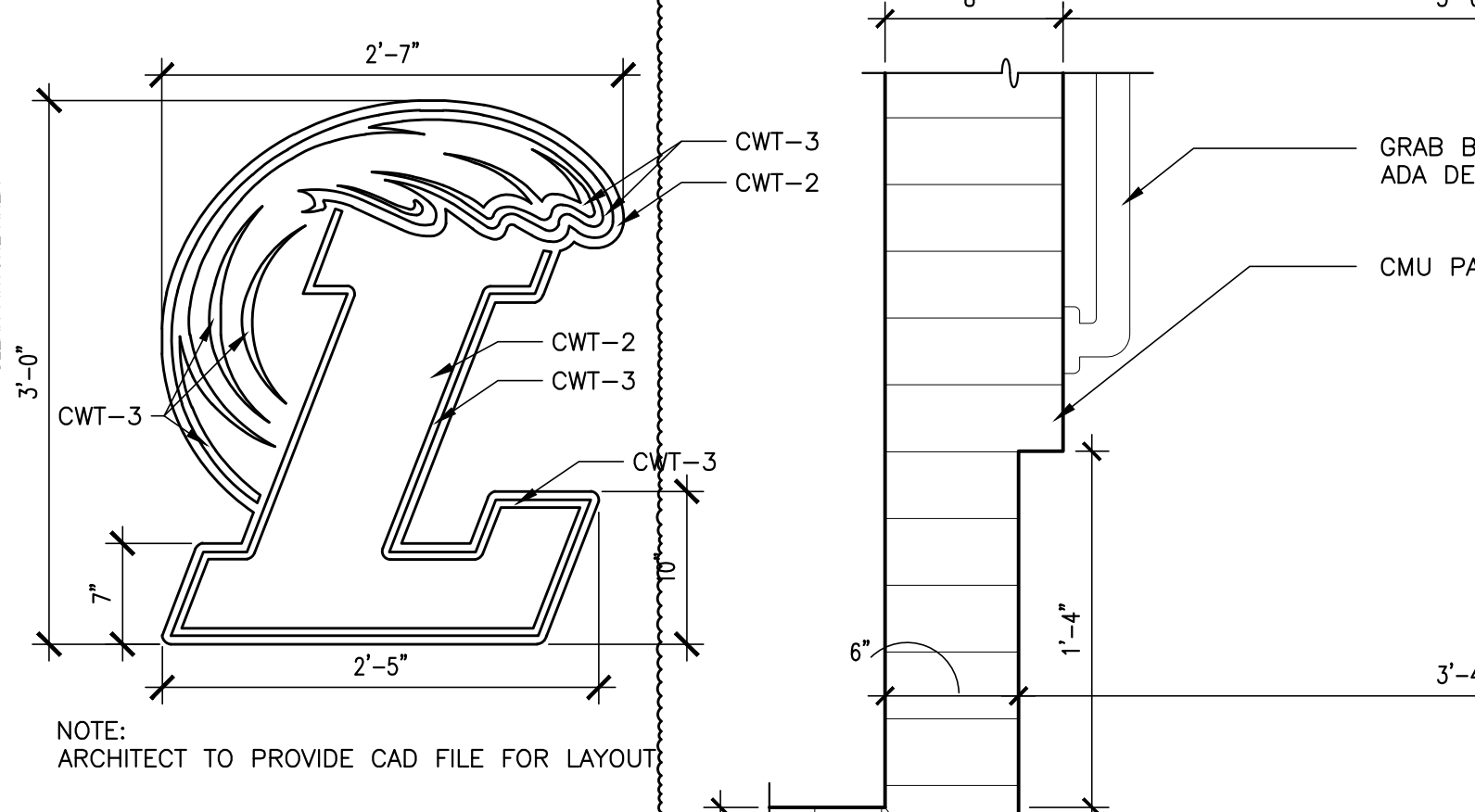


10 DETAIL @ CMU DOUBLE BULLNOSED EDGE
 SCALE: 1-1/2" = 1'-0"

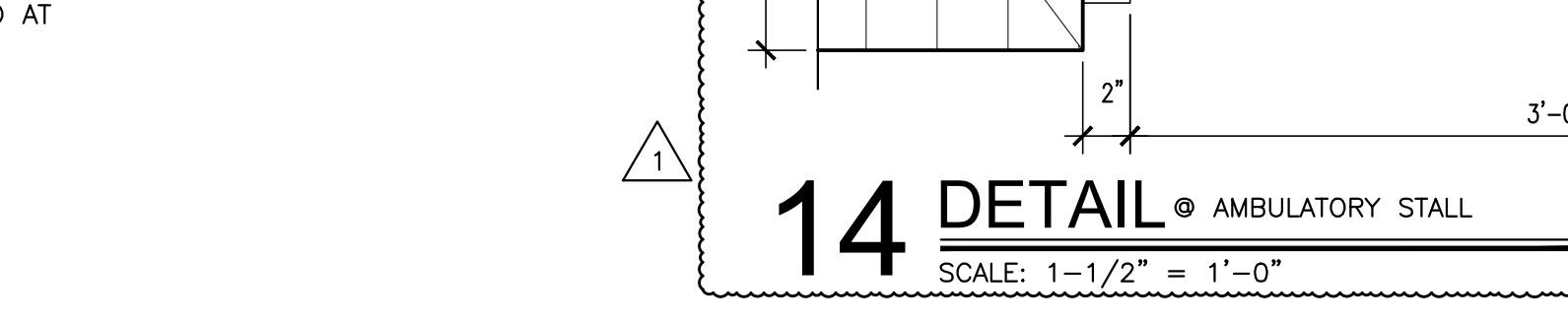


TYPICAL ADA DETAIL
 SCALE: 1/2" = 1'-0"

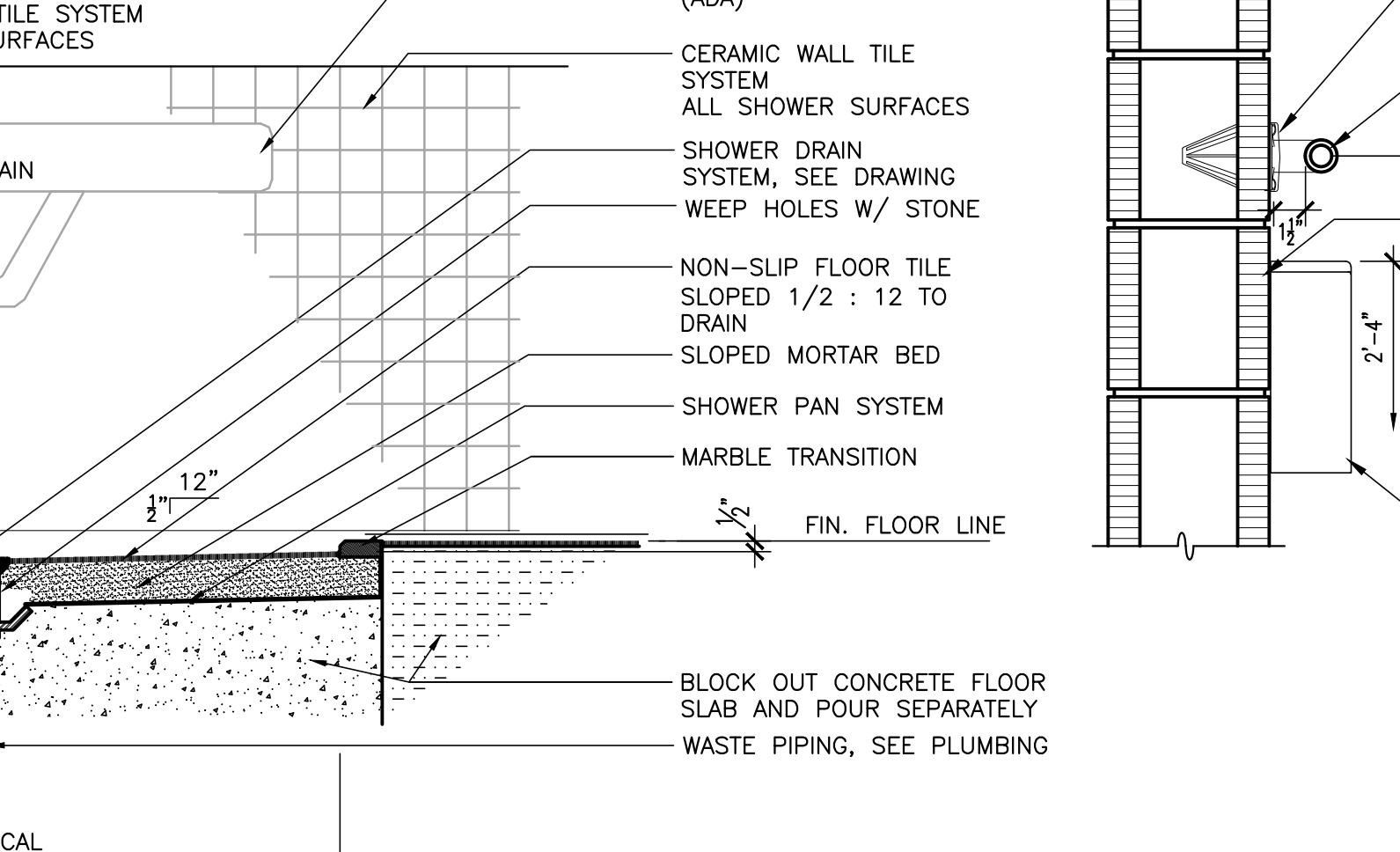
2 ENLARGED TOILET PLAN @ MEN 115 AND WOMEN 116
 SCALE: 1/4" = 1'-0"



8 DETAIL @ WATERJET LOGO @ WATERCOOLERS
 SCALE: 1" = 1'-0"

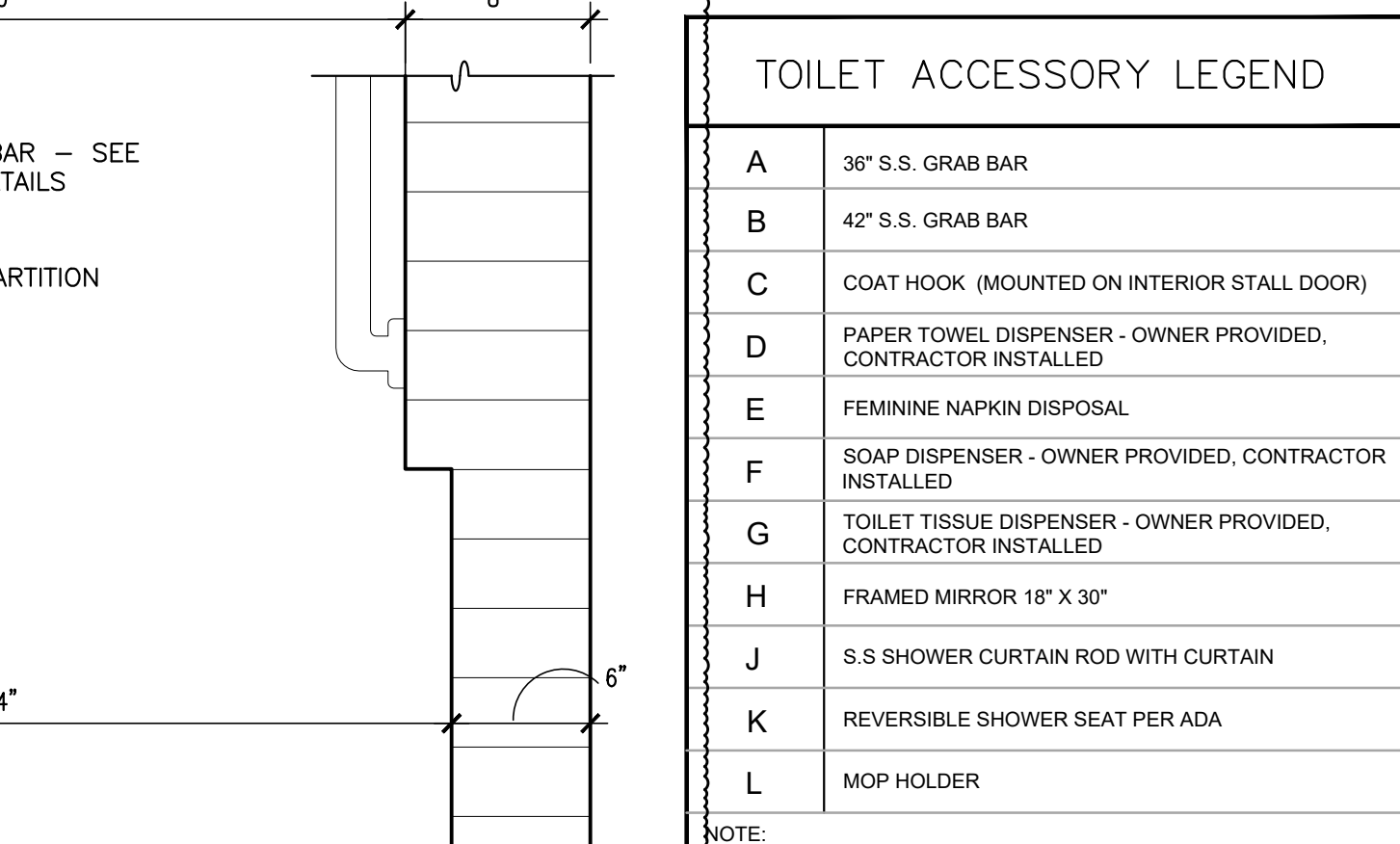


14 DETAIL @ AMBULATORY STALL
 SCALE: 1-1/2" = 1'-0"

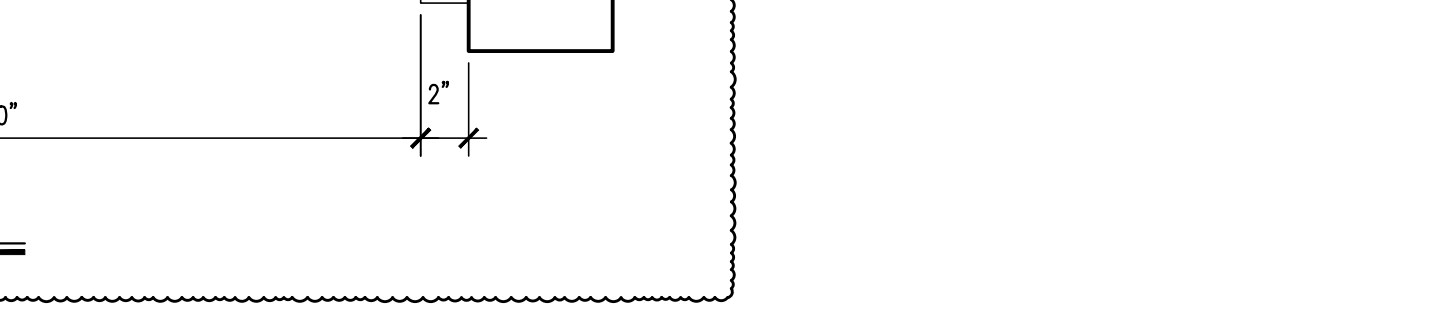


11 DETAIL @ SHOWER PAN
 SCALE: 1-1/2" = 1'-0"

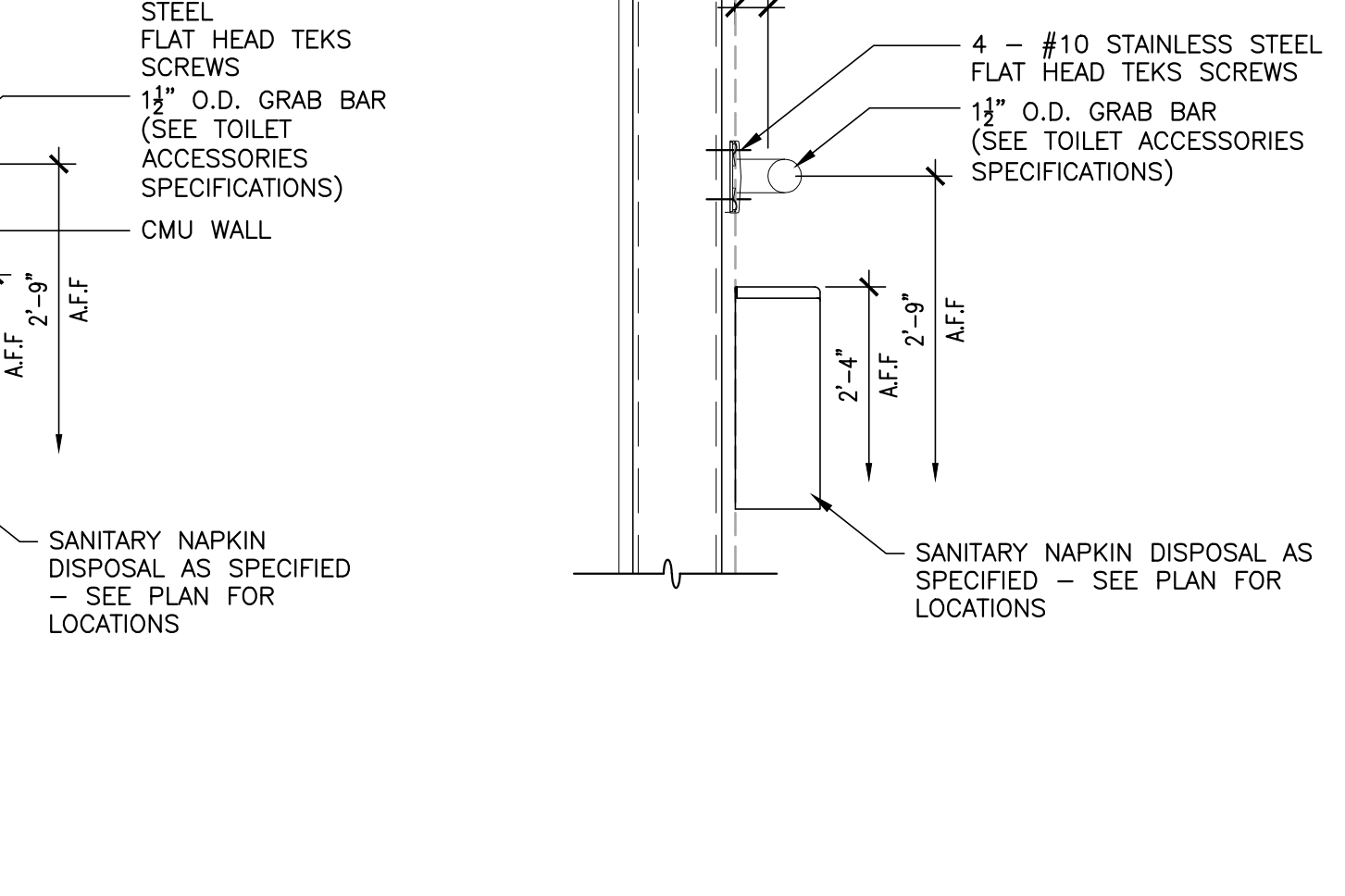
4 ENLARGED TOILET PLAN @ TOILET 207 AND TOILET 208
 SCALE: 1/4" = 1'-0"



12 DETAIL @ GRAB BAR AT CMU
 SCALE: 1-1/2" = 1'-0"



13 DETAIL @ GRAB BAR AT METAL STUD
 SCALE: 1-1/2" = 1'-0"



13 DETAIL @ GRAB BAR AT METAL STUD
 SCALE: 1-1/2" = 1'-0"

TOILET ACCESSORY LEGEND	
A	36" S.S. GRAB BAR
B	42" S.S. GRAB BAR
C	COAT HOOK (MOUNTED ON INTERIOR STALL DOOR)
D	PAPER TOWEL DISPENSER - OWNER PROVIDED, CONTRACTOR INSTALLED
E	FEMININE NAPKIN DISPOSAL
F	SOAP DISPENSER - OWNER PROVIDED, CONTRACTOR INSTALLED
G	TOILET TISSUE DISPENSER - OWNER PROVIDED, CONTRACTOR INSTALLED
H	FRAMED MIRROR 18" X 30"
J	S.S. SHOWER CURTAIN ROD WITH CURTAIN
K	REVERSIBLE SHOWER SEAT PER ADA
L	MOP HOLDER

NOTE:
 * DASHED LINE INDICATES CERAMIC WALL TILE. CWT, REFER TO INTERIOR ELEVATIONS FOR HEIGHTS AND FINISH SCHEDULE FOR COLORS.

1. DOOR AND 60" TURNAROUND RADIUS MAY OVERLAP.
2. DOOR AND CLEAR FIXTURE AREAS MAY NOT OVERLAP.
3. FIXTURE AREA FOR DIFFERENT FIXTURES MAY NOT OVERLAP.
4. IN A GROUP TOILET WITH CMU PARTITION THE ADA TOILET MUST BE 5'-6" X 5'-6" MIN. OR THEIR MUST BE A 9" TOE SPACE PROVIDED AT THE PARTITIONS.

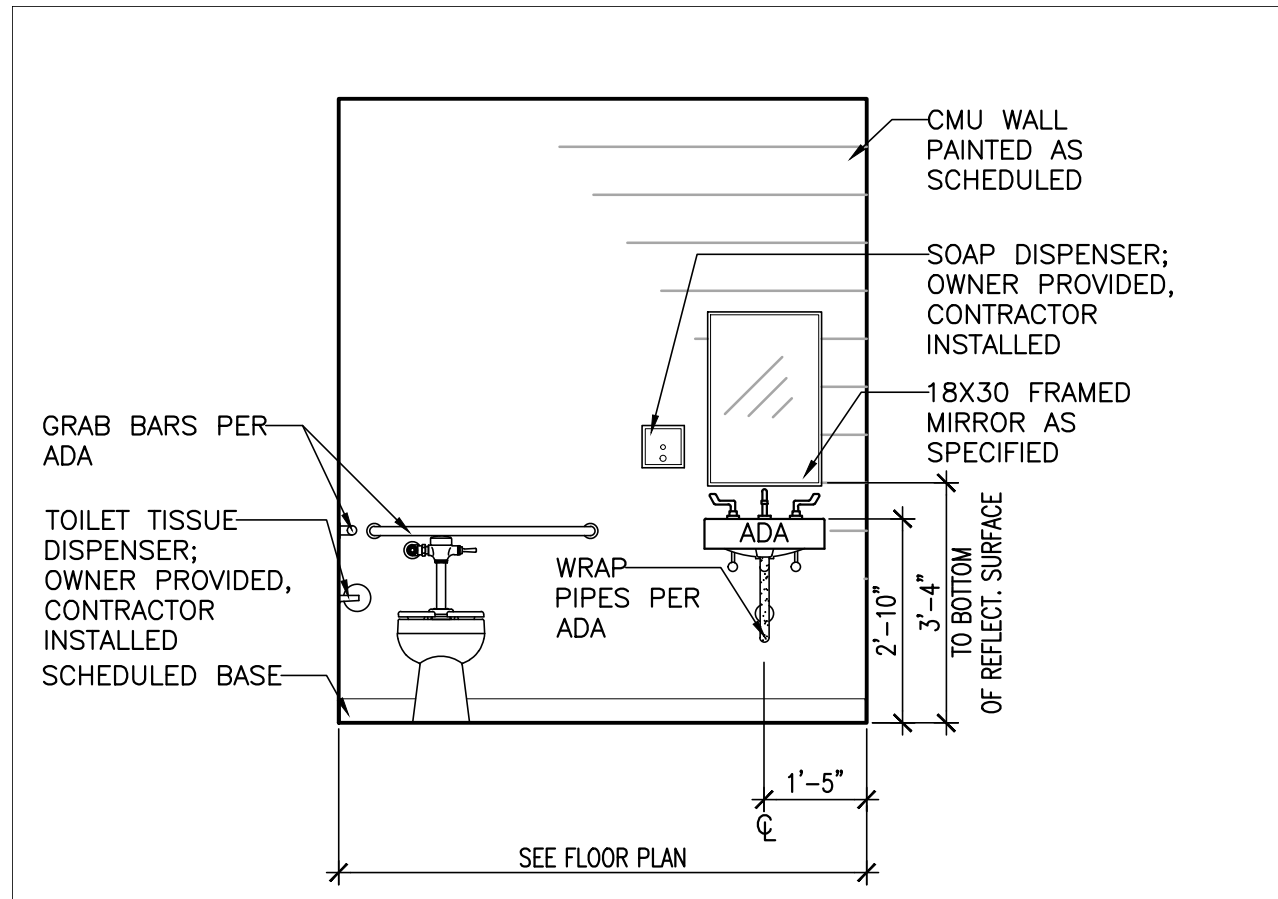
NOTE: ARCHITECT TO PROVIDE CAD FILE FOR LAYOUT

- CMU CAP
- FILL SOLID W/ CONCRETE - SEE STRUCTURAL
- PAINT ALL SURFACES
- REINFORCED CMU TOILET STALL PARTITION, FILL END CELLS @ JAMBS W/ CONCRETE TO CMU CAP - SEE STRUCTURAL FOR REINFORCING, TYPICAL.
- BULL NOSE CMU, TYP. @ OUTSIDE CORNERS FROM FINISH FLOOR TO 8" BELOW FINISH CEILING
- CMU WALL
- SCHEDULED BASE
- FINISH FLOOR AS SPECIFIED
- FINISH FLOOR LINE

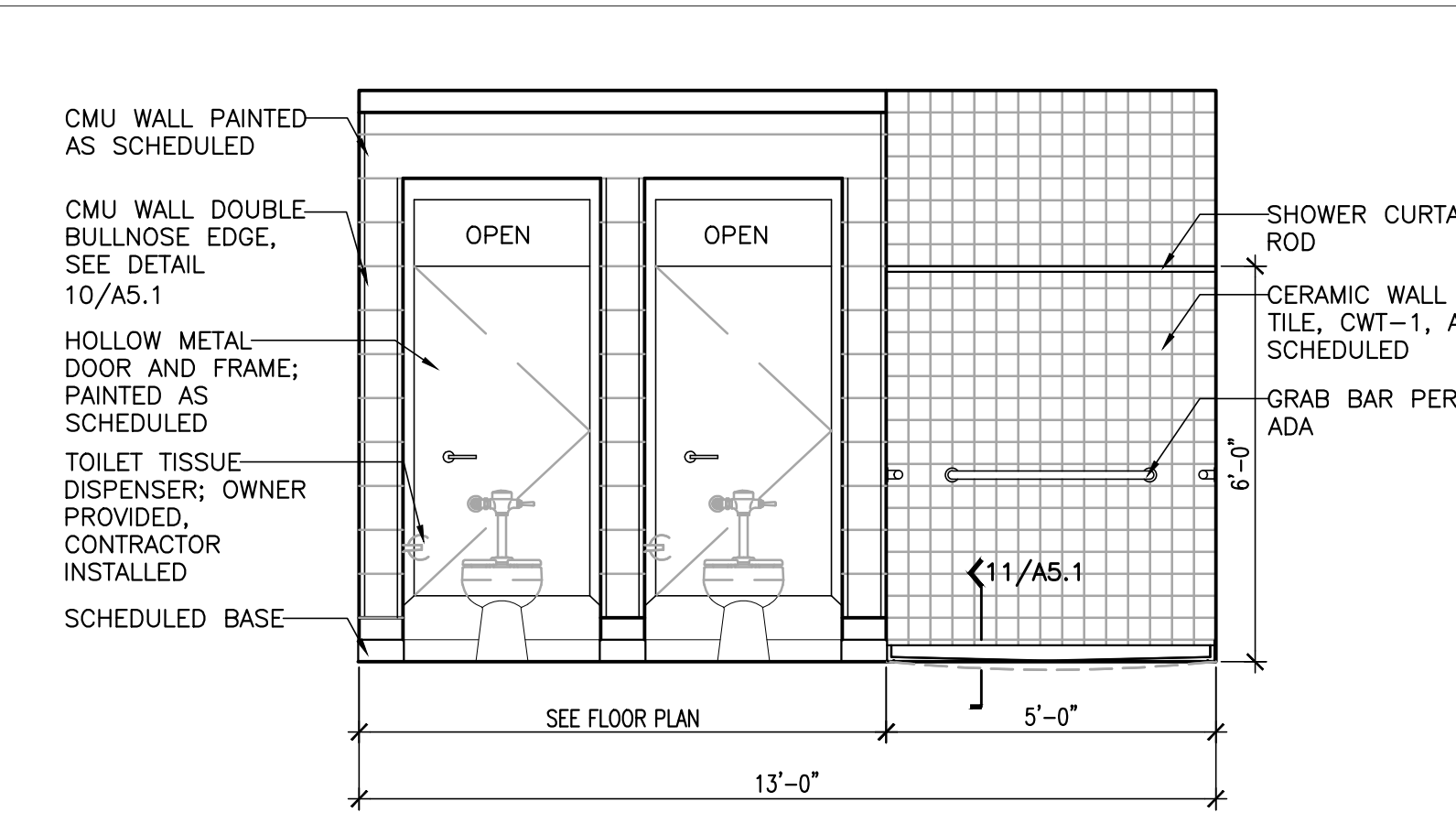
- CERAMIC WALL TILE SYSTEM ALL SHOWER SURFACES
- SHOWER DRAIN SYSTEM, SEE DRAWING
- NON-SLIP FLOOR TILE SLOPED 1/2" : 12 TO DRAIN
- SHOWER PAN SYSTEM
- MARBLE TRANSITION
- FIN. FLOOR LINE
- BLOCK OUT CONCRETE FLOOR SLAB AND POUR SEPARATELY
- WASTE PIPING, SEE PLUMBING

- FOLDING SHOWER SEAT (ADA)
- CERAMIC WALL TILE SYSTEM ALL SHOWER SURFACES
- SHOWER DRAIN SYSTEM, SEE DRAWING
- NON-SLIP FLOOR TILE SLOPED 1/2" : 12 TO DRAIN
- SHOWER PAN SYSTEM
- MARBLE TRANSITION
- FIN. FLOOR LINE
- BLOCK OUT CONCRETE FLOOR SLAB AND POUR SEPARATELY
- WASTE PIPING, SEE PLUMBING
- 4 - #10 STAINLESS STEEL FLAT HEAD TEK'S SCREWS
- 1 1/2" O.D. GRAB BAR (SEE TOILET ACCESSORIES SPECIFICATIONS)
- CMU WALL
- SANITARY NAPKIN DISPOSAL AS SPECIFIED - SEE PLAN FOR LOCATIONS

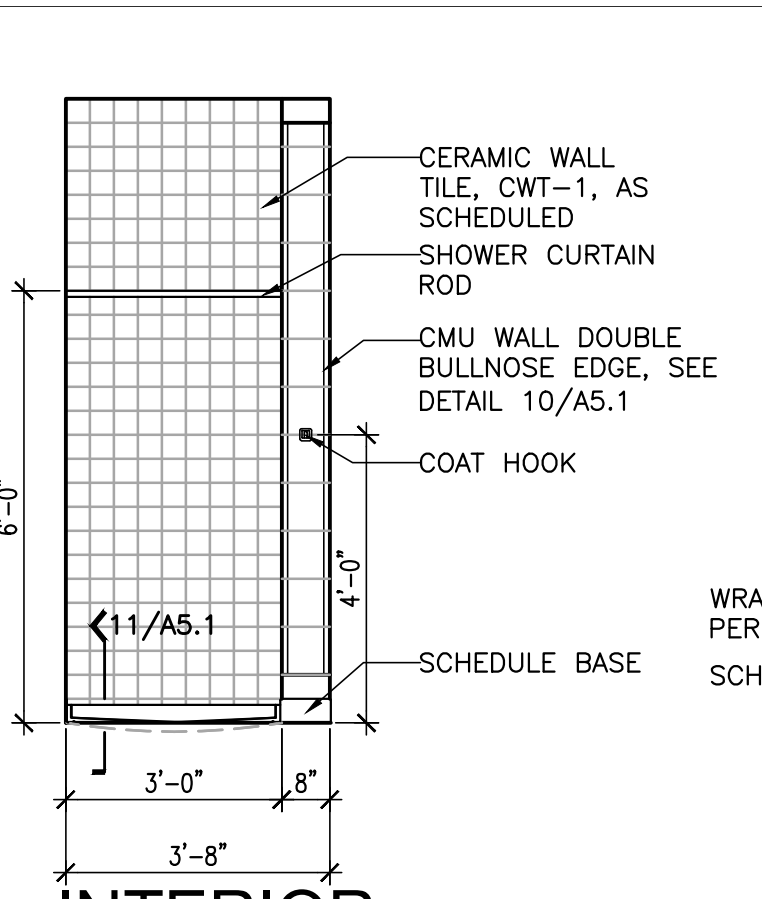
- METAL STUD WALL
- 4 - #10 STAINLESS STEEL FLAT HEAD TEK'S SCREWS
- 1 1/2" O.D. GRAB BAR (SEE TOILET ACCESSORIES SPECIFICATIONS)
- SANITARY NAPKIN DISPOSAL AS SPECIFIED - SEE PLAN FOR LOCATIONS



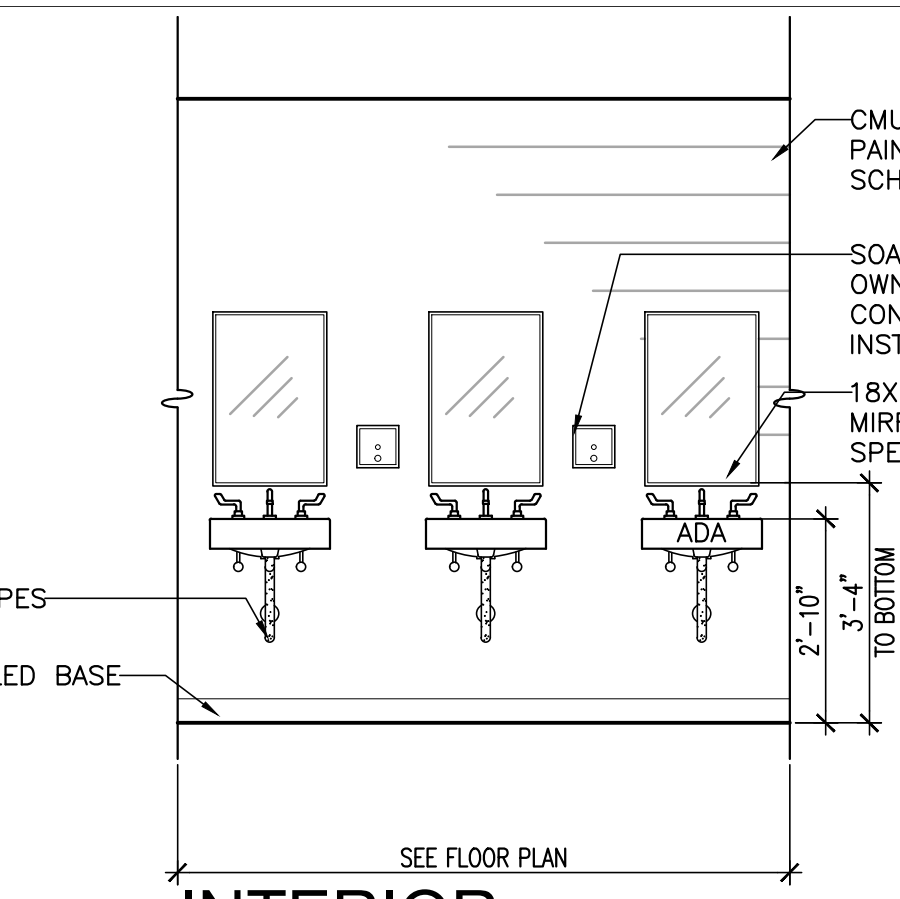
1 INTERIOR ELEVATION @ TYPICAL ADA SINGLE TOILET
 SCALE: 3/8" = 1'-0"



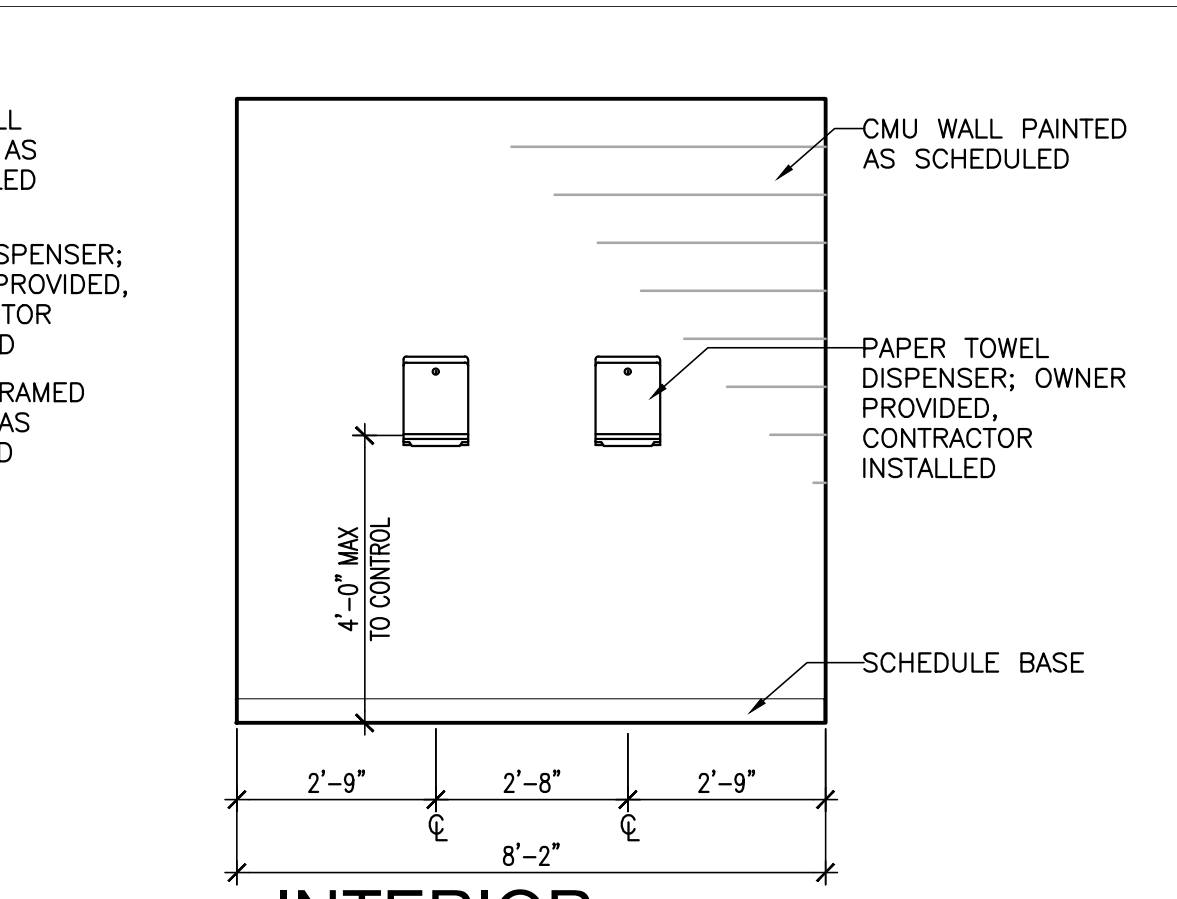
2 INTERIOR ELEVATION @ GIRLS 109 AND BOYS 110 (O.H.)
 SCALE: 3/8" = 1'-0"



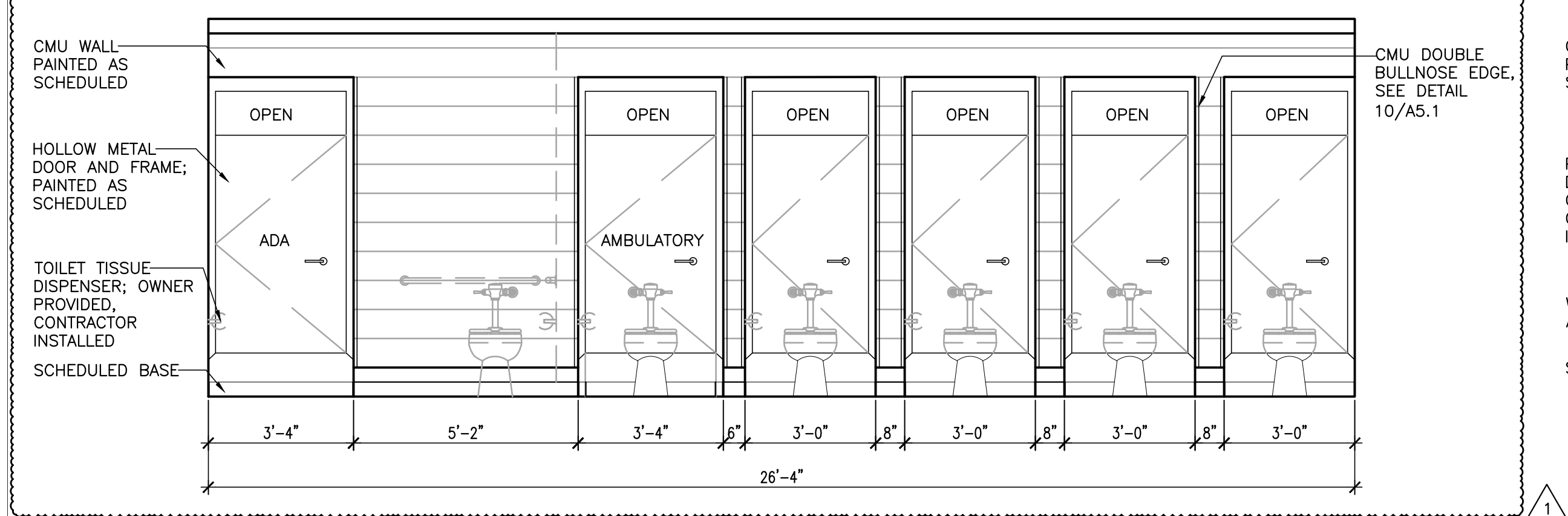
3 INTERIOR ELEVATION @ GIRLS 109 AND BOYS 110 (O.H.)
 SCALE: 3/8" = 1'-0"



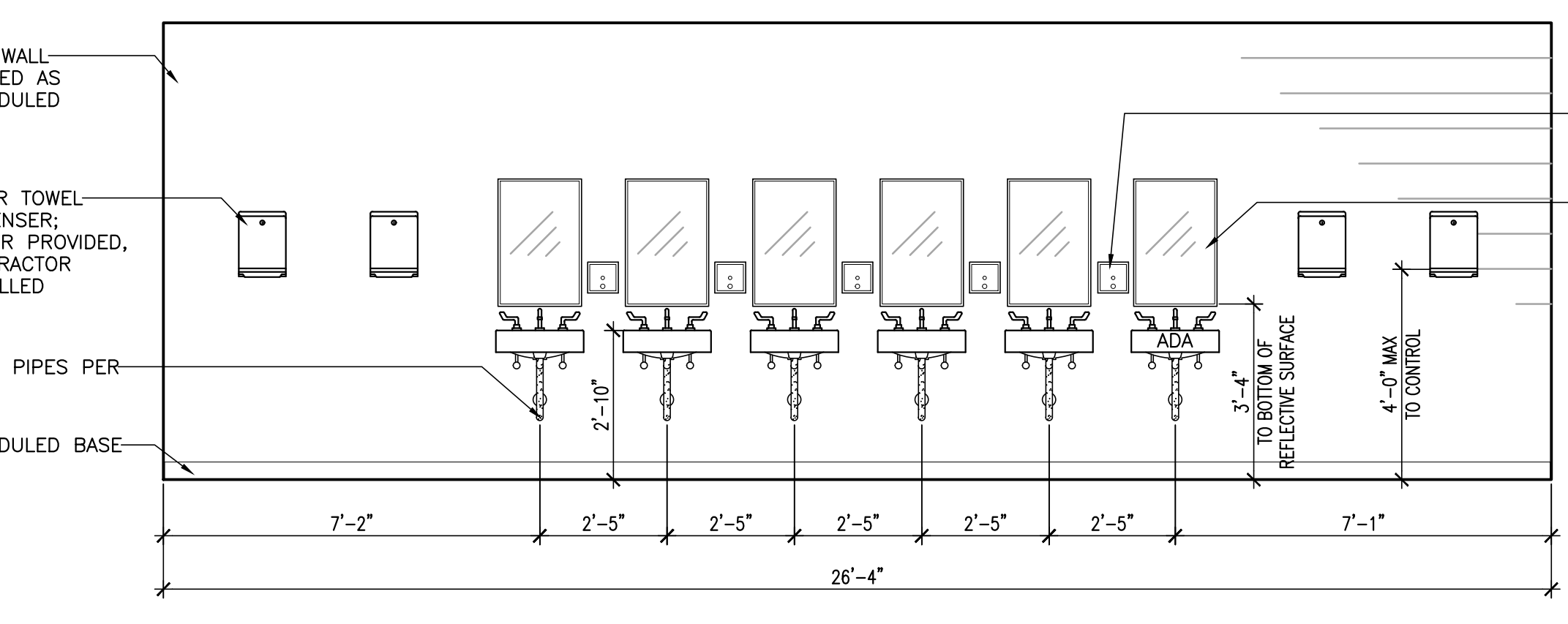
4 INTERIOR ELEVATION @ GIRLS 109 AND BOYS 110
 SCALE: 3/8" = 1'-0"



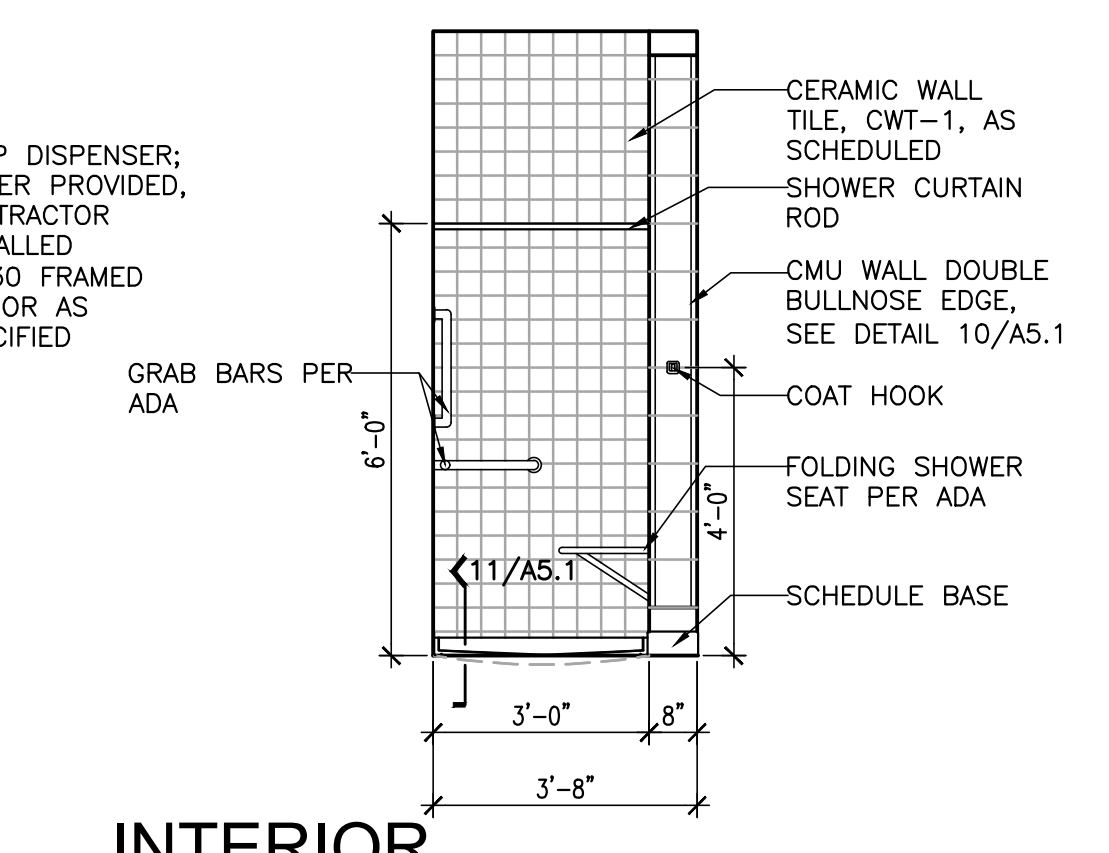
5 INTERIOR ELEVATION @ GIRLS 109 AND BOYS 110
 SCALE: 3/8" = 1'-0"



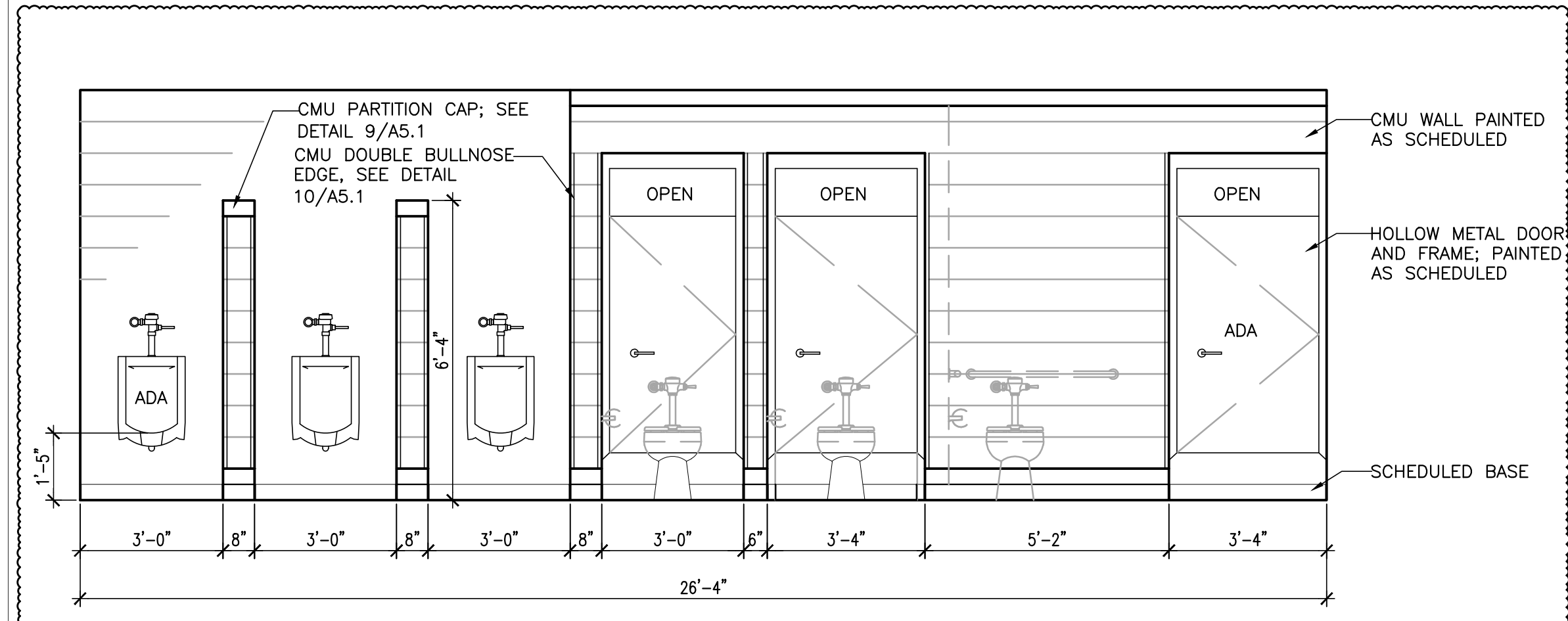
6 INTERIOR ELEVATION @ WOMEN 116
 SCALE: 3/8" = 1'-0"



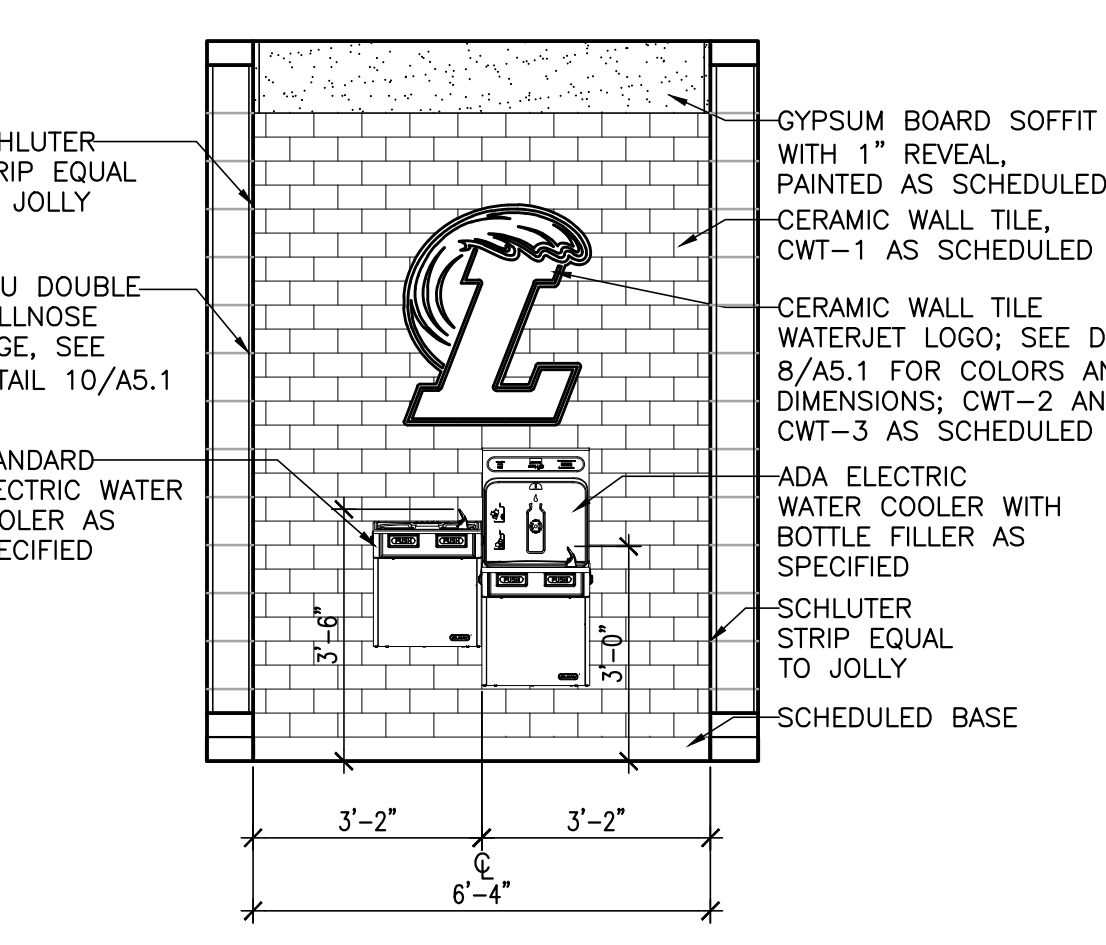
7 INTERIOR ELEVATION @ MEN 115 AND WOMEN 116
 SCALE: 3/8" = 1'-0"



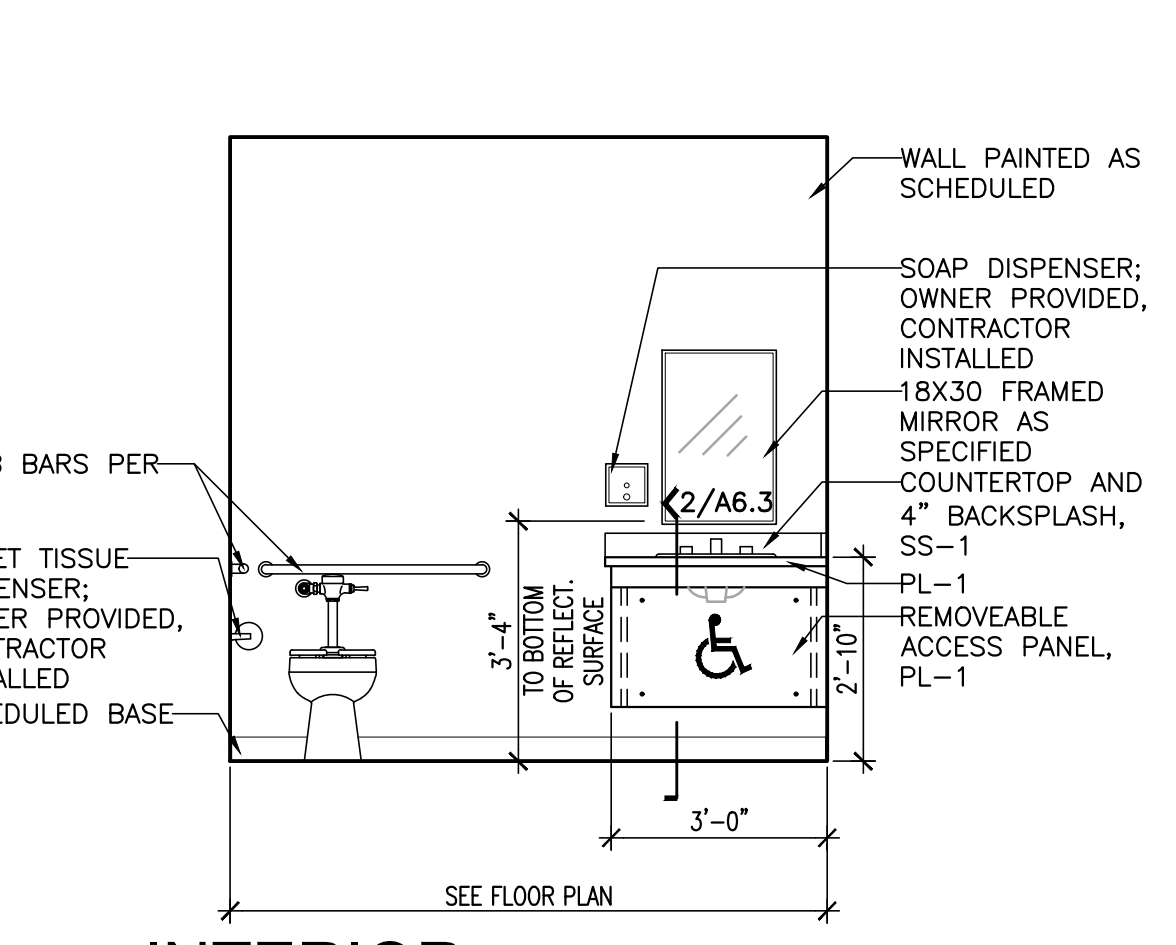
8 INTERIOR ELEVATION @ TOILET 207, AND TOILET 208 (O.H.)
 SCALE: 3/8" = 1'-0"



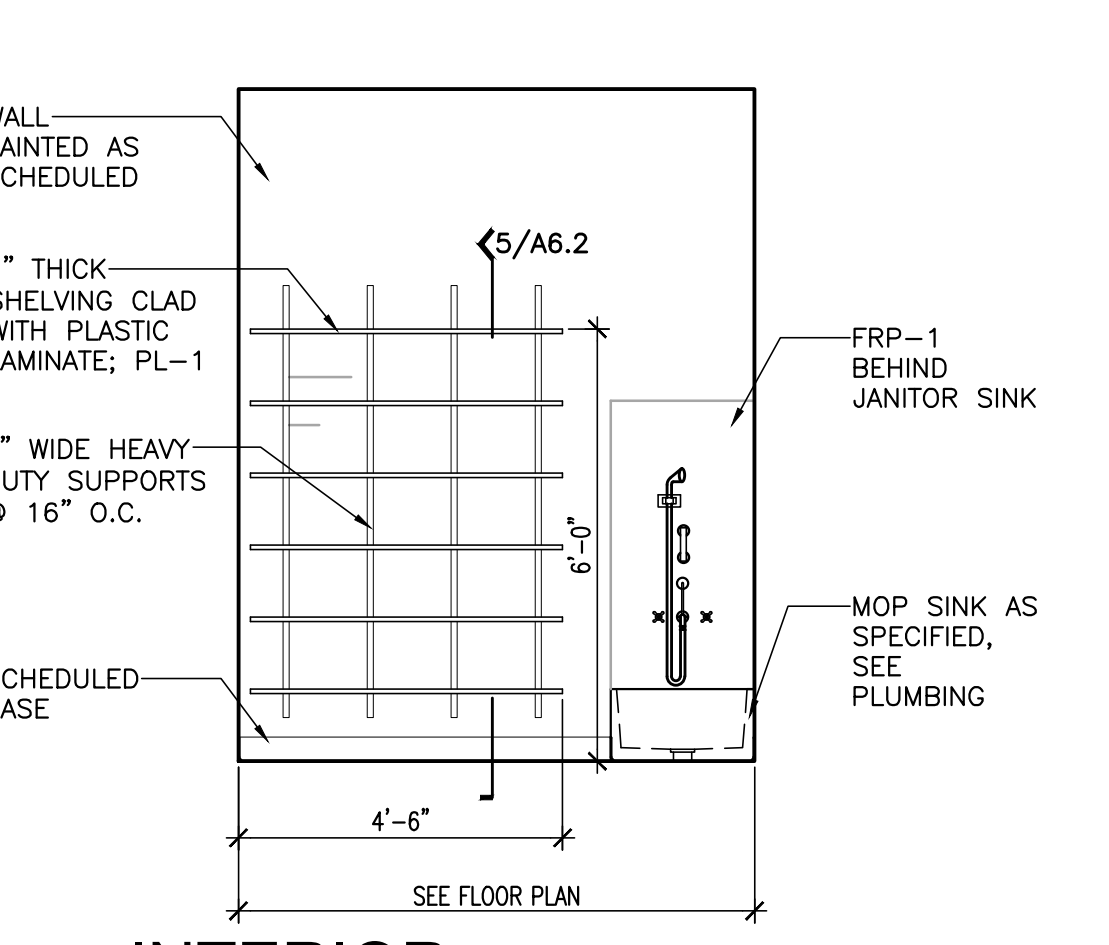
9 INTERIOR ELEVATION @ MEN 115
 SCALE: 3/8" = 1'-0"



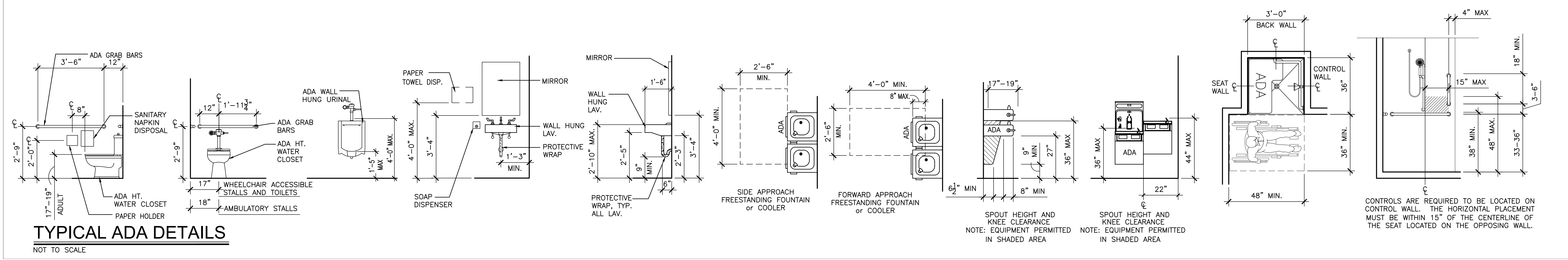
10 INTERIOR ELEVATION @ CORRIDOR 100
 SCALE: 3/8" = 1'-0"



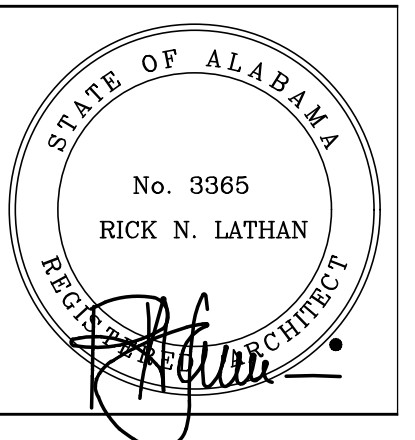
11 INTERIOR ELEVATION @ TOILET 203B, TOILET 204 (O.H.), TOILET 207, AND TOILET 208 (O.H.)
 SCALE: 3/8" = 1'-0"



12 INTERIOR ELEVATION @ JANITOR 120 AND JANITOR 205
 SCALE: 3/8" = 1'-0"



CONTROLS ARE REQUIRED TO BE LOCATED ON CONTROL WALL. THE HORIZONTAL PLACEMENT MUST BE WITHIN 15" OF THE CENTERLINE OF THE SEAT LOCATED ON THE OPPOSING WALL.

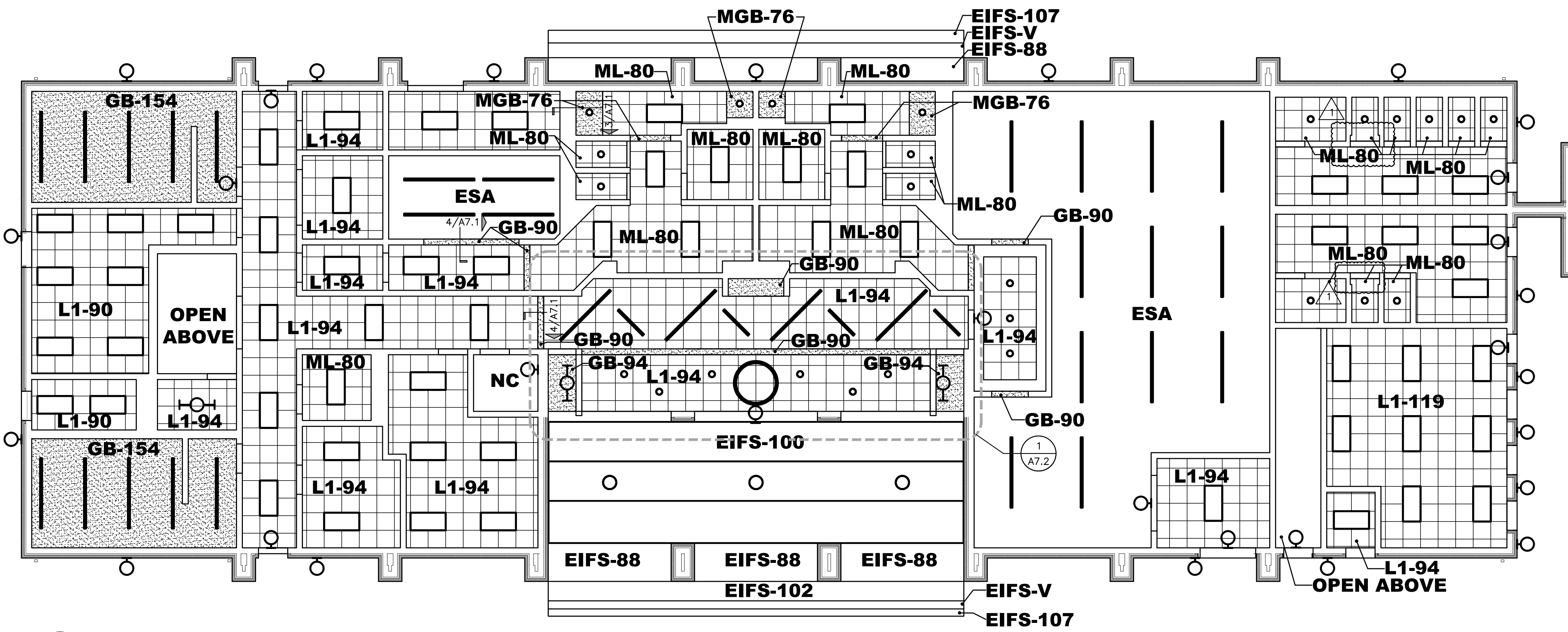


SHEET TITLE:
REFLECTED CEILING PLAN -
LOWER AND UPPER LEVEL,
LEGENDS AND DETAILS

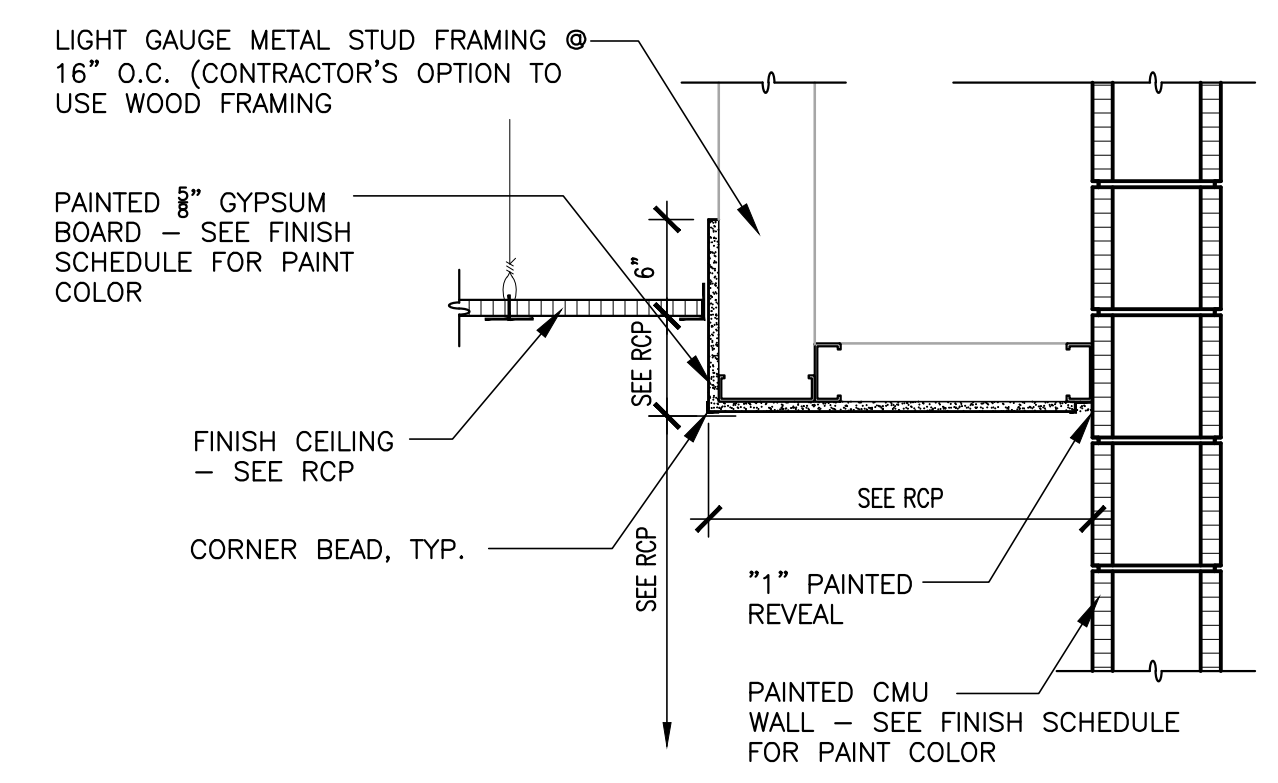
PROJ. MGR.: MSC
DRAWN: K. JOINER
DATE: JUNE 28, 2024
REVISIONS
1 09.10.24 ADD#2

CEILING LEGEND	
CEILING TYPE	CEILING HEIGHTS
L1-2 LAY-IN ACOUSTICAL CEILING TILE, AS SPECIFIED	76 = 7'-6" AFF
ML-2 x 2 MOISTURE RESISTANT LAY-IN, AS SPECIFIED	80 = 8'-0" AFF
GB-GYPSUM BOARD, PAINTED AS SCHEDULED	88 = 8'-8" AFF
MGB - MOISTURE RESISTANT GYPSUM BOARD	90 = 9'-0" AFF
NC - NO CEILING	94 = 9'-4" AFF
ESA - EXPOSED STRUCTURE ABOVE, PAINTED	100 = 10'-0" AFF
EIFS - EXTERIOR INSULATED FINISH SYSTEM	102 = 10'-2" AFF
	107 = 10'-7" AFF
	110 = 11'-0" AFF
	119 = 11'-9" AFF
	154 = 15'-4" AFF

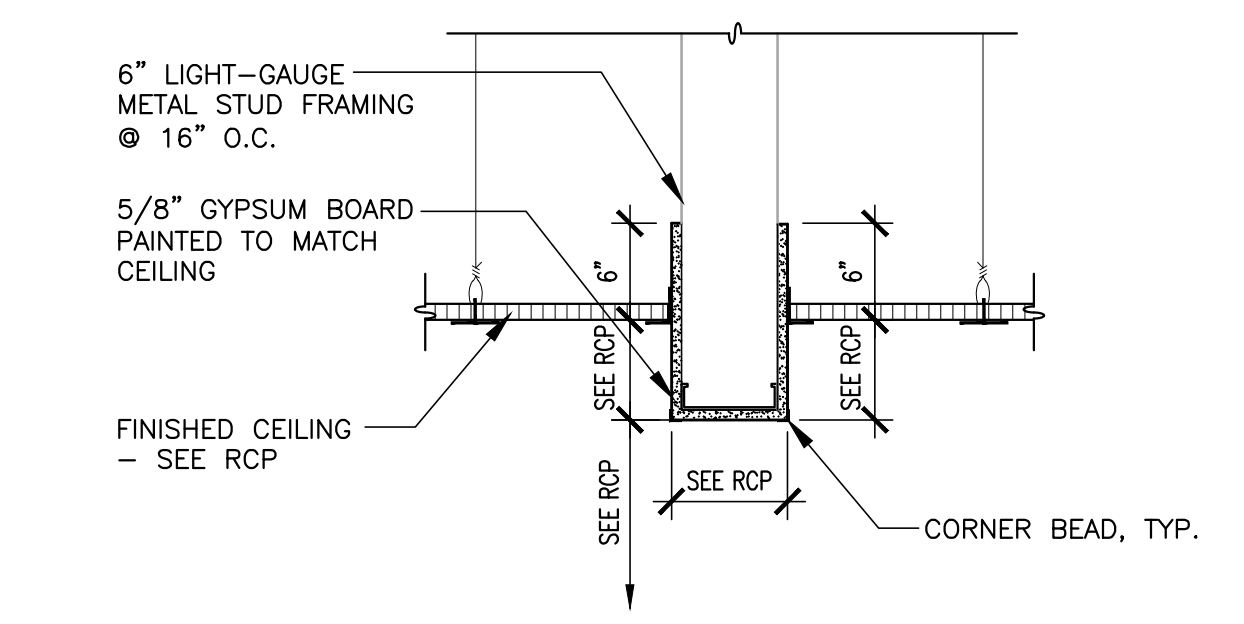
- CEILING NOTES**
- ALL RATED GYPSUM BOARD CEILINGS TO BE TYPE "X" FIRE RATED GYPSUM BOARD. ALL GYPSUM BOARD WITHIN GYMNASIUM TO BE IMPACT RESISTANT.
 - COORDINATE W/ MECH, PLUMBING, & ELECTRICAL DRAWINGS AND PROVIDE FRAMING AS REQUIRED TO ACCOMMODATE MECHANICAL, PLUMBING, & ELECTRICAL SYSTEMS.
 - AFF - ABOVE FINISHED FLOOR
 - ALL CEILING HEIGHTS INDICATED ARE FROM ADJACENT FINISHED FLOOR.
 - REFER TO ELECTRICAL DRAWINGS FOR FIXTURE TYPES.
 - ALL AREAS INDICATING NEW CEILING TO IMPLY DEMOLITION OF EXISTING CEILING SYSTEMS AS REQ'D THAT AREA.
 - ALL CEILING GRIDS ARE CENTERED IN ROOMS UNLESS NOTED OTHERWISE.
 - ALL MECHANICAL, ELECTRICAL AND PLUMBING ITEMS LOCATED IN ESA (EXPOSED STRUCTURE ABOVE) SHALL BE PAINTED AS DIRECTED BY ARCHITECT.
- LIGHTING/ELECTRICAL NOTES**
- COORDINATE LIGHTING LAYOUTS WITH ELECTRICAL DRAWINGS. CONTACT ARCHITECT WITH ANY DISCREPANCIES.



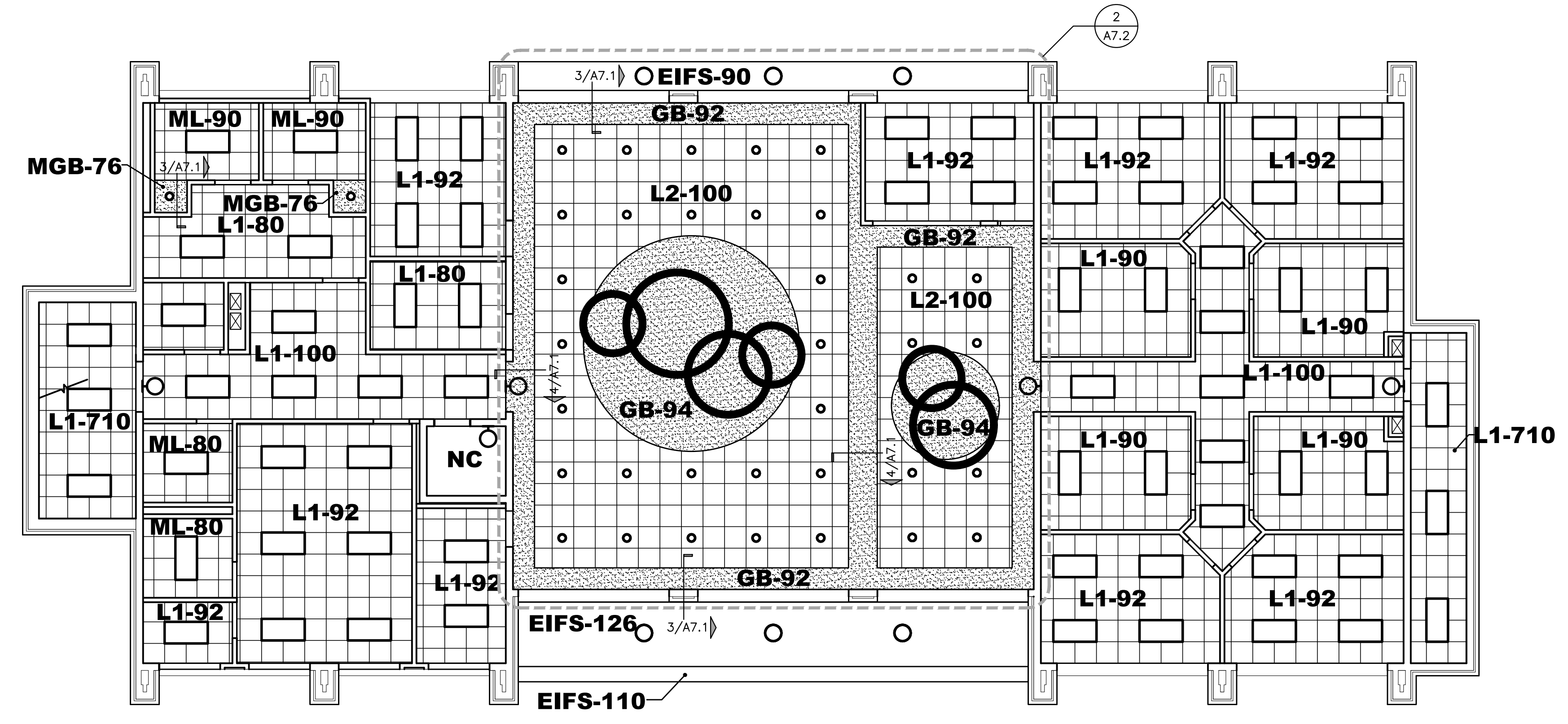
1 REFLECTED CEILING PLAN © LOWER LEVEL
SCALE: 1/8" = 1'-0"



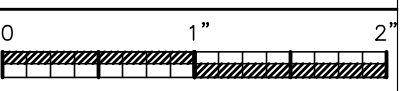
3 DETAIL © GYPSUM SOFFIT WITH LAY-IN AT CMU WALL
SCALE: 1" = 1'-0"

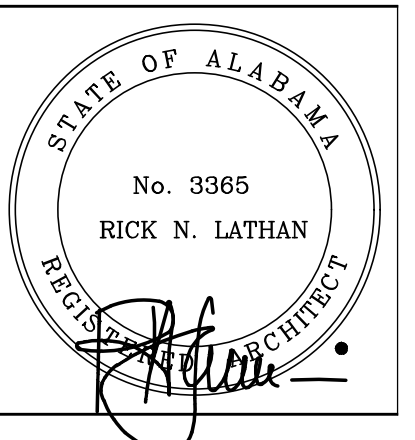


4 DETAIL © GYPSUM SOFFIT WITH LAY-IN ON BOTH SIDES
SCALE: 1" = 1'-0"



2 REFLECTED CEILING PLAN © UPPER LEVEL
SCALE: 1/8" = 1'-0"





SHEET TITLE:
FINISH FLOOR PLAN - LOWER
AND UPPER LEVEL

PROJ. MGR.: MSC
DRAWN: K. JOINER

DATE: JUNE 28, 2024

REVISIONS

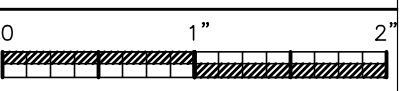
1	09.10.24	ADD#2
---	----------	-------

JOB NO. 23-125

SHEET NO:

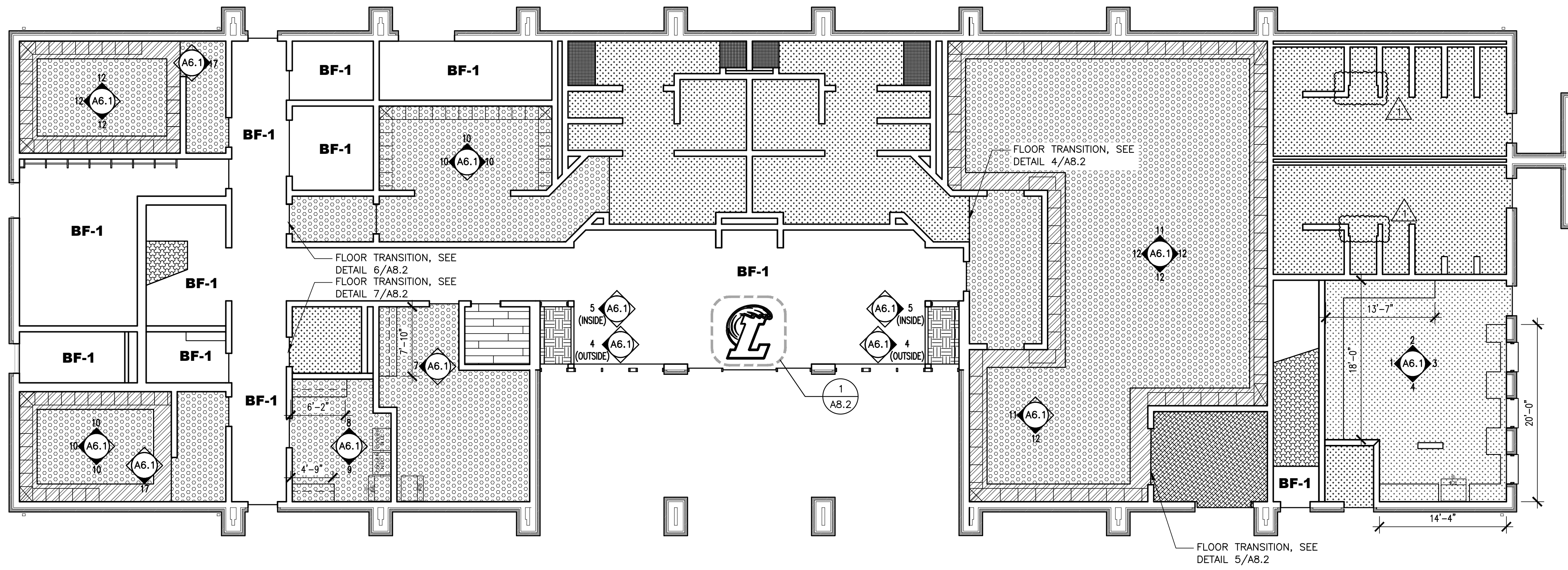
A8.1

28 OF 39

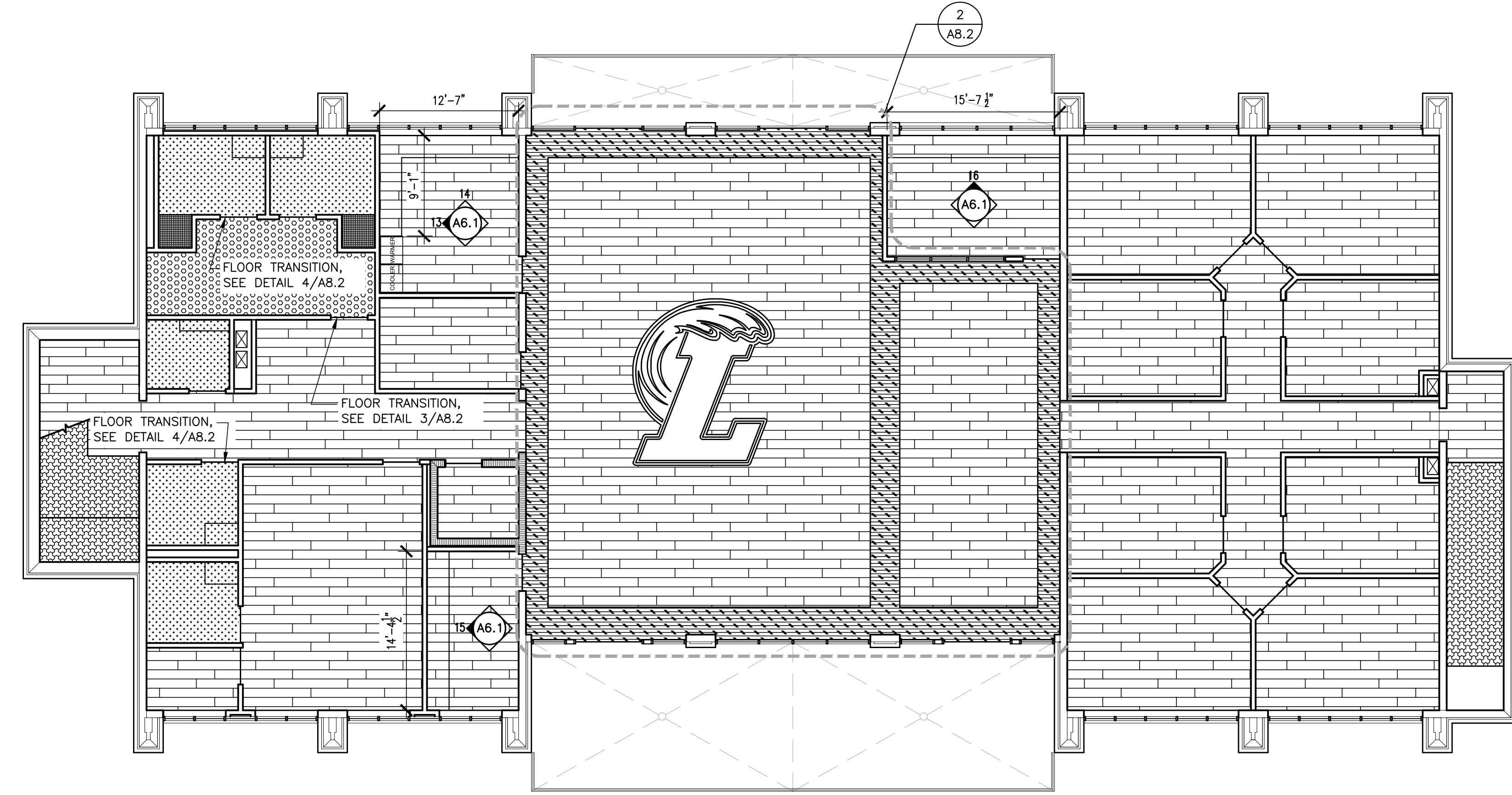


FINISH PATTERN LEGEND

	LVT-1 LUXURY VINYL TILE		LVT-2 LUXURY VINYL TILE
	LVT-3 LUXURY VINYL TILE		LVT-4 LUXURY VINYL TILE
	ERF-1 EPOXY RESIN FLOOR		PFT-1 PORCELAIN FLOOR TILE
	RF-1 RUBBER FLOOR		RF-2 RUBBER FLOOR
	RST-1 RUBBER STAIR		CPT-1 CARPET
	CPT-2 CARPET		BF-1 BOMANITE FINISH
	BF-2 BOMANITE FINISH		BF-3 BOMANITE FINISH



1 FINISH FLOOR PLAN LOWER LEVEL
SCALE: 1/8" = 1'-0"



2 FINISH FLOOR PLAN UPPER LEVEL
SCALE: 1/8" = 1'-0"