



October 21, 2024

Prospective Respondents

RE: Addendum #3 25-02 Southport Sports Complex

Please accept this as Addendum No. 3 for the above referenced solicitation.

The bid deadline is hereby extended to **2:00 pm (CDT), Tuesday, October 29, 2024.**

The following question have been received. The County's answers follow in **bold.**

1. Page A1.5 calls for the list of the equipment but there is not spec section for the kitchen tables and equipment. **Please see attached Kesco Kitchen Equipment specifications. Equals will be accepted if meets or exceeds provided specifications.**

All respondents shall acknowledge receipt of this addendum by signing and submitting, with their bid, the addendum acknowledgement form included in the Bid package.

Regards,

Ken Longstreet
Grant Procurement Administrator
Bay County Purchasing Department
(850) 248-8270.
purchasing@baycountyfl.gov



KITCHEN EQUIPMENT & SUPPLY CO.

Pensacola, FL (850) 456-1633 Mary Esther, FL (850) 243-7900 Panama City Beach, FL (850) 234-1522 Bradenton, FL (941) 417-0200 Mobile, AL (251) 450-2221

www.kescoflorida.com

To SOUTHPORT SPORTS COMPLEX
VICTORIA WILLIAMS
SOUTHPORT, FL

Project SOUTHPORT SPORTS COMPLEX

From KESCO Kitchen Equipment & Supply Company
Thomas Chapman
8100 Front Beach Road
Panama City Bch, FL 32407-4821
850-456-1633
(850)234-1522 (Contact)

Due to recent industry supply chain issues as well as raw material cost uncertainties, our factories and supply partners are not able to guarantee pricing for an extended period of time. Also, lead times provided are best estimates, and are subject to change based on factory production schedules, parts availability etc. KESCO is doing everything possible to monitor lead times and make appropriate substitutions for product available from other sources. At this time, no guaranteed lead times are available from any vendor. Please contact us if you have any questions or concerns.

ITEM 1 - THREE (3) COMPARTMENT SINK (1 REQ'D)

Advance Tabco Model FC-3-1620-18RL-X Dimensions: 43(h) x 84(w) x 26(d)

Special Value Fabricated Sink, 3-compartment, 18" right & left drainboards, bowl size 16" x 20" x 14" deep, 16 gauge 304 stainless steel, tile edge splash, rolled edge, 8" OC faucet holes, stainless steel legs with adjustable side cross-bracing, 1" adjustable stainless steel bullet feet, overall 26" F/B x 84" L/R, NSF



- 3 ea Model K-5 Drain, twist operated, 2" NPT & 1-1/2" IPS outlet connections
- 3 ea Model K-4 Support Bracket, for lever waste drain handle, (1) support required for each lever drain

WATER

	HOT SIZE	HOT AFF	HOT GPH	COLD SIZE	COLD AFF	FILTERED SIZE	FILTERED AFF	CONDENSER INLET SIZE	CONDENSER OUTLET SIZE
1									
2									

WASTE

	INDIRECT SIZE	DIRECT SIZE
1	(3) 1-1/2"	
2	2"	

PLUMBING 1 REMARKS

(1) set of 1/2" faucet holes, 8" OC

ITEM 1.1 - PRE-RINSE FAUCET ASSEMBLY, WITH ADD ON FAUCET (1 REQ'D)

T&S Brass Model B-0133-12-CR-B

EasyInstall Pre-Rinse Unit, spring action gooseneck, 8" wall mount, spray valve (B-0107), 12" add-on faucet, wall bracket, quarter-turn Cerama cartridges, low lead

- 1 kt Model B-0230-K Installation Kit, (2) 1/2" NPT nipples, lock nuts & washers, (2) short "EII" 1/2" NPT female x male



WATER

	HOT SIZE	HOT AFF	HOT GPH	COLD SIZE	COLD AFF	FILTERED SIZE	FILTERED AFF	CONDENSER INLET SIZE	CONDENSER OUTLET SIZE
1	1/2"			1/2"					

WASTE

	INDIRECT SIZE	DIRECT SIZE
1		

ITEM 1.2 - ADD ON FAUCET, FOR PRE RINSE FAUCET (1 REQ'D)

T&S Brass Model B-0156-CR

Add-on Faucet, ceramas cartridge, 12" swing nozzle



ITEM 1.3 - SHELVING, WALL MOUNTED (1 REQ'D)

Advance Tabco Model AWS-KD-60 Dimensions: 9.5(h) x 60(w) x 11.13(d)

Special Value Shelf, wall-mounted, tab-lock design, 60"W x 11-1/8"D, 1-5/8" bullnose front edge, 1-1/4"H up-turn on sides & rear, aluminum construction, NSF



ITEM 2 - REACH-IN REFRIGERATOR (1 REQ'D)

Atosa USA, Inc. Model MBF8507GR Dimensions: 83.1(h) x 54.4(w) x 31.7(d)

Atosa Refrigerator, reach-in, two-section, 54-2/5"W x 31-7/10"D x 83-1/10"H, bottom-mount self-contained refrigeration, 46.77 cu. ft., (2) locking hinged solid doors, digital temperature control, 33° to 40°F temperature range, (6) adjustable shelves, interior LED lighting, automatic evaporation, air defrost, stainless steel interior & exterior, galvanized steel back, 4" casters, R290 Hydrocarbon refrigerant, 1/5 HP, 115v/60/1-ph, 3.2 amps, cord with NEMA 5-15P, cETLus, ETL-Sanitation, ENERGY STAR®



- 1 ea 2 year labor & parts warranty, 5 years warranty on compressor
- 1 ea Surcharge 22%

ELECTRICAL

	VOLTS	CYCLE	PHASE	CONN	AFF	NEMA	AMPS	KW	HP	MCA	MOCP
1	115	60	1	Cord & Plug		5-15P	3.2		1/5		

ITEM 3 - REACH-IN FREEZER (1 REQ'D)

Atosa USA, Inc. Model MBF8503GR Dimensions: 83.1(h) x 54.4(w) x 31.7(d)

Atosa Freezer, reach-in, two-section, 54-2/5"W x 31-7/10"D x 83-1/10"H, bottom-mount self-contained refrigeration, 44.77 cu. ft., (2) locking hinged solid doors, digital temperature control, -8° to 0°F temperature range, (6) adjustable shelves, interior LED lighting, automatic evaporation, electric defrost, stainless steel interior & exterior, galvanized steel back, 4" casters, R290 Hydrocarbon refrigerant, 3/4 HP, 115v/60/1-ph, 8.6 amps, cord with NEMA 5-15P, cETLus, ETL-Sanitation, ENERGY STAR®



- 1 ea 2 year labor & parts warranty, 5 years warranty on compressor
- 1 ea Surcharge 22%

ELECTRICAL

	VOLTS	CYCLE	PHASE	CONN	AFF	NEMA	AMPS	KW	HP	MCA	MOCP
1	115	60	1	Cord & Plug		5-15P	8.6		3/4		

ITEM 4 - ICE MAKER, CUBE-STYLE (1 REQ'D)

Manitowoc Model IDT0450A Dimensions: 21.5(h) x 30(w) x 24(d)



Indigo NXT™ Series Ice Maker, cube-style, air-cooled, self-contained condenser, 30"W x 24"D x 21-1/2"H, production capacity up to 470 lb./24 hours at 70°/50° (358 lb. AHRI certified tat 90°/70°), easyTouch display with 13 different language options, date/time stamp display, automatic reminder/alert icon, one touch asset information, automatic detection of accessories, continuous operating status, programmable production options (time, weight, day or night), one touch cleaning with displayed instructions, Alpha-San anti-microbial protection, acoustical ice sensing probe, self-diagnostic technology, DuraTech™ exterior, dice size cubes, R410A refrigerant, NSF, cULus, CE, ENERGY STAR®

- 1 ea Model WARRANTY-ICE-SC 3 year parts & labor (Machine), 5 year parts & labor (Evaporator), 5 year parts & 3 years labor (Compressor), standard
- 1 ea (-161) 115v/60/1-ph, 11.9 amps
- 1 ea Model AR-10000-P Arctic Pure® Plus Primary Water Filter Assembly, includes head, shroud, hardware, mounting assembly, & (1) filter cartridge, 15,000 gallon capacity, 0-600 lbs./ice per day
- 1 ea Model WARRANTY-ARCPURE 3 year parts & labor warranty on cap, housing, hardware, & mounting assembly (does not refer to filter cartridge), standard
- 1 ea Model D570 Ice Bin, 30"W x 34"D x 50"H, with side-hinged front-opening door, side grips, 532 lbs. application capacity, AHRI certified 17.9 cu. ft., for top-mounted ice maker, Duratech exterior, NSF
- 1 ea Model WARRANTY-BIN/DISP 3 year parts & labor warranty, standard
- 1 ea Legs, 6" adjustable stainless steel, standard
- 1 ea Surcharge 5%

ELECTRICAL

	VOLTS	CYCLE	PHASE	CONN	AFF	NEMA	AMPS	KW	HP	MCA	MOCP
1	115	60	1				11.9				

WATER

	HOT SIZE	HOT AFF	HOT GPH	COLD SIZE	COLD AFF	FILTERED SIZE	FILTERED AFF	CONDENSER INLET SIZE	CONDENSER OUTLET SIZE
1				3/8"					
2									

WASTE

	INDIRECT SIZE	DIRECT SIZE
1	1/2"	
2	3/4"	

PLUMBING 1 REMARKS

Drain for ice maker

ITEM 5 - GAS FLOOR FRYER (2 REQ'D)

Atosa USA, Inc. Model ATFS-40 Dimensions: 44.4(h) x 15.6(w) x 30.1(d)



CookRite Fryer, gas, floor model, 15-3/5"W x 30-1/10"D x 44-2/5"H, 40 lb. capacity, (3) burners, milivolt control, 200°F- 400°F temperature range, (2) nickel plated baskets with coated handles, basket hanger, oil cooling zone seated in the bottom of the tank, stainless steel structure, (4) casters, cETLus, ETL-Sanitation

- 2 ea 1 year parts & labor warranty, (US only)
- 2 ea Gas type to be specified

ITEM 6 - GRIDDLE, GAS, COUNTERTOP (1 REQ'D)

Atosa USA, Inc. Model ATMG-24 Dimensions: 15.2(h) x 24(w) x 28.6(d)



CookRite Heavy Duty Griddle, gas, countertop, 24"W x 28-3/5"D x 15-1/5"H, (23-9/10"W x 19-9/10"D cooking area), 3/4" thick griddle plate, (2) stainless steel burners, standby pilots, independent manual controls, stainless steel structure, adjustable stainless steel legs, 60,000 total BTU's, cETLus, ETL-Sanitation

- 1 ea 1 year parts & labor warranty, (US only)
- 1 ea Gas type to be specified
- 1 ea Surcharge 22%

GAS

	SIZE	MBTU	KW	CONN
1	3/4"	60.0		

STEAM

	INLET SIZE	RETURN SIZE	LB/HR	PSIG (MIN)	PSIG (MAX)
1					

ITEM 7 - EQUIPMENT STAND, FOR COUNTERTOP COOKING (1 REQ'D)

Advance Tabco Model EG-LG-302-X Dimensions: 25(h) x 24(w) x 30(d)

Special Value Equipment Stand, 24"W x 30"D x 25"H (overall), 24" working height, 16 gauge stainless steel top with 1"H up-turn on sides & rear, adjustable galvanized undershelf, galvanized legs with adjustable plastic bullet feet, NSF



ITEM 7.1 - CASTERS (1 st REQ'D)

Krowne Model 28-129S

Krowne 1 5/8" Stem Caster, swivel with brake, 5" diameter, 220 lbs per caster load capacity, grease resistant, raises height of equipment 6" (set of 4)



ITEM 8 - GAS CONNECTOR HOSE KIT / ASSEMBLY (3 kt REQ'D)

T&S Brass Model HG-4D-48SK

Safe-T-Link Gas Connector Kit, 3/4" connection, 48" hose, stainless steel braiding with extruded coating, (1) Quick-Disconnect, (2) Swivelink fittings, (1) 90° elbow, ball valve, restraining cable adjustable for 3' to 5', 180,000 BTU / hr minium flow capacity



ITEM 9 - WORK TABLE, STAINLESS STEEL TOP (1 REQ'D)

Advance Tabco Model FLAG-304-X Dimensions: 37(h) x 48(w) x 30(d)

Special Value Work Table, 48"W x 30"D, 16 gauge 430 stainless steel top with 1-1/2"H rear up-turn, 18 gauge galvanized adjustable undershelf, galvanized legs with adjustable plastic bullet feet, NSF



ITEM 10 - HAND SINK (3 REQ'D)

Advance Tabco Model 7-PS-60 Dimensions: 13(h) x 17.25(w) x 15.25(d)

Hand Sink, wall mounted, 14" wide x 10" front-to-back x 5" deep bowl, 20 gauge 304 stainless steel, with splash mounted gooseneck faucet, basket drain, wall bracket, NSF, CCSAus



WATER

	HOT SIZE	HOT AFF	HOT GPH	COLD SIZE	COLD AFF	FILTERED SIZE	FILTERED AFF	CONDENSER INLET SIZE	CONDENSER OUTLET SIZE
1	1/2"			1/2"					

WASTE

	INDIRECT SIZE	DIRECT SIZE
1		1-1/2"

PLUMBING 1 REMARKS

(1) set of 1" faucet holes, 4" OC, splash mount

ITEM 11 - MOP SINK (1 REQ'D)**Advance Tabco Model 9-OP-20-EC-X Dimensions: 10(h) x 25(w) x 21(d)**

Special Value Mop Sink, floor mounted, 25"W x 21"D x 10"H (overall), 20"W x 16" front-to-back x 6" deep (bowl size), free flow drain with 2" IPS outlet, stainless steel construction

**WATER**

	HOT SIZE	HOT AFF	HOT GPH	COLD SIZE	COLD AFF	FILTERED SIZE	FILTERED AFF	CONDENSER INLET SIZE	CONDENSER OUTLET SIZE
1									

WASTE

	INDIRECT SIZE	DIRECT SIZE
1		2"

ITEM 11.1 - SERVICE FAUCET (1 REQ'D)**Krowne Model 16-127**

Krowne Royal Series Service Faucet, splash-mounted, 8" centers, 6-1/2" long heavy cast spout with bail hook & hose thread, bracket can mount above or below, vacuum breaker, rough brass, low lead compliant, NSF, Includes internal check valves to prevent backflow & cross contamination

1 ea 3 year warranty, standard

**WATER**

	HOT SIZE	HOT AFF	HOT GPH	COLD SIZE	COLD AFF	FILTERED SIZE	FILTERED AFF	CONDENSER INLET SIZE	CONDENSER OUTLET SIZE
1	1/2"			1/2"					

WASTE

	INDIRECT SIZE	DIRECT SIZE
1		

ITEM 11.2 - SHELVING, WALL MOUNTED (1 REQ'D)**Advance Tabco Model K-245 Dimensions: 7.5(h) x 24(w) x 8(d)**

Utility Shelf, wall-mounted, 24"W x 8"D, 1-1/2" upturn on rear & sides, (2) mop holders, (3) rag hooks, stainless steel, NSF

**ITEM 12 - WIRE SHELVING UNIT (1 REQ'D)****Metro Model SE-245474K4-S-4 Dimensions: 74.5(h) x 54(w) x 24(d)**

Super Erecta® Starter Shelving Unit, 54"W x 24"D x 74"H, (4) wire shelves, (4) posts, Metroseal Gray epoxy-coated corrosion-resistant finish with Microban® antimicrobial protection, KD

**ITEM 13 - WORK TABLE, STAINLESS STEEL TOP (2 REQ'D)****Advance Tabco Model ELAG-304-X Dimensions: 35.5(h) x 48(w) x 30(d)**

Special Value Work Table, 48"W x 30"D, 16 gauge 430 stainless steel top, 18 gauge galvanized adjustable undershelf, galvanized legs with adjustable plastic bullet feet, NSF



ITEM 14 - EXHAUST HOOD (1 REQ'D)

Accurex Model Q206488

HOOD SYSTEM, 72"L X 48"W X 24"H EXHAUST ONLY WALL CANOPY W/ FIRE SUPPRESSION SYSTEM, GAS VALVE, FIRE FIELD HOOK-UP, ROOF CURB, RF FV FAN, UNTEMPERED SUPPLY FAN, AND CONSTANT VOLUME KITCHEN CONTROLS

FIRE CABINET MOUNTED ON LEFT
 AIR SUPPLY PLENUM (ASP) ON FRONT
 STAINLESS STEEL BACKSPLASH PANEL 80" HING 85" LONG
 STAINLESS STEEL BACKSPLASH PANEL ON RIGHT 80" HIGH 48" LONG
 18 IN HIGH CEILING ENCLOSURES

ITEM 15 - WORK TABLE, CABINET BASE HINGED DOORS (4 REQ'D)

John Boos Model 4CH6R5-2484 Dimensions: 40.75(h) x 84(w) x 24(d)

Work Table, cabinet base with (2) sets of hinged doors, 84"W x 24"D, 16/300 stainless steel top with 5" backsplash, Stallion Safety Edge front, 18/430 stainless steel wrap, stainless steel legs with adjustable feet, NSF



ITEM 16 - WORK TABLE, STAINLESS STEEL TOP (2 REQ'D)

Advance Tabco Model SLAG-308-X Dimensions: 35.5(h) x 96(w) x 30(d)

Special Value Work Table, 96"W x 30"D, 16 gauge 430 stainless steel top, 18 gauge adjustable stainless steel undershelf, stainless steel legs & adjustable bullet feet, NSF



- 2 ea Model SS-2015-X Special Value Deluxe Drawer, 20"W x 15"D x 5" deep drawer pan insert, stainless steel, with drawer slides
- 2 pr Model TA-90 Drawer Adapter/Non Catalog Tables, specify table width (pair)

ITEM 17 - DISPLAY CASE, HEATED DELI, COUNTERTOP (1 REQ'D)

Hatco Model GRHD-3PD Dimensions: 30.12(h) x 45.5(w) x 26(d)

Glo-Ray® Heated Display Case, countertop, see-thru design, (3) pan dual shelf, pre-focused infrared top heat, tempered glass sides, rear sliding doors, stainless steel & aluminum construction, with 4" legs, 1755 watts, cULus, UL EPH Classified, Made in USA



- 1 ea NOTE: Sale of this product must comply with Hatco's Minimum Resale Price Policy; consult order acknowledgement for details
- 1 ea NOTE: Includes 24/7 parts & service assistance, call 800-558-0607
- 1 ea One year on-site parts & labor warranty, plus one additional year parts only warranty on all Glo-Ray metal sheathed elements
- 1 ea 120v/60/1-ph, 1755 watts, 14.6 amps, NEMA 5-15P (domestic voltage), standard
- 1 ea Model SS Stainless steel (available at time of purchase only)

ELECTRICAL

	VOLTS	CYCLE	PHASE	CONN	AFF	NEMA	AMPS	KW	HP	MCA	MOCP
1	120	60	1	Cord & Plug		5-15P	14.6	1.755			

ITEM 18 - AIR CURTAIN (2 REQ'D)

Mars Air Systems Model LPN248-1UA-OB

LoPro Series 2 Air Curtain, for 48" wide door, unheated, galvanized steel cabinet, obsidian black powder coat finish, (1) 1/6 HP motor, 115v/60/1-ph, ETL



- 2 ea 5 year warranty, standard
- 2 ea 1 year warranty for all parts (except filters), standard
- 2 ea Mechanical switches

ELECTRICAL

	VOLTS	CYCLE	PHASE	CONN	AFF	NEMA	AMPS	KW	HP	MCA	MOCP
1	115	60	1						1/6		

ITEM 19 - SANDWICH / SALAD PREPARATION REFRIGERATOR (1 REQ'D)**Atosa USA, Inc. Model MSF8302GR Dimensions: 44.3(h) x 48.2(w) x 30(d)**

Atosa Sandwich/Salad Top Refrigerator, two-section, 48-1/5"W x 30"D x 44-3/10"H, includes (12) 1/6 stainless steel pans, rear-mounted, self-contained refrigeration, 13.4 cu. ft., (2) solid hinged self-closing doors, digital temperature control, 33° to 40°F temperature range, (2) adjustable shelves, 10" poly cutting board, ventilated refrigeration, automatic evaporation, air defrost, stainless steel interior & exterior, galvanized steel back, 5" casters, R290 Hydrocarbon refrigerant, 1/7 HP, 115v/60/1-ph, 2.3 amps, cord, NEMA 5-15P, cETLus, ETL-Sanitation



1 ea 2 year labor & parts warranty, 5 years warranty on compressor

1 ea Surcharge 22%

ELECTRICAL

	VOLTS	CYCLE	PHASE	CONN	AFF	NEMA	AMPS	KW	HP	MCA	MOCP
1	115	60	1	Cord & Plug		5-15P	2.3		1/7		

-Serving The Foodservice Industry Since 1976-

Pricing subject to manufacturer price increases after 7 days, sales tax, shipping and handling charges, small order charges, miscellaneous vendor charges, and credit card fees.

Any and all special order and or custom fabricated items are non refundable and non returnable.

Thank you for the opportunity to serve you, we appreciate your business!

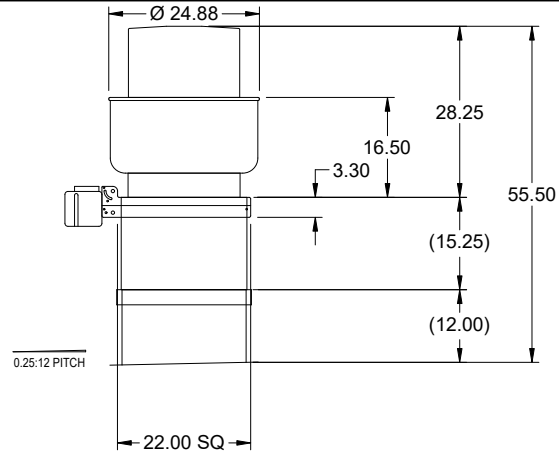
FREIGHT NOT INCLUDED IN QUOTE

Model: XCUBE-130-5

Belt Drive Upblast Centrifugal Roof Exhaust Fan

Previously: No Change

Dimensional	
Quantity	1
Weight w/o Acc's (lb)	66
Weight w/ Acc's (lb)	102
Weight w/ Acc's and Curb (lb)	125
Max T Motor Frame Size	56
Standard Curb Cap Size (in.)	22 x 22
Roof Opening (in.)	14.5 x 14.5

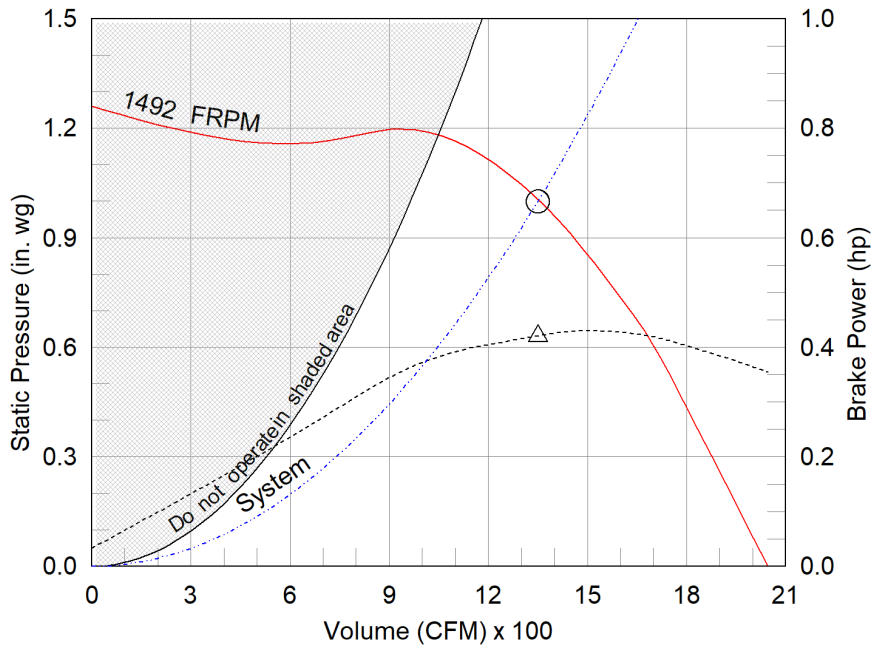


Performance	
Requested Volume (CFM)	1,350
Actual Volume (CFM)	1,350
Total External SP (in. wg)	1
Fan RPM	1492
Operating Power (hp)	0.42
Elevation (ft)	10
Airstream Temp.(F)	70
Air Density (lb/ft3)	0.075
Drive Loss (%)	9.2
Tip Speed (ft/min)	5,101
Static Eff. (%)	56

Misc Fan Data	
Fan Eff. Index (FEI)	-
Outlet Velocity (ft/min)	1,055

Motor	
Motor Mounted	Yes
Size (hp)	1/2
Voltage/Cycle/Phase	208/60/3
Enclosure	ODP
Motor RPM	1725
Efficiency Rating	Standard
Windings	1
NEC FLA* (Amps)	2.4
Min. Circuit Ampacity (MCA)	3
Max. Overcurrent Protection (MOP)	15
Short Circuit Current Rtg (SCCR)	5 kA

OVERALL HEIGHT MAY BE GREATER DEPENDING ON MOTOR, ADAPTER, AND/OR HINGE BASE.



- △ Operating Bhp point
- Operating point at Total External SP
- Fan curve
- - - System curve
- - - Brake horsepower curve

Notes:

All dimensions shown are in units of in.
 *NEC FLA, MCA and MOP are for reference only – based on tables 430.248 or 430.25 of National Electric Code 2020. Actual motor FLA may vary, for sizing thermal overload, consult factory.
 MCA and MOP values shown only account for the motor, not accessories (damper actuator, field supplied VFD, etc).
 LwA - A weighted sound power level, based on ANSI S1.4
 dBA - A weighted sound pressure level, based on 11.5 dB attenuation per Octave band at 5 ft - dBA levels are not licensed by AMCA International
 Sones - calculated using ANSI/AMCA 301 at 5 ft
 The motor provided on this fan is inverter ready and meets NEMA MG1 Part 31.4.4.2

Sound Power by Octave Band

Sound Data	62.5	125	250	500	1000	2000	4000	8000	LwA	dBA	Sones
Inlet	76	74	81	71	63	63	59	57	75	64	12.8



Model: XCUBE-130-5

Belt Drive Upblast Centrifugal Roof Exhaust Fan

Standard Construction Features:

- Aluminum housing - Backward inclined aluminum wheel - Curb cap with prepunched mounting holes - Motor and drives isolated on shock mounts - Drain trough - Ball bearing motors - Adjustable motor pulley - Adjustable motor plate - Fan shaft mounted in ball bearing pillow blocks - Bearings meet or exceed temperature rating of fan - Static resistant belts - Corrosion resistant fasteners - Internal lifting lugs

Selected Options & Accessories:

Motor VFD Rated without Shaft Grounding Protection
Larger Curb Cap Size - 22 Square
UL/cUL 762 Listed - "Power Ventilators for Rest. Exh. Appliances"
Switch, NEMA-1, Toggle, Shipped with Unit
Junction Box Mounted & Wired
Curb Extension-Galv., VCE-22-G15.25
Hinge, Factory Installed
High Temp Curb Seal Rated for Continuous Duty at 1500 F (Factory Attached)
Grease Trap (PN 475538)
Heat Baffle (Attached)
Unit Warranty: 1 Yr (Standard)

Selected Sub Marks

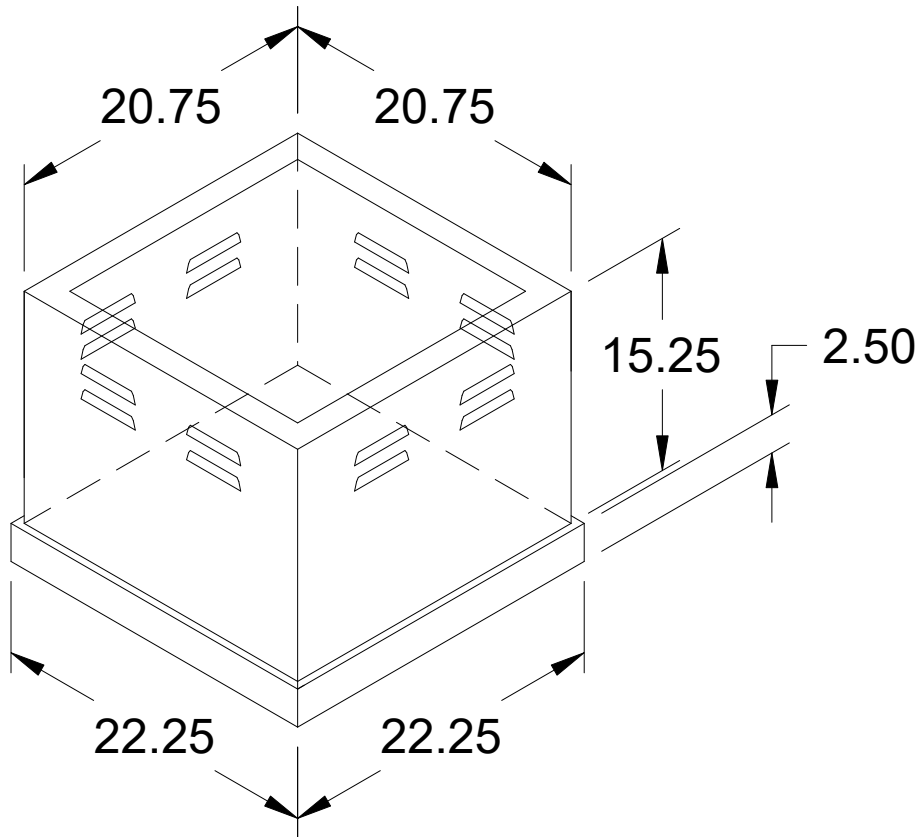
See individual submittals for full details
GPIP-22-G12

Vented Curb Extension

Model: VCE

Standard Construction Features:

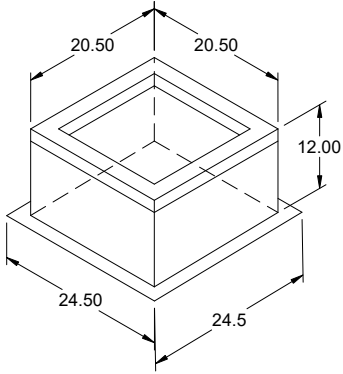
- Curb Extension mounts between the fan and the roof curb - Constructed of either 18 ga galvanized or optional 0.064 in. aluminum - Louvered vents are designed to vent heat in restaurant exhaust applications - Designed to provide required 18 in. minimum discharge height above roof line when used with an 8 in. high roof curb and Accurex model spun aluminum upblast exhaust fan per NFPA 96. NOTE: Damper Trays are not available.



ISOMETRIC VIEW

Notes: All dimensions shown are in units of in.





Model: GPIP

Pitched Roof Curb

Standard Construction Features:

0.25:12 PITCH

- Roof Curb fits between the building roof and the fan mounted directly to the roof support structure - Constructed of either 18 ga galvanized steel or 0.064 in. aluminum - Designed for pitched roofs - Straight sided without a cant - Wood nailer for attachment of roof flashing material - 2 in. mounting flange - 1 in. thick 3 lb density insulation - Height - Available from 12 in. to 24 in. as specified in 0.5 in. increments. Notes: - The maximum roof opening dimension should not be greater than the "Actual" top outside dimension minus 2 in.. - The minimum roof opening dimension should be at least 2.5 in. more than the damper dimension or recommended duct size. - The Roof Opening Dimension may or may not be the same as the Structural Opening Dimension.

General

Tag	Qty	Model	Sizing Method	Undersizing (in.)	Pitch (in.)	Pitch Run	Weight (lb)	Shipped Assembled	Union Label
	1	GPIP-22	Nominal	1.5	0.25	Long Side	23	Yes	No Preference

Dimensions

Curb Height (in.)	Nominal Outside Width (in.)	Nominal Outside Length (in.)	Actual Outside Width (in.)	Actual Outside Length (in.)	Actual Inside Width (in.)	Actual Inside Length (in.)	Flange Width (in.)	Flange Length (in.)	Hinge Base Width* (in.)	Hinge Base Length* (in.)
12	22	22	20.5	20.5	17	17	24.5	24.5	21	21

*May not be applicable

Accessories

Material	Security Bars	Liner	Insulation (in.)	Insulation R Value
Galvanized	No	No	1	R4.3

XBDW Type 1, Baffle Filter Double Wall - Exhaust Only Wall Canopy

Model	Hood Length (in.)	Width (in.)	Bottom Width (in.)	Height (in.)		Exhaust Volume (CFM)	Exhaust Rate (CFM)	Exhaust SP (in. w.g.)	Double Island
				Front	Back				
XBDW	72	48	48	24	24	1350	225	0.462	No

Selected Options & Accessories:

Option or Accessory	Description
Mounting Height	80 in. off Finished Floor.
Double Shell Front	Listed for Zero Clearance to Combustibles.
Integral Air Space	Factory Mounted on Back - 3" wide 21 lbs
Non-Integral Air Space	Factory Mounted on Right - 1" wide Zero Clearance Unfinished End
Ceiling Enclosures	18 in. High on Left Front Right
Filter Type	Stainless Steel Baffle Filters 20 lbs
Backsplash Panel	80 in High 85 in Long 0 in Wide 94 lbs
Right Sidesplash	80 in High 48 in Long 0 in Wide 53 lbs

Material: 430 SS Where Exposed
UL Listing: UL 710 w/out Exhaust Fire Damper
Features:
 Performance Enhancing Lip (PEL)
 Standing Seam Construction for Superior Strength
 Stainless Steel Finish for Higher Corrosion Resistance
Hood End Conditions:
 Back Wall - Limited Combustible
 Right Full Wall - Full Combustible

Section Data:

Section Num.	Length (in.)	Volume (CFM)	SP (in. wg)	Filter Qty		Filter Ht. (in.)	Cooking Load	Light Qty	Light Type	Foot Candles	Drain Location	Hood Weight (LBS)
				16" W	20" W							
1	72	1350	0.462	2	2	20	Heavy	3	Incandescent / CFL	42.82	Left/Right	212.63

Exhaust Collar Data:

Section Num.	Collar Num.	Collar Size (LxW) in. or Diameter (in.)	Pos. Off Left (in.)	Pos Off Back (in.)	Velocity (fpm)	Mounting Option
1	1	13 x 9	36	6.5	1662	Factory Mounted Exhaust Collar(s)

External Supply Plenum Data:

Supply: 1080 CFM MUA: 1080 CFM AC: 0 CFM

Section Num.	Plenum Num.	Side	Type	Length (in.)	Width (in.)	Height (in.)	Volume (CFM)	SP (in. wg)	Insulated	MBD	LED Lights
1	1	Front	Air Curtain Supply (ASP)	85	14	10	1080	0.10	No	Yes	No

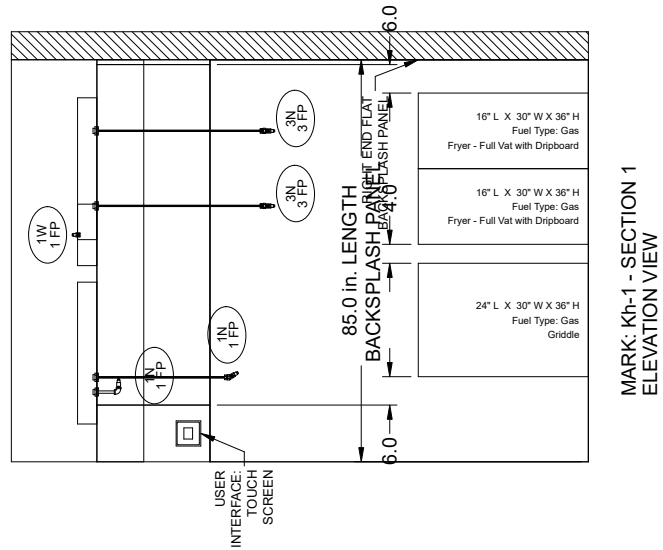
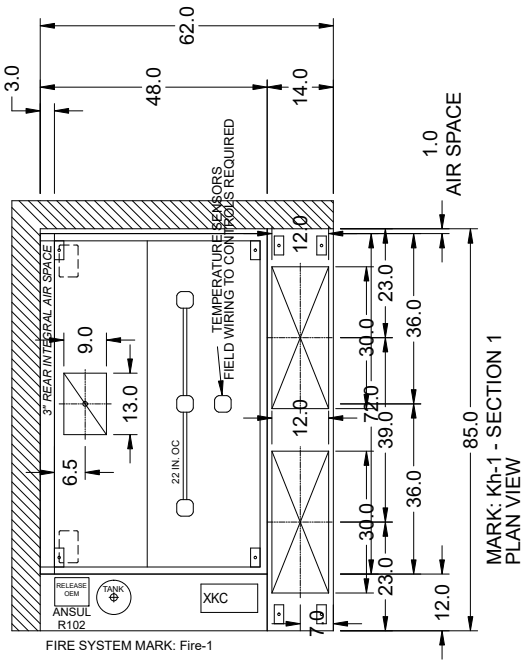
External Supply Collar Data:

Section Num.	Plenum Num.	Side	Collar Num.	Collar Size (LxW) in. or Diameter (in.)	Pos. Off Left (in.)	Pos. Off Front (in.)	Velocity (fpm)	Mounting Option
1	1	Front	1	30 x 12	23	7	216	Factory Mounted Supply Collar(s)
1	1	Front	2	30 x 12	62	7	216	Factory Mounted Supply Collar(s)

Utility Cabinet Data:

Descripton	Length (in.)	Width (in.)	Height (in.)	Weight (lbs)
Left Utility Cabinet	48	12	24	134

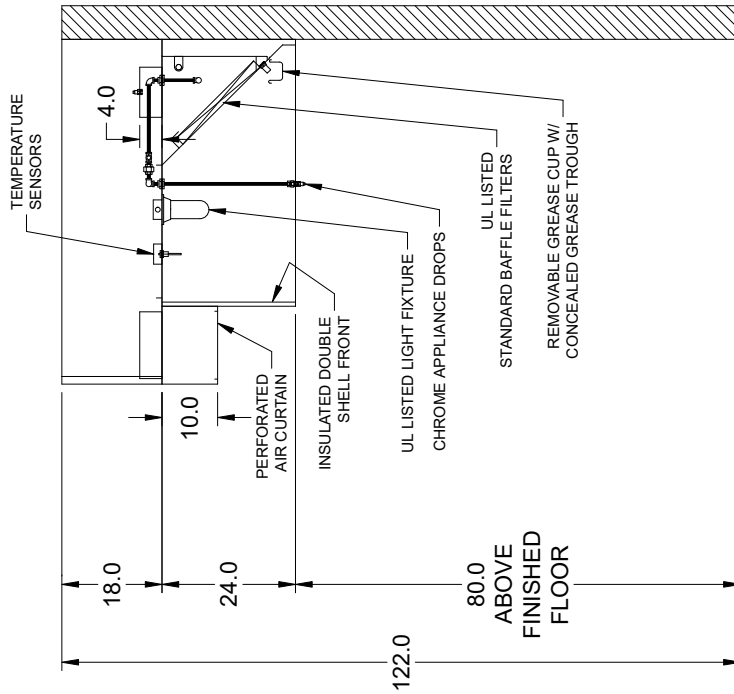




NOTE: All dimensions are in units of in.

Hanger Bracket Locations			
Sec #	Brkt #	Distance Off Left (in)	Distance Off Front (in)
1	1	3.50	2.50
1	2	68.50	2.50
1	3	3.50	44.00
1	4	68.50	44.00

Bracket Mounting Position for a 4 Bracket Hood	
3	4
1	2
BACK	
FRONT	



MARK: Kh-1

NOTE: All dimensions are in units of in.

Ansul R-102 Wet Chemical Fire Suppression System

Scope:
Pre-Pipe With Parts and Factory Coordinated Installation

Hood Fire Suppression System

Detection Type	Mechanical
Coverage	Appliance Specific
Hood Mark(s) Connected	Kh-1
Mounting Location	Utility cabinet on hood (see hood submittal for more visual detail)
System Size	3 Gallon
Flow Points	Maximum of 11 and 9 are utilized.

Options and Accessories for Hood Fire System Provided from Factory

Gas Valve	2", mechanical
Manual Pull Stations	QTY of 1
Microswitch	QTY of 1
Alarm Initiating Switch	QTY of 1
Metal Blow Off Caps	Included

Important Notes

- The manner in which the parts included in the scope of this fire system are supplied may vary. They could be shipped from the fire suppression manufacturer, shipped loose with the hood, connected directly to the hood, or supplied directly to the installing distributor.
- Must maintain 8 inch clearance between top of hood and pipe connections for installation (includes piping and workspace clearance).
- The amount of supply pipe that should not be exceeded per system is 32 ft., which includes all pipe used along the length the hood, between hoods, and the pipe needed to connect to the tanks where they are mounted.
- Pull station locations must be a minimum of 10 ft. and a maximum of 20 ft. from the hoods and in the path of egress. They also must be 40-48 in. from the finished floor.
- Systems are pre-piped for a specific appliance line-up. If appliance types and sizes differ from what is shown on the hood submittal, this may result in a field re-pipe which is outside the scope defined here.
- If the collars on the hood are shipped loose, the detection line will not be installed on the hood and the parts will ship loose.

Gas Valve

Quantity: 1
Ansul
Mechanical
2 in.



ACCUREX

Labor Information:

Hook-up of detection line and supply line is included.
Surface mounting of the manual pull station in a pre-determined location is included.
Charging and arming of the system is included.
Permit Included
Hood Puff Test Fee Included

Items which may be supplied by the factory, but are not installed or hooked-up by the factory OR the installing distributor:

Gas valve (not applicable for PCU)
Microswitch(es)
Remote mounted cabinets, enclosures, or tank brackets

Not included unless explicitly stated elsewhere in the quote as included:

Special, signed, or sealed drawings required to satisfy a state or local code
Parts or labor required to correct piping due to cooking equipment changes or deviation from approved drawings
More than two trips to the jobsite, special transportation, or overnight lodging requirement in remote areas. Typical travel distance is defined as the first 50 miles from the distributor's office
A shut-off device (e.g. shunt-trip breaker) for electric cooking equipment
All electrical connections required to shut down fan(s), electric cooking equipment, activate an alarm system, etc. aside from what is explicitly stated as "factory-wired" in the Accurex control's scope (if provided)
Installation of the gas shut-off valve
Pre-test
Full dump test or any other system test requirement outside of a standard puff test
Special classes or additional labor for access to security sensitive areas
Union labor, government labor, or prevailing wages required for field hook-up
Any dismantling or reassembly required where access to the fire suppression piping has been blocked
Plan examination fees
Rough-in conduit for remote pull station (for flush mounted pull station) or gas valve
Additional remote pull stations beyond the quantity specified in the submittals

Constant Volume

Accurex Kitchen Controls

Standard Construction Features:

Includes control system, Fan Starters (unless otherwise stated), Temperature Sensors, Touchscreen. IMC 507.2.1.1 compliant.

Options & Accessories:

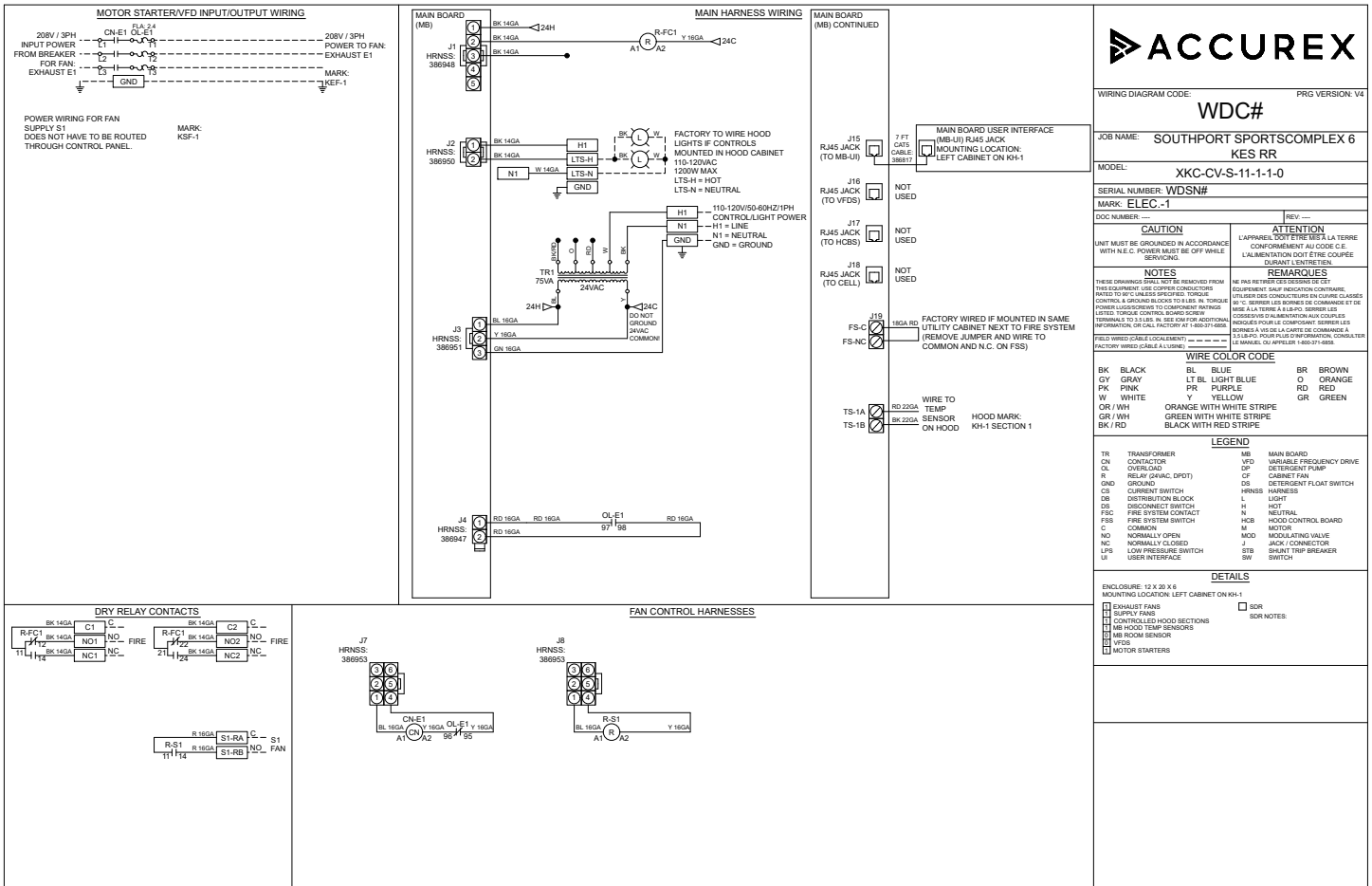
Mounting Option	Left Cabinet on Kh-1
Exhaust Fan Quantity	1
Supply Fan Quantity	1
Hood Light Control	Yes
User Interface	Full Color Touchscreen
Touchscreen Mounting Location	Utility Cabinet - Left End of Hood - Left Cabinet on Kh-1
Additional Fire Contacts	Additional set of dry contacts (2 NO, 2 NC Total)
Exhaust During Fire	Exhaust fans will run at max speed when in fire mode

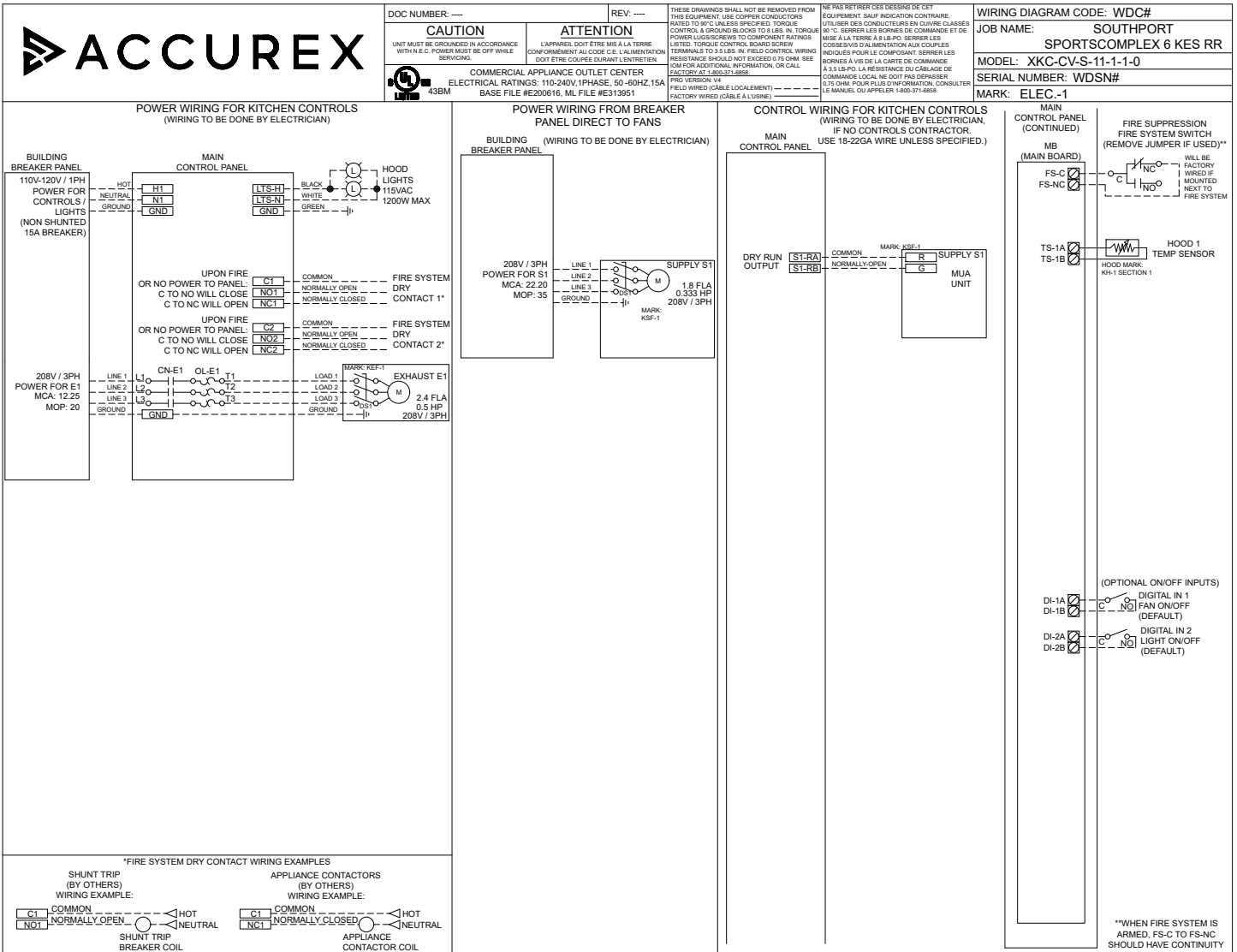
Controlled Fans:

Fan Mark	Fan Type	Supplied By	Phase	HP	Voltage	NEC FLA	Starter/VFD Required	Starter/VFD Provided
Kef-1	Exhaust	Manufacturer	3	0.5	208	2.4	Yes	Yes
Ksf-1	Supply	Manufacturer	3	0.333	208	1.8	Yes	No

Controlled Hood Sections and Fan Relationships:

Kh-1 Section - Number of Sensors = 1	
	Exhaust Fan Name - Kef-1
	Supply Fan Name - Ksf-1





XMSX-109-H12-4

Unit Performance

Design Conditions					
Elevation (ft)	Summer		Winter (°F)	Supply (CFM)	Outdoor Air (CFM)
	DB (°F)	WB (°F)			
10	93.4	81.4	35.6	1,080	1,080

Unit Specifications					
Qty	Weight (lb)	Cooling Type	Heating Type	Unit Installation	Unit ETL Listing
1	1,189 (+/- 5%)	Packaged DX	None	Outdoor/Indoor	UL / cUL 1995

Configuration				
Unit Orientation	Unit Configuration	Outdoor Air Intake	Return Air Intake	Supply Air Discharge
Horizontal	Constant Volume 100% OA	End	-	Bottom

Cooling Specifications								
Type	Refrigerant	Capacity (MBH)		Lead Compressor Type	EER		Performance (DB/WB)	
		Total	Sensible		Condensing Section	Design Condition	EAT (°F)	LAT (°F)
Packaged DX	R-410a	47.6	20.5	Standard Scroll	13.2	12.6	93.4 / 81.4	76.2 / 71.5

Air Performance									
Type	Total Volume (CFM)	External SP (in. wg)	Total SP (in. wg)	RPM	Operating Power (hp)	Fan			
						Qty	Type	Size (in.)	Drive-Type
Supply	1,080	0.34	0.4	738	0.17	1	Forward Curve	9	Belt-Drive

Motor Specifications					
Motor	Qty	Size (HP)	Enclosure	Efficiency	RPM
Supply Fan Motor	1	1/3	ODP	Standard	1725

Electrical Specifications				
Power Supply	Rating (V/C/P)	MCA (A)	MOP (A)	SCCR
Unit	208/60/3	22.2	35	5kA



CONSTRUCTION FEATURES AND ACCESSORIES

Unit	
Unit Installation - Outdoor	Std
Unit Construction - Double Wall	X
Wall Insulation - 1in. fiberglass - Tempering on	X
Base Insulation - 1in. fiberglass - entire unit base pan	Std
Paneled Bottom - Sheet metal liner for base insulation	
Corrosion Resistant Fasteners	Std
Access and Connections - Right side when facing intake	X
Service Access - Removable lift off panels	X
Unit Finish - G90 Galvanized	X
Finish Color	
Supply Fan - Belt-drive, forward-curved	X
Supply Fan and Motor Vibration isolation - Neoprene	X
Controls	
Unit Controls - Terminal strip	X
Remote Panel	
BMS Communication	
BMS Protocol	
Temperature Control	
Supply Fan Control	
Unoccupied Mode (Night Setback)	
Control Accessories	
Remote display	
Heating Inlet Air Sensor	
Cooling Inlet Air Sensor	X
Dirty Filter Switch	
Fire Stat Type III (Ships loose)	
120V/24V Smoke Detector (Ships loose)	
Inlet Damper End Switch	
External Cooling Lockout Relay	
Freeze Protection (Supply Air Low Limit)	
Auxiliary Supply Starter Contacts	
Auxiliary Exhaust Starter Contacts	
Heating Coil Freeze Protection	
Airflow Proving Monitoring Contact	

Accessories	
Factory Installed, Lockable, NEMA 3R Disconnect	Std
Weatherhood - Aluminum Mesh filtered	X
Supply Air Filters	
Outdoor Air Inlet Damper - Low leakage	X
Supply Air Outlet Damper	
Return Air Damper	
Diffuser	
Roof Curb - GPIIP	X
Combination Curb	
Electrofin Coil Coating	
Fan Bearing Extended Lube Lines	
Inlet Damper Module	
Spare Belts	
Spare Filters	
Motor with Shaft Grounding	
Service Outlet	
Service Lights	
Warranty Options	
Unit Warranty - 1 Year	X
5 Year Compressor Warranty	

Standard Option	Std
Not Included	
Included	X

Notes
 Damper(s) supplied are low leakage, motorized VCD-23 (leakage rate of 3 CFM/ft² @ 1 in.wg), Class 1A

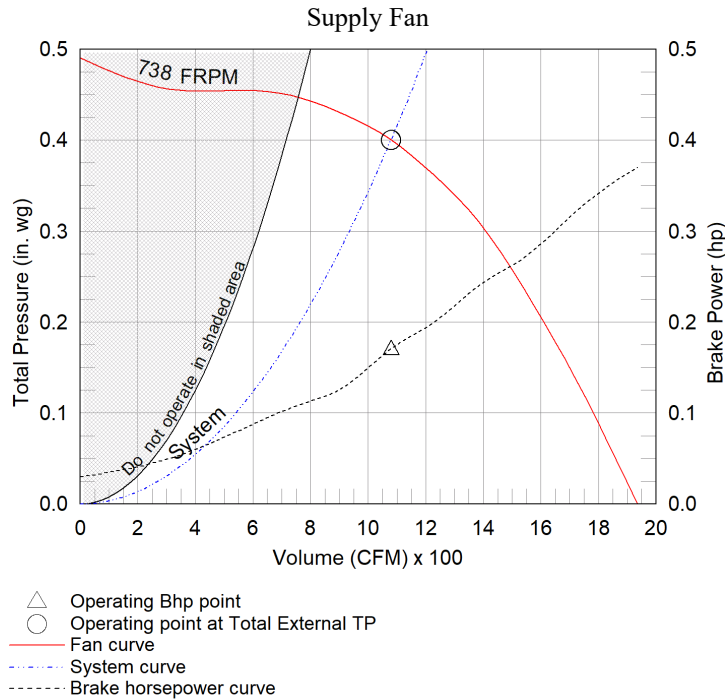


Fan Charts And Performance

Supply Fan Performance									
Total Volume (CFM)	External SP (in. wg)	Total SP (in. wg)	RPM	Operating Power (hp)	Motor		Fan		
					Qty	Size (HP)	Qty	Type	Drive-Type
1,080	0.34	0.4	738	0.17	1	1/3	1	Forward Curve	Belt

Pressure Drop (in. wg)							
Diffuser	Weatherhood	Filter	Damper	Cooling	Heating	External	Total
-	0.014	-	0.01	0.035	-	0.34	0.4

Sound Performance in Accordance with AMCA										
Sound Power by Octave Band								Lwa	dBA	Sones
62.5	125	250	500	1000	2000	4000	8000			
84	82	69	62	59	56	52	44	69	58	8.2



Cooling Specifications

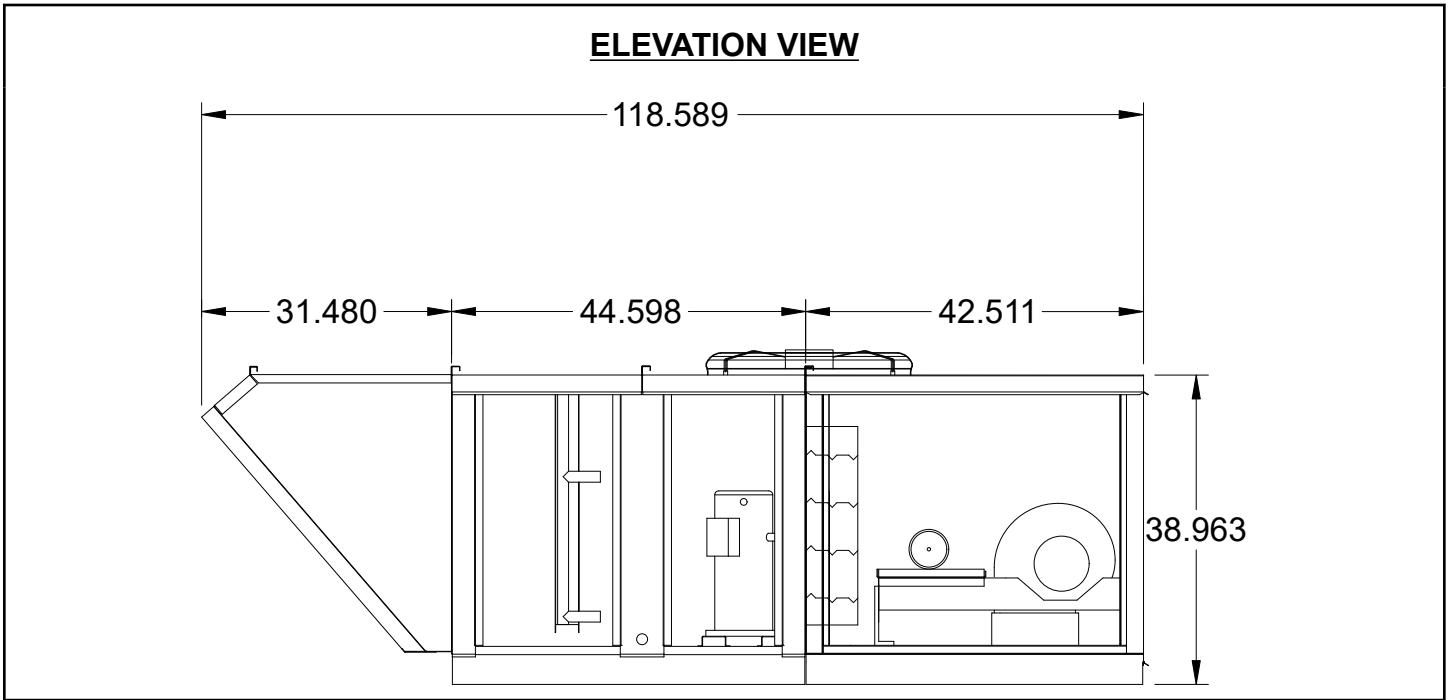
Cooling Performance								
Type	Refrigerant	Capacity (MBH)		Lead Compressor Type	EER		Performance (DB/WB)	
		Total	Sensible		Condensing Section	Design Condition	EAT (°F)	LAT (°F)
Packaged DX	R-410a	47.6	20.5	Standard Scroll	13.2	12.6	93.4 / 81.4	76.2 / 71.5

Coil Information						
PDX Coil Model	Fins Per Inch	Rows Deep	Suction Temp. (°F)	Face Velocity (ft/min)	Refrigerant Velocity (ft/min)	
DX38S01S10-30x30	10	1	39.9	173	2,412	

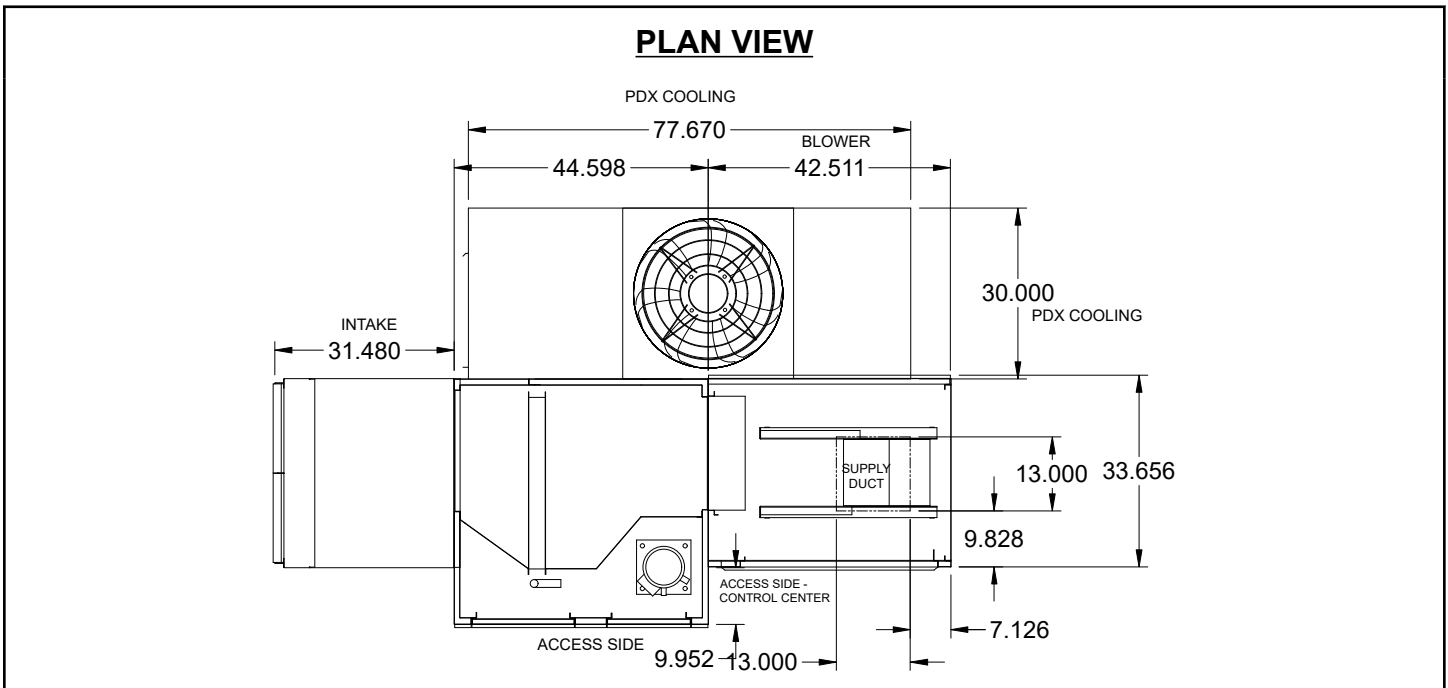
Unit Details
Refrigerant charges provided by the factory are approximate and may require field adjustment
Refrigeration components servicable without affecting airflow
Hermetic scroll type compressor(s)
Compressor(s) mounted on neoprene vibration isolation
Crankcase heater on compressor(s)
Liquid-line filter drier
Moisture-indicating sight glass

Thermal expansion valve
Refrigerant low pressure switch (auto reset)
Refrigerant high pressure switch (manual reset)
Service/charging valves
Low sound, direct drive condensing fans
Insulated, double sloped, stainless steel drain pan
Copper tube, aluminum fin coil construction

***Face velocity is below 200 ft/min. This is outside of the scope of AHRI Standard 410 for rating coil performance.**

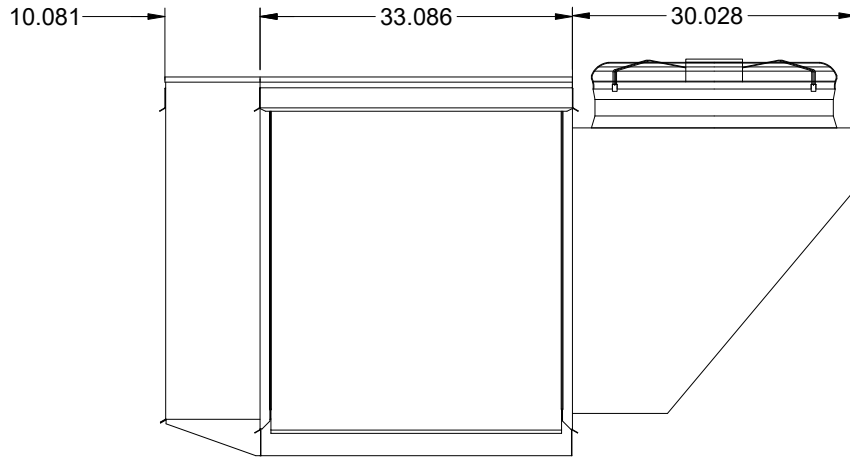


Notes - Elevation View
 Standard configuration for unit access is on the right-hand side, when looking into the unit intake in the direction of airflow.
 Order of unit sections is from intake of unit to discharge of unit.
 Sections included on this unit: Weatherhood Section, Cooling Section, Blower Section
 Insulation: Double Wall, from Cooling Section through end of unit.



Notes - Plan View
 Standard configuration for unit access is on the right-hand side, when looking into the unit intake in the direction of airflow.

END VIEW

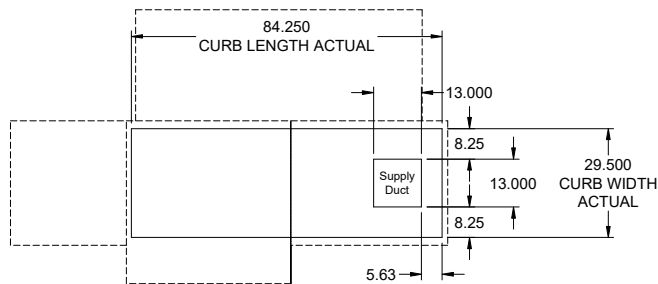


FOOTPRINT VIEW

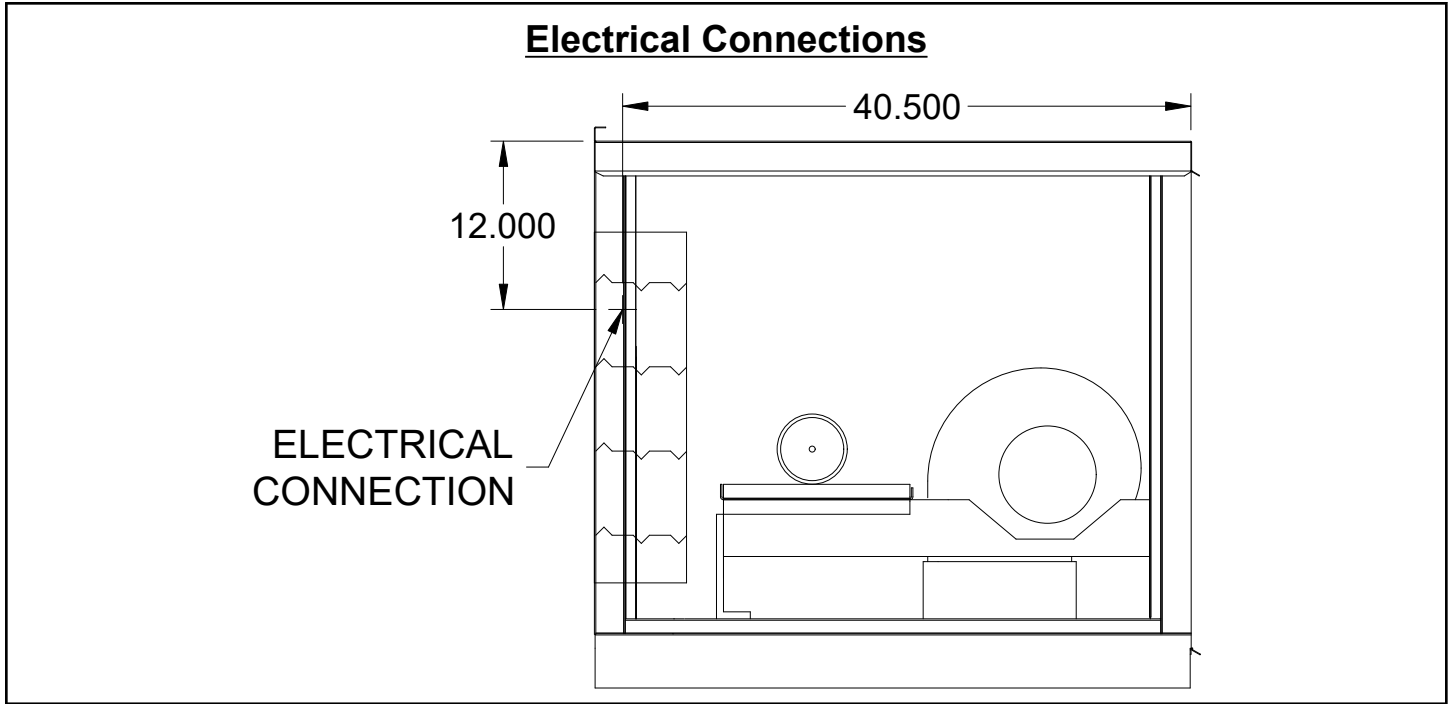
NOTE: Roof Opening Requirements:

Minimum Roof Opening: The minimum roof opening size is the illustrated duct diameter plus 0.25 in. on all sides.
 For example: If the duct size is 14 x 14 in. square, the minimum roof opening size is 14.5 x 14.5 in. square.

Maximum Roof Opening: There must be a minimum perimeter of 1.75 in. between the roof opening and the roof curb.
 For example: If the roof curb is 75 x 30 in. square, the maximum roof opening is 71.5 x 26.5 in. inches square.



NOTE: The weatherhood and filter sections of the make-up air unit extend beyond the curb. This is by design, to prevent water infiltration.



EQUIPMENT SCHEDULE										
Tempered Make-Up Air Unit								Mark: Ksf-1		
Qty	Accurex Model	Volume	External SP	Total SP	FRPM	Operating Power	Weight			
1	XMSX-109-H12-4	1,080 CFM	0.34 in. wg	0.4 in. wg	738	0.17 hp	1,189 lb			
Motor Information										
Size	V/C/P	Enclosure	Motor with Shaft Grounding	Motor RPM	Windings	MCA		MOP		
1/3 hp	208/60/3	ODP	No	1725	1	22.2		35		
Cooling										
Cooling Type	Coil Model		Rows Deep	Fins Per Inch	Face Velocity	Total Energy	Sensible Energy	Leaving Dry Bulb	Leaving Wet Bulb	
Packaged DX	DX38S01S10-30x30		1	10	173 ft/min	47.6 MBH	20.5 MBH	76.2 F	71.5 F	
Coil SP	Refrigerant	Suction Temp	Liquid Temp	Super Heat	Code 18/19			Suction Conn Qty / Size	Liquid Conn Qty / Size	
NA	R-410a	39.9 F	110 F	8 F	0			NA	NA	
Outlet Sound Power By Octave Band								LwA	dBA	Sones
62.5	125	250	500	1000	2000	4000	8000			
84.2	82.1	69.4	61.5	58.5	55.8	52.1	44.1	69.4	58.4	8.2
<ul style="list-style-type: none"> LwA - A weighted sound power level based on ANSI S1.4 dBA - A weighted sound pressure level base on 11.1 dB attenuation per octave band at 5.0 ft. Noise Criteria (NC) based on an average attenuation of 11.5 dB per octave band at 5.0 ft. 										
OPTIONS AND ACCESSORIES										
Air Flow Arrangement: Outdoor Air Only Weatherhood: Aluminum Mesh, 16x20x2 - (4) Damper: Inlet Outdoor Air Intake Position: End Discharge Position: Bottom Coating: Galvanized Cooling Coil Coating - None Insulation: Double Wall - Tempering On Access Side: Right-Hand Control Center Cool Inlet Air Sensor Unit Controls: Terminal Strip Temperature Control: None Terminal Strip Unit Warranty: 1 Yr (Standard)										

Clearance Specifications

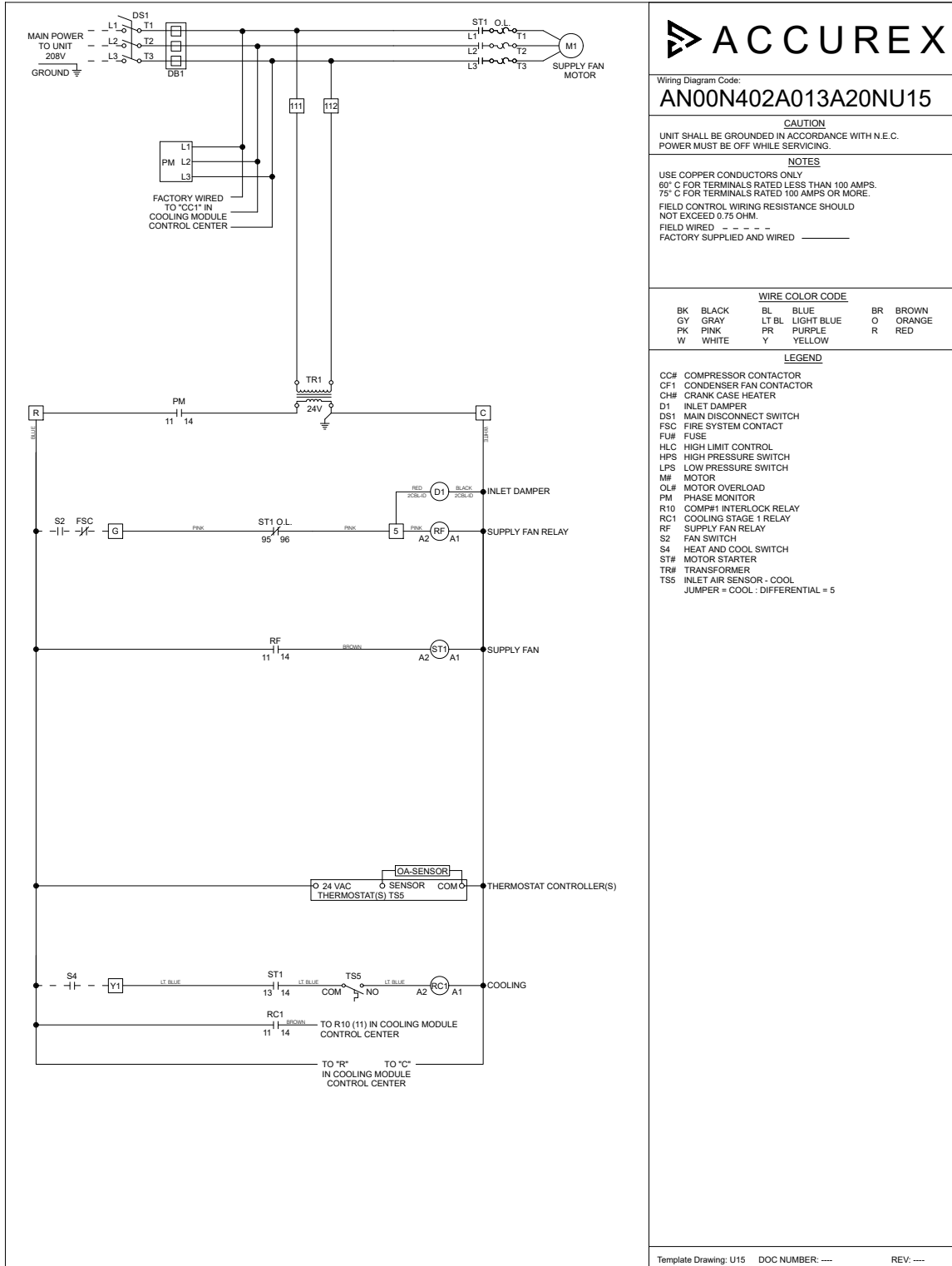
Recommended Minimum Combustible Clearances				
	Floor (in.)	Top (in.)	Sides (in.)	Ends (in.)
Insulated Units	0	0	0	0
Non-Insulated Units	0	6	6	6

Notes - Combustible Clearances
 Clearance to combustibles is defined as the minimum distance required between the heating source and the adjacent combustible surfaces to ensure the adjacent surface's temperature does not exceed 90 F above the ambient temperature.

Recommended Minimum Service Clearances	
Housing 32 and less (in.)	Housing 35 and higher (in.)
42 on the controls side of the unit	48 on the controls side of the unit

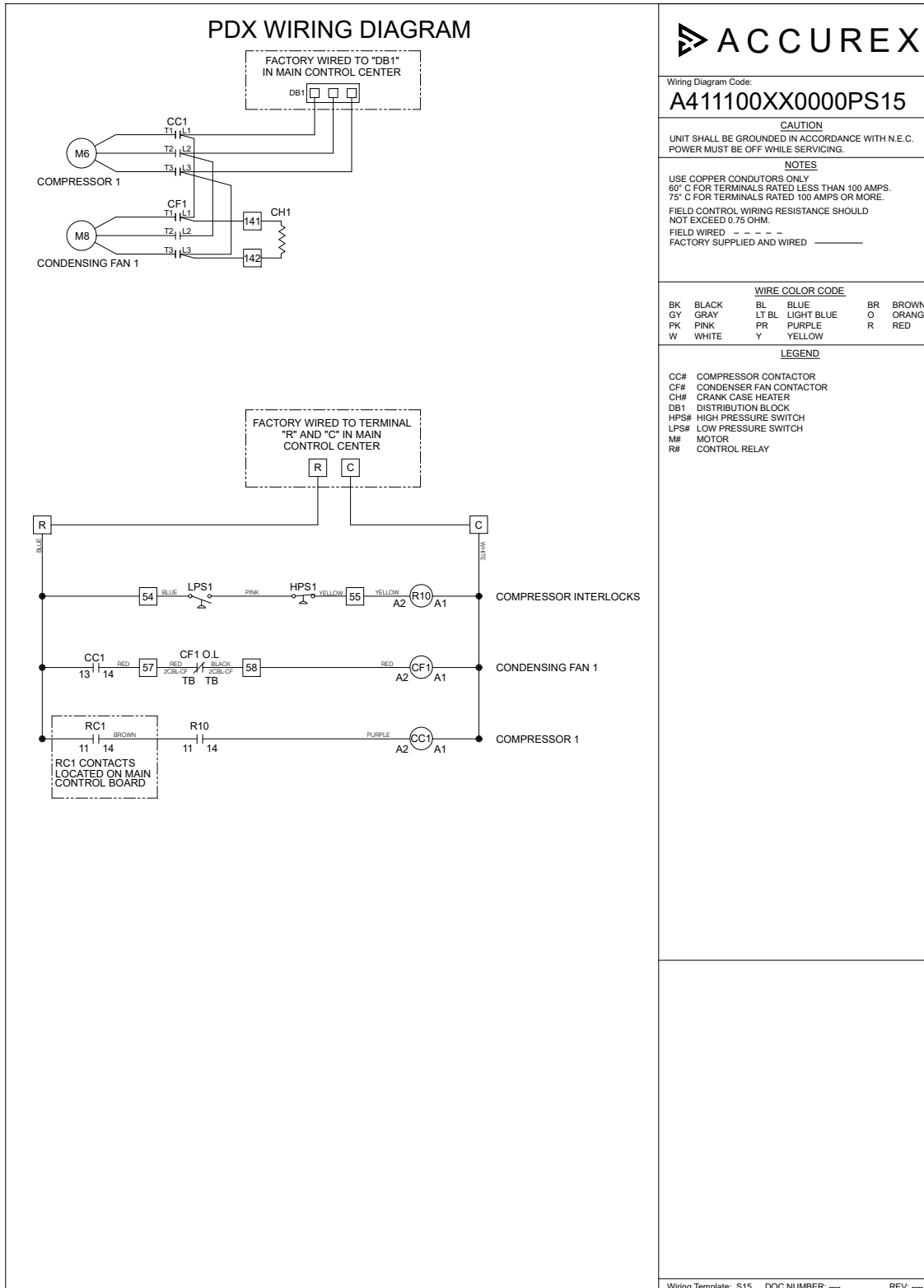
Notes - Service Clearances
 To ensure ample space for component removal (evaporative cooling media, coils, filters, etc.), service clearances should be 6 in. wider than the width of the module itself.
 Reference the PDX Service Clearance guidelines (PDX IOM)

Wiring Diagram



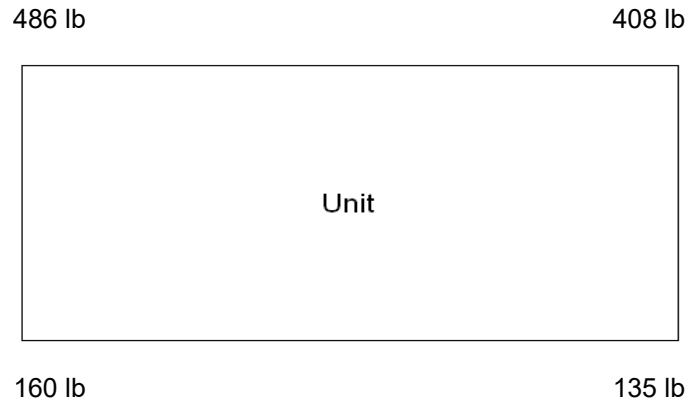
Manufacturer reserves the right to change, modify, or improve this product at anytime





Manufacturer reserves right to change, alter, or improve this product at any time.

Corner Weights



SEQUENCE OF OPERATIONS

Unit Controls

The unit shall be provided from the factory with:

- 24VAC Transformer
- Terminal Strip
- Factory mounted and wired outdoor air inlet damper with actuator
- Phase Monitor

Field Provided Control Requirements

The following field provided control signals must be provided for proper operation of the unit (Reference the unit wiring diagram for additional information):

- Supply fan enable – Contact closure between R and G (24VAC)
- Cooling enable – Contact closure between R and Y1 (24VAC) *Factory installed jumper allows heating to be enabled automatically by outside air temperature - remove jumper for field provided control.

Unit Start-Up Sequence

- Supply Fan Enable Is Received
- Outdoor air inlet damper actuator is energized
- Supply Fan Is Enabled

Cooling Control

A cooling enable signal must be present and the supply fan must be enabled before the unit will enable cooling.

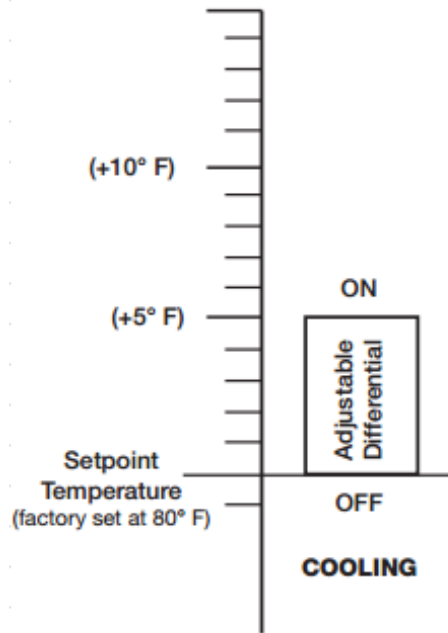
Cooling Inlet Air Sensor (Cooling Lockout)

The cooling will be locked out when the outside air temperature is below the cooling inlet air sensor set point (typical 80 F, adj.)

Packaged DX Cooling

The packaged DX cooling system is provided with a single standard scroll compressor. Cooling is staged on and off based upon the outside air temperature:

- Stage 1 is enabled at 85 F (adj.)
- Stage 1 is disabled at 80 F (adj.)



Warranty Statement for Make-Up Air

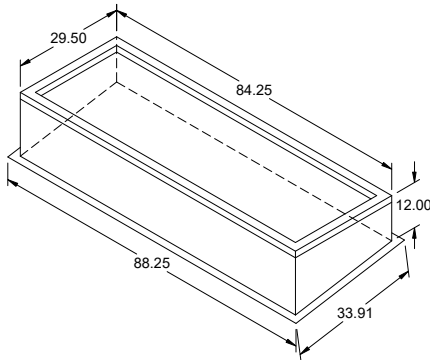
Unit Warranty

Accurex warrants the equipment to be free from defects in material and workmanship for a period of 1 year (standard) from the shipment date.

Warranty Notes

Any component which proves defective during the warranty period will be repaired or replaced at Accurex's sole option when returned to our factory, transportation prepaid. All warranties do not include labor costs associated with troubleshooting, removal, or installation. Accurex will not be liable for any consequential, punitive, or incidental damages resulting from use, repair, or operation of any Accurex product. These warranties are exclusive and are in lieu of all other warranties, whether written, oral, or implied, including the warranty of merchantability and the warranty of fitness for a particular purpose. No person (including any agent or salesperson) has authority to expand Seller's obligation beyond the terms of this warranty, or to state that the performance of the product is other than that published by Seller.

As a result of our commitment to continuous improvement, Accurex reserves the right to change specifications without notice.



Model: GPIP

Pitched Roof Curb

Standard Construction Features:

- Roof Curb fits between the building roof and the fan mounted directly to the roof support structure - Constructed of either 18 ga galvanized steel or 0.064 in. aluminum - Designed for pitched roofs - Straight sided without a cant - Wood nailer for attachment of roof flashing material - 2 in. mounting flange - 1 in. thick 3 lb density insulation - Height - Available from 12 in. to 24 in. as specified in 0.5 in. increments. Notes: - The maximum roof opening dimension should not be greater than the "Actual" top outside dimension minus 2 in.. - The minimum roof opening dimension should be at least 2.5 in. more than the damper dimension or recommended duct size. - The Roof Opening Dimension may or may not be the same as the Structural Opening Dimension.

General

Tag	Qty	Model	Sizing Method	Undersizing (in.)	Pitch (in.)	Pitch Run	Weight (lb)	Shipped Assembled	Union Label
	1	GPIP-31 x 85.75	Nominal	1.5	2	Short Side	77	Yes	No Preference

Dimensions

Curb Height (in.)	Nominal Outside Width (in.)	Nominal Outside Length (in.)	Actual Outside Width (in.)	Actual Outside Length (in.)	Flange Width (in.)	Flange Length (in.)	
12	31	85.75	29.5	84.25	33.5	34	33.91

Accessories

Material	Security Bars	Liner	Insulation (in.)	Insulation R Value
Galvanized	No	No	1	R4.3