

**ADDENDUM NO. 1**

IRONDALE FIRE STATION No. 3

-----  
THIS ADDENDUM IS DIRECTED TO ALL PRIME BIDDERS, AND ALL OTHERS TO WHOM DRAWINGS AND SPECIFICATIONS HAVE BEEN ISSUED.

THIS ADDENDUM FORMS A PART OF THE CONTRACT DOCUMENTS. THE FOLLOWING CONDITIONS TAKE PRECEDENCE OVER ANY CONFLICTING CONDITIONS IN THE DRAWINGS AND SPECIFICATIONS. THE DRAWINGS AND SPECIFICATIONS ARE HEREBY AMENDED IN THE FOLLOWING PARTICULARS.  
-----

**GENERAL**

1. See attached RFI no. 1 from Stewart Perry.

**DRAWINGS**

1. P0.1 Plumbing Schedules and Notes:
  - a. Clarified electrical information for water heaters WH-1, WH-2 and WH-3.
  - b. Addition of compressed air specification.
  - c. Clarified power requirements for AC-1 of Plumbing Fixture Schedule
2. P0.2 Plumbing Details: updated water heater detail
3. P1.1 Non-pressure Piping – Floor Plan: Adjustment of mechanical floor drain and water heaters location in Mech/ Elec 139.
4. P2.1 Pressure Piping – Floor Plan: Adjustment of mechanical floor drain, water heaters, and air compressor location in Mech/ Elec 139
5. P3.1 Plumbing Enlarged Plans: Adjustment of mechanical floor drain, water heaters, and air compressor location in Mech/ Elec 139
6. M1.1 Mechanical Floor Plan: Added label for IHP-2-1

**SPECIFICATIONS**

1. 08 43 13 Aluminum Framed Storefronts. Under 2.3 Components, changed the cross-section to 2-inch by 4-1/2-inch nominal dimension.

**END OF ADDENDUM NO. 1**



# Request For Information



Project: Irondale Fire Station # 4  
Address: 2101 John Rogers Drive  
Location: Irondale, AL 35210  
Job #: \_\_\_\_\_

RFI: 001  
Date: 2/4/2025

**TO ARCHITECT:** Ross McCain  
Charles Williams and Associates  
(205) 250-0700  
[Ross@cwiliams-arch.com](mailto:Ross@cwiliams-arch.com)

**FROM:** Christy Moore  
Stewart Perry  
(205) 414-6217

**CONS. MANAGER:** [Kgarrett@kempMS.net](mailto:Kgarrett@kempMS.net)

**RFI DESCRIPTION:** Civil

**DRAWING/SPECS:** C1.0, C2.1

1. We are requesting Civil Cad Files for this project.
  2. Brick Pavers. The Brick Pavers at the Plaza Area shown on Site Plan C1, do not match the details provided on L5. Which is correct?
  3. No detail has been provided showing aggregate base under the sidewalks.  
Please confirm no aggregate vbase is required under the sidewalks.
  4. Stormwater: The Outlet Control Structure, D2, does not appear to have a detail.
  5. Stormwater: The Vertical Headwall does not appear to be correctly drawn.  
The sides should be more winged out so the slope can wrap around it. Please advise.
- \_\_\_\_\_  
Please review and advise. Thanks.  
\_\_\_\_\_  
\_\_\_\_\_  
\_\_\_\_\_

**REQUESTED BY:**  
Contact: \_\_\_\_\_  
Company: \_\_\_\_\_

**Respond By:** 2/6/2025

- RFI RESPONSE:**
1. Please contact Curtis Walker, [cwalker@kadre-eng.com](mailto:cwalker@kadre-eng.com), for civil CAD files.
  2. Follow the landscape drawings for the brick paver details.
  3. No aggregate base is required under the sidewalks.
  4. See C5.1 for outlet control structure D2 detail.
  5. Civil engineer to provide a detail, which will be issued in a later addendum.

**ANSWERED BY:**  
Contact: \_\_\_\_\_  
Company: \_\_\_\_\_

**Response Date:** \_\_\_\_\_

GENERAL NOTES NOTES:

1. ALL DUCT WORK AND EQUIPMENT SHALL BE LOCATED BETWEEN THE CEILING AND BOTTOM OF THE TRUSSES UNLESS OTHERWISE SHOWN.

SHELTER OSA CALCULATIONS									
Room	Room Type	Rp	Pz	Ra	Az	Vbz	Ez	Voz	
cfm	People	cfm/ft <sup>2</sup>	cfm/ft <sup>2</sup>	ft <sup>2</sup>	ft <sup>2</sup>	cfm	cfm	cfm	
AUX ROOM (STORM SHELTER) 141	Conference / Meeting	5	50	0.00	267	250	1.00	250	
TLT 142	Restroom	5	0	0.00	57	0	1.00	0	
JAN 143	Janitor's Closet	5	0	0.00	54	0	1.00	0	
Total Required by SF-1:									250
Total Provided by SF-1:									250

SIGNAGE FOR EMERGENCY VENTILATION FAN SWITCHES (REFER TO ARCHITECTURAL SIGNAGE SPECIFICATION FOR SIGN AND TEXT COLOR AND SIZE) (COORDINATE EXACT LOCATION WITH ARCHITECT).

EMERGENCY VENTILATION FANS TO BE SWITCHED ON UPON A LOSS OF POWER IN THE SHELTER DURING A STORM EVENT.

ALL INTERIOR DOORS TO ROOMS IN SHELTER ARE TO BE OPENED IF EMERGENCY VENTILATION FANS ARE ON.

EMERGENCY VENTILATION FANS ARE TO BE SWITCHED OFF UPON POWER RESTORED.

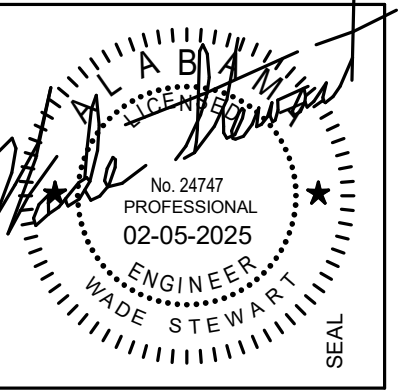
- KEYED NOTES:
- HIGH IMPACT LOUVERS AND WEATHER LOUVERS. HIGH IMPACT LOUVERS SHALL MEET IMPACT TESTING CRITERIA FOR TORNADO SHELTERS IN ICC 500/FEMA 361. LOUVER TO BE RUSKIN XP500S-415 OR EQUAL. SEE DETAIL. WEATHER LOUVER SHALL BE INSTALLED ON EXTERIOR WALL WITH HIGH IMPACT LOUVER INSTALLED BEHIND WEATHER LOUVER. (EXTERIOR WALL APPLICATION ONLY).
  - NORMALLY CLOSED AUTO DAMPER TO REMAIN CLOSED WHEN POWERED CONTINUOUSLY. UPON THE LOSS OF POWER OR DE-ACTIVATION BY WALL SWITCH DURING STORM EVENT, THE DAMPERS SHALL OPEN. DAMPER TO RETURN TO NORMAL POSITION ONCE SWITCH IS DEACTIVATED OR POWER IS RESTORED.
  - WALL SWITCHES FOR SF-1 AND ALL ASSOCIATED AUTO DAMPERS TO BE ACTIVATED UPON THE LOSS OF POWER DURING A STORM EVENT. UPON THE ACTIVATION OF EITHER SWITCH, PROVIDE SIGNAGE OUTSIDE OF JANITOR 143, "EMERGENCY VENTILATION FAN SWITCHES" FOR SF-1. EF-1 AND EF-2 SHALL BE ON EMERGENCY POWER.
  - 4" DRYER EXHAUST UP TO GOOSENECK ON ROOF.
  - RESIDENTIAL STYLE KITCHEN HOOD WITH BUILT IN FAN. 800 CFM EXHAUST. PROVIDED BY OTHERS.
  - 10" EXHAUST DUCT UP TO GOOSENECK ON ROOF.
  - 4" COMBUSTION AIR INTAKE THRU EXTERIOR WALL TO MANUFACTURER'S APPROVED CAP WITH BIRDSCREEN. PROVIDE MATERIALS AND INSTALLATION PER MANUFACTURER.
  - 6" FLUE VENT UP THRU ROOF TO MANUFACTURER'S APPROVED CAP. PROVIDE MATERIALS AND INSTALLATION PER MANUFACTURER.
  - 6" EXHAUST DUCT UP TO GOOSENECK ON ROOF.
  - PROVIDE REMOTE CABLE OPERATED DAMPER IN CEILING FOR DAMPER OPERATION.
  - DRYER BOOSTER EXHAUST FAN ALARM PANEL AND SIGN LOCATION (SEE EXHAUST FAN SCHEDULE FOR SIGNAGE, COORDINATE EXACT LOCATION WITH ARCHITECT).
  - PROVIDE GUARDIAN G300B WET CHEMICAL EXTINGUISHER UNIT COMPLETE WITH ENCLOSURE, EXTINGUISHER ASSEMBLY, DISTRIBUTION ASSEMBLY, AND ELECTRIC SHUT-OFF. SYSTEM SHALL BE CONNECTED TO BUILDING FIRE ALARM SYSTEM. INSTALL IN CABINET ABOVE RANGE.
  - MAGNEGRIP TO BE THE BASIS OF DESIGN FOR THE VEHICLE EXHAUST RAIL SYSTEM EQUIPMENT. ALL VEHICLE EXHAUST RAIL SYSTEM EQUIPMENT AND DUCTWORK TO BE SUPPLIED AND INSTALLED BY MAGNEGRIP. ALL ELECTRICAL WORK SHALL FALL UNDER THE SCOPE OF THE PROJECT ELECTRICIAN. ALL WALL OR ROOF PENETRATIONS AND SEALINGS ARE AT THE CUSTOMERS OR CONTRACTOR'S EXPENSE AND NOT THE RESPONSIBILITY OF MAGNEGRIP. CONTACT DAVID SAPP AT MAGNEGRIP FOR PRICING. DSAPP@MAGNEGRIP.COM, 800-875-5440.
  - APPROX. 12" ROUND FROM MAGNEGRIP CF363-5 THRU EXTERIOR WALL TO EXHAUST STACK. MAGNEGRIP IS NOT RESPONSIBLE FOR WALL PENETRATION OR SEALING. WALL PENETRATIONS AND SEALINGS TO BE DONE BY GENERAL CONTRACTOR.
  - EXHAUST RAIL W/ TAILPIPE HOSE DROP. RAIL SHALL EXTEND LENGTH OF BAY. EACH HOSE SHALL BE SIZED FOR APPROXIMATELY 600 CFM.
  - APPROX. 8" ROUND DROP TO EXHAUST RAIL. ALL DUCT SIZES AND LOCATIONS FOR VEHICLE EXHAUST SYSTEM ARE APPROXIMATE.
  - VEHICLE EXHAUST FAN, BASIS OF DESIGN MAGNEGRIP CF363-5, APPROX. 3300 CFM.
  - APPROX. LOCATION OF VEHICLE EXHAUST SYSTEM CONTROL PANEL. PANEL WILL REQUIRE A DEDICATED 208/360 CIRCUIT.
  - EMERGENCY SHUT-OFF BUTTON FOR VEHICLE EXHAUST FAN (MAGNEGRIP CF363-5) TO BE PROVIDED BY THE CONTROL'S CONTRACTOR.
  - DUCT TO BE ROUTED UP AND OVER VAULTED CEILING IN EXERCISE ROOM AND IN TRUSS WEBBING.

**Dewberry**

2 Riverchase Office Plaza  
Suite 205  
Hoover, AL 35244  
(205) 988-2069  
www.dewberry.com

Project Number :  
5017142

Revisions		
No.	Date	Description
1	2/5/2025	Revision 1



100% CDS

**IRONDALE FIRE STATION #3**  
INT. OF JOHN ROGERS DRIVE & ALTON ROAD  
Birmingham, Alabama  
CITY OF IRONDALE

CHARLES WILLIAMS & ASSOCIATES ARCHITECTS  
3601 8TH AVE. SOUTH BIRMINGHAM, ALABAMA 35222  
PH: 205-250-0700 FAX: 205-250-0515

SHEET TITLE:  
**MECHANICAL - FLOOR PLAN**

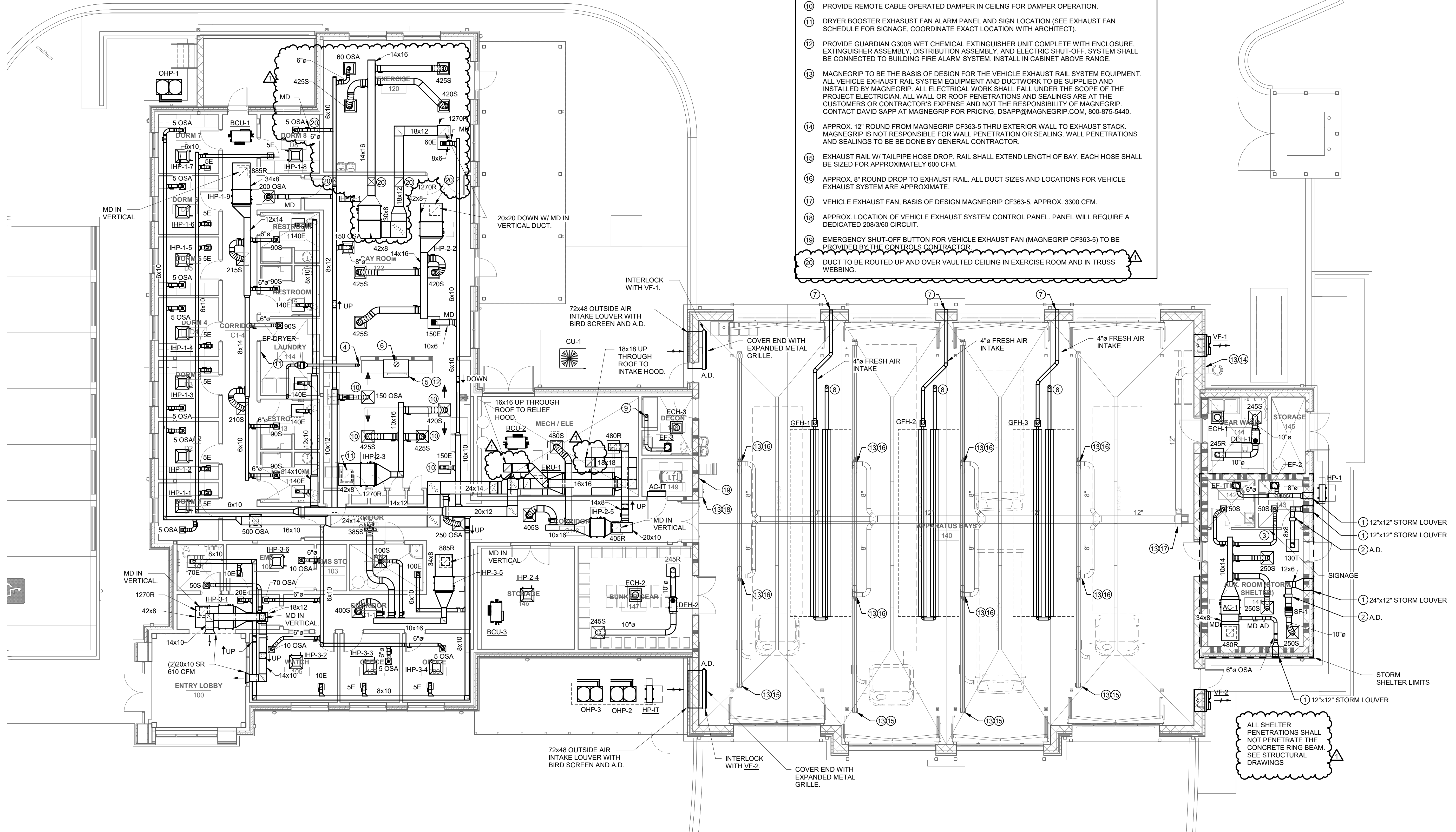
PROJECT NUMBER:  
CWA No. 2023-01

DATE:  
08.30.24

DRAWN BY:  
LWH

CHECKED BY:  
JWS

SHEET NUMBER  
**M1.1**



1 MECHANICAL - FLOOR PLAN  
M1.1 1/8" = 1'-0"



**GENERAL NOTES**

- LOCATIONS OF UTILITIES SHOWN ON PLANS ARE APPROXIMATE. VERIFY WITH LOCAL UTILITY PRIOR TO BIDDING.
- CONTRACTOR SHALL VERIFY EXACT LOCATION, SIZE, AND ELEVATION OF ALL EXISTING SERVICES PRIOR TO INSTALLING ANY NEW PIPE.
- ALL OUTSIDE CLEANOUTS SHALL BE BROUGHT TO GRADE AND EMBEDDED IN 18"x18"x16" THICK CONCRETE PAD. (J.R. SMITH 4258 OR EQUAL.)
- WHEREVER DISSIMILAR METALS ARE CONNECTED ON WATER LINES, A DIELECTRIC UNION SHALL BE USED.
- ALL HORIZONTAL WATER AND VENT PIPING SHALL BE RUN ABOVE CEILING ON PLAN WHERE SHOWN UNLESS OTHERWISE NOTED.
- ALL HORIZONTAL SANITARY PIPING IS RUN BELOW FLOOR ON PLAN WHERE SHOWN UNLESS OTHERWISE NOTED.
- ALL WATER PIPING BELOW SLAB ON GRADE SHALL BE BENT UP AT ENDS SO THAT NO JOINTS OCCUR BELOW FLOOR.
- ALL WATER PIPING INSTALLED IN EXTERIOR WALLS SHALL BE LOCATED ON THE INTERIOR SIDE OF THE EXTERIOR WALL INSULATION.
- NO VENT THRU ROOF IS TO BE LOCATED WITHIN 10 FEET OF ANY BUILDING AIR INTAKES, PER CODE. COORDINATE WITH MECHANICAL AND GENERAL CONTRACTORS.
- DOMESTIC WATER PIPING AND FIRE PROTECTION PIPING LOCATED ABOVE THE CEILING, SHALL BE INSTALLED BELOW CEILING INSULATION.
- CONTRACTOR SHALL COORDINATE ALL SINKS WITH CASEWORK PRIOR TO ORDERING SINKS.
- PROVIDE DISINFECTION OF WATER PIPING SYSTEM WITH CHLORINE SOLUTION AS PER CODE.
- INSTALLATION OF BACKFLOW PREVENTER SHALL COMPLY WITH CURRENT INTERNATIONAL BUILDING CODE AND CURRENT INTERNATIONAL PLUMBING CODE.
- ALL OVERHEAD WATER PIPING TO BE RUN BELOW INSULATION AT BOTTOM OF TRUSSES FOR FREEZE PROTECTION.
- INSULATION ON ALL PIPING SHALL MEET SMOKE/ FLAME RATING OF 25 & 50.
- NO JOINTS IN WATER PIPING BELOW SLAB.
- THE LOCATION OF LAVATORIES AND WATER CLOSETS RELATIVE TO THE FINISHED WALL IS CRITICAL. REFER TO ARCHITECTURAL AND THE SPECIFICATIONS FOR ADDITIONAL INFORMATION. ALL WATER CLOSETS TO BE 18" FROM FINISH WALL TO CENTER OF WATER CLOSET.
- WATER HAMMER ARRESTORS ARE REQUIRED TO PROTECT WATER PIPING SYSTEMS WHERE QUICK-CLOSING VALVES ARE UTILIZED. WATER HAMMER ARRESTORS SHALL CONFORM TO ASSE 1010.
- THESE DRAWINGS NOT INTENDED TO SHOW ALL POSSIBLE CONDITIONS. IT IS INTENDED THAT A COMPLETE PLUMBING SYSTEM BE PROVIDED WITH ALL NECESSARY EQUIPMENT, APPURTENANCES AND CONTROLS, COMPLETELY COORDINATED WITH ALL DISCIPLINES. ALL PARAMETERS GIVEN IN THESE DOCUMENTS SHALL BE STRICTLY CONFORMED WITH ANY ITEMS AND LABOR REQUIRED FOR A COMPLETE PLUMBING SYSTEM IN ACCORDANCE WITH ALL APPLICABLE CODES, STANDARDS AND THESE CONTRACT DOCUMENTS SHALL BE FURNISHED WITHOUT INCURRING ANY ADDITIONAL COST TO THE PROJECT. CAREFULLY REVIEW ALL CONTRACT DOCUMENTS AND THE DESIGN OF OTHER TRADES BEFORE PREPARING SHOP DRAWINGS.
- COORDINATE PLUMBING PIPING WITH STRUCTURAL, PLUMBING, HVAC, AND ELECTRICAL. MAKE OFFSETS AND TRANSITIONS TO COORDINATE WITH OTHER TRADES WITHOUT ANY ADDITIONAL COST TO THE PROJECT.
- COORDINATE ALL PLUMBING IN SLAB WITH BUILDING FOOTINGS.
- NO PIPING TO BE RUN ABOVE ELECTRICAL PANELS. MAINTAIN ALL REQUIRED CLEARANCES.
- CONTRACTOR SHALL VISIT JOB SITE AND VERIFY EXISTING CONDITIONS BEFORE SUBMITTING A PRICE, ORDERING MATERIALS OR PERFORMING ANY WORK. NOTIFY THE ARCHITECT OF ANY DEVIATION FROM PLUMBING PLAN.
- SUPPORT PIPE AS REQUIRED BY THE CURRENT INTERNATIONAL PLUMBING CODE.
- FIRESTOP ALL RATED WALL AND FLOOR PENETRATIONS. SEE ARCHITECTURAL DRAWINGS FOR RATED WALL AND FLOOR LOCATIONS.
- OFFSET ALL VTR'S TO BACKSIDE OF ROOF RIDGE.
- DO NOT BEGIN WORK UNTIL ELEVATION OF FINAL CONNECTION POINT IS VERIFIED AND GRADING OF ENTIRE SYSTEM CAN BE DETERMINED (EVEN IF FINAL CONNECTION IS SPECIFIED UNDER ANOTHER SECTION).

**PLUMBING LEGEND**

---	DOMESTIC COLD WATER	BFF	BELOW FINISHED FLOOR
---	DOMESTIC HOT WATER SUPPLY	≡	CAP ON END OF PIPE
---	DOMESTIC HOT WATER RETURN	TYP	TYPICAL
---	SOIL, WASTE, OR SANITARY SEWER	CO	CLEANOUT
---	VENT	FD	FLOOR DRAIN
A	COMPRESSED AIR	DN	DOWN
G	NATURAL GAS	P-#	PLUMBING FIXTURE
S	STORM PIPING	VSTR	VENT STACK
OIL	OIL WASTE PIPING	VSTR	VENT THROUGH ROOF
PI	PARTICLE INTERCEPTOR PIPING	⊕	BALL VALVE
⊕	PIPE TURNING DOWN	MFD	MECHANICAL FLOOR DRAIN
⊕	PIPE TURNING UP	WS	WASTE STACK
⊕	TEE DOWN	HWR	HOT WATER RETURN
⊕	TEE UP	HW	HOT WATER
CW	COLD WATER	ABV	ABOVE
WH - #	WATER HEATER	AFB	ABOVE FINISHED FLOOR
PI	PARTICLE INTERCEPTOR PIPING		

COMPRESSED AIR SPECIFICATION:  
COMPRESSED AIR PIPING SYSTEM TO BE TRANSAIR, ALUMINUM PIPE, FITTINGS AND VALVES. SUPPORT IN ACCORDANCE WITH MANUFACTURER'S REQUIREMENTS. PIPING SYSTEM TO BE DRAINED DOWN TO LOWPOINTS. REFERENCE DESIGN.

**PLUMBING FIXTURE SCHEDULE**

MARK	FIXTURE	WASTE	CW	HW	REMARKS
AC-1	AIR COMPRESSOR				INGERSOLL RAND PREMIUM SIMPLEX PACKAGE 2475 BARE, 80-GAL TANK, 175 PSIG, AS&S, 5 HP RECIP COMPRESSOR. PROVIDE WITH DRYER, CONDENSER, WATER SEPARATOR, FA75IG GENERAL PURPOSE FILTER AND FA75IH HIGH EFFICIENCY FILTER WITH AUTODRAIN. COORDINATE WITH ELECTRICAL UNIT SHALL BE 208/3.
CB	DRAIN BOX	2"	-	-	PROVIDE A SIOUX CHIEF MODEL #696-3F DRAIN BOX, #696-LC LOUVERED COVER, #696-CF SECONDARY DRAINAGE FUNNEL, AND J.R. SMITH TRAP SEAL INSERT. BOX TO COME COMPLETE WITH WALL FLANGE AND LOUVER. PIPE INDIRECT IN WALL TO DRAIN BOX. COORDINATE EXACT LOCATION WITH ARCHITECT AND GC.
FD	FLOOR DRAIN	3"	-	-	J.R. SMITH #2010 WITH 6" ROUND NICKEL BRONZE GRATE. PROVIDE WITH J.R. SMITH TRAP INSERT.
FS-1	FLOOR SINK	4"	-	-	J.R. SMITH #3100, 8" SQUARE, PORCELAIN ENAMELED CAST IRON INTERIOR WITH 3/4 CAST IRON PORCELAIN ENAMELED GRATE AND DOME BOTTOM STRAINERS. PROVIDE WITH J.R. SMITH TRAP INSERT.
FS-2	FLOOR SINK	4"	-	-	J.R. SMITH #3200, 16" SQUARE, PORCELAIN ENAMELED CAST IRON INTERIOR WITH 3/4 CAST IRON PORCELAIN ENAMELED GRATE AND DOME BOTTOM STRAINERS. PROVIDE WITH J.R. SMITH TRAP INSERT.
GT-1	GREASE TRAP	4"	-	-	ZURN GMC-OMC-SMC50-300
HB	HOSE BIBB	-	3/4"	-	WOODFORD B-24 SERIES, ANTI-SIPHON VACUUM BREAKER CLOSE COUPLED, POLISHED CHROME. INSTALL PER MANUFACTURER'S RECOMMENDATIONS. SUPPORT PIPING AND HOSE BIBB WITH UNI-STRUT MOUNTED TO THE STRUCTURE.
HR-A	HOSE REEL - AIR	-	-	-	REELCRAFT MODEL #7850 OLP COMPLETE WITH 50 FEET OF HOSE, MAXIMUM OPERATING PRESSURE OF 300 PSI. INSTALL PER MANUFACTURER'S INSTRUCTIONS. COORDINATE LOCATION AND MOUNTING HEIGHT WITH GENERAL CONTRACTOR.
HR-W	HOSE REEL - WATER	-	2"	-	CROKER 5000 SERIES ANGLE HOSE VALVE. VALVE SHALL BE COMPATIBLE WITH OWNERS EQUIPMENT.
MFD	MECHANICAL FLOOR DRAIN	4"	-	-	J.R. SMITH #2242 WITH SEDIMENT BUCKET. PROVIDE WITH J.R. SMITH TRAP INSERT.
OS-1	OIL/WATER SEPARATOR	4"	2"	-	J.R. SMITH #5599-50-100 COMPLETE WITH ANCHOR FLANGE. INSTALLATION SHALL COMPLY WITH REQUIREMENTS OF AUTHORITY HAVING JURISDICTION. PROVIDE 12" EXTENSION IF REQUIRED FOR INSTALLATION. PROVIDE CLEAN-OUT ACCESS. PROVIDE HIGH LEVEL SENSOR AND CONTROL PANEL.
P-1	WATER CLOSET - ADA COMPLIANT	4"	1"	-	FLOOR MOUNTED - KOHLER K-9657-SS-0 COMPLETE SLOAN ROYAL #111 FLUSH VALVE WITH YJ BRACKET AND CHURCH "DURA GUARD" MODEL # 2155 SSC SEAT.
P-2	LAVATORY - ADA COMPLIANT	1 1/4"	1/2"	1/2"	WALL HUNG - KOHLER K-2032 (20" X 18") COMPLETE, SYMMONS S-20-S FAUCET, K7715 OUTLET WITH TAILPIECE. J.R. SMITH #700-M31-Z FIXTURE SUPPORT, MCGUIRE #165 SUPPLIES WITH STOPS AND MCGUIRE #8872 P-TRAP. INSULATE P-TRAP, STOPS AND SUPPLIES WITH "PRO-WRAP" BY MCGUIRE. MOUNT WITH RIM MAXIMUM 34" AFF. PROVIDE LAWLER 570 THERMOSTATIC MIXING VALVE MOUNTED BELOW LAVATORY. RUN 100" F WATER TO FAUCET. MUST MEET A.D.A. GUIDELINES.
P-3	LAVATORY	1 1/4"	1/2"	1/2"	COUNTERTOP - KOHLER K-2196-4 COMPLETE, SYMMONS S-20-S FAUCET, MCGUIRE #8872 P-TRAP. MCGUIRE 165 SUPPLIES WITH STOPS. INSULATE ALL WITH "PRO-WRAP" BY MCGUIRE. PROVIDE LAWLER 570 MIXING VALVE MOUNTED BELOW LAVATORY UNLESS OTHERWISE NOTED ON THE DRAWINGS.
P-4	SHOWER VALVE - ADA COMPLIANT	-	1/2"	1/2"	CHICAGO FAUCET 1807-CP THERMOSTATIC PRESSURE BALANCING SHOWER VALVE, 151-ACP HAND SHOWER AND GRAB BAR, 763-CP DIVERTER VALVE, FIXED SHOWER HEAD, WITH BLADE HANDLE, AND TRIM. ADJUST FOR 109°F MAXIMUM TEMP. PROVIDE BACK PLATE.
P-5	DOUBLE BOWL SINK	1 1/2"	1/2"	1/2"	ELKAY LRAD-3321, LK-35 STRAINERS, SYMMONS S-23-3 FAUCET. MCGUIRE #8912 P-TRAP. CONTINUOUS WASTE OUTLET, AND #165 STOPS WITH SUPPLIES.
P-6	WASHING MACHINE BOX (COMMERCIAL)	1 1/2"	1/2"	1/2"	FURNISH AND SET IN PLACE UNDER ANOTHER SECTION. ROUGH AND CONNECT COMPLETE. PROVIDE BALL VALVE CUT OFF ON HOT AND COLD WATER SUPPLY INSTALL ABOVE CEILING A LINE SIZE RP2BP WITH STRAINER ON INLET SIDE OF BACKFLOW PREVENTER AND SHOCK ARRESTOR PDI SIZE "B" ON THE OUTLET SIDE. PIPE BACKFLOW PREVENTER WASTE THRU FACTORY MADE AIR GAP DOWN IN WALL TO TRENCH DRAIN.
P-7	STRETCHER HOSE DOWN	3"	1/2"	1/2"	STERN WILLIAMS #SBC-1700 (24" X 24") COMPLETE, T-35 HOSE WITH WALL HOOK, STAINLESS STEEL BACKSPASH AND CHICAGO FAUCET #897 FAUCET.
P-8	WASHING MACHINE BOX (RESIDENTIAL)	1 1/2"	1/2"	1/2"	GUY GRAY # WB-200, PROVIDE SHOCK ARRESTORS PDI SIZE "B" ABOVE CEILING ON HOT AND COLD WATER LINES.
P-9	MOP SINK	3"	1/2"	1/2"	STERN WILLIAMS #SBC-1700 (24" X 24") COMPLETE, T-35 HOSE WITH WALL HOOK, STAINLESS STEEL BACKSPASH AND CHICAGO FAUCET #897 FAUCET.
P-10	WATER COOLER - ADA COMPLIANT	1 1/2"	1/2"	-	ELKAY # E2518WSSK B-E LEVEL WATER COOLER WITH BOTTLE FILLER STATION. COMPLETE WITH STAINLESS STEEL CABINET AND WATERWAYS THAT ARE MANUFACTURED OF 100% LEAD FREE MATERIAL. J.R. SMITH #834 FIXTURE SUPPORT EDC TA150 P-TRAP AND EDC LA10 STOP WITH SUPPLY. FULLY INSULATE P-TRAP WITH ESK IC INSULATOR. INSTALL WITH LOWER SPOUT OUTLET MAXIMUM 36" AFF. MUST MEET A.D.A. INSTALL WITH BOTTLE FILLER. INSTALL COMPLETE. PROVIDE WITH ELKAY MODEL #LKPAPREZL CANE APRON AS REQUIRED.
P-11	ICE MACHINE	-	1/2"	-	FURNISHED AND INSTALLED UNDER ANOTHER SECTION, ROUGH AND CONNECT COMPLETE, PROVIDE BALL VALVE STOP ON SUPPLY AND PIPE WASTE(S) TO FLOOR DRAIN. PROVIDE WATTS LFD9 ON COLD WATER SUPPLY IF REQUIRED BY LOCAL CODES. PIPE RELIEF FULL SIZE TO FS.
P-12	UTILITY SINK	1 1/2"	1/2"	1/2"	ADVANCE TABCO #4-41-36, K-1 FAUCET, K-5 DRAIN, MCGUIRE #8912 P-TRAP.
PT-1	PARTICLE INTERCEPTOR	4"	-	-	STRIEM PS-50-S-M. MEDIUM, SCREEN, CAST IRON LOCKABLE MANHOLE COVER.
SD	SHOWER DRAIN	2"	-	-	J.R. SMITH #2010 WITH 4" ROUND STRAINER. PROVIDE WITH J.R. SMITH TRAP INSERT.
TD-1	TRENCH DRAIN	4"	-	-	PROVIDE JR SMITH 9960-M HEAVY DUTY CLASS E TRENCH WITH DUCTILE IRON SLOTTED GRATE. TERMINATE TRENCH WITH CATCH BASIN.
TD-2	TRENCH DRAIN	4"	-	-	PROVIDE SLOTTED TRENCH IN ICEMAKER JR SMITH 9930 WITH GRATE. GRATE TO BE CUT FOR INDIRECT WASTE BELOW ICEMAKER.
WH	WALL HYDRANT	-	3/4"	-	J.R. SMITH #5509-QT, WITH INTEGRAL BACKFLOW PREVENTER, LATCHING COVER, FREEZE-PROOF AND OF PROPER LENGTH FOR WALL IN WHICH INSTALLED, ALL BRONZE BOX. VALVE SEAT MUST BE ON BUILDING SIDE OF EXTERIOR WALL INSULATION. INSTALL WITH CENTER LINE 24" ABOVE FINISH GRADE. PROVIDE OWNER WITH ONE (1) LOOSE KEY FOR EACH WALL HYDRANT.

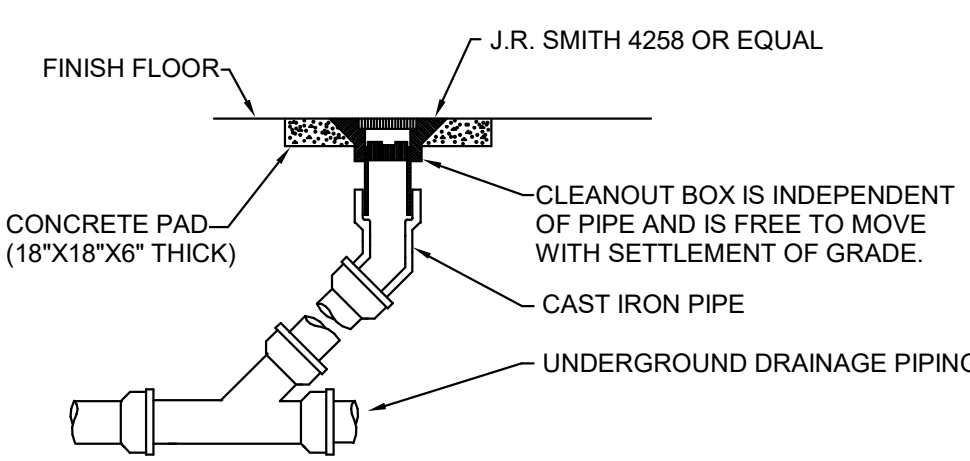
**WATER HEATER SCHEDULE**

MARK	FIXTURE	ELEC INFO.	MODEL	REMARKS
TWH-1	TANKLESS WATER HEATER	208V, 1 PHASE, 5 KW	EEMAX MODEL AM007240T	PROVIDE WITH INTEGRAL ASSE 1070 MIXING VALVE. PROVIDES 68°F TEMP. RISE AT 0.5 GPM. MOUNT BELOW LAVATORY WHERE SHOWN ON DRAWINGS. PIPE TO HW INLET OF FAUCET.
WH-1	WATER HEATER	208V, 3 PHASE, 15 KW	HS15-050	LOCHINVAR #E2518WSSK STORAGE, 41 GALLON RECOVERY AT 100°F RISE. NEW P&T RELIEF VALVE. SET OUTLET TEMPERATURE AT 140°F. INSTALL AS DETAILED ON DRAWINGS. 208V, 3 PHASE, 15 KW. VERIFY VOLTAGE WITH ELECTRICAL SECTION.
WH-2	WATER HEATER	208V, 3 PHASE, 15 KW	HS15-050	LOCHINVAR #E2518WSSK STORAGE, 41 GALLON RECOVERY AT 100°F RISE. NEW P&T RELIEF VALVE. SET OUTLET TEMPERATURE AT 140°F. INSTALL AS DETAILED ON DRAWINGS. 208V, 3 PHASE, 15 KW. VERIFY VOLTAGE WITH ELECTRICAL SECTION.
WH-3	WATER HEATER	208V, 3 PHASE, 15 KW	HS15-050	LOCHINVAR #E2518WSSK STORAGE, 41 GALLON RECOVERY AT 100°F RISE. NEW P&T RELIEF VALVE. SET OUTLET TEMPERATURE AT 140°F. INSTALL AS DETAILED ON DRAWINGS. 208V, 3 PHASE, 15 KW. VERIFY VOLTAGE WITH ELECTRICAL SECTION.

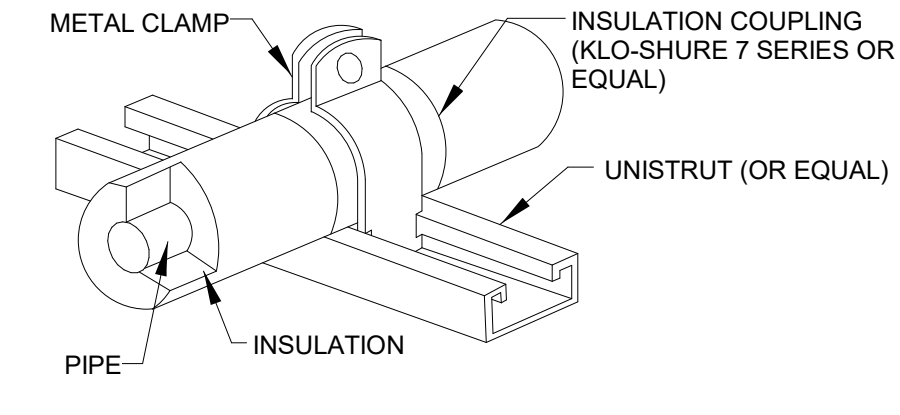
**GAS EQUIPMENT SCHEDULE**

EQUIPMENT NO.	DESCRIPTION	GAS PRESSURE REGULATOR		FLOW CFH	REMARKS
		INLET	OUTLET		
122	KITCHEN EQUIP. RANGE	2 PSI	7" WC	92	ROUGH AND CONNECT
GFH-1	HVAC EQUIPMENT	2 PSI	7" WC	150	ROUGH AND CONNECT
GFH-2	HVAC EQUIPMENT	2 PSI	7" WC	150	ROUGH AND CONNECT
GFH-3	HVAC EQUIPMENT	2 PSI	7" WC	150	ROUGH AND CONNECT
GENERATOR	HVAC EQUIPMENT	2 PSI	11" WC	2782	ROUGH AND CONNECT. 150 KW

SEE KITCHEN SCHEDULE FOR ADDITIONAL INFORMATION

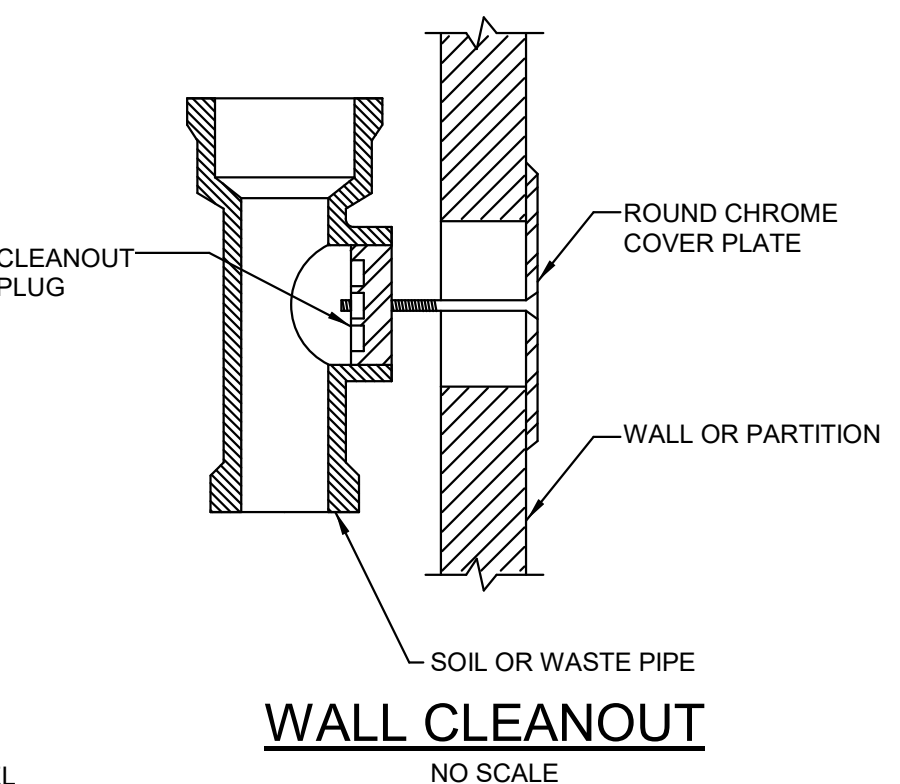


**DETAIL OF CLEANOUT TO GRADE**  
NO SCALE

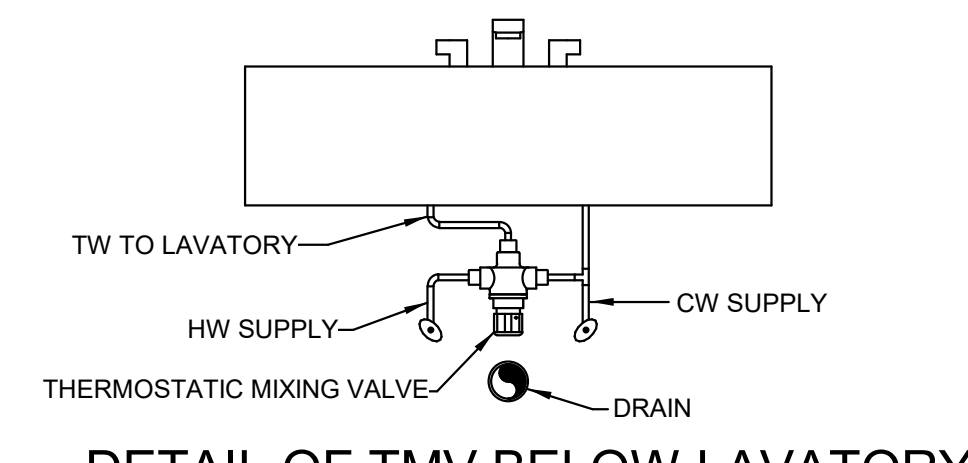


- NOTES:**
- APPLICATION: FOR STRUT MOUNTED, 4 INCH AND SMALLER, COFFEE PIPE WITH FOAMED PLASTIC (ARMAFLEX) OR FIBERGLASS INSULATION.
  - ALLOWED FOR HORIZONTAL OR VERTICAL INSTALLATION.
  - FOR COLD PIPE APPLICATION, APPLY ADHESIVE TO END OF FOAMED PLASTIC INSULATION PRIOR TO INSERTING INTO COUPLING.

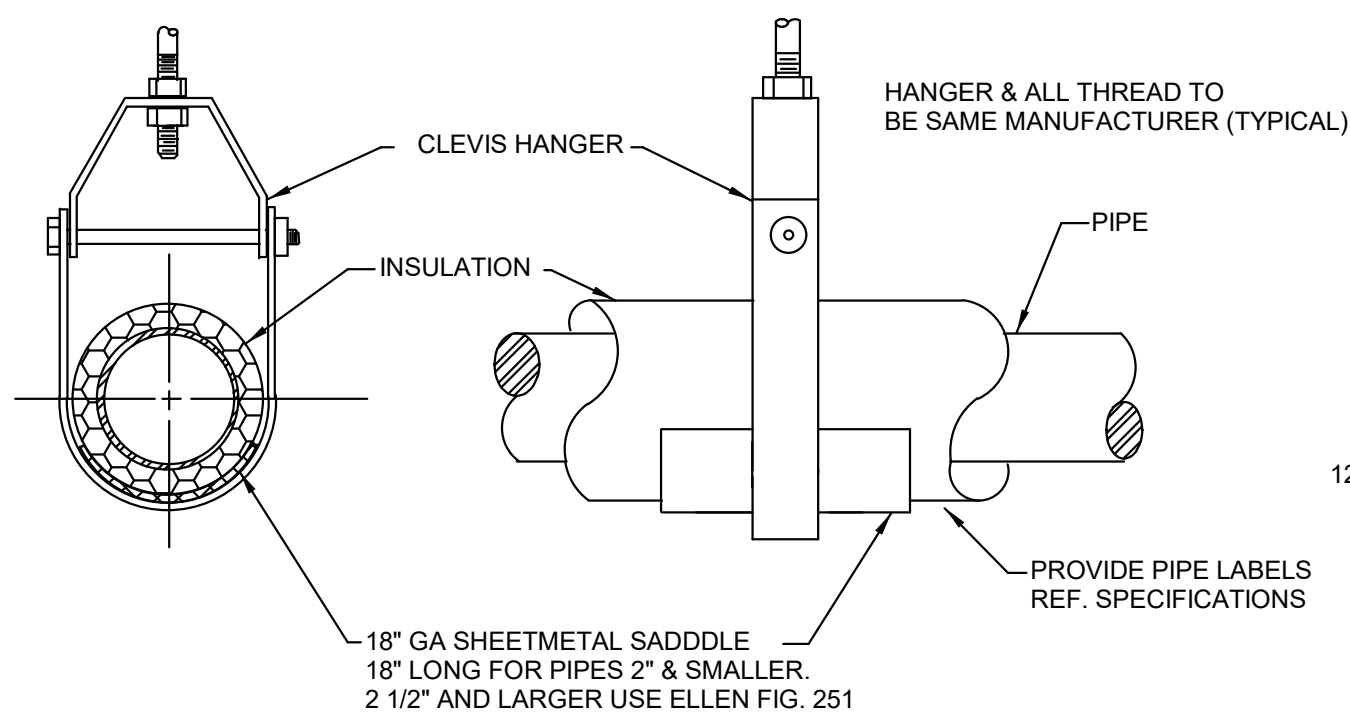
**STRUT-MOUNTED PIPING SUPPORT INSULATION COUPLING DETAIL**  
NO SCALE



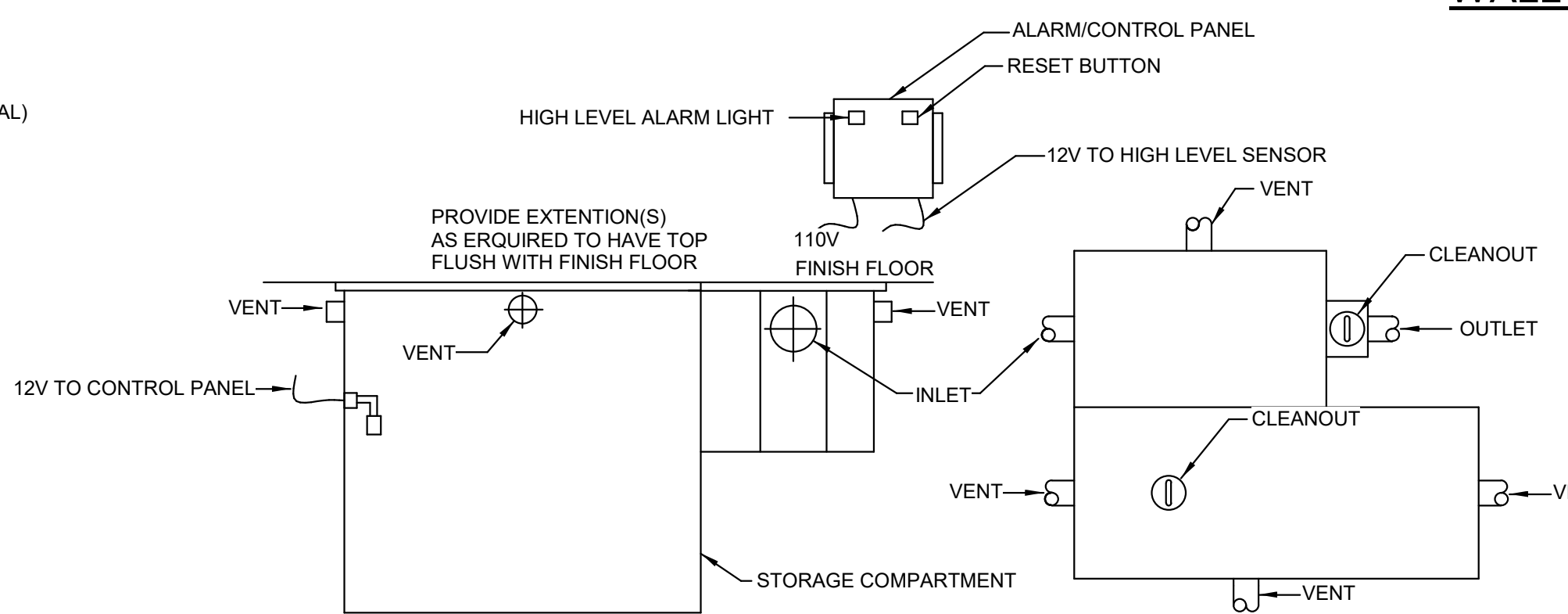
**WALL CLEANOUT**  
NO SCALE



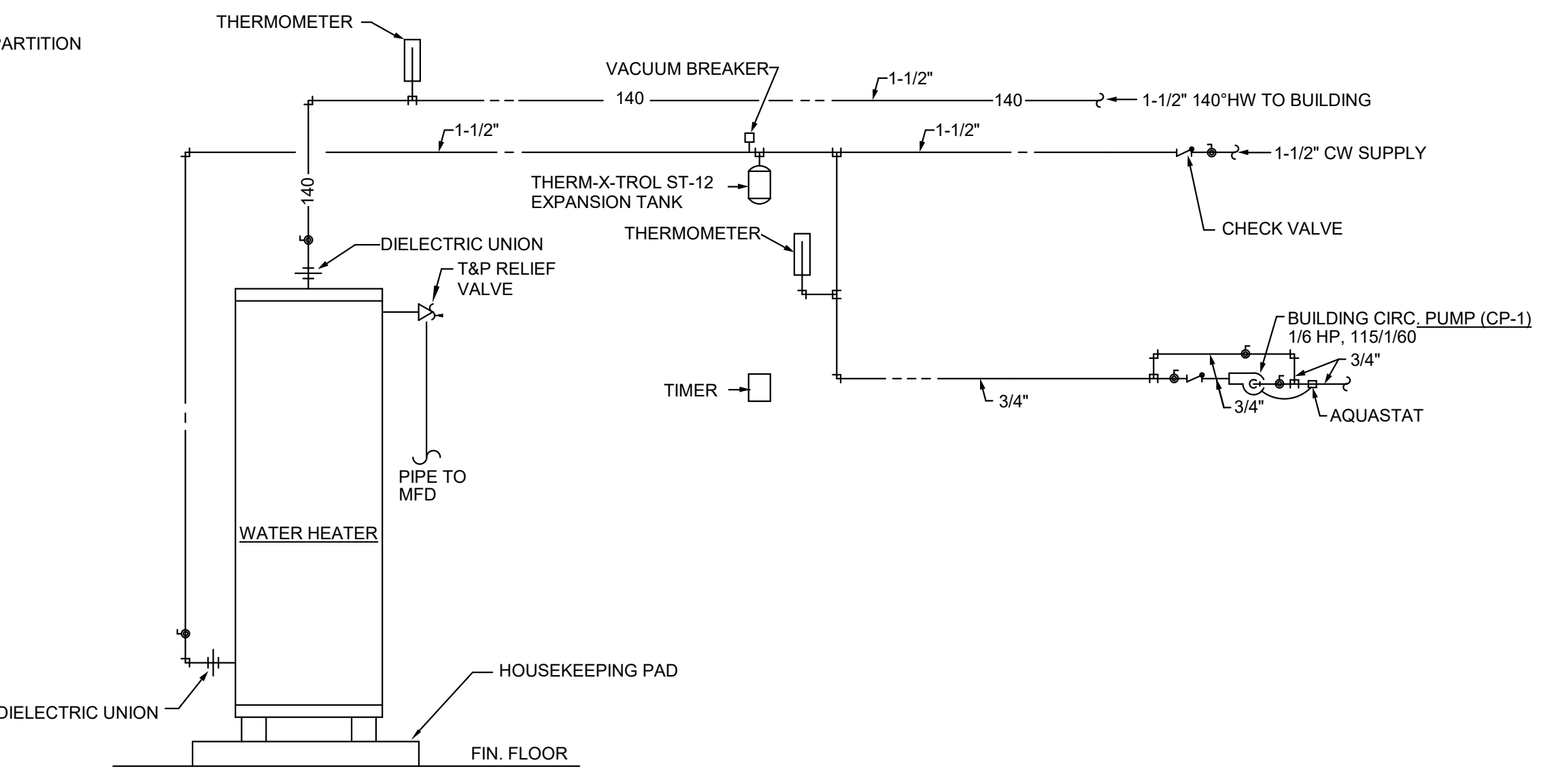
**DETAIL OF TMV BELOW LAVATORY**  
NO SCALE



**SUSPENDED PIPE SUPPORT**  
NO SCALE



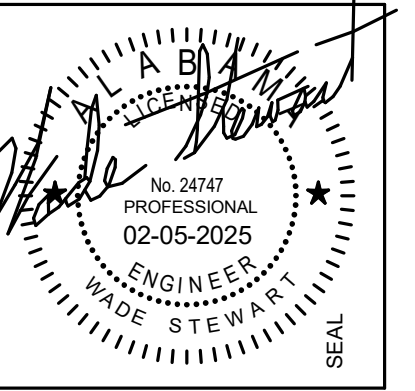
**DETAIL of OIL/WATER SEPARATOR**  
NO SCALE



**DETAIL OF WATER HEATER - WH-3**  
NO SCALE

**Dewberry**  
2 Riverchase Office Plaza  
Suite 205  
Hoover, AL 35244  
(205) 988-2699  
www.dewberry.com  
Project Number :  
50171742

No.	Date	Description
1	2/5/2025	Revision 1



100% CDS

**IRONDALE FIRE STATION #3**  
INT. OF JOHN ROGERS DRIVE & ALTON ROAD  
Birmingham, Alabama  
CITY OF IRONDALE

CHARLES WILLIAMS & ASSOCIATES ARCHITECTS  
PH: 205-250-0700  
3601 8TH AVE. SOUTH BIRMINGHAM, ALABAMA 35222  
FAX: 205-250-0515

SHEET TITLE:  
**PLUMBING SCHEDULES AND NOTES**  
PROJECT NUMBER:  
**CWA No. 2023-01**  
DATE:  
**08.30.24**  
DRAWN BY:  
**JTR**  
CHECKED BY:  
**CLJ**

SHEET NUMBER  
**P0.1**

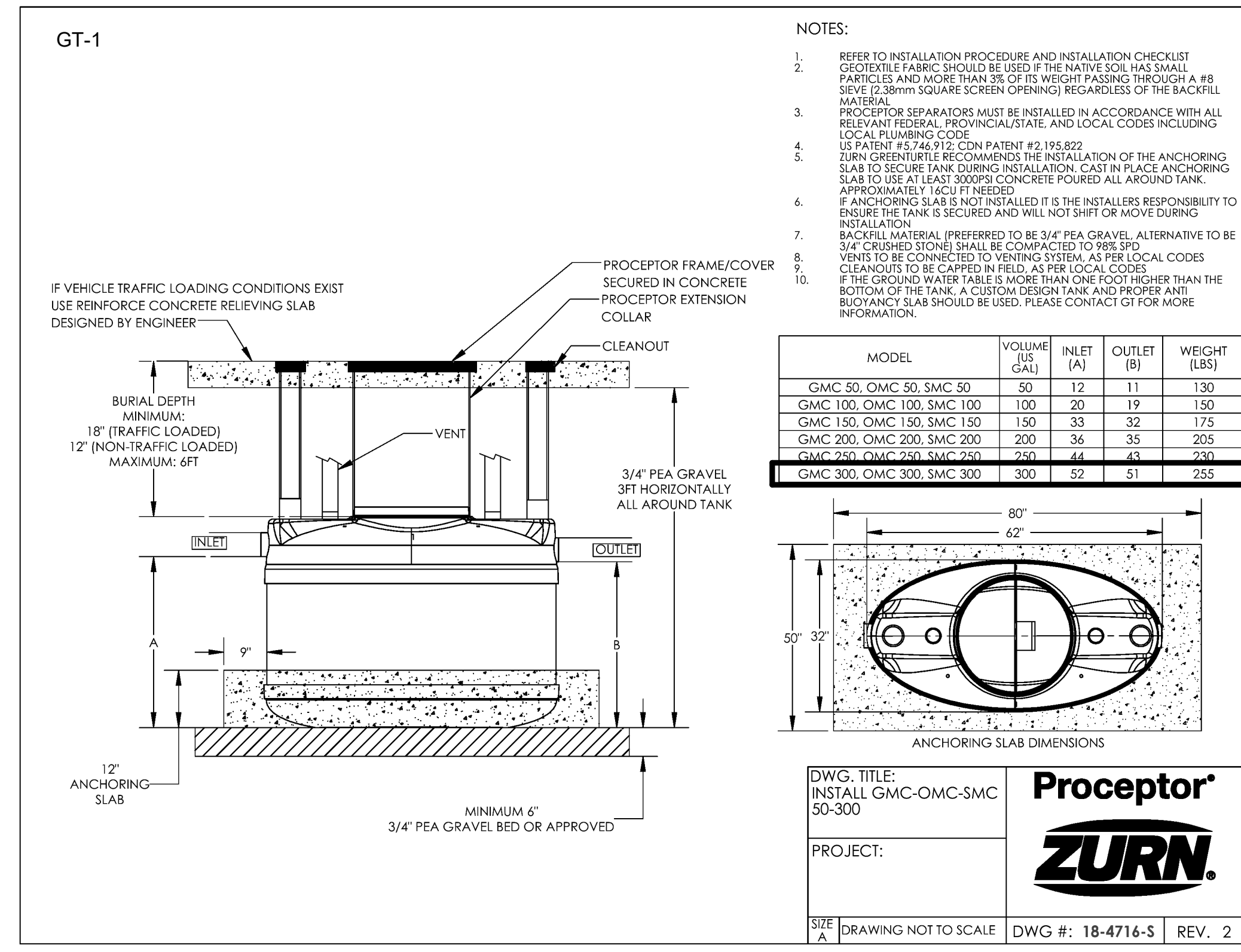
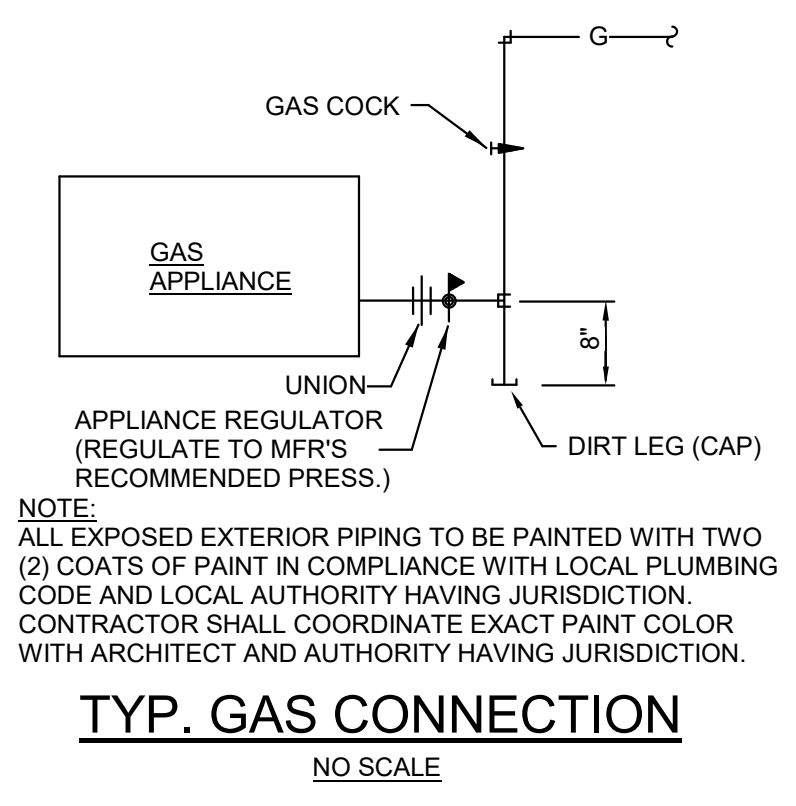
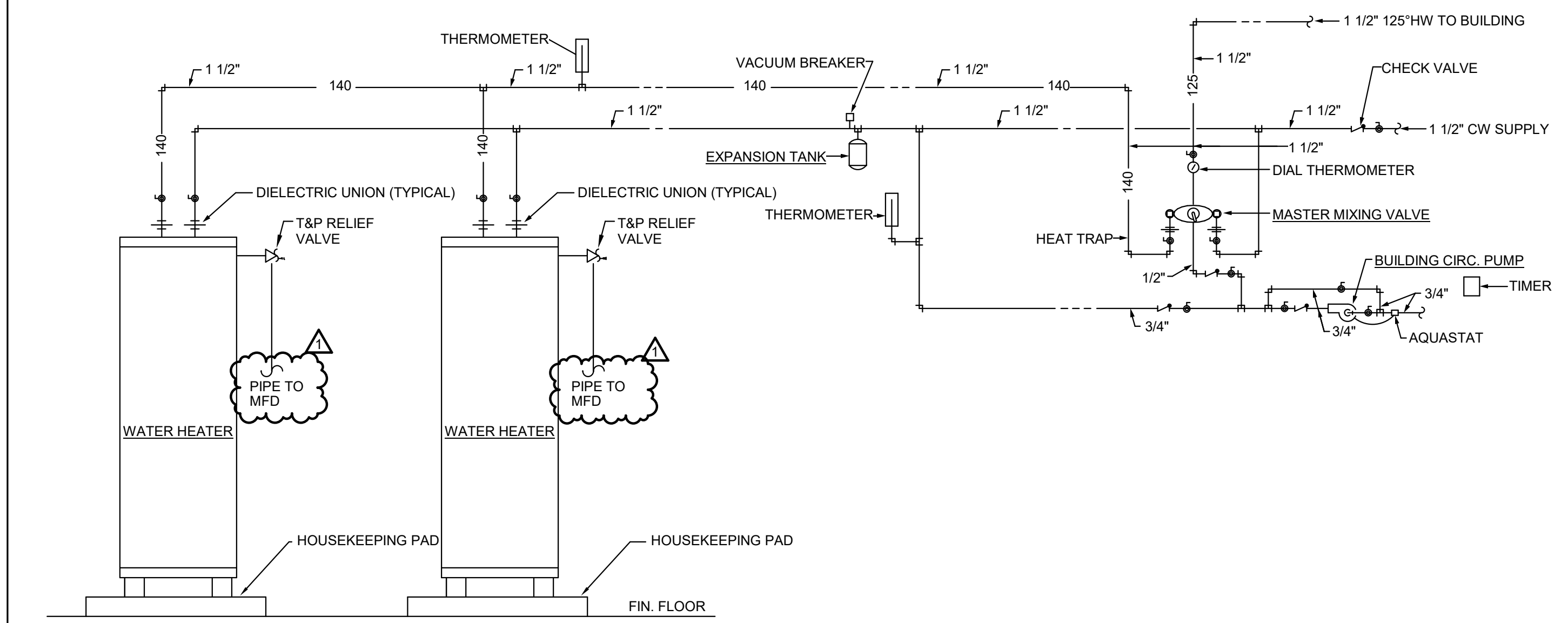
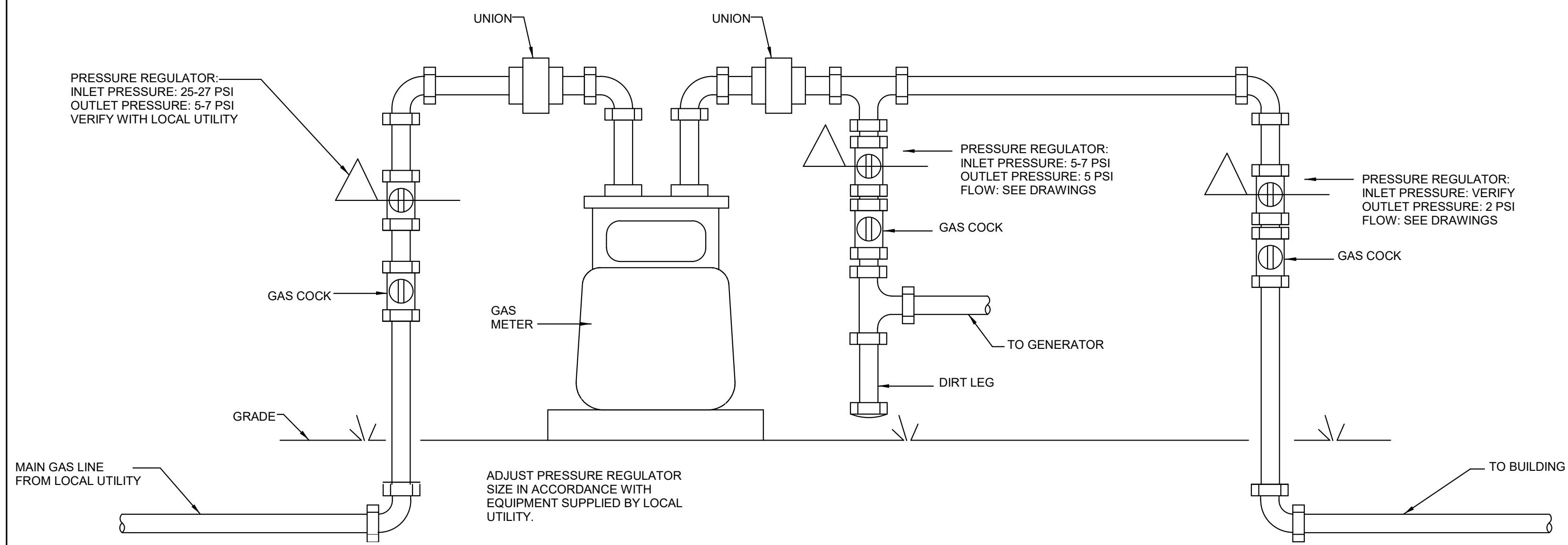


100% CDS

**IRONDALE FIRE STATION #3**  
 INT. OF JOHN ROGERS DRIVE & ALTON ROAD  
 Birmingham, Alabama  
 CITY OF IRONDALE

CHARLES WILLIAMS & ASSOCIATES ARCHITECTS  
**CWA**  
 3601 8TH AVE. SOUTH BIRMINGHAM, ALABAMA 35222  
 PH: 205-250-0700  
 FAX: 205-250-0515

SHEET TITLE:  
**PLUMBING - DETAILS**  
 PROJECT NUMBER:  
**CWA No. 2023-01**  
 DATE:  
**08.30.24**  
 DRAWN BY: JTR  
 CHECKED BY: CLJ  
 SHEET NUMBER:  
**P0.2**



**SMITH JAY R. SMITH MFG. CO.**  
 9931-HDF  
**9931-HDF SERIES ENVIRO-FLO® II EXTRA HEAVY DUTY DRAIN SYSTEM**

REGULARLY FURNISHED:  
 1 Meter (3.281) 100% Polypropylene U.V. Inhibitors Channel of Interlocking Design with a Built-in Slope of 0.6% with Radiused Bottom along with Black Painted Steel Frame System. Supplied with Secured Grate.

EXTRA HEAVY RATED GRATING CLASS E

VARIATIONS:  
 Grate Specifications (See Back)  
 Clipping End Cap Shallow-ES  
 Horizontal Outlet 4" DIA  
 Catch Basin Only 9936-20  
 End Frame-EF (Specify 1/2 or 1 meter long)  
 Direction Change Coupling-MIC  
 4" NO-HUB Bottom Outlet Adaptor -BO\*\*  
 Stainless Steel Frame

FIGURE NUMBER: **9931-HDF**

**SMITH JAY R. SMITH MFG. CO.**  
 9931-HDF-BS  
**9931-HDF SERIES ENVIRO-FLO® II EXTRA HEAVY DUTY DRAIN SYSTEM**

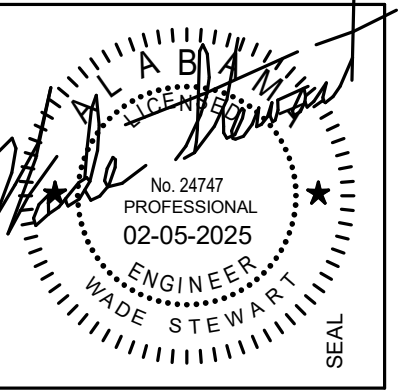
HYDRAULIC CAPACITY AND DEEP END DEPTHS 9931 SYSTEM

CHANNEL NUMBER	DEEP END DEPTH IN.	MM.	SLOPE	EST CFS	EST GPM	WEIGHT Lbs.
9931-1	5.50	140	0.6%	29	130	23.02
9931-1M	5.50	140	0.6%	29	130	23.02
9931-2	5.75	146	0.6%	31	139	23.12
9931-2M	5.75	146	0.6%	31	139	23.12
9931-3	6.00	152	0.6%	34	152	23.32
9931-3M	6.00	152	0.6%	34	152	23.32
9931-4	6.25	159	0.6%	36	162	23.42
9931-4M	6.25	159	0.6%	36	162	23.42
9931-5	6.50	165	0.6%	39	175	23.52
9931-5M	6.50	165	0.6%	39	175	23.52
9931-6	6.75	171	0.6%	42	189	23.72
9931-6M	6.75	171	0.6%	42	189	23.72
9931-7	7.00	178	0.6%	45	202	23.92
9931-7M	7.00	178	0.6%	45	202	23.92
9931-8	7.25	184	0.6%	47	211	24.32
9931-8M	7.25	184	0.6%	47	211	24.32
9931-9	7.50	191	0.6%	49	220	24.32
9931-9M	7.50	191	0.6%	49	220	24.32
9931-10	7.75	197	0.6%	53	238	24.32
9931-10M	7.75	197	0.6%	53	238	24.32
9931-11	8.00	203	0.6%	56	251	24.52
9931-11M	8.00	203	0.6%	56	251	24.52
9931-12	8.25	210	0.6%	58	261	24.52
9931-12M	8.25	210	0.6%	58	261	24.52
9931-13	8.50	216	0.6%	61	274	24.92
9931-13M	8.50	216	0.6%	61	274	24.92
9931-14	8.75	222	0.6%	64	287	24.92
9931-14M	8.75	222	0.6%	64	287	24.92
9931-15	9.00	229	0.6%	67	301	25.12
9931-15M	9.00	229	0.6%	67	301	25.12
9931-16	9.25	235	0.6%	70	314	25.32
9931-16M	9.25	235	0.6%	70	314	25.32
9931-17	9.50	241	0.6%	73	328	25.32
9931-17M	9.50	241	0.6%	73	328	25.32
9931-18	9.75	248	0.6%	76	341	25.52
9931-18M	9.75	248	0.6%	76	341	25.52
9931-19	10.00	254	0.6%	79	355	25.72
9931-19M	10.00	254	0.6%	79	355	25.72
9931-20	10.25	260	0.6%	82	368	25.92
9931-20M	10.25	260	0.6%	82	368	25.92

FIGURE NUMBER: **9931-HDF-BS**



Revisions		
No.	Date	Description
1	2/5/2025	Revision 1



100% CDS

**IRONDALE FIRE STATION #3**  
 INT. OF JOHN ROGERS DRIVE & ALTON ROAD  
 Birmingham, Alabama  
 CITY OF IRONDALE

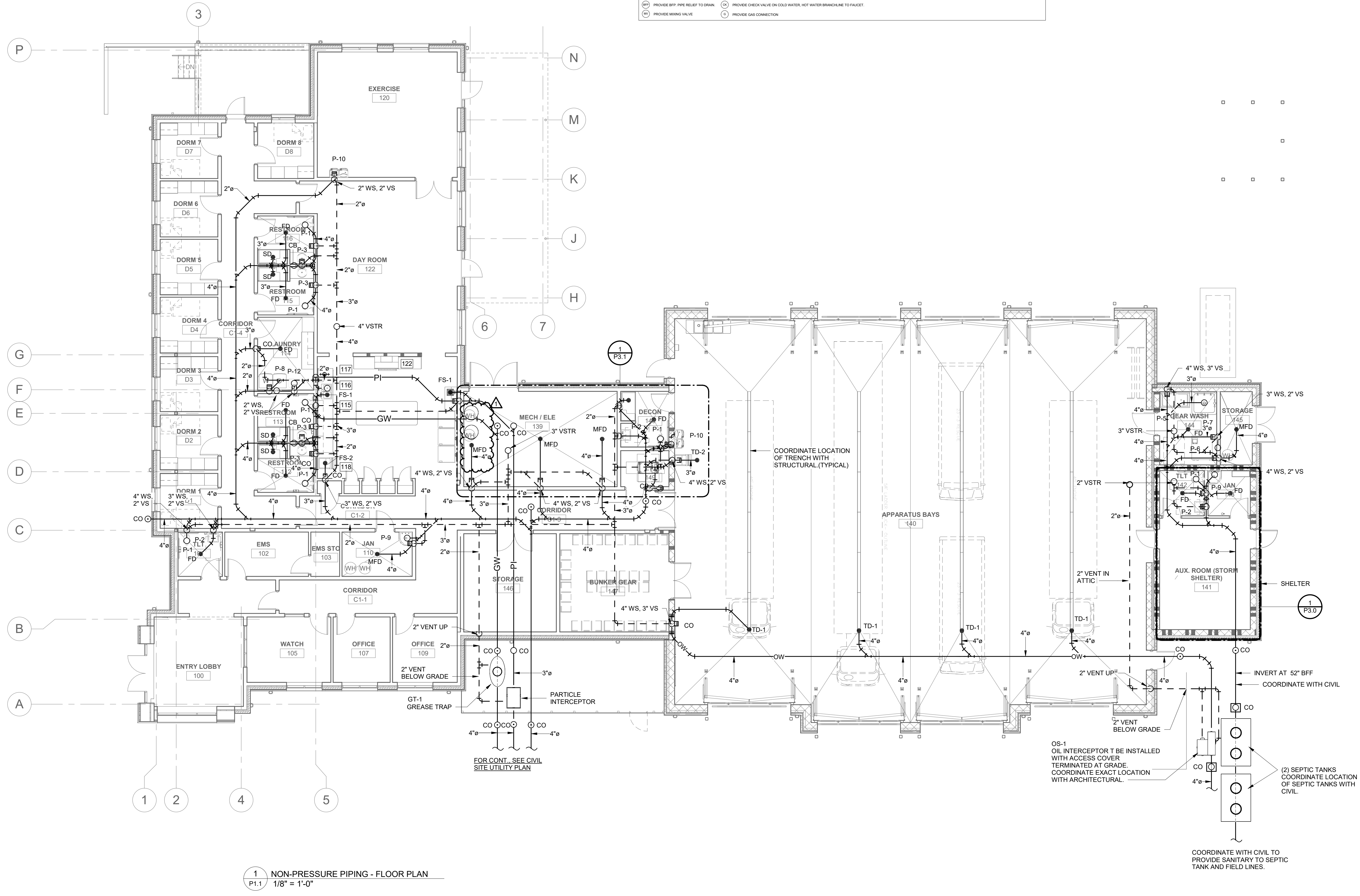
CHARLES WILLIAMS & ASSOCIATES ARCHITECTS  
 PH: 205-250-0700  
 BIRMINGHAM, ALABAMA 35222  
 FAX: 205-250-0515

SHEET TITLE:  
**NON-PRESSURE PIPING - FLOOR PLAN**  
 PROJECT NUMBER:  
**CWA No. 2023-01**  
 DATE:  
**08.30.24**  
 DRAWN BY:  
**JTR**  
 CHECKED BY:  
**CLJ**

SHEET NUMBER  
**P1.1**

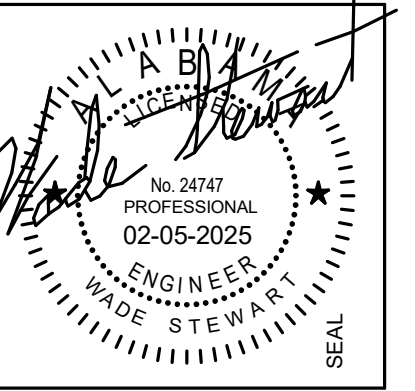
KITCHEN PLUMBING ROUGH-IN DATA							
ITEM	QTY	DESCRIPTION	HW (IN)	GW (IN)	GAS (IN)	WASTE (IN)	REMARKS
P102	1	JANITORIAL SINK W/ FACET & MOP RACK	-	-	-	-	REFER TO MECHANICAL PLAN
P105	2	BUILT-IN HANDSINK W/ KASH & FACET	12	-	1 1/2	-	(C)(O)
P106	1	COFFEE BREWER	-	1/4	-	1 1/2	(P)
P107	1	MILLWORK BASE COUNTER W/ SINK	12	-	1 1/2	-	
P112	1	MILLWORK BASE COUNTER W/ SINK	12	-	1 1/2	-	
P115	1	BUILT-IN SINK W/ FACET	12	-	2"	-	(C)(O)
P116	5	DISPOSER	-	-	2"	-	(P)
P117	1	DISHWASHER	-	-	2"	-	
P118	1	ICE MAKER W/ SINK	-	-	3/4"	-	(P)
P122	1	5 EYE RANGE WITH OVEN	-	-	3/4"	-	(C)
P127	3	REFRIG FRIG COMBO	-	-	-	-	

(P) PROVIDE BFP. PIPE RELIEF TO DRAIN. (C) PROVIDE CHECK VALVE ON COLD WATER, HOT WATER BRANCHLINE TO FAUCET.  
 (M) PROVIDE MIXING VALVE (G) PROVIDE GAS CONNECTION



1 NON-PRESSURE PIPING - FLOOR PLAN  
 P1.1 1/8" = 1'-0"

Revisions		
No.	Date	Description
1	2/5/2025	Revision 1



100% CDS

**IRONDALE FIRE STATION #3**  
 INT. OF JOHN ROGERS DRIVE & ALTON ROAD  
 Birmingham, Alabama  
 CITY OF IRONDALE

CHARLES WILLIAMS & ASSOCIATES ARCHITECTS  
**CWA**  
 3601 8TH AVE. SOUTH BIRMINGHAM, ALABAMA 35222  
 PH: 205-250-0700  
 FAX: 205-250-0515

SHEET TITLE:  
**PRESSURE PIPING - FLOOR PLAN**  
 PROJECT NUMBER:  
**CWA No. 2023-01**  
 DATE:  
**08.30.24**  
 DRAWN BY:  
**JTR**  
 CHECKED BY:  
**CLJ**

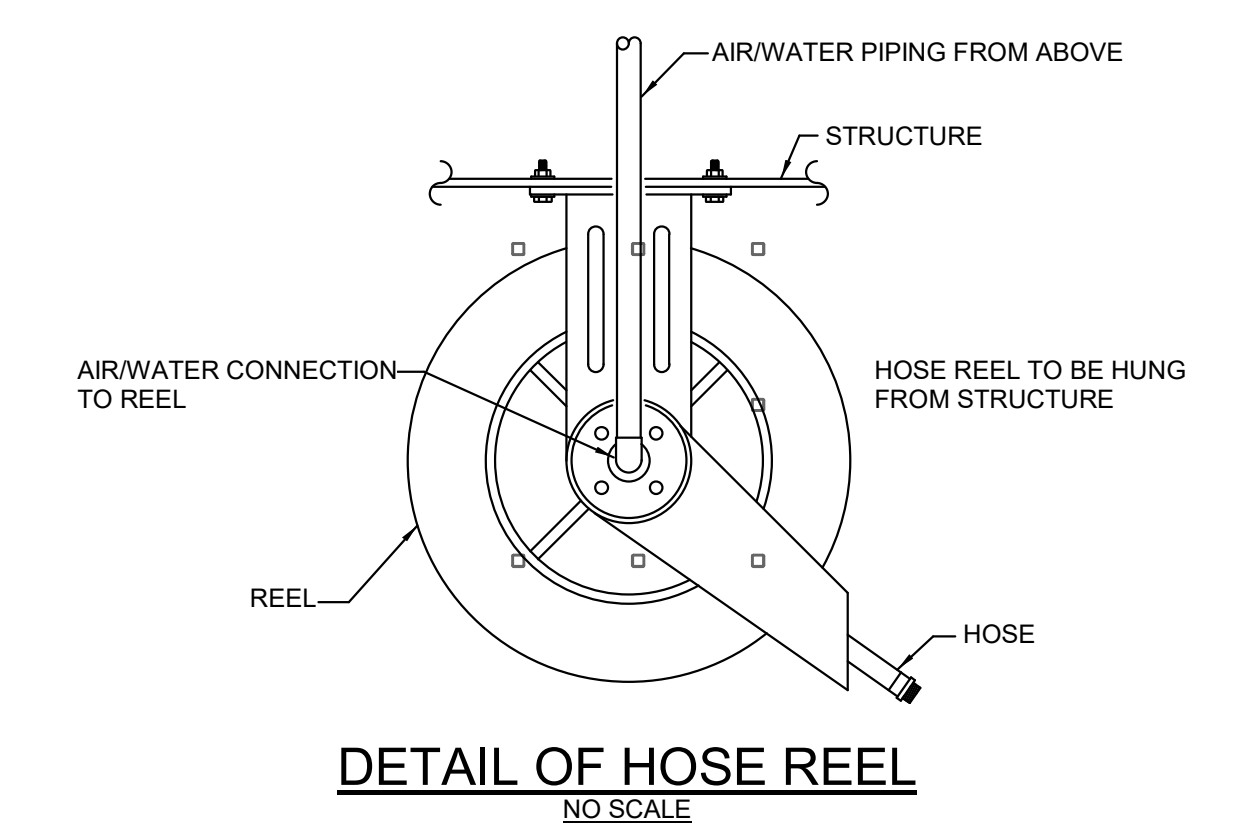
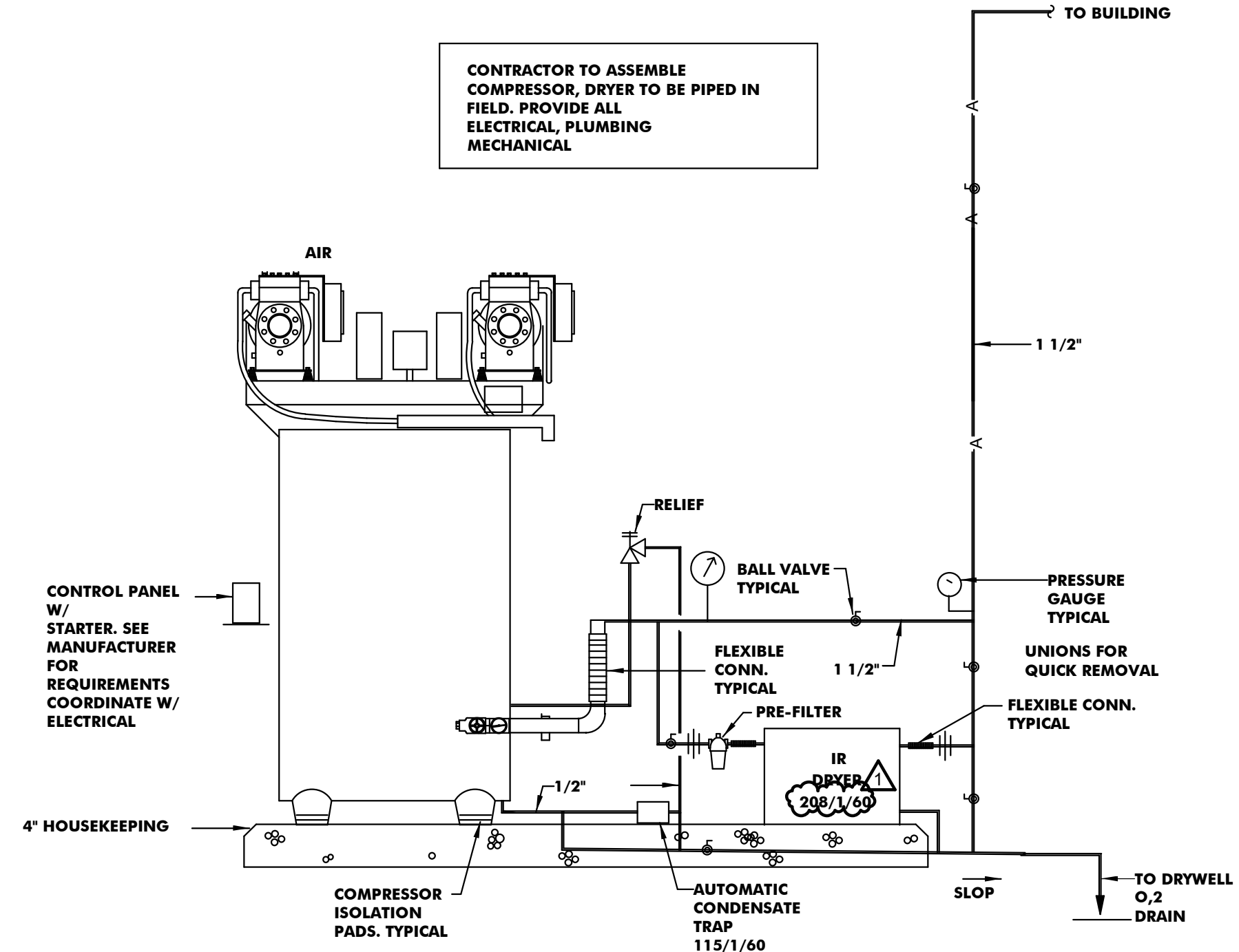
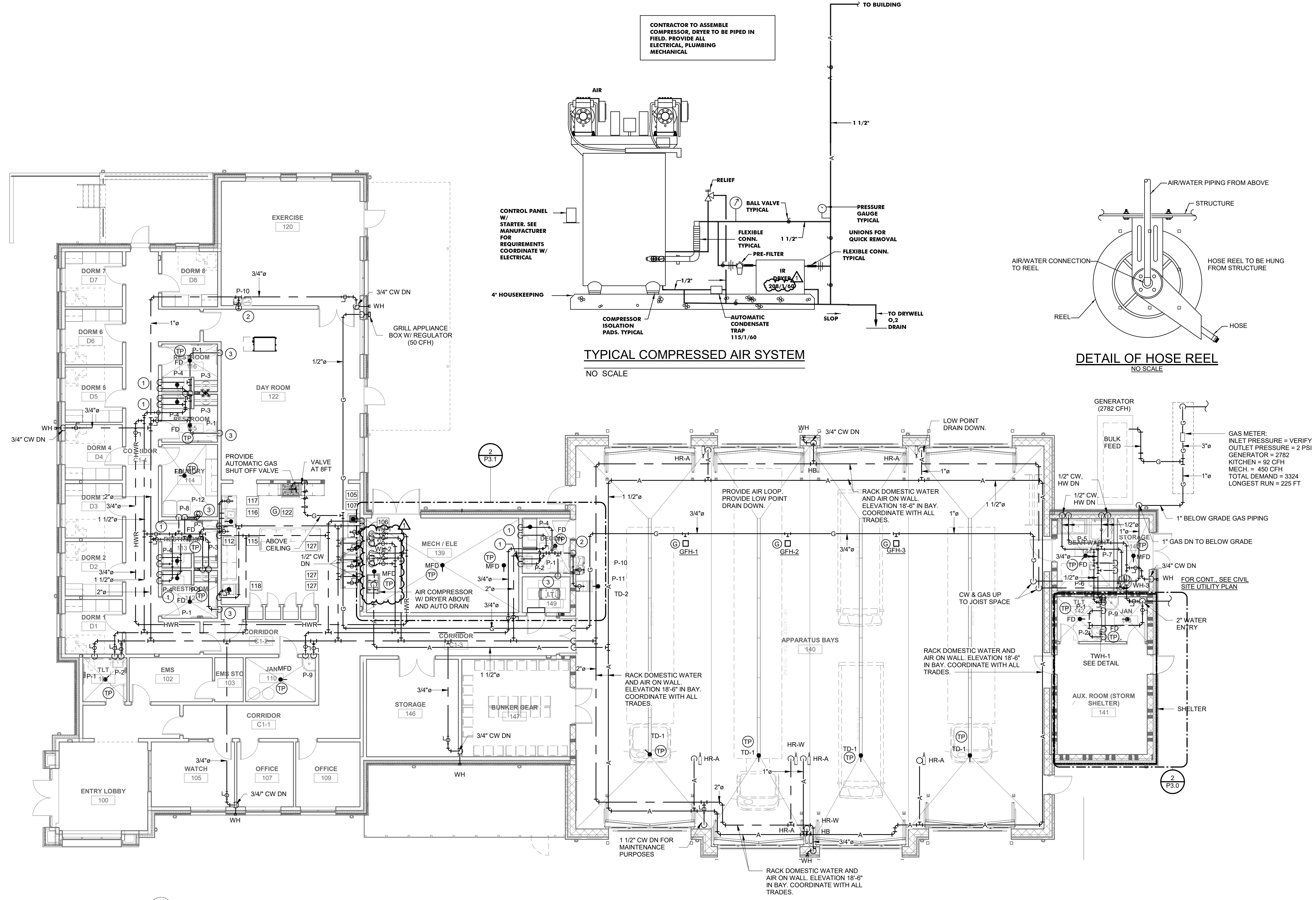
SHEET NUMBER  
**P2.1**

**PRESSURE KEY NOTES**  
 ① 1/2" CW, 1/2" HW DN.  
 ② 1/2" CW DN.  
 ③ 1" CW DN

**KITCHEN PLUMBING ROUGH-IN DATA**

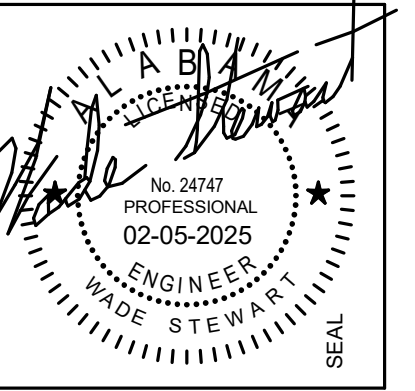
ITEM	QTY	DESCRIPTION	HW (DN)	CW (DN)	GAS (DN)	WASTE (DN)	REMARKS
P102	1	ZANUSINI SINK W/ FAUCET & MOP BACK	1/2	1/2	-	1 1/2	REFER TO MECHANICAL PLAN
P105	2	BUILT IN HANDSINK W/ SPLASH & FAUCET	1/2	1/2	-	1 1/2	(C)(C)
P106	1	COFFEE BREWER	-	1/4	-	1 1/2	(C)
P107	1	MILKWORK BASE COUNTER W/ SINK	1/2	1/2	-	1 1/2	-
P112	1	MILKWORK BASE COUNTER W/ SINK	1/2	1/2	-	1 1/2	-
P115	1	BUILT IN SINK W/ FAUCET	1/2	1/2	-	2"	(C)(C)
P116	5	DISPOSER	-	1/2	-	2"	(P)
P117	1	DISHWASHER	-	1/2	-	2"	(P)
P118	1	EYE WASHER SINK	-	1/2	-	3/4"	(P)
P122	1	6 EYE RANGE WITH OVEN	1/2	-	3/4	-	(C)
P127	3	REFRIG FRIGR COMBO	1/2	-	-	-	-

(M) PROVIDE BFP PIPE RELIEF TO DRAIN    (C) PROVIDE CHECK VALVE ON COLD WATER, HOT WATER BRANCHLINE TO FAUCET.  
 (W) PROVIDE WING VALVE    (A) PROVIDE GAS CONNECTION



1 PRESSURE PIPING - FLOOR PLAN  
 P2.1 1/8" = 1'-0"

Revisions		
No.	Date	Description
1	2/5/2025	Revision 1



100% CDS

**IRONDALE FIRE STATION #3**  
 INT. OF JOHN ROGERS DRIVE & ALTON ROAD  
 Birmingham, Alabama  
 CITY OF IRONDALE

CHARLES WILLIAMS  
 & ASSOCIATES  
 ARCHITECTS  
**CWA**  
 3601 8TH AVE. SOUTH  
 BIRMINGHAM, ALABAMA 35222  
 PH: 205-250-0700  
 FAX: 205-250-0515

SHEET TITLE:  
**PLUMBING - ENLARGED PLANS**  
 PROJECT NUMBER:  
**CWA No. 2023-01**  
 DATE:  
**08.30.24**  
 DRAWN BY: **JTR** CHECKED BY: **CLJ**

SHEET NUMBER  
**P3.1**

