

SECTION 08 71 00
DOOR HARDWARE

PART 1 - GENERAL

1.1 DESCRIPTION

- A. Door hardware and related items necessary for complete installation and operation of doors.

1.2 RELATED WORK

- A. Caulking: Section 07 92 00 JOINT SEALANTS.
- B. Application of Hardware: Section 08 11 13, HOLLOW METAL DOORS AND FRAMES; and Section 32 31 33, CHAIN LINK FENCES AND GATES.
- C. Painting: Section 09 91 00, PAINTING.
- D. Electrical: Division 26, ELECTRICAL.

1.3 GENERAL

- A. All hardware shall comply with ABAAS, (Architectural Barriers Act Accessibility Standard) unless specified otherwise.
- B. Provide rated door hardware assemblies where required by most current version of the International Building Code (IBC).
- C. Hardware for Labeled Fire Doors and Exit Doors: Conform to requirements of NFPA 80 for labeled fire doors and to NFPA 101 for exit doors, as well as to other requirements specified. Provide hardware listed by UL, except where heavier materials, large size, or better grades are specified herein under paragraph HARDWARE SETS. In lieu of UL labeling and listing, test reports from a nationally recognized testing agency may be submitted showing that hardware has been tested in accordance with UL test methods and that it conforms to NFPA requirements.
- D. Hardware for application on metal and wood doors and frames shall be made to standard templates. Furnish templates to the fabricator of these items in sufficient time so as not to delay the construction.
- E. The following items shall be of the same manufacturer, except as otherwise specified:
 - 1. Mortise locksets.
 - 2. Hinges for hollow metal and wood doors.
 - 3. Surface applied overhead door closers.
 - 4. Exit devices.
 - 5. Floor closers.

4. Submit written report identifying problems.

3.4 DEMONSTRATION

- A. Demonstrate efficacy of mechanical hardware and electrical, and electronic hardware systems, including adjustment and maintenance procedures, to satisfaction of Resident/Project Engineer and VA Locksmith.

3.5 HARDWARE SETS

- A. Following sets of hardware correspond to hardware symbols shown on drawings. Only those hardware sets that are shown on drawings will be required. Disregard hardware sets listed in specifications but not shown on drawings.
- B. Hardware Consultant working on a project will be responsible for providing additional information regarding these hardware sets. The numbers shown in the following sets come from BHMA standards.

ELECTRIC HARDWARE ABBREVIATIONS LEGEND:

ADO = Automatic Door Operator

EMCH = Electro-Mechanical Closer-Holder

MHO = Magnetic Hold-Open (wall- or floor-mounted)

INTERIOR SINGLE DOORS

HW-2D

Each Door to Have:

RATED

Hinges	QUANTITY & TYPE AS REQUIRED
1 Privacy Lock	F02-MOD X OCCUPANCY INDICATOR
1 Closer	C02011/C02021
1 Kick Plate	J102
1 Mop Plate (@ Inswing Doors)	J103
1 Wall Stop	L02101 CONVEX
1 Set Self-Adhesive Seals	R0Y154
STONE THRESHOLD BY OTHER TRADES.	

HW-2G

Each Door to Have:

RATED/NON-RATED

Hinges	QUANTITY & TYPE AS REQUIRED
1 Keyed Privacy Indicator Lock	F13 x OCCUPANCY INDICATOR
1 Closer	C02011/C02021
1 Kick Plate	J102
1 Mop Plate (@ Inswing Doors)	J103
1 Floor Stop	L02121 x 3 FASTENERS
1 Auto Door Bottom	R0Y346 - HEAVY DUTY
2 Set Self-Adhesive Seals	R0Y154

STONE THRESHOLD BY OTHER TRADES.

HW-3B

Each Door to Have:

NON-RATED/RATED

Hinges	QUANTITY & TYPE AS REQUIRED
1 Office Lock	F04
1 Closer	C02011/C02021
1 Floor Stop	L02121 x 3 FASTENERS
1 Door Viewer	L03221 - 190° (VIEW INTO CORRIDOR)
1 Set Self-Adhesive Seals	R0Y154

INTERIOR PAIRS OF DOORS - NOT USED

EXTERIOR SINGLE DOORS - NOT USED

EXTERIOR PAIRS OF DOORS

HW-E6

Each Pair to Have:

NON-RATED

2	Continuous Hinge	
1	Set Auto Flush Bolts	TYPE 25
1	Dust Proof Strike	L04021
1	Entry Lock	F11
1	Overlapping Astragal with Self-Adhesive Seal	R0Y634 x R0Y154 x THRU-BOLTS
1	Coordinator	TYPE 21A
2	Closer	C02011/C02021
2	Kick Plate	J102
2	Floor Stop	L02121 x 3 FASTNERS
1	Threshold (outswing door)	J32120 x SILICONE GASKET
1	Threshold (inswing door)	ALUMINUM, PER ARCHITECTURAL DETAIL
2	Door Sweep	R0Y416
1	Set Frame Seals	R0Y164
1	Drip	R0Y976

EXTERIOR SINGLE GATES

HW-G4

Each Gate to Have:

NON-RATED

2	Weldable Gate Hinges	A8181 (3 KNUCKLE) X 5 INCHES X WELDED OR FASTENED X SHEAR HINGE LEAVES TO FIT GATE MEMBERS
1	Weldable Panic Box	
1	Anti-Vandal Pull	
1	Rim Panic Device	TYPE 1 F03 LESS TRIM
1	Cylinder	TYPE AS REQUIRED
1	Stainless Steel Closer	C52011/C22021

BALANCE OF HARDWARE BY SECTION 32 31 53, PERIMETER SECURITY FENCES AND
GATES

EXTERIOR PAIRS OF GATES

HW-G7

Each Pair Gates to Have:

NON-RATED

4 Weldable Gate Hinges A8181 (3 KNUCKLE) X 5 INCHES X WELDED OR
FASTENED X SHEAR HINGE LEAVES TO FIT
GATE MEMBERS

2 Padlockable Cane Bolts

2 Padlocks TYPE AS REQUIRED

1 Weldable Lock Box

1 Utility Lock F09 X NON-FERROUS LOCK CASE

2 Stainless Steel Closer C52011/C22021

BALANCE OF HARDWARE BY SECTION 32 31 53, PERIMETER SECURITY FENCES AND
GATES. INSTALL CANE BOLTS ON PULL SIDE OF EACH LEAF. ACTIVE LEAF CANE BOLT
TO HAVE STRIKE IN OPEN POSITION ONLY. INACTIVE LEAF CANE BOLT TO HAVE
STRIKES IN BOTH OPEN AND CLOSED POSITIONS.

HW-G10

Each Rolling or Swing-Up Gate to Have:

NON-RATED

1 Padlock or 2 Cylinders TYPE AS REQUIRED

BALANCE OF HARDWARE BY SECTION 32 31 53, PERIMETER SECURITY FENCES AND
GATES.

RESIDENTIAL UNIT PAIRS OF DOORS - NOT USED

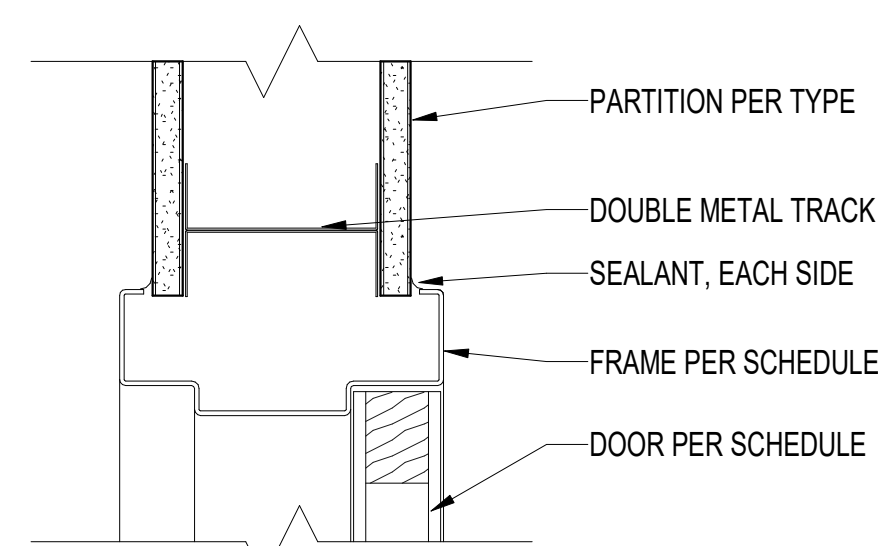
INTERIOR SINGLE SECURITY DOORS - NOT USED

INTERIOR PAIRS OF SECURITY DOORS - NOT USED

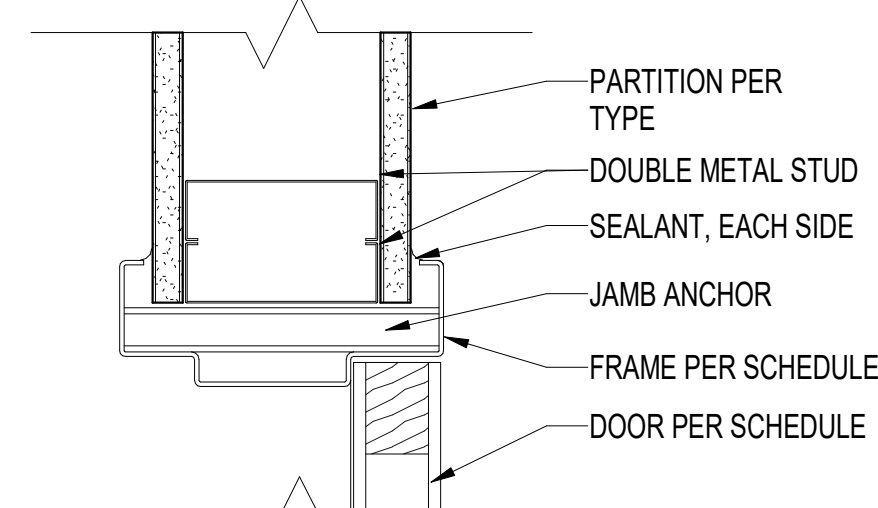
EXTERIOR SINGLE SECURITY DOORS - NOT USED

MENTAL HEALTH AREAS - NOT USED

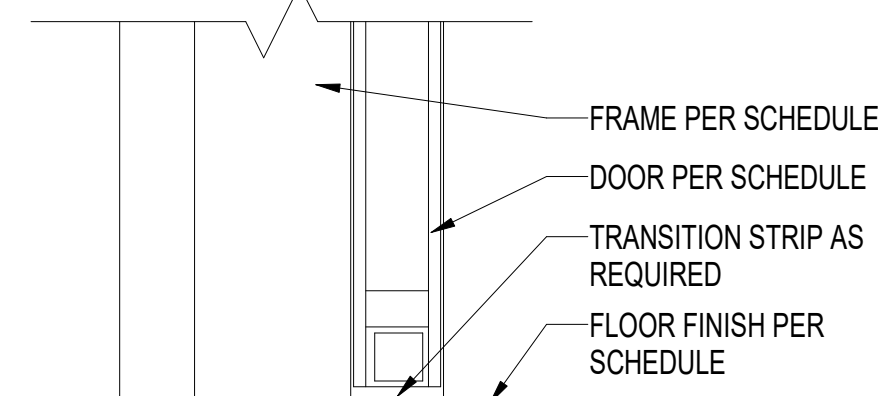
- - - E N D - - -



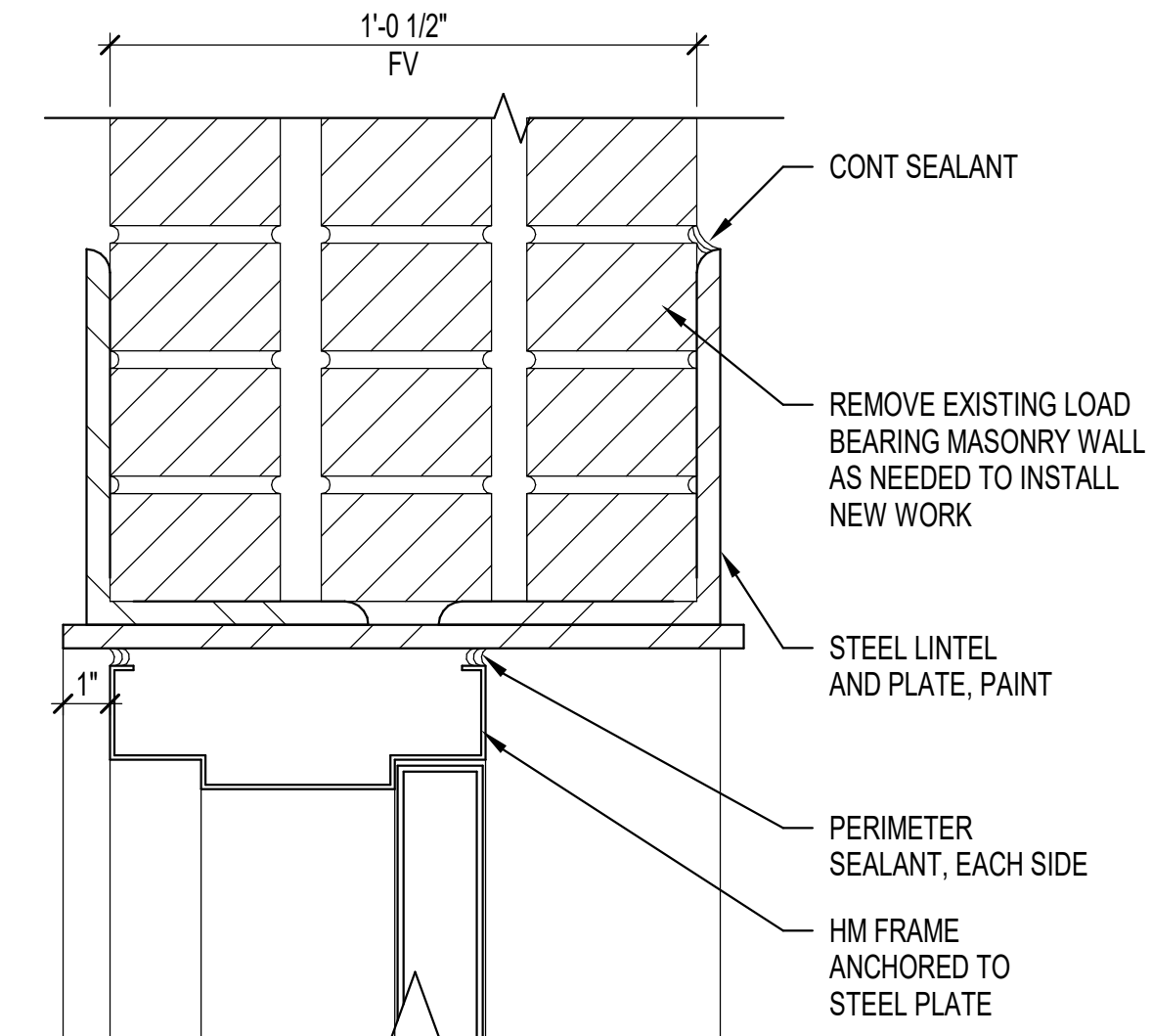
H1 HEAD DETAIL
SCALE: 3"=1'-0"



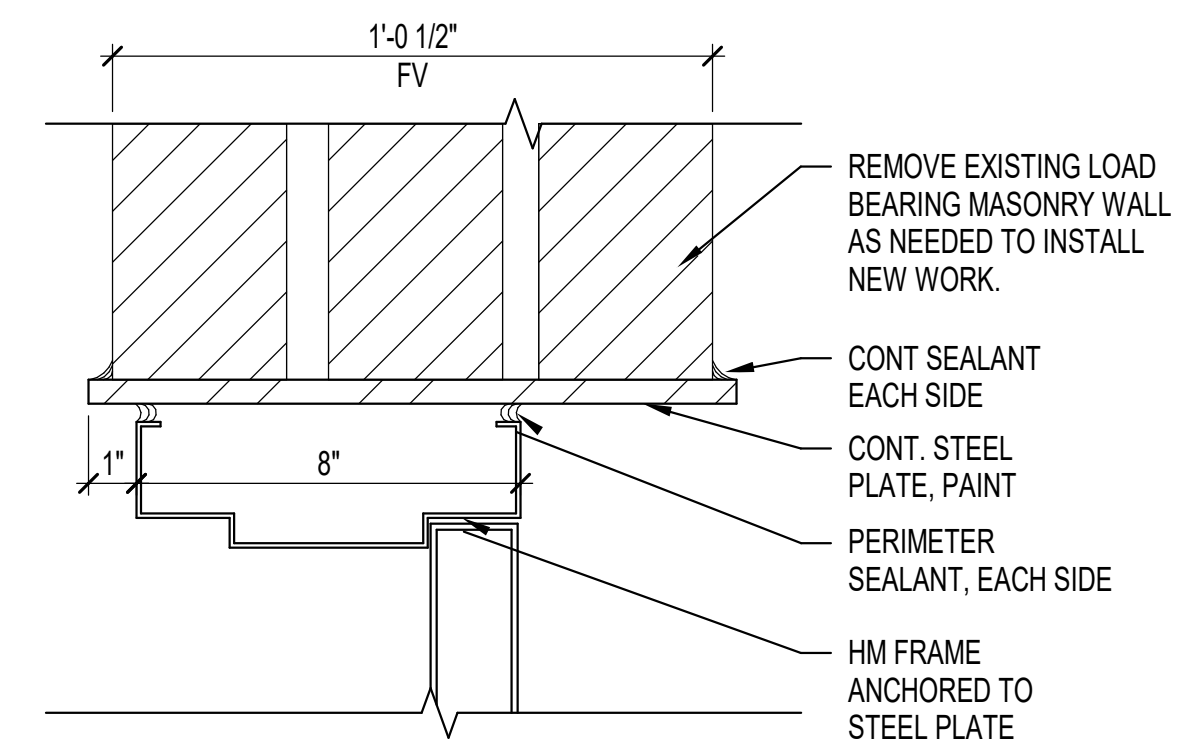
J1 JAMB DETAIL
SCALE: 3"=1'-0"



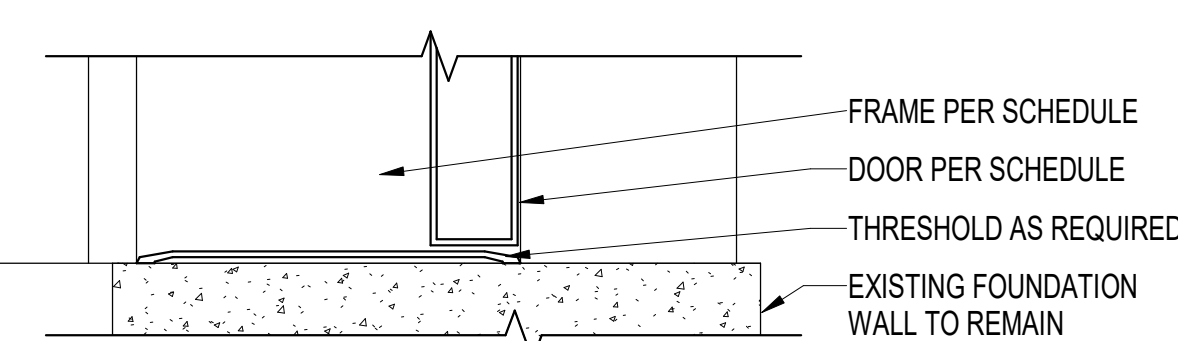
S1 SILL DETAIL
SCALE: 3"=1'-0"



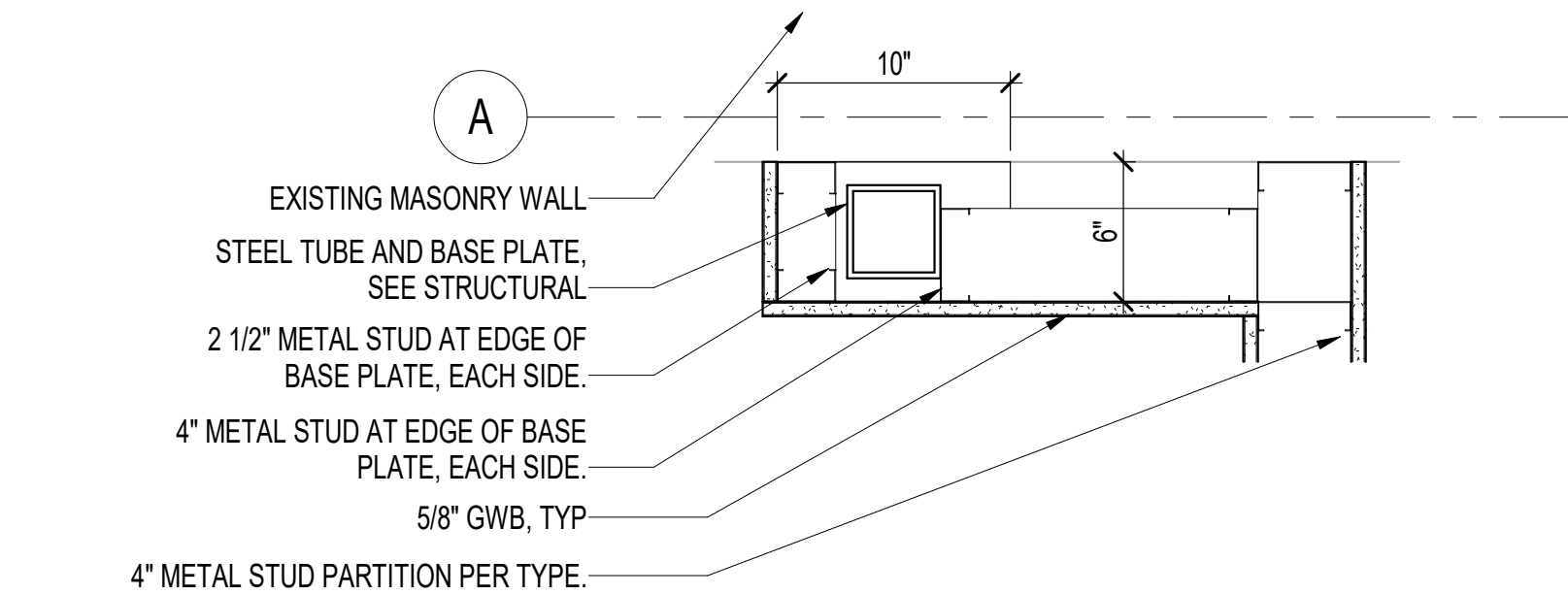
H2 HEAD DETAIL
SCALE: 3"=1'-0"



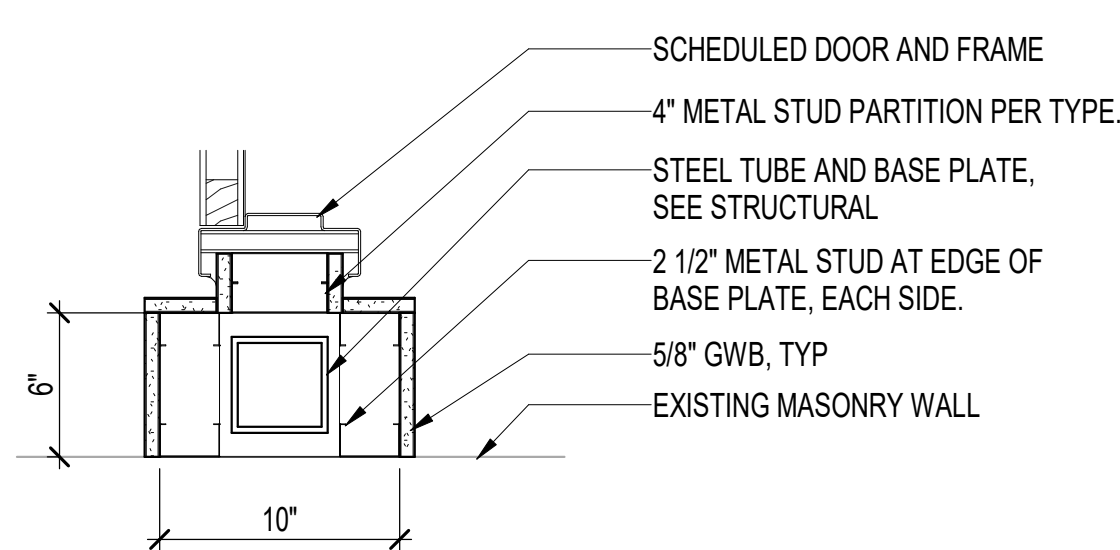
J2 JAMB DETAIL
SCALE: 3"=1'-0"



S2 SILL DETAIL
SCALE: 3"=1'-0"



6 PLAN DETAIL AT BASE PLATE 2
A601 1 1/2" = 1'-0"



5 PLAN DETAIL AT BASE PLATE 1
A601 $1\frac{1}{2}'' = 1'-0''$

[illegible]

CONSULTANT

ARCHITECT/ENGINEER OF RECORD



590 MEANS ST NW
STE. 200
ATLANTA, GA 30318

STAMP



Office of
Construction and
Facilities
Management

VA U.S. Department of
Veterans Affairs

Drawing Title:

DOOR & PARTITION TYPES, SCHEDULES & DETAILS

Approved Project Director

Phase

BID DOCUMENTS

FULLY SPRINKLERED

Project Title:

CORRECT FCA DEFICIENCIES IN BOILER PLANT, BUILDING 14

Location	MONTGOMERY, AL
----------	----------------

Issue Date	09-20-2023
------------	------------

Checked
JH

Project Number

619-20-103

Building Number
14

Drawing Number

A601

ROOM FINISH SCHEDULE										
ROOM NO.	ROOM NAME	FLOOR	BASE	EAST WALL	NORTH WALL	SOUTH WALL	WEST WALL	CEILING	CLG. HT.	REMARKS
1	STAIR	EXIST	EXIST	EXIST	EXIST	EXIST	EXIST	ACT	8'-0"	
2	STAIR	EXIST	EXIST	EXIST	EXIST	EXIST	EXIST	ES/P	22'-4"	
101	COMMON BOILER ROOM	SC	RB	P	P	P	P	ES/P	31'-0"	
102	COMMON SHOP AREA	SC	RB	P	P	P	P	ACT	8'-0"	
103	COMMON EMERGENCY GENERATOR ROOM	SC	RB	P	P	P	P	ES/P	8'-10"	
104	COMMON PUMP ROOM	SC	RB	P	P	P	P	ACT	12'-6"	
201	BOILER MANAGER'S OFFICE	VCT	RB	P	P	P	P	ACT	8'-0"	
202	BOILER OPERATORS OFFICE	VCT	RB	P	P	P	P	ACT	8'-0"	
202A	UNIXES TOILET/SHOWER	PT	PT	PT	PT	PT	PT	ACT	8'-0"	
202B	ENGINEERING STORAGE	SC	RB	P	P	P	P	ES/P	8'-0"	
203	PARTS STORAGE	SC	RB	P	P	P	P	ES/P	8'-0"	
203A	ENGINEERING STORAGE	SC	RB	P	P	P	P	ES/P	13'-0"	
204	ENGINEERING FEED WATER AREA	SC	RB	P	P	P	P	ES/P	9'-4 1/2"	
205	UNIXES LOCKERS	PT	PT	P	P	P	P	ACT	9'-4 1/2"	
206	UNIXES TOILET / SHOWER	PT	PT	PT	PT	PT	PT	ACT	9'-4 1/2"	
207	UPPER MEZZANINE	SC	EXIST	P	P	P	P	ES/P	11'-2"	

ROOM FINISH SCHEDULE GENERAL NOTES:

- A. IN AREAS OUTSIDE THE PROJECT SCOPE WHERE EXISTING FINISHES WILL BE AFFECTED, CONTRACTOR SHALL PATCH, REPAIR AND FINISH WITH MATCHING MATERIALS.
- B. ALL EXISTING AND NEW WALL AND CEILING SURFACES SHALL BE PAINTED UNLESS NOTED OTHERWISE.
- C. ALL FINISH SELECTIONS AND COLOR TO BE APPROVED BY COR AND VA INTERIOR DESIGNER.
- D. PAINT ALL EXISTING AND NEW DOORS.

DOOR & FRAME SCHEDULE												
DOOR NO.	WIDTH	HEIGHT	DOOR TYPE	DOOR MATERIAL	FRAME TYPE	FRAME MATERIAL	HEAD DETAIL	JAMB DETAIL	SILL DETAIL	FIRE RATING	HARDWARE SET	REMARKS
201	3'-0"	7'-0"	A	HM	1	HM	H1	J1	S1	--	HW-3B	PAIRED DOOR
202	3'-0"	7'-0"	A	HM	1	HM	H1	J1	S1	--	HW-3B	
202A	3'-0"	7'-0"	AA	HM	1	HM	H1	J1	S1	--	HW-2D	
204	6'-0"	8'-6"	AA	HM	1	HM	H2	J2	S2	--	HW-E6	
205	3'-0"	7'-0"	A	HM	1	HM	H1	J1	S1	--	HW-2G	
206	3'-0"	7'-0"	A	HM	1	HM	H2 (SIM)	J2 (SIM)	S2 (SIM)	--	HW-2D	

