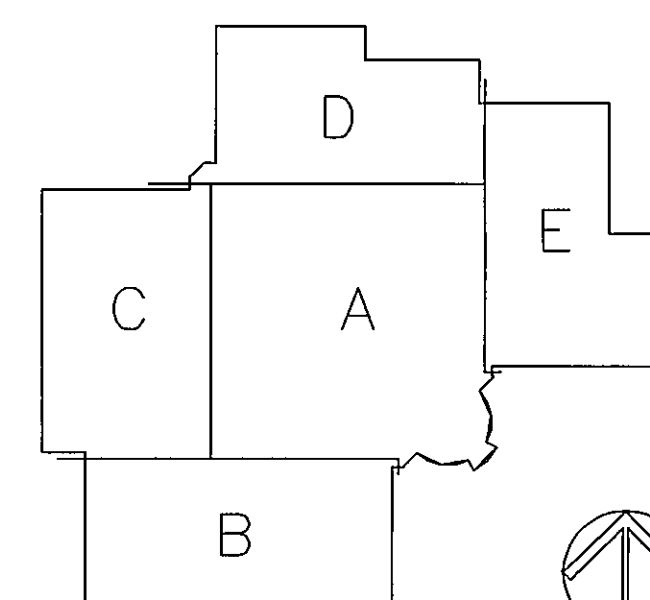


KBJ Architects, Inc.  
AAC00001  
510 North Julia Street  
Jacksonville, Florida 322



■ ■ DENOTES FIRE OR SMOKE  
RATED WALLS. REFER TO  
ENLARGED PLANS FOR  
PARTITION TYPES.

## KEY PLAN



1 FLOOR PLAN  
A1.0 1" = 20'-0"

		Revisions
		Date

Seed	Notes:
------	--------

Growing Title

OVERALL  
FLOOR PLAN

GRAPHIC SCALE  
0' 10' 20'  
SCALE  
1" = 20'-0"

Approved: Area Project Manager

VA Project Number 673-097	Project Title VA OUTPATIENT CLINIC BREVARD COUNTY	Location BREVARD COUNTY, FLORIDA	<div> <input checked="" type="checkbox"/> Checked  <input type="checkbox"/> Missing         </div> <div> Date 7-30-98 </div>
KBJ Project Number 98006	Building Number	Drawing Number	<div> <input type="checkbox"/> Drawn  <input type="checkbox"/> Complete         </div> <div> A1.0 x of xxx </div>

Office of  
Facilities  
Management





# GENERAL NOTES

1. ALL PARTITION TYPES TO BE PARTITION TYPE 14 UNLESS OTHERWISE NOTED SEE SHEET A7.4 FOR PARTITION TYPES
2. SEE SHEET T1.2 FOR SYMBOL KEY AND ABBREVIATIONS
3. SEE SHEET A5.1 FOR DOOR TYPES & DETAILS SEE SHEET A5.2 FOR WINDOW TYPES & DETAILS
4. PROVIDE MOUNTING SUPPORT IN WALLS FOR GRAB BARS @ TOILET AND MILLWORK THROUGHOUT BUILDING. SEE DETAIL 1/A7.4
5. DIMENSIONS ARE FROM FACE OF STUD TO FACE OF STUD OR COLUMN CENTERLINE
6. FOR TYPICAL TOILET ACCESSORIES SEE SHEET A4.3
7. DASHED LINES REPRESENT OWNER FURNISHED EQUIPMENT.

## ZONE A EQUIPMENT SCHEDULE

MARK	ITEM	DESCRIPTION
A1	ELECTRICAL CLOCK	ORNAMENTAL - 120 VOLT, 20 AMP
A2	METAL SHELVES	36"x22"x87" ADJUSTABLE

Notes:	Revisions
	Date

--	--

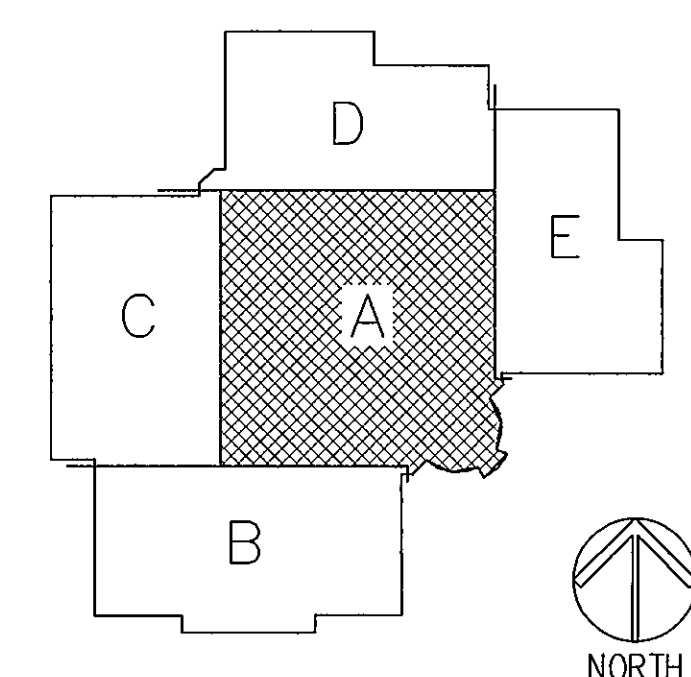
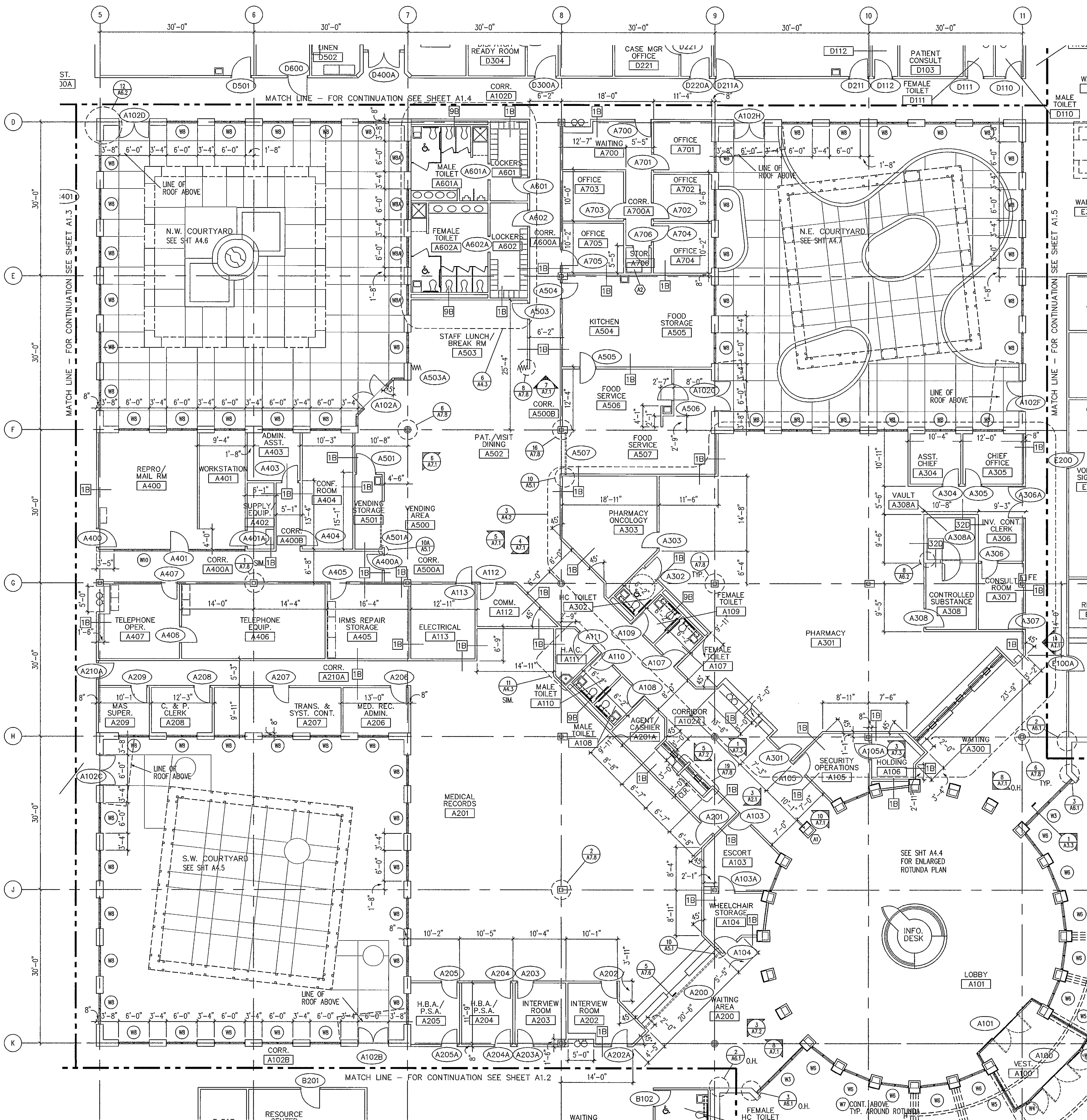
Drawing Title	Notes:
PARTIAL FLOOR PLAN ZONE A	

Project Title	Location	Date
VA OUTPATIENT CLINIC BREVARD COUNTY	BREVARD COUNTY, FLORIDA	7-30-98

VA Project Number	Building Number	Drawing Number
673-097	98006	A1.1

Checked	Drawn	Scale
res	swell	1/8" = 1'-0"

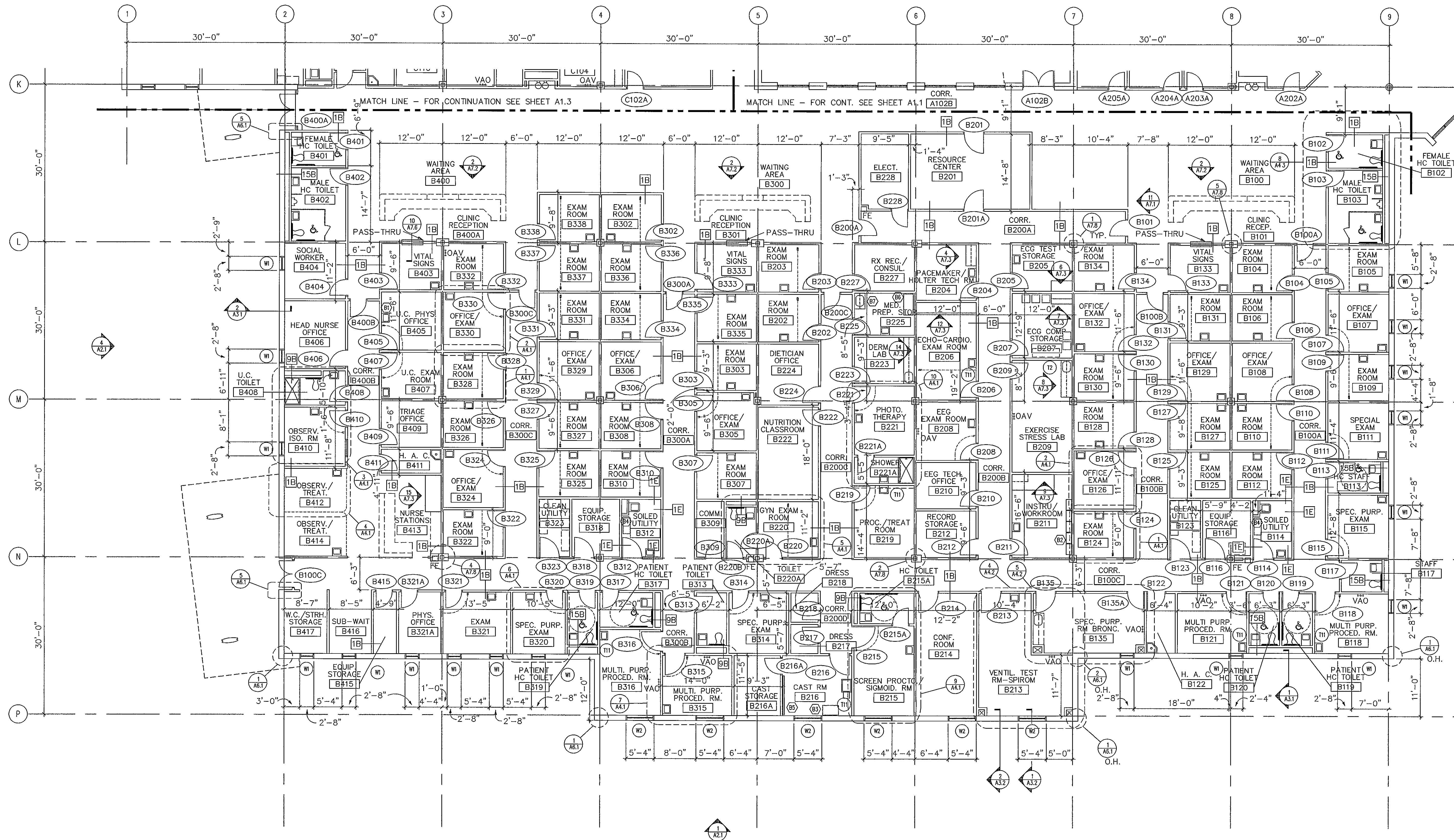
Approved: Area Project Manager
--------------------------------



KEY PLAN

PARTIAL FLOOR PLAN  
1/8" = 1'-0"



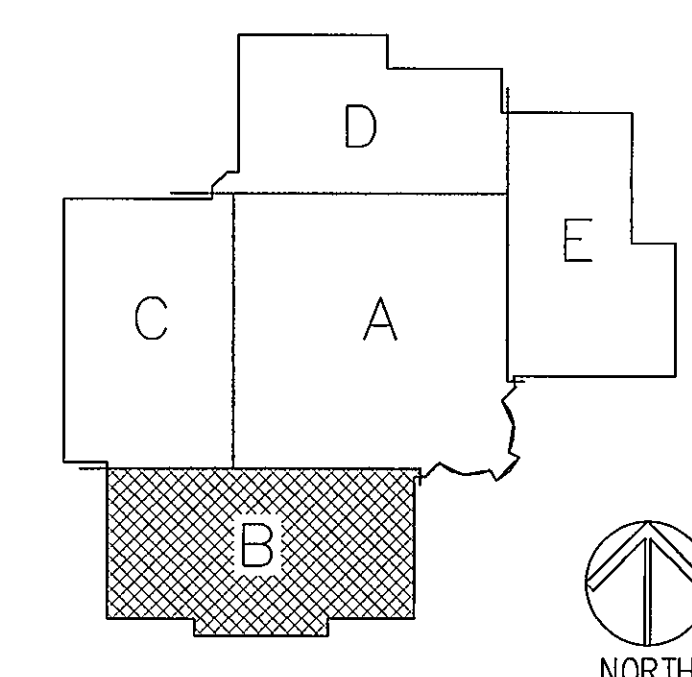


1 PARTIAL FLOOR PLAN  
A1.2 1/8" = 1'-0"

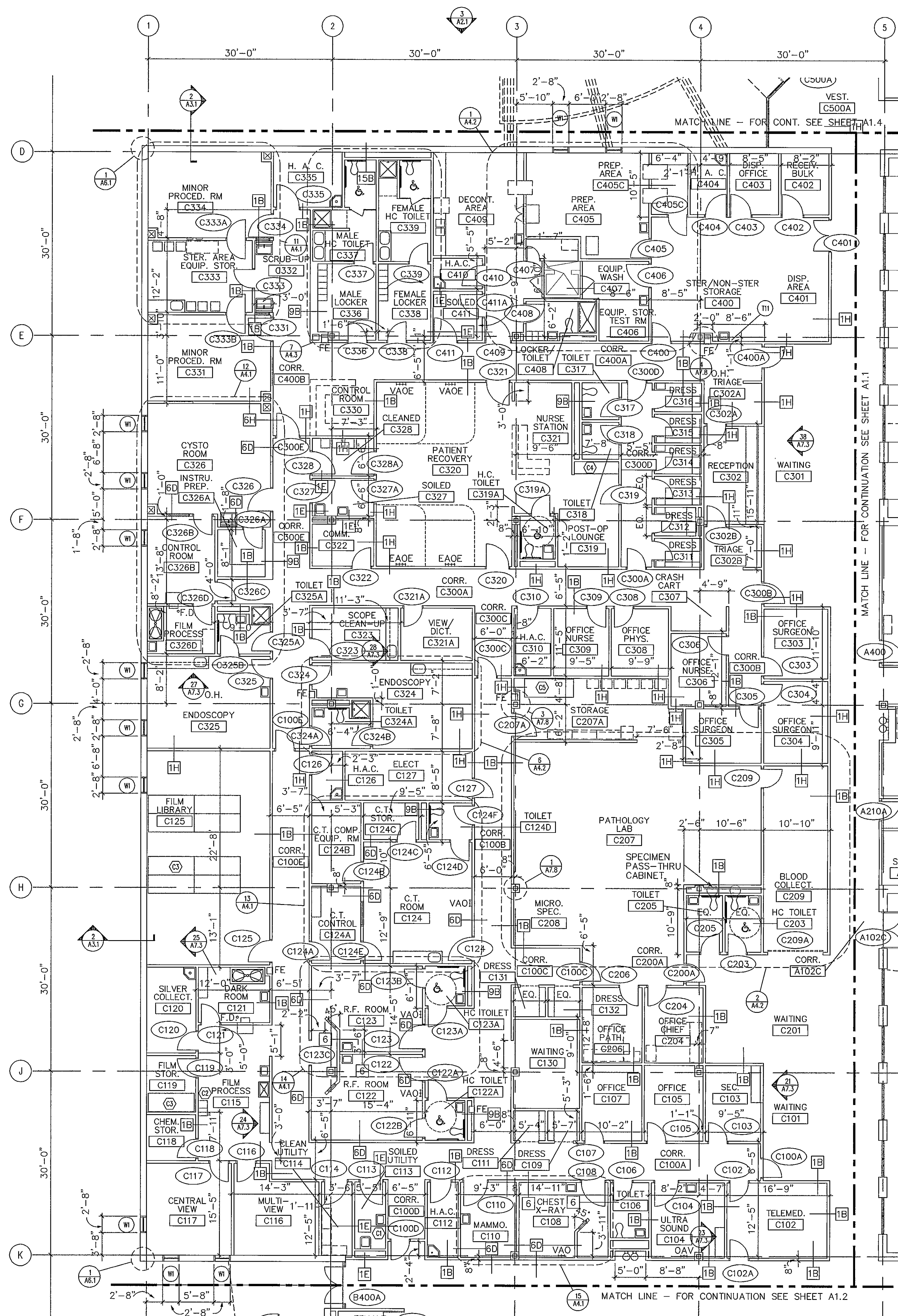
## GENERAL NOTES

1. ALL PARTITION TYPES TO BE PARTITION TYPE 14 UNLESS OTHERWISE NOTED  
SEE SHEET A7.4 FOR PARTITION TYPES
2. SEE SHEET T1.2 FOR SYMBOL KEY AND ABBREVIATIONS
3. SEE SHEET A5.1 FOR DOOR TYPES & DETAILS  
SEE SHEET A5.2 FOR WINDOW TYPES & DETAILS
4. PROVIDE MOUNTING SUPPORT IN WALLS FOR GRAB BARS @ TOILET AND MILLWORK THROUGHOUT BUILDING. SEE DETAIL 1/A7.4
5. DIMENSIONS ARE FROM FACE OF STUD TO FACE OF STUD OR COLUMN CENTERLINE
6. FOR TYPICAL TOILET ACCESSORIES  
SEE SHEET A4.3
7. DASHED LINES REPRESENT OWNER FURNISHED EQUIPMENT.

ZONE B EQUIPMENT SCHEDULE		
MARK	ITEM	DESCRIPTION
B1	VA T45	12"x5" SS SHELF
B2	VA T-6C	24"x12"x58" FLOORSTANDING SHELVES
B3	VA T1A	36"x22"x36" BASE & WALL CABINET
B4	VA HW-534	BEDPAN WASHER/SANITIZER
B5	48"x96" PEGBOARD	HEAVY DUTY(PERFORATED) W/ HANGER
B6	VA T-14A	48"x22"x84" STORAGE CABINET
B7	VA T-22C	36"x24"x36" BASE & WALL CABINET



## KEY PLAN

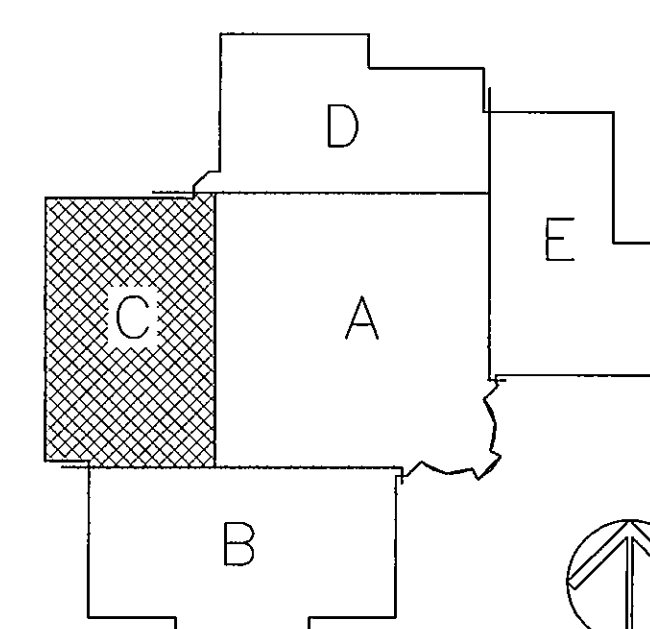


1 PARTIAL FLOOR PLAN  
1/8" = 1'-0"

# GENERAL NOTES

- ALL PARTITION TYPES TO BE PARTITION TYPE 14 UNLESS OTHERWISE NOTED. SEE SHEET A7.4 FOR PARTITION TYPES.
- SEE SHEET T1.2 FOR SYMBOL KEY AND ABBREVIATIONS.
- SEE SHEET A5.1 FOR DOOR TYPES & DETAILS. SEE SHEET A5.2 FOR WINDOW TYPES & DETAILS.
- PROVIDE MOUNTING SUPPORT IN WALLS FOR GRAB BARS @ TOILET AND MILLWORK THROUGHOUT BUILDING. SEE DETAIL 1/A7.4.
- DIMENSIONS ARE FROM FACE OF STUD TO FACE OF STUD OR COLUMN CENTERLINE.
- FOR TYPICAL TOILET ACCESSORIES SEE SHEET A4.3.
- DASHED LINES REPRESENT OWNER FURNISHED EQUIPMENT.

ZONE C EQUIPMENT SCHEDULE		
MARK	ITEM	DESCRIPTION
(C1)	VA T45C	36"x8" SS SHELF
(C2)	VA T-C	15"x18"x36" STEEL LOCKER
(C3)	VA T-9	36"x90" X-RAY FILM BINS
(C4)	VA T-18C	MEDICATION CABINET
(C5)	FREEZER	REFRIGERATED STORAGE



KEY PLAN

**Baker**  
Baker/Mellon Stuart Const  
111 North Orange Avenue  
Suite 625  
Orlando, Florida 32801

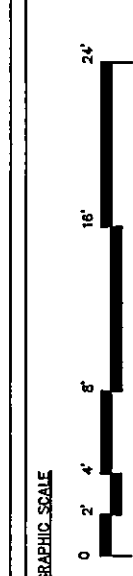
**ARCHITECTS**  
KBj Architects, Inc.  
AAC00001  
510 North Julia Street  
Jacksonville, Florida 322

Revisions	Date

Notes:

Seal

Drawing Title  
PARTIAL FLOOR PLAN  
ZONE C



Approved: Area Project Manager

Project Title  
VA OUTPATIENT CLINIC  
BREVARD COUNTY

Location  
BREVARD COUNTY, FLORIDA

Date  
7-30-98

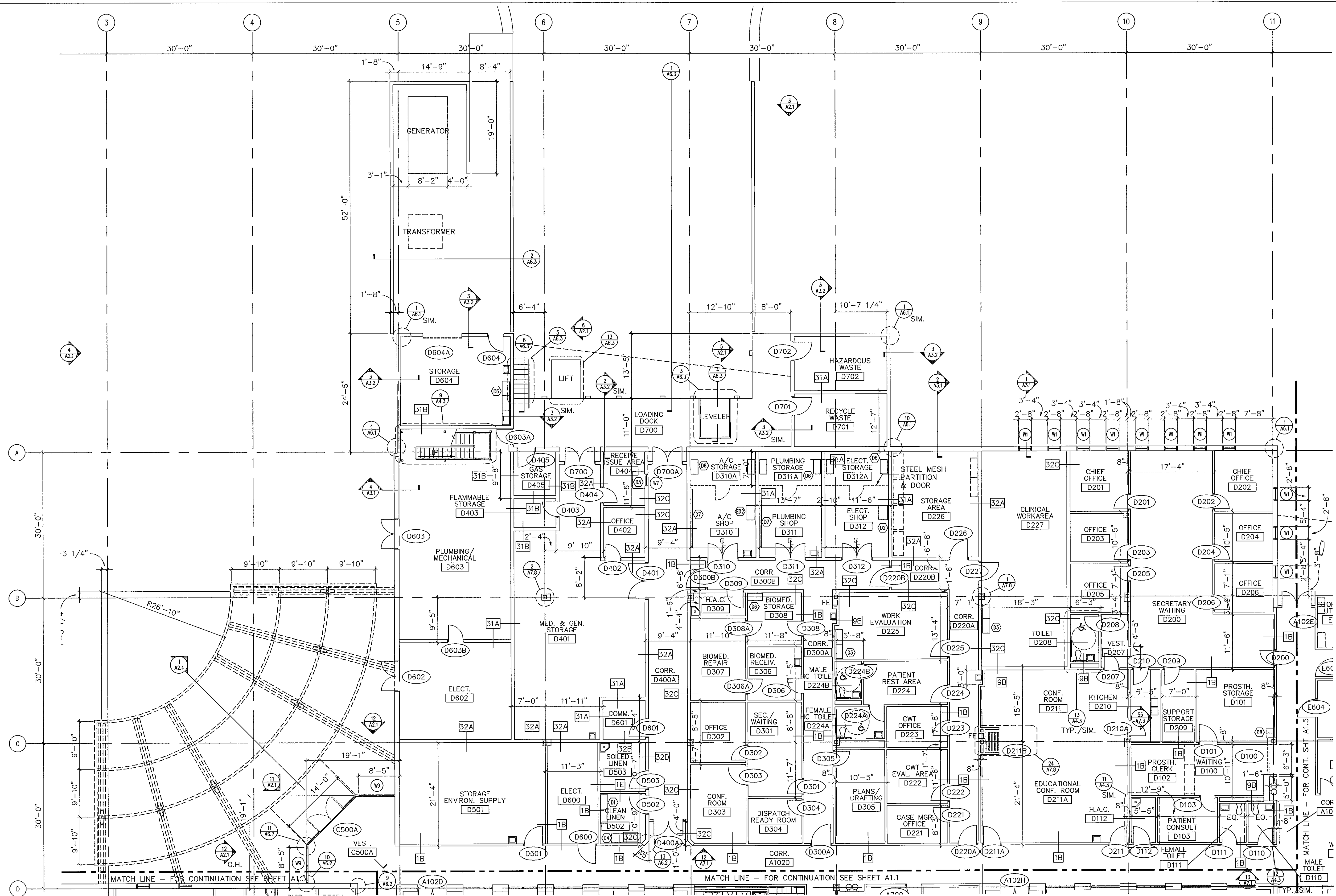
VA Project Number  
673-097

RSJ Project Number  
98006

Building Number  
A1.3

Office of  
Facilities  
Management



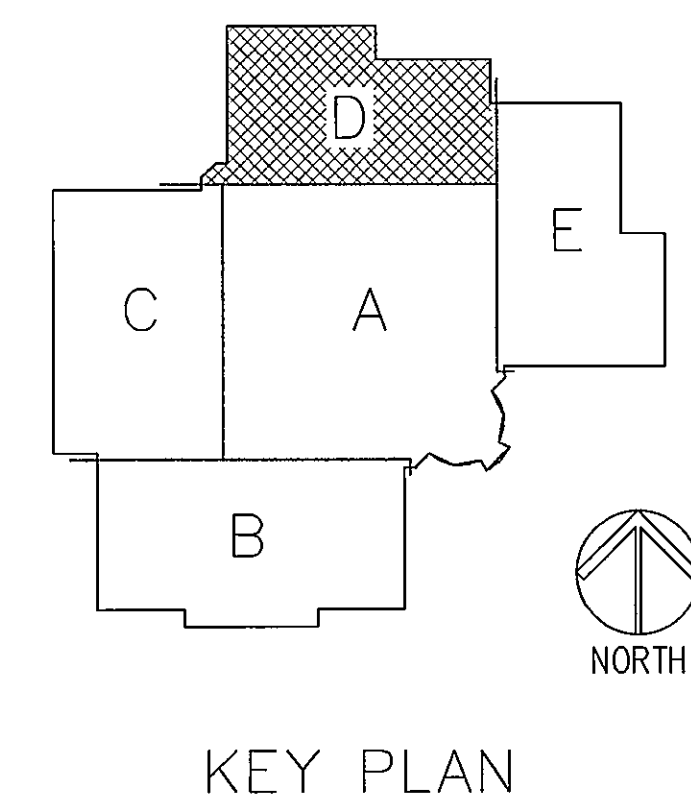


1 PARTIAL FLOOR PLAN  
A1.4 1/8" = 1'-0"

GENERAL NOTES

- ALL PARTITION TYPES TO BE PARTITION TYPE 14 UNLESS OTHERWISE NOTED SEE SHEET A7.4 FOR PARTITION TYPES
- SEE SHEET T1.2 FOR SYMBOL KEY AND ABBREVIATIONS
- SEE SHEET A5.1 FOR DOOR TYPES & DETAILS SEE SHEET A5.2 FOR WINDOW TYPES & DETAILS
- PROVIDE MOUNTING SUPPORT IN WALLS FOR GRAB BARS @ TOILET AND MILLWORK THROUGHOUT BUILDING. SEE DETAIL 1/A7.4
- DIMENSIONS ARE FROM FACE OF STUD TO FACE OF STUD OR COLUMN CENTERLINE
- FOR TYPICAL TOILET ACCESSORIES SEE SHEET A4.3
- DASHED LINES REPRESENT OWNER FURNISHED EQUIPMENT.

ZONE D EQUIPMENT SCHEDULE		
MARK	ITEM	DESCRIPTION
D1	VA T-5B	36"x30"x42" WALL CABINET
D2	VA T-5C	36"x22"x42" WALL HUNG SHELVES
D3	VA T-6A	36"x18"x84" FLOORSTANDING SHELVES
D4	VA T-6E	36"x30"x84" FLOORSTANDING SHELVES
D5	VA T15	42"x34"x31" PLAM. LAM. COUNTER & CAB.
D6	VA T-37	36"x18"x84" FLOORSTANDING SHELVES
D7	24"x144" PEGBOARD	HEAVY DUTY(PERFORATED) W/ HANGERS
D8	VA T-B	12"x21"x72" STEEL LOCKER



Revisions	Date

Notes:

Seal

Drawing Title
PARTIAL FLOOR PLAN ZONE D

Project Title
VA OUTPATIENT CLINIC BREVARD COUNTY

Location
BREVARD COUNTY, FLORIDA

Project Number
673-097

Building Number
98006

Drawing Number
A1.4

Date
7-30-98

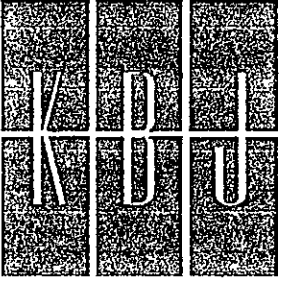
Checked

Drawn

Approved: Area Project Manager

Office of Facilities Management

Department of Veterans Affairs



	Revisions
	Date

Notes:
Scale

Drawing Title	PARTIAL FLOOR PLAN ZONE D - FIRE PROTECTION
Graphic Scale	0' 2' 4' 8' 16' 24'
SCALE: 1/8" = 1'-0"	Approved: Area Project Manager

Project Title	VA OUTPATIENT CLINIC BREVARD COUNTY
Location	BREVARD COUNTY, FLORIDA
Drawn	WP
Checked	NS
Date	7-30-98

VA Project Number	673-097
KBJ Project Number	98006
Building Number	
Drawing Number	F2.4

