

A

B

C

D

E

F

A

B

C

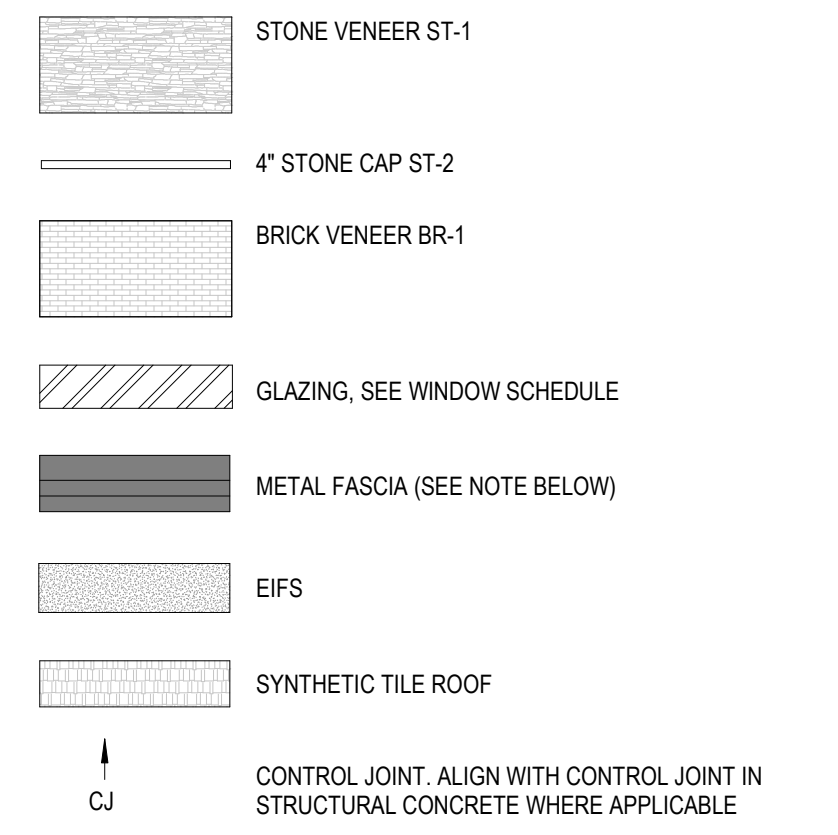
D

E

F

EXTERIOR FINISH LEGEND

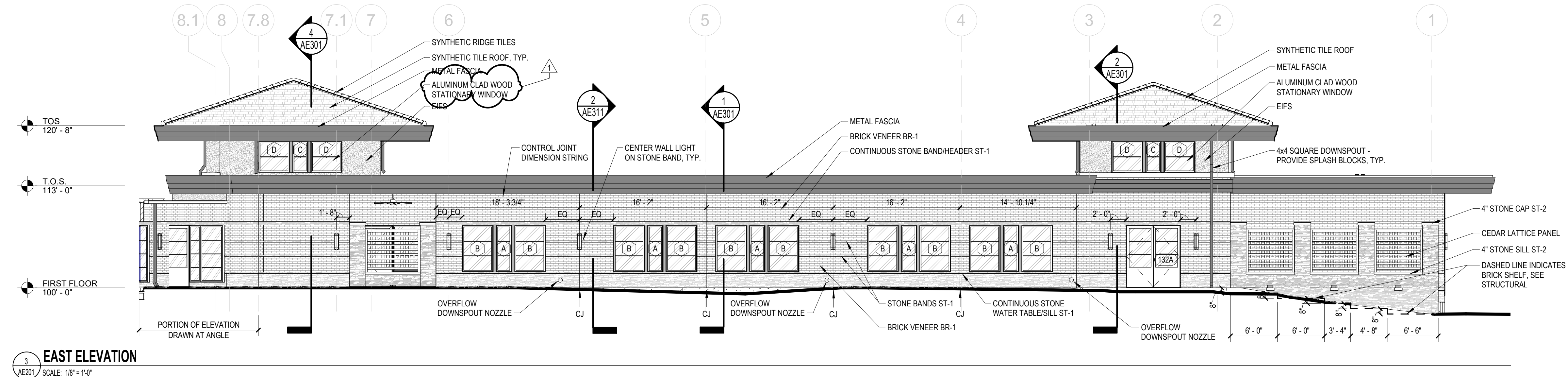
SEE SPECIFICATIONS FOR ADDITIONAL INFORMATION



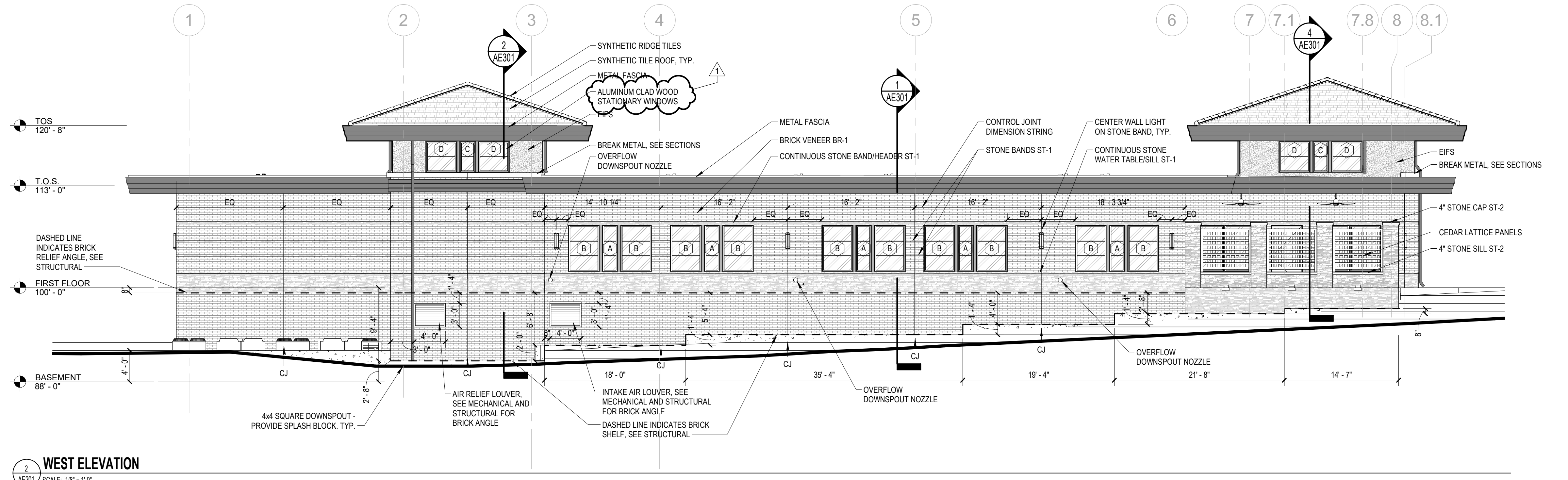
FASCIA NOTE



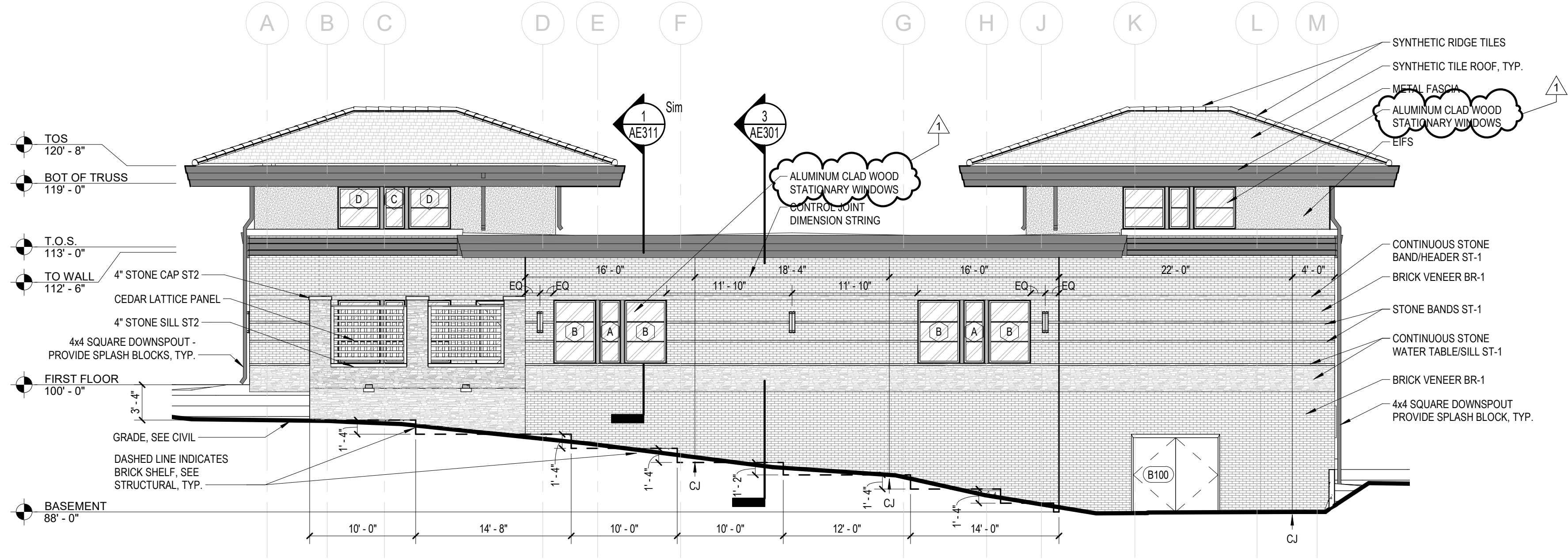
DESIGN INTENT: NEW FASCIA TO MATCH ADJACENT EXISTING BUILDING TO WHICH IT IS CONNECTED, INCLUDING GRAVEL STOPS, CLEATS, METAL GAUGE, ETC. CONTRACTOR SHALL EXAMINE EXISTING CONDITIONS PRIOR TO CONSTRUCTION AND BEST DETERMINE THE MATERIAL AND FINISH TO BE USED ON ADDITION. EXISTING FASCIA PICTURED ABOVE FOR REFERENCE.



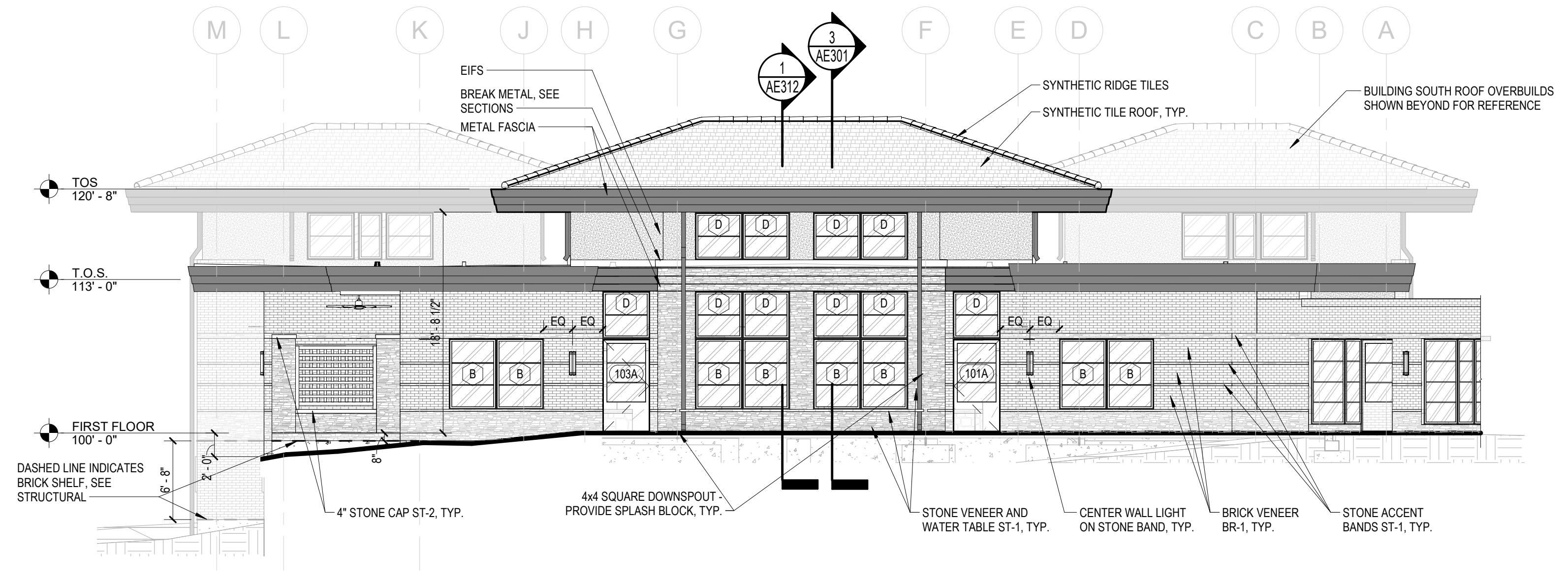
3 EAST ELEVATION  
AE201 SCALE: 1/8" = 1'-0"



2 WEST ELEVATION  
AE201 SCALE: 1/8" = 1'-0"



4 NORTH ELEVATION  
AE201 SCALE: 1/8" = 1'-0"



1 SOUTH ELEVATION  
AE201 SCALE: 1/8" = 1'-0"

002	Revisions:	08/14/2025	Date:

ARCHITECT/ENGINEER OF RECORD

**GUIDON**

**CHARLOTTE ENGINEERS**

CIVIL ENGINEER, ARCHITECT, STRUCTURAL ENGINEER  
GUIDON DESIGN, INC.  
1221 N. PENNSYLVANIA STREET  
INDIANAPOLIS, IN 46202

FIRE PROTECTION, PLUMBING, MECHANICAL, ELECTRICAL ENGINEER  
CHARLOTTE ENGINEERS  
5838 MONROE ROAD  
CHARLOTTE, NC 28212

STAMP

NOT FOR CONSTRUCTION

Office of Construction and Facilities Management

VA U.S. Department of Veterans Affairs

Drawing Title	BUILDING ELEVATIONS
Approved:	

Phase	BID DOCUMENTS
FULLY SPRINKLERED	

Project Title	Construct TDV CLC 12 Beds	Project Number	508-349
Location	180 MARTIN DR, CARROLLTON, GA 30117	Building Number	
Issue Date	12/16/2024	Checked	JF
Drawn	TS	Drawing Number	AE201