

A

E

C

E

F

8/12/2025 11:21:13 AM

Autodesk Docs://22.9003 - VA Atlanta Trink Davis CLC/22.9003 A v22.rvt

VA FORM 08-6231

1

2

3

4

5

6

•

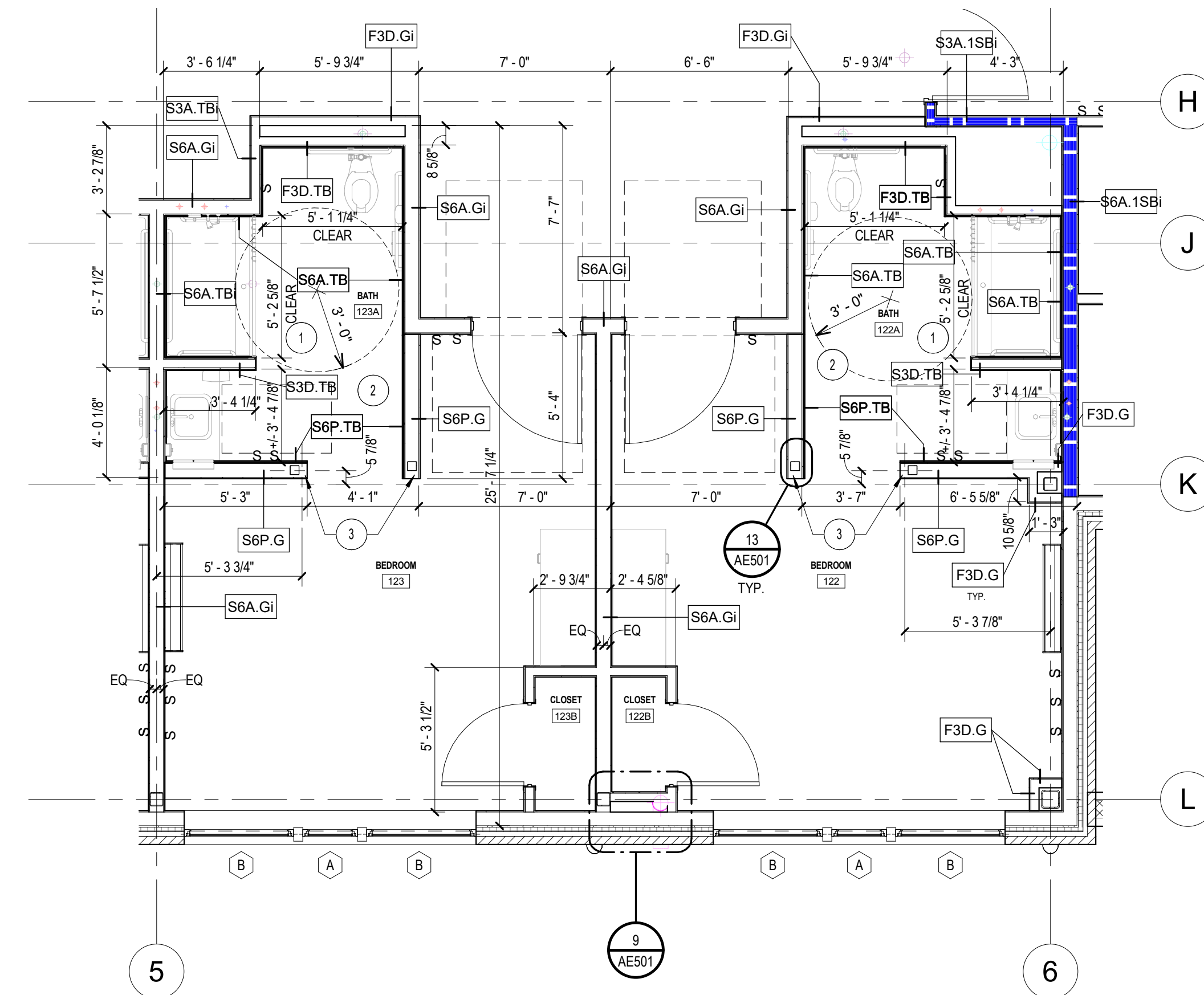
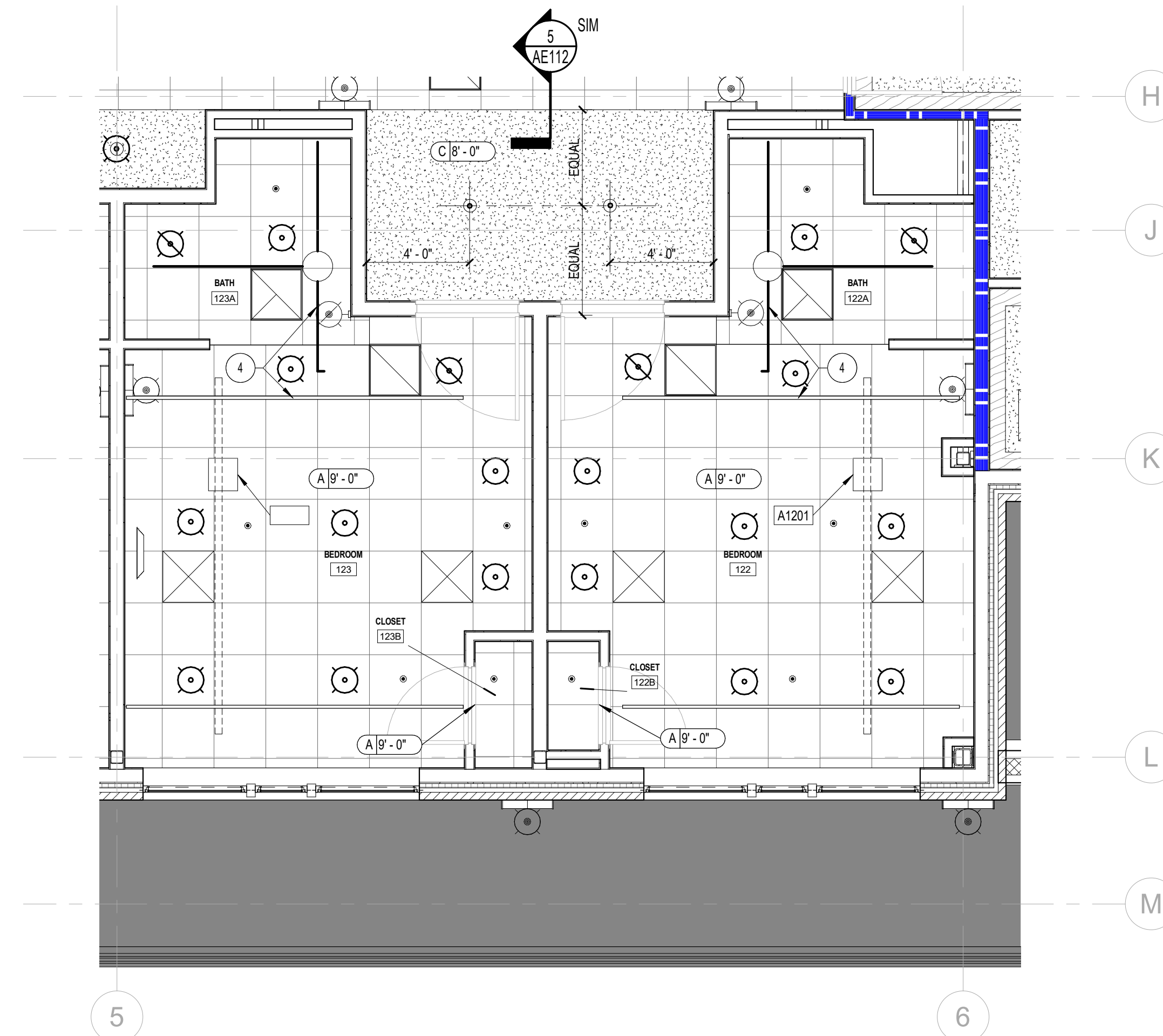
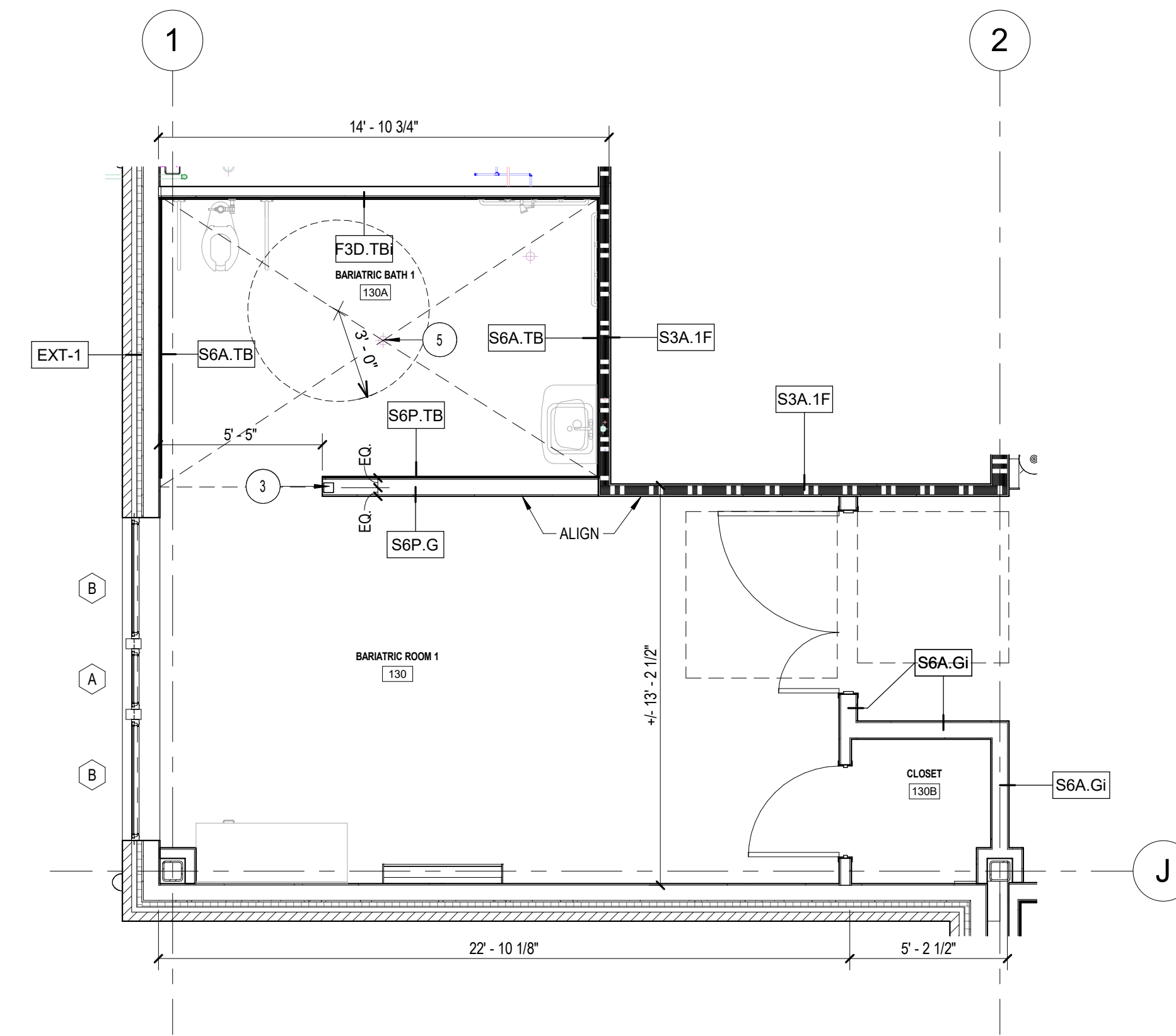
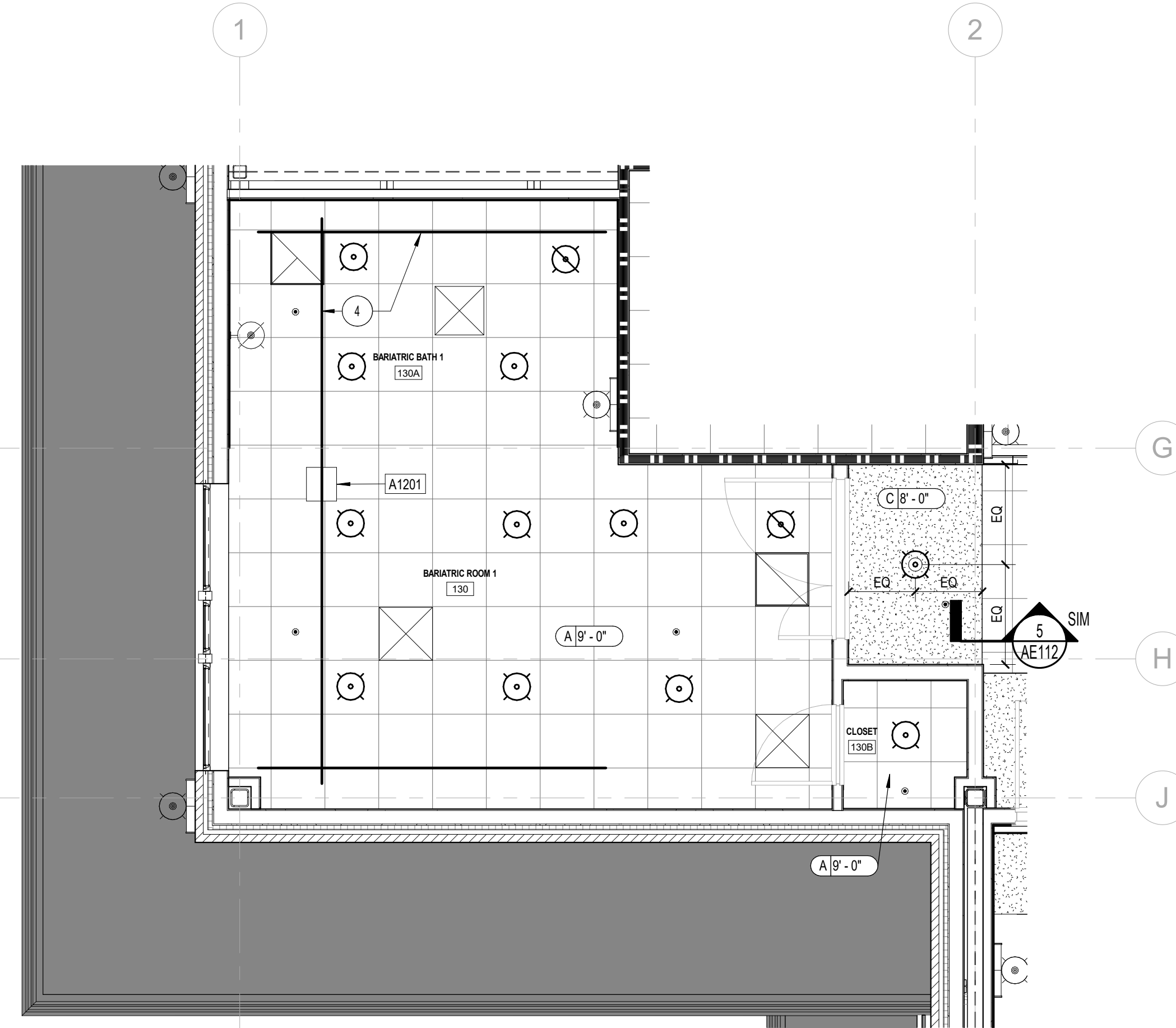
1


!

1

ENLARGED ARCHITECTURAL PLAN NOTES

1. COORDINATE ACTUAL DIMENSIONS WITH SELECTED SHOWER PAN REQUIREMENTS.
2. PROVIDE TILE BACKER BOARD ONLY BEHIND WALL TILE. PROVIDE GWB ABOVE TILE BACKER BOARD IN TOILET/SHOWER ROOMS.
3. STEEL COLUMN FOR PARTIAL WALL BRACING. SEE STRUCTURAL.
4. LINES INDICATE RAILS FOR CEILING MOUNTED PATIENT LIFT. SEE SPECIFICATION SECTION 1173.00, STRUCTURAL AND ELECTRICAL DRAWINGS FOR FURTHER INFORMATION. B.O.B. - JACO
5. FLOOR DRAIN, SEE PLUMBING DRAWINGS. SLOPE FLOOR TO DRAIN, SEE STRUCTURAL DRAWINGS.



| | |
|---|------------|
| | |
| | |
| | |
| | |
| | |
| | |
| | |
| | |
| 002  | 08/14/2025 |
| Revisions: | Date: |

| | | | | | | | | | | | | | | | | | |
|---|--|--|--|-------------------------|--|---|--|---------------------------------|--|--------------------------|--|----------------------------|--|---|--|----------------|--|
| CONSULTANT | | ARCHITECT/ENGINEER OF RECORD | | STAMP | | Drawing Title | | Phase | | Project Title | | Project Number | | | | | |
| Consultant: CHARLOTTE ENGINEERS 5838 MONROE ROAD CHARLOTTE, NC 28212 704-531-3000 | | A/E: GUIDON DESIGN, INC. 1221 N. PENNSYLVANIA STREET INDIANAPOLIS, IN 46202 317.800.6388 | | NOT FOR CONSTRUCTION | | Office of Construction and Facilities Management | | ENLARGED ARCHITECTURAL PLANS | | BID DOCUMENTS | | Construct TDVV CLC 12 Beds | | 508-349 | | | |
| | | | | | | | | | | | | Approved: | | Location 180 MARTIN DR, CARROLLTON, GA 30117 | | Drawing Number | |
| | | | | | | VA U.S. Department of Veterans Affairs | | FULLY SPRINKLERED | | Issue Date 12/16/2024 | | Checked JF | | Drawn TS | | AE402 | |