



## **Shelby County EMA-IT Building Project**

### **ADDENDUM NO. 6**

Date: December 3, 2025

RE: Shelby County EMA-IT Building Project Bid

BID DATE AND TIME:

**CHANGED to Tuesday, December 9, 2025 at 2:00 p.m. CST**

Location for the bid opening remains the Shelby County Manager's Office, located at 200 West College Street, Room 123, Columbiana, Alabama, 35051

\*\*\*\*\*

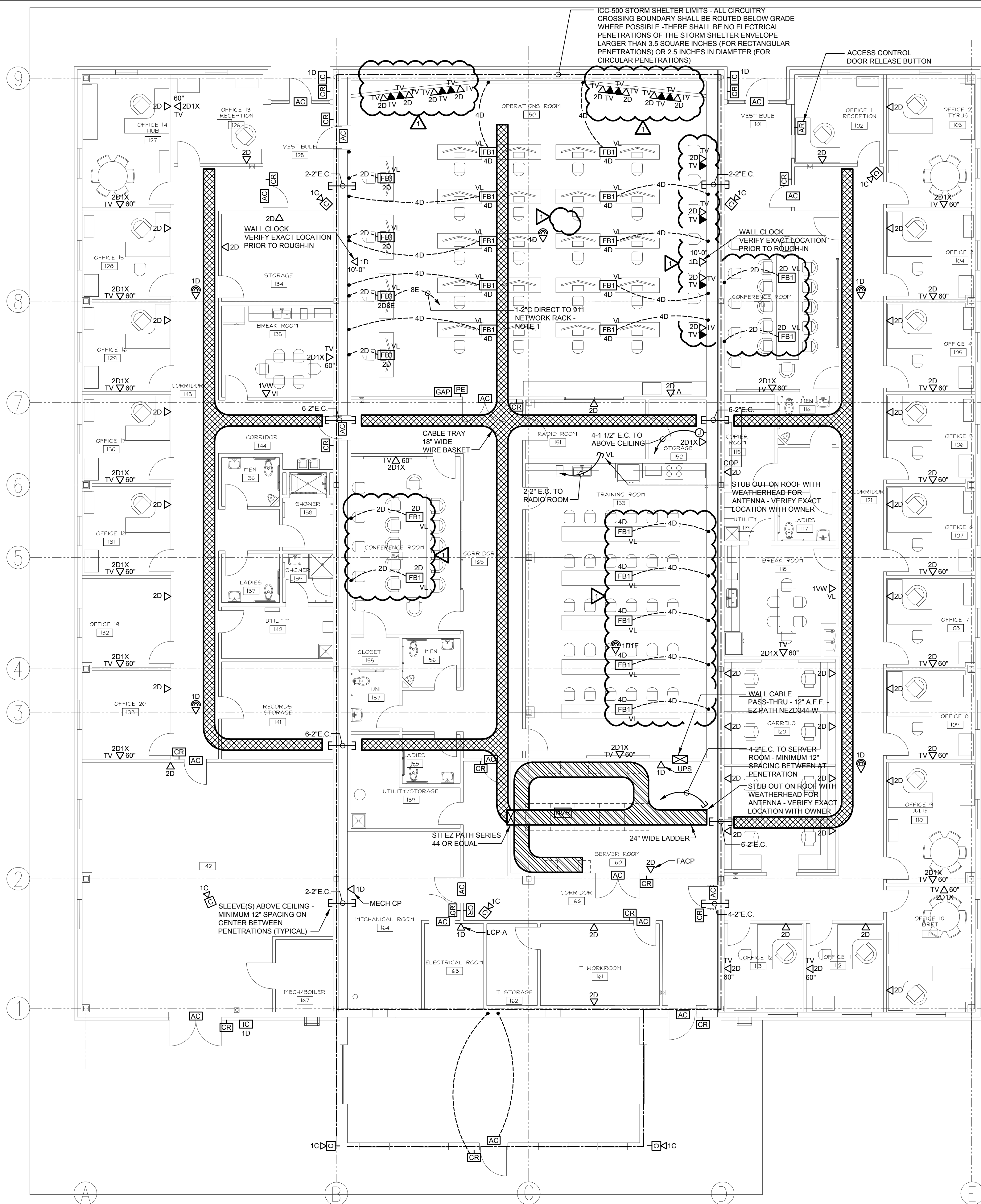
#### **Project Manual, Plans and Specifications:**

- See attached revised Sheet E6
  - This revision clarifies the required cabling to the identified locations

#### **Substitution Request:**

- 28 3100 Fire Alarm System – 2.15 Fire Alarm System Manufacturer - Honeywell Farenhyt – NOT APPROVED

**End of Addendum**



## AUXILIARY PLAN

SCALE : 1/8" = 1'-0"

### PLAN NOTES

- HOME RUN CONDUIT FOR 911 RACK CABLING (NOTED AS 'E') BELOW GRADE UNTIL ENTERING SERVER ROOM. TERMINATE CONDUIT AT CABLE TRAY. CABLING SHALL BE INSTALLED IN CONDUIT EXCEPT WITHIN SERVER ROOM.

### CABLE TRAY SYSTEM NOTES

- CABLE TRAY SHALL BE WIRE BASKET TYPE AND A MINIMUM OF 4" DEEP AND WIDTH AS SHOWN UNLESS NOTED OTHERWISE - TRAY WITHIN SERVER ROOM SHALL BE 24" WIDE LADDER TYPE.
- CABLE TRAY SHALL ONLY BE USED FOR LOW VOLTAGE (LESS THAN 50V) AUXILIARY SYSTEM CABLING. ALL OTHER CABLING AS WELL AS ALL FIRE ALARM CABLES, SHALL BE INSTALLED IN SEPARATE RACEWAY PER SPECIFICATIONS.
- CONDUIT TO TRAY ADAPTERS AND END BUSHINGS SHALL BE USED AT ALL CONDUIT TERMINATIONS.
- ALL CABLE TRAY SECTIONS SHALL BE BONDED TO A CONTINUOUS #6 AWG GROUND CONDUCTOR RUN ALONG TRAY PER NEC REQUIREMENTS. CONNECT TO GROUNDING BUSHINGS ON CONDUIT AT TRAY TERMINATIONS. BOND SYSTEM TO GROUND BUS AT IDF.
- FIELD COORDINATE EXACT CABLE TRAY LOCATION WITH PIPING, EQUIPMENT, DUCTWORK, STRUCTURE, LIGHTING, ETC. AND WITH OTHER TRADES PRIOR TO ORDERING. PROVIDE VERTICAL & HORIZONTAL BENDS AT REQUIRED. PROVIDE A MINIMUM OF 4" BETWEEN TOP OF TRAY AND ANY OBSTRUCTIONS AND A MINIMUM OF 6" ABOVE ACCESSIBLE CEILING TO ALLOW ACCESS.
- THIS PLAN DOES NOT ATTEMPT TO SHOW ALL REQUIRED SLEEVES. INTENT IS TO PROVIDE A CONTINUOUS PATHWAY FROM EACH IDF ALONG INDICATED SYSTEM PATH. PROVIDE CABLE TRAY SLEEVES WITH SEALING COMPOUND AT ALL CABLE TRAY WALL PENETRATIONS TO LIMIT AIR PASSAGE. WHERE TRAY PENETRATES A FIRE/SMOKE ASSEMBLY, PROVIDE STI EZ-PATH FIRE RATED PATHWAY SUCH THAT UL LISTING OF MEMBRANE IS MAINTAINED.



JACKSON,  
RENFRO  
& ASSOCIATES, INC.  
ELECTRICAL ENGINEERING & DESIGN  
31 INVERNESS CENTER PKWY • SUITE 300 • BIRMINGHAM, AL • 35242

DAVID ARENDALL, PE  
david@jraee.com  
(205) 336-7117  
(P) 205-995-1078  
JRA JOB NO. 225128  
ELECTRICAL ENGINEERING & DESIGN

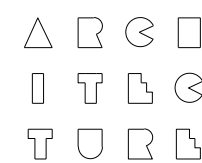
REVISIONS	BY
ADDENDUM 6	DRA

DRAWINGS COPYRIGHT © 2025  
ALL RIGHTS RESERVED  
Stephen Coker Architect LLC



Not Valid for Construction  
without Registration Seal

Shelby County  
EMA - IT FACILITY  
260 - McDow Road  
Shelby County, Alabama 35051



Stephen  
Coker  
Architect  
LLC

1000 Glen View Road  
Birmingham, Alabama 35222

Phone 205/595-0021

E-mail  
steve@cokerarch.com

DRAWING DATE 10-27-2025  
DRAWN BY JR  
PROJECT NO 250407

## AUXILIARY PLAN

SHEET NO

E6

6 OF 17 SHEETS