

February 3, 2026

ADDENDUM NO. 2

Tallapoosa County E911  
Addition to the Tallapoosa County Jail Facility  
Dadeville, Alabama

This Addendum No. 2, to the plans and specifications, dated 8 January 2026, consists of Seven (7) Pages.

Item No. 1: Refer to Specification 03 41 01 Precast Prestressed Hollow Core Slabs, Section 2.3

- A. **CLARIFICATION:** 1/8" thick Korolath Engineered Multipolymer plastic strips designed for use with prestressed concrete are acceptable for use in this project.

Item No. 2: Refer to Specifications, Section 07 11 00 Emulsion Type Dampproofing Coating / 07 13 01 Sheet Waterproofing:

- A. **CLARIFICATION:** Dampproofing on exterior walls above grade shall be as indicated by Specification Section 07 11 00.
- B. **CLARIFICATION:** Dampproofing on exterior walls below grade shall be as indicated by specification 07 13 01 – Sheet Waterproofing.
- C. Specification Section 07 13 01 is hereby a part of the Contract Documents.

Item No. 3: Refer to Specifications 07 71 13 Sheet Metal Coping.

- A. **CLARIFICATION:** Shop fabricated Coping is acceptable.

Item No. 4: Refer to Specifications, Section 08 71 00 Door Hardware:

- A. **CLARIFICATION:** Architect selection of the specified locks & latches and the approved equals fulfill project needs. Architect will consider a formal door hardware substitution request using the specified form and when accompanied by supporting catalog data for evaluation of products.

Item No. 5: Refer to Plans, C0.1 Existing Site / TOPO

- A. **DELETE:** C0.1 in its entirety and replace with C0.1 SD-1. Drawing scale is 1" = 20' – 0".

Item No. 5: Refer to Plans A2.1 Detail A – Toilet / Locker 102

- A. **CLARIFICATION:** Schluter or approved ceramic tile is acceptable for bullnose base transition units.

Item No. 6: Refer to Plans, Sheet A3.1, Door Schedule/Details: "Bullet Resistant" Remark No. 1:

A. **CLARIFICATION:**

1. Disregard Remark Note No. 1 in its entirety.
2. Doors 101, 103 shall be FEMA rated.
3. Door 108 does not have FEMA or "bullet resistant" rating. Furnish and install in accordance with specifications / drawings.
4. Door 102 does not have FEMA rating or "bullet resistant" rating. Furnish and install per specifications / drawings.

B. **CLARIFICATION:** All Interior Wood Doors shall be stained birch as indicated in specifications.

Item No. 7: Refer to Plans, Sheet A8.1, Reflected Ceiling Plan and Roof Plan:

A. **CLARIFICATION:** Finish floor reference 0'-0"; Conc Sub Floor – 1'-2" REF FF.; Bottom of Core Floor 11'-4" AFF.

Item No. 8: Refer to Plans, Sheet P3.1, Water and Gas Plumbing Plan:

A. **CLARIFICATION:** Refer to Sheet P3.1 Water and Gas Plumbing Plan for domestic water service size and connection to main.

Item No. 9: Refer to Plans, Sheet SP2.1, Fire Sprinkler Plumbing Plan:

A. **CLARIFICATION:** Refer to Sheet SP2.1 Fire Sprinkler Plumbing Plan for fire main sizing, routing, and connection to existing.

Item No. 10: Refer to Plans, Sheet SP2.1 / SP2.1, Fire Sprinkler Plumbing Plan Notes and Details / Fire Sprinkler Plumbing Plan:

A. **SUBSTITUTION:** Siemen Sihorix is hereby accepted in strict conformance of the Contract Documents.

END OF ADDENDUM NO. 2

TALLAPOOSA COUNTY E911 ADDITIONS TO THE TALLAPOOSA COUNTY JAIL FACILITY  
DADEVILLE, ALABAMA

DIVISION 7 THERMAL AND MOISTURE PROTECTION  
Section 07 13 00: Sheet Waterproofing

PART 1 - GENERAL

1.1 RELATED DOCUMENTS

- A. Drawings and general provisions of Contract, including General and Supplementary Conditions apply to this Section.

1.2 SUMMARY

- A. This Section includes sheet membrane waterproofing systems.
- B. Types of sheet waterproofing specified in this Section include the following:
  - 1. Bituminous sheet waterproofing, premolded.
- C. Foundation drainage system is specified in a Division 2 Section.

1.3 SYSTEM PERFORMANCE

- A. General: Provide sheet waterproofing products, insulation protection board, and associated water stop, bulbs and other devices that have been produced and installed to establish and maintain continuous watertight seals.

1.4 SUBMITTALS

- A. General: Submit the following according to Conditions of Contract.
- B. Product data and general recommendations from waterproofing materials manufacturer for types of waterproofing required.
  - 1. Certification by waterproofing materials manufacturer that products supplied comply with local VOC regulations.
- C. Samples of sheet membrane waterproofing and auxiliary materials mounted on plywood, as requested by Architect.

1.5 QUALITY ASSURANCE

- A. Manufacturer's Qualifications: Obtain primary waterproofing materials of each type required from a single manufacturer to the greatest extent possible. Provide secondary materials only as recommended by manufacturer of primary materials.
- B. Installer: A firm with not less than five waterproofing projects similar to requirements for this Project with satisfactory in-service performance and which is acceptable to primary waterproofing materials manufacturer.

TALLAPOOSA COUNTY E911 ADDITIONS TO THE TALLAPOOSA COUNTY JAIL FACILITY  
DADEVILLE, ALABAMA

- C. Preinstallation Conference: Prior to installing waterproofing and associated work, meet at Project site with Installer of each component of associated work, inspection, and testing agency representatives (if any), and installers of work requiring coordination with waterproofing work. Review material selections and procedures to be followed in performing work. Notify Architect at least 48 hours before conducting meeting.

## 1.6 PROJECT CONDITIONS

- A. Substrate: Proceed with work after substrate construction, openings, and penetrating work have been completed and areas are free of standing or running water, ice, and frost. Verify that concrete is dry, smooth, and free from sharp or ragged out-angles, honeycombing, rock pockets, depressions, and projections.
- B. Weather: Proceed with waterproofing and associated work only when existing and forecasted weather conditions will permit work to be performed in accordance with manufacturers' recommendations and warranty requirements.

## 1.7 WARRANTY

- A. Warranty: Submit a written warranty executed by the manufacturer, agreeing to repair or replace sheet membrane waterproofing that fails in materials or workmanship within specified warranty period.
  - 1. Warranty Period: Five years from date of Substantial Completion.
- B. The warranty shall not deprive the Owner of other rights the Owner may have under other provisions of the Contract Documents and will be in addition to and run concurrent with other warranties made by the General Contractor under requirements of the Contract Documents.

## PART 2 - PRODUCTS

### 2.1 BITUMINOUS SHEET WATERPROOFING

- A. General: Premolded 7-ply membrane consisting of a plasmatic matrix encased in fortified bitumen and topped by a weather-coated, inert reinforcing ply. Below the core is a reinforcing carrier sheet to which is bonded a flexible polymeric surface of 62.5-mil thickness covered by a nonstick release paper. Water vapor transmission rating of 0.00 grains/ (hr. x sq. ft.) (ASTM E 96, Method B).
  - 1. MELNAR, W.R. Meadows, Inc. or equal

### 2.2 AUXILIARY MATERIALS

- A. Adhesives and Joint Tape: Provide types of adhesive compound and tapes recommended by waterproofing sheet manufacturer for bonding to substrate (if required), for waterproofing seams in membrane, and for waterproofing joints between membrane and flashings, adjoining surfaces, and projections through membrane.
- B. Primers: Provide type of concrete primer recommended by manufacturer of sheet waterproofing material for applications required.

TALLAPOOSA COUNTY E911 ADDITIONS TO THE TALLAPOOSA COUNTY JAIL FACILITY  
DADEVILLE, ALABAMA

- C. Flashing Materials: Except as otherwise indicated, provide types of flexible sheet material for flashing as recommended by waterproofing sheet manufacturer.
- D. Protection Board: Provide type of protection board recommended by waterproofing sheet manufacturer. Include adhesives recommended by manufacturer.

### PART 3 - EXECUTION

#### 3.1 PREPARATION

- A. General: Comply with manufacturer's instructions for preparing surface.
- B. On concrete decks, immediately before placing waterproofing sheet, grind or abrasive-blast surface lightly to remove projections that might penetrate sheet and curing compounds that would interfere with fully bonded systems. Clean deck of loose material by brooming and vacuuming.
- C. On vertical foundation walls chip off projections where necessary to properly place and adhere waterproofing sheet.
- D. Apply primer to substrate surfaces at rate recommended by manufacturer of primary waterproofing materials. Prime only area that will be covered by waterproofing membrane in same working day. Reprime areas not covered by waterproofing membrane within 24 hours.

#### 3.2 INSTALLATION

- A. Comply with manufacturer's instructions for handling and installing sheet waterproofing materials.
- B. Coordinate installing waterproofing materials with associated work to provide complete system complying with combined recommendations by manufacturers and installers involved in Work. Schedule installation to minimize exposure of sheet waterproofing materials.
- C. Seal projections through membrane and seal seams. Bond to vertical surfaces and also, where shown or recommended by manufacturer, bond to horizontal surfaces.
- D. Top Edge Seal: For vertical and sloped-wall membrane, finish in reglet (where provided); otherwise finish under flashing or under masonry in joint. Caulk exposed edges with mastic or sealant.
- E. Expansion Joints: Install joint filler with protruding rounded surface, as recommended by manufacturer.
  - 1. Apply continuous 8-inch-wide strip of membrane on joint, followed by membrane application.
- F. Coat exposed areas of sheet and flashing materials. Comply with sheet manufacturer's recommendations for applying and curing the coating.
- G. Protection Board: Install protection board over completed membrane, complying with manufacturer's recommendations for both waterproofing sheet and protection course materials.

### 3.3 FIELD QUALITY CONTROL

- A. In-Place Testing: Before completed membranes on horizontal surfaces are covered by protection course or other work, test for leaks with a 1-inch depth of water maintained over the high point for 24 hours. Repair any leaks observed; repeat test and repairs until no leaks remain.

### 3.4 CLEANING

- A. General: After completion, remove any masking materials and stains from exposed surfaces caused by waterproofing installation.

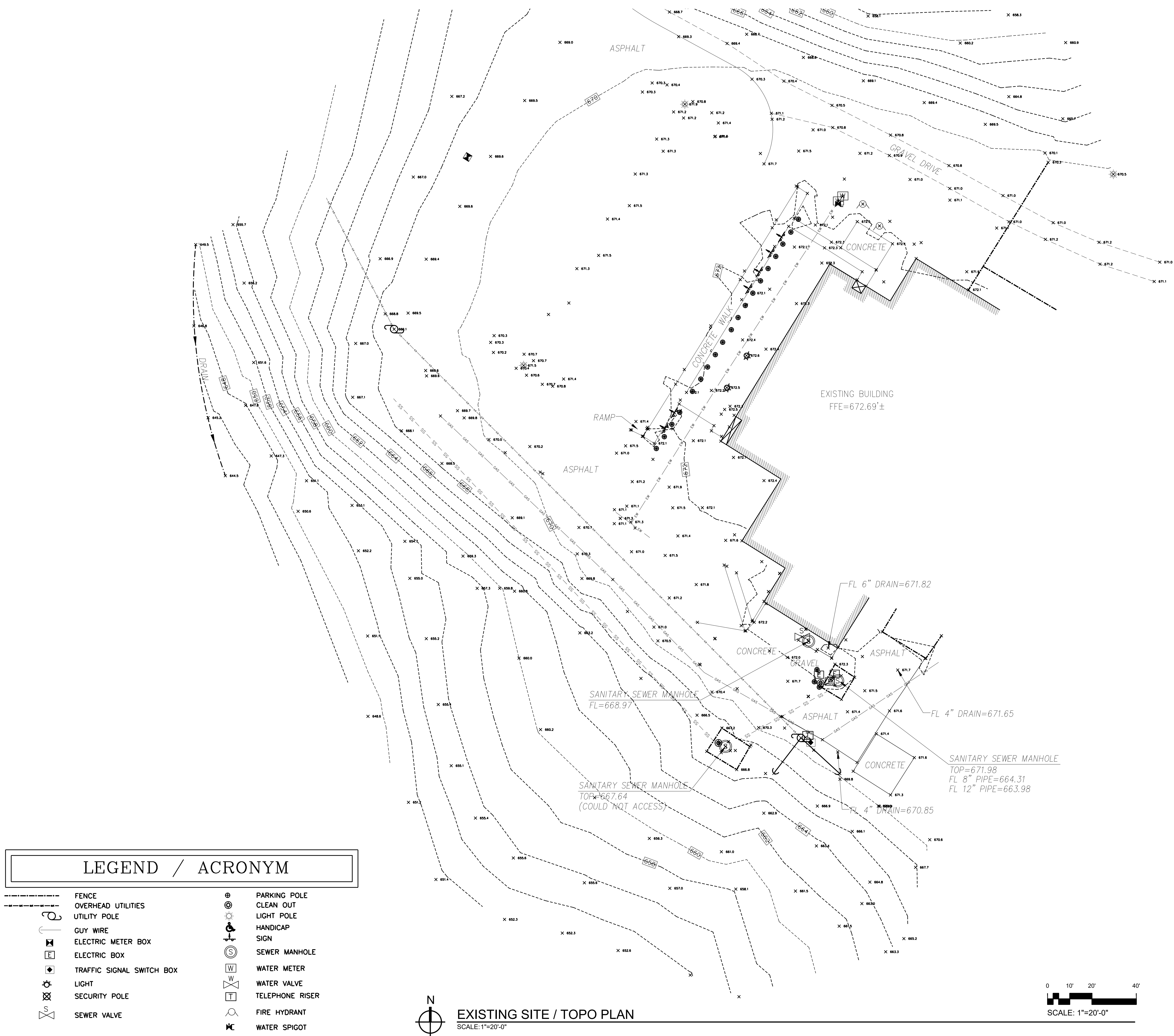
### 3.5 PROTECTION

- A. General: Protect completed membrane during installation of other materials or processes over membrane and throughout remainder of construction period. Do not allow traffic of any type on unprotected membrane.

END OF SECTION 07 13 00

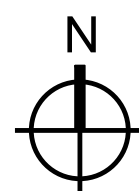
PRINTED: 2/2/2026 @ 4:22PM

FILE NAME: W:\JMRH Projects 2025\25-1465 Tallapoosa Co E911\CO.1 Topo Correct Scale.dwg



LEGEND / ACRONYM

- |  |                           |  |                 |
|--|---------------------------|--|-----------------|
|  | FENCE                     |  | PARKING POLE    |
|  | OVERHEAD UTILITIES        |  | CLEAN OUT       |
|  | UTILITY POLE              |  | LIGHT POLE      |
|  | GUY WIRE                  |  | HANDICAP        |
|  | ELECTRIC METER BOX        |  | SIGN            |
|  | ELECTRIC BOX              |  | SEWER MANHOLE   |
|  | TRAFFIC SIGNAL SWITCH BOX |  | WATER METER     |
|  | LIGHT                     |  | WATER VALVE     |
|  | SECURITY POLE             |  | TELEPHONE RISER |
|  | SEWER VALVE               |  | FIRE HYDRANT    |
|  |                           |  | WATER SPIGOT    |



EXISTING SITE / TOPO PLAN  
SCALE: 1"=20'-0"

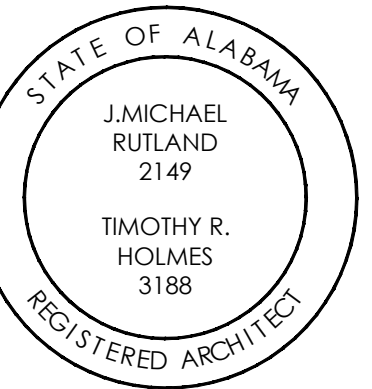
0 10' 20' 40'  
SCALE: 1"=20'-0"

JMR+H

Architecture, PC

445 Dexter Avenue  
Suite 5050  
Montgomery, AL 36104

Phone: (334) 420-5672  
Fax: (334) 420-5692



TALLAPOOSA  
CO E911  
ADDITION TO  
THE  
TALLAPOOSA  
COUNTY JAIL  
FACILITY

DADEVILLE, AL

CONSTRUCTION  
DOCUMENTS

Project Number: 25-1465

Date: 8 JANUARY 2026

Revisions:  
2 FEBRUARY 2026 SD-1

Sheet Description

EXISTING SITE  
/ TOPO

Sheet Number

C0.1  
SD-1

2 OF 40