



January 26, 2026

ADDENDUM NO. 1

Autauga WMA Office Meeting Complex
Prattville, Alabama

This Addendum No. 1, to the plans and specifications, dated 02 December 2025, consists of Thirteen (13) Pages.

Item No. 1: Refer to Advertisement for Bids:

- A. A **PRE-BID CONFERENCE** was held at the office of Alabama Dept of Conservation and Natural Resources 64 N. Union Street, Suite **547** Montgomery, AL 36130 on **January 20th 2026 at 10:00 AM** (local time prevailing) for the purpose of reviewing the project and answering Bidder's questions. See attached Minutes of the Meeting and Sign in Sheet of those in attendance.
- B. Sealed proposals will be received by Wildlife & Freshwater Fisheries Division at Alabama Dept of Conservation and Natural Resources 64 N. Union Street, Suite **551** Montgomery, AL 36130 until **2:00 PM February 5th 2026**, and opened publicly at **10:00 AM, February 6, 2026**. A Microsoft Teams Link will be provided, Contractors are invited to come for bid opening in **Suite 547**.

Item No. 2: Refer to Project Manual:

- A. **CLARIFICATION:** A DCM Permit will be required for this project.
- B. **CLARIFICATION:** All material testing shall be paid for by the General Contractor.

Item No. 3: Refer to Specifications, Section 09 67 20 Epoxy Flooring:

- C. **CLARIFICATION:** Epoxy Flooring to be Stonhard Stonres RTZ.

Item No. 4: Refer to Specifications, Section 10 44 00 Fire Protection Specialties:

- A. Specification section 10 44 00 Fire Protection Specialties is here by a part of the contract documents.
- B. **Clarification:** Wall hung fire extinguishers and fire extinguisher cabinets are located on the Life Safety Plan sheet LS1.1.

Item No. 5: Refer to Specifications, Section 13 34 19 Metal Building Systems:

- A. **CLARIFICATION:** See Specification Section 13 34 19 for roof requirements.
- C. Roof Panels shall be 16" wide with 2" tall vertical SSR.
- D. **Clarification:** Roof insulation shall be R-30 by PEMB supplier and the wall insulation shall be R-19 Batt Insulation.

Item No. 6: Refer to Specifications, Section 32 31 19 Decorative Metal Fences and Gates:

- A. Specification section 32 31 19 Decorative Metal Fences and Gates is hereby removed from the contract documents. Only black vinyl chain link fencing and gates shall be provided around the mechanical units at the rear of the building

Item No. 7: Refer to Plans, Sheet A1.1, 12 of 46, Floor Plan:

- A. **CLARIFICATION:** All walls are metal stud walls.
- B. See attached SD1 and SD1.1 for enlarged plans and elevations of Storage 105 and 110

Item No. 8: Refer to Plans, Sheet C1.0, 5 of 46, Overall Site Plan:

- A. See revised Sheet C1.0 for 4" PVC Drain Pipe.
- B. Legend has been updated to remove items not specified.

Item No. 9: Refer to Plans, Sheet C3.0, 8 of 46, Miscellaneous Details:

- A. See revised Sheet for updated Concrete Pavement Buildup and Sidewalk Detail. Broom finish is acceptable.

Item No. 10: Refer to Plans, Sheet HS1.2, 11 of 46, Enlarged Ramp Plan and Details F, L and M:

- A. **CLARIFICATION:** Refer to Sheet S3.0 for rebar sizes and/or reinforcing descriptions.

Item No. 11: Refer to Plans, Sheet S1.0, 27 of 46, General Notes, Note CN.12:

- A. **CLARIFICATION:** Macro-Fiber reinforcement only is required.

Item No. 12: The following manufacturers / products are approved subject to compliance with contract documents:

- A. 13 34 19 Metal Building Systems – ACI is hereby approved subject to strict conformance with the plans and specifications.
- B. 13 34 19 Metal Building Systems – ALL Metal Building Systems is afforded prior approval subject to strict conformance with the contract documents.
- C. 13 34 19 Metal Building Systems – Alliance Steel Buildings is afforded prior approval subject to strict conformance with the contract documents.
- D. 08 43 13 Aluminum Framed Storefronts – Coral Industries is afforded prior approval subject to strict conformance with the contract documents.

END OF ADDENDUM NO. 1

**AUTAUGA WMA OFFICE MEETING COMPLEX
AUTAUGA COUNTY, ALABAMA
DCM NO. 2025711**

**PRE-BID CONFERENCE
January 20, 2026 / 10:00 AM**

AGENDA

1. Introductions / Sign In

A. Owner:

Wildlife & Freshwater Fisheries Division
Todd Mize, todd.mize@dcnr.alabama.gov
Seth Maddox, seth.maddox@dcnr.alabama.gov
Keith Gaulden, keith.gauldin@dcnr.alabama.gov

B. Design Team:

Architectural: JMR+H Architecture, PC

Charles Herron, AIA / JMR+H Architecture, PC
cherron@jmrha.com

Civil: Larry E. Speaks & Associates

Paul McClendon
PMcClendon@lespeaks.com

Structural: Harvest

Brad Harrison / Harvest Engineering
bharrison@harvest-eng.com

Electrical: Mills-Conoly

Adam Mills / Mills-Conoly Engineering
amills@mills-conoly.com

Plumbing/
Mechanical: Sherer

Wesley Sherer, PE / Sherer Consulting Engineers, LLC
wesley@shererengineers.com

2. Project Background

A. The project consists of approximately 7,700 sf One Story Office and Meeting Building with completely furnished warming Kitchen. The building is a pre-engineered metal building with stud infill, stacked stone masonry veneer, horizontal metal wall panel, new reinforced concrete slab and metal roof with a covered outdoor open pavilion.,

B. Alternates: N/A

C. Allowances: N/A

2. Bid Procedures / Receipt of Proposals

A. Procedures outlined in Specifications and Advertisement

B. Plan Distribution Procedures – Contact Renae Williams / JMR+H at rwilliams@jmrha.com / 334/420-5672

C. Bid Date: **Thursday, February 5, 2026 / 2:00 PM CST / Wildlife & Freshwater Fisheries Division at Alabama Department of Conservation and Natural Resources, 64 N. Union Street, Suite 584 547, Montgomery, Alabama 36130.**

- D. Use bid forms provided in documents
- E. Sales and use tax exemption

3. Questions / Observations / Addenda

- A. **All** questions must be submitted in writing or electronic to Architect for consideration to specs@jmrha.com.
- B. All questions should be directed to A/E in writing. Responses will be sent to all bidders. Any pertinent questions that may be asked during site walk-through or site visits should be followed up in writing. Any verbal answers provided should be considered nonbinding.
- C. **All** questions and clarifications will be issued by Addendum
- D. **All** RFI's must be submitted in writing to Architect no later than **2:00 PM CST, Tuesday, February 3, 2026**.

4. Post Bid Schedule

- A. Anticipate awarding 2 – 3 weeks
- B. Perform all work in not more than 365 calendar days following the Notice to Proceed (NTP) or as determined by the General Contractor's proposal.

5. General Procedural Questions

6. Site Tour

- A. Contact Logan McCord (334) 850-5459
Charles D. Kelley Wild Life Management
2119 County Road 57
Prattville, AL

SECTION 10 44 00
FIRE PROTECTION SPECIALTIES

PART 1 GENERAL

1.01 SECTION INCLUDES

- A. Fire extinguishers.
- B. Fire extinguisher cabinets.

1.02 RELATED REQUIREMENTS

- A. Section 06 10 00 - Rough Carpentry: Wood blocking product and execution requirements.
- B. Section 09 91 23 - Interior Painting: Field paint finish.

1.03 REFERENCE STANDARDS

- A. ASTM E814 - Standard Test Method for Fire Tests of Penetration Firestop Systems; 2024.
- B. FM (AG) - FM Approval Guide; Current Edition.
- C. NFPA 10 - Standard for Portable Fire Extinguishers; 2026.
- D. UL (DIR) - Online Certifications Directory; Current Edition.

1.04 SUBMITTALS

- A. See Section 01 30 00 - Administrative Requirements, for submittal procedures.
- B. Product Data: Provide extinguisher operational features.
- C. Shop Drawings: Indicate locations of cabinets and cabinet physical dimensions.
- D. Manufacturer's Installation Instructions: Indicate special criteria and wall opening coordination requirements.
- E. Manufacturer's Certificate: Certify that products meet or exceed specified requirements.
- F. Maintenance Data: Include test, refill or recharge schedules and re-certification requirements.

1.05 FIELD CONDITIONS

- A. Do not install extinguishers when ambient temperature may cause freezing of extinguisher ingredients.

PART 2 PRODUCTS

2.01 MANUFACTURERS

- A. Fire Extinguishers:
 - 1. Activar Construction Products Group, Inc. - JL Industries; Cosmic Extinguisher - Multipurpose Chemical: www.activarcpg.com/#sle.
 - 2. Ansul, a Tyco Business www.ansul.com/#sle.
 - 3. Fire-End & Croker Corporation: www.croker.com/#sle.
 - 4. Kidde, a unit of United Technologies Corp www.kidde.com/#sle.
 - 5. Oval Brand Fire Products; Oval Dry Chemical Fire Extinguisher - Multipurpose ABC: www.ovalfireproducts.com/#sle.
 - 6. Potter-Roemer www.potterroemer.com/#sle.
 - 7. Pyro-Chem, a Tyco Business www.pyrochem.com/#sle.
 - 8. Substitutions: See Section 01 60 00 - Product Requirements.
- B. Fire Extinguisher Cabinets and Accessories:
 - 1. Activar Construction Products Group, Inc. - JL Industries; Ambassador Series: www.activarcpg.com/#sle.
 - 2. Fire-End & Croker Corporation: www.croker.com/#sle.
 - 3. Kidde, a unit of United Technologies Corp www.kidde.com/#sle.
 - 4. Larsen's Manufacturing Co www.larsensmfg.com/#sle.

5. Oval Brand Fire Products; Cabinets for Low Profile Extinguishers:
www.ovalfireproducts.com/#sle.
6. Potter-Roemer www.potterroemer.com/#sle.
7. The Williams Brothers Corporation of America; Classic Economy Series:
www.wbdoors.com/#sle.
8. Substitutions: See Section 01 60 00 - Product Requirements.

2.02 FIRE EXTINGUISHERS

- A. Fire Extinguishers - General: Comply with product requirements of NFPA 10 and applicable codes, whichever is more stringent.
 1. Provide extinguishers labeled by UL (DIR) or FM (AG) for purpose specified and as indicated.
- B. Multipurpose Dry Chemical Type Fire Extinguishers: Carbon steel tank, with pressure gauge.
 1. Stored Pressure Operated: Deep Drawn.
 2. Class: A:B:C type.
 3. Size: 2.5 pound (1.13 kg).
 4. Size and classification as scheduled.
 5. Finish: Baked polyester powder coat, red color.
 6. Temperature range: Minus 40 degrees F (Minus 40 degrees C) to ____ degrees F (____ degrees C).

2.03 FIRE EXTINGUISHER CABINETS

- A. Fire Rating: Listed and labeled in accordance with ASTM E814 requirements for fire resistance rating of walls where being installed.
- B. Cabinet Construction: Non-fire rated.
 1. Formed primed steel sheet; 0.036 inch (0.9 mm) thick base metal.
- C. Fire Rated Cabinet Construction: One-hour fire rated.
 1. Steel; double wall or outer and inner boxes with 5/8 inch (15.9 mm) thick fire barrier material.
- D. Cabinet Configuration: Recessed type.
 1. Size to accommodate accessories.
 2. Provide cabinet enclosure with right angle inside corners and seams, and with formed perimeter trim and door stiles.
- E. Door: 0.036 inch (0.9 mm) metal thickness, reinforced for flatness and rigidity with nylon catch. Hinge doors for 180 degree opening with two butt hinges.
- F. Door Glazing: Float glass, clear, 1/8 inch (3 mm) thick, and set in resilient channel glazing gasket.
- G. Cabinet Mounting Hardware: Appropriate to cabinet, with pre-drilled holes for placement of anchors.
- H. Fabrication: Weld, fill, and grind components smooth.
- I. Finish of Cabinet Exterior Trim and Door: No.4 - Brushed stainless steel.
- J. Finish of Cabinet Interior: White colored enamel.

PART 3 EXECUTION

3.01 EXAMINATION

- A. Verify existing conditions before starting work.
- B. Verify rough openings for cabinet are correctly sized and located.

3.02 INSTALLATION

- A. Install in accordance with manufacturer's instructions.
- B. Install cabinets plumb and level in wall openings.

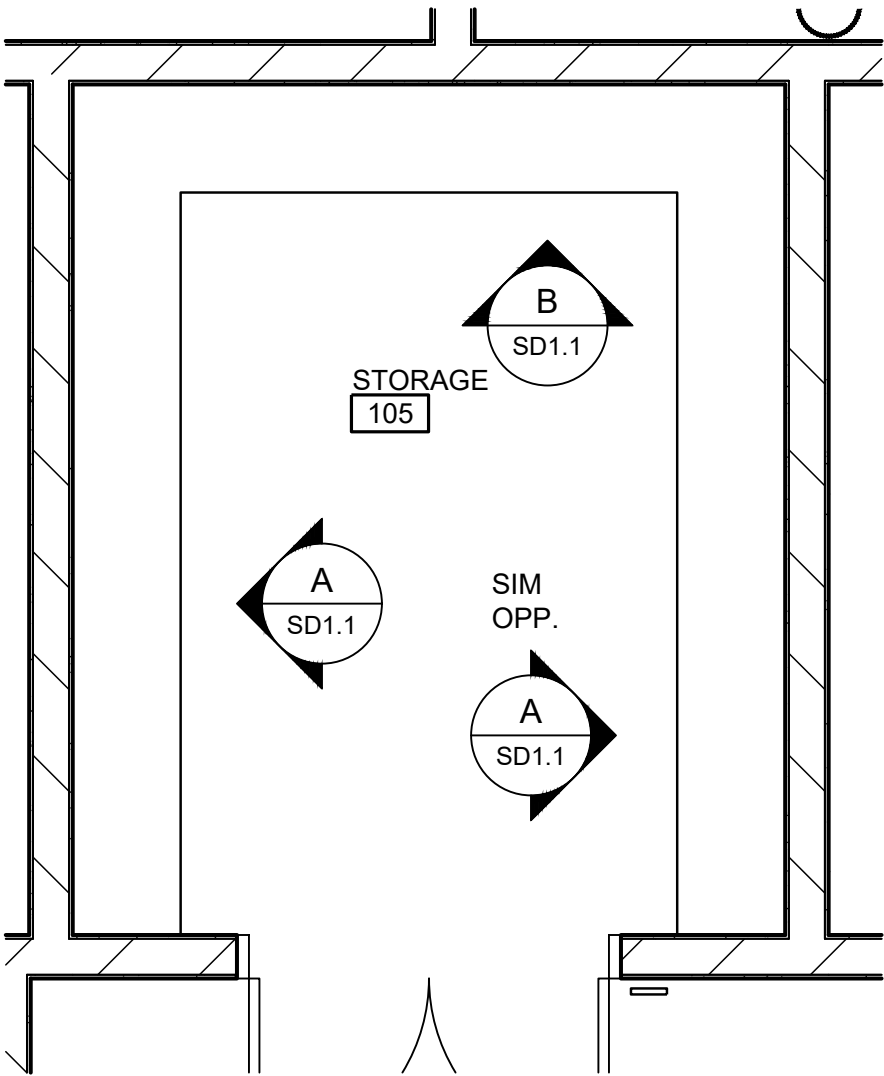
AUTAUGA WMA OFFICE MEETING COMPLEX
PRATTVILLE, ALABAMA

- C. Secure rigidly in place.
- D. Place extinguishers in cabinets.

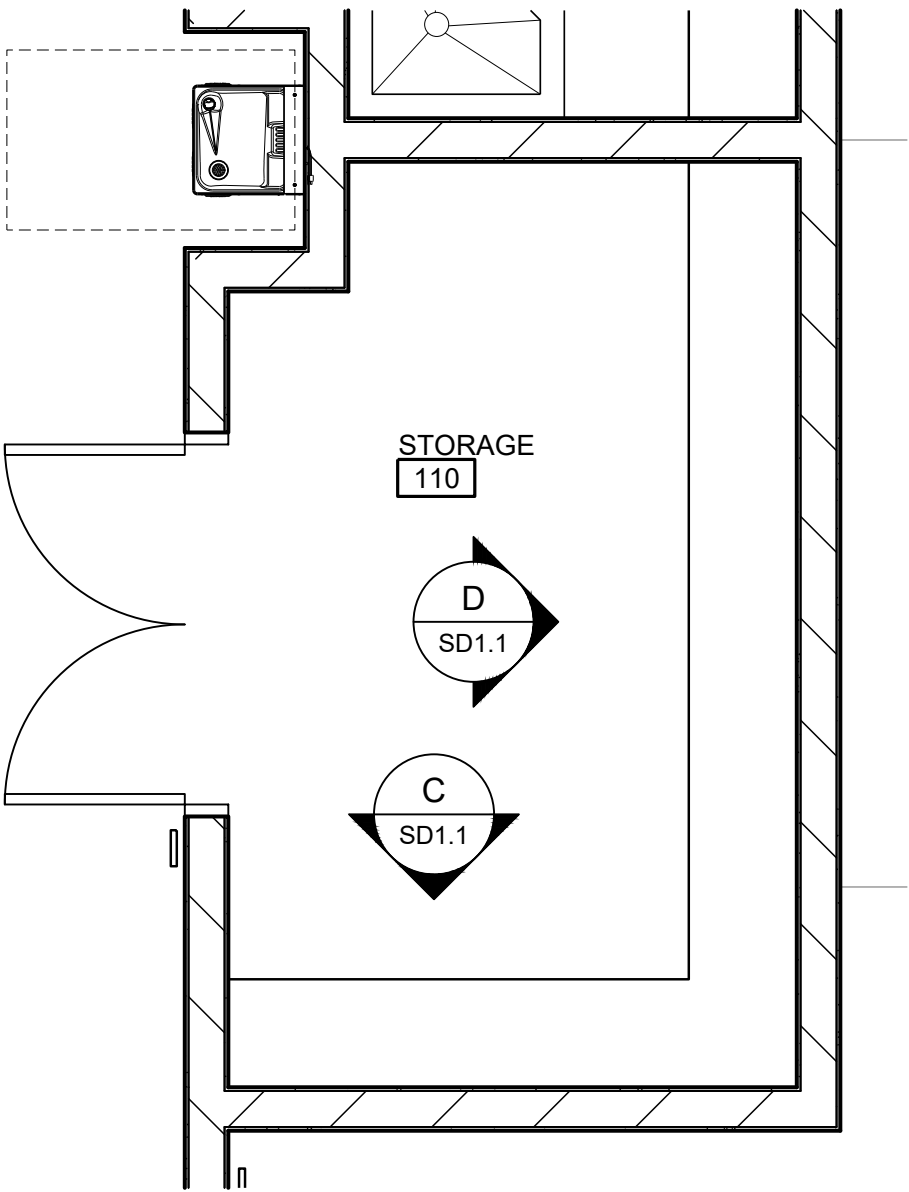
3.03 MAINTENANCE

- A. See Section 01 70 00 - Execution and Closeout Requirements, for additional requirements relating to maintenance service.
- B. Provide a separate maintenance contract for specified maintenance service.

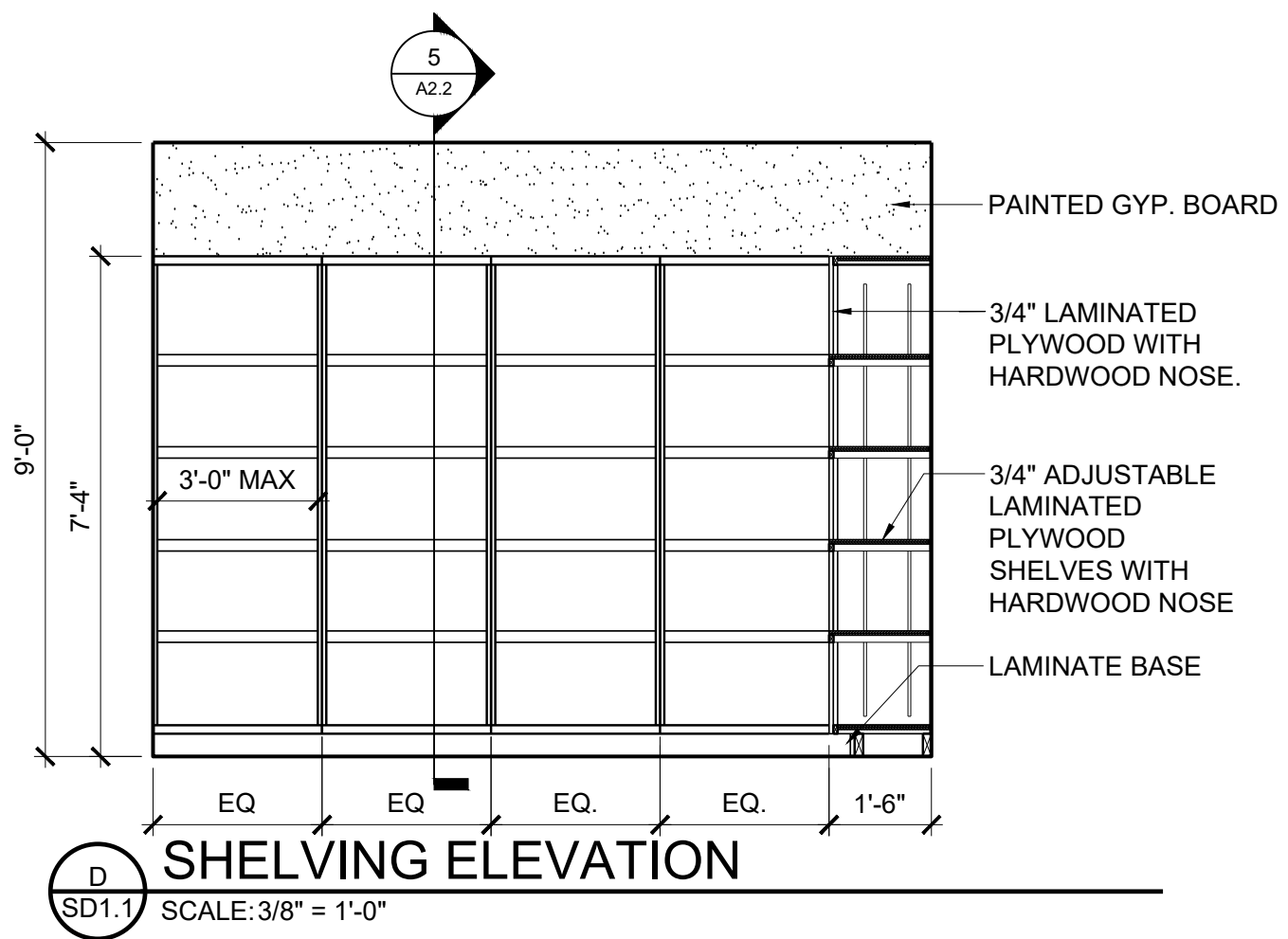
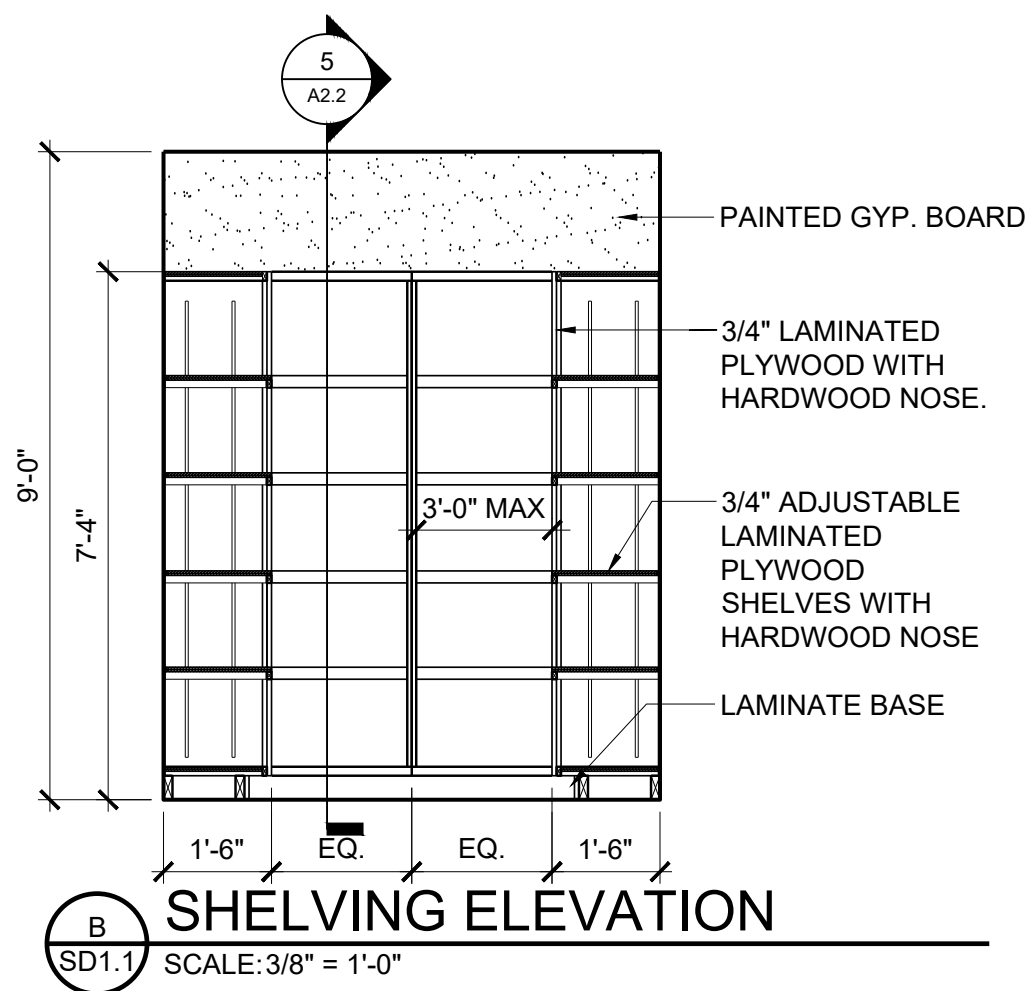
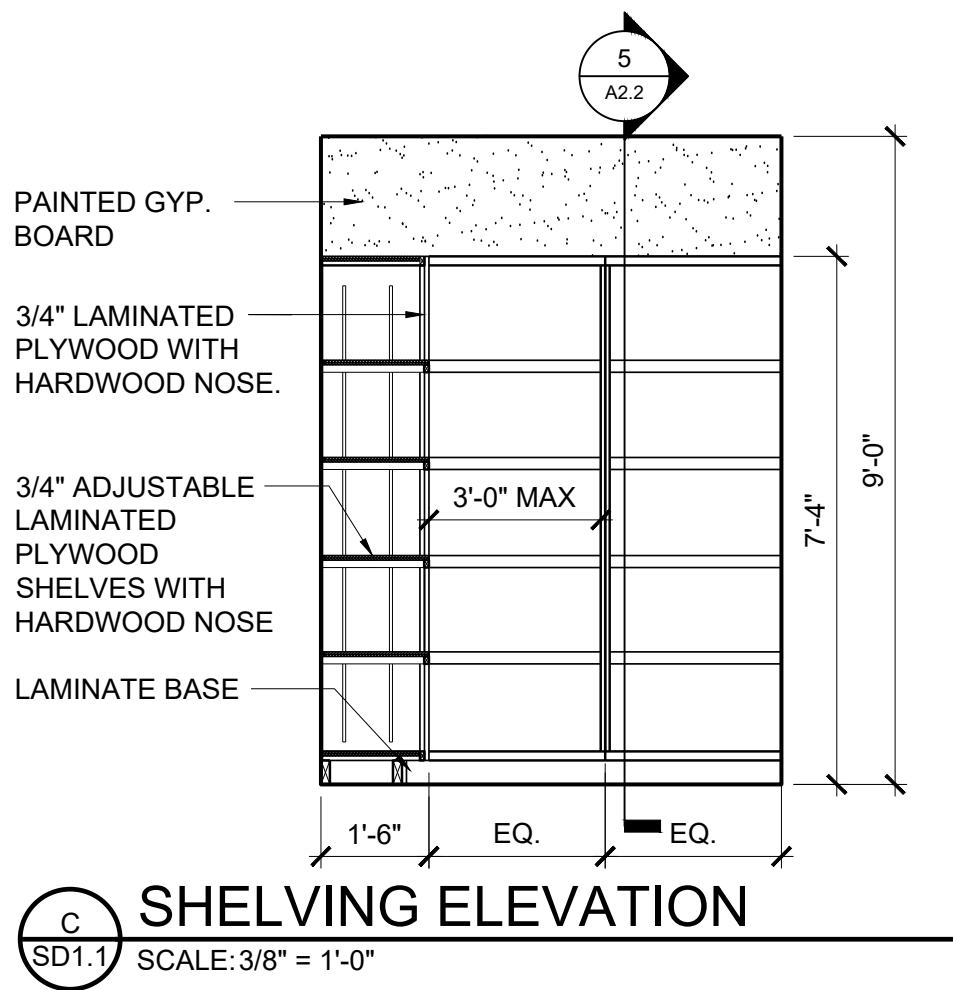
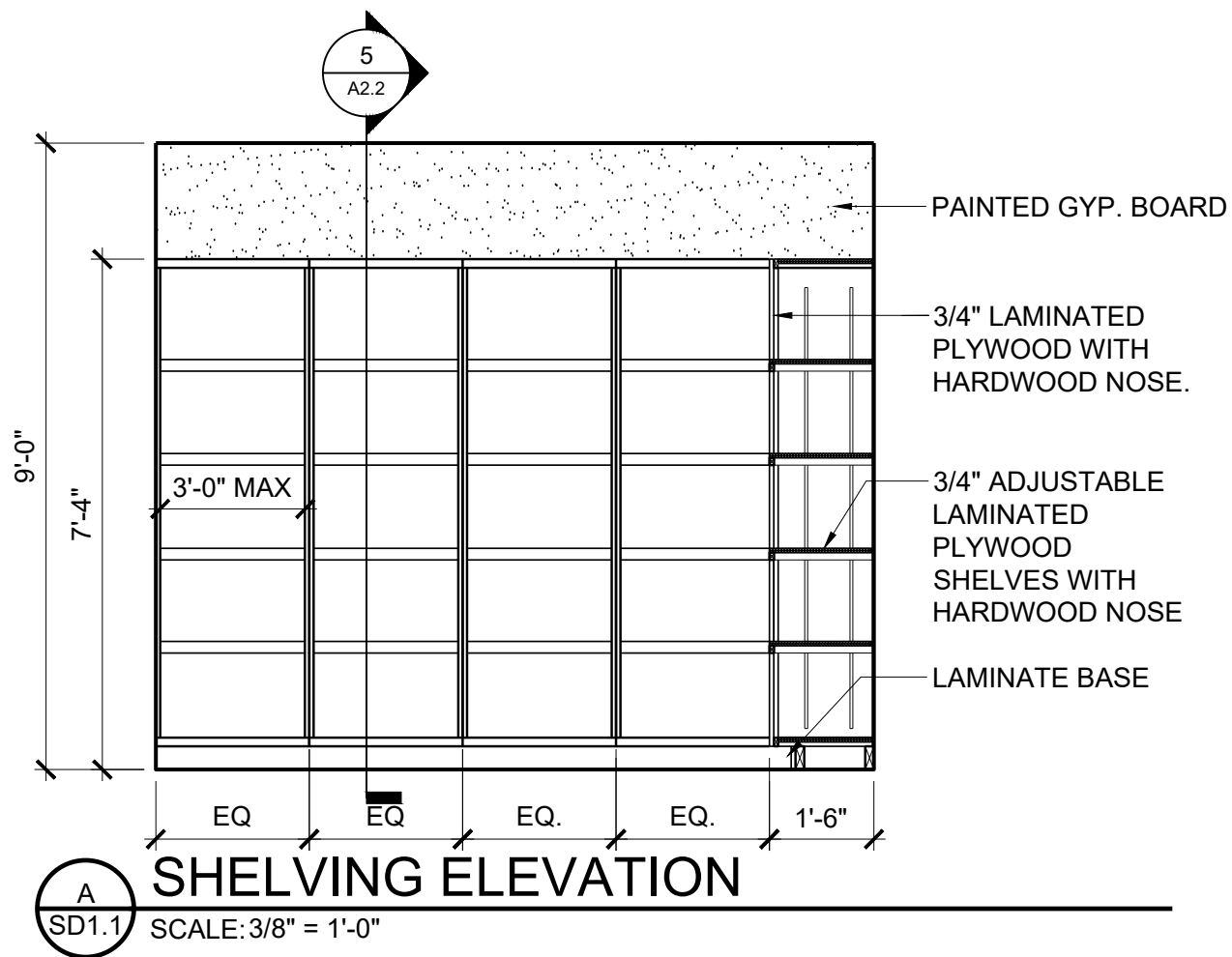
END OF SECTION 10 44 00



1 STORAGE 105 LARGE SCALE PLAN
SD1 SCALE: 3/8"=1'-0"



2 STORAGE 110 LARGE SCALE PLAN
SD1 SCALE: 3/8"=1'-0"

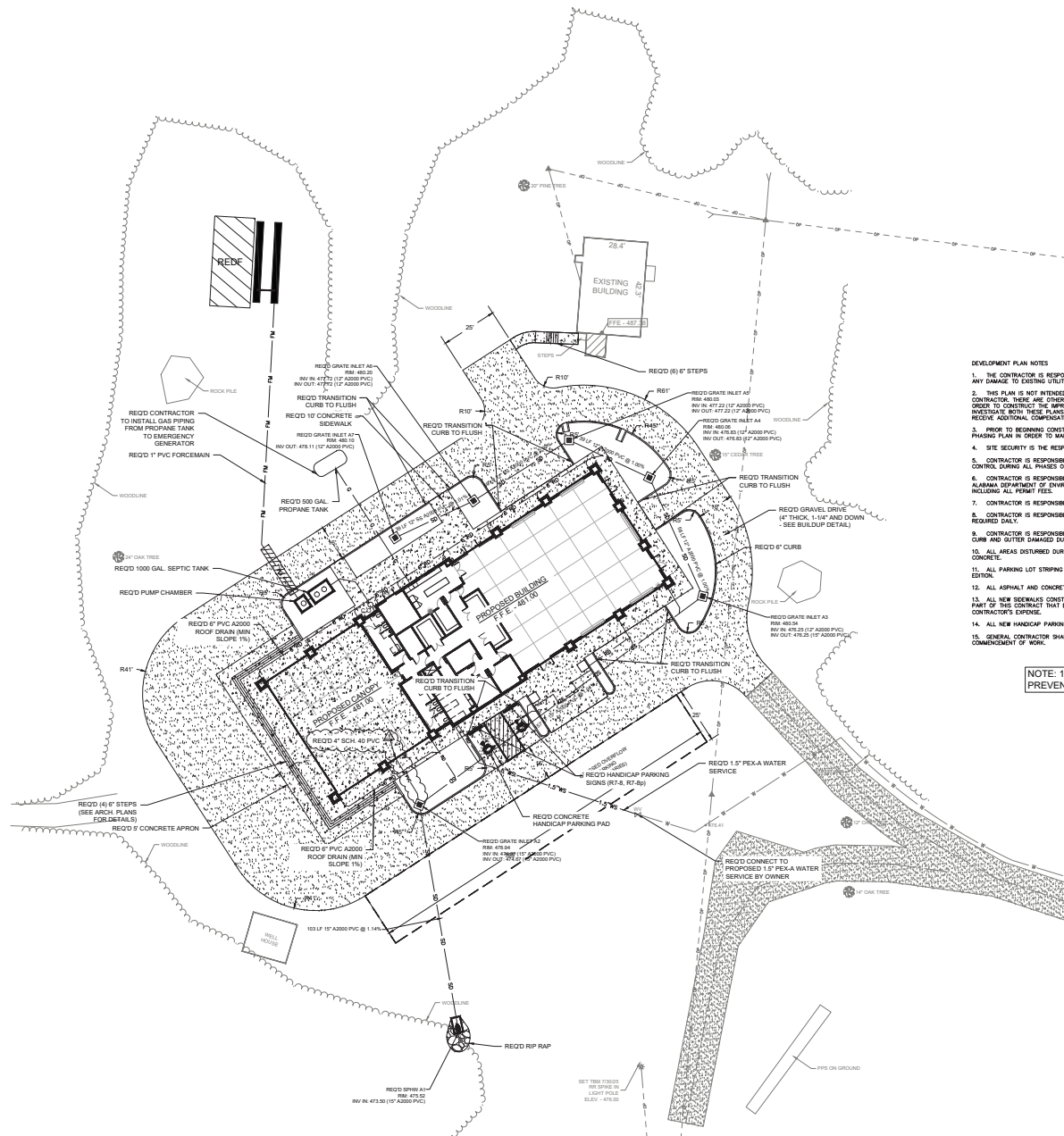


25-1466
AUTAUGA WMA OFFICE MEETING
COMPLEX
AUTAUGA COUNTY, ALABAMA
JANUARY 26, 2025

SD-1.1(REF. DWG. A2.1)

JMR+H

Architecture, PC



LEGEND	
EXISTING	PROPOSED
GRAVEL	GRAVEL
CONCRETE	CONCRETE PAVING
FOUND IRON PIN	SAFETY BEER
CALCULATED POINT	SAFETY LATERAL
SET IRON PIN	WATER MAIN
OFF FIRM CAPTURED	STORM DRAIN
W/ CA007/LS	CONDUIT
WATER METER	SILT FENCE
WATER VALVE	BUILT PROTECTION
TELEPHONE BOX	WATER VALVE
WATER FAUCET	CLEANOUT
POWER POLE/BOX	SHIELD
OVERHEAD POWER	
LIGHT POLE	
PROPANE TANK	
SPOT ELEVATION	
EXISTING CONTOUR	
TREE	

NOTE: ELEVATIONS ESTABLISHED BY CORP. STATION AL 80, NAD 83 MONTGOMERY COUNTY AND CORP STATION ALLC, CHILTON COUNTY, ALABAMA.

DEVELOPMENT PLAN NOTES

1. THE CONTRACTOR IS RESPONSIBLE FOR HAVING ALL EXISTING UTILITIES LOCATED PRIOR TO CONSTRUCTION. ANY DAMAGE TO EXISTING UTILITIES IS THE RESPONSIBILITY OF THE CONTRACTOR.
2. THIS PLAN IS NOT INTENDED TO SHOW EACH AND EVERY ITEM TO BE REMOVED OR DEMOLISHED BY THE CONTRACTOR. THERE ARE OTHER ITEMS NOT SHOWN THAT THE CONTRACTOR MUST REMOVE AND/OR REPLACE IN ORDER TO CONSTRUCT THE IMPROVEMENTS SHOWN IN THESE PLANS. THE CONTRACTOR SHALL THOROUGHLY INVESTIGATE BOTH THESE PLANS AND THE SITE PRIOR TO SUBMITTING A BID. THE CONTRACTOR WILL NOT RECEIVE ADDITIONAL COMPENSATION FOR ITEMS NOT NOTED TO BE REMOVED IN THESE PLANS.
3. PRIOR TO BEGINNING CONSTRUCTION, CONTRACTOR TO COORDINATE WITH THE OWNER TO DEVELOP A PAVING PLAN IN ORDER TO MAINTAIN NORMAL FACILITY OPERATIONS DURING CONSTRUCTION.
4. SITE SECURITY IS THE RESPONSIBILITY OF THE CONTRACTOR.
5. CONTRACTOR IS RESPONSIBLE FOR INSTALLING AND MAINTAINING ADEQUATE EROSION/SEDIMENTATION CONTROL DURING ALL PHASES OF CONSTRUCTION.
6. CONTRACTOR IS RESPONSIBLE FOR OBTAINING A CONSTRUCTION STORMWATER PERMIT THROUGH THE ALABAMA DEPARTMENT OF ENVIRONMENTAL MANAGEMENT (ADEM) PRIOR TO BEGINNING EARTH MOVING ACTIVITIES, INCLUDING ALL PERMIT FEES.
7. CONTRACTOR IS RESPONSIBLE FOR THE COST OF OBTAINING ANY REQUIRED PERMITS.
8. CONTRACTOR IS RESPONSIBLE FOR KEEPING MAID AND DEBRIS OFF PUBLIC STREETS AND ROW. CLEAN UP IS REQUIRED DAILY.
9. CONTRACTOR IS RESPONSIBLE FOR THE REPLACEMENT OF ASPHALT/CONCRETE PAVEMENT, SIDEWALK AND/OR CURB AND GUTTER DAMAGED DURING CONSTRUCTION.
10. ALL AREAS DISTURBED DURING CONSTRUCTION SHALL BE STABILIZED WITH GRASS, GRAVEL, ASPHALT OR CONCRETE.
11. ALL PARKING LOT STRIPING SHALL BE CLASS 1 PER ADOT STANDARD SPECIFICATIONS SECTION 702, LATEST EDITION.
12. ALL ASPHALT AND CONCRETE NOTED TO BE REMOVED SHALL BE SAW CUT TO PROVIDE A CLEAN EDGE.
13. ALL NEW SIDEWALKS CONSTRUCTED SHALL NOT EXCEED 2% CROSS SLOPE. ANY SIDEWALKS CONSTRUCTED AS PART OF THIS CONTRACT THAT EXCEED 2% CROSS SLOPE WILL BE REMOVED AND REPLACED AT THE CONTRACTOR'S EXPENSE.
14. ALL NEW HANDICAP PARKING SPACES CONSTRUCTED MUST MEET OR EXCEED ADA REQUIREMENTS.
15. GENERAL CONTRACTOR SHALL CONFIRM ALL WORK IDENTIFIED TO BE "BY OTHERS" IS COMPLETE PRIOR TO COMMENCEMENT OF WORK.

NOTE: 1.5" WATER METER & BACKFLOW PREVENTER TO BE PROVIDED BY OWNER.

CONSTRUCTION DOCUMENTS

Project Number: 25-1466
Date: 2 DECEMBER 2025
Revisions:

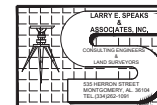
ADDENDUM #1 01-23-25

Sheet Description

OVERALL SITE PLAN

Sheet Number

C1.0





CONSTRUCTION
DOCUMENTS

Project Number: 25-1466
Date: 2 DECEMBER 2025

Revisions:

ADDENDUM #1 01-23-20

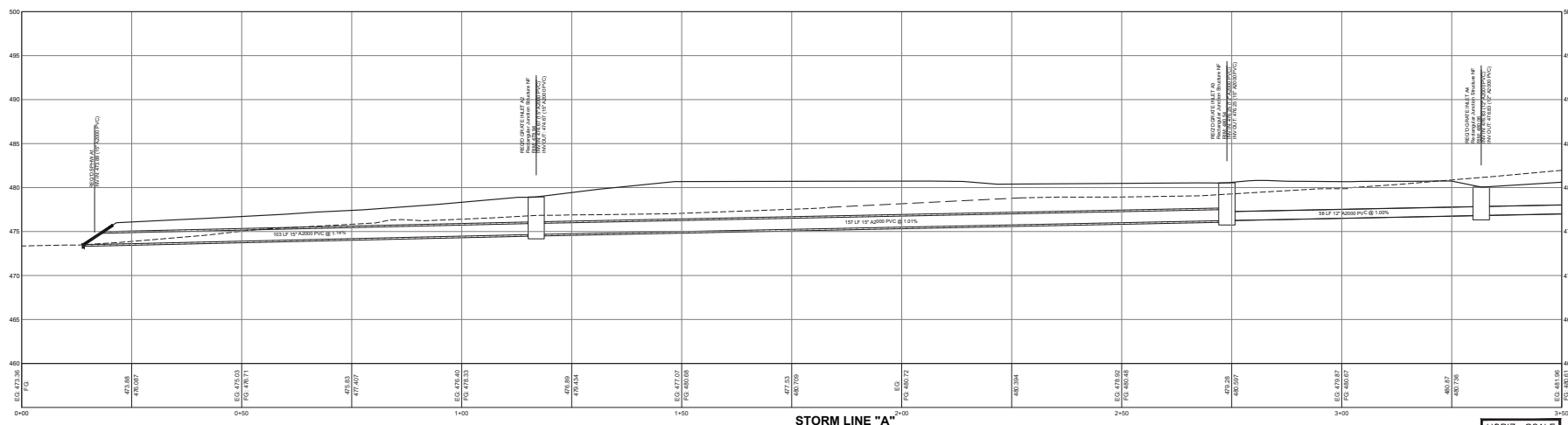
Sheet Description

MISCELLANEOUS DETAILS

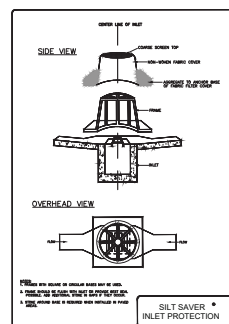
Sheet Number

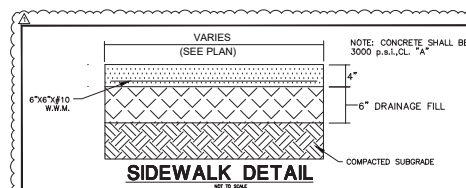
C3.0

8 OF 46

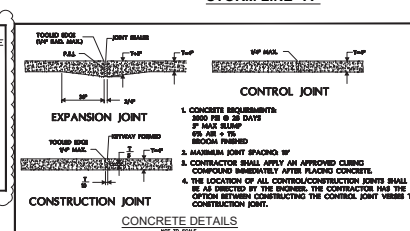


STORM LINE "A"

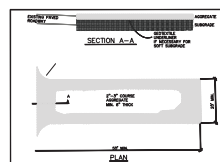




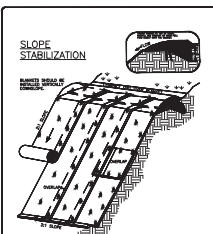
SIDEWALK DETAIL



CONCRETE DETAILS



TEMPORARY GRAVEL



1. EFFECTIVE COVER MADE OF STRAW, JUTE, WOOD, PLASTER, WYLLIN, PAPER, OR OTHER.

2. USE TO PROTECT AGAINST EROSION DURING FORMING, (I.E. STEEP SLOPES, CHANNELS, ETC)

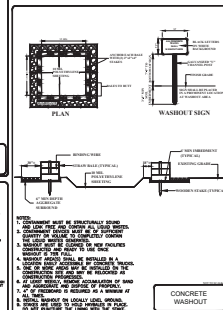
3. MALE PROTECTING VEGETATIVE GROWTH.

4. SLOPE MUST BE GRADUED TO A MINIMUM STANDING SURFACE WITH NO LEAKS, ROCKS, CLIPS, AND ETC. COMPAKED FINE GRAINED SOIL BEHIND THE SOIL SURFACE.

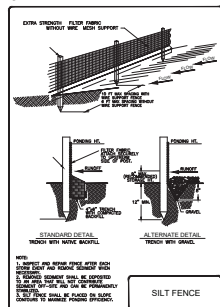
5. ROYAL BARKETS ACCORDING TO MANUFACTURER'S RECOMMENDATIONS, ESPECIALLY SUITABLE FOR OVERLAY ROYAL, AND STAMPING PATTERN.

6. AFTER EROSION CONTROL IS IN PLACE, EROSION AND LOOSING DECREASES. REPAIR BY TILLING

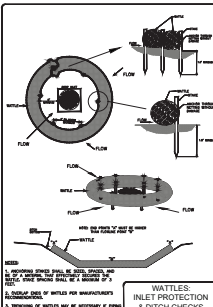
**EROSION CONTROL
BLANKET**



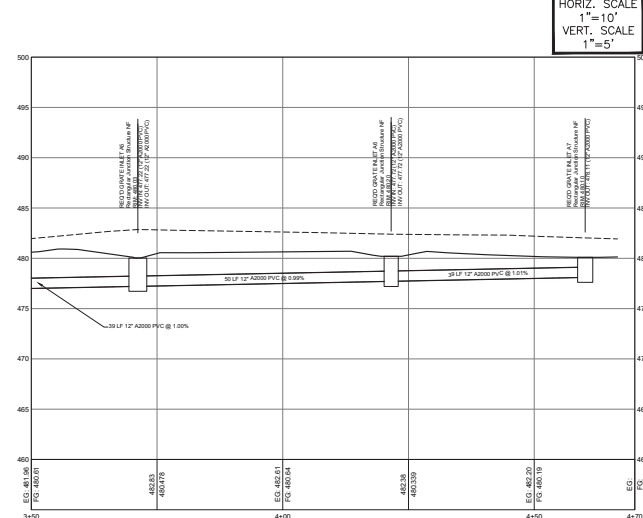
CONCRETE



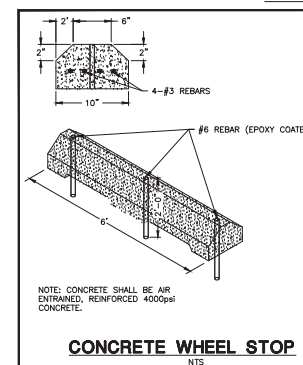
SILT FENCE



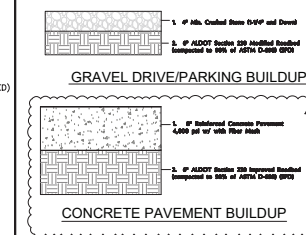
WATTLES:



STORM LINE "A" (CONTINUED)



CONCRETE WHEEL STOP
NTS



CONCRETE PAVEMENT BUILDUP

