

**US Army Corps**<sup>®</sup>  
**of Engineers**  
Mobile District  
**BUILDING STRONG**<sup>®</sup>

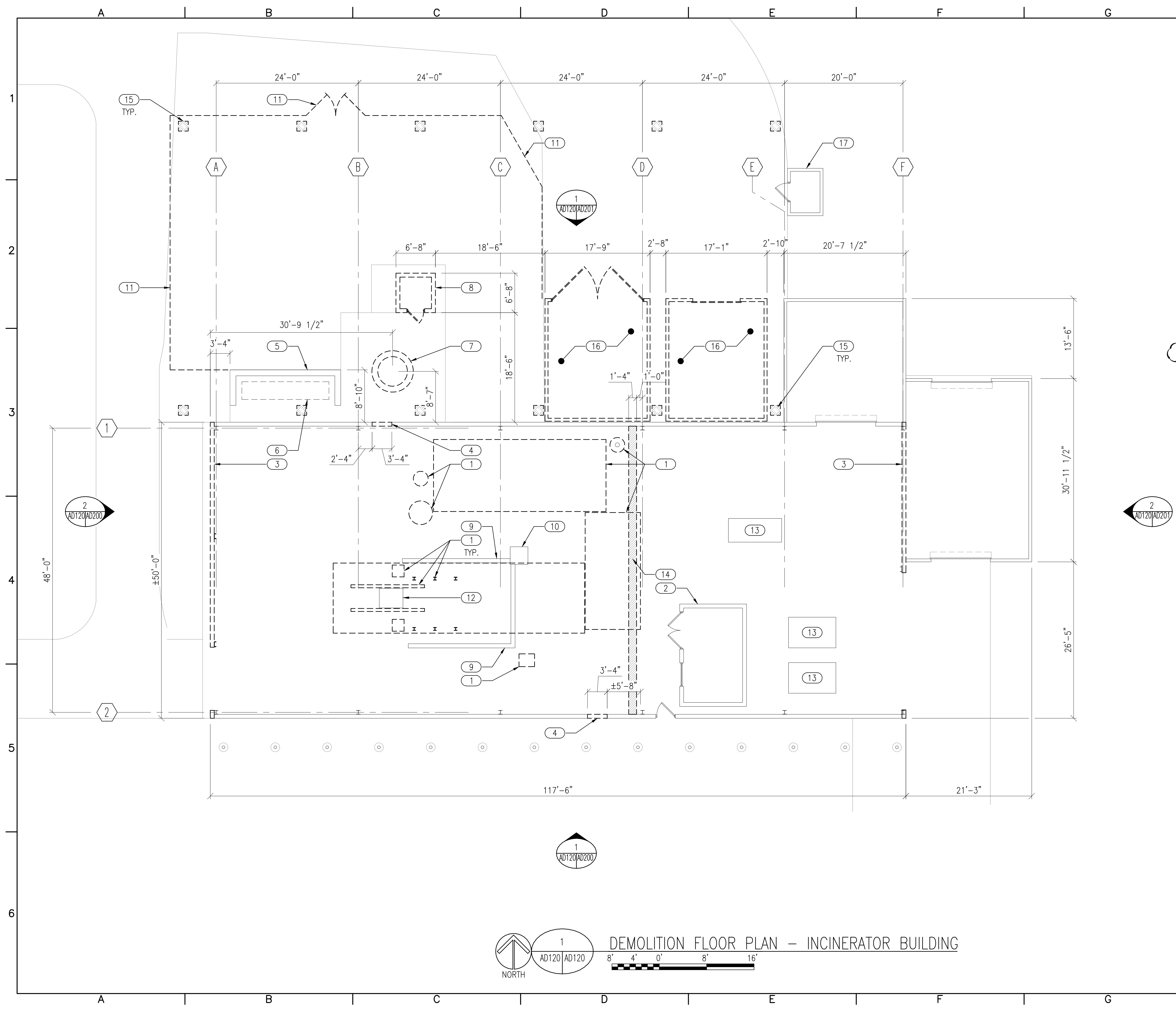
**FEB 17, 2025**

**REQUEST FOR PROPOSAL PLANS FOR  
DHS COBRA INCINERATOR DISPOSAL  
AND FACILITY REUTILIZATION  
ANNISTON, AL**

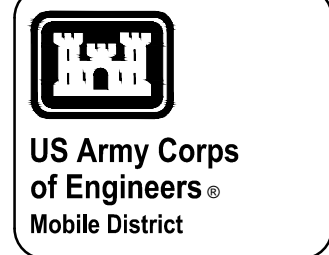
**MOBILE DISTRICT PROJECT CODE: SBH25001  
SOLICITATION NO.: W9127826R1AYP**

**CALHOUN COUNTY  
ALABAMA**

**AMENDMENT NO. 0003**



- ### KEYNOTES
- 1 DEMOLISH EXISTING INCINERATOR EQUIPMENT AND ASSOCIATED PIPING AND UTILITIES. .
  - 2 EXISTING CMU STRUCTURE TO REMAIN.
  - 3 REMOVE EXISTING STEEL WALL GIRTS AND METAL WALL PANEL.
  - 4 REMOVE PORTION OF EXISTING METAL PANEL AND FRAMING TO ACCOMMODATE NEW DOOR, SEE NEW WORK PLANS FOR ADDITIONAL INFORMATION.
  - 5 EXISTING CMU KNEE WALL TO REMAIN.
  - 6 EXISTING GAS PIPING TO REMAIN.
  - 7 DEMOLISH EXISTING INCINERATOR FLUE.
  - 8 DEMOLISH EXISTING EQUIPMENT BUILDING IN ITS ENTIRETY.
  - 9 EXISTING TRENCH TO REMAIN.
  - 10 EXISTING SUMP TO REMAIN.
  - 11 DEMOLISH EXISTING 6'-0"H CHAIN LINK FENCING AND GATES.
  - 12 EXISTING 9" DEEP PIT.
  - 13 EXISTING EQUIPMENT TO REMAIN.
  - 14 DEMOLISH EXISTING CONCRETE SLAB AS REQUIRED FOR NEW WALL FOOTING.
  - 15 REMOVE EXISTING PAVING/VEGETATION TO ACCOMMODATE NEW CONSTRUCTION (BID OPTION 2)
  - 16 DEMOLISH EXISTING STORAGE SHED (BID OPTION 2).
  - 17 MODULAR BUILDING TO REMAIN.

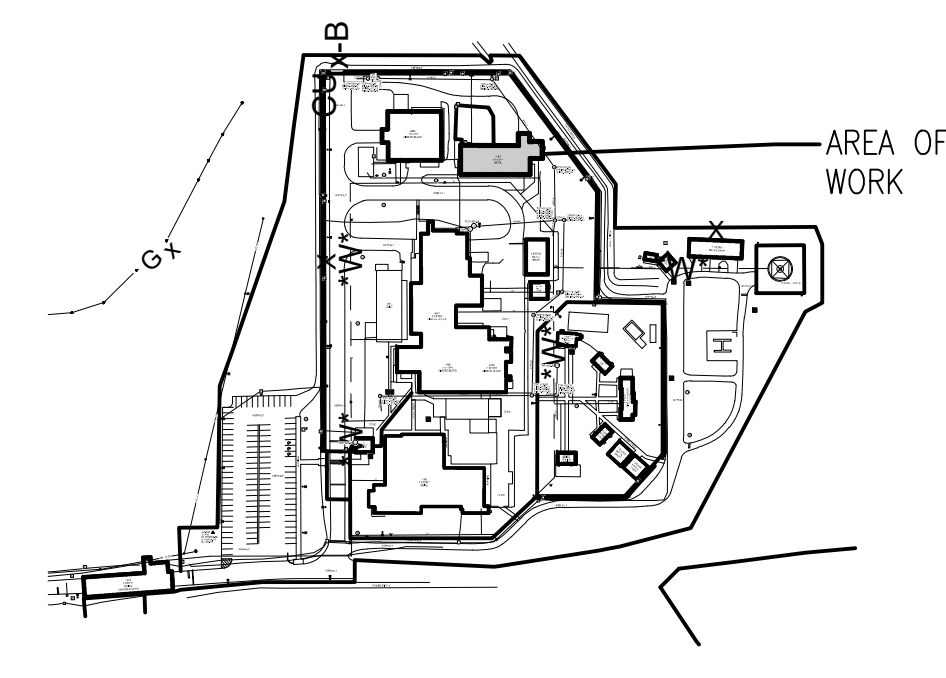


Symbol	Description	Date	Approved
1	AMENDMENT 0002	APRIL 2026	

Designed By:	KG	Date:	17 FEB 2025
Drawn By:	BK	File No.:	
Checked By:	GT	I.S.O. Sheet File Name:	
Reviewed By:		Solicitation Number:	

U.S. ARMY ENGINEER DISTRICT  
 CORPS OF ENGINEERS  
 MOBILE, ALABAMA

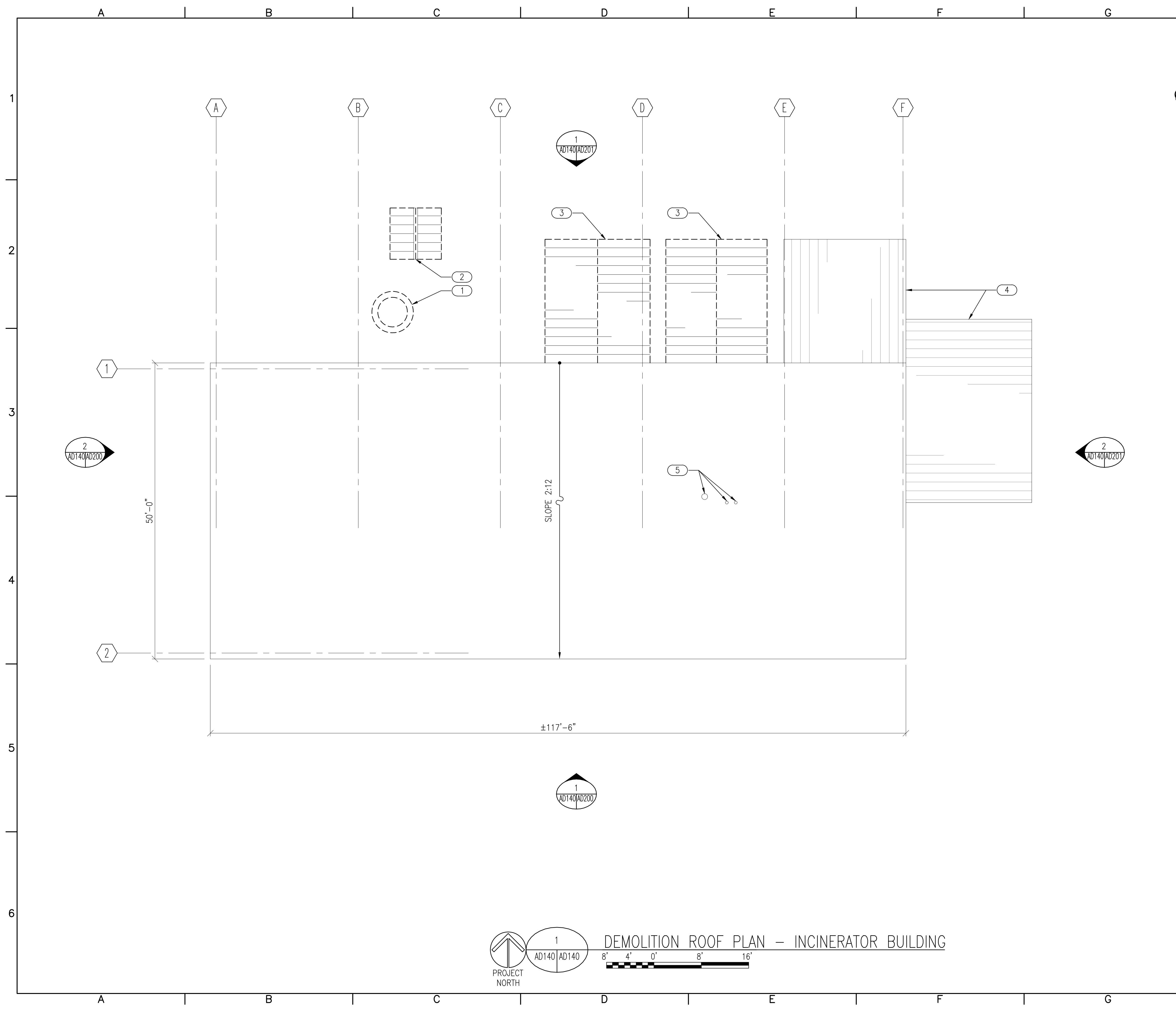
### KEY PLAN



**DEMOLITION FLOOR PLAN - INCINERATOR BUILDING**  
 AD120 AD120

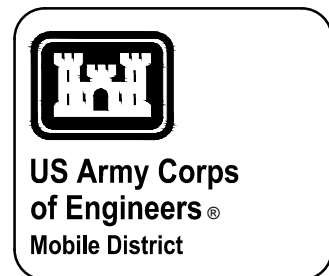
DHS COBRA INCINERATOR DISPOSAL AND FACILITY REUTILIZATION ANNISTON, AL  
**DEMOLITION FLOOR PLAN**

Sheet Reference Number:  
**AD120**



**KEYNOTES**

- 1 DEMOLISH EXISTING INCINERATOR FLUE.
- 2 DEMOLISH EXISTING EQUIPMENT BUILDING IN ITS ENTIRETY.
- 3 DEMOLISH EXISTING STORAGE SHED (BID OPTION 2).
- 4 EXISTING STORAGE SHED TO REMAIN.
- 5 EXISTING VENT STACK TO REMAIN.



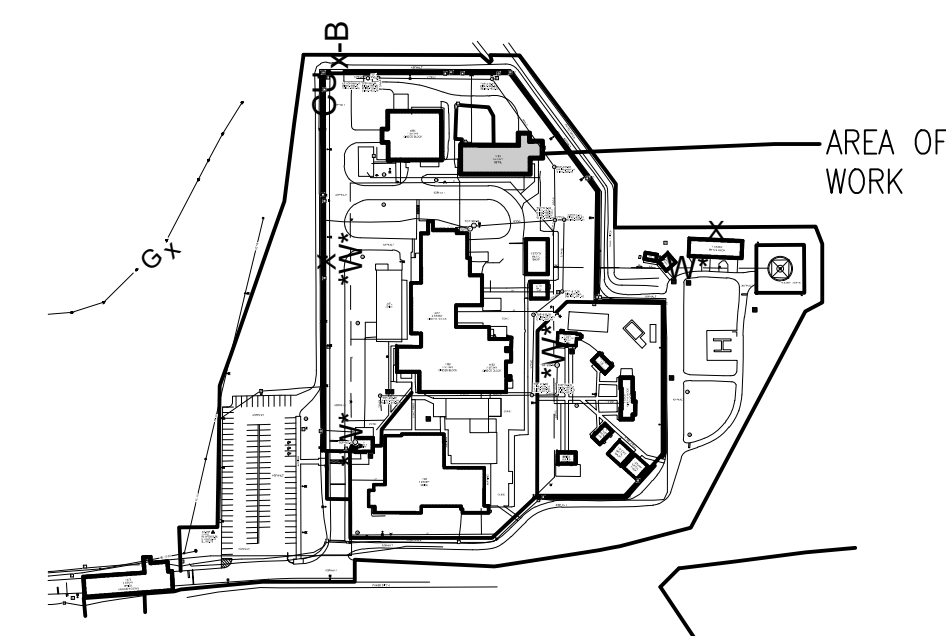
Symbol	Description	Date	Approved
1	AMENDMENT 0002	APRIL 2026	

Designed By: KGR	Date: 17 FEB 2025
Drawn By: BK	File No.:
Checked By: GY	U.S.O. Sheet File Name:
Reviewed By:	Solicitation Number:

U.S. ARMY ENGINEER DISTRICT  
CORPS OF ENGINEERS  
MOBILE, ALABAMA

**Schmidt PRINE**  
Professional Engineers  
Alabama License No. 32922

**KEY PLAN**



**GENERAL NOTES**

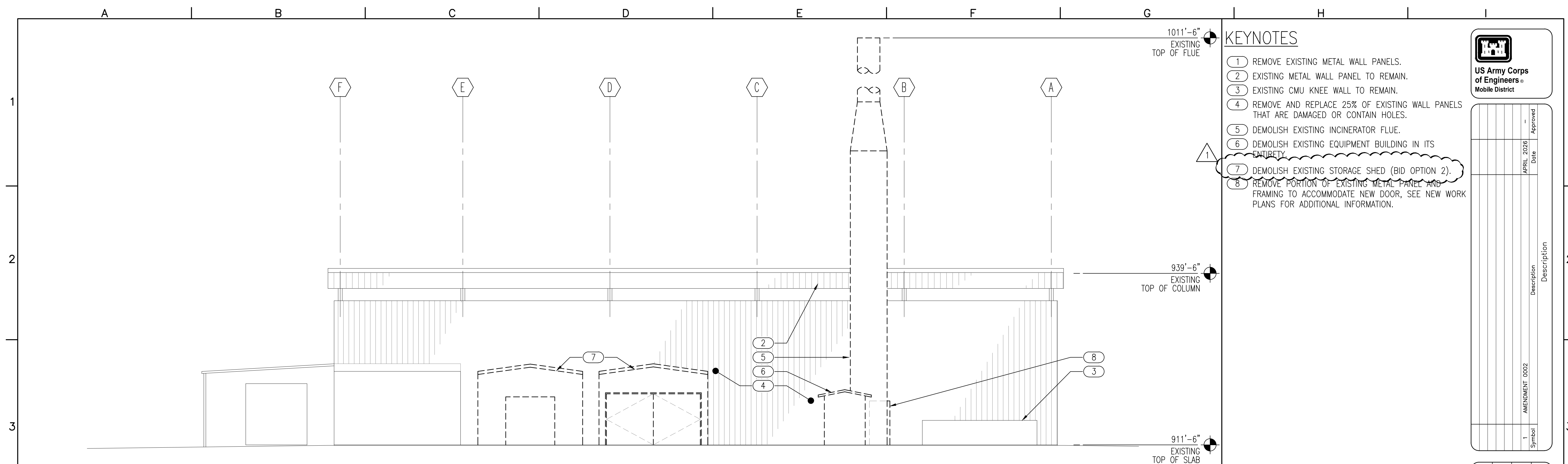
1. NOT USED.

DHS COBRA INCINERATOR DISPOSAL AND FACILITY REUTILIZATION ANNISTON, AL

**DEMOLITION ROOF PLAN**

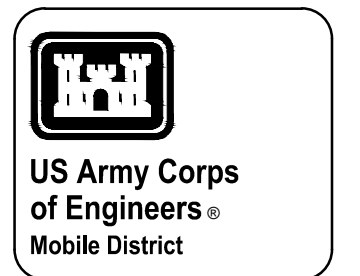
1  
AD140 AD140
DEMOLITION ROOF PLAN – INCINERATOR BUILDING

Sheet Reference Number:  
**AD140**

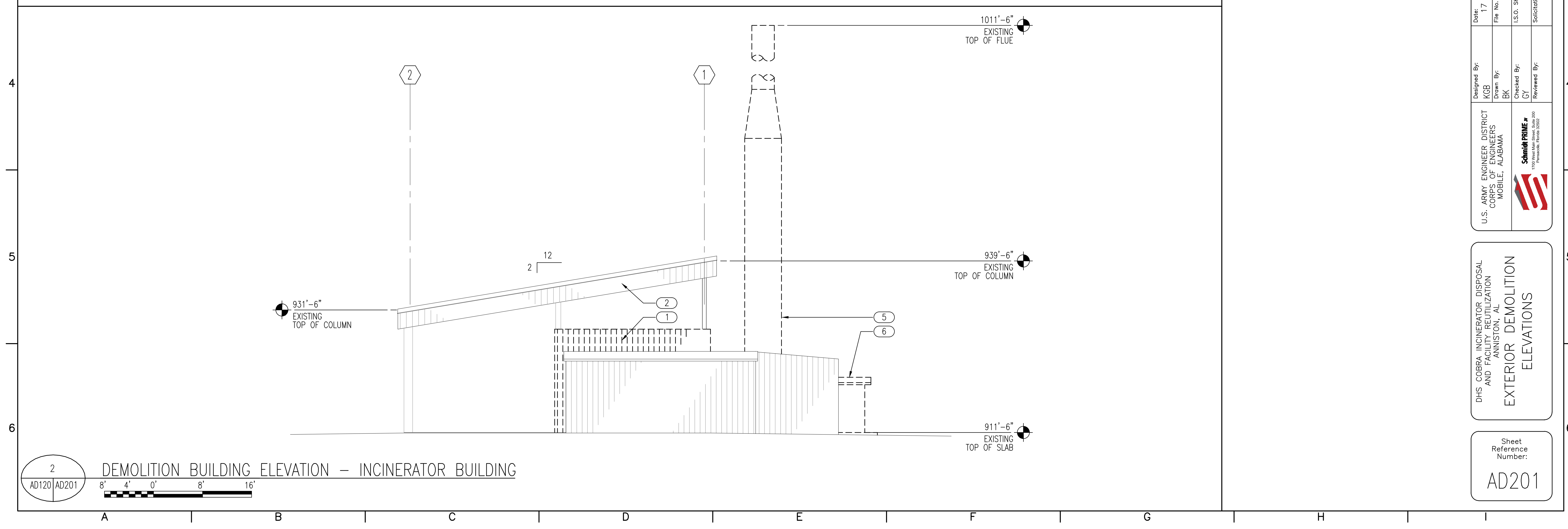


1 DEMOLITION BUILDING ELEVATION - INCINERATOR BUILDING  
 AD120 | AD201  
 8' 4' 0' 8' 16'

- ### KEYNOTES
- 1 REMOVE EXISTING METAL WALL PANELS.
  - 2 EXISTING METAL WALL PANEL TO REMAIN.
  - 3 EXISTING CMU KNEE WALL TO REMAIN.
  - 4 REMOVE AND REPLACE 25% OF EXISTING WALL PANELS THAT ARE DAMAGED OR CONTAIN HOLES.
  - 5 DEMOLISH EXISTING INCINERATOR FLUE.
  - 6 DEMOLISH EXISTING EQUIPMENT BUILDING IN ITS ENTIRETY.
  - 7 DEMOLISH EXISTING STORAGE SHED (BID OPTION 2).
  - 8 REMOVE PORTION OF EXISTING METAL PANEL AND FRAMING TO ACCOMMODATE NEW DOOR, SEE NEW WORK PLANS FOR ADDITIONAL INFORMATION.



Symbol	Description	Date	Approved
1	AMENDMENT 0002	APRIL 2026	



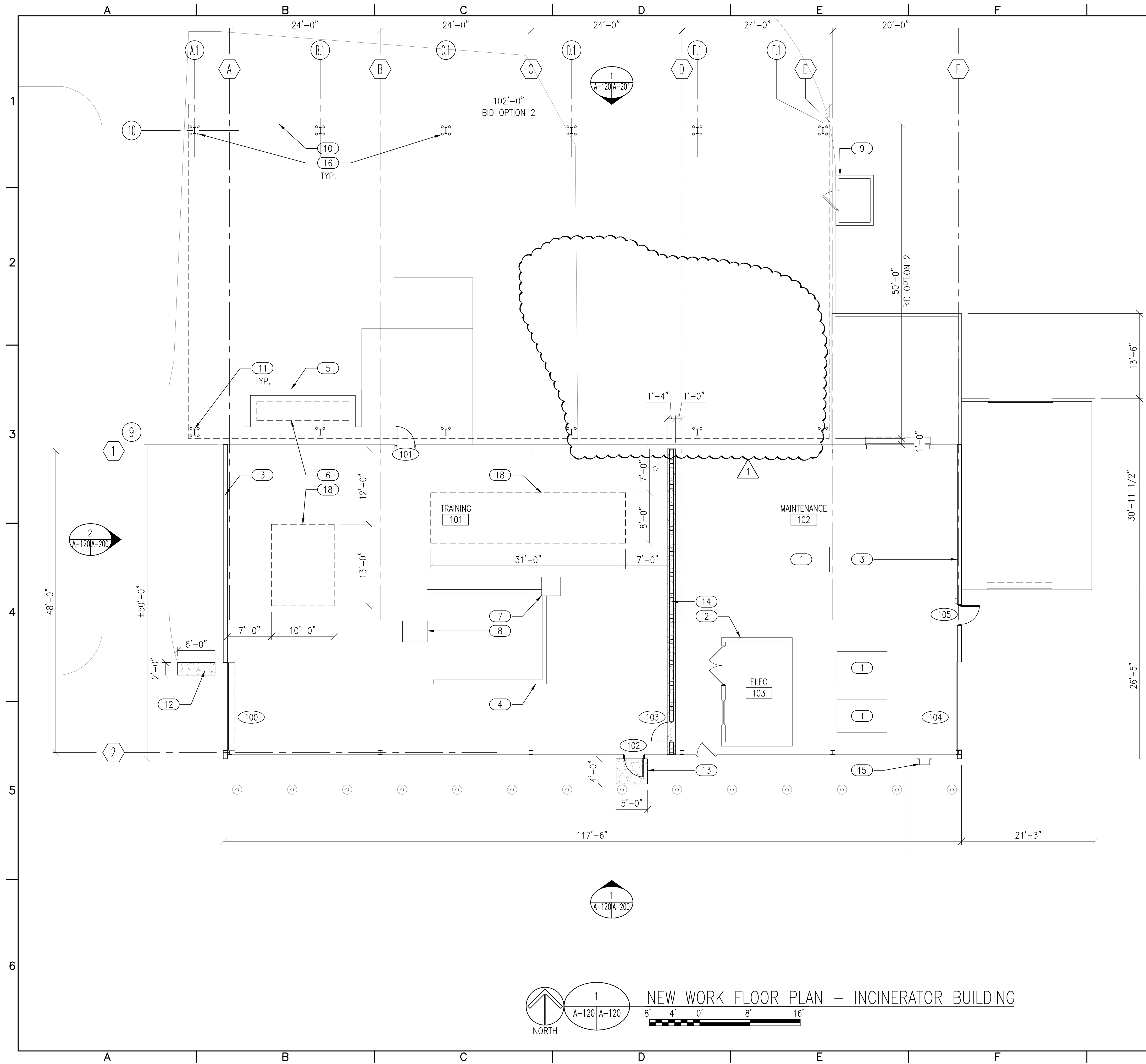
2 DEMOLITION BUILDING ELEVATION - INCINERATOR BUILDING  
 AD120 | AD201  
 8' 4' 0' 8' 16'

Designed By: KGB	Date: 17 FEB 2025
Drawn By: BK	File No.:
Checked By: GY	I.S.O. Sheet File Name:
Reviewed By:	Solicitation Number:



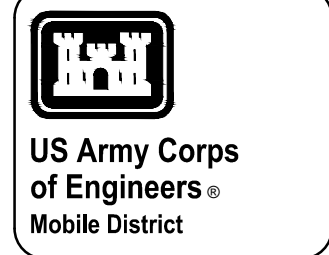
DHS COBRA INCINERATOR DISPOSAL AND FACILITY REUTILIZATION ANNISTON, AL  
 EXTERIOR DEMOLITION ELEVATIONS

Sheet Reference Number:  
 AD201



**KEYNOTES**

- 1 EXISTING EQUIPMENT TO REMAIN.
- 2 EXISTING CMU STRUCTURE TO REMAIN.
- 3 PROVIDE NEW PAINTED STEEL WALL GIRTS & PREFINISHED METAL WALL PANEL TO MATCH EXISTING.
- 4 EXISTING TRENCH TO REMAIN.
- 5 EXISTING CMU KNEE WALL.
- 6 EXISTING GAS PIPING.
- 7 EXISTING SUMP.
- 8 FILL EXISTING 9" DEEP PIT W/ CONCRETE.
- 9 EXISTING MODULAR BUILDING.
- 10 OUTLINE OF NEW CANOPY ABOVE (BID OPTION 2).
- 11 NEW PAINTED STEEL COLUMN, TYP. (BID OPTION 2).
- 12 NEW 6" CONCRETE DRIVE EXTENSION.
- 13 NEW 4" CONCRETE PAD.
- 14 8" CMU WALL TO 10'-0" A.F.F. WITH METAL STUDS ABOVE AND SMOOTH METAL LINER PANELS EACH SIDE TO DECK ABOVE.
- 15 NEW OSHA COMPLIANT LADDER WITH FALL PROTECTION SYSTEM AND LOCKABLE DOOR PANEL AT BOTTOM OF LADDER.
- 16 CONCRETE FILLED PAINTED STEEL BOLLARD, TYP. (BID OPTION 2)
- 17 NOT USED.
- 18 APPROXIMATE OUTLINE OF TRAINING PROP.



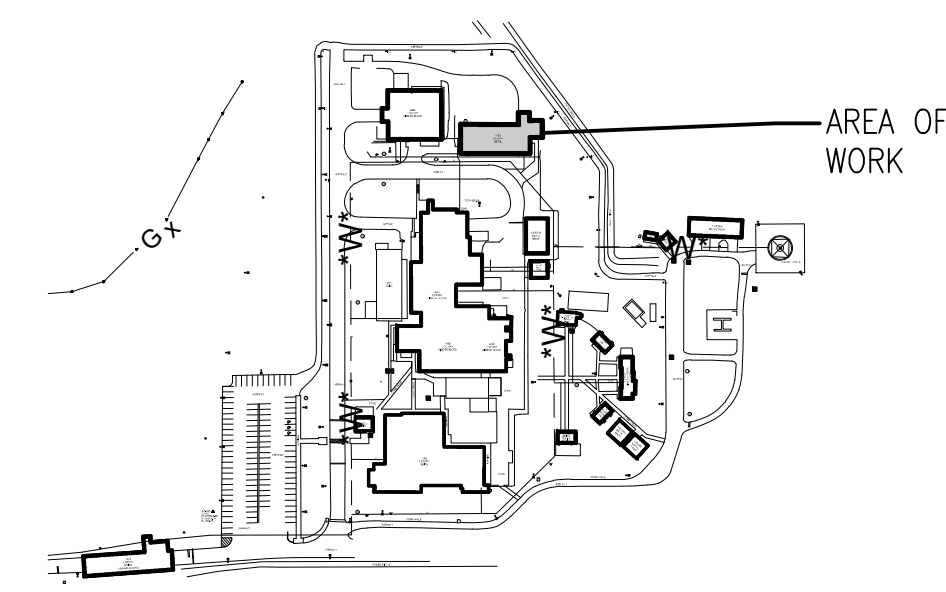
Symbol	Description	Date	Approved
1	AMENDMENT 0002	APRIL 2026	

Designed By:	KGB	Date:	17 FEB 2025
Drawn By:	BK	File No.:	
Checked By:	GT	I.S.O. Sheet File Name:	
Reviewed By:		Solicitation Number:	

U.S. ARMY ENGINEER DISTRICT  
CORPS OF ENGINEERS  
MOBILE, ALABAMA

Schmid PAULIE & ASSOCIATES  
10000 Highway 202  
Birmingham, AL 35243

**KEY PLAN**



DHS COBRA INCINERATOR DISPOSAL AND FACILITY REUTILIZATION ANNISTON, AL  
**NEW WORK FLOOR PLAN**

Sheet Reference Number:  
**A-120**

**NEW WORK FLOOR PLAN - INCINERATOR BUILDING**

