

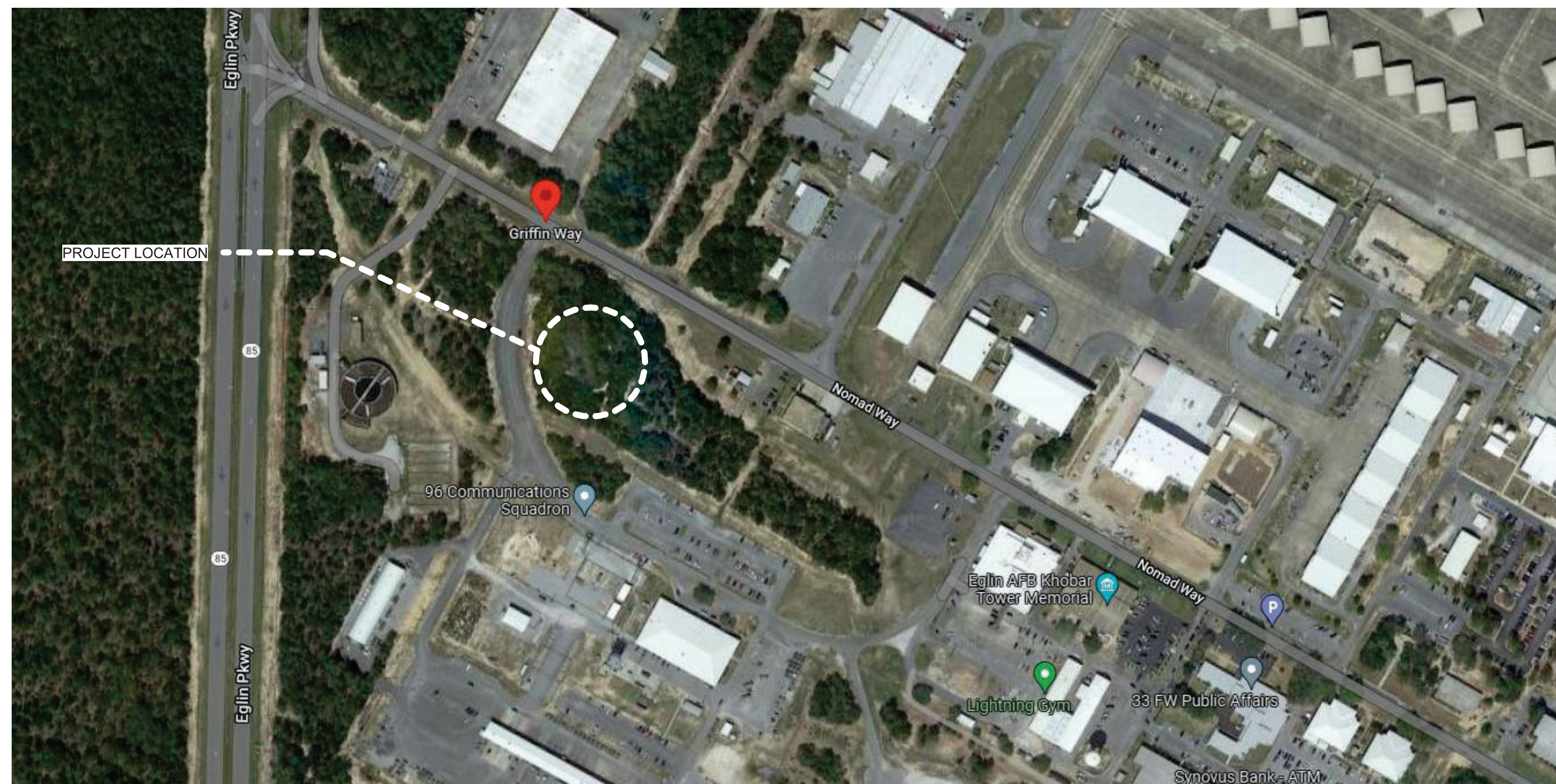


US Army Corps  
of Engineers®  
MOBILE DISTRICT



US Army Corps  
of Engineers®

# EGLIN AFB, FL LRSO HARDWARE SOFTWARE DEVELOPMENT FACILITY TASK ORDER NO.: W9127823F0197



SOLICITATION NO.: W9127826RA012  
CONTRACT NO.: W9127825R0036  
ISSUE DATE: JANUARY 2026  
VOLUME:

MARK	DESCRIPTION	DATE
1	AMND.0001 - ASUS PUMP SELECTION UPDATES	03/23/2026

DESIGNED BY: C. HILBRENNER	ISSUE DATE: JANUARY 2026
DRAWN BY: C. HILBRENNER	SOLICITATION NO.: W9127826RA012
CHECKED BY: D. SOSA	CONTRACT NO.: W9127825R0036
SUBMITTED BY: D. SOSA	
SIZE: ANSI D	

US ARMY CORPS OF ENGINEERS  
MOBILE DISTRICT  
109 ST JOSEPH ST, MOBILE, AL 36602

KNIGHT ARCHITECTS, INC  
4660 VILLAGE CT, ATLANTA, GA 30338

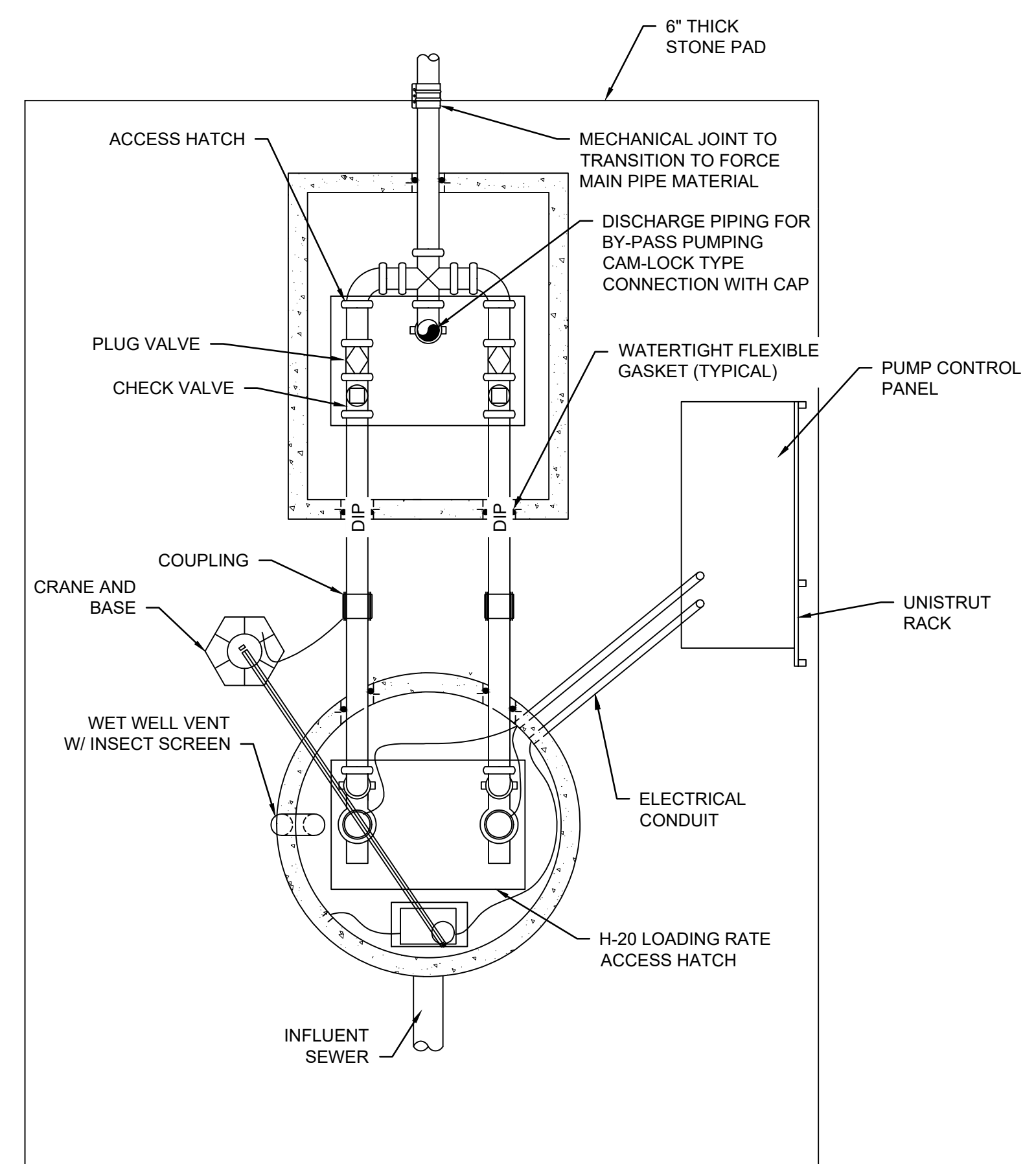
EGLIN AFB, FL  
LRSO HARDWARE SOFTWARE DEVELOPMENT FACILITY  
TASK ORDER NO.: W9127823F0197  
COVER SHEET

SHEET ID

G-001

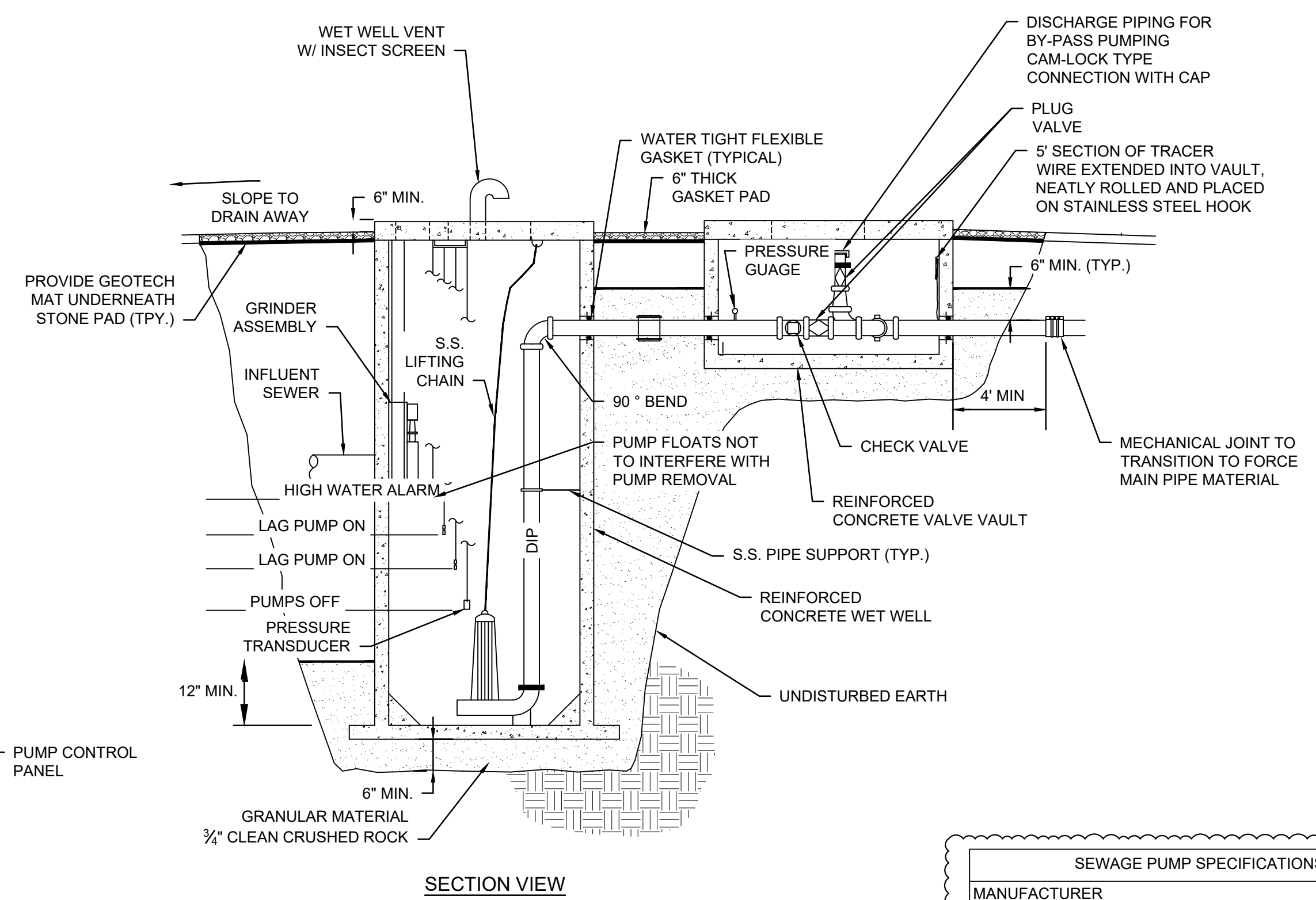
AMENDMENT NO. 0002

P  
N  
M  
L  
K  
J  
H  
G  
F  
E  
D  
C  
B  
A



PLAN VIEW

**D1 LIFT STATION**  
SCALE: N.T.S.



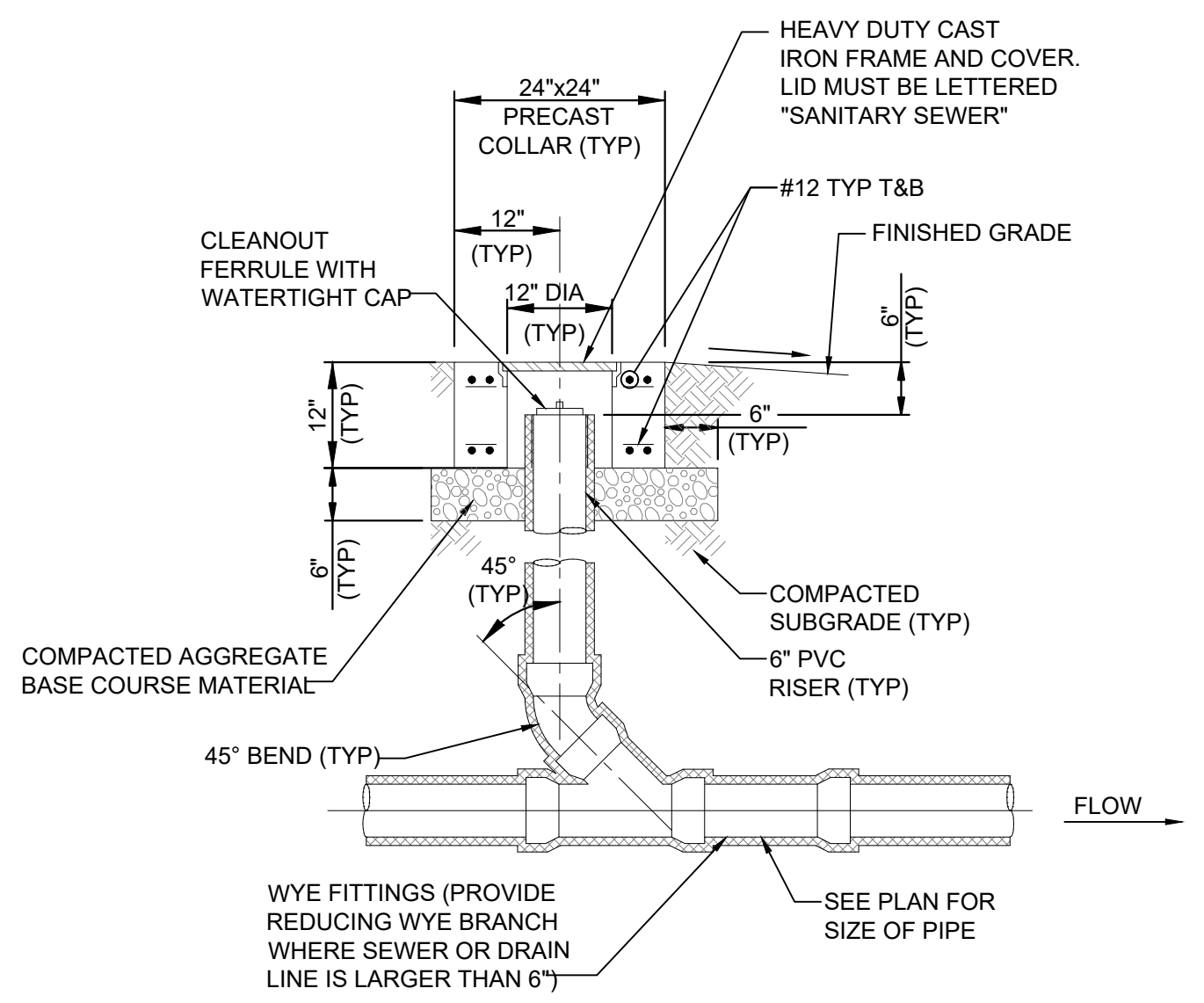
SECTION VIEW

DESIGN PUMP STATION LEVELS	
TOP OF LID:	75.91
BOTTOM OF STATION FLOOR:	62.12
LEAD PUMP ON:	65.99
LAG PUMP ON:	66.49
HIGH FLOAT HI ALARM:	66.99
LIFT STATION DIAMETER:	5 FT

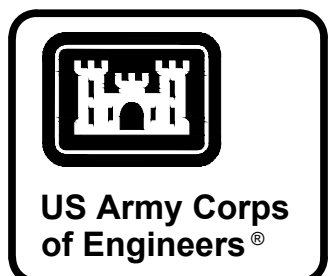
SEWAGE PUMP SPECIFICATIONS	
MANUFACTURER	
TYPE	SUBMERSIBLE
MODEL NO.	
NUMBER REQUIRED	2
HORSE POWER	1.0 HP
DESIGN FLOW (GPM)	110
DESIGN TDH (FT)	13
VOLTAGE	200V
PHASE	3
HERTZ	60
MOTOR SPEED (RPM)	1750 RPM
IMPELLER DIA. (IN)	-
LEVEL CONTROL SYSTEM	FLOAT CONTROL
PUMP WEIGHT	-
RAIL SYSTEM	S.S. GUIDE RAILS
DISCHARGE SIZE	-

**PUMP STATION GENERAL NOTES:**

1. THIS DETAIL IS NOT FOR CONSTRUCTION AND IS TO BE USED FOR TYPICAL LAYOUT AND PUMP STATION REQUIREMENTS ONLY. COMPLETE PUMP STATION DESIGN AND ANALYSIS MUST BE DESIGNED AND SEALED BY A REGISTERED PROFESSIONAL ENGINEER.
2. FOR ELECTRICAL REQUIREMENTS, SEE DETAIL.
3. SUBCONTRACTOR IS RESPONSIBLE FOR MEANS, METHODS AND SEQUENCING OF ALL WORK.
4. SUBCONTRACTOR IS RESPONSIBLE FOR SAFETY OF ALL PERSONS ON SITE. PROVIDE NECESSARY SHORING, BRACING AND DEWATERING OF EXCAVATIONS. PROVIDE TEMPORARY PROTECTION OF EXCAVATIONS.
5. INSTALLATION OF EQUIPMENT IN PUMP STATION AND VALVE PIT MUST BE DONE IN ACCORDANCE WITH CONFINED SPACE ENTRY REGULATIONS.
6. MOUNTING AND SUPPORT OF ALL EQUIPMENT TO BE DONE PER MANUFACTURER'S REQUIREMENTS. DRAWING SHOW GENERAL ARRANGEMENTS ONLY.
7. TWO SETS OF OPERATION AND MAINTENANCE MANUALS FOR ALL EQUIPMENT REQUIRED.
8. THIS DRAWING DOES NOT INCLUDE NECESSARY COMPONENTS FOR CONSTRUCTION SAFETY. ALL CONSTRUCTION MUST COMPLY WITH THE OCCUPATIONAL SAFETY AND HEALTH ACT OF 1970, AS EXPANDED AND AMENDED FROM TIME TO TIME, AND ALL RULES AND REGULATIONS THERETO APPURTENANT.
9. ALL PIPE, VENTS, CLEANOUTS, ETC. MUST PREVENT INFILTRATION AND INFLOW FROM ENTERING THE SANITARY SEWER SYSTEM. IF REQUIRED AS A RESULT OF THE PRESSURE TEST, MODIFICATIONS TO THE EXISTING SYSTEM WILL BE MADE PRIOR TO DISCHARGE TO SANITARY SYSTEM.
10. LIFT STATION BEING SUPPLIED AND CONSTRUCTED BY AUSUS.



**A10 TYPICAL SINGLE CLEANOUT**  
SCALE: N.T.S.



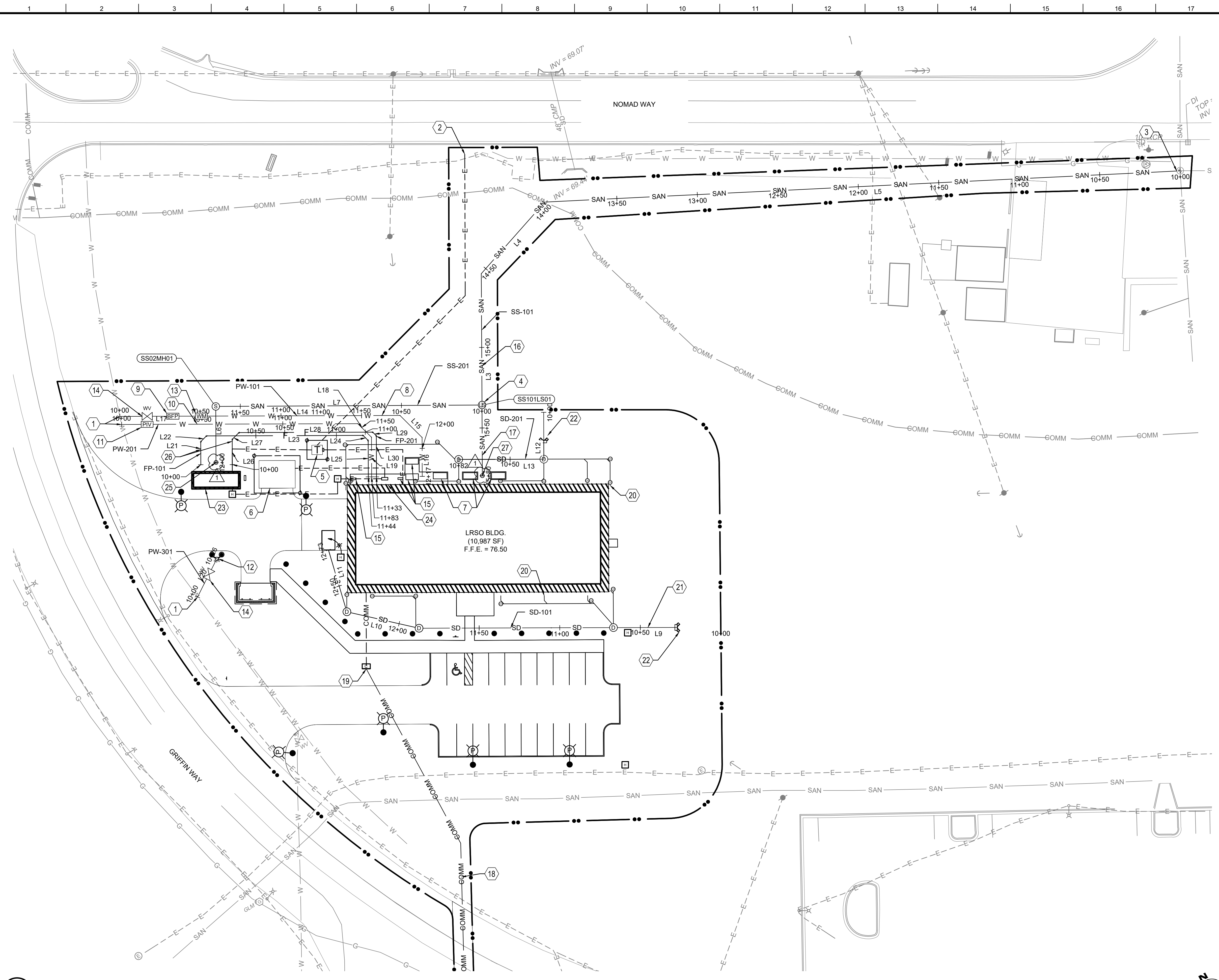
DATE	DESCRIPTION
04/24/26	1 MARK

DESIGNED BY: E. YOTTER	ISSUE DATE: APRIL 2026
CHECKED BY: T. MURPHY	PLAN NO.: W0127823F0187
SUBMITTED BY: D. SOSA	CONTRACT NO.: W0127823R0036
U.S. ARMY CORPS OF ENGINEERS MOBILE DISTRICT 108 ST JOSEPH ST., MOBILE AL 36602	ANSI/D
KNIGHT ARCHITECTS INC. 4660 VILLAGE CT ATLANTA GA 30338	SIZE

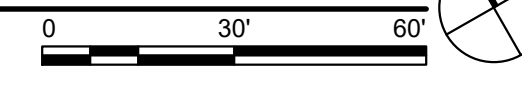
EGUN AFB, FL  
LRSD HARDWARE SOFTWARE DEVELOPMENT FACILITY  
TASK ORDER NO.: W0127823F0187  
UTILITY DETAILS SHEET 1

SHEET ID  
**C-515**

AMD 0002- BIDDING RF



**A1** UTILITY PLAN  
SCALE: 1" = 30'



**GENERAL SHEET NOTES**

- SEE SHEET G-003 FOR PROJECT LOCATION AND VICINITY MAP.
- SEE SHEET C-001 FOR CIVIL ABBREVIATIONS, LEGEND AND NOTES.
- SEE SHEET C-010 FOR HAUL ROUTE AND STAGING AREA.
- HORIZONTAL CONTROL NORTH AMERICAN DATUM 1983 (NAD83) STATE PLANE COORDINATE SYSTEM OF FLORIDA NORTH ZONE US SURVEY FOOT. VERTICAL REFERENCE FRAME IS NORTH AMERICAN VERTICAL DATUM 1988 (NAVD88).
- SEE SHEET V-101 FOR EXISTING CONDITIONS PLAN.
- SEE SHEET CD101 FOR DEMOLITION PLAN.
- SEE SHEET CS101 FOR SITE PLAN.
- SEE SHEET CG101 FOR GRADING PLAN.
- SEE SHEET CG103 FOR EROSION CONTROL PLAN.
- SEE SHEET CG201 FOR STORM DRAIN PROFILES.
- SEE SHEET CG301 THRU CG302 FOR SITE CROSS SECTIONS.
- SEE SHEET CU201 THRU CU203 FOR UTILITY PROFILES.

**SHEET KEYNOTES**

- WATER CONNECTION, (BY ASUS).
- ELECTRICAL CONNECTION, (BY CHELCO).
- CONNECT TO EXISTING SANITARY SEWER, (BY ASUS).
- LIFT STATION, SEE DETAIL D1 ON C-515 (BY ASUS).
- ELECTRICAL PAD AND TRANSFORMER 4' CLEARANCE ON SIDES AND BACK (BY CHELCO).
- GENERATOR PAD, SEE DETAIL B10 ON S-710.
- CONDENSER PAD, SEE STRUCTURAL).
- 2" PVC DOMESTIC WATER LINE BY ASUS, SEE P-102 FOR BUILDING CONNECTION (POINT OF DEMARCATION IS THE BUILDING EDGE).
- 2" BACK FLOW PREVENTER ENCLOSURE BY ASUS.
- 6" PVC C900 FIRE PROTECTION LINE BY ASUS / CONTRACTOR, SEE FX-101 FOR BUILDING CONNECTION (POINT OF DEMARCATION IS THE PIV VALVE).
- POST INDICATOR VALVE BY ASUS IN ACCORDANCE TO EGLIN AFB STANDARDS.
- FIRE HYDRANT, (BY ASUS).
- 2" WATER METER, (BY ASUS).
- WATER VALVE, (BY ASUS).
- CONDENSING UNIT PAD (SEE STRUCTURAL).
- 4" PVC PRESSURIZED SANITARY SEWER LINE, (BY ASUS POINT DEMARCATION IS THE BUILDING EDGE).
- 8" PVC GRAVITY SANITARY SEWER PIPE CONVERTED TO 4" PVC PIPE AT BUILDING CONNECTION. SEE P-103 FOR CONTINUATION (BY ASUS POINT OF DEMARCATION IS THE BUILDING EDGE).
- COMMUNICATION LINE, SEE T-101 FOR BUILDING CONNECTION.
- NEW COMMUNICATIONS HANDHOLE - HH1426
- ROOF DRAIN CONNECTION
- STORM DRAIN LINE, SEE A-101 FOR BUILDING CONNECTION.
- HEADWALL, SEE FDOT DESIGN STANDARDS INDEX NO. 266 FOR 45 DEGREE WINGED CONCRETE ENDWALL DETAIL.
- FIRE PROTECTION BUILDING.
- FIRE DEPARTMENT CONNECTION.
- 6" GRAVITY SANITARY SEWER PIPE CONVERTED TO 3" PVC PIPE AT BUILDING CONNECTION. SEE P-401 FOR CONTINUATION, (BY ASUS).
- 6" PVC FIRE PROTECTION LINE, SEE FX101 FOR CONTINUATION.
- 8" GRAVITY SANITARY SEWER PIPE, (BY ASUS).



DATE	DESCRIPTION
04/24/26	AMD 0001-ASUS PUMP SECTIONS UPDATES
1	MARK

ISSUE DATE: APRIL 2026	DESIGNED BY: E. YOTTER
PROJECT NO. NO. 172823F0187	CHECKED BY: T. MURPHY
CONTRACT NO. W9127823R0036	SUBMITTED BY: D. SOSA
U.S. ARMY CORPS OF ENGINEERS MOBILE DISTRICT 109 ST JOSEPH ST., MOBILE, AL 36602	KNIGHT ARCHITECTS INC. 4660 VILLAGE CT ATLANTA GA 30338

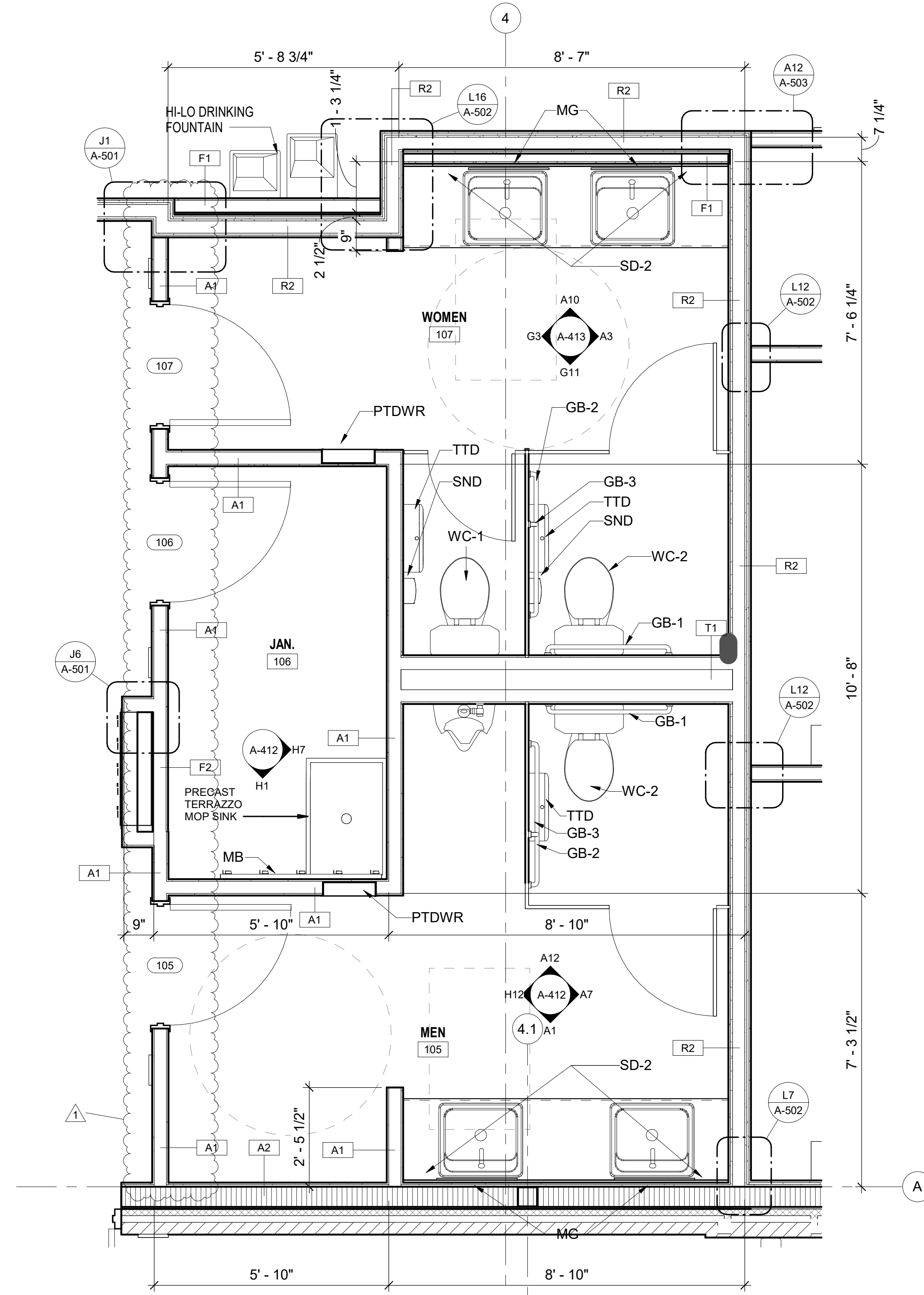
EGLIN AFB, FL  
LRSO HARDWARE SOFTWARE DEVELOPMENT FACILITY  
TASK ORDER NO.: W9127823F0187

UTILITY PLAN

SHEET ID  
**CU101**

AMD 0002- BIDDING RF

P  
N  
M  
L  
K  
J  
H  
G  
F  
E  
D  
C  
B  
A



RESTROOM ACCESSORIES		
BASIS OF DESIGN		
MARK	DESCRIPTION	FINISH
GB-1	36" GRAB BAR	SATIN STAINLESS STEEL FINISH, SLIP-RESISTANT SURFACE.
GB-2	42" GRAB BAR	SATIN STAINLESS STEEL FINISH, SLIP-RESISTANT SURFACE.
GB-3	18" GRAB BAR	SATIN STAINLESS STEEL FINISH, SLIP-RESISTANT SURFACE.
MB	MOP BROOM HOLDER	SATIN STAINLESS STEEL FINISH
MG	MIRROR	GLASS.
PTDWR	COMBINATION PAPER TOWEL DISPENSER/WASTE RECEPTACLE	SATIN STAINLESS STEEL FINISH
SD-2	SOAP DISPENSER AUTOMATIC	SATIN STAINLESS STEEL FINISH
SND	SANITARY NAPKIN DISPOSAL	SATIN STAINLESS STEEL FINISH
TTD	TOILET PAPER DISPENSER	SATIN STAINLESS STEEL FINISH
WC-1	STANDARD FLOOR-MOUNTED WATER CLOSET	
WC-2	ADA FLOOR-MOUNTED WATER CLOSET	

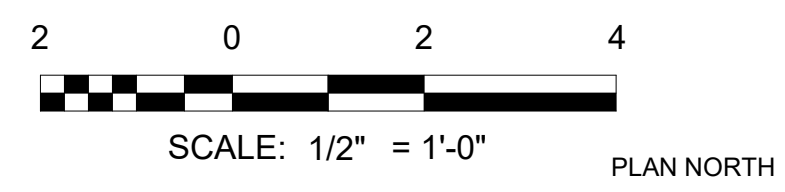
- GENERAL SHEET NOTES:**
- SEE SHEET A-001 FOR GENERAL NOTES, SYMBOLS, AND MATERIALS.
  - SEE SHEET A-002 & A-003 FOR TYPICAL MOUNTING HEIGHTS, LOCATIONS AND DETAILS.
  - SEE SHEET A-004 FOR ADA DETAILS.
  - SEE SHEET A-521 FOR PARTITION TYPES.
  - SEE SHEET A-610 FOR DOOR SCHEDULE AND TYPES.
  - SEE SHEET A-601 FOR ROOM FINISH SCHEDULE.

- SHEET NOTES:**
- DIMENSIONS OF EXTERIOR WALLS ARE TO INSIDE FACE OF STRUCTURE OR EXTERIOR FINISH FACE U.N.O.
  - DIMENSIONS OF INTERIOR WALLS AND PARTITIONS ARE TO FACE OF STUD, U.N.O.
  - DOOR OPENINGS SHALL BE LOCATED 5" FROM FACE OF PARTITION IN STUD PARTITIONS, U.N.O.
  - CONTRACTOR SHALL LOCATE BLOCKING AND BACKING AS REQUIRED FOR WALL MOUNTED EQUIPMENT, CASEWORK/MILLWORK AND FURNISHINGS
  - PROVIDE VERTICAL AND HORIZONTAL CONTROL JOINTS IN GYPSUM BOARD SURFACES AT 30FT OC MAXIMUM, U.N.O.
  - IF GYPSUM BOARD IS ONE SIDE ONLY, PROVIDE HORIZONTAL BRIDGING AT 5FT OC VERTICALLY.
  - FIBER-REINFORCED WATER-RESISTANT GYPSUM BACKING BOARD SHALL BE USED IN ALL OTHER LOCATIONS WHERE TILE IS SCHEDULED. WALLS IN TOILET ROOMS, BEHIND WATER FOUNTAINS AND AROUND CABINETS THAT CONTAIN SINKS WHERE TILE IS NOT SCHEDULED SHALL RECEIVE WATER RESISTANT GYPSUM BOARD. CONTRACTOR IS RESPONSIBLE FOR MAINTAINING THE FIRE AND SOUND RATING AS INDICATED ON THE DRAWINGS FOR WALLS THAT REQUIRE SPECIALTY GYPSUM BOARD PRODUCTS.
  - PROVIDE CONTINUOUS ACOUSTIC OR FIRE RATED SEALANT AROUND THE WALL PERIMETERS, SEAMS AND AT ALL PENETRATIONS IN STC RATED AND FIRE RATED PARTITIONS (I.E. AT ELECTRICAL BOXES, DUCTS, PIPES & TOILET ACCESSORIES).

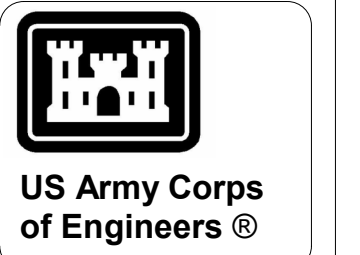
**LEGEND:**

▨ SHEAR WALL

▭ BEARING WALL



**A1 ENLARGED PLAN - RESTROOM**  
SCALE: 1/2" = 1'-0"



MARK	DESCRIPTION	DATE
1	AMD 0002 - BIDDING RFI	04/23/2026

DESIGNED BY: C. RYAN	ISSUE DATE: JANUARY 2026
DRAWN BY: C. RYAN	SOLICITATION NO.: W9127262RA012
CHECKED BY: F. STANKEVICIUS	CONTRACT NO.: W9127262R0036
SUBMITTED BY: D. SOSA	ANSI D

EGLIN AFB, FL  
LRSD HARDWARE SOFTWARE DEVELOPMENT FACILITY  
TASK ORDER NO. - W9127262F0197  
ENLARGED TOILET PLAN

SHEET ID  
**A-401**

**DOOR SCHEDULE**

MARK	TYPE	PANEL				FRAME			DETAILS			FUNCTION	FIRE RATING	STC RATING	HARDWARE	REMARKS
		WIDTH	HEIGHT	MATL.	FIN.	TYPE	MATL.	FIN.	SILL	JAMB	HEAD					
101	(PR) D01	3'-0"	7'-0"	STL	PT	F02	STL	PT	H1/A-612	F11/A-612	F16/A-612	Exterior	-		HW-1	
102	D01	3'-0"	7'-0"	STL	PT	F01	STL	PT	D12/A-611	G12/A-611	G12/A-611	Interior	-	55	HW-5	RF FOIL SHIELDED
103		5'-0"	7'-0"			F01	HM	PT		M7/A-6-11	M1/A-611	Interior	-			FRAMED OPENING
104	D01	3'-0"	7'-0"	STL	PT	F01	STL	PT	K5/A-611	G5/A-611	G5/A-611	Interior	-	55	HW-5	
105	D01	3'-0"	7'-0"	STL	PT	F01	STL	PT	D1/A-611	G1/A-611	K1/A-611	Interior	-		HW-2	UNDERCUT 1" TO ALLOW FOR EXHAUST AIRFLOW
106	D01	3'-0"	7'-0"	STL	PT	F01	STL	PT	D1/A-611	G1/A-611	K1/A-611	Interior	-		HW-3	UNDERCUT 1" TO ALLOW FOR EXHAUST AIRFLOW
107	D01	3'-0"	7'-0"	STL	PT	F01	STL	PT	D1/A-611	G1/A-611	K1/A-611	Interior	-		HW-2	UNDERCUT 1" TO ALLOW FOR EXHAUST AIRFLOW
108	D01	3'-0"	7'-0"	STL	PT	F01	STL	PT	D1/A-611	G1/A-611	K1/A-611	Interior	-		HW-4	
109	D01	3'-0"	7'-0"	STL	PT	F01	STL	PT	D12/A-611	J1/A-612	G12/A-611	Interior	-	55	HW-6	RF FOIL SHIELDED
110	D01	3'-0"	7'-0"	H.M.	PT	F02	H.M.	PT	D5/A-611	G5/A-611	G5/A-611	Interior	-		HW-13	UNDERCUT 1" TO ALLOW FOR EXHAUST AIRFLOW
111	D01	3'-0"	7'-0"	STL	PT	F01	STL	PT	K5/A-611	G5/A-611	G5/A-611	Interior	-	50	HW-11	
112	D01	3'-0"	7'-0"	STL	PT	F01	STL	PT	D5/A-611	G5/A-611	G5/A-611	Interior	-	50	HW-11	
113	D01	3'-0"	7'-0"	STL	PT	F01	STL	PT	D5/A-611	G5/A-611	G5/A-611	Interior	-	50	HW-11	
116A	D01	3'-0"	7'-0"	STL	PT	F01	STL	PT	D12/A-611	G12/A-611	G12/A-611	Interior	45 MIN.	55	HW-6	
116B	D01	3'-0"	7'-0"	STL	PT	F01	STL	PT	D5/A-611	G5/A-611	G5/A-611	Interior	-	55	HW-9	
117	(PR) D01	4'-0"	7'-2"	STL	PT	F01	STL	PT	D12/A-611	G12/A-611	G12/A-611	Interior	45 MIN.	55	HW-8	
118A	D01	3'-0"	7'-0"	STL	PT	F01	STL	PT	D12/A-611	G12/A-611	G12/A-611	Interior	45 MIN.	55	HW-6	
118B	D01	3'-0"	7'-0"	STL	PT	F01	STL	PT	D5/A-611	G5/A-611	G5/A-611	Interior	-	55	HW-9	
119	(PR) D01	4'-0"	7'-2"	STL	PT	F01	STL	PT	D12/A-611	G12/A-611	G12/A-611	Interior	45 MIN.	55	HW-8	
120	(PR) D01	4'-0"	7'-2"	STL	PT	F01	STL	PT	K5/A-611	G5/A-611	G5/A-611	Interior	45 MIN.	55	HW-7	
121A	D01	3'-0"	7'-0"	STL	PT	F01	STL	PT	L1/A-612	H11/A-612	H16/A-612	Exterior	-	55	HW-10	RF FOIL SHIELDED
121B	(PR) D01	4'-0"	7'-0"	STL	PT	F01	STL	PT	L1/A-612	H11/A-612	H16/A-612	Exterior	-	55	HW-12	RF FOIL SHIELDED
122	(PR) D01	3'-0"	7'-0"	STL	PT	F01	STL	PT	H7/A-612	F11/A-612	F16/A-612	Exterior	-		HW-14	
123	(PR) D01	3'-0"	7'-0"	STL	PT	F01	STL	PT	H7/A-612	F11/A-612	F16/A-612	Exterior	-		HW-14	
124	D01	3'-0"	7'-0"	STL	PT	F01	STL	PT	H7/A-612	F11/A-612	F16/A-612	Exterior	-		HW-15	
125	D01	3'-0"	7'-0"	H.M.	PT	F02	H.M.	PT	D5/A-611	G5/A-611	G5/A-611	Interior	-		HW-13	UNDERCUT 1" TO ALLOW FOR EXHAUST AIRFLOW
129	D01	3'-0"	7'-0"	STL	PT	F01	STL	PT	K5/A-611	G5/A-611	G5/A-611	Interior	-	50	HW-11	
130	D01	3'-0"	7'-0"	STL	PT	F01	STL	PT	K5/A-611	G5/A-611	G5/A-611	Interior	-	50	HW-11	
131	D01	3'-0"	7'-0"	STL	PT	F01	STL	PT	K5/A-611	G5/A-611	G5/A-611	Interior	-	55	HW-11	
132	D01	3'-0"	7'-0"	STL	PT	F01	STL	PT	K5/A-611	G5/A-611	G5/A-611	Interior	-	55	HW-11	
133	D01	3'-0"	7'-0"	STL	PT	F01	STL	PT	H7/A-612	F11/A-612	F16/A-612	Exterior	-		HW-15	
134	D01	3'-0"	7'-0"	STL	PT	F01	STL	PT	L1/A-612	H11/A-612	H16/A-612	Exterior	-	55	HW-10	RF FOIL SHIELDED

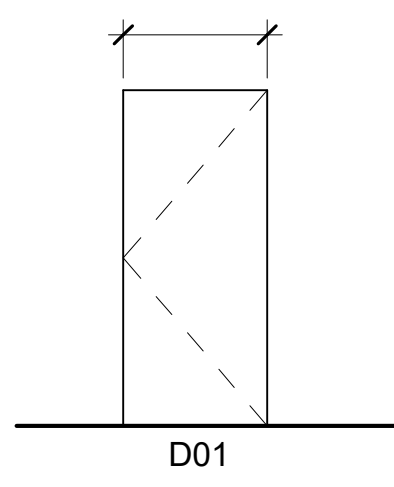
**GENERAL SHEET NOTES:**

- DOOR THICKNESS FOR SPECIALITY DOORS ARE BASED ON THE MANUFACTURER USED FOR THE BASIS OF DESIGN. THE THICKNESS MAY VARY DEPENDING ON THE MANUFACTURER USED.
- ALL NEW DOOR FRAMES SHALL BE PAINTED DR1 ON BOTH SIDE OF DOORS (UNLESS NOTED OTHERWISE).



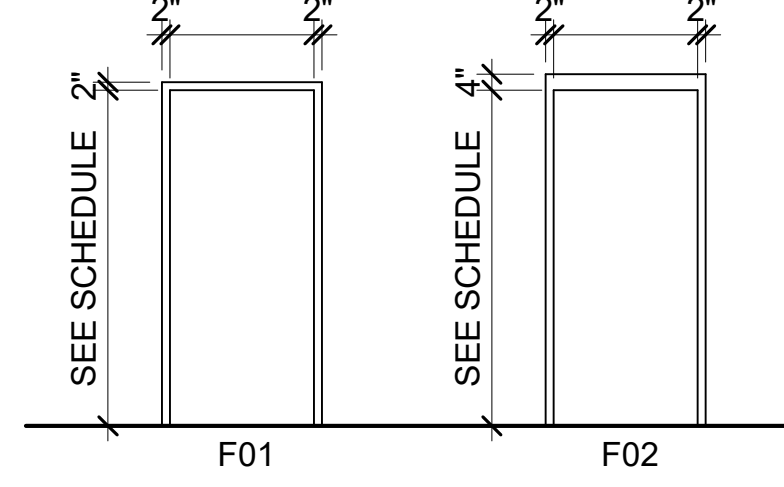
1	AMD 0002 - BIDDING RFI	MARK	DESCRIPTION	DATE
				04/23/2026

SEE SCHEDULE



**E1 DOOR TYPES**  
SCALE: 1/4" = 1'-0"

SEE SCHEDULE SEE SCHEDULE SEE SCHEDULE

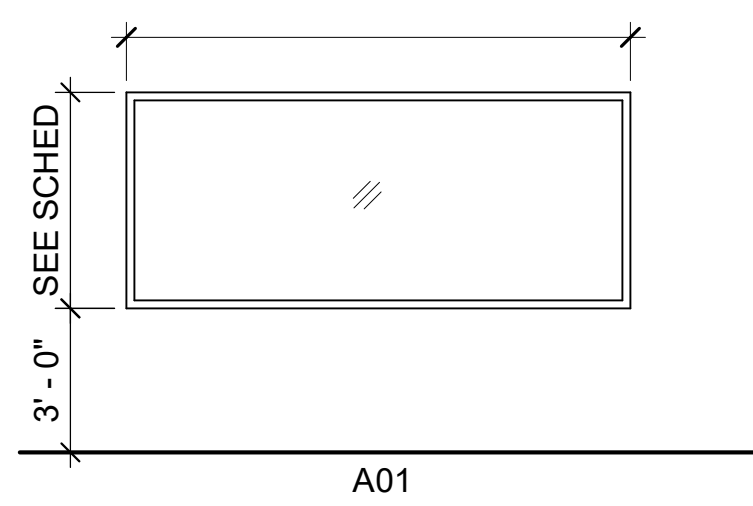


**E4 FRAME TYPES**  
SCALE: 1/4" = 1'-0"

**WINDOW SCHEDULE**

WINDOW NO	TYPE	WINDOW OPENING		FRAME		GLAZING TYPE	DETAILS			INT/ EXT	HEAD HEIGHT	REMARKS
		WIDTH	HEIGHT	FINISH	MATERIAL		HEAD	JAMB	SILL			
117	A01	12'-0"	4'-0"	PT	HM	TEMP	F1/A-612	F1/A-612	F7/A-612	INT	7'-0"	
119	A01	12'-0"	4'-0"	PT	HM	TEMP	F1/A-612	F1/A-612	F7/A-612	INT	7'-0"	

SEE SCHEDULE

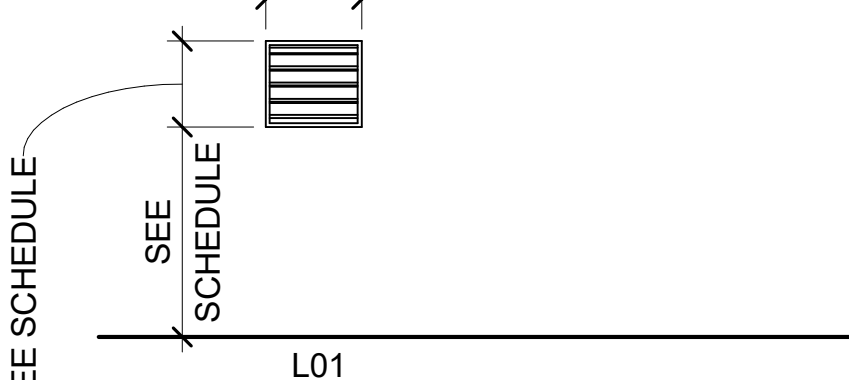


**A1 WINDOW TYPES**  
SCALE: 1/4" = 1'-0"

**LOUVER SCHEDULE**

LOUVER NO	LOUVER SIZE		TYPE	MATERIAL	DETAILS			SILL HEIGHT	REMARKS
	WIDTH	HEIGHT			HEAD	JAMB	SILL		
L117	2'-0"	2'-0"	L01	ALUM	A11/A-612	A1/A-612	A7/A-612	8'-6 3/4"	
L118	1'-0"	1'-0"	L01	ALUM	A11/A-612	A1/A-612	A7/A-612	10'-3 5/64"	
L119	2'-0"	2'-0"	L01	ALUM	A11/A-612	A1/A-612	A7/A-612	8'-8 1/8"	
L121	1'-4"	1'-4"	L01	ALUM	A11/A-612	A1/A-612	A7/A-612	9'-0"	
L122	3'-0"	1'-4"	L01	ALUM	A11/A-612	A1/A-612	A7/A-612	9'-6"	
L123	1'-4"	1'-4"	L01	ALUM	A11/A-612	A1/A-612	A7/A-612	8'-5 27/64"	

SEE SCHEDULE



**A10 LOUVER TYPES**  
SCALE: 1/4" = 1'-0"



DESIGNED BY: C. RYAN	ISSUE DATE: JANUARY 2026
DRAWN BY: C. RYAN	SOLICITATION NO.: W9127262RA012
CHECKED BY: F. STANKEVICIUS	CONTRACT NO.: W9127262R0036
SUBMITTED BY: D. SOSA	

US ARMY CORPS OF ENGINEERS  
MOBILE DISTRICT  
109 ST JOSEPH ST, MOBILE, AL 36602

KNIGHT ARCHITECTS, INC  
4660 VILLAGE CT, ATLANTA, GA 30338

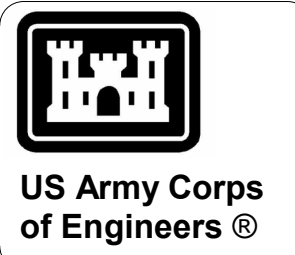
EGLIN AFB, FL  
LRSD HARDWARE SOFTWARE DEVELOPMENT FACILITY  
TASK ORDER NO. - W9127262F0197

DOOR & WINDOW SCHEDULE

SHEET ID  
**A-610**

DOOR HARDWARE SCHEDULE

SET	QUANTITY	COMPONENT	BHMA DESIGNATION	SET	QUANTITY	COMPONENT	BHMA DESIGNATION
<b>HW-1</b>				<b>HW-9</b>			
3 PR		HINGES	A5111 SAFETY STUD	1 1/2 PR		HINGES	A1111 SAFETY STUD
1 EA		LOCKSET- ENTRY FUNCTION	F04	1 EA		LOCKSET- CLASSROOM FUNCTION	F05
1 EA		MANUAL FLUSH BOLT (MOUNTED ON INACTIVE LEAF)	L04081	1 EA		CLOSER	C02021
1 EA		DUSTPROOF STRIKE	L04021	1 EA		WALL STOP	L02011
2 EA		CLOSER	C02011	<b>HW-10</b>			
1 SET		WEATHERSTRIPPING	R5Y195	1 1/2 PR		CAM LIFT HINGES	
2 EA		DOOR SWEEP	R5J415	1 EA		EXIT DEVICE	FF-L-2890C TYPE X
1 EA		OVERHEAD RAIN DRIP PROTECTION		1 EA		AUDIBLE ALARM	
<b>HW-2</b>				1 EA		CLOSER WITH DEAD STOP	C02021
1 1/2 PR		HINGES	A111 SAFETY STUD	1 EA		EXTERIOR DOOR SWEEP	R5J415
1 EA		PULL PLATE	J405	1 EA		THRESHOLD	J36100
1 EA		PUSH PLATE	J301	1 SET		WEATHERSTRIPPING	R5Y195
1 EA		CLOSER	C02011	1 EA		BMS	GFGI
1 EA		FOOT PULL		1 EA		OVERHEAD RAIN DRIP PROTECTION	
1 EA		WALL STOP	L02011	<b>HW-11</b>			
<b>HW-3</b>				1 1/2 PR		CAM LIFT HINGES	
1 1/2 PR		HINGES	A111 SAFETY STUD	1 EA		LOCKSET- CLASSROOM FUNCTION	F05
1 EA		LOCKSET- STOREROOM FUNCTION	F07	1 EA		ELECTRIFIED MORTISE LOCK (FAIL-SECURE) WITH LEVER REX	E59321
1 EA		WALL STOP	L02011	1 EA		CARD READER	GFGI
<b>HW-4</b>				1 EA		BMS	GFGI
1 1/2 PR		HINGES	A111 SAFETY STUD	1 EA		CLOSER WITH DEAD STOP	C02011
1 EA		LOCKSET - PRIVACY FUNCTION	F02	1 EA		THRESHOLD (AS REQUIRED FOR STC)	J52300
1 EA		CLOSER	C02011	1 EA		KILL SWITCH LOCATED ON OPPOSITE WALL FROM DOOR	GFGI
1 EA		WALL STOP	L02011	1 EA		WALL STOP	L02011
<b>HW-5</b>				<b>HW-12</b>			
1 1/2 PR		CAM LIFT HINGES		3 PR		CAM LIFT HINGES	
1 EA		LOCKSET- STOREROOM FUNCTION	F07	1 EA		EXIT DEVICE	FF-L-2890C TYPE IX
1 EA		X10 LOCK (FAIL-SECURE) WITH KEYWAY ON NONSECURE SIDE	FF-L-2890C TYPE II WITH FF-L-2740 COMBINATION	1 EA		AUDIBLE ALARM	GFGI
2 EA		CARD READER WITH KEYPAD (ONE LEVEL 2 FOR ENTRY, ONE LEVEL 1 FOR EXIT)	GFGI	1 EA		ASTRAGAL (MOUNTED ON ACTIVE LEAF)	R5Y635
1 EA		CLOSER	C02011	1 EA		MANUAL FLUSH BOLT (MOUNTED ON INACTIVE LEAF)	L04081
1 EA		THRESHOLD (AS REQUIRED FOR STC)	J52300	1 EA		DUSTPROOF STRIKE	L04021
1 EA		BMS	GFGI	1 EA		THRESHOLD	J36100
1 EA		WALL STOP	L02011	1 SET		WEATHERSTRIPPING	R5Y195
1 EA		ELECTRIFIED MORTISE LOCK (FAIL-SECURE) WITH LEVER REX	E59321	2 EA		DOOR SWEEP	R5J415
<b>HW-6</b>				2 EA		BMS	GFGI
1 1/2 PR		CAM LIFT HINGES		1 EA		OVERHEAD RAIN DRIP PROTECTION	
1 EA		LOCKSET- CLASSROOM FUNCTION	F05	<b>HW-13</b>			
1 EA		ELECTRIFIED MORTISE LOCK (FAIL-SECURE) WITH LEVER REX	E59321	1 1/2 PR		CAM LIFT HINGES	
1 EA		CARD READER	GFGI	1 EA		LOCKSET- STOREROOM FUNCTION	F07
1 EA		BMS	GFGI	1 EA		ELECTRIFIED MORTISE LOCK (FAIL-SECURE) WITH LEVER REX	E59321
1 EA		THRESHOLD (AS REQUIRED FOR STC AND ONLY 118A AND 116A RF SHIELDING)	J52300	1 EA		CARD READER	GFGI
1 EA		CLOSER	C02011	1 SET		BMS	GFGI
1 EA		WALL STOP	L02011	1 EA		THRESHOLD (AS REQUIRED FOR STC)	J52300
<b>HW-7</b>				1 EA		CLOSER	C02011
3 PR		CAM LIFT HINGES		<b>HW-14</b>			
1 EA		LOCKSET- STOREROOM FUNCTION	F07	3 PR		CAM LIFT HINGES	
1 EA		ELECTRIFIED MORTISE LOCK (FAIL-SECURE)	E59321	1 EA		LOCKSET- STOREROOM FUNCTION	F07
1 EA		CARD READER	GFGI	1 EA		BMS	GFGI
1 EA		BMS	GFGI	1 EA		ASTRAGAL (MOUNTED ON ACTIVE LEAF)	R5Y635
2 EA		CLOSER	C02021	1 EA		MANUAL FLUSH BOLT (MOUNTED ON INACTIVE LEAF)	L04251
1 EA		SPLIT ASTRAGAL	PER R5B711 NFPA 80 AND NFPA 105, 630	1 EA		DUSTPROOF STRIKE	L04021
2 EA		AUTOMATIC DOOR BOTTOM	R5Y344	1 EA		THRESHOLD	J36100
1 SET		CODE REQUIRED SMOKE AND SOUND GASKETING	PER R5Y161 NFPA 80 AND NFPA 105	1 SET		WEATHERSTRIPPING	R5Y195
1 EA		THRESHOLD (AS REQUIRED FOR STC)	J52300	2 EA		DOOR SWEEP	R5J415
<b>HW-8</b>				2 EA		CLOSER	C02011
3 PR		CAM LIFT HINGES		1 EA		OVERHEAD RAIN DRIP PROTECTION	
2 EA		LOCKSET- CLASSROOM FUNCTION - HANDLESET INTERIOR ONLY	F05	2 EA		BMS	GFGI
2 EA		CLOSER	C02021	<b>HW-15</b>			
1 EA		ASTRAGAL (ON INACTIVE LEAF)	R5Y636	1 1/2 PR		CAM LIFT HINGES	
1 EA		THRESHOLD (AS REQUIRED FOR STC AND RF SHIELDING)	J52300	1 EA		LOCKSET- STOREROOM FUNCTION	F07
1 EA		MANUAL FLUSH BOLT (MOUNTED ON INACTIVE LEAF)	L04251	1 EA		WALL STOP	L02011
				1 EA		CLOSER	C02011
				1 EA		OVERHEAD RAIN DRIP PROTECTION	
				1 EA		THRESHOLD	J36100
				1 SET		WEATHERSTRIPPING	R5Y195
				1 EA		CLOSER	C02011
				1 EA		BMS	GFGI



04/23/2026	DATE
1	MARK
AMD 0002 - BIDDING RFI	DESCRIPTION

ISSUE DATE: JANUARY 2026	DESIGNED BY: C. RYAN
SOLICITATION NO. : W9127232F0197	DRAWN BY: C. RYAN
CONTRACT NO. : W9127232R0036	CHECKED BY: D. SOSA
	SUBMITTED BY: D. SOSA
	SIZE: ANSI D

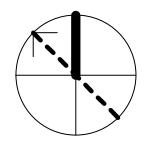
US ARMY CORPS OF ENGINEERS  
MOBILE DISTRICT  
109 ST JOSEPH ST, MOBILE, AL 36602  
KNIGHT ARCHITECTS INC  
4660 VILLAGE CT, ATLANTA, GA 30338

EGLIN AFB, FL  
LRSO HARDWARE SOFTWARE DEVELOPMENT FACILITY  
TASK ORDER NO. - W9127232F0197  
DOOR HARDWARE SCHEDULE

SHEET ID  
**A-631**



PLAN NORTH



1 2 3 4 5 6 7 8 9 10 11 12 13 14 15 16 17 18 19 20

WALL FINISH LEGEND	
CODE	DESCRIPTION
CG	CORNER GUARD
CWT	CERAMIC WALL TILE
EG	END GUARD
FRP	FIBERGLASS REINFORCED PANEL
PT	PAINT
PWT	PORCELAIN WALL TILE

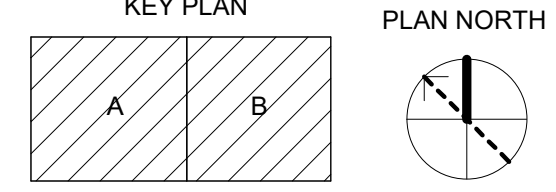
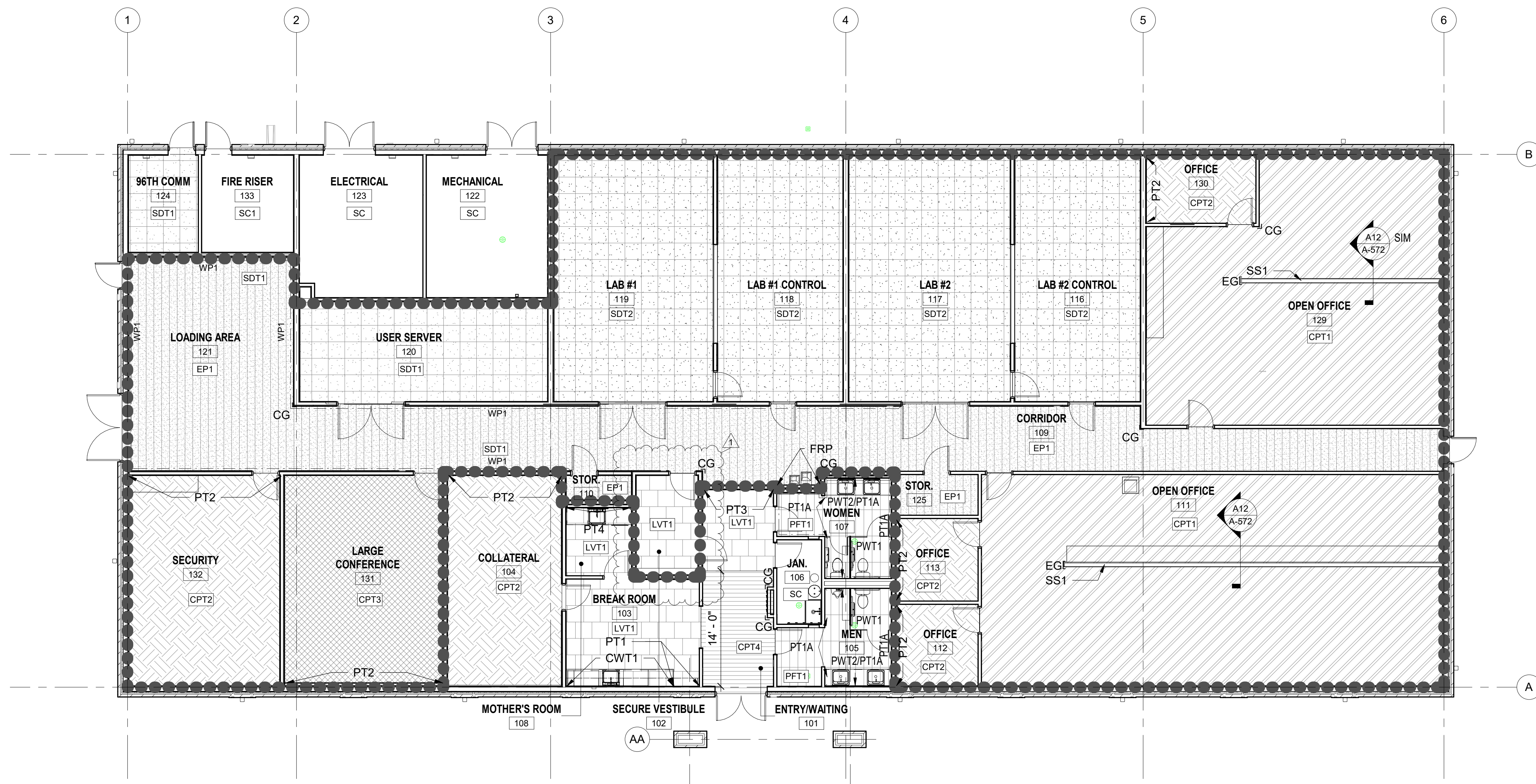
**FINISH LEGEND**

	CARPET TILE, CPT1		EPOXY FLOOR SYSTEM, EP1		EXTENTS OF RF FOIL UNDER FLOOR
	CARPET TILE, CPT2		SEALED CONCRETE, SC		
	CARPET TILE, CPT3		LUXURY VINYL TILE, LVT1		
	PORCELAIN FLOOR TILE, PFT1		FLOOR FINISH TAG		
	STATIC DISSIPATIVE TILE, SDT1		WALL PROTECTION, WP1		
	STATIC DISSIPATIVE TILE, SDT2		CORNER GUARD		
	ENTRANCE MAT, CPT4		CORNER GUARD		

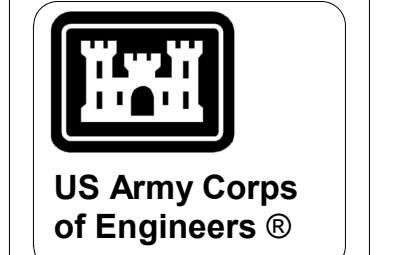


**GENERAL SHEET NOTES**

- SEE SHEET A-001 FOR GENERAL NOTES, ABBREVIATIONS AND SYMBOLS.
- SEE SHEET A-002 TYPICAL MOUNTING HEIGHTS AND LOCATIONS.
- SEE SHEET A-003 FOR TYPICAL MOUNTING HEIGHTS & DETAILS.
- SEE SHEET A-601 FOR MATL FINISH LEGEND.
- SEE SHEET A-602 FOR RM FINISH SCHEDULE.
- ALL WALLS TO BE PAINTED PT1 UNLESS OTHERWISE NOTED.
- INSTALL CPT INSETS AT ALL ELECTRICAL FLOOR BOX LOCATIONS. CPT TO MATCH ADJACENT FLOORING MATERIAL.
- REFER TO STRUCTURAL INTERIOR FINISH COLOR BOARDS IN THE COMPREHENSIVE INTERIOR DESIGN (CID) PACKAGE FOR FINISH COLORS, PATTERNS, TEXTURES, AND EXAMPLES. THE PRODUCTS MUST MEET THE COLOR, TEXTURE, AND PATTERN INDICATED AS WELL AS THE MATL QUALITY AND PERFORMANCE SPECIFIED IN THE APPLICABLE TECHNICAL SPEC SECTIONS.
- NOTIFY ARCHITECT OF SCHEDULED FINISHES THAT ARE UNAVAILABLE OR DISCONTINUED AT THE EARLIEST OPPORTUNITY SUCH THAT A SUBSTITUTION CAN BE SELECTED WITHOUT JEOPARDIZING THE CONSTRUCTION SCHEDULE.
- INSTALL ALL FINISH MATERIALS IN ACCORDANCE WITH THE MANUFACTURER'S RECOMMENDED SPECIFICATIONS, SURFACE PREPARATION, ADHESIVES AND BACKINGS; INCLUDING COATINGS, FLOORING MATERIALS, LAMINATES, ETC.
- FLOOR MATERIAL TRANSITIONS AT DOOR OPENINGS ARE TO BE CENTERED BELOW THE DOOR IN THE CLOSED POSITION, UNLESS NOTED OTHERWISE. SEE ALSO TRANSITION DETAILS ON SHEET I-501.
- PROVIDE TRANSITION STRIPS AT ALL FLOORING MATERIAL CHANGES, UNLESS NOTED OTHERWISE PER DETAIL(S) ON SHEET I-501. RESILIENT TRANSITION STRIPS TO MATCH BASE COLOR UNLESS NOTED OTHERWISE. WHEN PROVIDED, REFER TO PLAN FOR ADDITIONAL DETAIL LOCATIONS.
- FLOAT FLOOR SLAB WHERE REQUIRED FOR A MINIMUM OF 24" TO ACHIEVE A UNIFORM AND FLUSH TRANSITION BETWEEN FLOOR FINISH TYPES.
- ACCESS PANELS, VISIBLE COVERS OR ENCASEMENTS, VISIBLE ELECTRICAL PANELS, ETC. TO BE PAINTED TO MATCH ADJACENT SURFACES.
- ALL INTERIOR WALLS, TRIM AND CEILING FINISHES OF PUBLIC AREAS TO COMPLY WITH CLASS A MATERIAL CLASSIFICATION; FLAME SPREAD RATING 0 TO 25, SMOKE DEVELOPED 200.
- GENERAL CONTRACTOR IS RESPONSIBLE FOR MEETING ALL ACCESSIBILITY REQUIREMENTS FOR ALL FLOORING AND WALL SYSTEMS.
- PROVIDE MOISTURE TESTING OF CONCRETE PER FLOOR MFR PRIOR TO INSTALLATION OF FLOORING SYSTEMS.
- PROVIDE RESILIENT CORNER GUARDS 3 1/2" X 3 1/2" X 48" HIGH CORNER GUARDS AT ALL EXPOSED GYPSUM BOARD CORNERS. END GUARD OF STAINLESS STEEL 3" X 3", 96" HIGH AS INDICATED IN ROOM 129. ALL CORNER AND END GUARDS TO BE SET DIRECTLY ABOVE THE FLOOR BASE.
- ALL FLOORING TO CONTINUE UNDER EQUIPMENT AND CASEWORK.
- REFER TO ELEVATION DRAWINGS A-411 THROUGH A-413 FOR ADDITIONAL FINISH INFORMATION REGARDING CASEWORK, CTOPS, TILE, AND BACKSLASH FINISHES.
- WHERE WALL PANELS, FRP, CORNER GUARDS AND OTHER WALL PROTECTION ACCESSORIES OCCUR AT RF-SHIELDED WALLS, THE INSTALLATION METHOD SHOULD BE AN ADHESIVE ONLY METHOD. IF MECHANICAL FASTENING IS UNAVOIDABLE DUE TO MANUFACTURER REQUIREMENTS AND PERFORMANCE, CONCEALED FASTENERS MUST BE APPROVED TO COORDINATE WITH THE RF-FOIL AND COVERED WITH RF TAPE TO ENSURE A CONSTANT BOUNDARY. APPROVAL OF INSTALLATION METHOD TO BE OBTAINED PRIOR TO WORK.



**A1 LEVEL 1 - FINISH PLAN**  
SCALE: 1/8" = 1'-0"



MARK	DESCRIPTION	DATE
1	AMD 0002 - BIDDING RFI	04/23/2026

DESIGNED BY: E. PETERS, A. GLEND	ISSUE DATE: JANUARY 2026
DRAWN BY: C. SMITH, C. GUTSCH	SOLICITATION NO.: W91272526RA012
CHECKED BY: C. SMITH, B. HULON	CONTRACT NO.: W91272526R0036
SUBMITTED BY: D. SOSA	ANSI D

US ARMY CORPS OF ENGINEERS  
MOBILE DISTRICT  
109 ST. JOSEPH ST., MOBILE, AL 36602

KNIGHT ARCHITECTS, INC.  
4660 VILLAGE CT., ATLANTA, GA 30338

EGLIN AFB, FL  
LRSO HARDWARE SOFTWARE DEVELOPMENT FACILITY  
TASK ORDER NO. - W91272526F0197

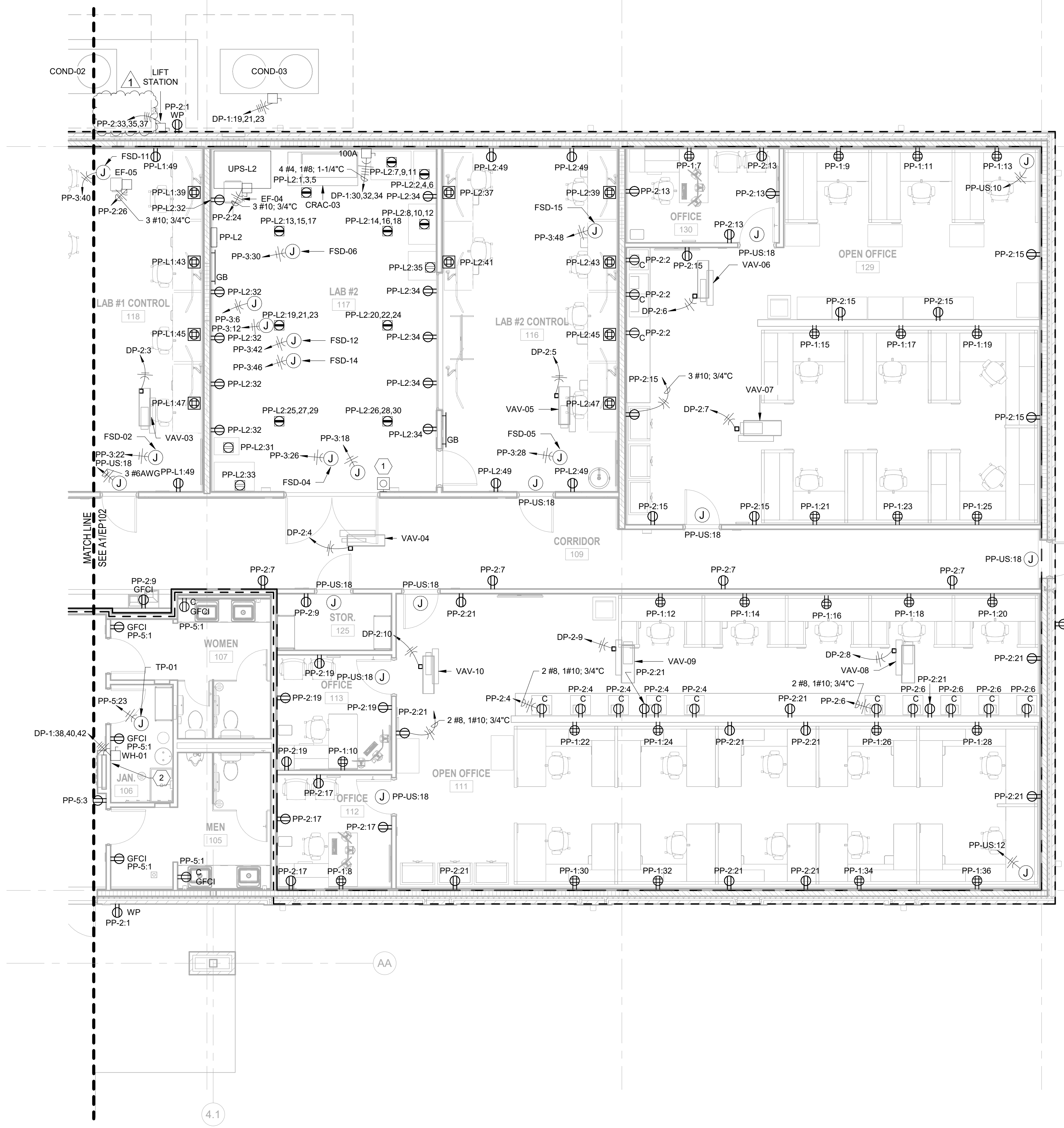
OVERALL INTERIOR FINISH PLAN

SHEET ID  
**I-101**

AMD 0002 - BIDDING RFI | File Path: \\... | Plot Date: 4/22/2026 1:25:34 PM







**GENERAL SHEET NOTES:**

- REFER TO E-001 THRU E-002 FOR ELECTRICAL GENERAL NOTES, ABBREVIATIONS & LEGEND.
- ALL NEW METALLIC CONDUIT CONTAINING ELECTRICAL WIRING PENETRATING A RF SHIELD SHALL BE PROVIDED WITH A DIELECTRIC BREAK AND A GROUND CLAMP WITHIN 6-INCHES OF THE PENETRATION ON THE SECURE SIDE. THE GROUND CLAMP SHALL BE BONDED TO THE BUILDING GROUNDING SYSTEM VIA A #4 AWG COPPER CONDUCTOR. SEE SHEET E-503 FOR DETAILS OF CONDUIT PENETRATIONS THROUGH A RF SHIELD.
- ALL PENETRATIONS THROUGH SECURE PERIMETERS SHALL HAVE DIELECTRIC BREAKS AND MUST BE SEALED TO MATCH THE REQUIRED STC RATING IN ACCORDANCE WITH ICD-705.  
  
ALL PENETRATIONS THROUGH STC RATED WALLS THAT ARE NOT PART OF THE SECURE PERIMETER MUST BE SEALED TO MATCH THE REQUIRED STC RATING IN ACCORDANCE WITH ICD-705. SEE ARCHITECTURAL DRAWINGS FOR WALL TYPES.  
  
SEE SHEET E-504 FOR DETAILS OF CONDUIT PENETRATIONS THROUGH SECURE PERIMETERS AND STC RATED WALLS.
- REFER TO E-601 FOR ELECTRICAL FEEDER SCHEDULE AND ONE-LINE DIAGRAM.
- REFER TO E-602 FOR GROUNDING RISER DIAGRAM.
- SURFACE MOUNT ALL WALL AND CEILING ELECTRICAL DEVICES.
- ALL EXTERIOR DISCONNECTS SHALL BE NEMA 3R RATED.
- FOR FLOOR RECEPTACLES IN LAB SPACES SEE SHEET E-501 DETAIL A1.
- ALL CABLING UNDER RAISED ACCESS FLOORING SHALL BE PLENUM RATED. THIS INCLUDES BUT IS NOT LIMITED TO GOVERNMENT FURNISHED EQUIPMENT PIGTAILS AND PORTABLE CORD AND PLUG SETS.

**LEGEND:**

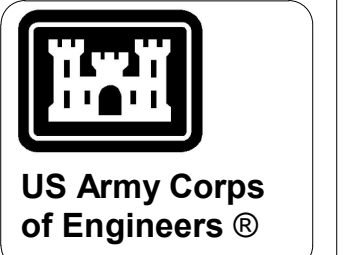
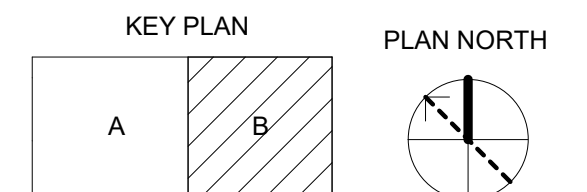
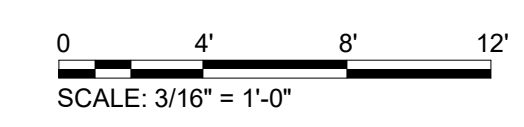
- SECURE AREA PERIMETER
- RF FOIL PERIMETER

**# SHEET KEYNOTES:**

- UPS EMERGENCY POWER OFF MOUNTED AT 48".
- ROUTE CONDUIT FOR WH-01 UNDERGROUND FROM PANELBOARD TO THIS POINT TO AVOID TRAVERSING RF AND SECURE PERIMETER.

**A1 ELECTRICAL POWER PLAN - AREA B**

SCALE: 3/16" = 1'-0"



US Army Corps of Engineers®

MARK	DESCRIPTION	DATE
1	AMD 0002 - BIDDING RFI	04/24/2026

DESIGNED BY: J. ROYBAL	ISSUE DATE: FEBRUARY 2026
DRAWN BY: T. GOODWIN	SOLICITATION NO.:
CHECKED BY: K. BIBEAU	CONTRACT NO.:
SUBMITTED BY: D. SOSA	W81272625R0036
SIZE: ANSI D	

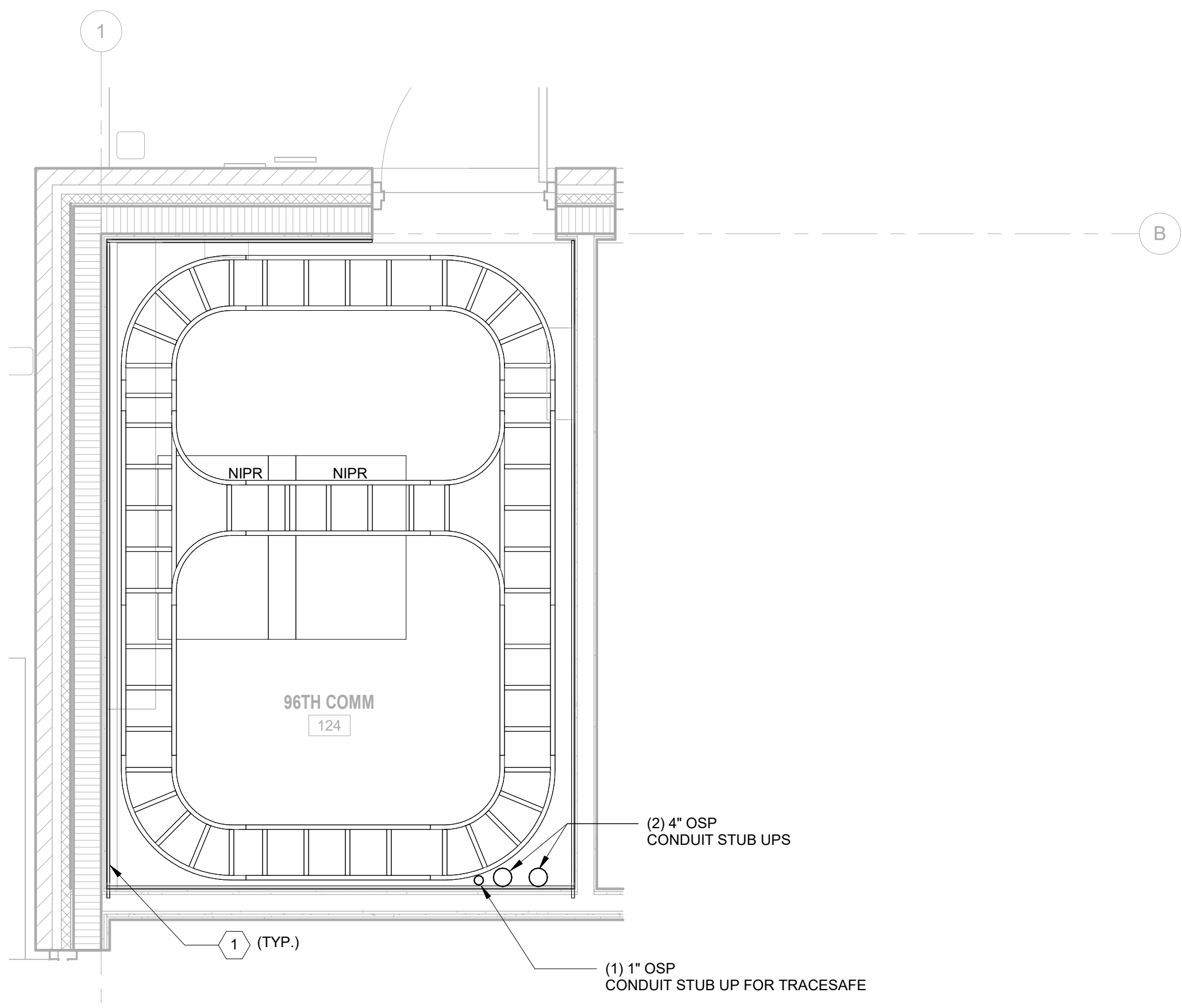
US ARMY CORPS OF ENGINEERS  
MOBILE DISTRICT  
109 ST JOSEPH ST, MOBILE, AL 36602

KNIGHT ARCHITECTS INC  
4660 VILLAGE CT, ATLANTA, GA 30338

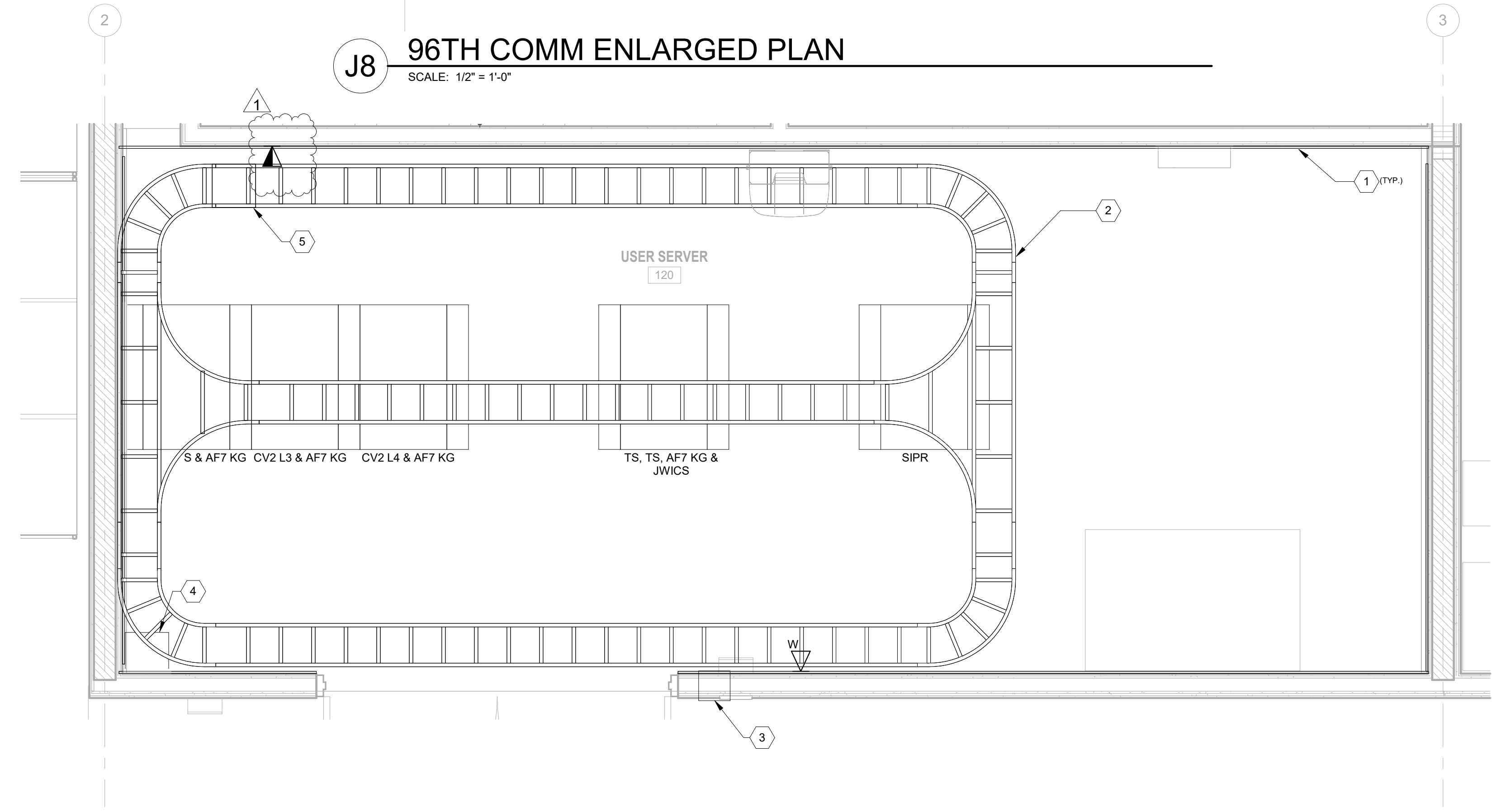
EGLIN AFB, FL  
LRSD HARDWARE SOFTWARE DEVELOPMENT FACILITY  
TASK ORDER NO.: W91272625F0197

**ELECTRICAL POWER PLAN - AREA B**

SHEET ID  
**EP103**



**J8 96TH COMM ENLARGED PLAN**  
SCALE: 1/2" = 1'-0"



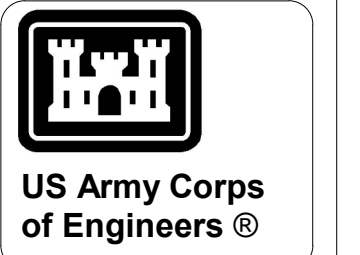
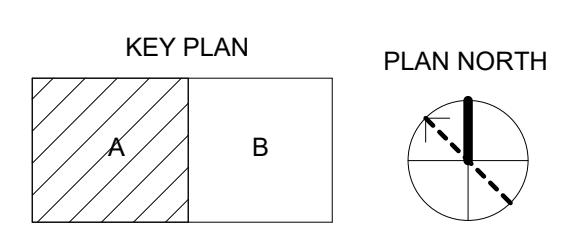
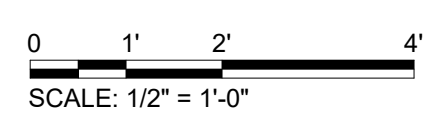
**A5 USER SERVER 120 ENLARGED PLAN**  
SCALE: 1/2" = 1'-0"

**GENERAL NOTES:**

- REFER TO SHEET E-001 FOR ELECTRICAL ABBREVIATIONS. REFER TO T-001 FOR TELECOMMUNICATIONS LEGEND.
- REFER TO T-601 FOR TELECOMMUNICATIONS RISER DIAGRAM.
- REFER TO ARCHITECTURAL DESIGN DRAWINGS FOR SECURE BOUNDARIES REQUIRING DIELECTRIC BREAKS AND PARTITION DETAILS FOR STC RATED WALLS. ALL PENETRATIONS THROUGH SECURE PERIMETER WALLS MUST BE KEPT TO A MINIMUM AND GROUPED WITH OTHER UTILITIES IN ACCORDANCE WITH ICD/CS 705. REFERENCE DETAIL ON E-504 FOR PENETRATIONS THROUGH SECURE PERIMETERS AND STC RATED BOUNDARIES. REFERENCE DETAIL ON E-503 FOR PENETRATIONS THROUGH RF SHIELD.
- ALL PENETRATIONS THROUGH SECURE PERIMETER WALLS MUST BE KEPT TO A MINIMUM AND GROUPED WITH OTHER UTILITIES IN ACCORDANCE WITH ICD/CS 705.
- REFERENCE ELECTRICAL GROUNDING LAYOUT AND DETAILS FOR COMM SPACE GROUNDING.

**# SHEET KEYNOTES:**

- 8'H x 4'W x 3/4" TELECOMMUNICATIONS FIRE TREATED PLYWOOD BACKBOARD, MOUNTED VERTICALLY AT 6" AFF; ALL WALLS.
- 12"W LADDER TYPE CABLE TRAY WITH CENTER DIVIDER. MOUNT 9'-0" AFF MEASURED TO BOTTOM.
- PROVIDE EZ PATH SERIES 44NEZ SMOKE & ACOUSTICAL PATHWAY OR EQUAL SYSTEM CAPABLE OF FLEXIBLE CABLING INSTALLATION AND RE-ENTRY WITH AN STC RATING OF 50.
- COIN WALL MOUNTED RACK.
- KG SHELF.
- TWO (2) 4" OSP CONDUITS, STUBBED UP MINIMUM 3" AFF.



MARK	DESCRIPTION	DATE
1	AMD 0002 - BIDDING RFI	04/23/2026

DESIGNED BY: J. CASEY	ISSUE DATE: FEBRUARY 2026
DRAWN BY: T. GOODWIN	SOLICITATION NO.: W9127232F0197
CHECKED BY: D. FELCH	CONTRACT NO.: W9127232F0197
SUBMITTED BY: D. SOSA	CONTRACT NO.: W9127232F0197
SIZE: ANSI D	

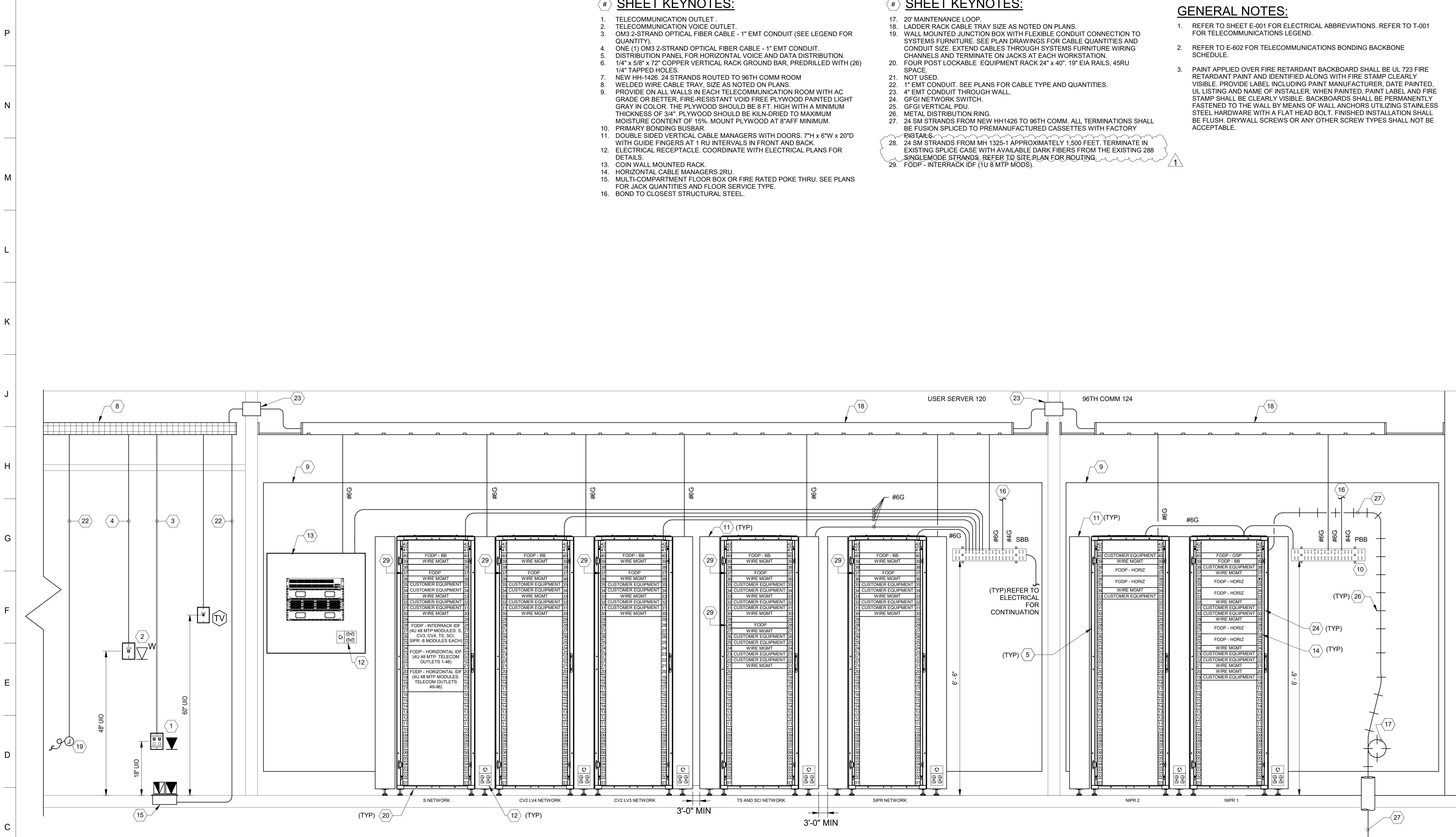
US ARMY CORPS OF ENGINEERS  
MOBILE DISTRICT  
109 ST JOSEPH ST, MOBILE, AL 36602

KNIGHT ARCHITECTS, INC.  
4660 VILLAGE CT, ATLANTA, GA 30338

EGLIN AFB, FL  
LRSD HARDWARE SOFTWARE DEVELOPMENT FACILITY  
TASK ORDER NO.: W9127232F0197

ENLARGED TELECOM ROOMS

SHEET ID  
**T-401**



**C1 TELECOMMUNICATIONS RISER DIAGRAM DETAIL**  
SCALE: N.T.S.

# SHEET KEYNOTES:

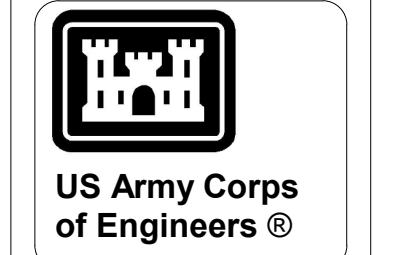
- TELECOMMUNICATION OUTLET.
- TELECOMMUNICATION VOICE OUTLET.
- OM3 2-STRAND OPTICAL FIBER CABLE - 1" EMT CONDUIT (SEE LEGEND FOR QUANTITY).
- ONE (1) OM3 2-STRAND OPTICAL FIBER CABLE - 1" EMT CONDUIT.
- DISTRIBUTION PANEL FOR HORIZONTAL VOICE AND DATA DISTRIBUTION.
- 1/4" x 5/8" x 72" COPPER VERTICAL RACK GROUND BAR, PREDRILLED WITH (26) 1/4" TAPPED HOLES.
- NEW HH-1426. 24 STRANDS ROUTED TO 96TH COMM ROOM
- WELDED WIRE CABLE TRAY, SIZE AS NOTED ON PLANS.
- PROVIDE ON ALL WALLS IN EACH TELECOMMUNICATION ROOM WITH AC GRADE OR BETTER, FIRE-RESISTANT VOID FREE PLYWOOD PAINTED LIGHT GRAY IN COLOR. THE PLYWOOD SHOULD BE 8 FT. HIGH WITH A MINIMUM THICKNESS OF 3/4". PLYWOOD SHOULD BE KILN-DRIED TO MAXIMUM MOISTURE CONTENT OF 15%. MOUNT PLYWOOD AT 8" AFF MINIMUM.
- PRIMARY BONDING BUSBAR.
- DOUBLE SIDED VERTICAL CABLE MANAGERS WITH DOORS. 7"H x 6"W x 20"D WITH GUIDE FINGERS AT 1 RU INTERVALS IN FRONT AND BACK.
- ELECTRICAL RECEPTACLE. COORDINATE WITH ELECTRICAL PLANS FOR DETAILS.
- COIN WALL MOUNTED RACK.
- HORIZONTAL CABLE MANAGERS 2RU.
- MULTI-COMPARTMENT FLOOR BOX OR FIRE RATED POKE THRU. SEE PLANS FOR JACK QUANTITIES AND FLOOR SERVICE TYPE.
- BOND TO CLOSEST STRUCTURAL STEEL.

# SHEET KEYNOTES:

- 20' MAINTENANCE LOOP.
- LADDER RACK CABLE TRAY SIZE AS NOTED ON PLANS.
- WALL MOUNTED JUNCTION BOX WITH FLEXIBLE CONDUIT CONNECTION TO SYSTEMS FURNITURE. SEE PLAN DRAWINGS FOR CABLE QUANTITIES AND CONDUIT SIZE. EXTEND CABLES THROUGH SYSTEMS FURNITURE WIRING CHANNELS AND TERMINATE ON JACKS AT EACH WORKSTATION.
- FOUR POST LOCKABLE EQUIPMENT RACK 24" x 40". 19" EIA RAILS, 45RU SPACE.
- NOT USED.
- 1" EMT CONDUIT. SEE PLANS FOR CABLE TYPE AND QUANTITIES.
- 4" EMT CONDUIT THROUGH WALL.
- GFGI NETWORK SWITCH.
- GFGI VERTICAL PDU.
- METAL DISTRIBUTION RING.
- 24 SM STRANDS FROM NEW HH1426 TO 96TH COMM. ALL TERMINATIONS SHALL BE FUSION SPLICED TO PREMANUFACTURED CASSETTES WITH FACTORY PIGTAILS.
- 24 SM STRANDS FROM MH 1325-1 APPROXIMATELY 1,500 FEET. TERMINATE IN EXISTING SPLICE CASE WITH AVAILABLE DARK FIBERS FROM THE EXISTING 288 SINGLEMODE STRANDS. REFER TO SITE PLAN FOR ROUTING.
- FODP - INTERRACK IDF (1U 8 MTP MODS).

GENERAL NOTES:

- REFER TO SHEET E-001 FOR ELECTRICAL ABBREVIATIONS. REFER TO T-001 FOR TELECOMMUNICATIONS LEGEND.
- REFER TO E-602 FOR TELECOMMUNICATIONS BONDING BACKBONE SCHEDULE.
- PAINT APPLIED OVER FIRE RETARDANT BACKBOARD SHALL BE UL 723 FIRE RETARDANT PAINT AND IDENTIFIED ALONG WITH FIRE STAMP CLEARLY VISIBLE. PROVIDE LABEL INCLUDING PAINT MANUFACTURER, DATE PAINTED, UL LISTING AND NAME OF INSTALLER. WHEN PAINTED, PAINT LABEL AND FIRE STAMP SHALL BE CLEARLY VISIBLE. BACKBOARDS SHALL BE PERMANENTLY FASTENED TO THE WALL BY MEANS OF WALL ANCHORS UTILIZING STAINLESS STEEL HARDWARE WITH A FLAT HEAD BOLT. FINISHED INSTALLATION SHALL BE FLUSH. DRYWALL SCREWS OR ANY OTHER SCREW TYPES SHALL NOT BE ACCEPTABLE.



MARK	DESCRIPTION	DATE
1	AMD 0002 - BIDDING RFI	04/24/2026

DESIGNED BY: J. CASEY	ISSUE DATE: FEBRUARY 2026
DRAWN BY: T. GOODWIN	SOLICITATION NO.: W9127232F0197
CHECKED BY: D. FELCH	CONTRACT NO.: W9127232F0036
SUBMITTED BY: D. SOSA	
SIZE: ANSI D	

US ARMY CORPS OF ENGINEERS  
MOBILE DISTRICT  
109 ST JOSEPH ST, MOBILE, AL 36602

KNIGHT ARCHITECTS, INC  
4660 VILLAGE CT, ATLANTA, GA 30338

EGLIN AFB, FL  
LRSD HARDWARE SOFTWARE DEVELOPMENT FACILITY  
TASK ORDER NO.: W9127232F0197  
TELECOMMUNICATIONS RISER DIAGRAM DETAIL

SHEET ID  
**T-503**

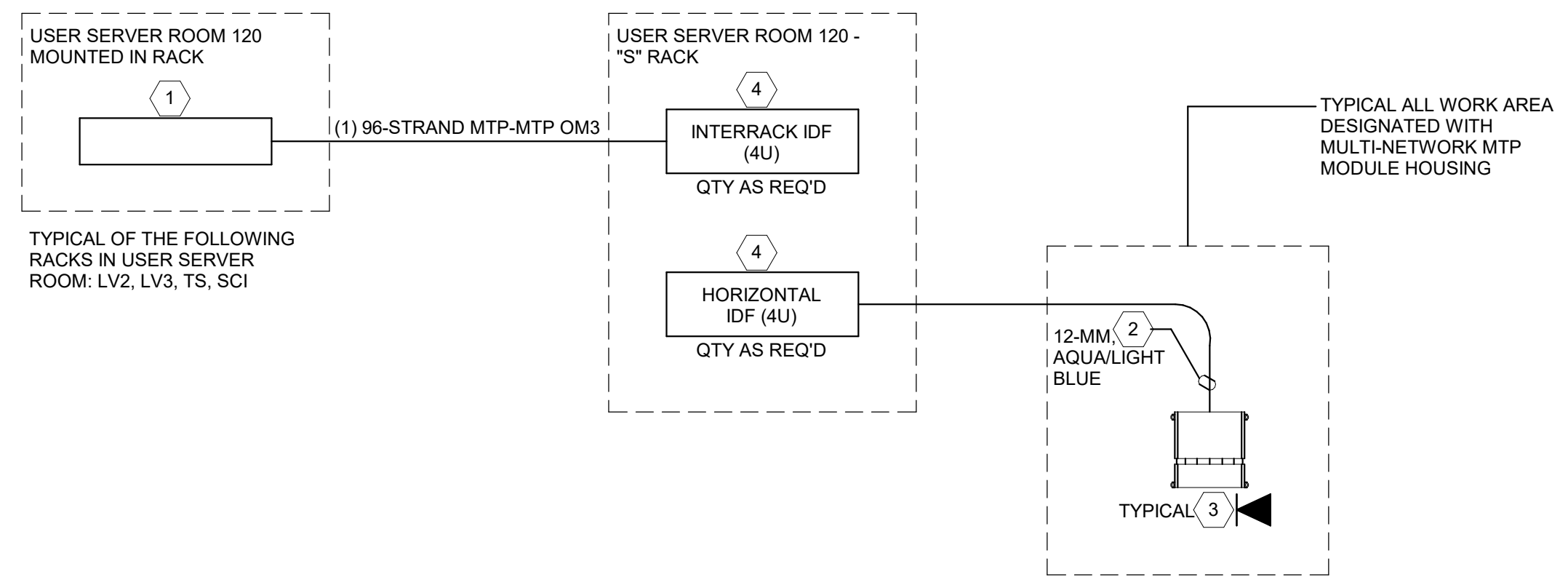
P  
N  
M  
L  
K  
J  
H  
G  
F  
E  
D  
C  
B  
A

**GENERAL NOTES:**

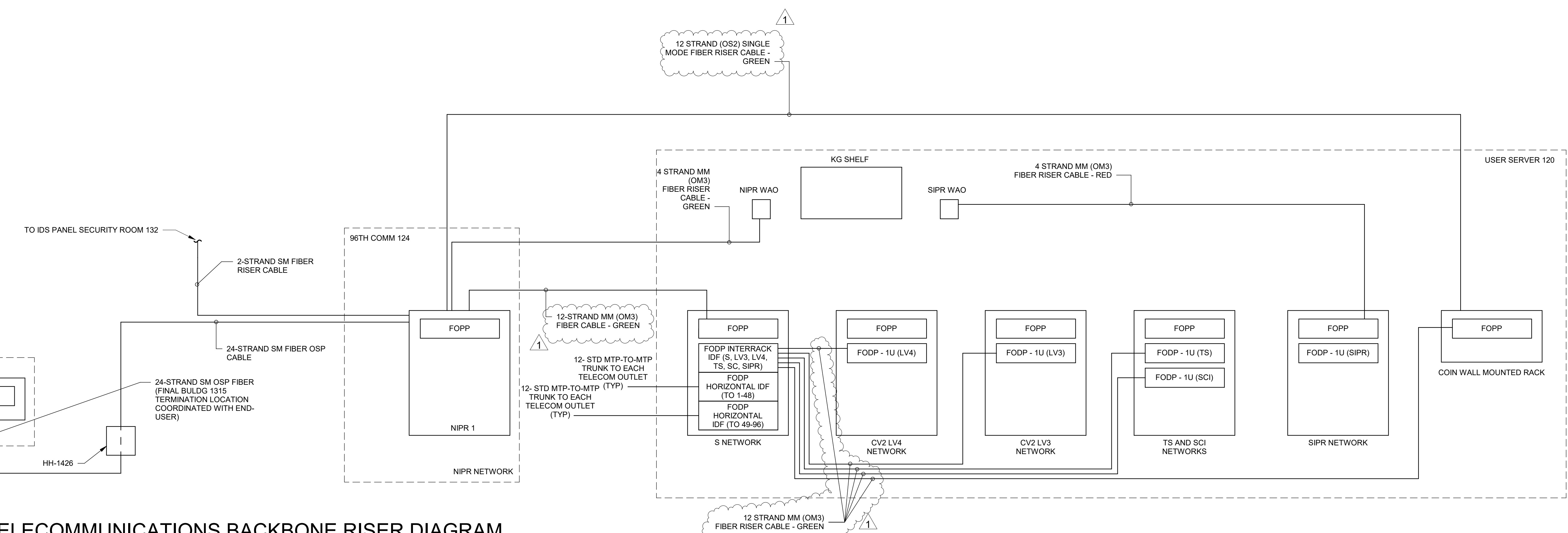
1. REFER TO SHEET E-001 FOR ELECTRICAL ABBREVIATIONS. REFER TO T-001 FOR TELECOMMUNICATIONS LEGEND.
2. REFER TO E-602 FOR TELECOMMUNICATIONS BONDING BACKBONE SCHEDULE.

# **TELECOM SINGLE LINE DIAGRAM KEY NOTES:**

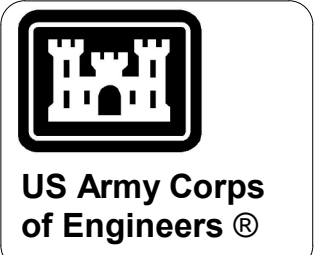
1. 1U MTP HOUSING WITH 96-STRAND FIBER CAPACITY USING ASSOCIATED MTP MODULES REQUIRED FOR 100% TRUNK FIBER TERMINATION PLUS 20% SPARE.
2. 12 FIBER (6 CONNECTIONS) TRUNK FIBER. MTP CONNECTOR TO MTP CONNECTOR, 50 MICRON MULTIMODE OM3. HIGH DENSITY PRETERMINATED OPTICAL CABLE SOLUTION CORNING EDGE TRUNK CABLE.
3. USER WALL / DESK OUTLET. 12 FIBER (6 CONNECTIONS) PRETERMINATED FIBER TO THE DESK MODULE. MTP MODULE SHALL PROVIDE AN INTERFACE FOR OM3 50u MTP TRUNK FIBER AND THE USER INTERFACE SIDE SHALL HAVE LC DUPLEX JACKS.
4. 4U MTP HOUSING WITH 96-STRAND FIBER CAPACITY USING ASSOCIATED MTP MODULES REQUIRED FOR 100% TRUNK FIBER TERMINATION PLUS 20% SPARE. ALSO PROVIDE JUMPER CABLES FOR PATCHING BETWEEN ZONE BOXES.



**J1 WORKSTATION OUTLET - PRE-TERMINATED TELECOM OUTLET CONNECTIVITY DIAGRAM**  
SCALE: N.T.S.



**A1 TELECOMMUNICATIONS BACKBONE RISER DIAGRAM**  
SCALE: N.T.S.



MARK	DESCRIPTION	DATE
1	AMD 0002 - BIDDING RFI	04/23/2026

DESIGNED BY: J. CASEY	ISSUE DATE: FEBRUARY 2026
DRAWN BY: T. GOODWIN	SOLICITATION NO.: W9127232F0197
CHECKED BY: D. FELCH	CONTRACT NO.: W9127232R0012
SUBMITTED BY: D. SOSA	CONTRACT NO.: W9127232R0036
SIZE: ANSI D	

US ARMY CORPS OF ENGINEERS  
MOBILE DISTRICT  
109 ST JOSEPH ST, MOBILE, AL 36602

EGLIN AFB, FL  
LRSD HARDWARE SOFTWARE DEVELOPMENT FACILITY  
TASK ORDER NO.: W9127232F0197

KNIGHT ARCHITECTS, INC.  
4660 VILLAGE CT, ATLANTA, GA 30338

TELECOMMUNICATIONS BACKBONE RISER DIAGRAM

SHEET ID  
**T-601**