

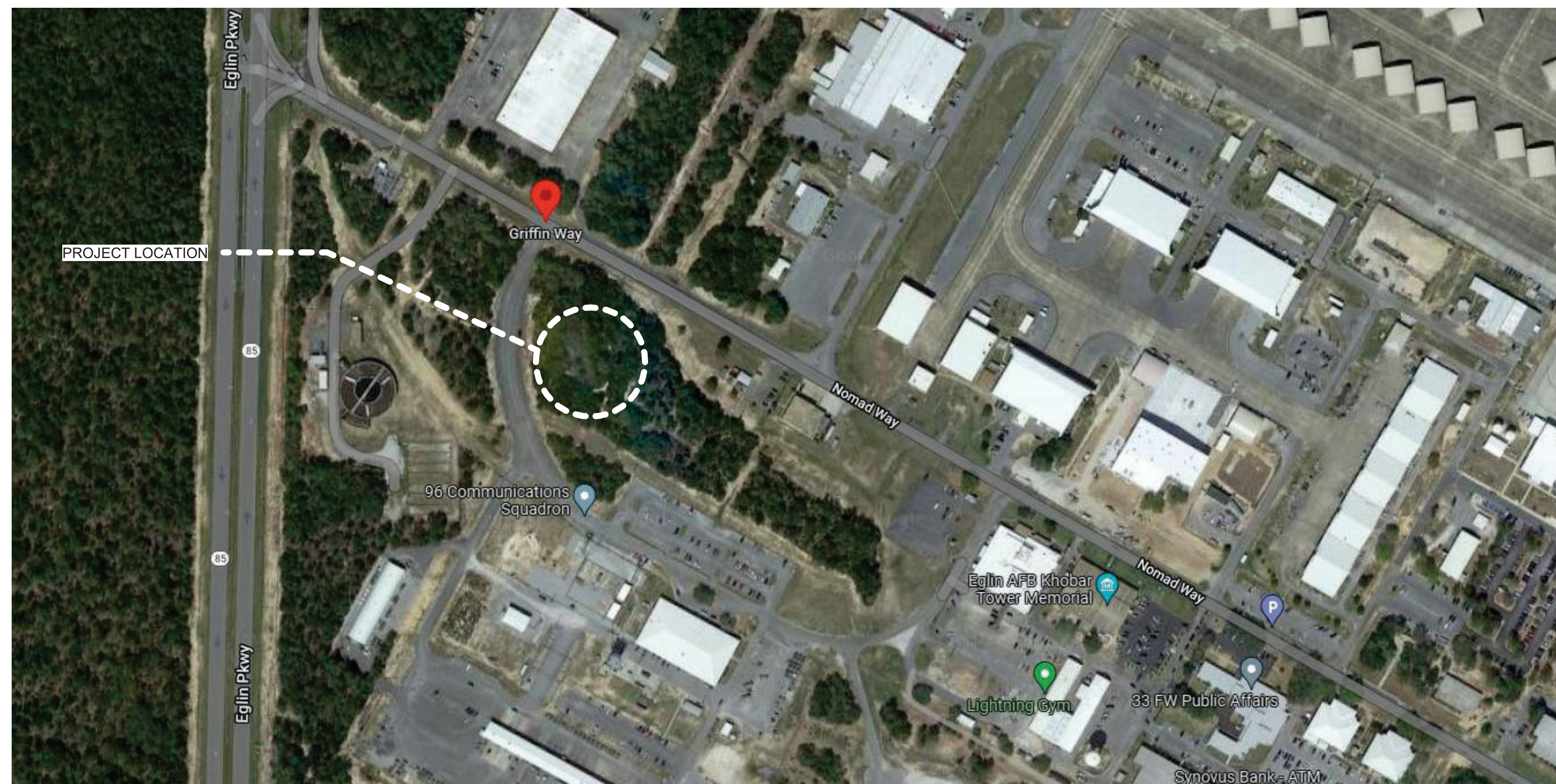


US Army Corps  
of Engineers®  
MOBILE DISTRICT



US Army Corps  
of Engineers®

# EGLIN AFB, FL LRSO HARDWARE SOFTWARE DEVELOPMENT FACILITY TASK ORDER NO.: W9127823F0197



SOLICITATION NO.: W9127826RA012  
CONTRACT NO.: W9127825R0036  
ISSUE DATE: JANUARY 2026  
VOLUME:

MARK	DESCRIPTION	DATE
1	AMND.0001 - ASUS PUMP SELECTION UPDATES	03/23/2026

DESIGNED BY: C. HILBRENNER	ISSUE DATE: JANUARY 2026
DRAWN BY: C. HILBRENNER	SOLICITATION NO.: W9127826RA012
CHECKED BY: D. SOSA	CONTRACT NO.: W9127825R0036
SUBMITTED BY: D. SOSA	
SIZE: ANSI D	

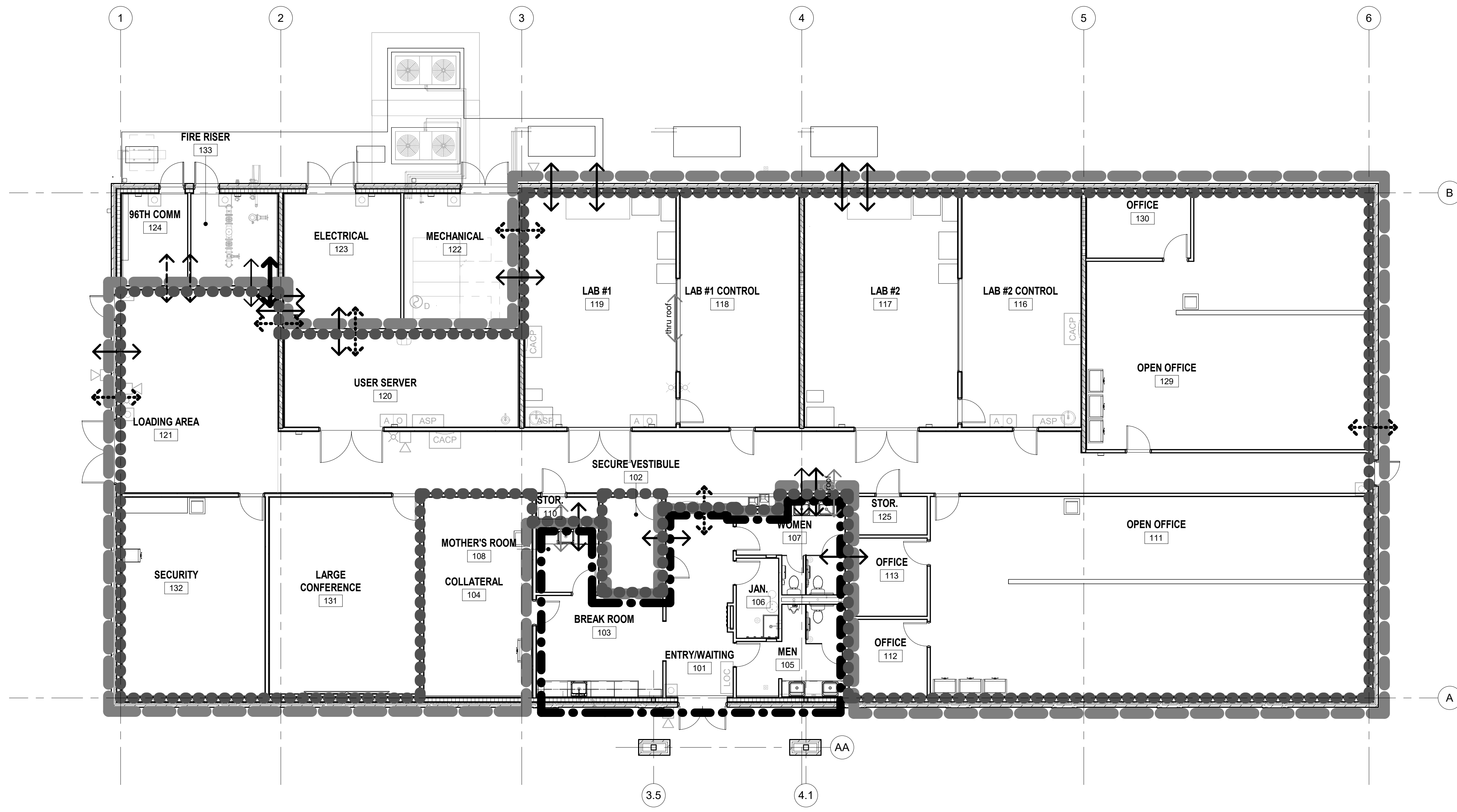
US ARMY CORPS OF ENGINEERS MOBILE DISTRICT 109 ST JOSEPH ST, MOBILE, AL 36602	KNIGHT ARCHITECTS, INC 4660 VILLAGE CT, ATLANTA, GA 30338
-------------------------------------------------------------------------------------	--------------------------------------------------------------

EGLIN AFB, FL  
LRSO HARDWARE SOFTWARE DEVELOPMENT FACILITY  
TASK ORDER NO.: W9127823F0197  
COVER SHEET

SHEET ID

G-001

AMENDMENT NO. 0005

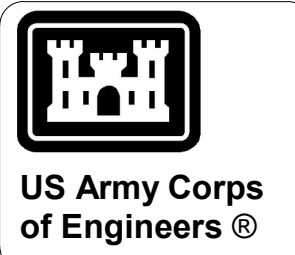


**LEGEND**

- SECURE PERIMETER
- PINK NOISE
- SECURE PERIMETER WALL PENETRATION - FP
- SECURE PERIMETER WALL PENETRATION - PL
- SECURE PERIMETER WALL PENETRATION - ME
- SECURE PERIMETER WALL PENETRATION - EL
- SECURE PERIMETER WALL PENETRATION - COMM
- RF FOIL PERIMETER

**SHEET NOTES:**

1. PROVIDE INFRASTRUCTURE TO SUPPORT PINK NOISE EQUIPMENT FOR EACH ROOM AS DESIGNATED. INFRASTRUCTURE TO BE TERMINATED IN THE SECURITY ROOM. COORDINATE FINAL LOCATION AND HEIGHT OF EQUIPMENT WITH GOVERNMENT PRIOR TO INSTALLATION.



MARK	DESCRIPTION	DATE
1	AMD 0005 - BIDDING RFI	04/21/2026

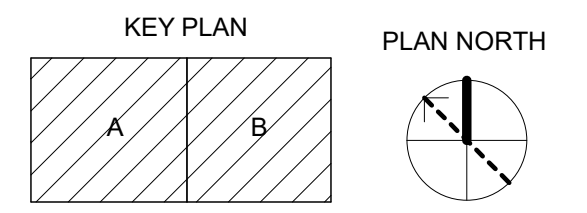
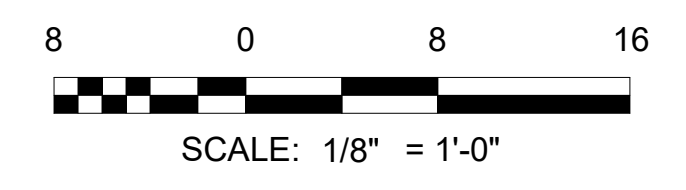
DESIGNED BY: C. RYAN	ISSUE DATE: JANUARY 2026
DRAWN BY: C. RYAN	SOLICITATION NO.: W9127262RA012
CHECKED BY: F. STANKEVICIUS	CONTRACT NO.: W9127262R0036
SUBMITTED BY: D. SOSA	ANSI D

US ARMY CORPS OF ENGINEERS  
MOBILE DISTRICT  
109 ST. JOSEPH ST., MOBILE, AL 36602

KNIGHT ARCHITECTS, INC.  
4660 VILLAGE CT., ATLANTA, GA 30338

EGLIN AFB, FL  
LRSD HARDWARE SOFTWARE DEVELOPMENT FACILITY  
TASK ORDER NO.: W9127262F0197

OVERALL SECURE PERIMETER PLAN



**A1 FLOOR PLAN - SECURE PERIMETER**  
SCALE: 1/8" = 1'-0"

SHEET ID  
**A-102**