

# A New Elevator for Thompson High School

FOR THE

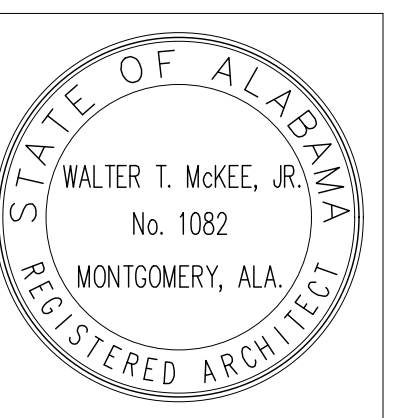
# ALABASTER CITY BOARD of EDUCATION

ALABASTER, ALABAMA



PROJECT NAME  
**A NEW ELEVATOR FOR THOMPSON HIGH SCHOOL**  
1912 WARRIOR PKWY, ALABASTER AL, 35007  
ALABASTER BOARD OF EDUCATION

SHEET TITLE:  
**COVER SHEET**

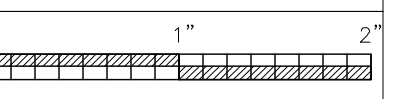


PROJ. MGR.: K SINGLETON  
DRAWN: JPO  
DATE: 6-16-26  
REVISIONS:

JOB NO. **25-305A**

SHEET NO:


**G0.1**



**LOCATION MAP**  
1921 WARRIOR PARKWAY  
Alabaster, Alabama

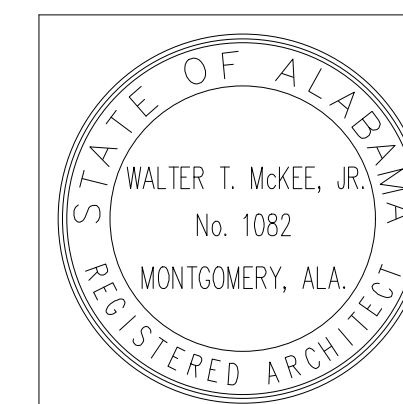
**VICINITY MAP**  
1921 WARRIOR PARKWAY  
Alabaster, Alabama

**CONTACTS**

 <b>OWNER</b> Alabaster City Board of Education 1953 Municipal Way Alabaster, Alabama 35007 Phone: (205) 663.8400		
<b>PROGRAM MANAGER</b> Volkert, Inc. Two North Twentieth Building 2 20th Street North, Suite 300 Birmingham, AL 35203 Phone: (205) 470-4433	<b>ARCHITECTURAL</b> McKee and Associates 631 South Hull Street Montgomery, Alabama 36104 Phone: (334) 834.9933	<b>ELECTRICAL</b> Gunn and Associates 3102 Highway 14 Millbrook, AL 36054 Phone: (334) 285.1273

**INDEX TO DRAWINGS**

GENERAL	
G0.1	COVER SHEET AND INDEX TO DRAWINGS
ARCHITECTURAL	
A1.1	ELEVATOR PLANS & SECTION
ELECTRICAL	
E1.1	FIRST FLOOR LIGHTING, POWER, AND AUXILIARY
E2.1	ELECTRICAL LEGEND LUMINARE SCHEDULE AND FIRE ALARM RISER DIAGRAM

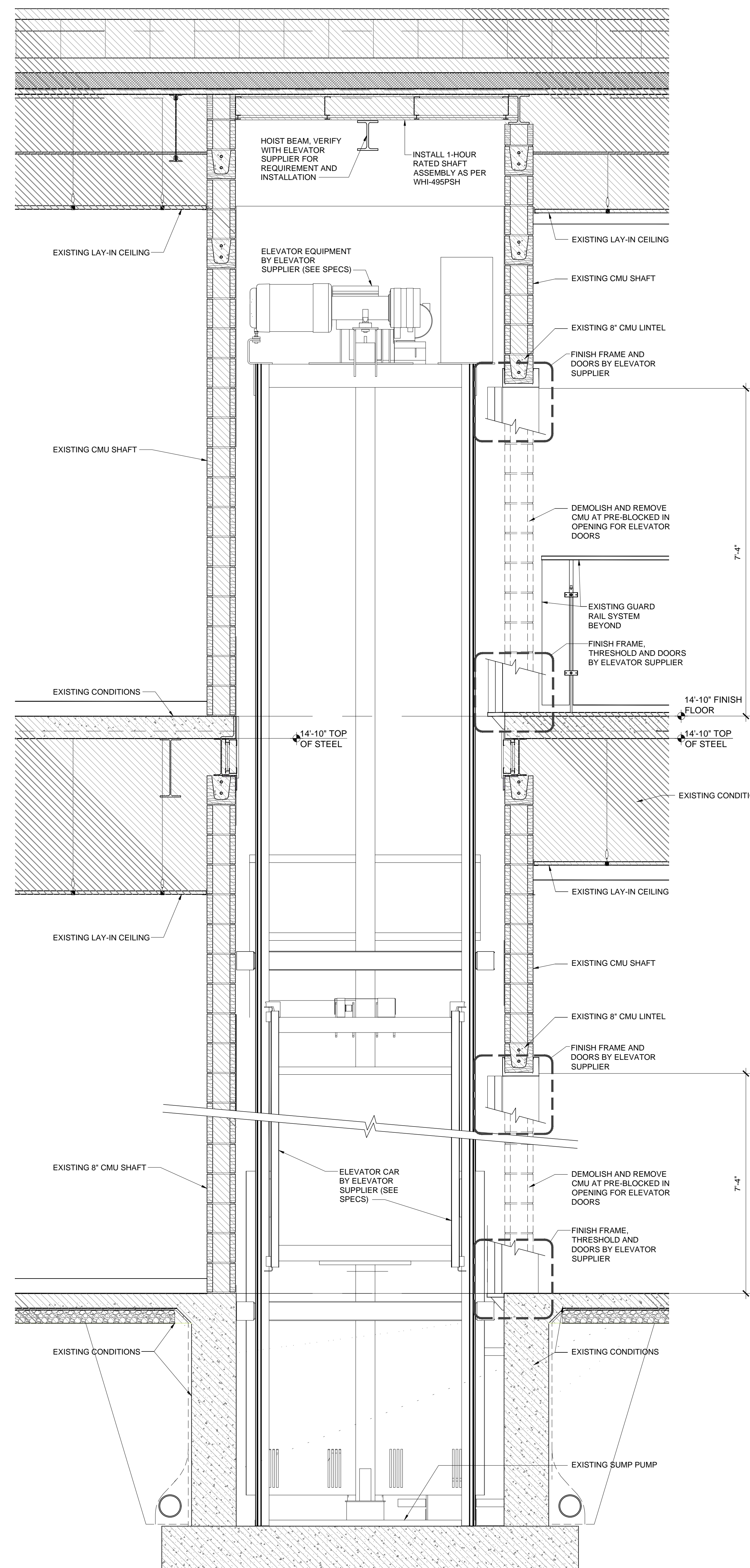
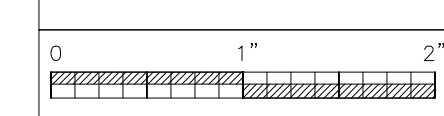


PROJ. MGR.:	K SINGLETON
DRAWN:	JPO
DATE:	6-16-26
REVISIONS:	

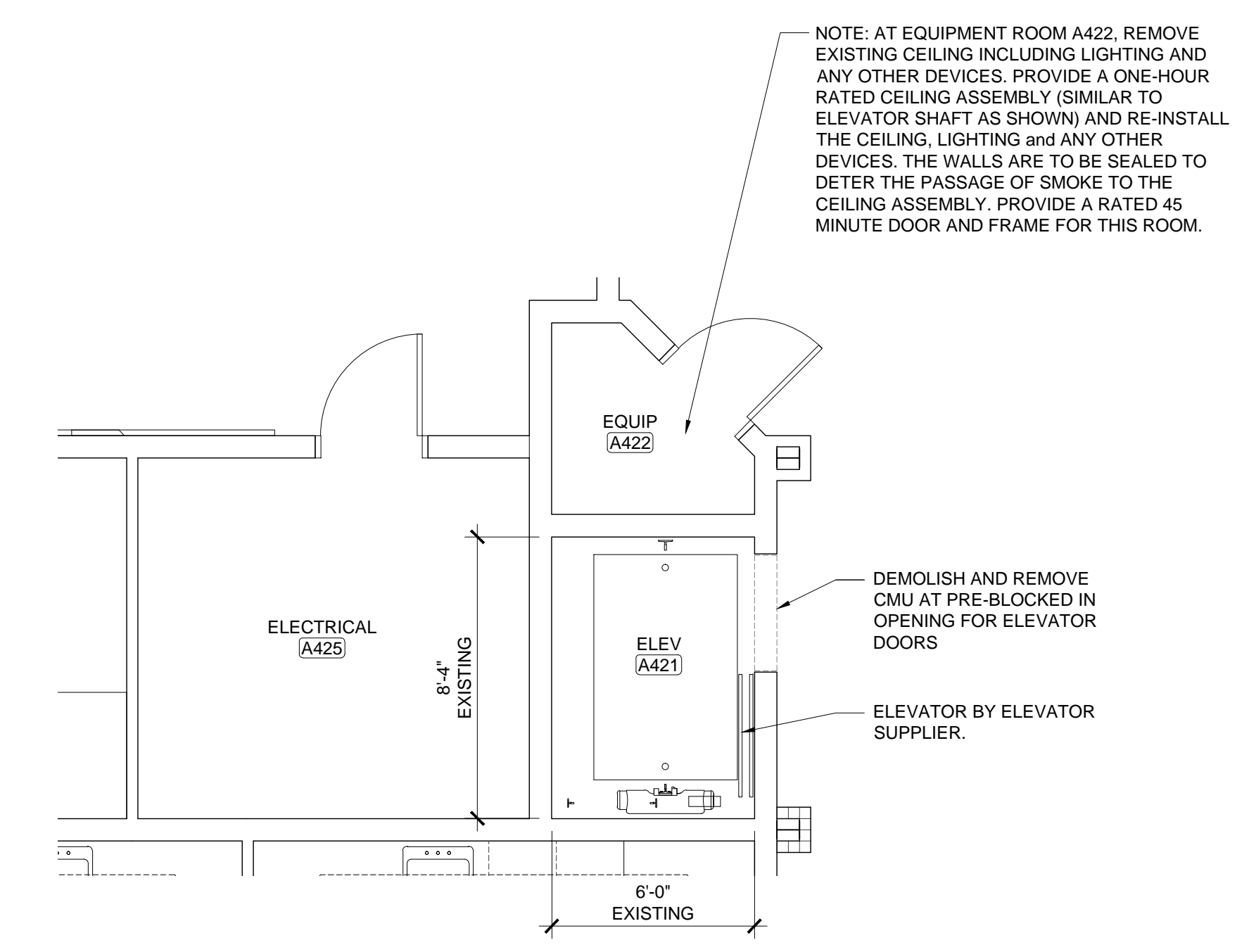
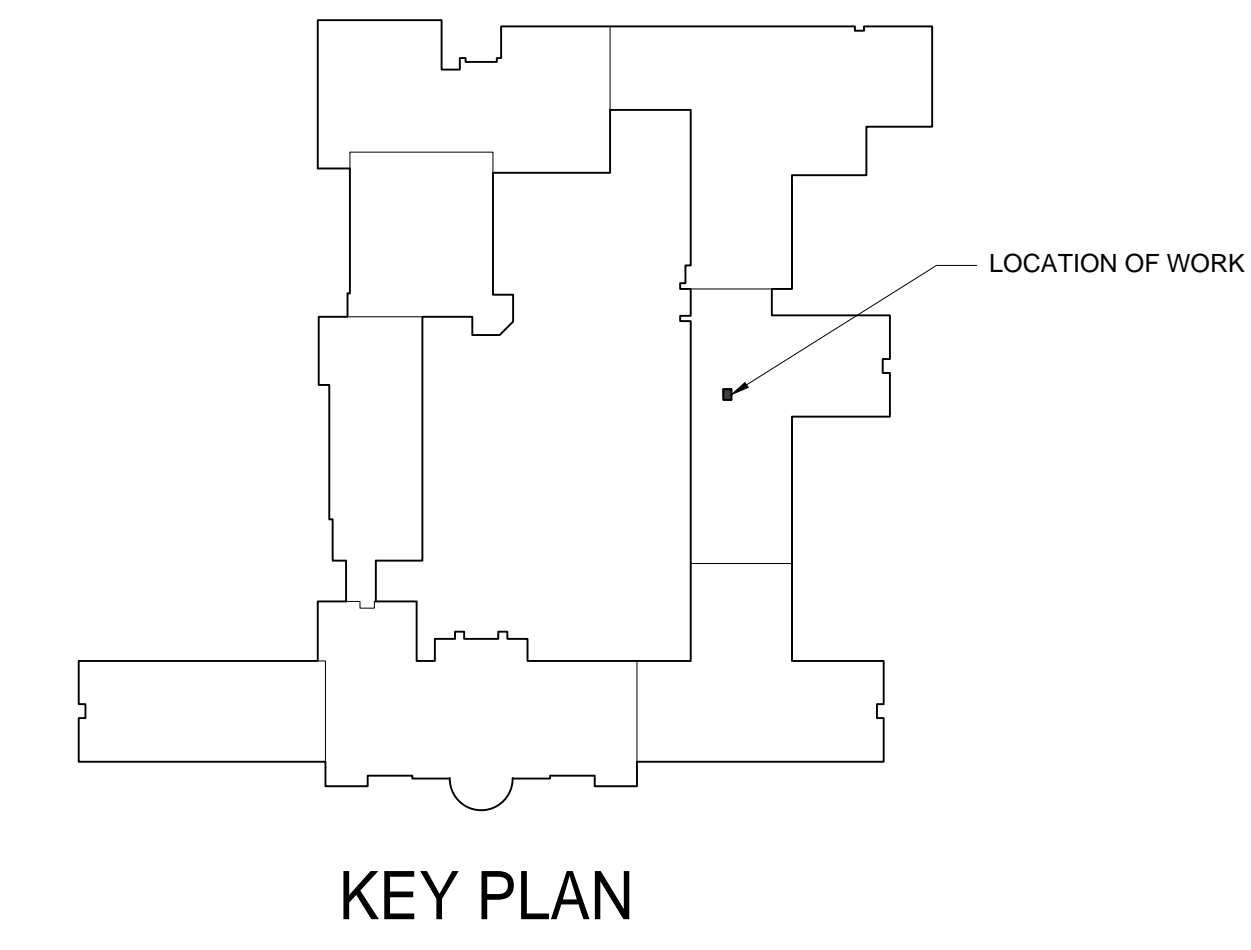
JOB NO. **25-305A**

SHEET NO:

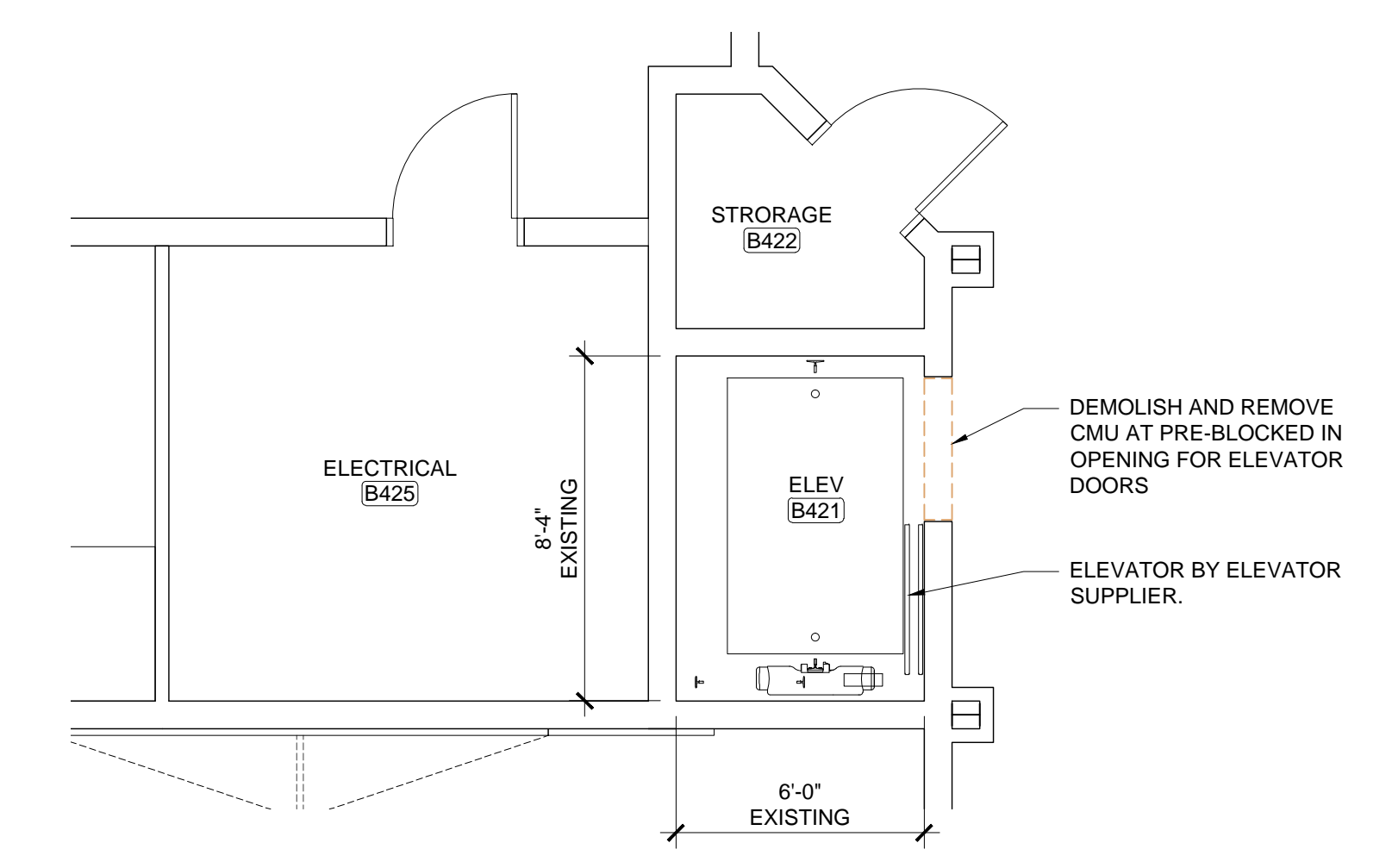
**A1.1**



**A WALL SECTION**  
SCALE: 3/4"=1'-0"



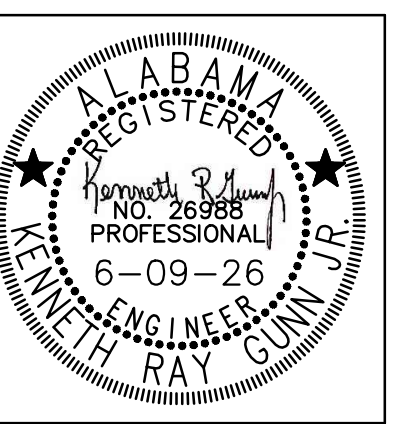
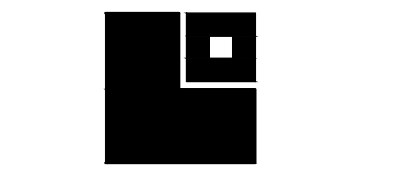
**B FLOOR PLAN FLOOR 1**  
SCALE: 1/4"=1'-0"



**C FLOOR PLAN FLOOR 2**  
SCALE: 1/4"=1'-0"

NOTE: AT EQUIPMENT ROOM A422, REMOVE EXISTING CEILING INCLUDING LIGHTING AND ANY OTHER DEVICES. PROVIDE A ONE-HOUR RATED CEILING ASSEMBLY (SIMILAR TO ELEVATOR SHAFT AS SHOWN) AND REINSTALL THE CEILING, LIGHTING AND ANY OTHER DEVICES. THE WALLS ARE TO BE SEALED TO DETER THE PASSAGE OF SMOKE TO THE CEILING ASSEMBLY. PROVIDE A RATED 45 MINUTE DOOR AND FRAME FOR THIS ROOM.

- Z:\2025\25-305A Elevator Thompson Alabaster City Schools\--Elevator package\Arch CDS\A1.1 Elevator sheet.dwg  
- Tuesday, June 16, 2026 8:31:51 AM

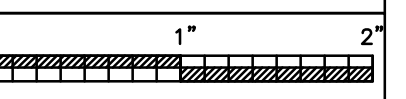


PROJ. MGR.: K.R.G.
DRAWN: I.D.L.
DATE: 05.29.2026
REVISIONS
1 6/9/26

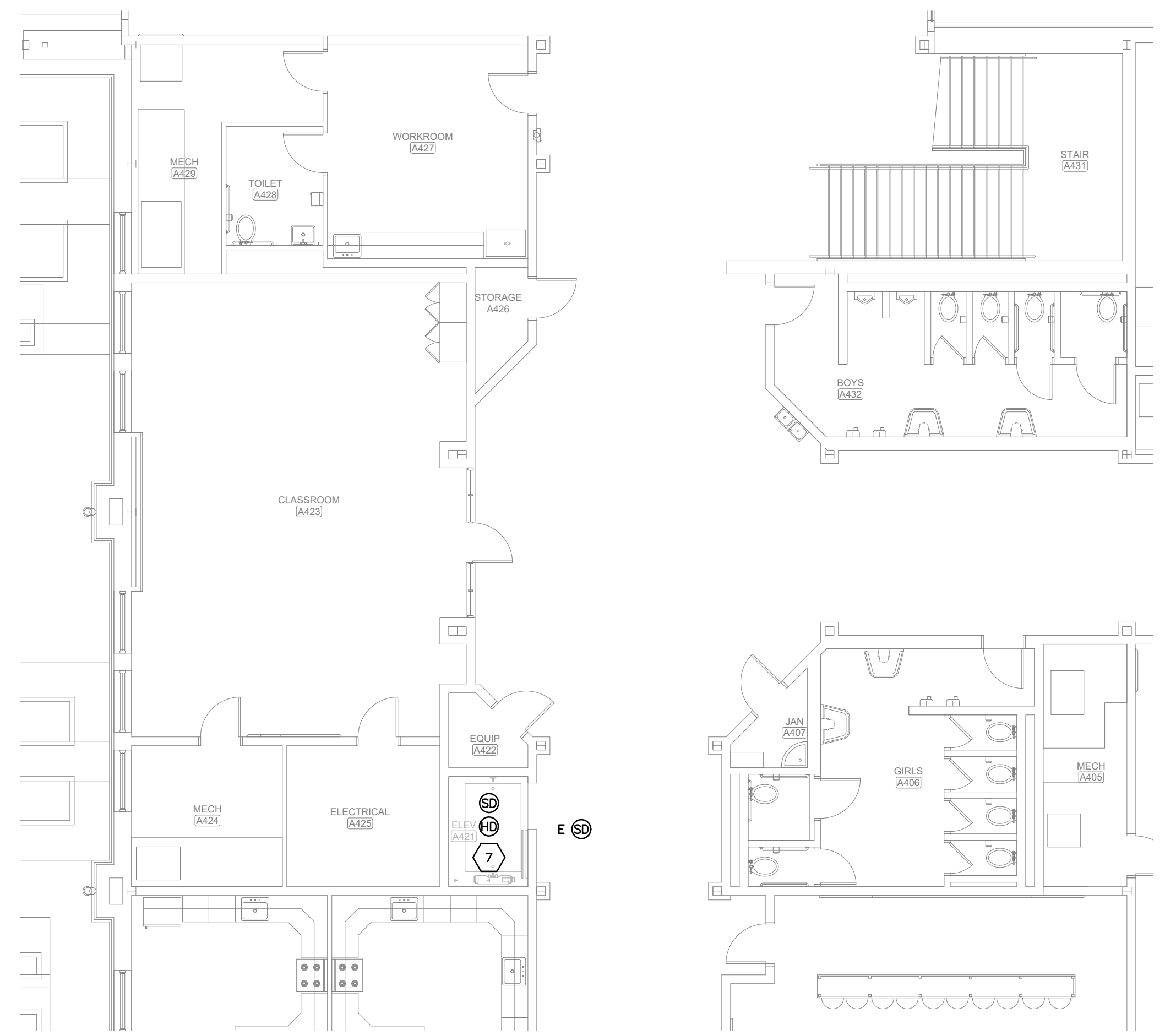
JOB NO. 25-305A

SHEET NO:

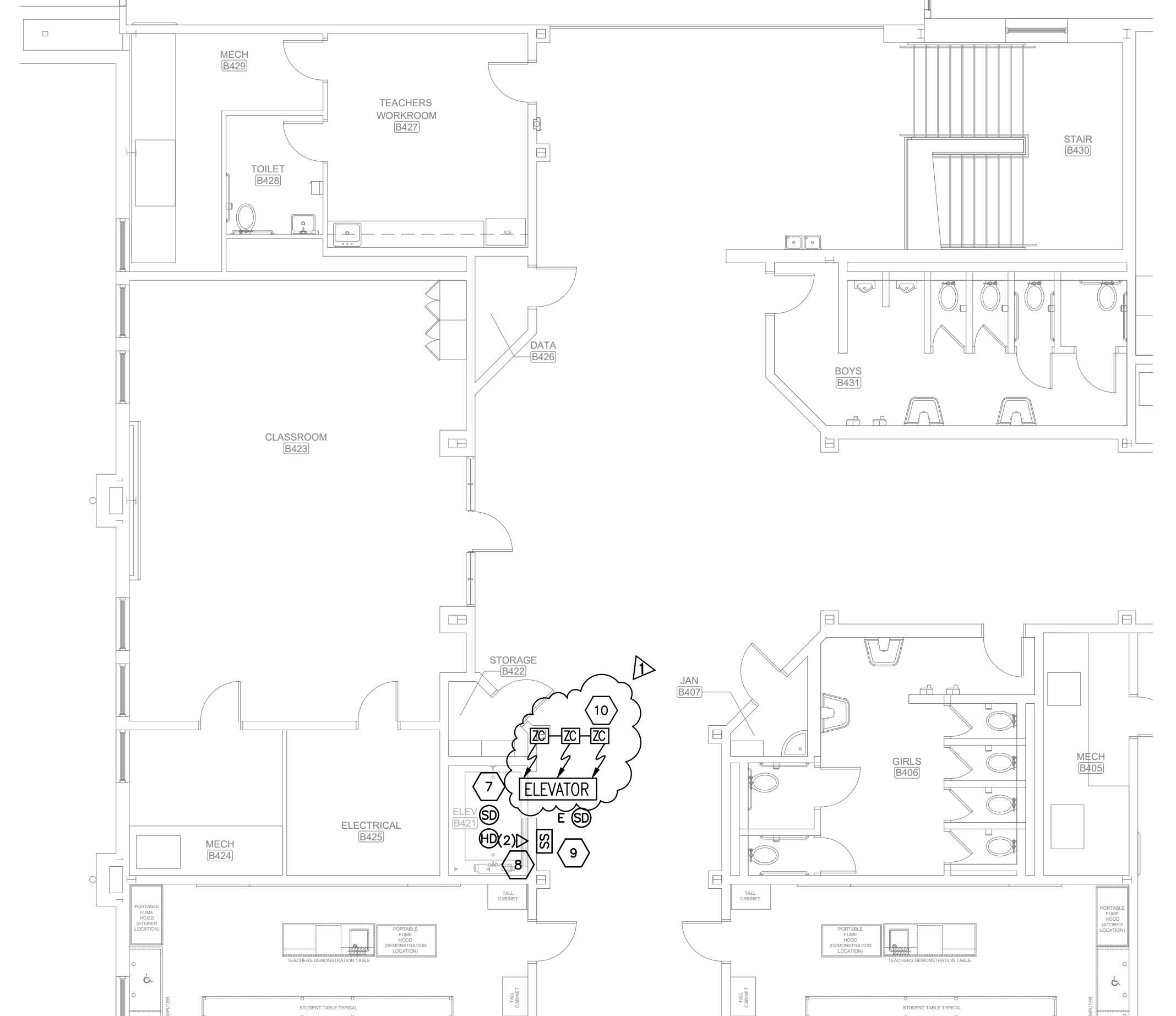
**E1.1**



**Gunn & Associates, P.C.**  
Consulting Engineers  
3102 Highway 14 Millbrook, AL 36054 1200 Providence Park, Suite 200 Birmingham, AL 35242  
Tel: 334.285.1273 GA#26-109



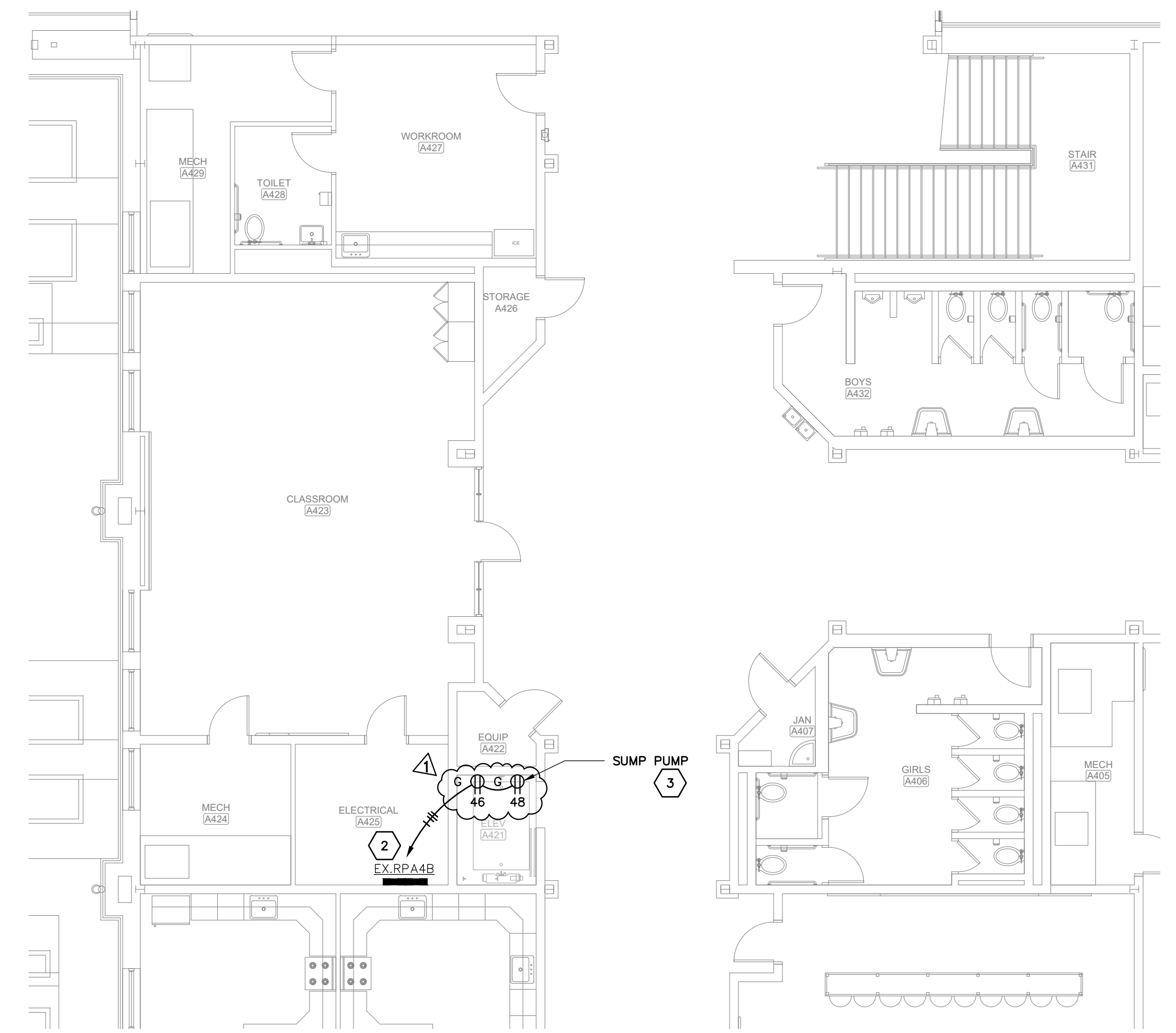
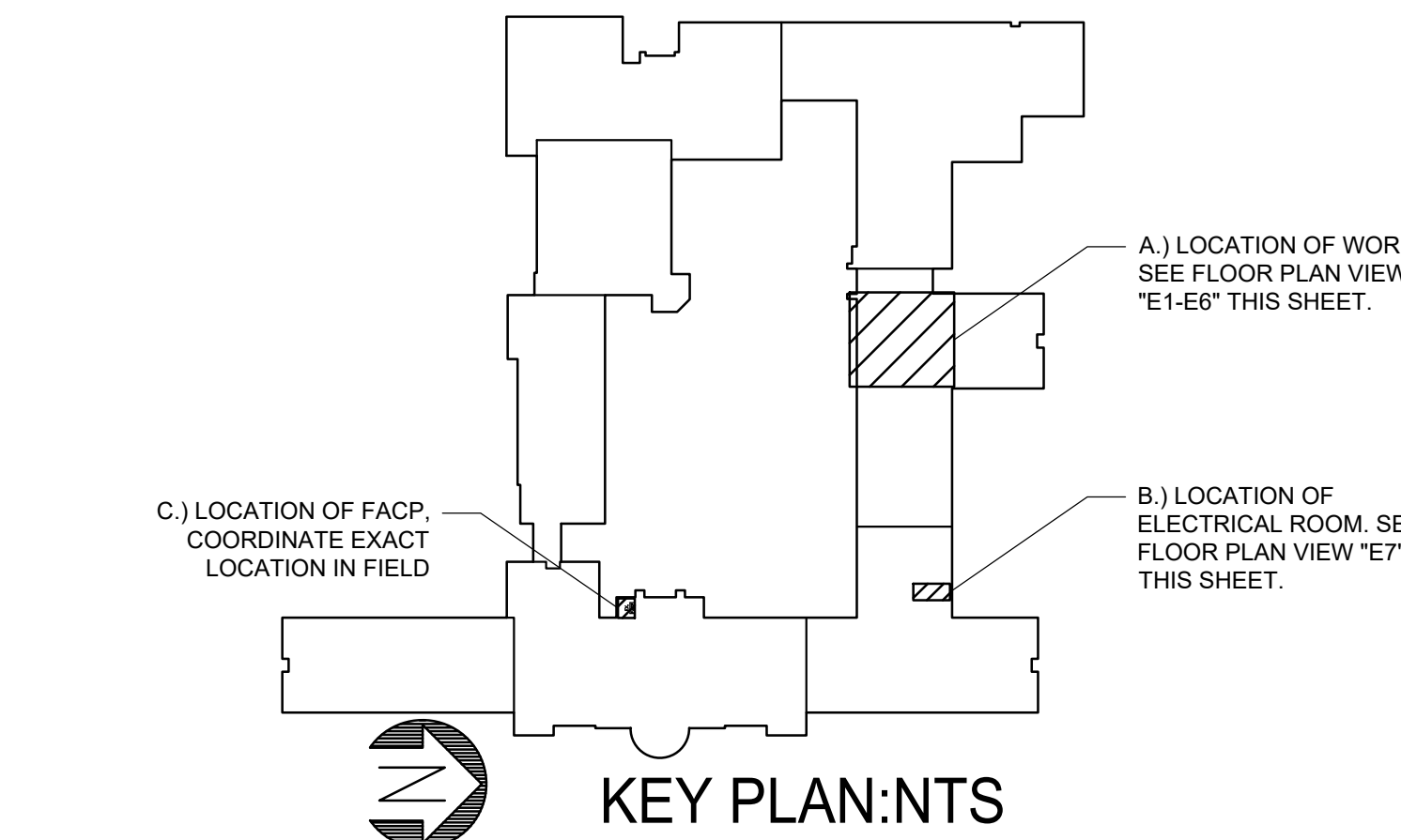
**E5 FIRST FLOOR PLAN PART "A" - AUXILIARY**  
SCALE: 1/8"=1'-0"



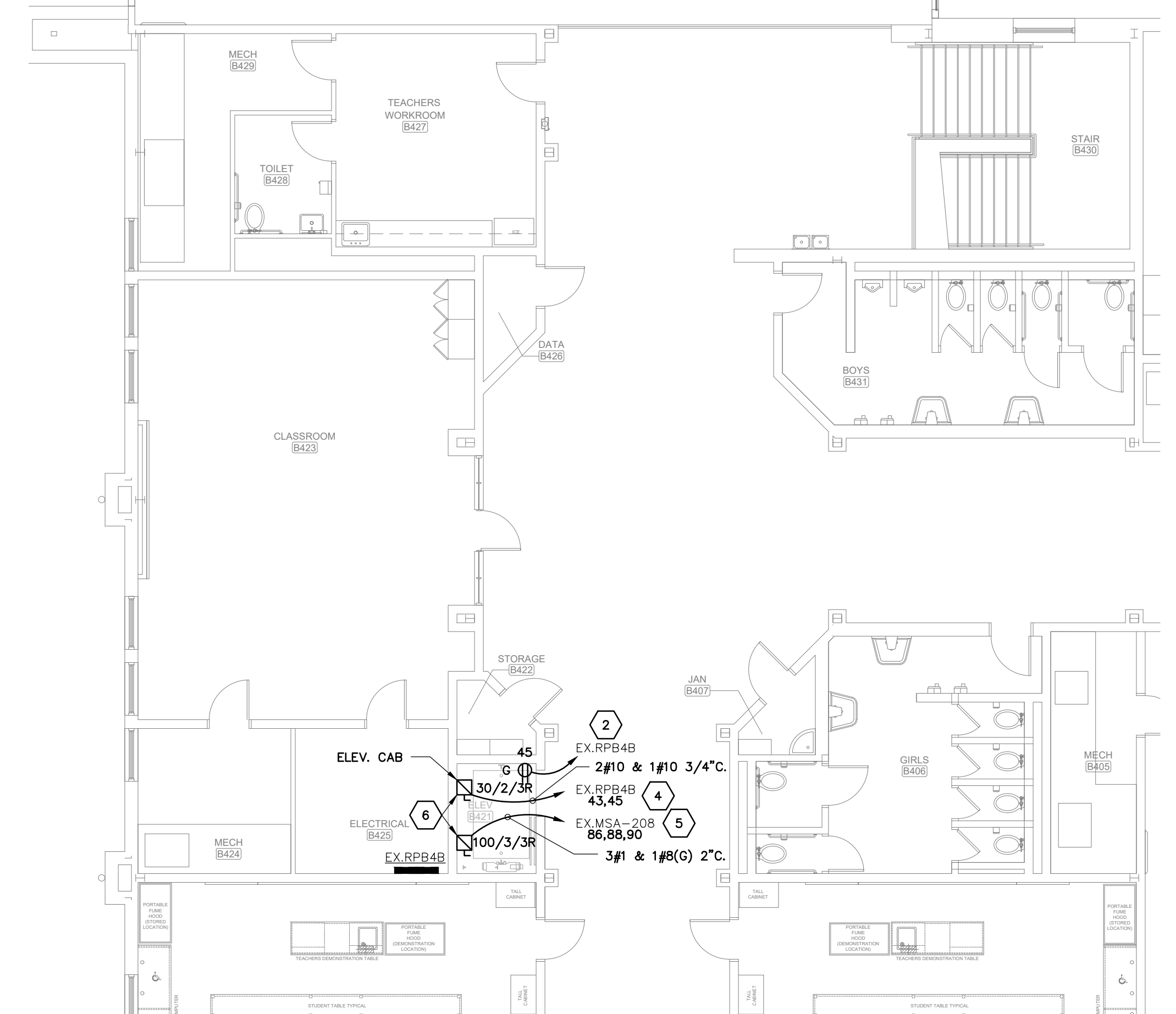
**E6 SECOND FLOOR PLAN PART "A" - AUXILIARY**  
SCALE: 1/8"=1'-0"

**AUXILIARY GENERAL NOTES:**

- ALL CONDUIT SHALL STUB ABOVE ACCESSIBLE CEILING. PROVIDE PROTECTIVE PLASTIC COLLAR AT STUB AND PULLSTRING.



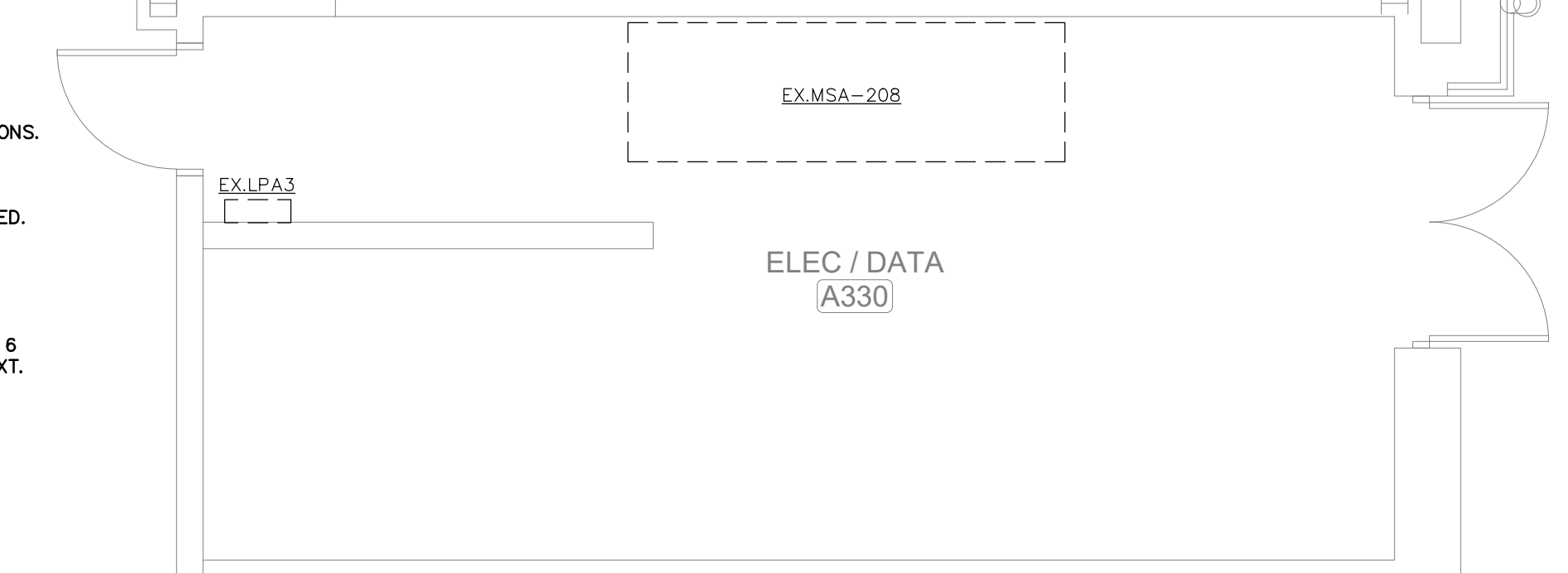
**E3 FIRST FLOOR PLAN PART "A" - POWER**  
SCALE: 1/8"=1'-0"



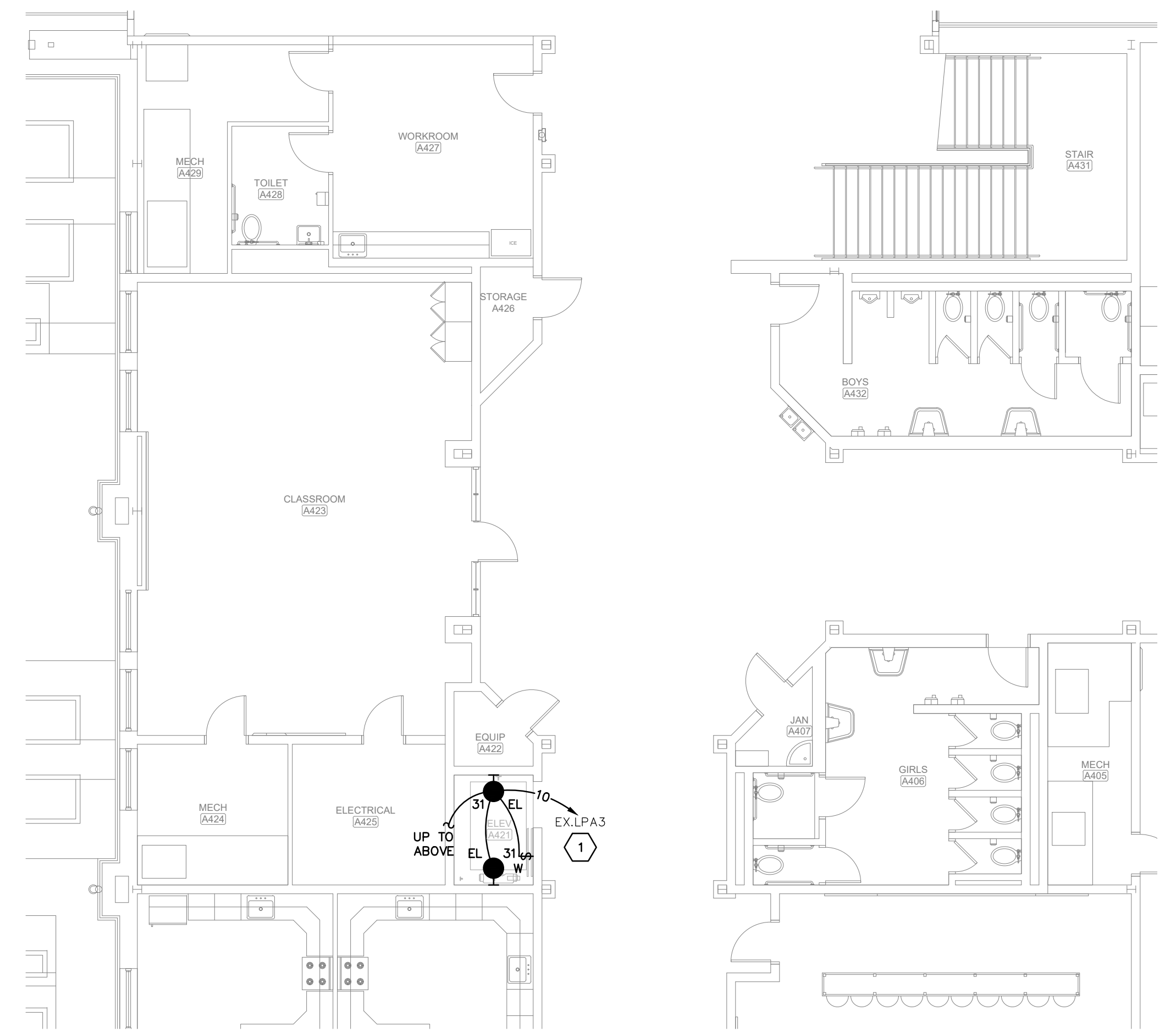
**E4 SECOND FLOOR PLAN PART "A" - POWER**  
SCALE: 1/8"=1'-0"

**POWER GENERAL NOTES:**

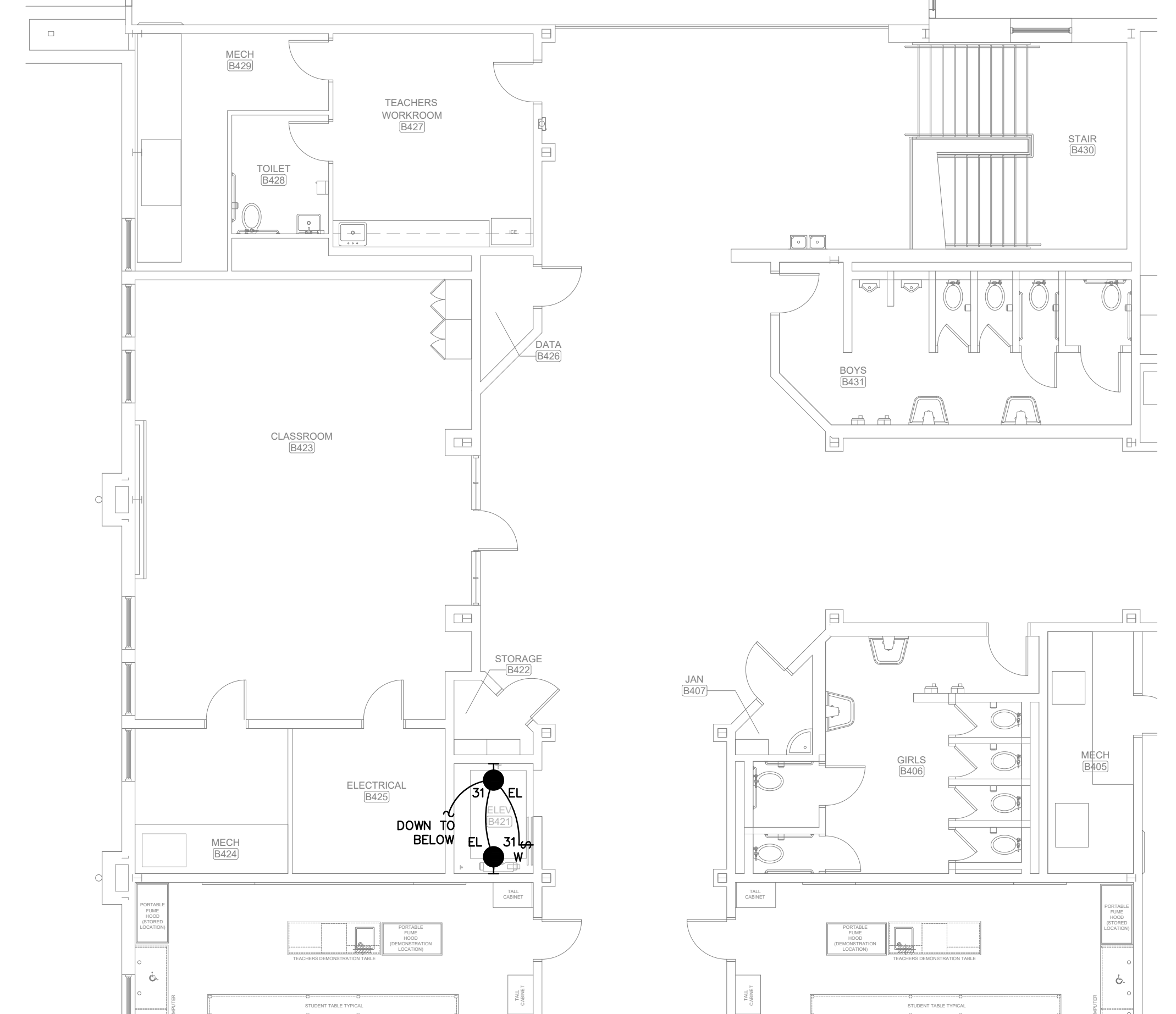
- PROVIDE DEDICATED NEUTRALS FOR EACH MULTIWIRED HOMERUN PER NEC.



**E7 FIRST FLOOR PLAN PART "B" - ENLARGED ELECTRICAL ROOM**  
SCALE: 1/4"=1'-0"



**E1 FIRST FLOOR PLAN PART "A" - LIGHTING**  
SCALE: 1/8"=1'-0"



**E2 SECOND FLOOR PLAN PART "A" - LIGHTING**  
SCALE: 1/8"=1'-0"

**LIGHTING GENERAL NOTES:**

- PROVIDE DEDICATED NEUTRALS FOR EACH MULTIWIRED HOMERUN PER NEC.

**SHEET NOTES:**

- CIRCUIT NUMBERS ARE FOR REFERENCE ONLY. VERIFY IN FIELD. CONNECT TO NEW 20/1 BREAKER IN EXISTING PANELBOARD NOTED. NEW BREAKER SHALL MATCH EXISTING (MANUFACTURER, VOLTAGE, RATINGS, ETC.). BREAKER SHALL BE 42K AIC. PROVIDE NEW AND COMPLETE TYPED WRITTEN DIRECTORY.
- CIRCUIT NUMBERS ARE FOR REFERENCE ONLY. VERIFY IN FIELD. CONNECT TO NEW 20/1 BREAKER IN EXISTING PANELBOARD NOTED. NEW BREAKER SHALL MATCH EXISTING (MANUFACTURER, VOLTAGE, RATINGS, ETC.). BREAKER SHALL BE 22K AIC. PROVIDE NEW AND COMPLETE TYPED WRITTEN DIRECTORY.
- PROVIDE POWER CONNECTION FOR ELEVATOR SUMP PUMP. PROVIDE CONDUIT AND CONNECTIONS TO ANY CONTROL PANEL REQUIRED BY PUMP PROVIDER.
- CIRCUIT NUMBERS ARE FOR REFERENCE ONLY. VERIFY IN FIELD. CONNECT TO NEW 30/2 BREAKER IN EXISTING PANELBOARD NOTED. NEW BREAKER SHALL MATCH EXISTING (MANUFACTURER, VOLTAGE, RATINGS, ETC.). BREAKER SHALL BE 22K AIC. PROVIDE NEW AND COMPLETE TYPED WRITTEN DIRECTORY.
- CIRCUIT NUMBERS ARE FOR REFERENCE ONLY. VERIFY IN FIELD. CONNECT TO NEW 100/3 SHUNT TRIP BREAKER IN EXISTING PANELBOARD NOTED. NEW BREAKER SHALL MATCH EXISTING (MANUFACTURER, VOLTAGE, RATINGS, ETC.). BREAKER SHALL BE 22K AIC. PROVIDE NEW AND COMPLETE TYPED WRITTEN DIRECTORY.
- COORDINATE WITH ELEVATOR PROVIDER AND LOCATE DISCONNECT AT LOCATION TO MEET NEC CLEARANCES. CONTRACTOR SHALL COORDINATE REQUIRED OVERCURRENT PROTECTION WITH ELEVATOR CONTRACTOR PRIOR TO RELEASING ANY POWER EQUIPMENT AND ADJUST OVERCURRENT PROTECTION SIZE AS REQUIRED.
- MOUNT (1)SMOKE AND (1)HEAT DETECTOR WITHIN 1'-0" OF ALL SPRINKLER HEADS IN SHAFT.
- COMMUNICATIONS CABLEING FOR ELEVATOR. TERMINATE ON COPPER CABLE PUNCH DOWN.
- SEE TWO-WAY COMMUNICATION DETAIL SHEET E2.1
- COORDINATE CONTRACTORS AT ELEVATOR DISCONNECT OR BREAKER FEEDING ELEVATOR WILL ELEVATOR VENDOR PRIOR TO ROUGH-IN.

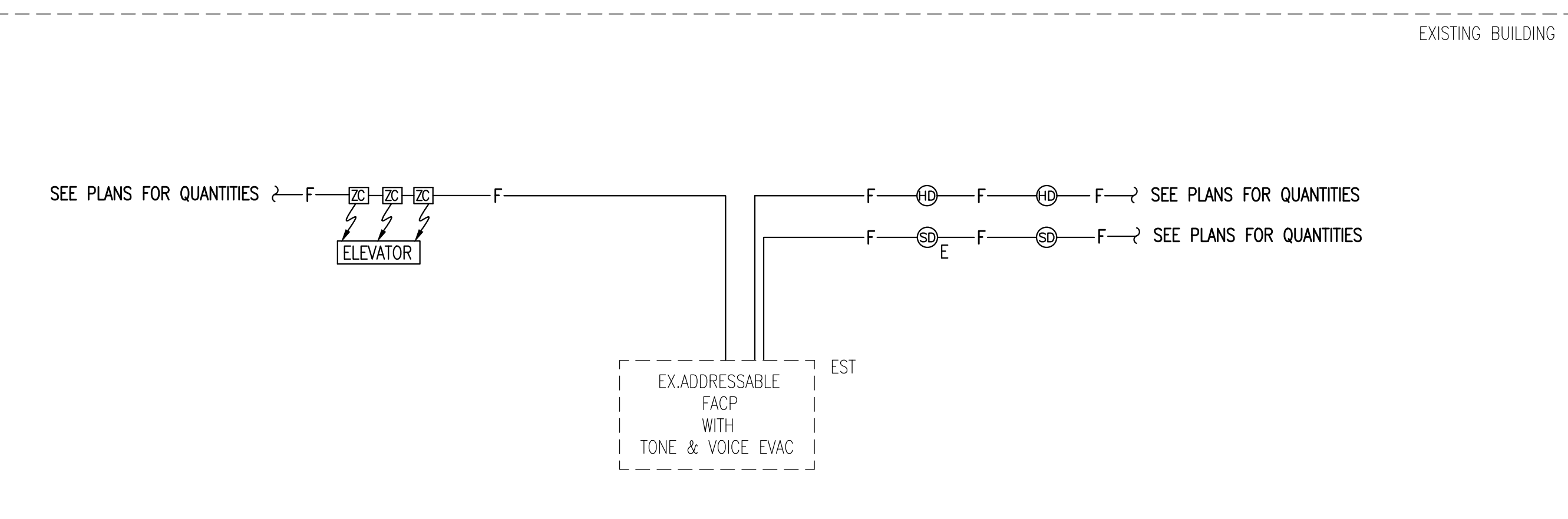
**ELECTRICAL LEGEND**

- 21 ● A WALL MOUNTED FIXTURE, MARK 'A' CIRCUIT NUMBER 2, TYPICAL, 'EMERGENCY POWER'.
- ⊕ DUPLEX RECEPTACLE - 20AMP., 125 VOLT, 2 POLE, 3 WIRE GROUNDED TYPE, NEMA 5-20R. MOUNT 18" A.F.F. UNLESS OTHERWISE NOTED.
- ⊕ DUPLEX RECEPTACLE - 20AMP., 125 VOLT, 2 POLE, 3 WIRE GROUNDED TYPE, NEMA 5-20R. MOUNT 18" A.F.F. UNLESS OTHERWISE NOTED.
- ⊕ DUPLEX RECEPTACLE - 20AMP., 125 VOLT, 2 POLE, 3 WIRE GROUNDED TYPE, NEMA 5-20R. MOUNT 18" A.F.F. UNLESS OTHERWISE NOTED. PROVIDE WEATHERPROOF WHILE IN USE BOX FOR RECEPTACLE.
- S A.C. TYPE, SINGLE POLE, 20AMP, 120/277 VOLT. PANELBOARD SURFACE MOUNTED.
- ⊕ FUSIBLE DISCONNECT SWITCH, XX/YY/ZZ WHERE X INDICATES AMPERAGE, Y INDICATES # OF POLES, AND Z INDICATES NEMA RATING. FURNISH AND INSTALL FUSES PER MANUFACTURER'S RECOMMENDATIONS.
- FACP FIRE ALARM SYSTEM CONTROL PANEL.
- ⊕ FIRE ALARM SYSTEM AUTOMATIC HEAT DETECTOR, 135 DEGREE/RATE OF RISER TYPE, CEILING MOUNTED.
- ⊕ FIRE ALARM SYSTEM AUTOMATIC SMOKE DETECTOR, CEILING MOUNTED.
- ⊕ FIRE ALARM SYSTEM AUTOMATIC SMOKE DETECTOR, CEILING MOUNTED, ELEVATOR RECALL.
- (X) ▷ WALL OUTLET - 4-1/2" 50 x 3-1/2" DEEP BOX, MOUNT 18" A.F.F., 'X' INDICATES NUMBER OF CAT 6 RJ-45 JACKS AND CAT 6 CABLES IN 1" CONDUIT BACK TO MDF. TERMINATE CABLES, LABEL AND TEXT.
- ⊕ COMMUNICATIONS RACK AND CABINET. SEE AUXILIARY SHEETS FOR ADDITIONAL INFORMATION AND REQUIREMENTS.

**FIRE ALARM SYSTEM NOTES:**

- THE FIRE ALARM SYSTEM SHALL BE A COMPLETE SUPERVISED DETECTION AND ALARM SYSTEM. PROVIDE PRIMARY POWER CIRCUITS AND ALARM NOTIFICATION AND INITIATING CIRCUITS IN ACCORDANCE WITH MANUFACTURER'S RECOMMENDATIONS AND SPECIFICATIONS.
- INSTALLATION SHALL COMPLY WITH THE ADA, NEC, NFPA, AND UL.
- ALL SYSTEM COMPONENTS, ENCLOSURES, FRAMES, SURGE ARRESTORS, ETC., SHALL BE GROUNDED.
- THE FIRE ALARM WIRING SYSTEM SHALL BE FURNISHED AND INSTALLED IN ACCORDANCE WITH THE MANUFACTURER'S REQUIREMENTS FOR CLASS "B" SYSTEM AND AS FOLLOWS:  
 PRIMARY POWER - 120V AC  
 NOTIFICATION APPLIANCE CIRCUITS (NAC) - 24V DC  
 SIGNALING LINE CIRCUIT (SLC) - 24V DC
- ALL EQUIPMENT AND DEVICES SHALL BE INSTALLED IN ACCORDANCE WITH THE MANUFACTURER'S INSTRUCTIONS, APPLICABLE STANDARDS AND ACCESSIBLE FOR VISUAL INSPECTION AND MAINTENANCE. WIRING DIAGRAMS SHALL BE SECURED FROM THE SYSTEM MANUFACTURER AND INSTALLED ACCORDINGLY TO MEET THE SPECIFIED TYPES.
- A "CERTIFICATE OF COMPLETION" IN ACCORDANCE WITH NFPA 72 SHALL BE FURNISHED PRIOR TO FINAL ACCEPTANCE.
- CONTRACTOR IS RESPONSIBLE FOR VERIFYING AND PROVIDING ALL FIRE ALARM DEVICE QUANTITIES FROM AUXILIARY DRAWINGS. DO NOT USE THIS RISER FOR DEVICE COUNTS.
- THE CONTRACTOR OR THEIR FIRE ALARM SYSTEM VENDOR SHALL PROVIDE AUDIBILITY CALCULATIONS INDICATING COMPLIANCE WITH ALL APPLICABLE PROVISIONS OF NFPA 72 AND THE IBC. THE CONTRACT DRAWINGS INDICATE A MINIMUM DESIGN REQUIRED TO COMPLY WITH APPLICABLE CODES. HOWEVER, SINCE DEVICES VARY FROM MANUFACTURER TO MANUFACTURER THE CONTRACTOR SHALL BE RESPONSIBLE FOR FURNISHING ANY/ALL ADDITIONAL DEVICES AS REQUIRED TO PROVIDE AUDIBILITY AND VISIBILITY LEVELS THAT COMPLY WITH APPLICABLE SECTIONS OF NFPA 72 AND IBC.
- PROVIDE ADDITIONAL 100% SPARE CAPACITY IN FIRE ALARM CONTROL PANEL FOR FUTURE USE.

- PROVIDE EMERGENCY BATTERIES CAPABLE OF RUNNING THE COMPLETE FIRE ALARM SYSTEM IN ALARM MODE, PER NFPA GUIDELINES AT A MINIMUM. BATTERIES SHALL BE SIZED TO HANDLE THE FUTURE CAPACITY.
- THE FIRE ALARM SYSTEM SHALL BE MONITORED BY AN APPROVED SUPERVISING STATION IN ACCORDANCE WITH NFPA 72. PROVIDE IP DIALER FOR MONITORING OF THE FIRE ALARM SYSTEM.
- ALL WIRING TO BE IN CONDUIT SIZED IN ACCORDANCE WITH NEC WITH A MINIMUM SIZE OF 3/4". PROVIDE ALL FIRE ALARM CONDUIT WITH 3" WIDE RED STRIPE EVERY 10' FOR LENGTH OF RUN.
- PROVIDE ALL FIRE ALARM JUNCTION BOXES WITH RED COVER, STENCIL THE LETTERS "FA" IN 2" HIGH LETTERS ON EACH BOX COVER.
- FIRE ALARM SYSTEM PROVIDER IS RESPONSIBLE FOR PROVIDING SIGNAL LINE BOOSTERS AS REQUIRED FOR SYSTEM TO FUNCTION PROPERLY.
- IN ADDITION TO THE DEVICES INDICATED ON THE PLANS THE CONTRACTOR SHALL PROVIDE A SMOKE DETECTOR LOCATED WITHIN 5 FEET OF EACH FIRE ALARM NOTIFICATION APPLIANCE PANEL.
- CONTRACTOR SHALL PROVIDE ALL ADDITIONAL 120 VOLT CIRCUITS NEEDED TO MAKE THE FIRE ALARM SYSTEM A COMPLETE FUNCTIONAL SYSTEM.
- PROVIDE VOICE EVACUATION PER IBC SECTION 907 AND ALL SECTIONS OF THE INTERNATIONAL FIRE CODE.
- "CLG" DENOTES A CEILING MOUNTED DEVICE AND "WP" DENOTES WEATHERPROOF DEVICE..
- SEE STANDARD MOUNTING HEIGHT INSTRUCTIONS ON DETAILS (2) THIS SHEET.
- CONTRACTOR OR THEIR FIRE ALARM SYSTEM VENDOR SHALL PROVIDE SMOKE DETECTOR REPORTS AT THE FINAL TESTING OF THE FIRE ALARM SYSTEM TO SHOW THAT ALL SMOKE DETECTORS ARE LESS THAN 10% DIRTY. ANY SMOKE DETECTOR GREATER THAN 10% DIRTY SHALL BE CLEANED OR REPLACED UNTIL VALUE IS LESS THAN 10%.
- CONTRACTOR SHALL COORDINATE WITH FIRE PROTECTION DRAWINGS AND PROVIDE MONITORING FOR ALL TAMPER, FLOW, AND SUPERVISORY SWITCHES AS REQUIRED PER NFPA. ALSO, COORDINATE AND PROVIDE HEAT DETECTORS WITHIN 1' OF EVERY SPRINKLER HEAD IN THE ELEVATOR SHAFT.



**1**  
E2.1  
**FIRE ALARM - RISER DIAGRAM**  
NO SCALE

**GENERAL DEMOLITION NOTES:**

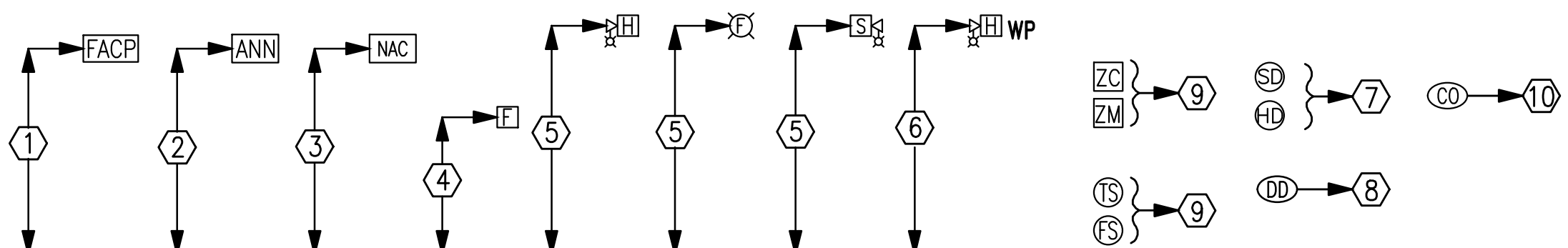
- CONTRACTOR IS RESPONSIBLE FOR VERIFYING ALL EXISTING CONDITIONS PRIOR TO BID AND BIDDING ACCORDINGLY.
- ALL DEMOLITION WORK SHALL BE PERFORMED WITH CARE NOT TO DISTURB THE OTHER EXISTING UTILITIES. IF EXISTING UTILITIES ARE DAMAGED BY THE CONTRACTOR, THE EXISTING UTILITIES ARE TO BE FIXED TO ITS ORIGINAL CONDITION WITHOUT DELAY, BY AND AT THE EXPENSE OF THE CONTRACTOR.
- LEGEND SYMBOLS ARE TYPICAL AND LOCATIONS ARE APPROXIMATE AND ARE NOT INTENDED TO LIMIT THE AMOUNT OF DEMOLITION WORK. COORDINATE WITH EXISTING CONDITIONS AND THESE NOTES AND REMOVE ALL APPLICABLE SYSTEMS AND COMPONENTS CONFLICTING WITH FINISHED DESIGN INTENT.
- EXISTING BRANCH WIRING AND DEVICES SHOWN IS DIAGRAMMATICAL ONLY BASED ON EXISTING DRAWINGS AND SURVEYS. COORDINATE WITH ACTUAL EXISTING CONDITIONS FOR EXACT LOCATIONS.
- TRENCH, CUT AND REMOVE EXISTING SURFACES AS REQUIRED FOR THE INSTALLATION OF ALL NEW ELECTRICAL PROVISIONS.
- CONCEALED CONDUIT THAT CANNOT BE REMOVED DUE TO INACCESSIBILITY MAY BE ABANDONED. CONDUCTORS SHALL BE REMOVED AND CONDUIT CUT FLUSH WITH SURFACE.
- OUTLET BOXES THAT CANNOT BE REMOVED DUE TO FLUSH MOUNTING IN PARTITIONS SHALL BE FILLED WITH GROUT, PATCHED AND FINISHED FLUSH TO MATCH EXISTING WALL SURFACE.
- EXISTING JUNCTION BOXES MAY BE USED AS NOTED IF OF THE PROPER SIZE. MODIFICATIONS SHALL BE MADE WHEN REQUIRED SUCH AS PROVIDING EXTENSION RINGS, LOCKNUTS, BUSHINGS, ETC.
- EXISTING PANELBOARDS SHALL BE UTILIZED TO FACILITATE THE WORK AS SHOWN ON THE DRAWINGS. NEW CIRCUIT BREAKERS SHALL BE OF THE SAME MANUFACTURER (WHENEVER POSSIBLE), FRAME SIZE, AIC RATING AND TYPE AS EXISTING. CONTRACTOR SHALL PROVIDE ALL ADDITIONAL MATERIALS FOR PANELBOARDS TO PROPERLY MEET THE INTENT OF THE DRAWINGS.
- WHEN EXISTING DEVICES, SWITCHES, EQUIPMENT, ETC. ARE NOTED TO BE REMOVED AND THE CIRCUIT(S) SERVING SUCH ITEMS SERVES OTHER ITEMS OR DEVICES WHICH ARE TO BE MAINTAINED, THE CONTRACTOR SHALL REROUTE, EXTEND, MODIFY, ETC. EXISTING CIRCUITS AS REQUIRED TO MAINTAIN COMPLETE AND OPERATING SYSTEMS.
- IN ANY AREA TO BE REWORKED, THE ELECTRICAL CONTRACTOR SHALL REMOVE ALL EXISTING ELECTRICAL EQUIPMENT (LIGHT FIXTURES, DEVICES, ETC) AND ALL BRANCH CIRCUITS AND FEEDERS NOT REQUIRED FOR CONTINUATION OF EXISTING CIRCUITS TO REMAIN AND REWORK THE AREA AS SHOWN. ANY CIRCUITS BROKEN BY DEMOLITION FOR THE NEW BUILDING ALTERATIONS SHALL BE REPLACED AS REQUIRED. PROVIDE BLANK COVERS FOR ALL UNUSED OUTLETS NEEDED FOR CONTINUITY OF EXISTING CIRCUITS.

**GENERAL ELECTRICAL NOTES:**

- THESE DRAWINGS ARE A PART OF A COMPLETE SET OF ARCHITECTURAL/ENGINEERING CONTRACT DOCUMENTS. ELECTRICAL CONTRACTOR SHOULD REFER TO THE ARCHITECTURAL PLANS FOR WALL DEFINITIONS, ELEVATIONS, CASEWORK, REFLECTED CEILING PLAN, ETC..
- INSTALLATION SHALL COMPLY WITH THE NATIONAL ELECTRICAL CODE, STATE AND LOCAL CODES AND MANUFACTURER'S RECOMMENDATIONS. CONTRACTOR SHALL OBTAIN AND PAY FOR ALL NECESSARY PERMITS.
- MAINTAIN ALL CLEARANCES FOR ELECTRICAL EQUIPMENT PER THE NEC.
- ALL SYMBOLS SHOWN ON THIS LEGEND MAY NOT BE USED.
- ALL BRANCH CIRCUIT CONDUIT SHALL BE GALVANIZED EMT, JOINED AND TERMINATED WITH SET SCREW STEEL FITTING, 3/4" CONDUIT MINIMUM.
- ALL DIMENSIONS INDICATED IN THESE DOCUMENTS ARE FOR REFERENCE AND COORDINATION PURPOSES ONLY. THE CONTRACTOR IS RESPONSIBLE FOR VERIFYING ALL DIMENSIONS IN THE FIELD AND COORDINATING WORK WITH OTHER TRADES TO AVOID CONFLICTS.
- VERIFY ALL DOOR SWINGS WITH ARCHITECTURAL BEFORE ROUGH-IN OF LIGHT SWITCHES TO ENSURE PROPER SWITCH LOCATION.
- THE LOCATION OF OUTLETS, FIXTURES AND EQUIPMENT SHOWN ON THE DRAWINGS ARE APPROXIMATE. OFFSET AS NEEDED OR AS REQUESTED BY THE OWNER. THE OWNER SHALL HAVE THE RIGHT TO RELOCATE ANY OUTLETS OR FIXTURES BEFORE THEY ARE INSTALLED WITHOUT ANY ADDITIONAL COST.
- COORDINATE EXACT LOCATION OF ALL ELECTRICAL FLOOR DEVICES WITH ARCHITECT PRIOR TO INSTALLATION.
- ALL ELECTRICAL RACEWAYS AND CABLING SHALL BE INSTALLED CONCEALED WITHIN THE CONFINES OF THE BUILDING FOUNDATIONS EXCEPT THOSE SPECIFICALLY SERVING LOADS OR EQUIPMENT EXTERIOR OF THE BUILDING. ALL SUCH RACEWAYS SHALL BE A MINIMUM 18" INSIDE FOUNDATIONS. POWER AND COMMUNICATIONS RACEWAYS SHALL BE SEPARATED BY A MINIMUM 18".
- ALL CIRCUITS SHOWN CONCEALED SHALL BE RUN IN FURRED CEILING SPACES AND SHALL BE CONCEALED IN CONCRETE SLAB ONLY WHEN NO FURRED CEILING SPACE IS PROVIDED.
- ALL RACEWAYS SHALL BE SUPPORTED PER NEC AND AT LEAST EVERY 10' AND WITHIN 3' OF EVERY JUNCTION BOX. RACEWAYS SUPPORTED ON BOTTOM OF SECONDARY CEILING SHALL BE SUPPORTED FROM THE STRUCTURE NOT FROM THE GYPSBOARD CEILING.
- ALL EMPTY WALL MOUNTED JUNCTION BOXES SHALL BE PROVIDED WITH A WALL BLANK AND ALL EMPTY RACEWAYS SHALL BE PROVIDED WITH PULL WIRES.
- ALL CONDUITS CROSSING EXPANSION JOINTS SHALL HAVE EXPANSION TYPE FITTINGS.
- ALL OUTLET BOXES MOUNTED BACK-TO-BACK IN WALLS SHALL HAVE FIREPROOF SOUND INSULATING MATERIAL INSTALLED BETWEEN THE BOXES TO PREVENT SOUND TRANSMISSION FROM ONE ROOM TO THE OTHER.
- PROVIDE ALL CONDUIT STUBS WITH A PROTECTIVE COLLAR.
- ENSURE THAT ALL PENETRATIONS OF FIRE WALLS AND DECKS ARE PROPERLY SEALED PER INTERNATIONAL BUILDING CODE 712 AND WITH AN UL APPROVED DEVICE OR FIRE CAULK. REFER TO ARCHITECTURAL PLANS FOR THE LOCATIONS OF RATED FIRE WALLS AND UL ASSEMBLY LOCATIONS AND TYPES AND BID ACCORDINGLY.
- ALL FLEXIBLE CONDUITS ON THE EXTERIOR, IN WET LOCATIONS OR ANY MECHANICAL ROOM SHALL BE LIQUID TIGHT WITH SUITABLE FITTINGS.
- THE CONTRACTOR SHALL BE RESPONSIBLE FOR SEALING AROUND DEVICES, PENETRATIONS, OUTLETS, AND CONDUITS THAT PENETRATE THE WALLS ABOVE THE CEILING TO MAINTAIN SOUNDPROOFING. CONTRACTOR SHALL VERIFY THAT THE OPENING SIZES ARE LESS THAN 1/2" ON ALL SIDES OF THE PENETRATIONS. ALL OPENINGS IN EXCESS OF 1/2" SHALL BE CALKED/SEALED WITH SHEET ROCK MUD. THE DRYWALL CONTRACTOR SHALL BE RESPONSIBLE FOR SEALING PENETRATIONS IN PLACE WHEN THE SHEETROCK IS INSTALLED. PENETRATIONS MADE AFTER THE DRYWALL CONTRACTOR HAS COMPLETED IN AN AREA SHALL BE SEALED BY THE CONTRACTOR MAKING THE PENETRATION.
- PLANNED INTERRUPTIONS OF UTILITY SERVICE TO ANY EXISTING FACILITY OR AREAS WITHIN ANY FACILITY AFFECTED BY THIS CONTRACTOR SHALL BE CAREFULLY PLANNED AND COORDINATED IN ADVANCE OF THE REQUESTED INTERRUPTION. THE CONTRACTOR SHALL NOT INTERRUPT SERVICES UNTIL SPECIFIED APPROVAL HAS BEEN GRANTED. THE REQUEST SHALL INDICATE SERVICES AND AREAS TO BE AFFECTED, DATE AND TIME OF INTERRUPTION AND DURATION OF OUTAGE. REQUEST FOR INTERRUPTION OF SERVICE WILL NOT BE APPROVED UNTIL ALL EQUIPMENT AND MATERIAL REQUIRED FOR THE COMPLETION OF THAT PARTICULAR PHASE OF WORK ARE ON THE JOB SITE. CONTRACTOR IS RESPONSIBLE FOR ALL OVERTIME, HOLIDAY AND WEEKEND PAY TO THEIR EMPLOYEES TO DO THIS WORK DURING SCHEDULED NON-NORMAL WORK HOURS.
- ALL EMERGENCY LIGHTS AND EXIT SIGNS SHALL HAVE AN EMERGENCY BATTERY DRIVER CONNECTED AHEAD OF LOCAL SITING, UNLESS EMERGENCY LIGHTING IS ON EMERGENCY CIRCUIT FROM A GENERATOR.
- ALL JUNCTION BOX COVERS ABOVE THE CEILING SHALL BE CLEARLY MARKED WITH WHICH CIRCUITS OR ELECTRICAL SYSTEM THEY CONTAIN.
- ALL BRANCH CIRCUITS SHALL INCLUDE A GREEN COVERED GROUND WIRE SIZED PER NEC OR AS SHOWN. CONNECT TO EACH DEVICE AND OUTLET BOX ON THE CIRCUIT AND TO THE PANELBOARD GROUND BUS. MULTIPLE WIRE BRANCH CIRCUITS WITH COMMON NEUTRAL REQUIRE ONLY ONE GROUND WIRE. NUMBER OF WIRES SHOWN ON DRAWINGS DOES NOT INCLUDE GROUND WIRE.
- INFORMATION SHOWN ON THESE PLANS IS TAKEN FROM EXISTING DRAWINGS AND SITE SURVEY. PRIOR TO BID, THE ELECTRICAL CONTRACTOR SHALL VISIT SITE TO SURVEY EXISTING CONDITIONS AFFECTING WORK. NECESSARY MATERIALS AND LABOR TO ACCOMPLISH THE ELECTRICAL WORK, INCLUDING RELOCATION OF EXISTING EQUIPMENT TO ALLOW FOR NEW CONSTRUCTION, SHALL BE BROUGHT TO THE ATTENTION OF THE ARCHITECT/ENGINEER AND RESOLVED PRIOR TO BID. WORK SHALL BE COORDINATED WITH ALL OTHER TRADES.
- MULTI-POLE BREAKERS SHALL BE USED TO SERVE MULTIWIRE BRANCH CIRCUITS. MULTIPLE SINGLE POLE BREAKERS MAY BE USED IN CONJUNCTION WITH UL LISTED HANDLE TIES THAT WILL INITIATE A COMMON DISCONNECT OF ALL UNGROUNDED CONDUCTORS. CONTRACTOR SHALL COORDINATE WITH MANUFACTURER.

**FIRE ALARM MOUNTING HEIGHTS/INSTRUCTIONS NOTES:**

- MOUNT FIRE ALARM ENCLOSURE WITH THE TOP OF THE CABINET 72" ABOVE THE FINISHED FLOOR OR CENTER THE CABINET AT 63", WHICHEVER IS LOWER.
- MOUNT ANNUNCIATOR WITH THE TOP OF THE PANEL 72" ABOVE THE FINISHED FLOOR OR CENTER OF THE PANEL AT 63", WHICHEVER IS LOWER. FLUSH MOUNT ANNUNCIATOR UNLESS OTHERWISE NOTED.
- REMOTE POWER SUPPLIES AND AUXILIARY FIRE ALARM PANELS. LOCATE THE PANEL OR CABINET WITH THE TOP OF THE PANEL 72" ABOVE THE FINISHED FLOOR OR CENTER THE PANEL AT 63", WHICHEVER IS LOWER. DO NOT LOCATE THESE PANELS ABOVE CEILINGS OR WHERE INACCESSIBLE BY A PERSON STANDING ON THE FINISHED FLOOR OF THE SPACE.
- MOUNT STATIONS SO THAT THEIR OPERATING HANDLES ARE BETWEEN 42" AND 48" ABOVE THE FINISHED FLOOR. DO NOT USE BRICK OR BLOCK COURSES AS YOUR ONLY GUIDE. CUT BRICK OR BLOCK TO ACHIEVE PROPER HANDLE HEIGHT.
- ALL WALL MOUNTED AUDIO/VISUAL DEVICES SHALL BE MOUNTED SO THE ENTIRE LENS IS BETWEEN 80" AND 96" ABOVE THE FINISHED FLOOR. WHERE LOW CEILING HEIGHTS DO NOT PERMIT MOUNTING AT A MINIMUM OF 80" AFF, VISIBLE APPLIANCES SHALL BE MOUNTED WITHIN 6" OF THE CEILING. DO NOT USE BRICK OR BLOCK COURSES AS YOUR ONLY GUIDE. CUT BRICK OR BLOCK TO ACHIEVE PROPER LENS HEIGHT.
- WEATHER PROOF APPLIANCES INSTALLED OUTDOORS SHALL BE UL LISTED FOR OUTDOOR USE. MOUNT SO THE ENTIRE LENS IS BETWEEN 80" AND 96" ABOVE FINISHED FLOOR. FOR WEATHERPROOF APPLIANCES MOUNTED AT FIRE DEPARTMENT CONNECTION (FDC), COORDINATE WITH LOCAL AUTHORITY HAVING JURISDICTION PRIOR TO ROUGH-IN FOR MOUNTING HEIGHT.
- SMOKE AND HEAT DETECTOR HEADS SHALL NOT BE INSTALLED UNTIL AFTER CONSTRUCTION CLEAN-UP IS COMPLETED. IF DETECTOR HEADS ARE INSTALLED PRIOR TO CONSTRUCTION CLEAN-UP, PROTECTIVE COVERS MUST BE IN PLACE TO PROTECT DETECTOR HEADS FROM PARTICULATE DAMAGE. DETECTORS LOCATED ON THE WALL SHALL HAVE THE TOP OF THE DETECTOR AT LEAST 4" AND NOT MORE THAN 12" BELOW THE CEILING. INSTALL SMOKE DETECTORS NO CLOSER THAN 3 FEET FROM AIR HANDLING SUPPLY AIR DIFFUSERS OR RETURN AIR OPENINGS. LOCATE DETECTORS NO CLOSER THAN 12" FROM ANY PART OF A LIGHTING FIXTURE.
- DUCT SMOKE DETECTOR HEADS SHALL NOT BE INSTALLED UNTIL AFTER CONSTRUCTION CLEAN-UP IS COMPLETED. DETECTOR HEADS INSTALLED PRIOR TO CONSTRUCTION CLEAN-UP SHALL BE REPLACED. DUCT DETECTORS ARE TO BE PROVIDED BY THE FIRE ALARM CONTRACTOR AND INSTALLED BY THE MECHANICAL CONTRACTOR.
- ADDRESSABLE MODULES SHALL BE INSTALLED LESS THAN 3- FEET FROM THE DEVICE BEING CONTROLLED OR MONITORED. ORIENT THE DEVICE MOUNTING FOR BEST MAINTENANCE ACCESS. LABEL ALL ADDRESSABLE MODULES AS TO THEIR FUNCTION.
- MOUNT WITHIN 5'-0" OF FURNACE DISCHARGE REGISTER.



**2**  
E2.1  
**STANDARD MOUNTING HEIGHTS/INSTRUCTIONS**  
NO SCALE

**LIGHTING FIXTURE SCHEDULE**

TYPE:	MANUFACTURER NUMBER AND EQUALS:	VOLTAGE:	MOUNTING:	LAMP TYPE:	LAMP QUANTITY:	DESCRIPTION:
EL	COOPER NO. 4VT-LDS-6-DR-UNV-L840-CD1-WL OR EQUAL BY HUBBELL OR PHILIPS	277	RECESSED	LED	1 6000 LUMEN 51 WATTS	WALL-MOUNTED VAPORITTE I.E.D., 4'-0"

- NOTES:
- ARCHITECT RESERVES THE RIGHT TO SELECT ALL COLORS OR MAKE CUSTOM COLOR DURING SHOP DRAWING REVIEW BID ACCORDINGLY.
  - COORDINATE MOUNTING OF ALL LUMINAIRES WITH ARCHITECTURAL ELEVATIONS PRIOR TO INSTALLATION
  - FOR WARRANTY AND LONG TERM SUPPORT FOR OWNER, ALL LIGHTING FIXTURES SHALL BE PURCHASED THROUGH MANUFACTURER REPRESENTATIVES LOCATED IN THE STATE OF ALABAMA. SUBMITTALS RECEIVED THAT DO NOT COMPLY WITH THIS REQUIREMENT WILL BE REJECTED WITHOUT REVIEW. THE ELECTRICAL CONTRACTOR
  - ALL INTERIOR LIGHTS SHALL HAVE 3500K TEMPERATURE LAMPS, UNLESS NOTED OTHERWISE.
  - PROVIDE ALL 0-10V DIMMING BRANCH CIRCUITING REQUIRED.
  - PROVIDE BATTERY BACKUP AS SHOWN ON DRAWINGS. LIGHTING CONNECTED TO GENERATOR IS REQUIRED TO HAVE EMERGENCY BATTERY UNITS FOR THIS APPLICATIONS. SEE LEGEND.

**GENERAL NOTES:**

- Survivability requirements and regulations may vary depending on the local jurisdiction. Please contact your Authority Having Jurisdiction (AHJ) for further details.
- Since fire-rated system requirements can vary from jurisdiction to jurisdiction, please approach a third-party firestop company for an "engineering judgment" or "firestop EJ".
- Installation of components of the AOR-5/AOR-10 system into a fire-rated area or room may be required depending on the requirements of the jurisdiction.
- COORDINATE LOCATION OF POWER SUPPLY AND COMMAND UNIT WITH EXISTING ELEVATOR CALL STATION EQUIPMENT AND OWNER PRIOR TO ROUGH-IN.

**KEYED NOTES**

- TALK A PHONE MODEL COMMAND UNIT AOR-5 (UP TO 5 CALL STATIONS) OR AOR-10 (UP TO 10 CALL STATIONS).
- CALL STATION WIRING FOR EACH CALL STATION.

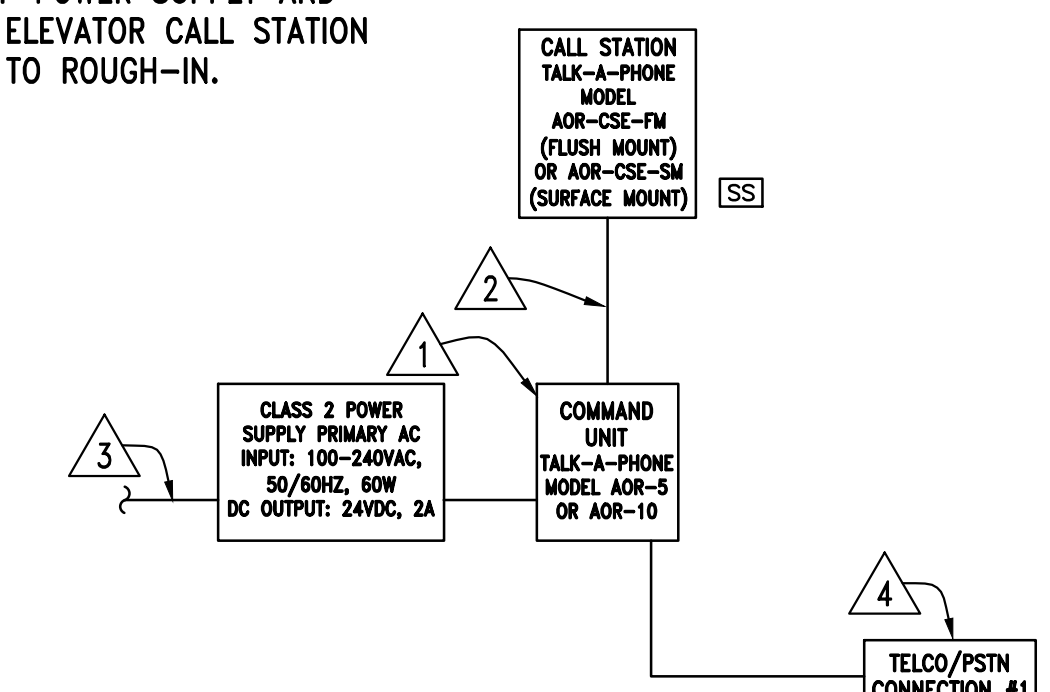
Wiring Specifications for Each Call Station:  
 (A) Maximum cable length will vary with wire gauge.

- With 18 AWG wire, the supported distance range between Command Unit and Call Station is 2,501-3,500 ft.
- With 20 AWG wire, the supported distance range between Command Unit and Call Station is 1,501-2,500 ft.
- With 22 AWG wire, the supported distance range between Command Unit and Call Station is 1,001-1,500 ft.
- With 24 AWG wire, the supported distance range between Command Unit and Call Station is 0-1,000 ft.

(B) Twisted, shielded pairs are recommended with the shield connected to earth ground at the Command Unit end.

(C) POWER FROM LOCAL 120V CIRCUIT (2#12 & 1#12 GRD - 3/4")

(D) PROVIDE A RATH 2100-LTEGSM4-2 (AT&T) OR A RATH 2100-LTEVERA-2 (VERIZON) CELLULAR GATEWAY FOR THE COMMUNICATIONS PATH FOR EACH OF THE AREA OF RESCUE ASSISTANCE SYSTEM(S). IN ADDITION TO THE CELLULAR GATEWAYS PROVIDE ONE YEAR OF CELLULAR SERVICE FOR THE CELLULAR GATEWAY. LASTLY PROVIDE ONE YEAR OF CENTRAL STATION MONITORING AND ANSWERING SERVICE FOR RESPONSE TO CALLS FROM THE AOR.

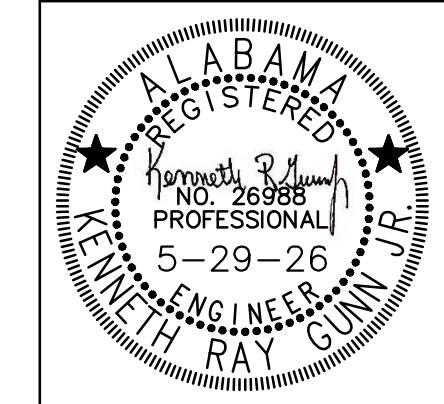


**3**  
E2.1  
**2-WAY COMMUNICATIONS SYSTEM RISER**  
NO SCALE



PROJECT NAME  
**ELEVATOR FOR THOMPSON HIGH SCHOOL**  
 1912 WARRIERS PKWY, ALABAMA AL 35007  
 ALABAMA BOARD OF EDUCATION

SHEET TITLE: ELECTRICAL LEGEND, LUMINAIRE SCHEDULE, AND FIRE ALARM RISER DIAGRAM



PROJ. MGR.: K.R.G.  
 DRAWN: I.D.L.  
 DATE: 05.29.2026  
 REVISIONS

JOB NO. 25-305A

SHEET NO:

**E2.1**

**Gunn & Associates, P.C.**  
 Consulting Engineers  
 3102 Highway 14  
 Millbrook, AL 36054  
 Tel: 334.285.1273

1200 Providence Park, Suite 200  
 Birmingham, AL 35242  
 GA#26-109